

Phone: (505) 476-3441
General Information
Phone: (505) 629-6116

State of New Mexico
Energy, Minerals and Natural Resources

Form C-103 **Page 1 of 7**
Revised July 18, 2013

Online Phone Directory Visit:
<https://www.emnrd.nm.gov/ocd/contact-us/>

OIL CONSERVATION DIVISION
1220 South St. Francis Dr.
Santa Fe, NM 87505

| | | |
|---|--|--|
| SUNDRY NOTICES AND REPORTS ON WELLS (DO NOT USE THIS FORM FOR PROPOSALS TO DRILL OR TO DEEPEN OR PLUG BACK TO A DIFFERENT RESERVOIR. USE "APPLICATION FOR PERMIT" (FORM C-101) FOR SUCH PROPOSALS.) 1. Type of Well: Oil Well <input checked="" type="checkbox"/> Gas Well <input type="checkbox"/> Other <input type="checkbox"/> | | WELL API NO. 30-15-30189 |
| 2. Name of Operator HILCORP ENERGY COMPANY | | 5. Indicate Type of Lease STATE <input checked="" type="checkbox"/> FEE <input type="checkbox"/> |
| 3. Address of Operator 1111 Travis Street Houston, TX 77002 | | 6. State Oil & Gas Lease No. 309175 |
| 4. Well Location Unit Letter <u>E</u> : 1650 feet from the <u>N</u> line and <u>970</u> feet from the <u>W</u> line Section <u>33</u> Township <u>17S</u> Range <u>28E</u> NMPM County <u>Eddy</u> | | 7. Lease Name or Unit Agreement Name Washington 33 State |
| 11. Elevation (Show whether DR, RKB, RT, GR, etc.) 3663 GL | | 8. Well Number 007 9. OGRID Number 372171 10. Pool name or Wildcat Artesia Q-Gryb-SA |

12. Check Appropriate Box to Indicate Nature of Notice, Report or Other Data

NOTICE OF INTENTION TO:

PERFORM REMEDIAL WORK ☐ PLUG AND ABANDON ☐
 TEMPORARILY ABANDON ☐ CHANGE PLANS ☐
 PULL OR ALTER CASING ☐ MULTIPLE COMPL ☐
 DOWNHOLE COMMINGLE ☐
 CLOSED-LOOP SYSTEM ☐
 OTHER: ☐

SUBSEQUENT REPORT OF:

REMEDIAL WORK ☐ ALTERING CASING ☐
 COMMENCE DRILLING OPNS. ☐ **P AND A** ☒
 CASING/CEMENT JOB ☐

OTHER: ☐

13. Describe proposed or completed operations. (Clearly state all pertinent details, and give pertinent dates, including estimated date of starting any proposed work). SEE RULE 19.15.7.14 NMAC. For Multiple Completions: Attach wellbore diagram of proposed completion or recompletion. Notify NM Regulatory 24 hours prior

- 6/19-MIRU NU BOP RUN CBL TAG AT 2790', POOH SISD
- 6/20-RIH 4 3/4 BIT CLEAN OUT TO 3430' PULL BIT TIH OPEN END 3430', CLEAR TBG SPOT 20SX PUH SISD
- 6/23- TAG 3200' RIH CICR SET AT 2233' SPOT 15 SX POOH WOC AND TAG 2030', RIH CICR TO 1609', WOULD NOT SET, POOH, RIH 5 1/2 CICR SET AT 1600' SPOT 15 SX POOH SISD.
- 6/24 TAG 1287', DRILLOUT TO 1609' POOH SISD
- 6/25 TIH 1609' SPOT 15 SX WOC AND TAG 1448'
- 6/26 RUN AND SET CIBP 1344, PRESS TEST 500 PSI 30 MIN, SPOT 25SX 1344 CIRC, P&A MUD PERF 545 PRESS TO 500 PSI RIH TO 611' CIRC CEMENT TO SURF, 60 SX, ND BOP, HOT WORK C.O.W.H. AND MAST ANCHORS, VERIFY CEMENT AT SURF R.D.M.Q., DHM TO BE INSTALLED
- 6/27-Installed DHM

P&A MUD BETWEEN ALL PLUGS, CLOSED LOOP DLUID TO LICENSED FACILITY

Spud Date:

Rig Release Date:

I hereby certify that the information above is true and complete to the best of my knowledge and belief.

SIGNATURE  TITLE Vice President DATE 07/01/2025

Type or print name Brody Pinkerton E-mail address: brody@maverickwellpluggers.com PHONE: 432-458-3780

For State Use Only

APPROVED BY: _____ TITLE _____ DATE _____

Conditions of Approval (if any):

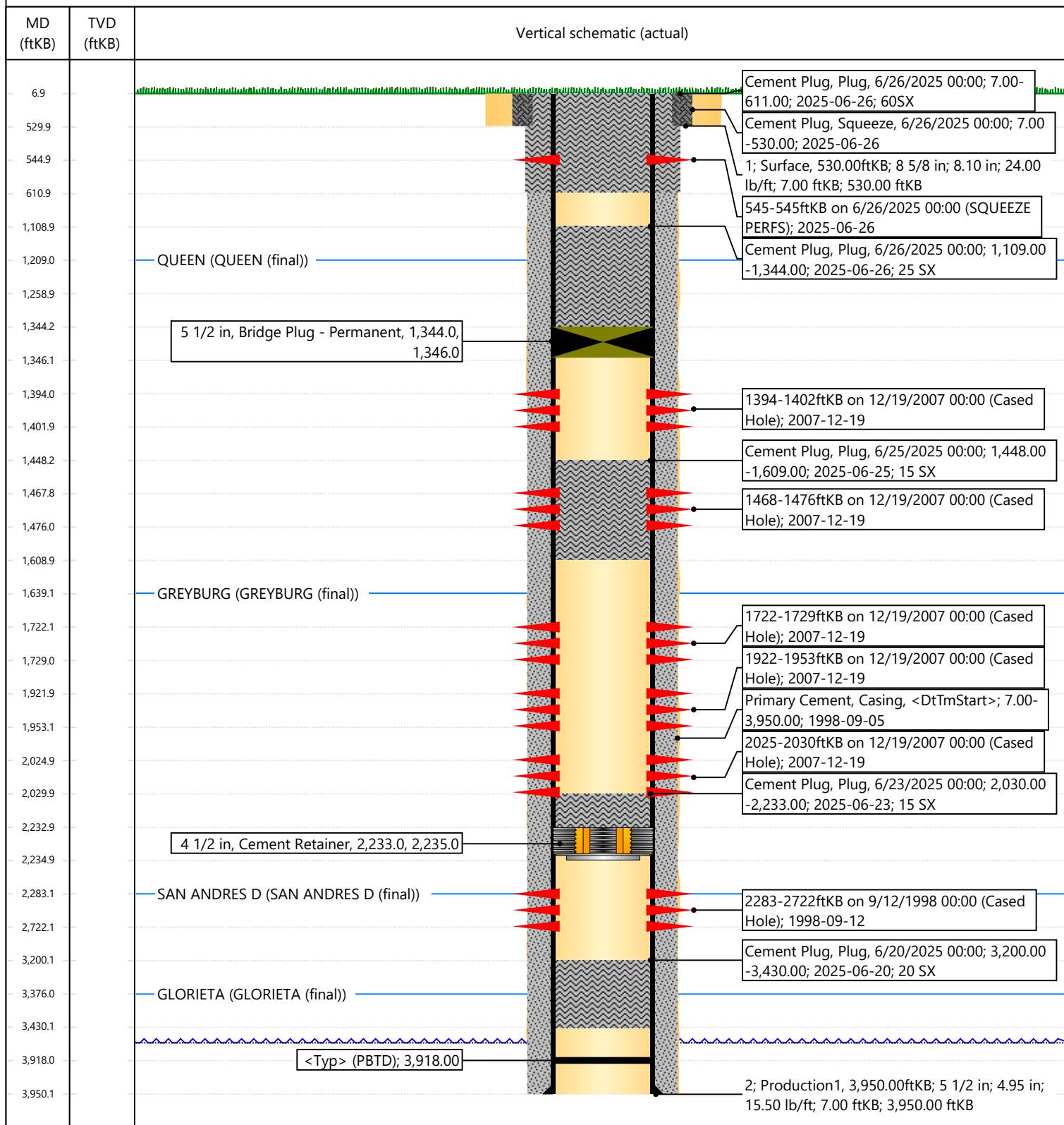


Current Schematic - Version 3

Well Name: WASHINGTON 33 STATE #007

| | | | | | |
|-----------------------------------|--|-------------------------------------|------------------------------------|--------------------------------|---------------------------------------|
| API / UWI 3001530189 | Surface Legal Location SEC 33, T17S, R28E | Field Name Artesia | Route | State/Province NEW MEXICO | Well Configuration Type Vertical |
| Ground Elevation (ft) 3,663.01 | Original KB/RT Elevation (ft) 3,670.01 | Tubing Hanger Elevation (ft) | RKB to GL (ft) 7.00 | KB-Casing Flange Distance (ft) | KB-Tubing Hanger Distance (ft) |
| Tubing Strings | | | | | |
| Run Date 9/13/2010 00:00 | Set Depth (ftKB) 2,900.50 | String Max Nominal OD (in) 2 7/8 | String Min Nominal ID (in) 2.44 | Weight/Length (lb/ft) 6.50 | Original Spud Date 8/27/1998 00:00 |

Original Hole, WASHINGTON 33 STATE #7 [Vertical]





Daily Reports

Well Name: WASHINGTON 33 STATE #007

| | | | | | |
|---|--|---------------------------------------|------------------|---------------------------------------|-------------------------------------|
| API / UWI 3001530189 | Surface Legal Location SEC 33, T17S, R28E | Field Name Artesia | License No. | State/Province NEW MEXICO | Well Configuration Type Vertical |
| Original KB/RT Elevation (ft) 3,670.01 | RKB to GL (ft) 7.00 | Original Spud Date 8/27/1998 00:00 | Rig Release Date | PBTD (All) Original Hole - 3,918.0 | Total Depth All (TVD) |

Expense Plug & Abandon, 4/2/2025 - 6/26/2025

| | | | | | | | | | | |
|---|--|---|--|--|--|--|--|-----------------------|-------------------------|--|
| Job Category Expense Plug & Abandon | | Job Name WASHINGTON 33 STATE #007 - Land-TA - Temporarily Abandon - with Failure | | Primary Job Type ABANDONMENT P&A | | Actual Start Date 4/2/2025 | | End Date 6/26/2025 | | |
| Report Number 1 | | Report Start Date 4/2/2025 | | Report End Date 4/3/2025 | | Ops and Depth @ Morning Report RDMO WOR & equipment | | | AFE Number 255-02300 | |
| Last 24hr Summary Safety Meeting Live wells, Shut in procedure, H2S, Inclement weather MIRU WOR. PU on rod string & LD pumping unit head. Pull pump off seat. LD 61- 3/4" slick rods & 49 - 7/8" slick rods with 20' x 2-1/2" bottom hole down pump. ND wellhead flange & NU BOPs. RU floor & Tbg tongs. POOH with 86 jts 2-7/8" J55 tbg. RD Tbg tongs & floor. Secured well & WOR equipment. | | | | | | | | | | |
| 24hr Forecast RDMO WOR & support equipment | | | | | | | | | | |
| Daily Job Total (Cost) 9,400.00 | | | | | | Cumulative (Cost) 9,400.00 | | | | |
| Start Time | | End Time | | Operation | | | | | | |
| 07:00 | | 07:30 | | Safety Meeting Live wells, Shut in procedure, H2S, Inclement weather | | | | | | |
| 07:30 | | 08:30 | | MIRU WOR. PU on rod string & LD pumping unit head. Pull pump off seat. | | | | | | |
| 08:30 | | 11:00 | | LD 61- 3/4" slick rods & 49 - 7/8" slick rods with 20' x 2-1/2" bottom hole down pump. | | | | | | |
| 11:00 | | 13:00 | | ND wellhead flange & NU BOPs. RU floor & Tbg tongs. | | | | | | |
| 13:00 | | 15:30 | | POOH with 86 jts 2-7/8" J55 tbg. | | | | | | |
| 15:30 | | 17:30 | | RD Tbg tongs & floor | | | | | | |
| 17:30 | | 18:00 | | Secured well & WOR equipment | | | | | | |
| Report Number 2 | | Report Start Date 6/18/2025 | | Report End Date 6/19/2025 | | Ops and Depth @ Morning Report | | | AFE Number 255-02300 | |
| Last 24hr Summary Safety Meeting Defensive driving, Driver awareness, Road rage Loaded all equipment & moved to location later half of the day. | | | | | | | | | | |
| 24hr Forecast P&A procedure | | | | | | | | | | |
| Daily Job Total (Cost) 5,320.00 | | | | | | Cumulative (Cost) 14,720.00 | | | | |
| Start Time | | End Time | | Operation | | | | | | |
| 12:00 | | 17:00 | | Safety Meeting Defensive driving, Driver awareness, Road rage Loaded all equipment & moved to location later half of the day. | | | | | | |
| Report Number 3 | | Report Start Date 6/19/2025 | | Report End Date 6/20/2025 | | Ops and Depth @ Morning Report MIRU WOR & equipment | | | AFE Number 255-02300 | |
| Last 24hr Summary Safety Meeting Team Work, Hydration, Heat exhaustion Wait for mechanic to come work on Draw works drive shaft. MIRU WOR & equipment. ND welhead & NU BOP. RU pump lines MIRU Fesco WLU. RIH to 2790' WLM. Unable to get down. Attempted to CBL the well. Unable to keep the well full of fluid. Pumping at 3 BPM @ 0 psi. Contacted OCD David Alvarado. Instructed us to make preparation to cleanout to PBTD. POOH with tools. RDMO Fesco. RU floor & Tbg tongs. Secured well & equipment | | | | | | | | | | |
| 24hr Forecast RIH with Rock Bit to cleanout to PBTD | | | | | | | | | | |
| Daily Job Total (Cost) 12,635.00 | | | | | | Cumulative (Cost) 27,355.00 | | | | |
| Start Time | | End Time | | Operation | | | | | | |
| 07:00 | | 07:30 | | Safety Meeting Team Work, Hydration, Heat exhaustion | | | | | | |
| 07:30 | | 09:00 | | Waited on Mechanic to repair draw works drive shaft | | | | | | |
| 09:00 | | 11:00 | | MIRU WOR & equipment. ND welhead & NU BOP. RU pump lines | | | | | | |
| 11:00 | | 14:00 | | MIRU Fesco WLU. RIH to 2790' WLM. Unable to get down. Attempted to CBL the well. Unable to keep the well full of fluid. Pumping at 3 BPM @ 0 psi. Contacted OCD David Alvarado. Instructed us to make preparation to cleanout to PBTD. POOH with tools. RDMO Fesco. | | | | | | |
| 14:00 | | 14:30 | | RU floor & Tbg tongs. Secured well & equipment | | | | | | |



Daily Reports

Well Name: WASHINGTON 33 STATE #007

| | | | | | |
|---|--|---------------------------------------|------------------|---------------------------------------|-------------------------------------|
| API / UWI 3001530189 | Surface Legal Location SEC 33, T17S, R28E | Field Name Artesia | License No. | State/Province NEW MEXICO | Well Configuration Type Vertical |
| Original KB/RT Elevation (ft) 3,670.01 | RKB to GL (ft) 7.00 | Original Spud Date 8/27/1998 00:00 | Rig Release Date | PBTD (All) Original Hole - 3,918.0 | Total Depth All (TVD) |

| | | | | |
|--------------------|--------------------------------|------------------------------|--|-------------------------|
| Report Number 4 | Report Start Date 6/20/2025 | Report End Date 6/21/2025 | Ops and Depth @ Morning Report MU 4-3/4" Rock Bit. RIH to cleanout wellbore | AFE Number 255-02300 |
|--------------------|--------------------------------|------------------------------|--|-------------------------|

Last 24hr Summary
 Safety Meeting
 Communication, Team Work, Overhead loads
 MU 4-3/4" Rock Bit & RIH to 3430' TM. Pumping 2 bpm @ 0 psi. No circulation.
 Attempted to get down. Unable too. Cement plug has been set according to measurements.
 TCO @ 3430' TM covering the Paddock formation. Contacted the OCD to update Bobby Trujillo. David Alvarado was on days off. Permission was granted to move forward. POOH with RB.
 MU mule shoe & RBIH to 3421' TM.
 Plug #1
 20 sxs Class C cement plug 3430' TM to 3230' TM
 200' plug 14.8 ppg 5.5" Csg 15.5#
 13 bbls displacement
 POOH with 20 stds
 WOC
 Secured well & equipment

| |
|--------------------------------|
| 24hr Forecast P&A procedure |
|--------------------------------|

| | |
|------------------------------------|--------------------------------|
| Daily Job Total (Cost) 9,538.00 | Cumulative (Cost) 36,893.00 |
|------------------------------------|--------------------------------|

| Start Time | End Time | Operation |
|------------|----------|---|
| 07:00 | 07:30 | Safety Meeting Communication, Team Work, Overhead loads |
| 07:30 | 12:30 | MU 4-3/4" Rock Bit & RIH to 3430' TM. Pumping 2 bpm @ 0 psi. No circulation. Attempted to get down. Unable too. Cement plug has been set according to measurements. TCO @ 3430' TM covering the Paddock formation. Contacted the OCD to update Bobby Trujillo. David Alvarado was on days off. Permission was granted to move forward. POOH with RB. MU mule shoe & RBIH to 3421' TM. |
| 12:30 | 15:00 | Plug #1 20 sxs Class C cement plug 3430' TM to 3230' TM 200' plug 14.8 ppg 5.5" Csg 15.5# 13 bbls displacement POOH with 20 stds |
| 15:00 | 15:30 | Secured Well & equipment |

| | | | | |
|--------------------|--------------------------------|------------------------------|---|-------------------------|
| Report Number 5 | Report Start Date 6/23/2025 | Report End Date 6/24/2025 | Ops and Depth @ Morning Report RIH with 2-3/8" J55 Tbg | AFE Number 255-02300 |
|--------------------|--------------------------------|------------------------------|---|-------------------------|

Last 24hr Summary
 Safety Meeting
 Inclement weather, Multiple Operations, Communication
 RIH with J55 Tbg to soft TOC @ 3200' TM. POOH.
 MU CICR & RIH to 2233' TM 70 jts. Set CICR.
 Plug #2
 15 sxs Class C cement plug 2233' TM to 2083' TM
 150' plug 14.8 ppg 5.5" Csg 15.5#
 9 bbls displacement
 POOH.
 WOC - 4 hrs
 RBIH with 2-3/8" J55 Tbg. Soft tag TOC @ 2030' TM.
 Had issues setting CICR & Shut down for Inclement weather.
 LD Tbg.
 Plug #3
 15 sxs Class C cement plug 1589' TM to 1439' TM
 150' plug 14.8 ppg 5.5" Csg 15.5#
 6 bbls displacement
 POOH
 WOC
 Secured Well & Equipment

| |
|--------------------------------|
| 24hr Forecast P&A Procedure |
|--------------------------------|

| | |
|-------------------------------------|--------------------------------|
| Daily Job Total (Cost) 10,744.00 | Cumulative (Cost) 47,637.00 |
|-------------------------------------|--------------------------------|

| Start Time | End Time | Operation |
|------------|----------|---|
| 07:00 | 07:30 | Safety Meeting Inclement weather, Multiple Operations, Communication |



Daily Reports

Well Name: WASHINGTON 33 STATE #007

| | | | | | |
|---|--|---------------------------------------|------------------|---------------------------------------|-------------------------------------|
| API / UWI 3001530189 | Surface Legal Location SEC 33, T17S, R28E | Field Name Artesia | License No. | State/Province NEW MEXICO | Well Configuration Type Vertical |
| Original KB/RT Elevation (ft) 3,670.01 | RKB to GL (ft) 7.00 | Original Spud Date 8/27/1998 00:00 | Rig Release Date | PBTD (All) Original Hole - 3,918.0 | Total Depth All (TVD) |

| Start Time | End Time | Operation |
|------------|----------|---|
| 07:30 | 15:30 | RIH with J55 Tbg to soft TOC @ 3200' TM. POOH. MU CICR & RIH to 2233' TM 70 jts. Set CICR. Plug #2 15 sxs Class C cement plug 2233' TM to 2083' TM 150' plug 14.8 ppg 5.5" Csg 15.5# 9 bbls displacement POOH. WOC - 4 hrs RBIH with 2-3/8" J55 Tbg. Soft tag TOC @ 2030' TM. |
| 15:30 | 17:00 | Inclemenat Weather |
| 17:00 | 19:30 | Had issues setting CICR LD Tbg. Plug #3 15 sxs Class C cement plug 1589' TM to 1439' TM 150' plug 14.8 ppg 5.5" Csg 15.5# 6 bbls displacement POOH WOC |
| 19:30 | 20:00 | Secured Well & Equipment |

| | | | | |
|--------------------|--------------------------------|------------------------------|---|-------------------------|
| Report Number 6 | Report Start Date 6/24/2025 | Report End Date 6/25/2025 | Ops and Depth @ Morning Report RIH with 2-3/8" J55 Tbg | AFE Number 255-02300 |
|--------------------|--------------------------------|------------------------------|---|-------------------------|

| |
|--|
| Last 24hr Summary Safety Meeting Lightening, Flooding, Slips Trips & Falls RIH with 2-3/8" J55 Tbg to soft tag TOC @ 1287' TM 40 Jts Contacted OCD David Alvarado. Instructed to drill up cement & Respot Plug #3 POOH with mule shoe. Ordered 4-3/4" Rock Bit & DCs with power swivel. MU Rock Bit 4-3/4" OD & 4 DCs with bit sub. RIH to 1287' TM. RU power swivel.washed down to 1607' TM to Top of CICR. Never saw any hard cement. Washed down easy with no torque up or stalls. Circulated bottoms up till returns cleared up. RD power swivel. POOH with 10 stds. Secured well & Equipment |
|--|

| |
|--------------------------------|
| 24hr Forecast P&A Procedure |
|--------------------------------|

| | |
|------------------------------------|--------------------------------|
| Daily Job Total (Cost) 9,764.00 | Cumulative (Cost) 57,401.00 |
|------------------------------------|--------------------------------|

| Start Time | End Time | Operation |
|------------|----------|---|
| 07:00 | 07:30 | Safety Meeting Lightening, Flooding, Slips Trips & Falls |
| 07:30 | 18:30 | RIH with 2-3/8" J55 Tbg to soft tag TOC @ 1287' TM 40 Jts Contacted OCD David Alvarado. Instructed to drill up cement & Respot Plug #3 POOH with mule shoe. Ordered 4-3/4" Rock Bit & DCs with power swivel. MU Rock Bit 4-3/4" OD & 4 DCs with bit sub. RIH to 1287' TM. RU power swivel.washed down to 1607' TM to Top of CICR. Never saw any hard cement. Washed down easy with no torque up or stalls. Circulated bottoms up till returns cleared up. RD power swivel. POOH with 10 stds. |
| 18:30 | 19:00 | Secured well & equipment |

| | | | | |
|--------------------|--------------------------------|------------------------------|---|-------------------------|
| Report Number 7 | Report Start Date 6/25/2025 | Report End Date 6/26/2025 | Ops and Depth @ Morning Report RIH to tag top of CICR @ 1607' TM | AFE Number 255-02300 |
|--------------------|--------------------------------|------------------------------|---|-------------------------|

| |
|--|
| Last 24hr Summary Safety Meeting Team work, communication, PPE, Pinch points RIH to soft tag top of CICR @ 1607' TM POOH with Tbg. MU mule shoe RIH with Tbg to 1605' TM Plug #4 15 sxs Class C cement plug 1607' TM to 1448' TM 150' plug 14.8 ppg 5.5" Csg 15.5# 6 bbls displacement WOC RIH with Tbg to oft tag TOC @ 1448' POOH Secured well & equipment. |
|--|

| |
|--------------------------------|
| 24hr Forecast P&A Procedure |
|--------------------------------|

| | |
|------------------------------------|--------------------------------|
| Daily Job Total (Cost) 8,704.00 | Cumulative (Cost) 66,105.00 |
|------------------------------------|--------------------------------|

| Start Time | End Time | Operation |
|------------|----------|---|
| 07:00 | 07:30 | Safety Meeting Team work, communication, PPE, Pinch points |



Daily Reports

Well Name: WASHINGTON 33 STATE #007

| | | | | | |
|---|--|---------------------------------------|------------------|---------------------------------------|-------------------------------------|
| API / UWI 3001530189 | Surface Legal Location SEC 33, T17S, R28E | Field Name Artesia | License No. | State/Province NEW MEXICO | Well Configuration Type Vertical |
| Original KB/RT Elevation (ft) 3,670.01 | RKB to GL (ft) 7.00 | Original Spud Date 8/27/1998 00:00 | Rig Release Date | PBTD (All) Original Hole - 3,918.0 | Total Depth All (TVD) |

| Start Time | End Time | Operation |
|------------|----------|---|
| 07:30 | 09:30 | RIH to soft tag top of CIGR @ 1607' TM POOH with Tbg. MU mule shoe RIH with Tbg to 1605' TM |
| 09:30 | 13:30 | Plug #4 15 sxs Class C cement plug 1607' TM to 1448' TM 150' plug 14.8 ppg 5.5" Csg 15.5# 6 bbls displacement WOC |
| 13:30 | 15:30 | RIH with Tbg to oft tag TOC @ 1448' POOH |
| 15:30 | 16:00 | Secured well & equipment |

| | | | | |
|--------------------|--------------------------------|------------------------------|--|-------------------------|
| Report Number 8 | Report Start Date 6/26/2025 | Report End Date 6/27/2025 | Ops and Depth @ Morning Report MIRU Fesco WLU to set CIBP & run CBL | AFE Number 255-02300 |
|--------------------|--------------------------------|------------------------------|--|-------------------------|

Last 24hr Summary
Safety Meeting
Pressure on pump lines, Explosives, moving WL, Overhead loads
MIRU Fesco WLU. MU CIBP for 5-1/2" CSG. RIH to 1344' WLM. Good indication plug set. POOH to confirm. MU CBL tools. RIH to top of CIBP. Logged coming out @ 50 fpm. Good log. RDMO Fesco WLU. Tested CSg to 500 psi- GOOD test. RIH with mule shoe to 1344'
Plug #5
25 sxs Class C cement plug 1344' TM to 1109' TM
250' plug 14.8 ppg 5.5" Csg 15.5#
5 bbls displacement.
LD Tbg. MIRU MWP WLU to perforate @ 540' WLM. POOH
Attempted to circulate. Pressured up to 550 psi. Unable too. RIH with 600' Tbg.
PU 19 jts EOT @ 607' TM.
Plug #6
60 sxs Class C cement plug 600' TM to Surface
600' plug 14.8 ppg 5.5" Csg 15.5#
LD all Tbg. RD Tbg tongs & floor. ND BOP stack.
Dig out cellar. Cut off wellhead. Loaded Production Csg with cement as needed & Surface Csg.
RDMO WOR & all support equipment.
Prepared to make rig move in the morning.

| |
|---------------------------|
| 24hr Forecast Complete |
|---------------------------|

| | |
|-------------------------------------|---------------------------------|
| Daily Job Total (Cost) 33,897.13 | Cumulative (Cost) 100,002.13 |
|-------------------------------------|---------------------------------|

| Start Time | End Time | Operation |
|------------|----------|--|
| 07:00 | 07:30 | Safety Meeting Pressure on pump lines, Explosives, moving WL, Overhead loads |
| 07:30 | 10:30 | Pressure on pump lines, Explosives, moving WL, Overhead loads MIRU Fesco WLU. MU CIBP for 5-1/2" CSG. RIH to 1344' WLM. Good indication plug set. POOH to confirm. MU CBL tools. RIH to top of CIBP. Logged coming out @ 50 fpm. Good log. RDMO Fesco WLU. |
| 10:30 | 16:00 | Tested CSg to 500 psi- GOOD test. RIH with mule shoe to 1344' Plug #5 25 sxs Class C cement plug 1344' TM to 1109' TM 250' plug 14.8 ppg 5.5" Csg 15.5# 5 bbls displacement. LD Tbg. MIRU MWP WLU to perforate @ 540' WLM. POOH Attempted to circulate. Pressured up to 550 psi. Unable too. RIH with 600' Tbg. PU 19 jts EOT @ 607' TM. Plug #6 60 sxs Class C cement plug 600' TM to Surface 600' plug 14.8 ppg 5.5" Csg 15.5# |
| 17:30 | 18:00 | LD all Tbg. RD Tbg tongs & floor. ND BOP stack. Dig out cellar. Cut off wellhead. Loaded Production Csg with cement as needed & Surface Csg. RDMO WOR & all support equipment. |

Sante Fe Main Office
Phone: (505) 476-3441

General Information
Phone: (505) 629-6116

Online Phone Directory
<https://www.emnrd.nm.gov/ocd/contact-us>

State of New Mexico
Energy, Minerals and Natural Resources
Oil Conservation Division
1220 S. St Francis Dr.
Santa Fe, NM 87505

CONDITIONS

Action 507209

CONDITIONS

| | |
|--|--|
| Operator: HILCORP ENERGY COMPANY 1111 Travis Street Houston, TX 77002 | OGRID: 372171 |
| | Action Number: 507209 |
| | Action Type: [C-103] Sub. Plugging (C-103P) |

CONDITIONS

| Created By | Condition | Condition Date |
|------------|---|----------------|
| gcordero | Clean Location in accordance with 19.15.25.10 NMAC. | 9/19/2025 |
| gcordero | Submit C-103Q within one year of plugging. | 9/19/2025 |