

Santa Fe Main Office  
Phone: (505) 476-3441  
General Information  
Phone: (505) 629-6116

Online Phone Directory Visit:  
<https://www.emnrd.nm.gov/ocd/contact-us/>

State of New Mexico  
Energy, Minerals and Natural Resources

OIL CONSERVATION DIVISION  
1220 South St. Francis Dr.  
Santa Fe, NM 87505

Form C-103 *Page 1 of 6*  
Revised July 18, 2013

<p><b>SUNDRY NOTICES AND REPORTS ON WELLS</b> (DO NOT USE THIS FORM FOR PROPOSALS TO DRILL OR TO DEEPEN OR PLUG BACK TO A DIFFERENT RESERVOIR. USE "APPLICATION FOR PERMIT" (FORM C-101) FOR SUCH PROPOSALS.)</p>		<p>WELL API NO. <b>30-025-25791</b></p>
<p>1. Type of Well: Oil Well <input type="checkbox"/> Gas Well <input checked="" type="checkbox"/> Other</p>		<p>5. Indicate Type of Lease STATE <input checked="" type="checkbox"/> FEE <input type="checkbox"/></p>
<p>2. Name of Operator <b>FE-NM, LLC</b></p>		<p>6. State Oil &amp; Gas Lease No. <b>332331</b></p>
<p>3. Address of Operator <b>PO BOX 7995, TYLER, TX 75711</b></p>		<p>7. Lease Name or Unit Agreement Name <b>SHOE BAR RANCH UNIT 3</b></p>
<p>4. Well Location Unit Letter <b>C</b> : <b>660</b> feet from the <b>NORTH</b> line and <b>1980</b> feet from the <b>WEST</b> line Section <b>03</b> Township <b>17S</b> Range <b>35E</b> NMPM County <b>LEA</b></p>		<p>8. Well Number <b>1</b></p>
		<p>9. OGRID Number <b>331102</b></p>
		<p>10. Pool name or Wildcat <b>SHOE BAR; ATOKA (GAS)</b></p>
		<p>11. Elevation (Show whether DR, RKB, RT, GR, etc.) <b>3968.4 GR</b></p>

12. Check Appropriate Box to Indicate Nature of Notice, Report or Other Data

<p><b>NOTICE OF INTENTION TO:</b></p> <p>PERFORM REMEDIAL WORK <input type="checkbox"/> PLUG AND ABANDON <input type="checkbox"/>          TEMPORARILY ABANDON <input type="checkbox"/> CHANGE PLANS <input type="checkbox"/>          PULL OR ALTER CASING <input type="checkbox"/> MULTIPLE COMPL <input type="checkbox"/>          DOWNHOLE COMMINGLE <input type="checkbox"/>          CLOSED-LOOP SYSTEM <input type="checkbox"/>          OTHER: <input type="checkbox"/></p>		<p><b>SUBSEQUENT REPORT OF:</b></p> <p>REMEDIAL WORK <input type="checkbox"/> ALTERING CASING <input type="checkbox"/>          COMMENCE DRILLING OPNS. <input type="checkbox"/> P AND A <input checked="" type="checkbox"/>          CASING/CEMENT JOB <input type="checkbox"/>          OTHER: <input type="checkbox"/></p>	
---	--	---	--

13. Describe proposed or completed operations. (Clearly state all pertinent details, and give pertinent dates, including estimated date of starting any proposed work). SEE RULE 19.15.7.14 NMAC. For Multiple Completions: Attach wellbore diagram of proposed completion or recompletion.

**Plugging Operations completed 7/29/25.**

**See attached Plugging Report.**

Spud Date:

Rig Release Date:

I hereby certify that the information above is true and complete to the best of my knowledge and belief.

SIGNATURE Karen Charles TITLE Sr. Regulatory Analyst DATE 08/14/2025

Type or print name Karen Charles E-mail address: kcharles@faulenergy.com PHONE: 903-581-4382

**For State Use Only**

APPROVED BY: \_\_\_\_\_ TITLE \_\_\_\_\_ DATE \_\_\_\_\_

Conditions of Approval (if any):

WELL: SHOE BAR RANCH UT 3 WELL #1

## DAILY OPERATIONS

FIELD: SHOE BAR  
COUNTY/STATE: LEA/NM  
PTD:  
LOCATION:  
ELEVATION (RKB):  
API #: 3002525791  
SERIAL NO:  
SPUD DATE: 02/21/1978  
OBJECTIVE: Plug and Abandon well  
JOB NAME: 2025\_07 P&A  
CONTRACTOR/RIG#: Orr Energy Services/

Jul 17 2025 RIG SUPERVISOR: J Patterson FW: 0.0  
PRESENT OPERATIONS: MIRU WSU and equipment.  
MIRU EQUIPMENT ON LOCATION. NOTIFY NMOCD OF MIRU AND PLUGGING OPERATIONS TO BEGIN TUES 07/22.  
SD FOR CREW DAYS OFF. WILL RESUME OPERATIONS AND RAISE ON TUESDAY TO BEGIN P&A OPS.  
ACTIVITY PLANNED: Crew days off until 07/22

Jul 22 2025 RIG SUPERVISOR: J Patterson FW: 0.0  
PRESENT OPERATIONS: Raise WSU and spot equipment. Notify NMOCD. Free packer and begin pull tbq.  
CREW ARRIVED ON LOC HELD TAILGATE SAFETY MEETING AND JSA ON H2S, CHECKING PRESSURES, RIGGING UP  
AND NU BOP. AT 9:30 AM OPEN WELL TBG / CSG PRESS AT 100# PSI. BROKE OFF BOLTS ON WH. SPOTTED RIG  
MAT AND RIG. AT 12:45 PM RU AND BLED OFF WELL TO OPEN TOP TANK. FINISHED BREAKING BOLTS OFF WH.  
SPOKE WITH BOBBY TRUJILLO WITH NMOCD AND WENT OVER CONDITIONS OF APPROVAL. AT 3:00 PM ND WH  
AND NU BOP. RU WORK FLOOR AND WORKED TBG UP TO 100,000#. TBG BEGAN TO PULL FREE AT 85,000# AND  
PKR APPEARED TO BE FREE. AT 5:00 PM BEGAN TO POOH WITH 2-7/8 CS HYDRILL TBG. AT 8:00 PM POOH WITH  
200 JTS. CWI. SDFN.  
ACTIVITY PLANNED: Pull tbq. Proceed with plugging ops.

Jul 23 2025 RIG SUPERVISOR: J Patterson FW: 0.0  
PRESENT OPERATIONS: Run CBL. Get NMOCD approval to proceed.  
CREW ARRIVED ON LOC HELD TAILGATE SAFETY MEETING AND JSA ON H2S. AT 7:00 AM OPEN WELL NO PRESS.  
CONT TO POOH WITH TBG. AT 10:00 AM POOH WITH 400 TOTAL JTS 2-7/8 CS HYDRILL. AT 10:30 AM RU JSI WL.  
RIH WITH 3.625 GR RUN TO 12,400 AND POOH. AT 12:00 PM RIH AND SET 4-1/2 CIBP TO 12,400. POOH WITH  
SETTING TOOLS. LOADED HOLE AND PRESS TESTED CSG TO 500# PSI TESTED GOOD. AT 3:45 PM RIH WITH CBL  
TOOLS TO 12,400 AND POOH LOGGING CBL. AT 6:00 PM LD CBL TOOLS. RIH WITH 4 PERF SUB MULE SHOE AND  
TBG. AT 7:00 PM SPOKE WITH BOBBY TRUJILLO AT NMOCD HE LOOKED OVER CBL AND ADVISED US TO CONT TO  
FOLLOW PROCEDURE AS IS. AT 8:30 PM RIH WITH 200 JTS. CWI. SDFN.  
ACTIVITY PLANNED: Proceed with plugging procedure as planned.

WELL: SHOE BAR RANCH UT 3 WELL #1

Jul 24 2025	RIG SUPERVISOR: J Patterson	FW: 0.0
	PRESENT OPERATIONS: Spot cmt plugs as per plan.	
	CREW ARRIVED ON LOC HELD TAILGATE SAFETY MEETING AND JSA ON H2S, RIH WITH TBG, AND PINCH POINTS. AT 7:00 AM OPEN WELL NO PRESS. CONTD TO RIH WITH TBG. AT 10:00 AM TAGGED TOP OF CIBP AT 12,400 AND CIRC HOLE WITH SALT GEL. PUMPED 200 BBLS 10# PPG BRINE WATER WITH SALT GEL. AT 2:00 PM SPOTTED A 60 SX CMT PLUG AT 12,400 ON TOP OF CIBP. STOOD BACK 3,000 TBG IN DERRICK. AT 3:00 PM GAVE NOTICE OF DAILY OPERATIONS TO BOBBY WITH NMOCD. AT 5:00 PM CWI AND SDFN.	
	ACTIVITY PLANNED: Continue plugging ops.	
Jul 25 2025	RIG SUPERVISOR: J Patterson	FW: 0.0
	PRESENT OPERATIONS:	
	CREW ARRIVED ON LOC HELD TAILGATE SAFETY MEETING AND JSA ON H2S, CLEANING WORK AREA AND COMMUNICATION. AT 7:00 AM OPEN WELL NO PRESS. RIH AND TAGGED TOC AT 11,719. POOH WITH TBG TO 11,514. AT 8:40 AM SPOKE WITH BOBBY AT NMOCD GAVE NOTICE OF TAG AT 11,719; HE OKD TO CONT WITH PROCEDURE. SCHEDULED PLUGS FOR THE DAY. AT 9:00 AM SPOTTED A 25 SX CMT PLUG AT 11,514. AT 11:00 AM LD TBG TO 9,945 AND SPOTTED A 25 SX CMT PLUG. AT 11:45 PM LD TBG TO 8,400. AT 12:30 PM RU JSI WL, RIH AND PERF AT 8,645. POOH AND RD WL. LOADED HOLE AND ATTEMPTED TO PUMP INTO PERFS TO NO AVAIL. AT 2:00 PM SPOKE WITH BOBBY AT NMOCD OKD TO PSOT 35 SX CMT AT 8,695, WOC AND TAG. AT 5:00 PM SPOTTED A 35 SX CMT PLUG AT 6,495. POOH WITH TBG TO 2,000 AND WOC. WILL TAG TOMORROW AM. AT 6:30 PM CWI. SDFN.	
Jul 26 2025	RIG SUPERVISOR: J Patterson	FW: 0.0
	PRESENT OPERATIONS:	
	CREW ARRIVED ON LOC HELD TAILGATE SAFETY MEETING AND JSA ON H2S, LD TBG AND KEEPING A CLEAN WORK AREA. AT 7:00 AM OPEN WELL NO PRESS. RIH AND TAGGED TOC AT 8,407. LD TBG TO 7,470. RU WL, RIH AND PERF AT 7,870. LOADED HOLE AND PUMPED 25 BBLS INTO PERFS CIRC OUT 9-5/8 INTERMEDIATE CSG. SET PKR AT 7,470. AT 10:00 AM SQZ 65 SX CMT AT 7,970. CWI WITH 500# PSI AND WOC. AT 2:30 PM RIH WITH TBG AND TAGGED TOC AT 7,653. LD TBG TO 6,176 AND SET PKR. AT 3:30 PM RU RWS WL, RIH AND PERF AT 6,536. LOADED HOLE AND PUMPED 10 BBLS BROKE CIRC OUT 9-5/8 INTERMEIDATE CSG. AT 4:30 PM SQZ 60 CMT AT 6,536. CWI WITH 500# PSI AND WOC. HELPED WL OPERATOR REHEAD WL AND HAD MECHANIC WORK ON CMT TRUCK. AT 7:30 PM CWI. SDFN.	
Jul 27 2025	RIG SUPERVISOR: J Patterson	FW: 0.0
	PRESENT OPERATIONS:	
	CREW ARRIVED ON LOC HELD TAILGATE SAFETY MEETING AND JSA ON H2S. AT 7:00 AM OPEN WELL NO PRESS. RIH WITH TBG AND TAGGED TOC AT 6,348. LD TBG TO 4,720 AND SET PKR. AT 8:30 AM RU RWS WL, RIH AND PERF AT 5,070. AT 9:30 AM SQZ 70 SX CMT AT 5,070. CWI WITH 500# PSI AND WOC. AT 1:30 PM RIH AND TAGGED TOC AT 4,905. LD TBG TO 2,930. RU WL, RIH AND PERF AT 3,322. SET PKR AT 2,930. AT 5:30 PM SQZ 80 SX CMT AT 3,322. AT 7:30 PM CWI. SDFN.	



WELL: SHOE BAR RANCH UT 3 WELL #1

Jul 28 2025	RIG SUPERVISOR:	J Patterson	FW:	0.0
	PRESENT OPERATIONS:	Cmt plug ops as planned.		
	CREW ARRIVED ON LOC HELD TAILGATE SAFETY MEETING AND JSA ON H2S. AT 7:00AM OPEN WELL AND CHECKED PRESS O# ON TBG AND CSG. UNSET PKR AND TIH WITH TBG AND TAGGED PLUG AT 3,123. CALLED IN AND SPOKE WITH BOBBY AT NMOC D AND NOTIFIED HIM OF TAG DEPTH AND SCHEDULED REMAINING PLUGS FOR THE DAY. TOOH WITH TBG TO 2,690 AND SET PKR. RU WLU AND MAKE UP PERF GUN. RIH AND SHOOT SQZ HOLES AT 3,010. POOH WITH E-LINE AND ESTABLISH INJECTION RATE OUT PERFS. BREAK CIRC AT SURF AND SQZ A 55 SX CMT PLUG. CWI WITH 500# AND WOC 4 HRS. RBIH WITH TBG AND TAGGED TOC AT 2,867. POOH WITH TBG TO 1,740 AND RU WLU. MAKE UP PERF GUN AND RIH TO SHOOT SQZ HOLES AT 2,050. LOAD HOLE AND BREAK CIRC OUT 9-5/8 INTERMEDIATE CSG. MIX AND SQZ A 50 SX CMT PLUG AT 2,050 AND CWI WITH 500#. WOC OVERNIGHT AND WILL TAG IN AM. SECURE EQUIP AND SDFD.			
	ACTIVITY PLANNED:	Continue cmt plug ops.		
Jul 29 2025	RIG SUPERVISOR:	J Patterson	FW:	0.0
	PRESENT OPERATIONS:	Finish plugging ops.		
	CREW ARRIVED ON LOC HELD TAILGATE SAFETY MEETING AND JSA ON H2S. ND BOP, RD AND CUTTING OFF WH. AT 7:00 AM RIH WITH TBG AND TAGGED TOC AT 1,901. POOH AND LD TBG. AT 8:20 PM SPOKE WITH BOBBY AT NMOC D GAVE UPDATE ON TAG AND SCHEDULED PLUGS FOR THE DAY. AT 9:00 AM PERF AT 466. LOADED HOLE AND BROKE CIRC OUT 9-5/8 INTERMEDIATE CSG COULD NOT GET CIRC OUT 13-3/8 SURF CSG; PRESS UP TO 500# PSI BLED OFF PRESS. RD WORK FLOOR, ND BOP AND NU FLANGE. PUMPED 155 SX CMT FROM 466 TO SURF IN 5-1/2 AND 9-5/8 CSG. CWI AND WOC. AT 11:00 AM RD AND PREP TO MO. AT 3:00 PM CUT OFF WH, WELDED PLATE AND DRY HOLE MARKER, CLEAN LOC. WELL PLUGGING COMPLETE. (NEXT SURFACE RECLAMATION)			
	ACTIVITY PLANNED:	RDMO WSU. Reclamate surface.		

2001 - 2025 WellEz Information Management, LLC. All rights reserved

# Shoe Bar Ranch Unit 3 - 1


**FAULCONER ENERGY, LLC.**

Shoe Bar Ranch Unit  
Lea County, NM  
API: 30 025 25791  
VEFI Unit: 8991

Updated: 08/25 J.Patterson

RKB: 21'  
GL: 3968'  
KB: 3989'  
Spud: 02/78  
NOTE: All depths are RKB

**Surface Casing:**

13-3/8" 48# H-40 ST&C csg set at 416' in  
17-1/2" hole.  
Cmt with 450sx circ to Surface

**Intermediate Casing:**

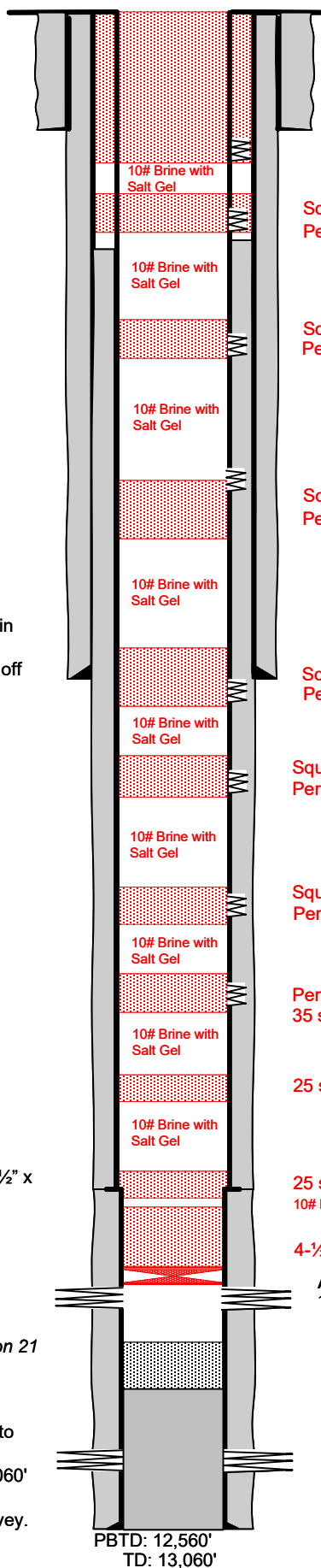
9-5/8" 40# N-80 LT&C csg set at 5008" in  
12-1/4" hole.  
Csg cmt'd with 2500sx + 350 sx topped off  
with 1" tbg circ to Surface.

PBR at 11,053'-11070' with 5-1/2" x  
4-1/2" XO and seal assembly

Fill tagged at 12,498 CD KBM with SLU bailer on 21  
OCT 2020

**Production Casing:**

5-1/2" 17# K-55, & N-80 LT&C csg from surface to  
11,053'.  
4-1/2" 13.5# N-80 LT&C csg from 11,070' to 13,060'  
in 8-3/4" hole.  
Cmt'd with 900sx to TOC at 900' by Temp. Survey.

**P&A'd Well**


Circulate 155 sx cmt to Surface.  
Perforate at 466' (could not circulate out surf. csg.)

Squeezed at 1,740' with 50 sx cmt. (tagged top at 1,901')  
Perforate at 2,050"

Squeezed at 2,690' with 55 sx cmt. (tagged top at 2,867')  
Perforate at 3,010'

Squeezed at 2,930' with 80 sx cmt. (tagged top at 3,123')  
Perforate at 3,322'

Squeezed at 4,720' with 70 sx cmt. (tagged top at 4,905')  
Perforate at 5,070'

Squeezed at 6,536' with 60 sx cmt. (tagged top at 6,348')  
Perforate at 6,536' (pumped 10 bbls into perfs and out 9-5/8" csg.)

Squeezed at 7,470' with 65 sx cmt. (tagged top at 7,653')  
Perforate at 7,870' (pumped 25 bbls into perfs and out 9-5/8" csg.)

Perforate at 8,645' (could not pump into perfs)  
35 sx cmt at 8,695' (tagged top at 8,407')

25 sx cmt at 9,945'

25 sx cmt at 11,514'  
10# Brine with Salt Gel

4-1/2" CIBP set at 12,400' + 60 sx cmt (tagged top at 11,719')

**Atoka:**  
12458, 60', 62', 66', 70', 72', 74'.  
Re-perfd 12454'-12474'.

**Morrow:**  
12,839'-12,849'

PBTD: 12,560'  
TD: 13,060'

Sante Fe Main Office  
Phone: (505) 476-3441

General Information  
Phone: (505) 629-6116

Online Phone Directory  
<https://www.emnrd.nm.gov/oed/contact-us>

State of New Mexico  
Energy, Minerals and Natural Resources  
Oil Conservation Division  
1220 S. St Francis Dr.  
Santa Fe, NM 87505

CONDITIONS

Action 507282

CONDITIONS

Operator: FE-NM, LLC 1001 E SE Loop 323, STE. 160 Tyler, TX 75711	OGRID: 331102
	Action Number: 507282
	Action Type: [C-103] Sub. Plugging (C-103P)

CONDITIONS

Created By	Condition	Condition Date
gcordero	Clean Location in accordance with 19.15.25.10 NMAC.	9/19/2025
gcordero	Submit C-103Q within one year of plugging.	9/19/2025