

Submit Copy To Appropriate District

Office

District I – (575) 393-6161
 1625 N. French Dr., Hobbs, NM 88240
 District II – (575) 748-1283
 811 S. First St., Artesia, NM 88210
 District III – (505) 334-6178
 1000 Rio Brazos Rd., Aztec, NM 87410
 District IV – (505) 476-3460
 1220 S. St. Francis Dr., Santa Fe, NM
 87505

State of New Mexico
 Energy, Minerals and Natural Resources

Form C-103
 Revised July 18, 2013

OIL CONSERVATION DIVISION
 1220 South St. Francis Dr.
 Santa Fe, NM 87505

WELL API NO. 30-025-36823	
5. Indicate Type of Lease STATE <input checked="" type="checkbox"/> FEE <input type="checkbox"/>	
6. State Oil & Gas Lease No. E 7990	
7. Lease Name or Unit Agreement Name OPL Twin Berry State	
8. Well Number	1
9. OGRID Number 256073	
10. Pool name or Wildcat Wildcat Morrow	

SUNDRY NOTICES AND REPORTS ON WELLS (DO NOT USE THIS FORM FOR PROPOSALS TO DRILL OR TO DEEPEN OR PLUG BACK TO A DIFFERENT RESERVOIR. USE "APPLICATION FOR PERMIT" (FORM C-101) FOR SUCH PROPOSALS.)	
1. Type of Well: Oil Well <input type="checkbox"/> Gas Well <input checked="" type="checkbox"/> Other	
2. Name of Operator J R Oil Ltd. Co.	
3. Address of Operator PO Box 2975 Hobbs, NM 88241	
4. Well Location Unit Letter <u>A</u> , <u>820</u> feet from the <u>North</u> line and <u>680</u> feet from the <u>East</u> line Section <u>8</u> Township <u>18S</u> Range <u>34E</u> NMPM County <u>Lea</u>	
11. Elevation (Show whether DR, RKB, RT, GR, etc.)	

12. Check Appropriate Box to Indicate Nature of Notice, Report or Other Data

NOTICE OF INTENTION TO:		SUBSEQUENT REPORT OF:	
PERFORM REMEDIAL WORK <input type="checkbox"/>	PLUG AND ABANDON <input type="checkbox"/>	REMEDIAL WORK <input type="checkbox"/>	ALTERING CASING <input type="checkbox"/>
TEMPORARILY ABANDON <input type="checkbox"/>	CHANGE PLANS <input type="checkbox"/>	COMMENCE DRILLING OPNS. <input type="checkbox"/>	P AND A <input checked="" type="checkbox"/>
PULL OR ALTER CASING <input type="checkbox"/>	MULTIPLE COMPL <input type="checkbox"/>	CASING/CEMENT JOB <input type="checkbox"/>	
DOWNHOLE COMMINGLE <input type="checkbox"/>			
CLOSED-LOOP SYSTEM <input type="checkbox"/>			
OTHER: <input type="checkbox"/>		OTHER: <input type="checkbox"/>	

13. Describe proposed or completed operations. (Clearly state all pertinent details, and give pertinent dates, including estimated date of starting any proposed work). SEE RULE 19.15.7.14 NMAC. For Multiple Completions: Attach wellbore diagram of proposed completion or recompletion.

See Attached

Spud Date:

09/17/2004

Rig Release Date:

I hereby certify that the information above is true and complete to the best of my knowledge and belief.

SIGNATURE Maren Latimer TITLE Agent DATE 9/24/2025Type or print name Maren Latimer E-mail address: mlatimer@ravenop.com PHONE: 575-691-6790**For State Use Only**

APPROVED BY: _____ TITLE _____ DATE _____

Conditions of Approval (if any):

Plugging Report
JR Oil LTD. Co.
OPL Twin Berry State #1
API 30-025-36823

7/21/2025 Moved in rig. Set matting board and rigged up. Had to remove wellhead bolts with a torch. Installed BOP. Worked tubing to release on/off tool. No bump in the tool. Loaded tubing with 40 bbls brine. Continued to work tubing until a bump could be felt. Released on/off tool. Let equalize for 45 minutes. Latched back on with the on/off tool. Attempted to release the packer. Could not work free. Released the on/off tool. Will let equalize overnight. SION.

7/22/2025 Stung back in to OOT. Worked tubing attempting to release the packer. Packer would not come free. Released OOT and POOH with tubing. 409 joints 2 3/8" tubing above top half of OOT. This was less tubing that was listed on the data sheet. Made gauge ring run and tagged up at 13370'. Reported to JR Oil. SION

7/23/2025 RIH with Model R packer and set at 12990'. Loaded tubing with 9.8 bbls. Pressured up to 1500# at .25 bbl/min. Stopped pumping. Bled down 450# to 1050# in 1 minute. Bled down another 300# to 750# in the next 2 minutes. After 12 minutes pressure was still at 300# and falling slowly. Repeated the process to 1500# with the same results. Called JR Oil and NMOCD and reported results. Released packer and POOH with 150 stands and SION. Will finish pulling packer and set 4.5" CIBP just above existing packer at 13370' tomorrow.

7/24/2025 Finished pulling tubing. Set 4.5" CIBP on wireline at 13368'. RIH with tubing and tagged CIBP. Circulated MLF and shut down for thunderstorm.

7/25/2025 Spot 30 sx cement on top of CIBP at 13368'. WOC and tagged at 12998'. JR Oil Has a cement bond log for the 4.5" liner. POOH to 12770' and spot 45 sx cement. Combined the Atoka and Strawn plugs. POOH to 11815' and spot 25 sx cement. Stood back 120 stands and shut down.

7/28/2025 Finished pulling tubing. Rigged up Renegade Wireline and ran RCBL. TOC at 10460'. Reported to NMOCD and JR Oil. Perforated at 10227'. Set packer and established injection rate. Squeezed with 50 sx cement. Left packer set and SION.

7/29/2025 Opened tubing. Strong vacuum that took time to dissipate. Pumped down tubing. Took 13.5 bbls to catch fluid. Could pump 2 bbls/min at 500#. Left packer set and squeezed perforations at 10227' again with 50 sx cement with CaCl. WOC 4 hrs. Opened tubing. Slight vacuum that stopped immediately. Pressured up on plug with pump to 500# and held. Released packer and tagged cement at 10111'. POOH with tubing. Could not perforated due to mechanical issue with the wireline truck. SION

7/30/2025 Perforated at 9406'. Set packer and established rate. Could pump 2.5 bbl/min at 150#. Slight blow to the pit from the intermediate head. Squeezed with 50 sx cement with CaCl. WOC 4 hrs. Opened up tubing. Strong vacuum that dissipated slowly. Pumped down the tubing. Caught fluid with 8 bbls. Could pump 2 bbls/min at 400#. Squeezed with another 50 sx with CaCl. Shut in and shut down.

7/31/2025 Released packer and tagged cement at 9268'. POOH and perforated casing at 9100'. RIH with packer to 8812'. Could not get packer to set. POOH with packer and SION.

8/1/2025 RIH with tubing and set packer at 8978'. Squeeze perforations at 9100' with 50 sx cement with CaCl. WOIC 4 hrs. Released the packer and tagged cement at 8978'. POOH with tubing and shut down.

8/4/2025 Finished pulling tubing. Perforated casing at 7525'. Set packer at 7246' and squeezed with 50 sx cement with CaCl. WOC 4 hrs. Released packer and tagged cement at 7376'. POOH with tubing and SION.

8/5/2025 Disassembled the wellhead and exposed the 7" casing. Welded on 7" pull stub. Could not get the casing off of the slips pulling up to 190 pts. Cut casing at 5950' with Legacy segmented jet cutter. Did not come free. Shot wellhead with 1 kg of detonator cord while pulling 190 pts. Did not come free. Secured the wellhead and SION. Called for casing jacks.

8/6/2025 Did not work. Waiting on jacks.

8/7/2025 Jacks on location at 11:00 am. Worked the casing off the slips with 270 pts. Pulled 325 pts. Would not come free. Performed stretch test. Showing stuck at 7400'. That is where the last perf and squeeze was. Continued to work to free the pipe at the cut. Gave up. Pulled 310 pts with the jacks and recut the casing at 5955'. Jumped free. Pulled about 5' with the rig and got stuck again. Used the jacks to get free again. Secured the well and shut down.

8/8/2025 Used casing jacks to lay down the first 10 joints of casing. Used the rig to pull the remainder of the day. Laid down 78 joints. (about half). Secured the well and shut down.

8/11/2025 Finished laying down 7" casing. Reinstalled the wellhead and RIH with tubing to 6006'. Spot 60 sx Class C cement with CaCl inside of the 7" stub. POOH 20 stands and SION.

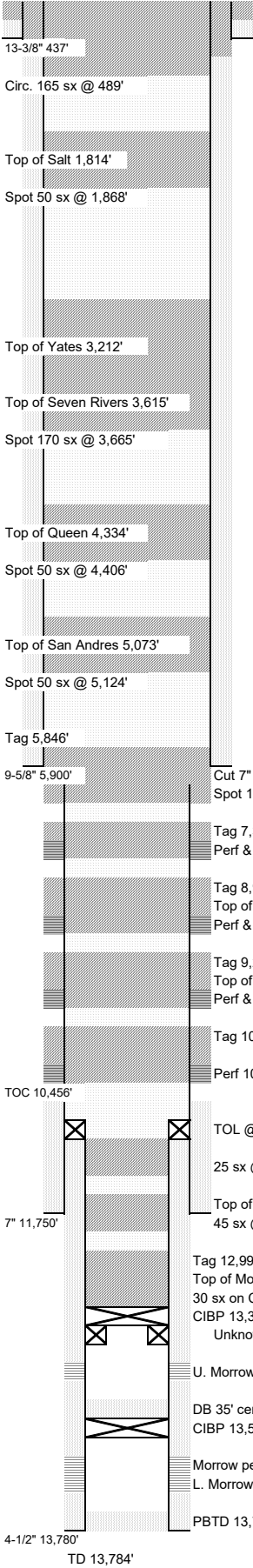
8/12/2025 Tagged cement at 5944'. Spot 50 sx cement with CaCl at 5944'. WOC 4 hrs. Tagged again at 5944'. Re-spot 50 sx cement with CaCl at 5944'. POOH with 15 stands and SION.

8/13/2025 Tagged cement at 5846'. Caught circulation and tested 9 5/8" casing to 500#. Casing good. POOH with tubing and ran RCBL. Reported to the NMOCD. RIH with tubing to 5124' and spot 50 sx cement. POOH to 4406' and spot 50 sx cement. POOH to 3665' and spot 170 sx cement. POOH to 1868' and SION.

8/14/2025 Spot 50 sx cement at 1868'. POOH to 489' and circulate cement to surface with 165 sx. Laid down remaining tubing and rig down. Dig out and remove the wellhead. Filled up the 9 5/8" and 13 3/8" casing with 15 sx cement. Majority went to the 13 3/8". Cement remained at surface. Installed standard marker.

JR Oil Ltd.

OPL Twin Berry State #1



WELL NAME: OPL Twin Berry State #1					FORMATION: Morrow			KB: 19.4					
API NO: 30-025-36823					FIELD: Vacuum			PBTD: 13,738					
SPUD DATE: September 18, 2004					COUNTY: Lea			TD: 13,784					
CASING								CEMENT & HOLE DATA					
	joints	OD	lb/ft	grade	ID (in)	drift (in)	top	bottom	bit size	depth	sacks	TOC	
Surface		13 3/8	48.00		12.715	12.559	19'	437'	17 1/2	437'	460	circ.	
Intermediate 1		9 5/8	36.00	HCK55, J55	8.921	8.765	19'	5,900'	12 1/4	5,900'	1,400	circ.	
Intermediate 2		7	26.00		6.276	6.151	19'	11,750'	8 3/4		300	10,456'	
Liner		4 1/2	11.60	SP-110	4.000	3.875	11307'	13,780'	6 1/8	13,784'	280	circ.	
History: 9/18/2004 Spud by Oxy, pickle 300 gal xylene, 500 gal 15%, displace & spot pkr fluid, dress liner top, CBL, set production pkr, TCP Morrow , IP 185 BOPD, 2,373 MCFD, 3 BWPD 7/14/2005 Spreadsheet looks like perfs were added and tbq string simplified, no records of execution 7/21/2025 MIRU, work to release OOT, equalize, att. release pkr 7/22/2025 Att. release pkr, stuck, POOH, tag pkr 13,370' 7/23/2025 Att. inject under 12,990', pressure to 1,500 psi, bled off slow 7/24/2025 CIBP @ 13,368' 7/25/2025 Spot 30 sx on plug, WOC, tag 12,998', spot 45 sx @ 12,770', spot 25 sx @ 11,815' 7/28/2025 CBL from 11,260' to surf., perf 10,227', sqz 50 sx 7/29/2025 Sqz perfs again 50 sx , WOC, pressure test plug, held 500 psi, tag 10,111' 7/30/2025 Perf 9,406', sqz 50 sx , WOC, establish injection, re-sqz 50 sx 7/31/2025 Tag 9,268', perf 9,100' 8/1/2025 Sqz 50 sx , WOC, tag 8,978' 8/4/2025 Perf 7,525', sqz 50 sx , WOC, tag 7,376' 8/5/2025 Cut 7" csg @ 5,950', att. to pull 8/7/2025 Work 7" free, re-cut @ 5,955' , pull up 8/8/2025 Lay down 7" 8/11/2025 Finish laying down 7", spot 60 sx @ 6,006' 8/12/2025 Tag 5,944', spot 50 sx @ 5,944' , WOC, tag 5,944', spot another 50 sx @ 5,944' 8/13/2025 Tag 5,846' , test 9-5/8" to 500 psi, held, CBL, spot 50 sx @ 5,124', spot 50 sx @ 4,406', spot 170 sx @ 3,665' 8/14/2025 Spot 50 sx @ 1,868', circ. 165 sx from 489' to surf. , cut off well head, fill 9-5/8 & 13-3/8 w/ 15 sx , weld on marker, RDMO, well P&A'd 55' sx @ 6,006' 1' 50 sx @ 7,525' 1' o 9,050' z 50 sx @ 9,100' 1' lfcamp 9,356' z 100 sx @ 9,406' 1' 27', sqz 100 sx 307' 1,815' oka 12,773', top of Strawn 12,432' 2,770' w 13,147' P pkr 13,370' rfs 13,458' - 86' nt 13,622' - 32' rfs 13,638' - 55' 1'								PERFORATIONS					
								top	bottom	zone	status	tll shots	date
								13,638'	13,655'	Morrow	plugged	52	01/11/05
								TUBING (none)					
									OD (in)	ID (in)	joints	length (ft)	depth (ft)

Sante Fe Main Office
Phone: (505) 476-3441

General Information
Phone: (505) 629-6116

Online Phone Directory
<https://www.emnrd.nm.gov/ocd/contact-us>

State of New Mexico
Energy, Minerals and Natural Resources
Oil Conservation Division
1220 S. St Francis Dr.
Santa Fe, NM 87505

CONDITIONS

Action 508947

CONDITIONS

Operator: J R OIL, LTD. CO. P.O. Box 53657 Lubbock, TX 79453	OGRID: 256073
	Action Number: 508947
	Action Type: [C-103] Sub. Plugging (C-103P)

CONDITIONS

Created By	Condition	Condition Date
gcordero	Clean Location in accordance with 19.15.25.10 NMAC.	9/26/2025
gcordero	Submit C-103Q within one year of plugging.	9/26/2025