

Office
District I - (575) 393-6161
1625 N. French Dr., Hobbs, NM 88240
District II - (575) 748-1283
811 S. First St., Artesia, NM 88210
District III - (505) 334-6178
1000 Rio Brazos Rd., Aztec, NM 87410
District IV - (505) 476-3460
1220 S. St. Francis Dr., Santa Fe, NM
87505

Energy, Minerals and Natural Resources

OIL CONSERVATION DIVISION
1220 South St. Francis Dr.
Santa Fe, NM 87505

| |
|---|
| WELL API NO. 30-025- 38118 |
| 5. Indicate Type of Lease STATE <input checked="" type="checkbox"/> FEE <input type="checkbox"/> |
| 6. State Oil & Gas Lease No. |
| 7. Lease Name or Unit Agreement Name Bell Lake |
| 8. Well Number 023 H |
| 9. OGRID Number 12361 |
| 10. Pool name or Wildcat Bell Lake; Cherry Canyon (5160) |

SUNDRY NOTICES AND REPORTS ON WELLS
(DO NOT USE THIS FORM FOR PROPOSALS TO DRILL OR TO DEEPEN OR PLUG BACK TO A DIFFERENT RESERVOIR. USE "APPLICATION FOR PERMIT" (FORM C-101) FOR SUCH PROPOSALS.)

1. Type of Well: Oil Well ☒ Gas Well ☐ Other ☐

2. Name of Operator
OXY USA INC

3. Address of Operator
PO BOX 4294 Houston Tx 77210

4. Well Location

Unit Letter K 1650 feet from the South line and 1650 feet from the Westline

Section 31 Township 23 S Range 34 E NMPM County Lea

11. Elevation (Show whether DR, RKB, RT, GR, etc.)
3620' GR

12. Check Appropriate Box to Indicate Nature of Notice, Report or Other Data

NOTICE OF INTENTION TO:

PERFORM REMEDIAL WORK ☐ PLUG AND ABANDON ☒
TEMPORARILY ABANDON ☐ CHANGE PLANS ☐
PULL OR ALTER CASING ☐ MULTIPLE COMPL ☐
DOWNHOLE COMMINGLE ☐
CLOSED-LOOP SYSTEM ☐
OTHER: ☐

SUBSEQUENT REPORT OF:

REMEDIAL WORK ☐ ALTERING CASING ☐
COMMENCE DRILLING OPNS. ☐ P AND A ☒
CASING/CEMENT JOB ☐
OTHER: ☐

13. Describe proposed or completed operations. (Clearly state all pertinent details, and give pertinent dates, including estimated date of starting any proposed work). SEE RULE 19.15.7.14 NMAC. For Multiple Completions: Attach. wellbore diagram of proposed completion or recompletion.


6/9/25 MIRU WSU Co Rep Abdiel Garcia Contact OCD. 6/11/25 Tag on Existing CIBP 8821'. Contact OCD Spot 80 Sacks Class H @ 8821 - 8394'. 6/12/25 Tag 8158'. Contact OCD. Set & Tag CIBP 8150'. Test good 500 psi. Spot 25 Sacks Class H 8150 - 8013'. 6/13/25 Run CBL @ 7970 - 0. Circulate 145 bbls of Salt Gel Mud. Spot 65 Sacks Class C @ 6012 - 4804'. Perforate 4700'. No rate Contact OCD Spot 50 Sacks Class C @ 4750 - 4444'. Perforate & squeeze 120 Sacks Class C @ 1350 - 1000'. 6/17/25 Tag 980'. Contact OCD. Perforate & Circulate 250 Sacks Class C @ 800 - 0. Verify Cement on Surface.

Spud Date:

Rig Release Date:

I hereby certify that the information above is true and complete to the best of my knowledge and belief.

SIGNATURE



TITLE Coordinator DATE 6/19/2025

Type or print name Salvador Spencer E-mail address: sspencer@keyenergy.com PHONE: 432 209 4373

For State Use Only

APPROVED BY: _____ TITLE _____ DATE _____

Conditions of Approval (if any):

BELL LAKE 23

Abdiel Garcia

Key 6003

API# 3002538118

WO# 4002442506

PE: Sean Lehle

RIH and tag @ 8821'. Notified NM OCD and received approval to spot 80 sx. EOT @ 8813' with 271 jts. Spot 80 sx (15.1 bbls) 15.6# Class H Cement. Displace with 48.6 bbls FW. CTOC @ 8394'. WOC & Tag TOC @ 8158'. Notify NM OCD. RIH with 7" CIBP on wireline and set @ 8150'. RIH and tag CIBP with tubing @ 8150'. Circulate 290 bbls brine. Test casing to 1000 psi and held for 10 minutes. Perform a successful bubble test on surface for 30 minutes. Notify NM OCD. Spot 25 sx (4.72 bbls) 15.6# Class H Cement on top of CIBP. WOC overnight. RIH with logging tools and tag TOC @ 7970'. Perform CBL log. Notify NM OCD. EOT @ 6012' with 185 jts. Circulate 145 bbls salt gel. Spot 25 sx (5.87 bbls) 14.8# class c cement. Displace with 33.9 bbls salt gel. CTOC @ 5863'. Notify NM OCD. Received approval from NM OCD to spot 65 sx instead of 100 sx. EOT @ 5203 with 160 jts. Spot 65 sx (15.28 bbls) 14.8# class c cement. Displace with 27.8 bbls salt gel. CTOC @ 4804'. Notify NM OCD. Packer set @ 4165'. Rig up wireline and perforate casing @ 4700'. Attempt to establish injection rate. Pressured up to 1500 psi, surge casing, and pressure back up to 1500 psi. Held for 30 minutes and Notify NM OCD and received approval to drop down and spot. EOT @ 4750' with 146 jts. Spot 50 sx (11.75 bbls) 14.8# class c cement. Displaced with 25.7 bbls salt gel. CTOC @ 4444'. WOC and tag TOC @ 4463'. Notify NM OCD. Packer set @ 685'. Rig up wireline and perforate casing @ 1350'. Rig down wireline. Establish injection rate of 2 bpm @ 100 psi. Squeeze 120 sx (28.21 bbls) 14.8# class c cement. Displace 15.9 bbls salt gel. CTOC @ 1000'. WOC overnight. RIH and Tag TOC @ 980'. Notify NM OCD. Packer set @ 68'. Rig up wireline and perforate casing @ 800'. Rig down wireline. Establish injection rate of 2 bpm @ 100 psi. Nipple down BOP and Nipple up cap flange. Circulate 250 sx (58.77 bbls) 14.8# class c cement to surface. Notify NM OCD.

Plug date: 6/25/2025







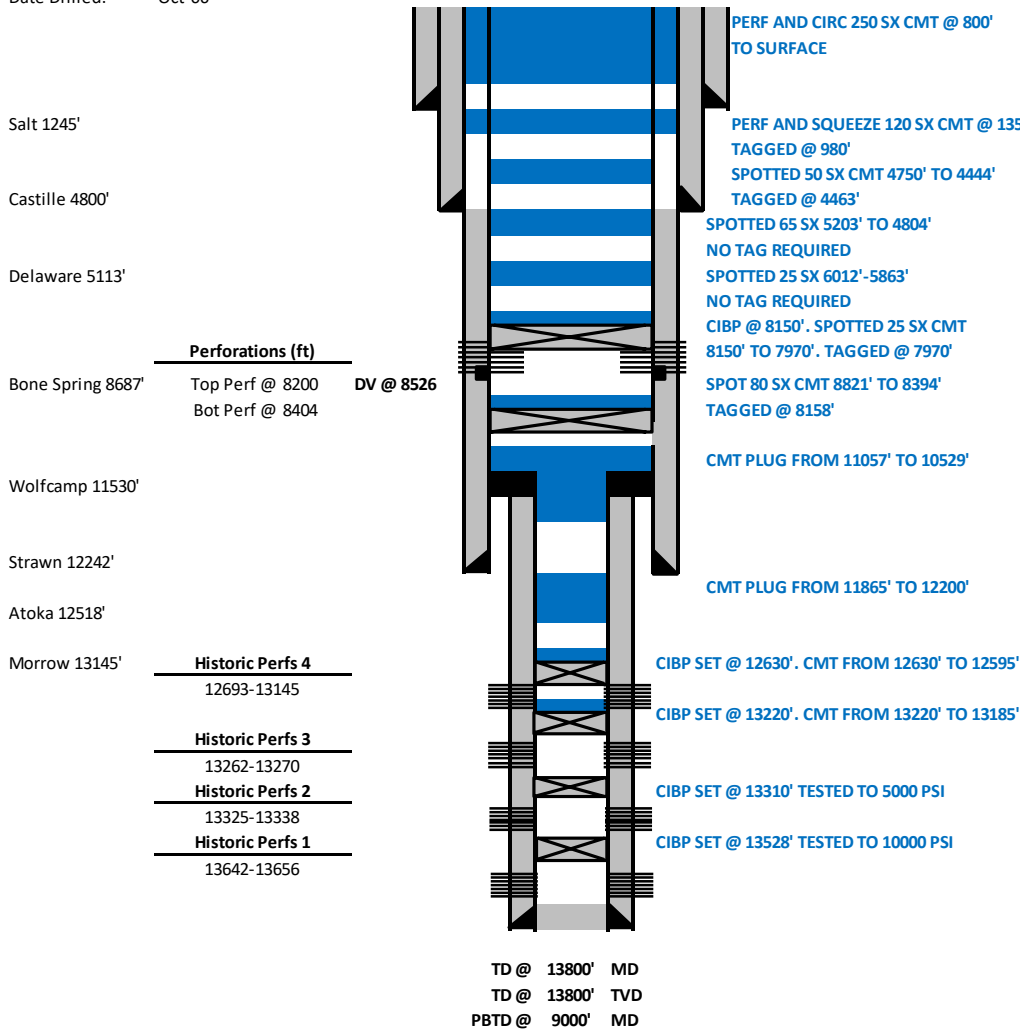




API#: 30-025-38118-0000
Lease Name: BELL LAKE
Well No: 23
County: LEA
Location: 0
Section Lines: 0

RKB Elevation: -
DF Elevation: -
Ground Elevation: 3620'
Date Drilled: Oct-06

Final P&A Wellbore



| Surface Casing | | | | | |
|----------------|------|------|------|----------|-----------|
| 13 3/8 " | 48# | H-40 | ST&C | @ | 735' |
| 12 1/4 " | Hole | | | | |
| | | | | TOC @ | Surface |
| | | | | cmt'd w/ | 1,040 sks |

| Intermediate Casing | | | | | |
|---------------------|------|-------------|-------------|----------|-----------|
| 9 5/8 " | 40# | K-55 & J-55 | LT&C & ST&C | @ | 5108' |
| 12 1/4 " | Hole | | | | |
| | | | | TOC @ | Surface |
| | | | | cmt'd w/ | 1,425 sks |

K-55 (38 jts) 5108' - 3472'
J-55 (80 jts) 3472' - 0'

| Production Casing | | | | | |
|-------------------|------|-------|------|----------|-----------|
| 7 " | 26# | P-110 | LT&C | @ | 12000' |
| 8 3/4 " | Hole | | | | |
| | | | | TOC @ | 5280' CBL |
| | | | | cmt'd w/ | 1,606 sks |

| Liner | | | | | |
|---------|-------|-------|------|----------|-------------|
| 4 1/2 " | 13.5# | P-110 | LT&C | @ | 10970-13800 |
| 8 3/4 " | Hole | | | | |
| | | | | TOC @ | - |
| | | | | cmt'd w/ | 11,032 sks |

Sante Fe Main Office
Phone: (505) 476-3441

General Information
Phone: (505) 629-6116

Online Phone Directory
<https://www.emnrd.nm.gov/ocd/contact-us>

State of New Mexico
Energy, Minerals and Natural Resources
Oil Conservation Division
1220 S. St Francis Dr.
Santa Fe, NM 87505

CONDITIONS

Action 507762

CONDITIONS

| | |
|---|--|
| Operator: KAISER-FRANCIS OIL CO PO Box 21468 Tulsa, OK 741211468 | OGRID: 12361 |
| | Action Number: 507762 |
| | Action Type: [C-103] Sub. Plugging (C-103P) |

CONDITIONS

| Created By | Condition | Condition Date |
|------------|---|----------------|
| gcordero | Clean Location in accordance with 19.15.25.10 NMAC. | 9/25/2025 |
| gcordero | Submit C-103Q within one year of plugging. | 9/25/2025 |