

Well Name: YOUNG DEEP 4 FEDERAL	Well Location: T18S / R32E / SEC 4 / SESE / 32.7710869 / -103.7649725	County or Parish/State: LEA / NM
Well Number: 02	Type of Well: OIL WELL	Allottee or Tribe Name:
Lease Number: NMNM4364	Unit or CA Name:	Unit or CA Number:
US Well Number: 3002527679	Operator: MATADOR PRODUCTION COMPANY	

Subsequent Report

Sundry ID: 2873588

Type of Submission: Subsequent Report	Type of Action: Plug and Abandonment
Date Sundry Submitted: 09/15/2025	Time Sundry Submitted: 01:44
Date Operation Actually Began: 06/27/2025	

Actual Procedure: This well was plugged as follows: • 6/27/2025: MIRU P&A equipment; Hot water treat down tbg; POOH & LD rods & pump. • 6/30/2025: NU & test BOP; Release TAC, TOO H & LD production tbg; PU workstring, start TIH. • 7/1/2025: Finish TIH w/ workstring; Spot plug #1 @ 9,480'TM (85 sks class H cmt balanced plug); TOO H; MIRU WL, PU GR/JB & RIH to 8,019'WLM, tagged obstruction and could not work through, POOH & RDMO WL. • 7/2/2025: PU 4-3/4" bit & TIH, tagged obstruction @ 8,023'TM; Rotate tbg & pushed obstruction down to 8,283'TM; Tbg became stuck & could not work free. • 7/7/2025: PU power swivel to work tbg, did not come free; MIRU WL & ran free point tool, found tbg free @8,243'WLM; Requested & received variance to cut above free point and set CIBP above fish; RDMO WL. • 7/8/2025: MIRU WL, PU jet cutting cool & make cut @ 8,242'WLM, RD WL; TOO H w/ work string; RU WL, PU GR/JB & RIH, tagged @ 8,225'WLM on suspected collar, could not work past, POOH, PU 5-1/2" 17# CIBP & set @ 8,215'WLM, RDMO WL. • 7/9/2025: TIH w/ workstring & tagged CIBP @8,215'TM; Circulated wellbore volume full MLF, pressure tested casing to 665psi for 30 minutes, 0psi leak off, good test; Pumped plug #2 @8,215'TM (35 sks class H cement balanced plug); TOO H; MIRU WL & ran RCBL tool, found TOC @2,320' WLM, RDMO WL. • 7/10/2025: Performed 30 minute bubble test, good test; TIH w/ workstring & tagged plug #2 @8,004'TM; PU & spot plug #3 @6,199'TM (25 sks class C cement balanced plug); PU & spot plug #4 @5,201'TM (25 sks class C cement balanced plug); PU & spot plug #5 @4,682'TM (50 sks class C cement balanced plug). • 7/11/2025: TIH w/ workstring & tagged plug #5 @4,215'TM; PU & spot plug #6 @3,875'TM (105 sks class C cement balanced plug), WOC 4 hours, TIH & tagged plug #6 @2,871'TM; PU & spot plug #7 @ 2,777'TM (60 sks class C cement balanced plug); TOO H. • 7/14/2025: MIRU WL, RIH & tagged plug #7 @ 2,118'WLM, PU & perf @1,445'WLM, RDMO WL; Establish circulation to intermediate casing, could not circulate to surface casing; PU test packer, set packer @ 918'TM; Squeezed plug #8 (60 sks class C cement squeeze plug), WOC 4 hours; MIRU WL, tag plug #8 @1,

Received by OCD: 9/24/2025 12:42:19 PM

Well Name: YOUNG DEEP 4
FEDERAL

Well Location: T18S / R32E / SEC 4 /
SESE / 32.7710869 / -103.7649725

County or Parish/State: LEA /
NM

Well Number: 02

Type of Well: OIL WELL

Allottee or Tribe Name:

Lease Number: NMNM4364

Unit or CA Name:

Unit or CA Number:

US Well Number: 3002527679

Operator: MATADOR PRODUCTION
COMPANY

136'WLM, perf @871' WLM, RDMO WL; Established circulation to intermediate string & injection to formation, no flow to surface casing was observed. • 7/15/2025: Squeezed plug #9 from surface (213 sks class C cement squeeze plug) to put TOC @ surface on all strings, began taking cement returns from surface casing, determined to be from a hole in the intermediate casing near surface, WOC 4 hours; Excavated cellar, cut off wellhead and found TOC at surface on production & intermediate strings, TOC in surface casing was @ 8.5', bubble test was performed on all strings, good test, surface casing was backfilled w/ class C cement from surface. • 7/16/2025: Capped all strings w/ 1/4" plate w/ weep hole & installed below ground marker with the following information: Matador Production Company, Young Deep Unit 4 Federal #002, API# 30-025-27679, Well Location: T18S/R32E/Sec 4, Date: 07/16/2025, Lea Co.; Backfilled cellar; Removed rig anchors, bladed location. Spud Date: 1/20/1982 Plug Date: RDMO; 7/16/2025 BLM Inspector: Adam Gannaway

SR Attachments

Actual Procedure

BLM_Packet_SR_PA_20250915134352.pdf

Operator

I certify that the foregoing is true and correct. Title 18 U.S.C. Section 1001 and Title 43 U.S.C. Section 1212, make it a crime for any person knowingly and willfully to make to any department or agency of the United States any false, fictitious or fraudulent statements or representations as to any matter within its jurisdiction. Electronic submission of Sundry Notices through this system satisfies regulations requiring a

Operator Electronic Signature: BRETT JENNINGS

Signed on: SEP 15, 2025 01:43 PM

Name: MATADOR PRODUCTION COMPANY

Title: Regulatory Analyst

Street Address: 5400 LBJ FREEWAY STE 1500

City: DALLASState: TX

Phone: (972) 629-2160

Email address: BRETT.JENNINGS@MATADORRESOURCES.COM

Field

Representative Name:

Street Address:

City:State:Zip:

Phone:

Email address:

Well Name: YOUNG DEEP 4
FEDERAL

Well Location: T18S / R32E / SEC 4 /
SESE / 32.7710869 / -103.7649725

County or Parish/State: LEA /
NM

Well Number: 02

Type of Well: OIL WELL

Allottee or Tribe Name:

Lease Number: NMNM4364

Unit or CA Name:

Unit or CA Number:

US Well Number: 3002527679

Operator: MATADOR PRODUCTION
COMPANY

BLM Point of Contact

BLM POC Name: JAMES A AMOS

BLM POC Title: Acting Assistant Field Manager

BLM POC Phone: 5752345927

BLM POC Email Address: JAMOS@BLM.GOV

Disposition: Accepted

Disposition Date: 09/24/2025

Signature: James A Amos

This well was plugged as follows: • 6/27/2025: MIRU P&A equipment; Hot water treat down tbg;

POOH & LD rods & pump. • 6/30/2025: NU & test BOP; Release TAC, TOOH & LD production tbg; PU workstring, start

TIH. • 7/1/2025: Finish TIH w/ workstring; Spot plug #1 @ 9,480'TM (85 sks class H cmt balanced plug); TOOH; MIRU

WL, PU GR/JB & RIH to 8,019'WLM, tagged obstruction and could not work through, POOH & RDMO WL. • 7/2/2025:

PU 4-3/4" bit & TIH, tagged obstruction @ 8,023'TM; Rotate tbg & pushed obstruction down to 8,283'TM; Tbg became

stuck & could not work free. • 7/7/2025: PU power swivel to work tbg, did not come free; MIRU WL & ran free point tool,

found tbg free @8,243'WLM; Requested & received variance to cut above free point and set CIBP above fish; RDMO

WL. • 7/8/2025: MIRU WL, PU jet cutting cool & make cut @ 8,242'WLM, RD WL; TOOH w/ work string; RU WL, PU

GR/JB & RIH, tagged @ 8,225'WLM on suspected collar, could not work past, POOH, PU 5-1/2" 17# CIBP & set @

8,215'WLM, RDMO WL. • 7/9/2025: TIH w/ workstring & tagged CIBP @8,215'TM; Circulated wellbore volume full MLF,

pressure tested casing to 665psi for 30 minutes, 0psi leak off, good test; Pumped plug #2 @8,215'TM (35 sks class H

cement balanced plug); TOOH; MIRU WL & ran RCBL tool, found TOC @2,320' WLM, RDMO WL. • 7/10/2025:

Performed 30 minute bubble test, good test; TIH w/ workstring & tagged plug #2 @8,004'TM; PU & spot plug #3

@6,199'TM (25 sks class C cement balanced plug); PU & spot plug #4 @5,201'TM (25 sks class C cement balanced

plug); PU & spot plug #5 @4,682'TM (50 sks class C cement balanced plug). • 7/11/2025: TIH w/ workstring & tagged

plug #5 @4,215'TM; PU & spot plug #6 @3,875'TM (105 sks class C cement balanced plug), WOC 4 hours, TIH &

tagged plug #6 @2,871'TM; PU & spot plug #7 @ 2,777'TM (60 sks class C cement balanced plug); TOOH. • 7/14/2025:

MIRU WL, RIH & tagged plug #7 @ 2,118'WLM, PU & perf @1,445'WLM, RDMO WL; Establish circulation to

intermediate casing, could not circulate to surface casing; PU test packer, set packer @ 918'TM; Squeezed plug #8 (60

sks class C cement squeeze plug), WOC 4 hours; MIRU WL, tag plug #8 @1,

136'WLM, perf @871' WLM, RDMO WL; Established circulation to intermediate string & injection to formation, no flow to

surface casing was observed. • 7/15/2025: Squeezed plug #9 from surface (213 sks class C cement squeeze plug) to

put TOC @ surface on all strings, began taking cement returns from surface casing, determined to be from a hole in the

intermediate casing near surface, WOC 4 hours; Excavated cellar, cut off wellhead and found TOC at surface on

production & intermediate strings, TOC in surface casing was @ 8.5', bubble test was performed on all strings, good

test, surface casing was backfilled w/ class C cement from surface. • 7/16/2025: Capped all strings w/ 1/4" plate w/ weep

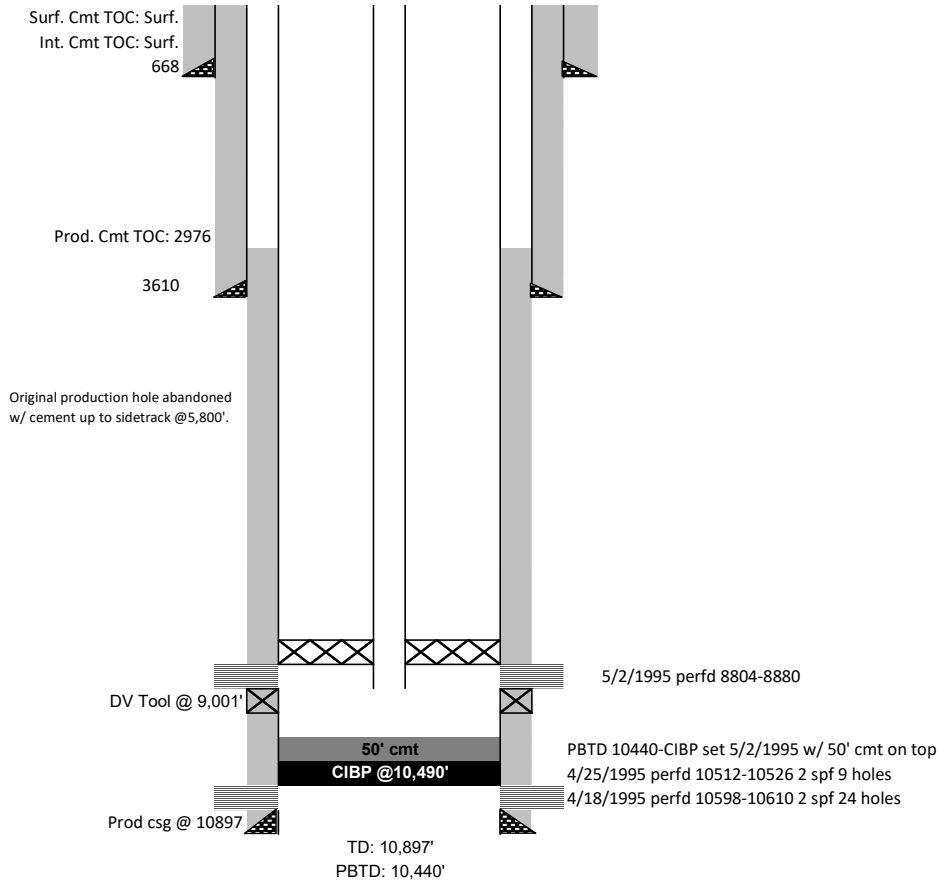
hole & installed below ground marker with the following information: Matador Production Company, Young Deep Unit 4

Federal #002, API# 30-025-27679, Well Location: T18S/R32E/Sec 4, Date: 07/16/2025, Lea Co.; Backfilled cellar;

Removed rig anchors, bladed location. Spud Date: 1/20/1982 Plug Date: RDMO; 7/16/2025 BLM Inspector: Adam

Gannaway

Young Deep Unit 4 Fed 2
660 FSL & 660' FEL Sec 4 - 18S - 32E
Lea County, NM
API: 30-025-27679
WELLBORE SCHEMATIC
Spudded: 1/20/1982



	Casing Information		Type	Weight lb/ft	Joints	Depth Set
	Hole Size	Casing Size				
Surface	17 1/2	13 3/8	ST&C J-55	48		668
Intermediate	11	8 5/8	ST&C J-55	32		3610
Production	7 7/8	5 1/2	LT&C J-55	17		10,897
	DV Tool	9,001'				
	Marker Jt.	7,719'-7,735'				
	Float Collar	10,850'				

	Cementing Record	
Surface	600 sx	Circulated to Surface
Intermediate	1500 sx	Circulated to Surface
Production	1700 sx	2,976' ~CBL Ran

Tubing			Rods		Geologic Markers	
257	joints 2 3/8" tbg	8224	Total	357	Top of Salt	821
1	TAC	8455	7/8"	103	Rustler	1209
16	joints 2 3/8" tbg	8951	3/4"	233	Base of Salt	2330
1	SN	8982	7/8"	21	Yates	2707
0	Sand Screen	8982	1"	-	7 Rivers	3136
			Pony	-	Queen	3829
			Pump		Grayburg	4324
			2 x 1 1/4 x 24' W/ BOC		San Andres	4630
					Delaware	5135
					Bone Springs	6143
					Wofcamp	9430
					Penn	10850
					C Zone	
					3rd Sand	



Matador
Production
Company
Youngs Bay
Unit Federal #002
35-025-27679
185315164
16-0025

Matador
Production
Company
Houston, Texas
Unit Federal 5002
36-025-27679
4-18532E Len
8-26-2025



Sante Fe Main Office
Phone: (505) 476-3441

General Information
Phone: (505) 629-6116

Online Phone Directory
<https://www.emnrd.nm.gov/ocd/contact-us>

State of New Mexico
Energy, Minerals and Natural Resources
Oil Conservation Division
1220 S. St Francis Dr.
Santa Fe, NM 87505

CONDITIONS

Action 509026

CONDITIONS

Operator: MATADOR PRODUCTION COMPANY One Lincoln Centre Dallas, TX 75240	OGRID: 228937
	Action Number: 509026
	Action Type: [C-103] Sub. Plugging (C-103P)

CONDITIONS

Created By	Condition	Condition Date
gcordero	None	9/26/2025