

Form 3160-5  
(June 2019)

UNITED STATES  
DEPARTMENT OF THE INTERIOR  
BUREAU OF LAND MANAGEMENT

FORM APPROVED  
OMB No. 1004-0137  
Expires: October 31, 2021

**SUNDRY NOTICES AND REPORTS ON WELLS**  
**Do not use this form for proposals to drill or to re-enter an abandoned well. Use Form 3160-3 (APD) for such proposals.**

5. Lease Serial No. **NMNM121961**

6. If Indian, Allottee or Tribe Name  
**EASTERN NAVAJO**

**SUBMIT IN TRIPLICATE - Other instructions on page 2**

1. Type of Well  
 Oil Well     Gas Well     Other

7. If Unit of CA/Agreement, Name and/or No.  
**Greater Lybrook/NMNM144419X**

8. Well Name and No. **GREATER LYBROOK UNIT/761H**

2. Name of Operator **ENDURING RESOURCES LLC**

9. API Well No. **3004538269**

3a. Address **1050 17TH STREET SUITE 2500, DENVER, CO**

3b. Phone No. (include area code)  
**(303) 573-1222**

10. Field and Pool or Exploratory Area  
**BASIN MANCOS/LYBROOK MANCOS W**

4. Location of Well (Footage, Sec., T., R., M., or Survey Description)  
**SEC 23/T23N/R09W/NMP**

11. Country or Parish, State  
**SAN JUAN/NM**

**12. CHECK THE APPROPRIATE BOX(ES) TO INDICATE NATURE OF NOTICE, REPORT OR OTHER DATA**

TYPE OF SUBMISSION	TYPE OF ACTION				
<input type="checkbox"/> Notice of Intent	<input type="checkbox"/> Acidize	<input type="checkbox"/> Deepen	<input type="checkbox"/> Production (Start/Resume)	<input type="checkbox"/> Water Shut-Off	
<input checked="" type="checkbox"/> Subsequent Report	<input type="checkbox"/> Alter Casing	<input type="checkbox"/> Hydraulic Fracturing	<input type="checkbox"/> Reclamation	<input type="checkbox"/> Well Integrity	
<input type="checkbox"/> Final Abandonment Notice	<input type="checkbox"/> Casing Repair	<input type="checkbox"/> New Construction	<input type="checkbox"/> Recomplete	<input checked="" type="checkbox"/> Other	
	<input type="checkbox"/> Change Plans	<input type="checkbox"/> Plug and Abandon	<input type="checkbox"/> Temporarily Abandon		
	<input type="checkbox"/> Convert to Injection	<input type="checkbox"/> Plug Back	<input type="checkbox"/> Water Disposal		

13. Describe Proposed or Completed Operation: Clearly state all pertinent details, including estimated starting date of any proposed work and approximate duration thereof. If the proposal is to deepen directionally or recomplete horizontally, give subsurface locations and measured and true vertical depths of all pertinent markers and zones. Attach the Bond under which the work will be performed or provide the Bond No. on file with BLM/BIA. Required subsequent reports must be filed within 30 days following completion of the involved operations. If the operation results in a multiple completion or recompletion in a new interval, a Form 3160-4 must be filed once testing has been completed. Final Abandonment Notices must be filed only after all requirements, including reclamation, have been completed and the operator has determined that the site is ready for final inspection.)

Enduring Resources performed a workover for wellbore cleanout and gas lift re-installation. An updated well schematic is attached.

EOT: 5,256 MD

Packer: None

GLVs: 4336, 3810, 3158, 2370

Orifice Valve: None End of Tubing

Job Start: 10.30.2022

Job End: 11.11.2022

14. I hereby certify that the foregoing is true and correct. Name (Printed/Typed)

**HEATHER HUNTINGTON / Ph: (505) 636-9751**

Title **Permitting Technician**

Signature

Date **12/09/2022**

**THE SPACE FOR FEDERAL OR STATE OFFICE USE**

Approved by

**KENNETH G RENNICK / Ph: (505) 564-7742 / Accepted**

Title **Petroleum Engineer**

Date **12/19/2022**

Conditions of approval, if any, are attached. Approval of this notice does not warrant or certify that the applicant holds legal or equitable title to those rights in the subject lease which would entitle the applicant to conduct operations thereon.

Office **FARMINGTON**

Title 18 U.S.C Section 1001 and Title 43 U.S.C Section 1212, make it a crime for any person knowingly and willfully to make to any department or agency of the United States any false, fictitious or fraudulent statements or representations as to any matter within its jurisdiction.

(Instructions on page 2)

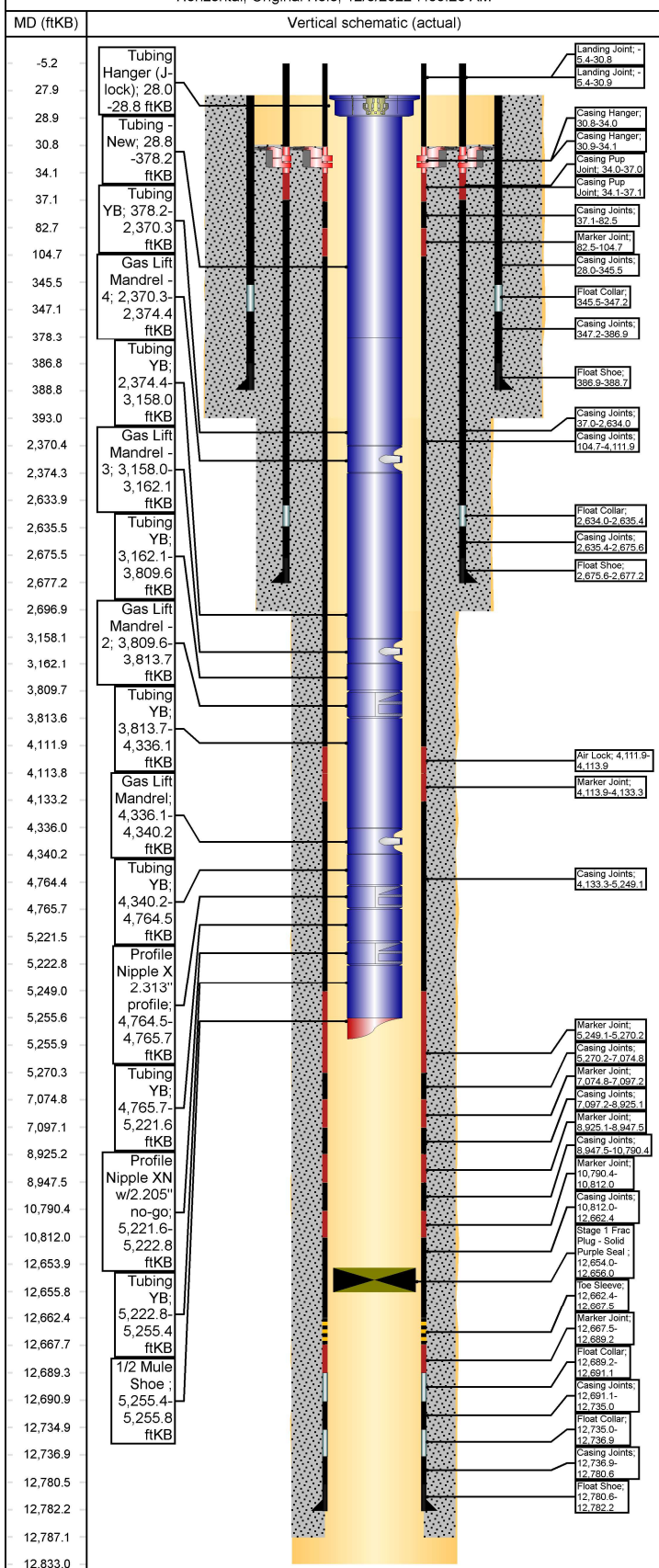


## Wellbore Schematic - Components and Cement

**Well Name: GREATER LYBROOK UNIT 761H (FKA W LYBROOK)**

API/UWI 30-045-38269	County SAN JUAN	State/Province NEW MEXICO	Surface Legal Location Unit (M), SW/4, SW/4, SEC 23, T23N, R09W
Spud Date 12/29/2021	On Production Date	Abandon Date	Ground Elevation (ft) 6,748.00
		Original KB Elevation (ft) 6,776.00	Total Depth (All) (ftKB) Original Hole - 12,833.0
			PBTD (All) (ftKB)

Horizontal, Original Hole, 12/8/2022 7:09:26 AM



String Description	String Length (ft)	Set Depth (ftKB)	Run Date
<b>Other Strings</b>			

Des	String	Top (ftKB)	Btm (ftKB)	Run Date
Stage 1 Frac Plug - Solid Purple Seal		12,654.0	12,656.0	3/13/2022 17:30

<b>Rod Strings</b>			
<b>&lt;des&gt; on &lt;dtmrun&gt;</b>			
Rod Description	String Length (ft)	Set Depth (ftKB)	Run Date
<b>Jts</b>			
Item Des	OD (in)	Len (ft)	Top (ftKB) Btm (ftKB)

<b>Tubing Strings</b>					
<b>Tubing - Production set at 5,255.8ftKB on 11/11/2022 17:00</b>					
Tubing Description	Len (ft)	Set Depth (ftKB)	Run Date	Cut/Pull Date	Depth C...
Tubing - Production	5,227.83	5,255.8	11/11/2022	2	

Jts	Item Des	OD (in)	Len (ft)	Top (ftKB)	Btm (ftKB)	Grade	Wt (lb/ft)
1	Tubing Hanger (J-lock)	4 3/4	0.80	28.0	28.8		
11	Tubing - New	2 7/8	349.36	28.8	378.2	L-80	6.50
61	Tubing YB	2 7/8	1,992.18	378.2	2,370.3	L-80	6.50
1	Gas Lift Mandrel - 4	2 7/8	4.10	2,370.3	2,374.4		
24	Tubing YB	2 7/8	783.60	2,374.4	3,158.0	L-80	6.50
1	Gas Lift Mandrel - 3	2 7/8	4.10	3,158.0	3,162.1		
20	Tubing YB	2 7/8	647.47	3,162.1	3,809.6	L-80	6.50
1	Gas Lift Mandrel - 2	2 7/8	4.10	3,809.6	3,813.7		
16	Tubing YB	2 7/8	522.35	3,813.7	4,336.1	L-80	6.50
1	Gas Lift Mandrel	2 7/8	4.10	4,336.1	4,340.2		
13	Tubing YB	2 7/8	424.35	4,340.2	4,764.5	L-80	6.50
	Profile Nipple X 2.313" profile	2 7/8	1.20	4,764.5	4,765.7		
14	Tubing YB	2 7/8	455.91	4,765.7	5,221.6	L-80	6.50
1	Profile Nipple XN w/2.205" no-go	2 7/8	1.20	5,221.6	5,222.8		
1	Tubing YB	2 7/8	32.61	5,222.8	5,255.4	L-80	6.50
1	1/2 Mule Shoe	2 7/8	0.40	5,255.4	5,255.8		

<b>Casing Strings</b>							
<b>Production, 12,782.2ftKB</b>							
Casing Description	OD (in)	Wt/Len (lb/ft)	String Grade	Top (ftKB)	Set Depth...	Depth C...	ID (in)
Production	5 1/2	17.00	J-55	-5.4	12,782.2		4.89

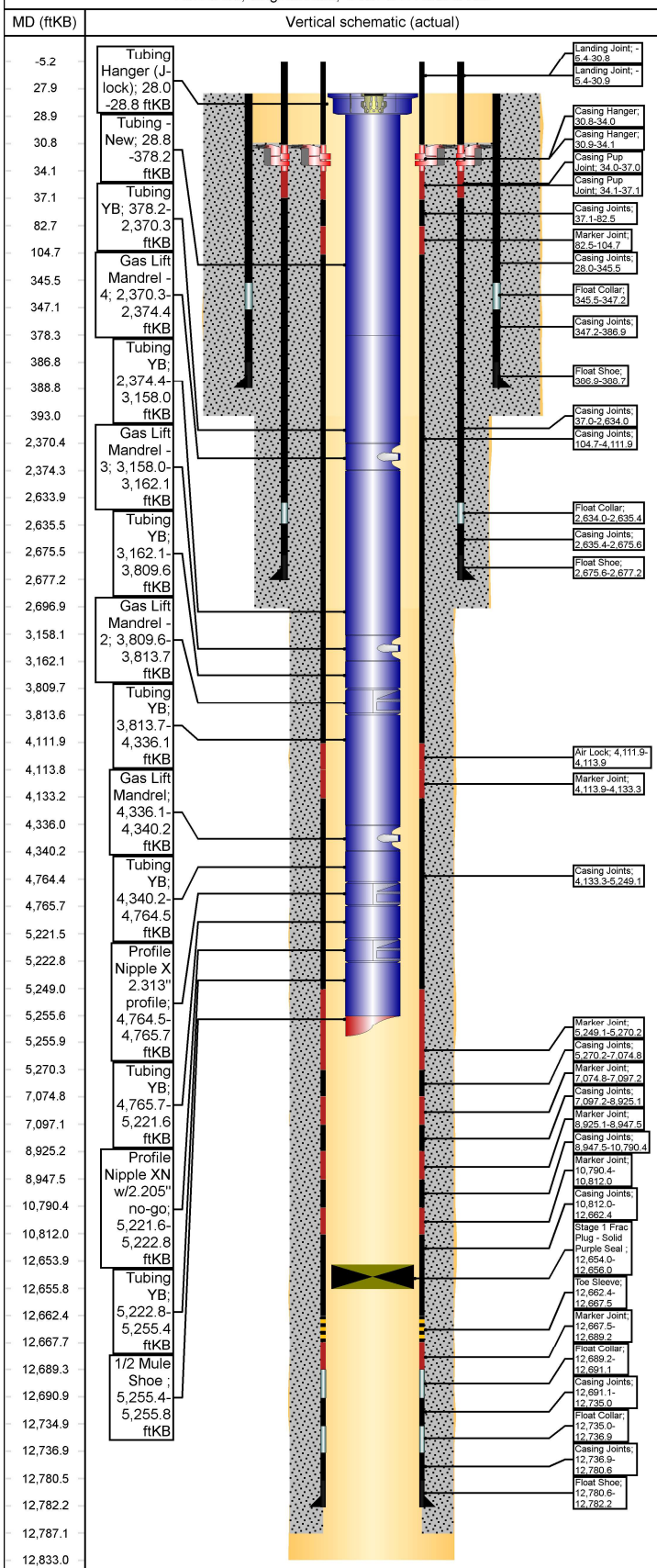
<b>Casing Components</b>							
Item Des	Jts	OD (in)	ID (in)	Wt (lb/ft)	Grade	Len (ft)	
Casing Joints	0	5 1/2	4.89	17.00	J-55	0.00	
Marker Joint	0	5 1/2	4.89	17.00	J-55	0.00	
Casing Joints	0	5 1/2	4.89	17.00	J-55	0.00	
Landing Joint	1	5 1/2	4.89	17.00	J-55	36.25	
Casing Hanger	1	5 1/2	4.89	17.00	J-55	3.20	
Casing Pup Joint	1	5 1/2	4.89	17.00	J-55	3.00	
Casing Joints	1	5 1/2	4.89	17.00	J-55	45.45	
Marker Joint	1	5 1/2	4.89	17.00	J-55	22.21	
Casing Joints	107	5 1/2	4.89	17.00	J-55	4,007.20	
Air Lock	1	5 1/2	4.89	17.00	P-110	1.92	
Marker Joint	1	5 1/2	4.89	17.00	P-110	19.41	
Casing Joints	29	5 1/2	4.89	17.00	P-110	1,115.83	
Marker Joint	1	5 1/2	4.89	17.00	P-110	21.11	
Casing Joints	45	5 1/2	4.89	17.00	P-110	1,804.55	
Marker Joint	1	5 1/2	4.89	17.00	P-110	22.42	
Casing Joints	48	5 1/2	4.89	17.00	P-110	1,827.88	
Marker Joint	1	5 1/2	4.89	17.00	P-110	22.40	



## Wellbore Schematic - Components and Cement

**Well Name: GREATER LYBROOK UNIT 761H (FKA W LYBROOK)**

Horizontal, Original Hole, 12/8/2022 7:09:28 AM



### Casing Components

Item Des	Jts	OD (in)	ID (in)	Wt (lb/ft)	Grade	Len (ft)
Casing Joints	48	5 1/2	4.89	17.00	P-110	1,842.98
Marker Joint	1	5 1/2	4.89	17.00	P-110	21.57
Casing Joints	43	5 1/2	4.89	17.00	P-110	1,850.40
Toe Sleeve	1	5 1/2	4.89	17.00	P-110	5.10
Marker Joint	1	5 1/2	4.89	17.00	P-110	21.65
Float Collar	1	5 1/2	4.89	17.00	P-110	1.92
Casing Joints	1	5 1/2	4.89	17.00	P-110	43.92
Float Collar	1	5 1/2	4.89	17.00	P-110	1.92
Casing Joints	1	5 1/2	4.89	17.00	P-110	43.65
Float Shoe	1	5 1/2	4.89	17.00	P-110	1.63

### Intermediate, 2,677.2ftKB

Casing Description	OD (in)	Wt/Len (lb/ft)	String Grade	Top (ftKB)	Set Depth...	Depth C...	ID (in)
Intermediate	9 5/8	36.00	J-55	-5.4	2,677.2		8.92

### Casing Components

Item Des	Jts	OD (in)	ID (in)	Wt (lb/ft)	Grade	Len (ft)
Casing Joints	0	9 5/8	8.92	36.00	J-55	0.00
Landing Joint	1	9 5/8	8.92	36.00	J-55	36.25
Casing Hanger	1	9 5/8	8.92	36.00	J-55	3.20
Casing Pup Joint	1	9 5/8	8.92	36.00	J-55	3.00
Casing Joints	65	9 5/8	8.92	36.00	J-55	2,596.98
Float Collar	1	9 5/8	8.92	36.00	J-55	1.35
Casing Joints	1	9 5/8	8.92	36.00	J-55	40.23
Float Shoe	1	9 5/8	8.92	36.00	J-55	1.60

### Surface, 388.7ftKB

Casing Description	OD (in)	Wt/Len (lb/ft)	String Grade	Top (ftKB)	Set Depth...	Depth C...	ID (in)
Surface	13 3/8	54.50	J-55	28.0	388.7		12.62

### Casing Components

Item Des	Jts	OD (in)	ID (in)	Wt (lb/ft)	Grade	Len (ft)
Casing Joints	8	13 3/8	12.62	54.50	J-55	317.55
Float Collar	1	13 3/8	12.62	54.50	J-55	1.62
Casing Joints	1	13 3/8	12.62	54.50	J-55	39.70
Float Shoe	1	13 3/8	12.62	54.50	J-55	1.84

### Cement

#### Surface Casing Cement, Casing, 12/30/2021 16:00

Description	String	Cementing Start Date	Cementing End Date
Surface Casing Cement	Surface, 388.7ftKB	12/30/2021 16:00	12/30/2021 18:54

### Cement Stages

Stg #	Top (ftKB)	Btm (ftKB)	Com
1	28.0	393.0	

#### Intermediate Casing Cement, Casing, 1/23/2022 17:00

Description	String	Cementing Start Date	Cementing End Date
Intermediate Casing Cement	Intermediate, 2,677.2ftKB	1/23/2022 17:00	1/23/2022 20:00

### Cement Stages

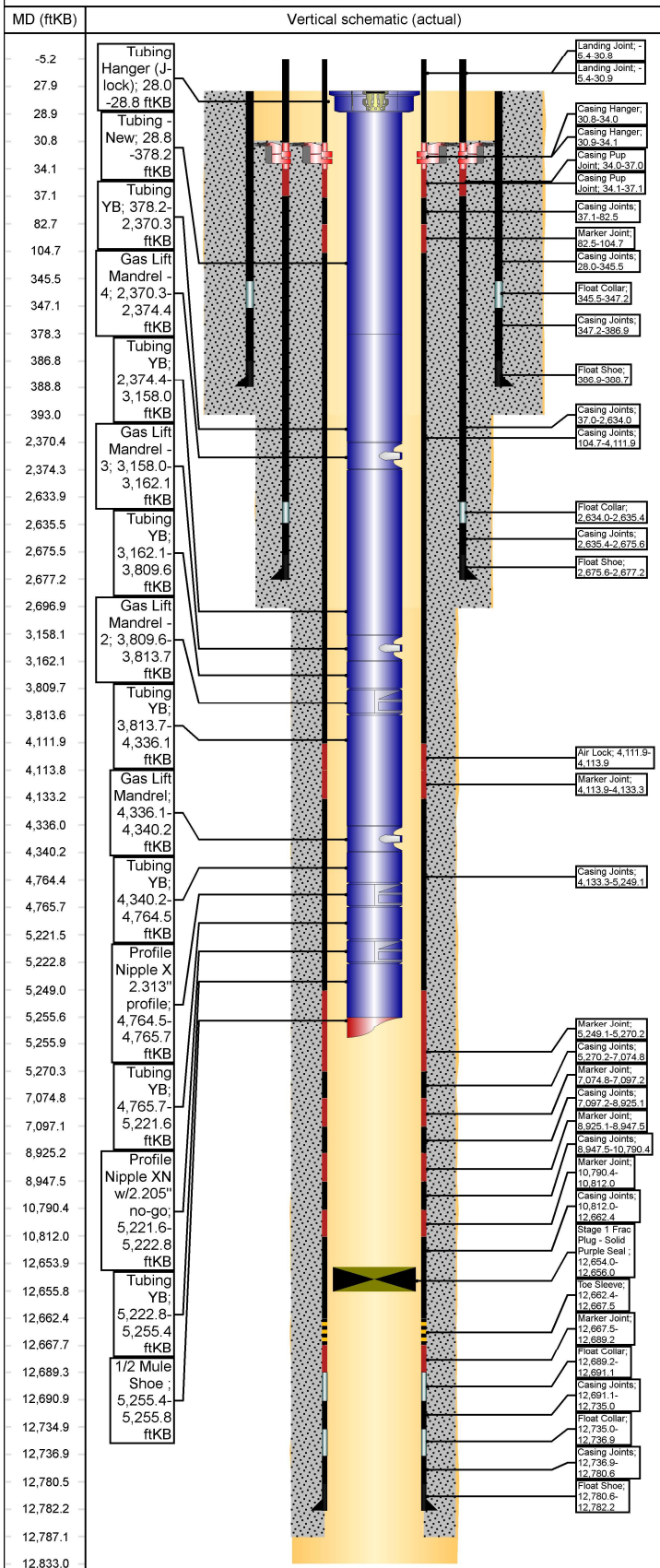
Stg #	Top (ftKB)	Btm (ftKB)	Com
1	30.8	2,697.0	Cement Offline as follows: PJSM with Drake Energy Services. Pressure tested lines to 2500 psi. Pumped 10 bbls FW, 10 bbls D-Mud Breaker, & 10 bbls of FW. Pumped Lead Cement: 193 bbls (506 sx) 90:10 Poz:Type III at 12.5 ppg, 2.14 ft3/sk, 12.05 gal H2O/sk. Pumped Tail Cement: 33 bbls (136 sx) Type III Blend at 14.6 ppg, 1.38 ft3/sk, 6.64 gal H2O/sk. Dropped plug & began displacement. Displaced with 203.6 bbls FW. FCP at 800 psi and plug bumped floats held, bleed 1.0 bbl back Maintained returns throughout job. Calculated 43 bbls to surface and got 40 bbls of good cement to surface. Top of Lead to surface and top of tail at 2,477 ft MD. Released Rig @ 13:30 1/23/2022 to the W. Lybrook Unit 729 H. ( Cement 17:00 Hour,s To 20:00 Hour,s on -1/23/2022 )



# Wellbore Schematic - Components and Cement

Well Name: GREATER LYBROOK UNIT 761H (FKA W LYBROOK)

Horizontal, Original Hole, 12/8/2022 7:09:29 AM



Cement			
<b>Production Casing Cement, Casing, 2/8/2022 21:55</b>			
Description	String	Cementing Start Date	Cementing End Date
Production Casing Cement	Production, 12,782.2ftKB	2/8/2022 21:55	2/9/2022 01:23
Cement Stages			
Stg #	Top (ftKB)	Btm (ftKB)	Com
1	30.9	12,787.2	Cement Summary: PJSM with American Cementing. Pressure tested lines to 5000 psi. Pumped 60 bbls Intraguard Star @ 11.0 ppg. Pumped Lead Cement: 200 bbls (476 sx) ASTM Type I/II at 12.4 ppg, 2.36 ft <sup>3</sup> /sk, 13.4 gal H <sub>2</sub> O/sk. Pumped Tail Cement: 403.3 bbls (1448 sx) Class G Cement at 13.3 ppg, 1.56 ft <sup>3</sup> /sk, 7.69 gal H <sub>2</sub> O/sk. Washed lines, dropped plug & began displacement. Displaced with 394 bbls FW with cement retarder in 1st 50 bbls. FCP at 1,980 psi and plug bumped at 4.0 bpm to 2900 psi. Bled back 1.0 Bbls and floats held.  Pressured up to 2900 psi 3 times bumping plug & pressure bled off each time. Checked floats and floats held.  Top of Tail: Calculated 3,937 ft MD. Top of Lead: surface Cement Back 55 BBL,  Cement in place at 01:30 on 02/09/2022

Wellbores			
<b>Original Hole</b>			
Wellbore Name	Parent Wellbore		
Original Hole	Original Hole		
Wellbore Sections			
Section Des	Size (in)	Act Top (ftKB)	Act Btm (ftKB)
Surface	17 1/2	28.0	393.0
Intermediate	12 1/4	393.0	2,697.0
Production	8 1/2	2,697.0	12,833.0

Sante Fe Main Office  
Phone: (505) 476-3441

General Information  
Phone: (505) 629-6116

Online Phone Directory  
<https://www.emnrd.nm.gov/ocd/contact-us>

**State of New Mexico**  
**Energy, Minerals and Natural Resources**  
**Oil Conservation Division**  
**1220 S. St Francis Dr.**  
**Santa Fe, NM 87505**

CONDITIONS

Action 169056

**CONDITIONS**

Operator: ENDURING RESOURCES, LLC 6300 S Syracuse Way Centennial, CO 80111	OGRID: 372286
	Action Number: 169056
	Action Type: [C-103] Sub. Workover (C-103R)

**CONDITIONS**

Created By	Condition	Condition Date
andrew.fordyce	Accepted for record.	12/5/2025