

Office
District I - (575) 393-6161
1625 N. French Dr., Hobbs, NM 88240
District II - (575) 748-1283
811 S. First St., Artesia, NM 88210
District III - (505) 334-6178
1000 Rio Brazos Rd., Aztec, NM 87410
District IV - (505) 476-3460
1220 S. St. Francis Dr., Santa Fe, NM
87505

State of New Mexico
Energy, Minerals and Natural Resources

Form C-103
Revised July 18, 2013

OIL CONSERVATION DIVISION
1220 South St. Francis Dr.
Santa Fe, NM 87505

WELL API NO. 30-045-29748
5. Indicate Type of Lease STATE [X] FEE []
6. State Oil & Gas Lease No. STATE E-3671-3
7. Lease Name or Unit Agreement Name STATE COM O
8. Well Number 12
9. OGRID Number 372171
10. Pool name or Wildcat Basin Fruitland Coal/Blanco Mesaverde/Basin Dakota

SUNDRY NOTICES AND REPORTS ON WELLS
(DO NOT USE THIS FORM FOR PROPOSALS TO DRILL OR TO DEEPEN OR PLUG BACK TO A DIFFERENT RESERVOIR. USE "APPLICATION FOR PERMIT" (FORM C-101) FOR SUCH PROPOSALS.)
1. Type of Well: Oil Well [] Gas Well [X] Other []
2. Name of Operator Hilcorp Energy Company
3. Address of Operator 382 Road 3100, Aztec, NM 87410
4. Well Location
Unit Letter I: 1825 feet from the South line and 790 feet from the East line
Section 16 Township 029N Range 008W NMPM County SAN JUAN
11. Elevation (Show whether DR, RKB, RT, GR, etc.) 6396' GL

12. Check Appropriate Box to Indicate Nature of Notice, Report or Other Data

NOTICE OF INTENTION TO:
PERFORM REMEDIAL WORK [] PLUG AND ABANDON []
TEMPORARILY ABANDON [] CHANGE PLANS []
PULL OR ALTER CASING [] MULTIPLE COMPL []
DOWNHOLE COMMINGLE []
CLOSED-LOOP SYSTEM []
OTHER: [] RECOMPLETE []
SUBSEQUENT REPORT OF:
REMEDIAL WORK [] ALTERING CASING []
COMMENCE DRILLING OPNS. [] P AND A []
CASING/CEMENT JOB []
OTHER: COMMINGLE [X]

13. Describe proposed or completed operations. (Clearly state all pertinent details, and give pertinent dates, including estimated date of starting any proposed work). SEE RULE 19.15.7.14 NMAC. For Multiple Completions: Attach wellbore diagram of proposed completion or recompletion.

The isolation plug was drilled out after DHC approval, and the well is now producing as trimmed Fruitland Coal/Mesaverde/ Dakota. See attached reports.

Spud Date: [] Rig Release Date: []

I hereby certify that the information above is true and complete to the best of my knowledge and belief.

SIGNATURE Cherylene Weston TITLE Operations/Regulatory Tech-Sr. DATE 12/22/2024

Type or print name Cherylene Weston E-mail address: cweston@hilcorp.com PHONE: 713-289-2615

For State Use Only

APPROVED BY: TITLE DATE

Conditions of Approval (if any):



Well Operations Summary L48

Well Name: STATE COM O #12

API: 3004529748	Field: MV/DK COM	State: NEW MEXICO
Permit to Drill (PTD) #:	Sundry #:	Rig/Service: RIO 22

Jobs

Actual Start Date: 6/28/2024 **End Date:** 12/20/2024

Report Number 9	Report Start Date 12/17/2024	Report End Date 12/17/2024
--------------------	---------------------------------	-------------------------------

Operation

RIG CREW TRAVELED TO THE STATE UNICON COM 1F. STARTED RIG AND EQUIPMENT. PREP FOR MOVE.
 MOVE RIG AND SUPPORT EQUIPMENT TO THE STATE COM O #12. PLUNGER EQUIPMENT REMOVED FROM THE WELL THIS MORNING PRIOR TO THE RIG MOVE.
 RIG UP RIG AND SUPPORT EQUIPMENT. PRE-JOB SAFETY MEETING. TOOK PRESSURES ON WELL. CASING 48 PSI. TUBING 48 PSI. BH 0 PSI. BLOW WELL DOWN IN 10 MINUTES.
 DRY ROD TWC IN TUBING HANGER. ND WH. NU BOP. TEST BOP PIPE AND BLIND RAMS TO 250 PSI LOW AND 2600 PSI HIGH. TEST GOOD. PULL TUBING HANGER TO THE RIG FLOOR. REMOVE TWC AND HANGER.
 TRIP OUT OF THE HOLE WITH THE 2 3/8" TUBING FROM A DEPTH OF 3061' WITH 48 STANDS OF TUBING.
 MAKE UP 3 7/8" JUNK MILL. TRIP IN THE HOLE WITH 48 STANDS OF TUBING TO A DEPTH OF 3050'. THEN TALLY. PICK UP AND TRIP IN THE HOLE TO A TAG UP DEPTH OF 4429'/CIBP.
 TRIP OUT OF THE HOLE FROM CIBP AT 4429' TO ABOVE TOP PERF AT 2891' WITH 25 STANDS OF TUBING. GAVE ENGINEER TREY MISURACA AN UPDATE ON TAG UP DEPTH.
 SHUT THE WELL IN. SECURE LOCATION. SHUT DOWN DOR THE DAY.
 TRAVEL TO YARD.

Report Number 10	Report Start Date 12/18/2024	Report End Date 12/18/2024
---------------------	---------------------------------	-------------------------------

Operation

RIG CREW TRAVELED TO LOCATION.
 SAFETY MEETING WITH CREW. TOOK PRESSURES ON WELL. CASING 50 PSI. TUBING 0 PSI. BH 0 PSI. BLOW WELL DOWN IN 10 MINUTES.
 TRIP IN THE HOLE WITH THE 3 7/8" JUNK MILL FROM A DEPTH OF 2859' TO **CIBP AT 4429'**. RIG UP POWER SWIVEL.
 BRING ON TWO AIR UNITS AT 2000 CFM WITH 12 BBL PER HOUR AIR FOAM MIST. ESTABLISH GOOD CIRCULATION TO CLEAN OUT TANK. STARTING MILLING OPS AT 8:30AM. **MILLED THRU PLUG** BY 11:00AM. CIRCULATE HOLE CLEAN. RETURNS WERE CIBP PARTS AND A TRACE OF SAND. SHUT AIR UNITS DOWN. HANG BACK SWIVEL
 TALLY. PICK UP AND TRIP IN THE HOLE FROM 4429' TO TAG DEPTH OF 7511'. 35' FROM PBTD OF 7546'. RIG UP SWIVEL.
 BRING ON TWO AIR UNITS AT 2000 CFM AND 12 BBL PER HOUR MIST. ATTEMPT TO BREAK CIRCULATION WITH MIST. NO SUCCESS. SHUT AIR UNITS DOWN AFTER 2 HOURS.
 LAY DOWN 1 JOINT OF TUBING. HANG BACK SWIVEL. TRIP OUT OF THE HOLE WITH 10 STANDS OF TUBING TO A DEPTH OF 7168'. TOP DK PERF AT 7316'. WELL STARTED UNLOADING AS WE WERE TRIPPING OUT OF THE HOLE.
 SHUT THE WELL IN. DRAIN UP EQUIPMENT. SECURE LOCATION. SHUT DOWN FOR THE DAY.
 TRAVEL TO YARD.

Report Number 11	Report Start Date 12/19/2024	Report End Date 12/19/2024
---------------------	---------------------------------	-------------------------------

Operation

TRAVEL TO LOCATION.
 SAFETY MEETING WITH CREW. TOOK PRESSURES ON WELL. CASING 140 SPI. TUBING 0 PSI. BH 0 PSI. BLOW WELL DOWN IN 10 MINUTES.
 TRIP IN THE HOLE FROM 7168' TO 7511' WITH THE 3 7/8" JUNK MILL. RIG UP SWIVEL.
 BRING ON 2 AIR UNITS AT 12 BBL PER HOUR AIR FOAM MIST. ESTABLISH CIRCULATION TO CLEAN OUT TANK IN 90 MINUTES. CLEAN OUT FILL TO FROM 7511' TO 7524'. TAGGING SOLID AT THAT DEPTH. COULD NOT GO ANY FURTHER. CALLED ENGINEER TREY MISURACA ABOUT THE FINAL CLEAN OUT DEPTH. HE WAS GOOD WITH STOPPING MILL OUT OPS AT 7524. RETURNS WERE PLUG PARTS AND TRACE OF SAND. SHUT AIR UNITS DOWN. HANG BACK SWIVEL. LAY DOWN TWO JOINTS OF TUBING.
 TRIP OUT OF THE HOLE WITH THE 3 7/8" JUNK MILL FROM FINAL CLEAN OUT DEPTH OF 7524'. WELL BLOWING STRONG. PUMPED A 60 BBL KILL ON THE WELL TO GET THE MILL OUT OF THE HOLE.
 MAKE UP 16' PRICE TYPE MUD ANCHOR. 1.780 ID SEATING NIPPLE. TRIP IN THE HOLE WITH **2 3/8" TUBING TO LAND DEPTH OF 7505.35'**. WITH SEATING NIPPLE AT A DEPTH OF 7488'.
 ND BOP. NU WH.
 SHUT THE WELL IN. SECURE LOCATION. SHUT DOWN FOR THE DAY.
 TRAVEL TO THE YARD.

Report Number 12	Report Start Date 12/20/2024	Report End Date 12/20/2024
---------------------	---------------------------------	-------------------------------

Operation

RIG CREW TRAVELED TO LOCATION. START RIG AND EQUIPMENT.
 SAFETY MEETING. TOOK PRESSURES ON WELL. CASING 100 PSI. TUBING 0 PSI. BH 0 PSI. BLOW WELL DOWN IN 10 MINUTES
 PICK UP 2 'X 1-1/4" X 12' X 13' X 17" RHBC-Z- HVR PUMP(HIL 1105) BUCKET TEST PUMP GOOD. 1' x 1" LIFT SUB. 3/4" X 8' GUIDED PONY. 21K SHEAR TOOL. EIGHT 1-1/4" SINKER BARS. 180 3/4" SLICK RODS. 111 7/8" SLICK RODS. ONE 4'X 7/8" PONY ROD AND THE 22' X 1-1/4" POLISH ROD. SEAT PUMP IN SEATING NIPPLE AT 7488'. PRESSURE TEST TUBING TO 800 PSI. TEST GOOD. BLEED PRESSURE DOWN TO 100 PSI. LONG STROKE PUMP WITH RIG. PRESSURE WENT TO 400 PSI IN 5 STROKES. BLEED PRESSURE DOWN TO 0 PSI. OPEN VALVE ON PUMPING TEE. STROKED PUMP WITH RIG. WATER OUT 2" BALL VALVE. SHUT THE WELL IN.
 RIG DOWN RIG AND SUPPORT EQUIPMENT. STACK RIG AND EQUIPMENT ON THE EDGE OF LOCATION. SECURE LOCATION. JOB IS COMPLETE. TURN WELL OVER TO PRODUCTION OPERATIONS.
 RIG CREW TRAVELED TO YARD.



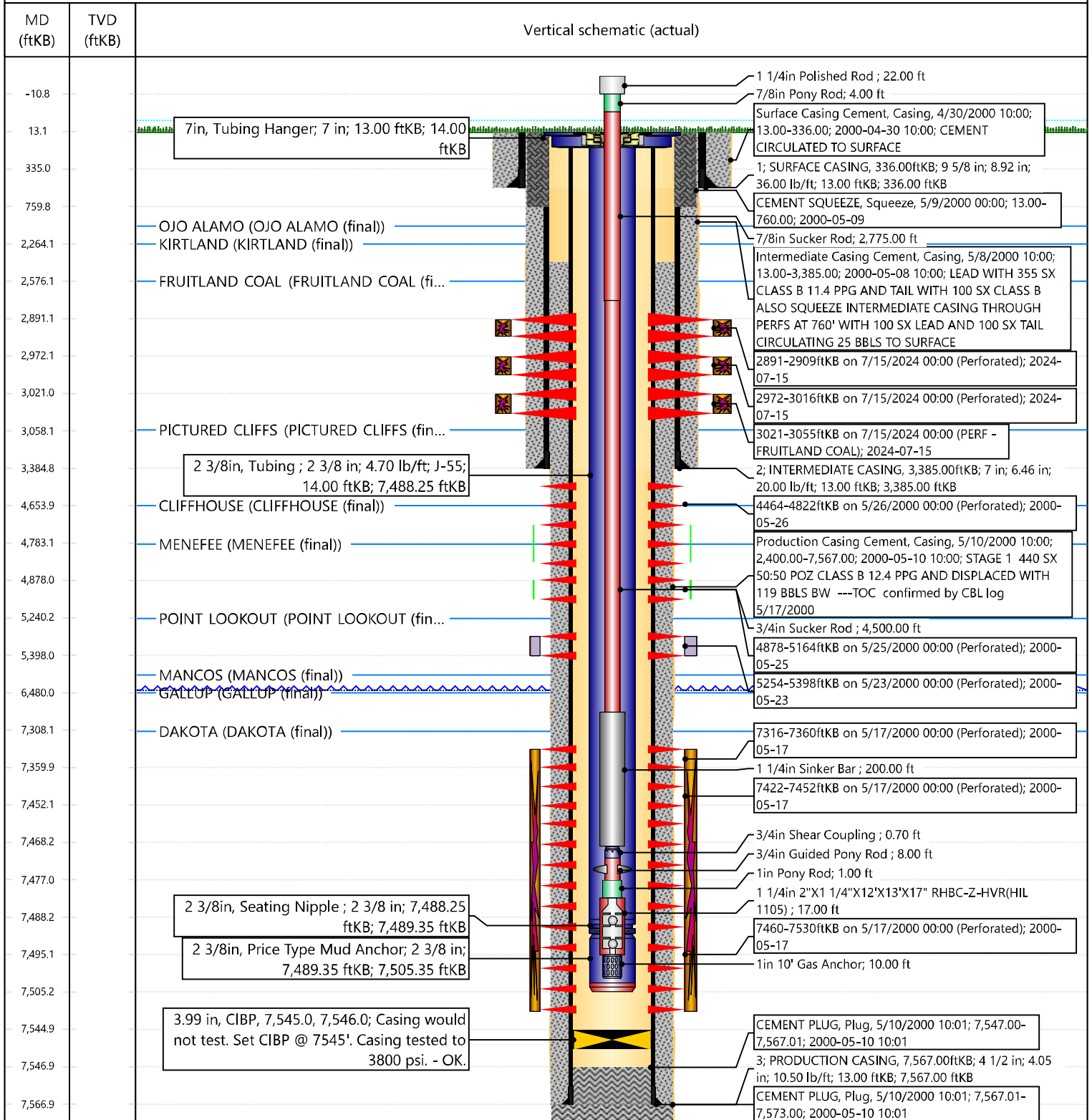
Current Schematic - Version 3

Well Name: STATE COM O #12

API / UWI 3004529748	Surface Legal Location 016-029N-008W-I	Field Name MV/DK COM	Route 0801	State/Province NEW MEXICO	Well Configuration Type Vertical
Ground Elevation (ft) 6,396.00	Original KB/RT Elevation (ft) 6,409.00	Tubing Hanger Elevation (ft) 6,398.00	RKB to GL (ft) 13.00	KB-Casing Flange Distance (ft) 11.00	KB-Tubing Hanger Distance (ft) 11.00

Tubing Strings					
Run Date 12/19/2024 13:00	Set Depth (ftKB) 7,505.35	String Max Nominal OD (in) 2 3/8	String Min Nominal ID (in) 2.00	Weight/Length (lb/ft) 4.70	Original Spud Date 4/30/2000 00:00

Original Hole [Vertical]



Sante Fe Main Office
Phone: (505) 476-3441

General Information
Phone: (505) 629-6116

Online Phone Directory
<https://www.emnrd.nm.gov/ocd/contact-us>

State of New Mexico
Energy, Minerals and Natural Resources
Oil Conservation Division
1220 S. St Francis Dr.
Santa Fe, NM 87505

CONDITIONS

Action 417579

CONDITIONS

Operator: HILCORP ENERGY COMPANY 1111 Travis Street Houston, TX 77002	OGRID: 372171
	Action Number: 417579
	Action Type: [C-103] Sub. Workover (C-103R)

CONDITIONS

Created By	Condition	Condition Date
andrew.fordyce	None	12/30/2025