

Submit a Copy To Appropriate District
Office
District I – (575) 393-6161
1625 N. French Dr., Hobbs, NM 88240
District II – (575) 748-1283
811 S. First St., Artesia, NM 88210
District III – (505) 334-6178
1000 Rio Brazos Rd., Aztec, NM 87410
District IV – (505) 476-3460
1220 S. St. Francis Dr., Santa Fe, NM
87505

State of New Mexico
Energy, Minerals and Natural Resources

Form C-103
Revised July 18, 2013

OIL CONSERVATION DIVISION
1220 South St. Francis Dr.
Santa Fe, NM 87505

WELL API NO. 30-045-22239
5. Indicate Type of Lease STATE <input type="checkbox"/> FEE <input type="checkbox"/>
6. State Oil & Gas Lease No.
7. Lease Name or Unit Agreement Name Gallegos Canyon Unit
8. Well Number 268
9. OGRID Number 000778
10. Pool name or Wildcat West Kutz Pictured Cliffs
11. Elevation (Show whether DR, RKB, RT, GR, etc.) 5,679', GL

SUNDRY NOTICES AND REPORTS ON WELLS

(DO NOT USE THIS FORM FOR PROPOSALS TO DRILL OR TO DEEPEN OR PLUG BACK TO A DIFFERENT RESERVOIR. USE "APPLICATION FOR PERMIT" (FORM C-101) FOR SUCH PROPOSALS.)

1. Type of Well: Oil Well ☐ Gas Well ☒ Other

2. Name of Operator
SIMCOE LLC

3. Address of Operator
1199 Main Ave, Suite 101, Durango, CO 81301

4. Well Location

Unit Letter P : 430 feet from the South line and 430 feet from the East line
Section 32 Township 28N Range 12W NMPM San Juan County

12. Check Appropriate Box to Indicate Nature of Notice, Report or Other Data

NOTICE OF INTENTION TO:

PERFORM REMEDIAL WORK ☐ PLUG AND ABANDON ☒
TEMPORARILY ABANDON ☐ CHANGE PLANS ☐
PULL OR ALTER CASING ☐ MULTIPLE COMPL ☐
DOWNHOLE COMMINGLE ☐
CLOSED-LOOP SYSTEM ☐
OTHER: ☐

SUBSEQUENT REPORT OF:

REMEDIAL WORK ☐ ALTERING CASING ☐
COMMENCE DRILLING OPNS. ☐ P AND A ☐
CASING/CEMENT JOB ☐
OTHER: ☐

13. Describe proposed or completed operations. (Clearly state all pertinent details, and give pertinent dates, including estimated date of starting any proposed work). SEE RULE 19.15.7.14 NMAC. For Multiple Completions: Attach wellbore diagram of proposed completion or recompletion.

See the attached plugging plan for full details of the proposed P&A on the GCU 268 well.

Spud Date:

Rig Release Date:

I hereby certify that the information above is true and complete to the best of my knowledge and belief.

SIGNATURE _____ TITLE Regulatory Analyst DATE 01/12/26

Type or print name Christy Kost E-mail address: christy.kost@machnr.com PHONE: 405-905-8672

For State Use Only

APPROVED BY: _____ TITLE _____ DATE _____

Conditions of Approval (if any):

GALLEGOS CANYON UNIT #268

3004522239

430 FSL 430 FEL P-32-28N-12W

SAN JUAN COUNTY, NM

OBJECTIVE: Permanently plug and abandon the GCU 268. All cement volumes use 100% excess outside casing and 50' excess inside pipe. Stabilizing wellbore fluid will be 8.3 ppg, sufficient to balance all expose formation pressures. All cement will be ASTM Class G neat yield or equivalent. If casing pressure tests, tagging plugs will not be required. Prior to rig, notify NMOCD and BLM, and see attached COAs.

1. MIRU. Check casing, tubing, and BH pressures and report daily.
2. Remove existing piping on casing valve. RU blow lines and blow down pressure. Kill well as necessary.
3. POOH pump/rods.
4. ND WH, NU BOP.
5. POOH tubing.
6. Set CIBP at 1256'.
7. Load wellbore and pressure test casing to 500 psi.
8. RU WL, run CBL from top of CIBP at 1256' to surface.
9. **PICTURED CLIFFS AND FRUITLAND PLUG** – RIH and spot 28 sx Class G cement from 1256'-950'.
10. POOH tubing.
11. **KIRTLAND, OJO ALAMO, and SURFACE PLUG** – Pump 100 sx Class G cement down tubing and up casing from 200' to surface. POOH tubing.
12. ND BOPE, cut off wellhead below surface casing flange per regulation. Top off w/ cement if needed. Install below grade P&A marker w/ cement to comply w/ regulations. RDMO

GCU 268 PC
Pictured Cliffs
API# 30-045-22239
Unit P - Sec 32 - T28N - R12W
San Juan County, New Mexico

KB: 5688'
GL: 5679'

9-7/8" Hole
7", 23#, K-55 @ 90'
Cmt w/ 60 sx Class A w/ 3% CaCl2
Circulated to surface

Formation Tops

Ojo Alamo 50'
Kirtland 150'
Fruitland 1000'
Pictured Cliffs 1285'

3/4" Rods
2x1.25x9 RHAC

2-3/8" Tubing
1.875" XN Nipple @ 1324'
1.78" F Nipple @ 1329'
EOT @ 1347'

PC Perforations
1306'-1320' w/ 4 spf
1320'-1330' w/ 1 spf
1363'-1367' w/ 1 spf
1372'-1378' w/ 1 spf

Frac'd w/ 10,000 gal foam
carrying 10,500 lbs 20/40

6-1/4" hole
4-1/2" 10.5#, J-55 @ 1442'
Cmt with 110 sx Class A
Circulated to surface

PBTD: 1353'
TD: 1443'

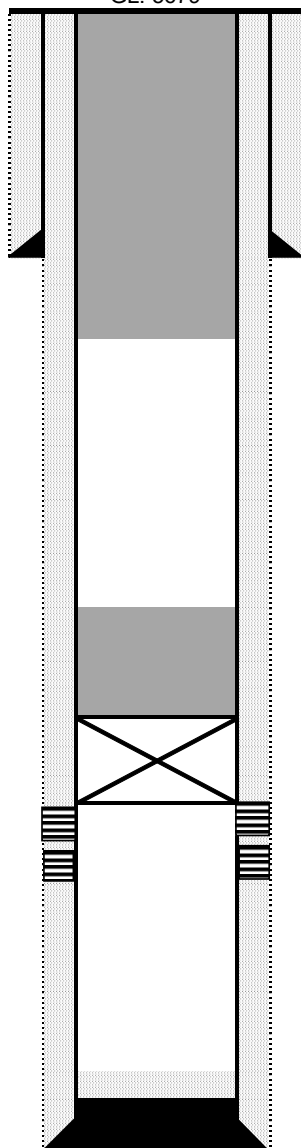
KB: 5688'
GL: 5679'

GCU 268 PC

Pictured Cliffs
API# 30-045-22239
Unit P - Sec 32 - T28N - R12W
San Juan County, New Mexico

Formation Tops

Ojo Alamo	50'
Kirtland	150'
Fruitland	1000'
Pictured Cliffs	1285'



9-7/8" Hole
7", 23#, K-55 @ 90'
Cmt w/ 60 sx Class A w/ 3% CaCl2
Circulated to surface

Plug 2 - Surface, Ojo, Kirtland
100 sx Class G
0-200'

Plug 1 - Fruitland and PC
28 sx Class G
950-1256'

PC Perforations

1306'-1320' w/ 4 spf
1320'-1330' w/ 1 spf
1363'-1367' w/ 1 spf
1372'-1378' w/ 1 spf

Frac'd w/ 10,000 gal foam
carrying 10,500 lbs 20/40

6-1/4" hole
4-1/2" 10.5#, J-55 @ 1442'
Cmt with 110 sx Class A
Circulated to surface

PBTD: 1353'
TD: 1443'

State of New Mexico
Energy, Minerals and Natural Resources Department
Oil Conservation Division
Standard Plugging Conditions



This document provides OCD's general plugging conditions of approval. It should be noted that the list below may not cover special plugging programs in unique and unusual cases, and OCD expressly reserves the right to impose additional requirements to the extent dictated by project conditions. The OCD also reserves the right to approve deviations from the below conditions if field conditions warrant a change. A C-103F NOI to P&A must be approved prior to plugging operations. Failure to comply with the conditions attached to a plugging approval may result in a violation of 19.15.5.11 NMAC, which may result in enforcement actions, including but not limited to penalties and a requirement that the well be re-plugged as necessary.

1. Notify OCD office at least 24 hours before beginning work and seek prior approval to implementing any changes to the C-103 NOI to PA.
 - North Contact, Monica Kuehling, 505-320-0243, monica.kuehling@emnrd.nm.gov
 - South Contact, Gilbert Cordero, 575-626-0830, gilbert.cordero@emnrd.nm.gov
2. A Cement Bond Log is required to ensure strata isolation of producing formations, protection of water and correlative rights. A CBL must be run or be on file that can be used to properly evaluate the cement behind the casing.

Note: Logs must be submitted to OCD via OCD permitting. A copy of the log may be emailed to OCD inspector for faster review times, but emailing does not relieve the operators obligation to submit through OCD permitting.

3. Once Plugging operations have commenced, the rig must not rig down until the well is fully plugged without OCD approval. If gap in plugging operations exceeds 30 days, the Operator must file a subsequent sundry of work performed and revised NOI for approval on work remaining. At no time shall the rig be removed from location if it will result in waste or contamination of fresh water.
4. Insure all bradenheads have been exposed, identified and valves are operational prior to rig up.
5. Fluids must be placed between all cement plugs mixed at 25 sacks per 100 bbls of water.
 - North, water or mud laden fluids
 - South, mud laden fluids
6. Closed loop system is to be used for entire plugging operation. Upon completion, contents of steel pits are to be hauled to an OCD permitted disposal facility.

7. Class of cement shall be used in accordance with the below table for depth allowed.

Class	TVD Lower Limit (feet)
Class A/B	6,000
Class I/II	6,000
Class C or III	6,000
Class G and H	8,000
Class D	10,000
Class E	14,000
Class F	16,000

8. After cutting the well head any “top off cement jobs” must remain static for 30 minutes. Any gas bubbles or flow during this 30 minutes shall be reported to the OCD for approval of next steps.
9. Trucking companies being used to haul oilfield waste fluids (Commercial or Private) to a disposal facility shall have an approved OCD C-133 permit.
- A copy of this permit shall be available in each truck used to haul waste products.
 - It is the responsibility of the Operator and Contractor to verify that this permit is in place prior to performing work.
 - Drivers shall be able to produce a copy upon request of an OCD Compliance Officer.
10. Filing a [C-103] Sub. Plugging (C-103P) will serve as notification that the well has been plugged.
11. A [C-103] Sub. Release After P&A (C-103Q) shall be filed no later than a year after plugging and a site inspection by OCD Compliance officer to determine if the location is satisfactorily cleaned, all equipment, electric poles and trash has been removed to meet OCD standards before bonding can be released.
12. Produced water or brine-based fluids **may not** be used during any part of plugging operations without **prior OCD approval**.
13. Cementing;
- All cement plugs will be neat cement and a minimum of 100’ in length. 50’ of calculated cement excess required for inside casing plugs and 100% calculated cement excess required on outside casing plugs.
 - If cement does not exist between or behind the casing strings at recommended formation depths, the casing perforations will be shot at 50’ below the formation top and the cement retainer shall be set no more than 50’ from the perforations.
 - WOC (Wait on Cement) time will be:
 - 4 hours for accelerated (calcium chloride) cement.
 - 6 hours on regular cement.
 - Operator must tag all cement plugs unless it meets the below condition.
 - The operator has a passing pressure test for the casing annulus and the plug is only an inside plug.
 - If perforations are made operator must tag all plugs using the work string to tag unless given approval to tag with wireline by the correct contact from COA #1 of this document.
 - This includes plugs pumped underneath a cement retainer to ensure retainer seats properly after cement is pumped.
 - Cement can only be bull-headed with specific prior approval.
 - Squeeze pressures are not to exceed the exposed formations frac gradient or the burst pressure of the casing.

14. A cement plug is required to be set from 50' below to 50' above (straddling) formation tops, casing shoes, casing stubs, any attempted casing cut offs, anywhere the casing is perforated, DV tools.
- Perforation/Formation top plug. (When there is less than 100ft between the top perforation to the formation top.) These plugs are required to be started no greater than 50ft from the top perforation. However, the plug should be set below the formation top or as close to the formation top as possible for the maximum isolation between the formations. The plug is required to be a 100ft cement plug plus excess.
 - Perforation Plug when a formation top is not included. These plugs are required to be started within 50ft of the top perforation. The plug is required to be a 100ft cement plug plus excess.
 - Cement caps on top of bridge plugs or cement retainers for perforation plugs, that are not straddling a formation top, may be set using a bailer with a minimum of 35' of cement in lieu of the 100' plug. The bridge plug or retainer must be set within 50ft of the perforations.
 - Perforations are required below the surface casing shoe if cement does not exist behind the casing, a 30-minute minimum wait time will be required immediately after perforating to determine if gas and/or water flows are present. If flow is present, the well will be shut-in for a minimum of one hour and the pressure recorded. If gas is detected contact the OCD office for directions.
15. No more than 3000 feet is allowed between cement plugs in cased hole and no more than 2000 feet is allowed in open hole.
16. Formation Tops to be isolated with cement plugs, but not limited to are:
- Northwest See Figure A
 - South (Artesia) See Figure B
 - Potash See Figure C
 - In the R-111-P (Or as subsequently revised) Area a solid cement plug must be set across the salt section. Fluid used to mix the cement shall be saturated with the salts that are common to the section penetrated and in suitable proportions, not more than 3% calcium chloride (by weight of cement) will be considered the desired mixture whenever possible, woe 4 hours and tag, this plug will be 50' below the bottom and 50' above the top of the Formation.
 - South (Hobbs) See Figure D1 and D2
 - Areas not provided above will need to be reviewed with the OCD on a case by case basis.
17. Markers
- Dry hole marker requirements 19.15.25.10.
The operator shall mark the exact location of plugged and abandoned wells with a steel marker not less than four inches in diameter set in cement and extending at least four feet above mean ground level. The marker must include the below information:
 1. Operator name
 2. Lease name and well number
 3. API number
 4. Unit letter
 5. Section, Township and Range

- AGRICULTURE (Below grade markers)
In Agricultural areas a request can be made for a below ground marker. For a below ground marker the operator must file their request on a C-103 notice of intent, and it must include the following;
 - A) Aerial photo showing the agricultural area
 - B) Request from the landowner for the below ground marker.
 - C) Subsequent plugging report for a well using a below ground marker must have an updated C-102 signed by a certified surveyor for SHL.

Note: A below ground marker is required with all pertinent information mentioned above on a plate, set 3' below ground level, a picture of the plate will be supplied to OCD for record, the exact location of the marker (longitude and latitude by GPS) will be provided to OCD. OCD requires a current survey to verify the location of the below ground marker, however OCD will accept a GPS coordinate that were taken with a GPS that has an accuracy of within 15 feet.

18. If work has not commenced within 1 year of the approval of this procedure, the approval is automatically expired. After 1 year a new [C-103] NOI Plugging (C-103F) must be submitted and approved prior to work.

Figure A

North Formations to be isolated with cement plugs are:

- San Jose
- Nacimiento
- Ojo Alamo
- Kirtland
- Fruitland
- Picture Cliffs
- Chacra (if below the Chacra Line)
- Mesa Verde Group
- Mancos
- Gallup
- Basin Dakota (plugged at the top of the Graneros)
- Deeper formations will be reviewed on a case-by-case basis

Figure B

South (Artesia) Formations to be isolated with cement plugs are:

- Fusselman
- Montoya
- Devonian
- Morrow
- Strawn
- Atoka
- Permo-Penn
- Wolfcamp
- Bone Springs
- Delaware , in certain areas where the Delaware is subdivided into;
 - 1. Bell Canyon
 - 2. Cherry Canyon
 - 3. Brushy Canyon
- Any salt sections
- Abo
- Yeso
- Glorieta
- San Andres
- Greyburg
- Queen
- Yates

Figure C

Potash Area R-111-P

T 18S – R 30E

Sec 10 Unit P. Sec 11 Unit M,N. Sec 13 Unit L,M,N. Sec 14 Unit C -P. Sec 15 Unit A G,H,I,J,K,N,O,P. Sec 22 Unit All

except for M. Sec 23, Sec 24 Unit C,D,E,L, Sec 26 Unit A-G, Sec 27 Unit A,B,C

T 19S – R 29E

Sec 11 Unit P. Sec 12 Unit H-P. Sec 13. Sec 14 Unit A,B,F-P. Sec 15 Unit P. Sec 22 Unit A,B,C,F,G,H,I,J K,N,O,P. Sec 23.

Sec 24. Sec 25 Unit D. Sec 26 Unit A- F. Sec 27 Unit A,B,C,F,G,H.

T 19S – R 30E

Sec 2 Unit K,L,M,N. Sec 3 Unit I,L,M,N,O,P. Sec 4 Unit C,D,E,F,G,I-P. Sec 5 Unit A,B,C,E-P. Sec 6 Unit I,O,P. Sec 7 – Sec

10. Sec 11 Unit D, G—P. Sec 12 Unit A,B,E-P. Sec 13 Unit A-O. Sec 14-Sec 18. Sec 19 Unit A-L, P. Sec 20 – Sec 23. Sec

24 Unit C,D,E,F,L,M,N. Sec 25 Unit D. Sec 26 Unit A-G, I-P. Sec 27, Sec 28, Sec 29 Unit

A,B,C,D,F,G,H,I,J,O,P. Sec 32

Unit A,B,G,H,I,J,N,O,P. Sec 33. Sec 34. Sec 35. Sec 36 Unit D,E,F,I-P.

T 19S – R 31E

Sec 7 Unit C,D,E,F,L. Sec 18 Unit C,D,E,F,G,K,L. Sec 31 Unit M. Sec 34 Unit P. Sec 35 Unit M,N,O. Sec 36 Unit O,P.

T 20S – R 29E

Sec 1 Unit H,I,P. Sec 13 Unit E,L,M,N. Sec 14 Unit B-P. Sec 15 Unit A,H,I,J,N,O,P. Sec 22 Unit A,B,C,F,G,H,I,J,O,P. Sec

23. Sec 24 Unit C,D,E,F,G,J-P. Sec 25 Unit A-O. Sec 26. Sec 27 Unit A,B,G,H,I,J,O,P. Sec 34 Unit A,B,G,H.

Sec 35 Unit

A-H. Sec 36 Unit B-G.

T 20S – R 30E

Sec 1 – Sec 4. Sec 5 Unit A,B,C,E-P. Sec 6 Unit E,G-P. Sec 7 Unit A-H,I,J,O,P. Sec 8 – 17. Sec 18 Unit A,B,G,H,I,J,O,P.

Sec 19 Unit A,B,G,H,I,J,O,P. Sec 20 – 29. Sec 30 Unit A-L,N,O,P. Sec 31 Unit A,B,G,H,I,P. Sec 32 – Sec 36.

T 20S – R 31E

Sec 1 Unit A,B,C,E-P. Sec 2. Sec 3 Unit A,B,G,H,I,J,O,P. Sec 6 Unit D,E,F,J-P. Sec 7. Sec 8 Unit E-P. Sec 9 Unit E,F,J-P.

Sec 10 Unit A,B,G-P. Sec 11 – Sec 36.

T 21S – R 29E

Sec 1 – Sec 3. Sec 4 Unit L1 – L16,I,J,K,O,P. Sec 5 Unit L1. Sec 10 Unit A,B,H,P. Sec 11 – Sec 14. Sec 15 Unit A,H,I. Sec

23 Unit A,B. Sec 24 Unit A,B,C,D,F,G,H,I,J,O,P. Sec 25 Unit A,O,P. Sec 35 Unit G,H,I,J,K,N,O,P. Sec 36

A,B,C,F – P.

T 21S – R 30E

Sec 1 – Sec 36

T 21S – R 31E

Sec 1 – Sec 36

T 22S – R 28E

Sec 36 Unit A,H,I,P.

T 22S – R 29E

Sec 1. Sec2. Sec 3 Unit I,J,N,O,P. Sec 9 Unit G – P. Sec 10 – Sec 16. Sec 19 Unit H,I,J. Sec 20 – Sec 28. Sec 29 Unit

A,B,C,D,G,H,I,J,O,P. Sec 30 Unit A. Section 31 Unit C – P. Sec 32 – Sec 36

T 22S – R 30E

Sec 1 – Sec 36

T 22S – R 31E

Sec 1 – Sec 11. Sec 12 Unit B,C,D,E,F,L. Sec 13 Unit E,F,K,L,M,N. Sec 14 – Sec 23. Sec 24 Unit C,D,E,F,K,L,M,N. Sec 25

Unit A,B,C,D. Sec 26 Unit A,BC,D,G,H. Sec 27 – Sec 34.

T 23S – R 28E

Sec 1 Unit A

T 23S – R 29E

Sec 1 – Sec 5. Sec 6 Unit A – I, N,O,P. Sec 7 Unit A,B,C,G,H,I,P. Sec 8 Unit A – L, N,O,P. Sec 9 – Sec 16. Sec 17 Unit

A,B,G,H,I,P. Sec 21 – Sec 23. Sec 24 Unit A – N. Sec 25 Unit D,E,L. Sec 26. Sec 27. Sec 28 Unit A – J, N,O,P. Sec 33

Unit A,B,C. Sec 34 Unit A,B,C,D,F,G,H. Sec 35. Sec 36 Unit B,C,D,E,F,G,K,L.

T 23S – R 30E

Sec 1 – Sec 18. Sec 19 Unit A – I,N,O,P. Sec 20, Sec 21. Sec 22 Unit A – N, P. Sec 23, Sec 24, Sec 25. Sec 26 Unit

A,B,F-P. Sec 27 Unit C,D,E,I,N,O,P. Sec 28 Unit A – H, K,L,M,N. Sec 29 Unit A – J, O,P. Sec 30 Unit A,B. Sec 32 A,B. Sec

33 Unit C,D,H,I,O,P. Sec 34, Sec 35, Sec 36.

T 23S – R 31E

Sec 2 Unit D,E,J,O. Sec 3 – Sec 7. Sec 8 Unit A – G, K – N. Sec 9 Unit A,B,C,D. Sec 10 Unit D,P. Sec 11 Unit G,H,I,J,M,N,O,P. Sec 12 Unit E,L,K,M,N. Sec 13 Unit C,D,E,F,G,J,K,L,M,N,O. Sec 14. Sec 15 Unit A,B,E – P.

Sec 16 Unit

I, K – P. Sec 17 Unit B,C,D,E, I – P. Sec 18 – Sec 23. Sec 24 Unit B – G, K,L,M,N. Sec 25 Unit B – G, J,K,L. Sec 26 – Sec

34. Sec 35 Unit C,D,E.

T 24S – R 29E

Sec 2 Unit A, B, C, D. Sec 3 Unit A

T 24S – R 30E

Sec 1 Unit A – H, J – N. Sec 2, Sec 3. Sec 4 Unit A,B,F – K, M,N,O,P. Sec 9 Unit A – L. Sec 10 Unit A – L, O,P. Sec 11.

Sec 12 Unit D,E,L. Sec 14 Unit B – G. Sec 15 Unit A,B,G,H.

T 24S – R 31E

Sec 3 Unit B – G, J – O. Sec 4. Sec 5 Unit A – L, P. Sec 6 Unit A – L. Sec 9 Unit A – J, O, P. Sec 10 Unit B – G, K – N. Sec

35 Unit E – P. Sec 36 Unit E, K, L, M, N.

T 25S – R 31E

Sec 1 Unit C, D, E, F. Sec 2 Unit A – H.

Figure D1 and D2

South (Hobbs) Formations to be isolated with cement plugs are:

The plugging requirements in the Hobbs Area are based on the well location within specific areas of the Area (See Figure D1). The Formations in the Hobbs Area to be isolated with cement plugs are (see Figure D2)

Figure D1 Map

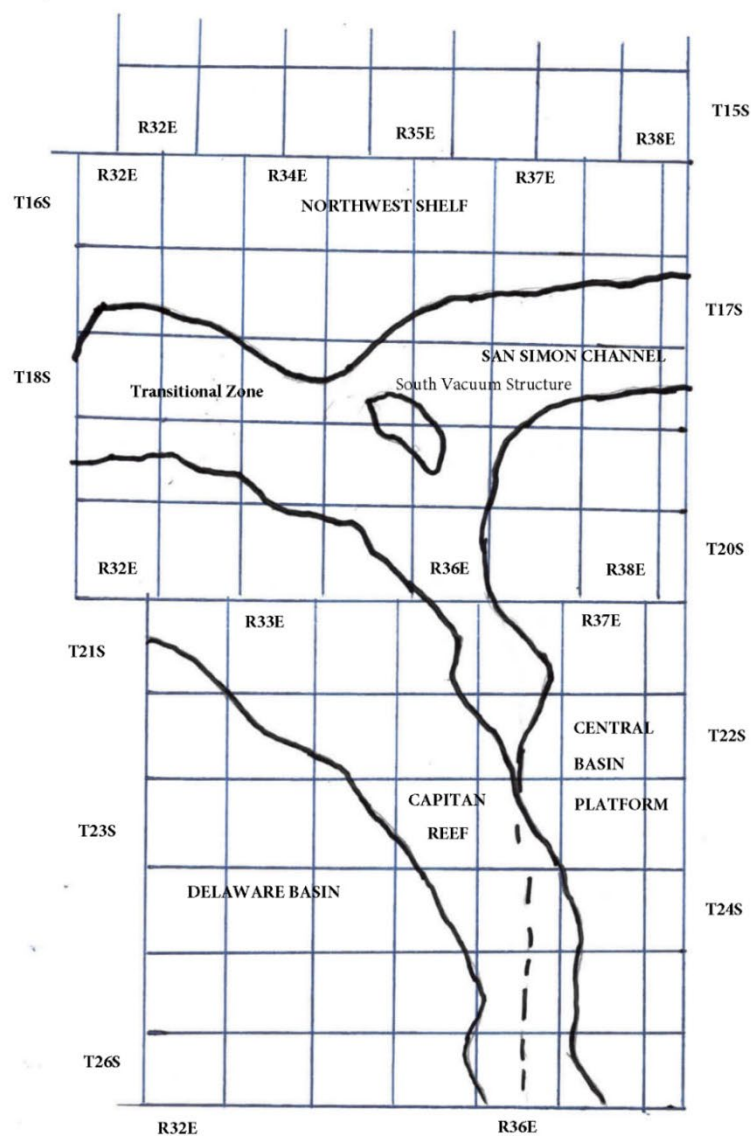


Figure D2 Formation Table

100' P'plug to isolate upper and lower fresh water zones (typiailly 2.50' to 350')						
NDIthwest Shelf	C;iptan Reef Area	Tranifition Zone	San Simon Oh.annel	South \lacJUUm Structure	Delaware Basin	Ce<n,tiral Basin Platform
Granit \.ash (Detrital basement material and fractured pre-Cambrian basement rock)	Siluro-Devonian	Morrow	Siluro-Devonian	Ellenburger	Siluro-Devonian	Granit \.ash (Detrital basement material, fractured pre-Cambrian basement rock and fracture Mafic Volcanic intrusives).
Montoya	Mississippian	Atoka	Morrow	Mckee	Morrow	Ellenburger
Fusselman	Morrow	Strawn	\.olfcamp	Siluro-Devonian	Atoka	Connell
Woodford	Atoka	Cisco	Abo Reef	Woodford	Strawn	Waddell
Siluro-Devonian	Strawn	Pennsylvanian	Bone Spring	Mississippian	Pennsylvanian	Mckee
Chester	Pennsylvanian	\.olfcamp	Delaware	Barnett Shale	Low er \.olfcamp	Simpson Group
Austin	\.olfcamp	Bone Spring	San Andres	Morrow	Upper \.olfcamp	Montoya
Mississippian	Abo Reef, if present	Delaware	Queen	Atoka	\.olfcamp	Fusselman
Morrow	Abo, if present	San Andres	Yates	Strawn	Third Bone Spring Sand (Top of \.olfbone)	Silurian
Atoka	Queen, if present	Grayburg-San Andres	Base of Salt	Canyon	First Bone Spring Sand (Top of Lower Bone Spring)	Devonian
Lower Pennsylvanian	Bone Spring	Queen	Rustler	Pennsylvanian	Bone Spring	Strawn
Cisco-Canyon	Delaware	Seven Rivers		Blinebry	Brushy Canyon	Pennsylvanian
Pennsylvanian	Base Capitan Reef	Yates		Bone Spring	Delaw are (Base of Salt)	\.olfcamp
Bough	Seven Rivers	Base of Salt		San Andres	Rustler	Abo
\.olfcamp	Yates	Rustler		Queen		Abo Reef
Abo	Top Capitan Reef			Base of Salt		Drinkard
Abo Reef, if present	Base of Salt			Rustler		Tubb
Yeso (Township 15 South to Township 17 South)	Rustler					Blinebry
Drinkard or Low er Yeso (Township 15 South to Township 17 South)						Paddock
Tubb (Township 15 South to Township 17 South)						Glorieta
Blinebry (Township 15 South to Township 17 South)						San Andres
Paddock (Township 15 South to Township 17 South)						Grayburg
Glorieta						Grayburg-San Andres
San Andres						Queen
Queen (Township 15 South to Township 17 South)						Seven Rivers
Seven Rivers (Township 15 South to Township 17 South)						Yates
Yates (Township 15 South to Township 17 South)						Base of Salt
Base of Salt						Rustler
Rustler						

Well Name: GALLEGOS CANYON UNIT	Well Location: T28N / R12W / SEC 32 / SESE / 36.61263 / -108.12692	County or Parish/State: SAN JUAN / NM
Well Number: 268	Type of Well: CONVENTIONAL GAS WELL	Allottee or Tribe Name:
Lease Number: NMSF079346	Unit or CA Name: GCU PC 89200844E	Unit or CA Number: NMNM78391A
US Well Number: 3004522239	Operator: SIMCOE LLC	

Notice of Intent

Sundry ID: 2889812

Type of Submission: Notice of Intent	Type of Action: Plug and Abandonment
Date Sundry Submitted: 01/08/2026	Time Sundry Submitted: 09:24
Date proposed operation will begin: 01/21/2026	

Procedure Description: SIMCOE proposes to P&A the GCU 268 (3004522239) as per the attached procedure. Due to time constraints and rig vendor availability, SIMCOE seeks permission to submit a reclamation plan at a later date.

Surface Disturbance

Is any additional surface disturbance proposed?: No

NOI Attachments

Procedure Description

GCU_268_NOI_Package_20260108092319.pdf

Well Name: GALLEGOS CANYON UNIT	Well Location: T28N / R12W / SEC 32 / SESE / 36.61263 / -108.12692	County or Parish/State: SAN JUAN / NM
Well Number: 268	Type of Well: CONVENTIONAL GAS WELL	Allottee or Tribe Name:
Lease Number: NMSF079346	Unit or CA Name: GCU PC 89200844E	Unit or CA Number: NMNM78391A
US Well Number: 3004522239	Operator: SIMCOE LLC	

Conditions of Approval

Specialist Review

2889812_268_300452239_NOIA_KR_01122026_20260112084253.pdf
GCU_268_Geo_KR_20260112084253.pdf
General_Requirement_PxA_20260112084237.pdf

Operator

I certify that the foregoing is true and correct. Title 18 U.S.C. Section 1001 and Title 43 U.S.C. Section 1212, make it a crime for any person knowingly and willfully to make to any department or agency of the United States any false, fictitious or fraudulent statements or representations as to any matter within its jurisdiction. Electronic submission of Sundry Notices through this system satisfies regulations requiring a

Operator Electronic Signature: CHRISTY KOST	Signed on: JAN 08, 2026 09:27 AM
Name: SIMCOE LLC	
Title: Permitting Agent	
Street Address: 1199 MAIN AVE STE 101	
City: DURANGO	State: CO
Phone: (405) 905-8672	
Email address: CHRISTY.KOST@MACHNR.COM	

Field

Representative Name:		
Street Address:		
City:	State:	Zip:
Phone:		
Email address:		

BLM Point of Contact

BLM POC Name: KENNETH G RENNICK	BLM POC Title: Petroleum Engineer
BLM POC Phone: 5055647742	BLM POC Email Address: krennick@blm.gov
Disposition: Approved	Disposition Date: 01/12/2026
Signature: Kenneth Rennick	

Form 3160-5
(October 2024)

UNITED STATES
DEPARTMENT OF THE INTERIOR
BUREAU OF LAND MANAGEMENT

FORM APPROVED
OMB No. 1004-0220
Expires: October 31, 2027

SUNDRY NOTICES AND REPORTS ON WELLS
Do not use this form for proposals to drill or to re-enter an
abandoned well. Use Form 3160-3 (APD) for such proposals.

5. Lease Serial No.	
6. If Indian, Allottee or Tribe Name	
7. If Unit of CA/Agreement, Name and/or No.	
8. Well Name and No.	
9. API Well No.	
10. Field and Pool or Exploratory Area	
11. Country or Parish, State	

SUBMIT IN TRIPLICATE - Other instructions on page 2

1. Type of Well		
<input type="checkbox"/> Oil Well	<input type="checkbox"/> Gas Well	<input type="checkbox"/> Other
2. Name of Operator		
3a. Address	3b. Phone No. (include area code)	
4. Location of Well (Footage, Sec., T.,R.,M., or Survey Description)		

12. CHECK THE APPROPRIATE BOX(ES) TO INDICATE NATURE OF NOTICE, REPORT OR OTHER DATA

TYPE OF SUBMISSION	TYPE OF ACTION				
<input type="checkbox"/> Notice of Intent	<input type="checkbox"/> Acidize	<input type="checkbox"/> Deepen	<input type="checkbox"/> Production (Start/Resume)	<input type="checkbox"/> Water Shut-Off	
<input type="checkbox"/> Subsequent Report	<input type="checkbox"/> Alter Casing	<input type="checkbox"/> Hydraulic Fracturing	<input type="checkbox"/> Reclamation	<input type="checkbox"/> Well Integrity	
<input type="checkbox"/> Final Abandonment Notice	<input type="checkbox"/> Casing Repair	<input type="checkbox"/> New Construction	<input type="checkbox"/> Recomplete	<input type="checkbox"/> Other	
	<input type="checkbox"/> Change Plans	<input type="checkbox"/> Plug and Abandon	<input type="checkbox"/> Temporarily Abandon		
	<input type="checkbox"/> Convert to Injection	<input type="checkbox"/> Plug Back	<input type="checkbox"/> Water Disposal		

13. Describe Proposed or Completed Operation: Clearly state all pertinent details, including estimated starting date of any proposed work and approximate duration thereof. If the proposal is to deepen directionally or recompleate horizontally, give subsurface locations and measured and true vertical depths of all pertinent markers and zones. Attach the Bond under which the work will be perfonned or provide the Bond No. on file with BLM/BIA. Required subsequent reports must be filed within 30 days following completion of the involved operations. If the operation results in a multiple completion or recompletion in a new interval, a Form 3160-4 must be filed once testing has been completed. Final Abandonment Notices must be filed only after all requirements, including reclamation, have been completed and the operator has detennined that the site is ready for final inspection.)

14. I hereby certify that the foregoing is true and correct. Name (Printed/Typed)	Title
Signature	Date

THE SPACE FOR FEDERAL OR STATE OFFICE USE

Approved by	Title	Date
Conditions of approval, if any, are attached. Approval of this notice does not warrant or certify that the applicant holds legal or equitable title to those rights in the subject lease which would entitle the applicant to conduct operations thereon.	Office	

Title 18 U.S.C Section 1001 and Title 43 U.S.C Section 1212, make it a crime for any person knowingly and willfully to make to any department or agency of the United States any false, fictitious or fraudulent statements or representations as to any matter within its jurisdiction.

(Instructions on page 2)

GENERAL INSTRUCTIONS

This form is designed for submitting proposals to perform certain well operations and reports of such operations when completed as indicated on Federal and Indian lands pursuant to applicable Federal law and regulations. Any necessary special instructions concerning the use of this form and the number of copies to be submitted, particularly with regard to local area or regional procedures and practices, are either shown below, will be issued by or may be obtained from the local Federal office.

SPECIFIC INSTRUCTIONS

Item 4 - Locations on Federal or Indian land should be described in accordance with Federal requirements. Consult the local Federal office for specific instructions.

Item 13: Proposals to abandon a well and subsequent reports of abandonment should include such special information as is required by the local Federal office. In addition, such proposals and reports should include reasons for the abandonment; data on any former or present productive zones or other zones with present significant fluid contents not sealed off by cement or otherwise; depths (top and bottom) and method of placement of cement plugs; mud or other material placed below, between and above plugs; amount, size, method of parting of any casing, liner or tubing pulled and the depth to the top of any tubing left in the hole; method of closing top of well and date well site conditioned for final inspection looking for approval of the abandonment. If the proposal will involve **hydraulic fracturing operations**, you must comply with 43 CFR 3162.3-3, including providing information about the protection of usable water. Operators should provide the best available information about all formations containing water and their depths. This information could include data and interpretation of resistivity logs run on nearby wells. Information may also be obtained from state or tribal regulatory agencies and from local BLM offices.

NOTICES

The privacy Act of 1974 and the regulation in 43 CFR 2.48(d) provide that you be furnished the following information in connection with information required by this application.

AUTHORITY: 30 U.S.C. 181 et seq., 351 et seq., 25 U.S.C. 396; 43 CFR 3160.

PRINCIPAL PURPOSE: The information is used to: (1) Evaluate, when appropriate, approve applications, and report completion of subsequent well operations, on a Federal or Indian lease; and (2) document for administrative use, information for the management, disposal and use of National Resource lands and resources, such as: (a) evaluating the equipment and procedures to be used during a proposed subsequent well operation and reviewing the completed well operations for compliance with the approved plan; (b) requesting and granting approval to perform those actions covered by 43 CFR 3162.3-2, 3162.3-3, and 3162.3-4; (c) reporting the beginning or resumption of production, as required by 43 CFR 3162.4-1(c) and (d) analyzing future applications to drill or modify operations in light of data obtained and methods used.

ROUTINE USES: Information from the record and/or the record will be transferred to appropriate Federal, State, local or foreign agencies, when relevant to civil, criminal or regulatory investigations or prosecutions in connection with congressional inquiries or to consumer reporting agencies to facilitate collection of debts owed the Government.

EFFECT OF NOT PROVIDING THE INFORMATION: Filing of this notice and report and disclosure of the information is mandatory for those subsequent well operations specified in 43 CFR 3162.3-2, 3162.3-3, 3162.3-4.

The Paperwork Reduction Act of 1995 requires us to inform you that:

The BLM collects this information to evaluate proposed and/or completed subsequent well operations on Federal or Indian oil and gas leases.

Response to this request is mandatory.

The BLM would like you to know that you do not have to respond to this or any other Federal agency-sponsored information collection unless it displays a currently valid OMB control number.

BURDEN HOURS STATEMENT: Public reporting burden for this form is estimated to average 8 hours per response, including the time for reviewing instructions, gathering and maintaining data, and completing and reviewing the form. Direct comments regarding the burden estimate or any other aspect of this form to U.S. Department of the Interior, Bureau of Land Management (1004-0137), Bureau Information Collection Clearance Officer (WO-630), 1849 C St., N.W., Mail Stop 401 LS, Washington, D.C. 20240

Additional Information

Location of Well

0. SHL: SESE / 430 FSL / 430 FEL / TWSP: 28N / RANGE: 12W / SECTION: 32 / LAT: 36.61263 / LONG: -108.12692 (TVD: 0 feet, MD: 0 feet)

BHL: SESE / 430 FSL / 430 FEL / TWSP: 28N / SECTION: / LAT: 36.61263 / LONG: 108.12692 (TVD: 0 feet, MD: 0 feet)

GALLEGOS CANYON UNIT #268

3004522239

430 FSL 430 FEL P-32-28N-12W

SAN JUAN COUNTY, NM

OBJECTIVE: Permanently plug and abandon the GCU 268. All cement volumes use 100% excess outside casing and 50' excess inside pipe. Stabilizing wellbore fluid will be 8.3 ppg, sufficient to balance all exposure formation pressures. All cement will be ASTM Class G neat yield or equivalent. If casing pressure tests, tagging plugs will not be required. Prior to rig, notify NMOCD and BLM, and see attached COAs.

1. MIRU. Check casing, tubing, and BH pressures and report daily.
2. Remove existing piping on casing valve. RU blow lines and blow down pressure. Kill well as necessary.
3. POOH pump/rods.
4. ND WH, NU BOP.
5. POOH tubing.
6. Set CIBP at 1256'.
7. Load wellbore and pressure test casing to 500 psi.
8. RU WL, run CBL from top of CIBP at 1256' to surface.
9. **PICTURED CLIFFS AND FRUITLAND PLUG** – RIH and spot 28 sx Class G cement from 1256'-950'.
10. POOH tubing.
11. **KIRTLAND, OJO ALAMO, and SURFACE PLUG** – Pump 100 sx Class G cement down tubing and up casing from 200' to surface. POOH tubing.
12. ND BOPE, cut off wellhead below surface casing flange per regulation. Top off w/ cement if needed. Install below grade P&A marker w/ cement to comply w/ regulations. RDMO

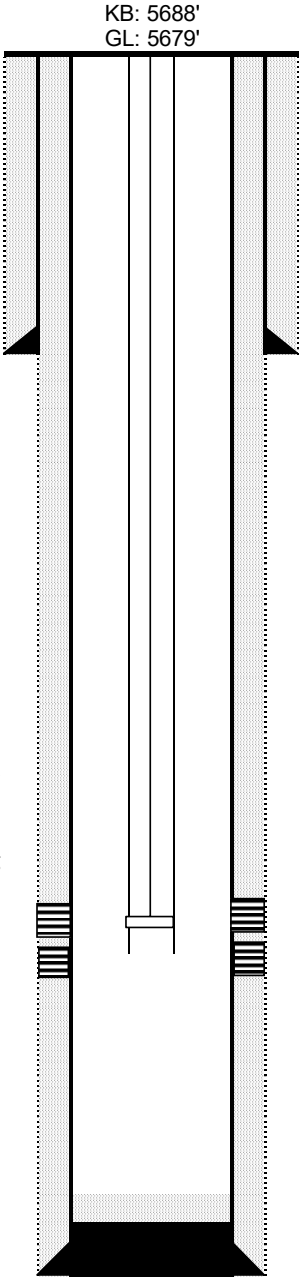
GCU 268 PC
Pictured Cliffs
API# 30-045-22239
Unit P - Sec 32 - T28N - R12W
San Juan County, New Mexico

Formation Tops

Ojo Alamo 50'
Kirtland 150'
Fruitland 1000'
Pictured Cliffs 1285'

3/4" Rods
2x1.25x9 RHAC

2-3/8" Tubing
1.875" XN Nipple @ 1324'
1.78" F Nipple @ 1329'
EOT @ 1347'



9-7/8" Hole
7", 23#, K-55 @ 90'
Cmt w/ 60 sx Class A w/ 3% CaCl2
Circulated to surface

PC Perforations
1306'-1320' w/ 4 spf
1320'-1330' w/ 1 spf
1363'-1367' w/ 1 spf
1372'-1378' w/ 1 spf

Frac'd w/ 10,000 gal foam
carrying 10,500 lbs 20/40

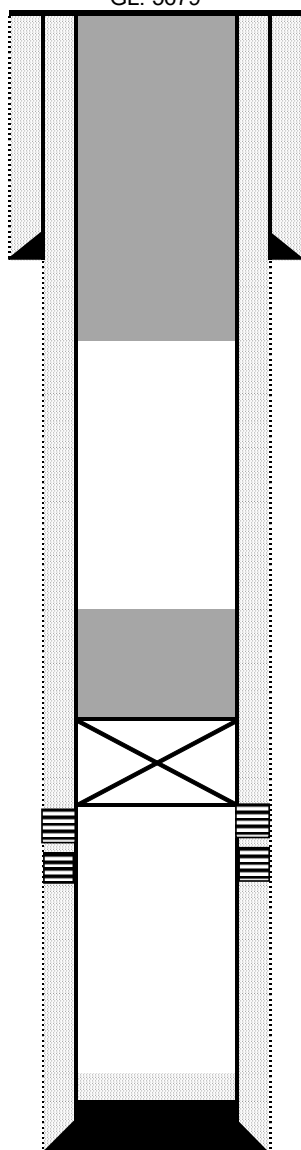
6-1/4" hole
4-1/2" 10.5#, J-55 @ 1442'
Cmt with 110 sx Class A
Circulated to surface

PBTD: 1353'
TD: 1443'

KB: 5688'
GL: 5679'

Pictured Cliffs
API# 30-045-22239
Unit P - Sec 32 - T28N - R12W
San Juan County, New Mexico

Ojo Alamo	50'
Kirtland	150'
Fruitland	1000'
Pictured Cliffs	1285'



9-7/8" Hole
7", 23#, K-55 @ 90'
Cmt w/ 60 sx Class A w/ 3% CaCl2
Circulated to surface

Plug 2 - Surface, Ojo, Kirtland
100 sx Class G
0-200'

Plug 1 - Fruitland and PC
28 sx Class G
950-1256'

PC Perforations

1306'-1320' w/ 4 spf
1320'-1330' w/ 1 spf
1363'-1367' w/ 1 spf
1372'-1378' w/ 1 spf

Frac'd w/ 10,000 gal foam
carrying 10,500 lbs 20/40

6-1/4" hole
4-1/2" 10.5#, J-55 @ 1442'
Cmt with 110 sx Class A
Circulated to surface

PBTD: 1353'
TD: 1443'



United States Department of the Interior

BUREAU OF LAND MANAGEMENT
Farmington District Office
6251 College Boulevard, Suite A
Farmington, New Mexico 87402
<http://www.blm.gov/nm>



CONDITIONS OF APPROVAL

January 12, 2026

Notice of Intent – Plug and Abandonment

Operator: SIMCOE LLC
Lease: NMSF 0079346
Agreement: NMNM 078391A
Well(s): Gallegos Canyon Unit 268 (US Well No. 30-045-22239)
Sundry Notice ID #: 2889812

The Notice of Intent to Plug and Abandon is accepted with the following Conditions of Approval (COA):

1. Plugging operations authorized are subject to the attached "General Requirements for Permanent Abandonment of Wells on Federal and Indian Lease."
2. The following modifications to your plugging program are to be made:
 - a. No changes to the procedure.
3. **Notification:** Farmington Office is to be notified at least 24 hours before the plugging operations commence at (505) 564 7750.

You are also required to place cement excesses per 4.2 and 4.4 of the attached General Requirements.

K Rennick 01/12/2026

BLM - FFO - Geologic Report

Date Completed 1/12/2026

Well No. Gallegos Canyon Unit 268
US Well No. 30-045-22239
Lease No. NMSF 0079346
Agreement No. NMNM 078391A
Operator SIMCOE LLC Formation Kutz Pictured Cliffs, West

Geologic Formations	Est. tops	Remarks
Ojo Alamo	50	
Surface Casing	90	
Kirtland	150	
Fruitland Fm	1000	
Pictured Cliffs	1285	
Top Perforation	1306	
Bottom	1378	

Remarks:

Reference Well:

Operator selected formation tops appropriate for the area. No changes to the procedure.

NA

Prepared by: Kenneth Rennick

**GENERAL REQUIREMENTS FOR
PERMANENT ABANDONMENT OF WELLS ON FEDERAL AND INDIAN LEASES
FARMINGTON FIELD OFFICE**

1.0 The approved plugging plans may contain variances from the following minimum general requirements.

1.1 Modification of the approved plugging procedure is allowed only with the prior approval of the Authorized Officer, Farmington Field Office.

1.2 Requirements may be added to address specific well conditions.

2.0 Materials used must be accurately measured. (densometer/scales)

3.0 A tank or lined pit must be used for containment of any fluids from the wellbore during plugging operations and all pits are to be fenced with woven wire. These pits will be fenced on three sides and once the rig leaves location, the fourth side will be fenced.

3.1 Pits are not to be used for disposal of any hydrocarbons. If hydrocarbons are present in the pit, the fluids must be removed prior to filling in.

4.0 All cement plugs are to be placed through a work string. Cement may be bull-headed down the casing with prior approval. Cement caps on top of bridge plugs or cement retainers may be placed by dump bailer.

4.1 The cement shall be as specified in the approved plugging plan.

4.2 All cement plugs placed inside casing shall have sufficient volume to fill a minimum of 100' of the casing, or annular void(s) between casings, plus an excess volume sufficient to provide for 50 linear feet of fill above the plug.

4.3 Surface plugs may be no less than 50' in length.

4.4 All cement plugs placed to fill annular void(s) between casing and the formation shall be of sufficient volume to fill a minimum of 100' of the annular space plus 100% excess, calculated using the bit size, or 100' of annular capacity, determined from a caliper log, plus an excess volume sufficient to provide for 50 linear feet of fill above the plug.

4.5 All cement plugs placed to fill an open hole shall be of sufficient volume to fill a minimum of 100' of hole, as calculated from a caliper log, plus an excess volume sufficient to provide for 50 linear feet of fill above the plug. In the absence of a caliper log, an excess of 100% shall be required.

4.6 A cement bond log or other accepted cement evaluation tool is required to be run if one had not been previously ran or cement did not circulate to surface during the original casing cementing job or subsequent cementing jobs.

5.0 All cement plugs spotted across, or above, any exposed zone(s), when; the wellbore is not full of fluid or the fluid level will not remain static, and in the case of lost circulation or partial returns during cement placement, shall be tested by tagging with the work string.

- 5.1 The top of any cement plug verified by tagging must be at or above the depth specified in the approved plan, without regard to any excess.
- 5.2 Testing will not be required for any cement plug that is mechanically contained by use of a bridge plug and/or cement retainer, if casing integrity has been established.
- 5.3 Any cement plug which is the only isolating medium, for a fresh water interval or a zone containing a prospectively valuable deposit of minerals, shall be tested by tagging.
- 5.4 If perforations are required below the surface casing shoe, a 30 minute minimum wait time will be required to determine if gas and/or water flows are present. If flow is present, the well will be shut-in for a minimum of one hour and the pressure recorded. Short or long term venting may be necessary to evacuate trapped gas. **If only a water flow occurs with no associated gas, shut well in and record the pressures. Contact the Engineer as it may be necessary to change the cement weight and additives.**

6.0 Before setting any cement plugs the hole needs to be rolled. All wells are to be controlled by means of a fluid that is to be of a weight and consistency necessary to stabilize the wellbore. This fluid shall be left in place as filler between all plugs.

- 6.1 Drilling mud may be used as the wellbore fluid in open hole plugging operations.
- 6.2 The wellbore fluid used in cased holes shall be of sufficient weight to balance known pore pressures in all exposed formations.

7.0 A blowout preventer and related equipment (BOPE) shall be installed and tested prior to working in a wellbore with any exposed zone(s); (1) that are over pressured, (2) where the pressures are unknown, or (3) known to contain H₂S.

8.0 Within 30 days after plugging work is completed, file a Sundry Notice, Subsequent Report of Abandonment (Form 3160-5), through the Automated Fluid Minerals Support System (AFMSS) with the Field Manager, Bureau of Land Management, 6251 College Blvd., Suite A, Farmington, NM 87402. The report should show the manner in which the plugging work was carried out, the extent, by depth(s), of cement plugs placed, and the size and location, by depth(s), of casing left in the well. Show date well was plugged.

9.0 All permanently abandoned wells are to be marked with a permanent monument as specified in 43 CFR 3162.6(d). Unless otherwise approved.

10.0 If this well is located in a Specially Designated Area (SDA), compliance with the appropriate seasonal closure requirements will be necessary.

All of the above are minimum requirements. Failure to comply with the above conditions of approval may result in an assessment for noncompliance and/or a Shut-in Order being issued pursuant to 43 CFR 3163.1. You are further advised that any instructions, orders or decisions issued by the Bureau of Land Management are subject to administrative review pursuant to 43 CFR 3165.3 and appeal pursuant to 43 CFR 3165.4 and 43 CFR 4.700.

Sante Fe Main Office
Phone: (505) 476-3441

General Information
Phone: (505) 629-6116

Online Phone Directory
<https://www.emnrd.nm.gov/ocd/contact-us>

State of New Mexico
Energy, Minerals and Natural Resources
Oil Conservation Division
1220 S. St Francis Dr.
Santa Fe, NM 87505

CONDITIONS

Action 542035

CONDITIONS

Operator: SIMCOE LLC 1199 Main Ave., Suite 101 Durango, CO 81301	OGRID: 329736
	Action Number: 542035
	Action Type: [C-103] NOI Plug & Abandon (C-103F)

CONDITIONS

Created By	Condition	Condition Date
loren.diede	Notify the OCD inspection supervisor via email 24 hours prior to beginning Plug & Abandon (P&A) operations.	1/14/2026
loren.diede	Submit photo and GPS coordinates of the P&A marker with the C-103P subsequent P&A report. The API# on the P&A marker must be clearly legible in the P&A marker photos.	1/14/2026