

Submit a Copy To Appropriate District

Office

District I – (575) 393-6161
1625 N. French Dr., Hobbs, NM 88240
District II – (575) 748-1283
811 S. First St., Artesia, NM 88210
District III – (505) 334-6178
1000 Rio Brazos Rd., Aztec, NM 87410
District IV – (505) 476-3460
1220 S. St. Francis Dr., Santa Fe, NM
87505

State of New Mexico
Energy, Minerals and Natural Resources

OIL CONSERVATION DIVISION
1220 South St. Francis Dr.
Santa Fe, NM 87505

Form C-103
Revised July 18, 2013

WELL API NO. 30-015-33999	
5. Indicate Type of Lease STATE <input checked="" type="checkbox"/> FEE <input type="checkbox"/>	
6. State Oil & Gas Lease No.	
7. Lease Name or Unit Agreement Name COHIBA BPY STATE	
8. Well Number 1	
9. OGRID Number 7377	
10. Pool name or Wildcat SALT DRAW; MORROW, WEST(GAS)	
SUNDRY NOTICES AND REPORTS ON WELLS (DO NOT USE THIS FORM FOR PROPOSALS TO DRILL OR TO DEEPEN OR PLUG BACK TO A DIFFERENT RESERVOIR. USE "APPLICATION FOR PERMIT" (FORM C-101) FOR SUCH PROPOSALS.)	
1. Type of Well: Oil Well <input type="checkbox"/> Gas Well <input checked="" type="checkbox"/> Other	
2. Name of Operator EOG RESOURCES, INC	
3. Address of Operator P.O. Box 2267, Midland, TX 79706	
4. Well Location Unit Letter D : 660 feet from the NORTH line and 660 feet from the WEST line Section 1 Township 25S Range 27E NMPM EDDY County	
11. Elevation (Show whether DR, RKB, RT, GR, etc.) 3144'	

12. Check Appropriate Box to Indicate Nature of Notice, Report or Other Data

NOTICE OF INTENTION TO:

PERFORM REMEDIAL WORK ☐ PLUG AND ABANDON ☐
TEMPORARILY ABANDON ☐ CHANGE PLANS ☐
PULL OR ALTER CASING ☐ MULTIPLE COMPL ☐
DOWNHOLE COMMINGLE ☐
CLOSED-LOOP SYSTEM ☐
OTHER: ☐

SUBSEQUENT REPORT OF:

REMEDIAL WORK ☐ ALTERING CASING ☐
COMMENCE DRILLING OPNS. ☐ P AND A ☒
CASING/CEMENT JOB ☐
OTHER: ☐

13. Describe proposed or completed operations. (Clearly state all pertinent details, and give pertinent dates, including estimated date of starting any proposed work). SEE RULE 19.15.7.14 NMAC. For Multiple Completions: Attach wellbore diagram of proposed completion or recompletion.

EOG PLUGGED THIS WELL ON 10/13/2025 USING THE ATTACHED PROCEDURE. FINAL WBD ATTACHED

Spud Date:

5/11/1998

Rig Release Date:

I hereby certify that the information above is true and complete to the best of my knowledge and belief.

SIGNATURE Kristina Agee TITLE REGULATORY SPECIALIST DATE 1/12/2026

Type or print name Kristina Agee E-mail address: kristina_agee@eogresources.com PHONE: 432-686-6996

For State Use Only

APPROVED BY: _____ TITLE _____ DATE _____

Conditions of Approval (if any):

Cohiba BPY State #1 – P&A Operations Report

API# 300153399900

4/22/25

MIRU

Kill well. Release packer. TOO H 394 jts of 2-3/8 tbg and packer.

4/23/25

PU 3.75" GR, RIH to 12,260' clean.

PU 3.5" CIBP , set @ 12,244'. Pressure test to 500 psi, good test.

RDMO.

10/3/25

Pressure test casing to 560 psi, held pressure for 30 min with good bubble test.

RIH GR/JB to 12,218' and tag CIBP.

RIH CBL and log from 12,218' to surface. Est. TOC @ 9150'.

10/6/25

PU and RIH with 2-3/8" WS, tag CIBP @ 12,203. Notify and approved tag by OCD.

10/7/25

PLUG #1: Spot 25 sxs class H. WOC 4 hours. Tag @ 11,867'. OCD approved tag.

TOOH, EOT @ 11,614'.

PLUG #2: Spot 25 sxs class H from 11,614' to 11,270'.

TOOH, EOT @ 9366'.

PLUG #3: Spot 34 sxs class H from 9,366' to 9,106'.

10/8/25

RIH and tag cement at 8,710'. Robert with OCD approved tag.

POOH with WS, PU 4-1/2 AD-1 packer and RIH. EOT @ 5,512'.

RU e-line and RIH to 6,106' and perf. Tried to inject @ 550 psi and not able to. Drop down 20 jts with EOT @ 6,179'. Establish circulation in prod casing.

PLUG #4: Spot 25 sxs class C, calculated top 5,791'. WOC.

10/9/25

RIH and tag plug 4 @ 5,702'. OCD approved tag.

POOH and EOT @ 3,438'. RU e-line and perf @ 3,852'. Set packer @ 2,912'. Establish circulation @ 2 bpm @ 400 psi. Notify OCD and begin next squeeze plug.

PLUG #5: Squeeze 25 sxs class C through 3,852' perms.

WOC and tag @ 3,841'. Notify OCD and instructed to pump 25 sxs spot and move up hole.

PLUG #6: Spot 25 sxs class C. Calculated top is 3,462'.

POOH and EOT @ 1,890'. Perf @ 2,485'. Set packer @ 1,364'. Established circulation at 2 bpm @ 450 psi.

PLUG #7: Squeeze 56 sxs class C. SI tubing with 500 psi.

SDFN WOC.

10/10/25

Tag plug 7 @ 2,163'. Notify OCD and told to spot 25 sxs on top.

PLUG #8: Spot 25 sxs class C from 2,163' to 1,783'.

POOH and LD tubing. MU gun and RIH perf @ 655'.

Load prod casing and close blinds, pump and confirm good circulation up SCSG and ICSG.

PLUG #9: Circulate 200 sxs class C to surface on intermediate and surface casing. Top out Prod casing.

SD for weekend.

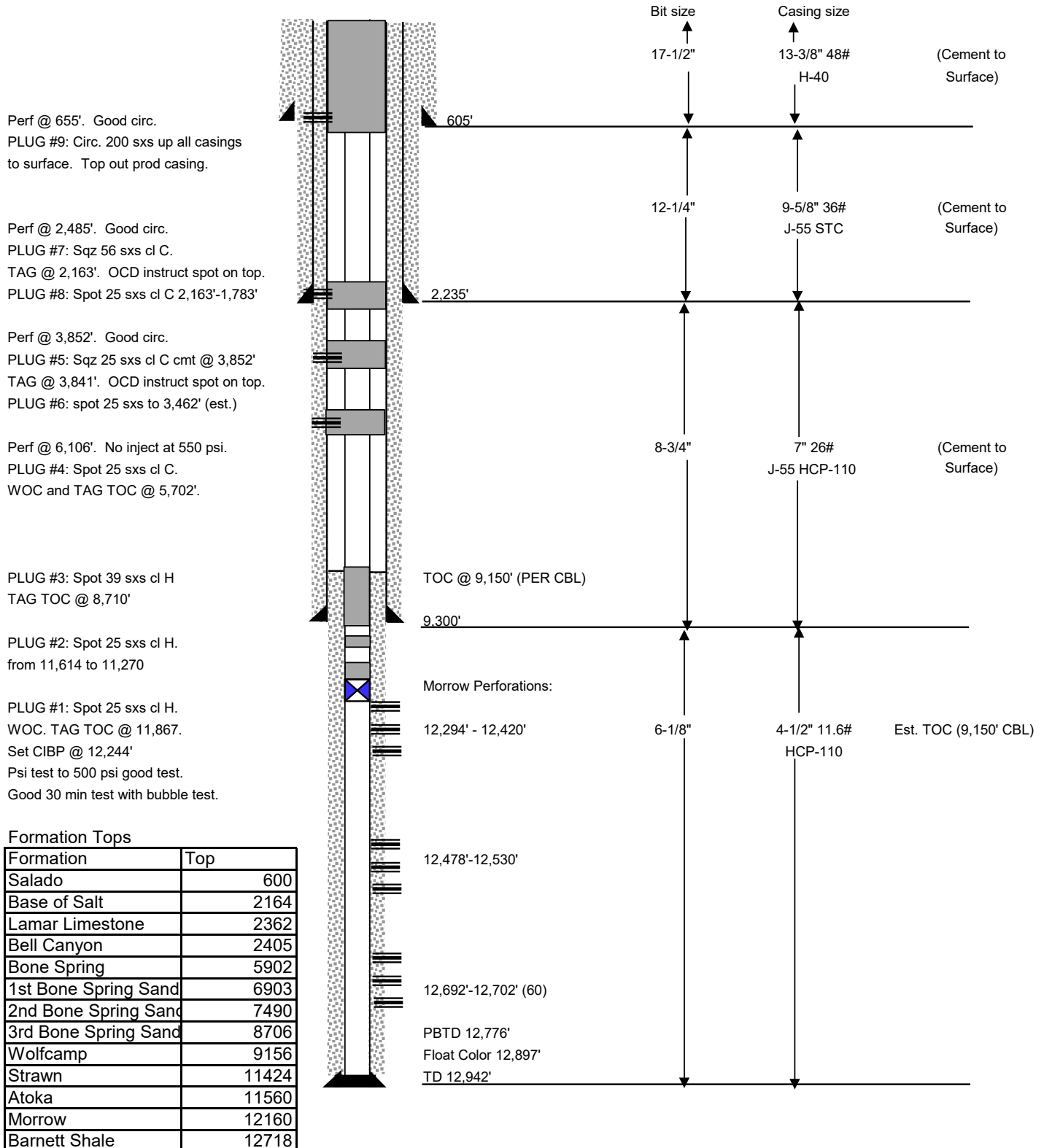
10/13/25

Cut off 7" and 4.5" casing. Top off cement and stalled solo tube and 4" marker pipe. Cut off anchors. Backfill around wellhead and anchor locations.



Cohiba BPY State Com #1 Post P&A Ops - Wellbore Diagram

660' FNL, 660' FWL
Section 1, T25S, R27E
Eddy County, New Mexico
API No. 30-015-33999



12/2/2025

Sante Fe Main Office
Phone: (505) 476-3441

General Information
Phone: (505) 629-6116

Online Phone Directory
<https://www.emnrd.nm.gov/oed/contact-us>

State of New Mexico
Energy, Minerals and Natural Resources
Oil Conservation Division
1220 S. St Francis Dr.
Santa Fe, NM 87505

CONDITIONS

Action 545259

CONDITIONS

Operator: EOG RESOURCES INC 5509 Champions Drive Midland, TX 79706	OGRID: 7377
	Action Number: 545259
	Action Type: [C-103] Sub. Plugging (C-103P)

CONDITIONS

Created By	Condition	Condition Date
gcordero	Clean Location in accordance with 19.15.25.10 NMAC.	1/23/2026
gcordero	Submit C-103Q within one year of plugging.	1/23/2026