

Santa Fe Main Office  
Phone: (505) 476-3441  
General Information  
Phone: (505) 629-6116

State of New Mexico  
Energy, Minerals and Natural Resources

Form C-103  
Revised July 18, 2013

Online Phone Directory Visit:  
<https://www.emnrd.nm.gov/ocd/contact-us/>

OIL CONSERVATION DIVISION  
1220 South St. Francis Dr.  
Santa Fe, NM 87505

<b>SUNDRY NOTICES AND REPORTS ON WELLS</b> (DO NOT USE THIS FORM FOR PROPOSALS TO DRILL OR TO DEEPEN OR PLUG BACK TO A DIFFERENT RESERVOIR. USE "APPLICATION FOR PERMIT" (FORM C-101) FOR SUCH PROPOSALS.) 1. Type of Well: Oil Well <input checked="" type="checkbox"/> Gas Well <input type="checkbox"/> Other <input type="checkbox"/>		WELL API NO. 30-025-00037
2. Name of Operator Jay Mangement Company, LLC		5. Indicate Type of Lease STATE <input checked="" type="checkbox"/> FEE <input type="checkbox"/>
3. Address of Operator 2401 Fountain View Drive, Suite 420, Houston, TX 77057		6. State Oil & Gas Lease No.
4. Well Location Unit Letter <u>B</u> : <u>319</u> feet from the <u>North</u> line and <u>2341</u> feet from the <u>East</u> line Section <u>27</u> Township <u>10 S</u> Range <u>32 E</u> NMPM County <u>Lea</u>		7. Lease Name or Unit Agreement Name New Mexico B State
11. Elevation (Show whether DR, RKB, RT, GR, etc.)		8. Well Number <u>3</u>
9. OGRID Number 247692		10. Pool name or Wildcat Mescalero Permo Penn

12. Check Appropriate Box to Indicate Nature of Notice, Report or Other Data

<b>NOTICE OF INTENTION TO:</b> PERFORM REMEDIAL WORK <input type="checkbox"/> PLUG AND ABANDON <input type="checkbox"/> TEMPORARILY ABANDON <input type="checkbox"/> CHANGE PLANS <input type="checkbox"/> PULL OR ALTER CASING <input type="checkbox"/> MULTIPLE COMPL <input type="checkbox"/> DOWNHOLE COMMINGLE <input type="checkbox"/> CLOSED-LOOP SYSTEM <input type="checkbox"/> OTHER: <input type="checkbox"/>		<b>SUBSEQUENT REPORT OF:</b> REMEDIAL WORK <input type="checkbox"/> ALTERING CASING <input type="checkbox"/> COMMENCE DRILLING OPNS. <input type="checkbox"/> P AND A <input checked="" type="checkbox"/> CASING/CEMENT JOB <input type="checkbox"/> OTHER: <input type="checkbox"/>	
--	--	--	--

13. Describe proposed or completed operations. (Clearly state all pertinent details, and give pertinent dates, including estimated date of starting any proposed work). SEE RULE 19.15.7.14 NMAC. For Multiple Completions: Attach wellbore diagram of proposed completion or recompletion.

See attached:

Spud Date:

09/02/2025

Rig Release Date:

09/12/2025

I hereby certify that the information above is true and complete to the best of my knowledge and belief.

SIGNATURE  TITLE Agent DATE 01/27/2026

Type or print name Quang Truong E-mail address: qtram@jaymgt.com PHONE: 713-621-6785

**For State Use Only**

APPROVED BY: \_\_\_\_\_ TITLE \_\_\_\_\_ DATE \_\_\_\_\_

Conditions of Approval (if any):

RIG 123

NM B #3 – JAY MANAGEMENT – START 9.2.25 LEA CTY NM

FINISH 9.12.25

API# 30-025-00037

9.2.25

DROVE TO LOCATION

SPOT BASE BEAM AND RIG #123

CHK WELL PRESSURE '0' PSI

DIG 3' FT IN SELLER INSTALL 2" SURFACE VALVE REMOVE TBG HEAD CAP POOH LD 3" JNT CK ID IN CASING NOT 5.5 CSG IT'S 7 5/8 ND TBG HEAD CHECK PRODUCTION CSG CONFIRM SIZE 7 5/8 INSTAL CSG HEAD BACK

TRAVEL

9.3.25

DROVE TO LOCATION

HOLD TGSM

RU AAA WIRELINE RIH W/6.1 GAGE RING TAG @ 4300' COULDN'T GO PASS POOH PU 4.6 GAGE RING FOR 5.5 CSG RIH DOWN TO @8270 POOH PICK UP 5.5 SIBP RIH SET @ 8270' RDWL OCD MR. R. TRUJILLO

PICK UP BOP NU WORK ON RD 4" LINE CONNECTED TO THE WELL HEAD

RU FLOOR & TBG EQUIPMENT WORK ON BJ TONGS REPLACE HYDRAULIC HOSES

PU RIH W/70 JNS OF 2 3/8 TCH DOWN TO @2290' SECURE WELL & LOCATION SDFN

TRAVEL TO MOTEL

9.4.25

DROVE TO LOCATION

HOLD TGSM

RIH PU TOTAL OF 253 JNS 2 3/8 TBG TAG CIBP @8270'

WORK ON PUMP AND SENTRIFUGAL PUMP

LOAD HOLE W/170 BBL OF MLF MUD CIRCULATE TO SURFACE WITH 278 BBL

ATTEMPT TO PRESSURE TEST PUMP 10 BBL MUD DO NOT HOLD PRESSURE

PLUG #1

POOH STAND BACK 35 STDS TO @5641' CALL OCD MR. TRUJILLO APPROVE TO TAG PLUG

ATTEMPT TO REVERSE CIRCULATE PUMP 80 BBL 9.5# MLF MUD LOST RETURNS DO NOT LOAD HOLE

SECURE WELL & LOCATION SDFN

TRAVEL TO MOTEL

9.5.25

DROVE TO LOCATION

HOLD TGSM

CHECK WELL PRESSURE '0' PSI, RIH W/35 STDS PU 11 JNS TO @8290' DO NOT TAG CIBP, CALL OCD 8:20 AM MR. TRUJILLO APPROVE TO SET CIBP @8250'

POOH STAND BACK 126 STDS

WO WL

RU AAA WL MAKE UP 5.5 CIBP RIH ATTEMPT TO SET IT POOH MISSED RUN WORK ON WARNING CONNECTIONS MAKE UP CIBP

RIH W/5.5 CIBP AND SET @8250' POOH RD WL SECURE WELL & LOCATION SDFD

TRAVEL TO YARD

9.8.25

TRAVEL TO LOCATION

TGSM

CHECK WELL PRESSURE '0' PSI W/126 STDS TAG CIBP @ 8250'

LOAD HOLE W/190 BBL OF CBL MUD CIRCULATE TO SURFACE W/280 BBL

TEST PLUG W/600 PSI HOLD PRESSURE

PLUG #1 A

POOH STAND BACK 125 STDS SECURE WELL & LOCATION SDFN

TRAVEL TO MOTEL

9.9.25

DROVE TO LOCATION

RU AAA WL RIH LOG CBL FROM 8050' UP TO SURFACE

MR. ROBERT TRUJILLO W/OCD APPROVE TO SPOT THE PLUGS ALL W/25 SKS AND COMVINE THE 8440' TO 4450 W/40 SKS THE 1575' W/30 SKS FROM 505' UP TO SURFACE

RIH W/122 STDS PU 1 JNT TO EOT @ 8030' LOAD HOLE W/3 BBL MUD

PLUG #2

POOH LD 30 JNS TO EOT @ 7043' PU 10' FT SUB TO 7053' LOAD HOLE W/5 BBL

PLUG #3

POOH LD 67 JNS TO EOT @4852' LOAD HOLE W/7 BBL MUD REVERSE CIRCULATE PUMP 25 BBL MUD

TRAVEL TO MOTEL

9.10.25

TRAVEL TO LOCATION

TGSM

LOAD HOLE W/2 BBL MUD PLUG #4

POOH LD 43 JNS TO EOT @3443' LOAD HOLE W/4 BBL MUD  
PLUG #5

POOH LD 57 JNS TO EOT @1577 LOAD HOLE W/7 BBL MUD  
PLUG #6

POOH LD 32 JNS TO EOT @524' LOAD HOLE W/4 BBL MUD  
PLUG #7

POOH LD 16 JNS WASH TUBING & EQUIPMENT FROM CEMENT

RD FLOOR & TBG EQUIPMENT, ND BOP LOAD CEMENT TO TOP, SECURE WELL & LOCATION SDFD  
TRAVEL TO MOTEL

9.11.25

TRAVEL TO LOCATION

TGSM

RDSU RINSE RIG CLEAN READY TO MOVE

PICK UP PUMP AND RINSE CLEAN READY TO MOVE

DIG SELLAR STARTED CUT OFF CASING HEAD TORCH BROKE COULDN'T FINISH CUT OFF SECURE  
WELL & LOCATION SDFD

TRAVEL TO MOTEL

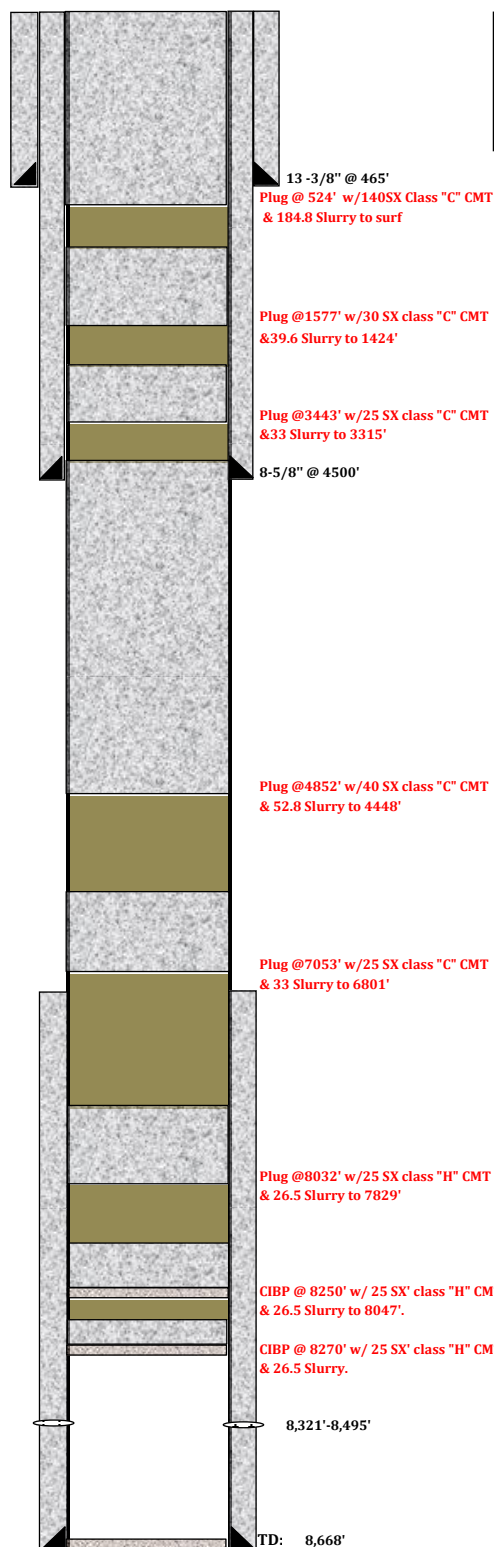
9.12.25

TRAVEL TO LOCATION

FINISH CUT OFF CASING HEAD WELD PLATE AND PIPE W/INFORMATION OF THE WELL AND SLIVE  
W/CEMENT

COVER WELL LEVEL LOCATION SDFD

TRAVEL TO YARD



**FORMATION:** N/A  
**ELEVATION:** N/A

DATE:

## CASING RECORD

[illegible][illegible]

## TUBING

O.D.	WT./FT.	GRADE	THD	TOP	BTM	NO. JTS.	

### PERFORATION RECORD

[illegible][illegible]

Sante Fe Main Office  
Phone: (505) 476-3441

General Information  
Phone: (505) 629-6116

Online Phone Directory  
<https://www.emnrd.nm.gov/ocd/contact-us>

State of New Mexico  
Energy, Minerals and Natural Resources  
Oil Conservation Division  
1220 S. St Francis Dr.  
Santa Fe, NM 87505

CONDITIONS

Action 546678

CONDITIONS

Operator: JAY MANAGEMENT COMPANY, LLC 2401 Fountain View Drive Houston, TX 77057	OGRID: 247692
	Action Number: 546678
	Action Type: [C-103] Sub. Plugging (C-103P)

CONDITIONS

Created By	Condition	Condition Date
gcordero	Clean Location in accordance with 19.15.25.10 NMAC.	1/29/2026
gcordero	Submit C-103Q within one year of plugging.	1/29/2026