

U.S. Department of the Interior
BUREAU OF LAND MANAGEMENT

Well Name: YOUNG DEEP UNIT	Well Location: T18S / R32E / SEC 4 / SWSW / 32.7711239 / -103.7777869	County or Parish/State: LEA / NM
Well Number: 22	Type of Well: OIL WELL	Allottee or Tribe Name:
Lease Number: NMNM24488	Unit or CA Name: YOUNG DEEP UNIT - BONE SP	Unit or CA Number: NMNM71067B
US Well Number: 3002529253	Operator: MATADOR PRODUCTION COMPANY	

Subsequent Report

Sundry ID: 2894453

Type of Submission: Subsequent Report

Type of Action: Plug and Abandonment

Date Sundry Submitted: 02/04/2026

Time Sundry Submitted: 03:24

Date Operation Actually Began: 06/23/2025

Actual Procedure: Young Deep Unit #022 30-025-29253 This well was plugged as follows: 6/23/2025: MIRU rig and associated equipment; Attempted to unset pump & POOH w/ rods but found its stuck; Worked rods w/ hot oiler down tbg & backside; Parted rods, started POOH. 6/24/2025: Continue POOH, recovered polish rod, 14' of pony rods, 124 7/8" rods, & 2.5 3/4" rods; NU & test BOPs; Treat backside w/ hot water; Unset TAC & strip OOH w/ production tbg; found parted rod @ 3,142' TM. 6/25/2026: Continue stripping rods & production tubing OOH. 6/26/2025: Recovered all rods, tubing, and pump. RDMO 12/30/2025: MIRU P&A unit & equipment. SD until after holidays. 1/5/2026: NU & Test BOP; TIH w/ workstring; Pressure test surface lines. 1/6/2026: Continue TIH w/ workstring, tagged obstruction @9,034'TM (116' higher than COA depth), received BLM approval to proceed w/ cementing; Pump plug #1 @9,034' TM (25 sks class H cement balanced plug; TOOH; MIRU WLU, RIH w/ GR/JB to 8,075'WLM, RIH w/ CIBP @ set @8,052' WLM, RDMO WLU, Top fill casing w/ 10# MLF. 1/7/2026: MIRU WLU, tagged CIBP @8,052' WLM, ran RCBL to surface finding TOC @988' WLM, RDMO WLU; Attempted pressure test on casing to 590 psi, lost 200 psi, bad test, notify BLM; TIH & tag CIBP @8,025' TM, circulate 10# MLF to surface, spot plug #2 @ 8,025' TM (50 sks class H cement plug), PU & WOC overnight. 1/8/2026: TIH & tagged @ 8,052' TM, cmt fell below CIBP, Notify BLM and determined to run test packer to confirm leak point; PU test packer and began testing casing. 1/9/2026: Continued testing casing, determined test packer was not sealing fully, set packer @8,002' TM and tested good above packer, failed below packer, notify BLM; TOOH & LD packer; MIRU WLU, RIH w/ CIBP & set @8,019' WLM, RDMO WLU; Top fill casing & pressure test against CIBP to 520 psi for 30 minutes, good test. 1/12/2026: TIH w/ workstring & tag CIBP @8,002' TM; Circulate 10# MLF to surface; Pump plug #2 @8,002' TM (25 sks class H cement); PU & WOC overnight. 1/13/2026: TIH & tag plug #2 @7,859' TM; PU to 6,060' TM & pump plug #3 (115 sks class C cement balanced plug); PU & WOC 4 hours; TIH & tag plug #3 @5,078' TM; PU to 4,720' TM & pump plug

Well Name: YOUNG DEEP UNIT

Well Location: T18S / R32E / SEC 4 / SWSW / 32.7711239 / -103.7777869

County or Parish/State: LEA / NM

Well Number: 22

Type of Well: OIL WELL

Allottee or Tribe Name:

Lease Number: NMNM24488

Unit or CA Name: YOUNG DEEP UNIT - BONE SP

Unit or CA Number: NMNM71067B

US Well Number: 3002529253

Operator: MATADOR PRODUCTION COMPANY

#4 (140 sks class C cement balanced plug); PU & WOC overnight. 1/14/2026: TIH & tag plug #4 @3,464' TM; PU to 3,125' TM & pump plug #5 (100 sks class C cement balanced plug); PU & WOC 4 hours; TIH & tag plug #5 @ 2,072' TM; PU to 1,455' TM & pump plug #6 (65 sks class C cement balanced plug); PU & WOC overnight. 1/15/2026: TIH & tag plug #6 @806' TM; MIRU WLU, perforate @512' WLM, RDMO WLU; Established circulation to 8-5/8" casing from surface; ND BOP & NU pumping flange; Pump plug #7 from surface thru perfs (125 sks class C cement squeeze plug) received good cement returns at surface. 1/16/2026: Cut off wellhead and installed 1/4" plate w/ weephole as well as below ground marker with the following information: Matador Production Company, Young Deep Unit #022, NMNM 24488, 3002529253, Lea County, T18S/R32E/Sec4/SWSW, Date: 1/16/2026; RDMO P&A rig and equipment; backfilled cellar and back dragged location. Spud Date: 5/17/1985 Plug Date: RDMO: 1/16/2026 BLM Inspector: Stephen Bailey

SR Attachments

Actual Procedure

BLM_Packet_02.04.26_20260204152439.pdf

Operator

I certify that the foregoing is true and correct. Title 18 U.S.C. Section 1001 and Title 43 U.S.C. Section 1212, make it a crime for any person knowingly and willfully to make to any department or agency of the United States any false, fictitious or fraudulent statements or representations as to any matter within its jurisdiction. Electronic submission of Sundry Notices through this system satisfies regulations requiring a

Operator Electronic Signature: BRETT JENNINGS

Signed on: FEB 04, 2026 03:24 PM

Name: MATADOR PRODUCTION COMPANY

Title: Regulatory Analyst

Street Address: 5400 LBJ FREEWAY STE 1500

City: DALLAS

State: TX

Phone: (972) 629-2160

Email address: BRETT.JENNINGS@MATADORRESOURCES.COM

Field

Representative Name:

Street Address:

City:

State:

Zip:

Phone:

Email address:

Well Name: YOUNG DEEP UNIT

Well Location: T18S / R32E / SEC 4 / SWSW / 32.7711239 / -103.7777869

County or Parish/State: LEA / NM

Well Number: 22

Type of Well: OIL WELL

Allottee or Tribe Name:

Lease Number: NMNM24488

Unit or CA Name: YOUNG DEEP UNIT - BONE SP

Unit or CA Number: NMNM71067B

US Well Number: 3002529253

Operator: MATADOR PRODUCTION COMPANY

BLM Point of Contact

BLM POC Name: JAMES A AMOS

BLM POC Title: Acting Assistant Field Manager

BLM POC Phone: 5752345927

BLM POC Email Address: JAMOS@BLM.GOV

Disposition: Accepted

Disposition Date: 02/09/2026

Signature: James A Amos

CONFIDENTIAL

Young Deep Unit #022

30-025-29253

This well was plugged as follows:

6/23/2025: MIRU rig and associated equipment; Attempted to unset pump & POOH w/ rods but found its stuck; Worked rods w/ hot oiler down tbg & backside; Parted rods, started POOH.

6/24/2025: Continue POOH, recovered polish rod, 14' of pony rods, 124 7/8" rods, & 2.5 3/4" rods; NU & test BOPs; Treat backside w/ hot water; Unset TAC & strip OOH w/ production tbg; found parted rod @ 3,142' TM.

6/25/2026: Continue stripping rods & production tubing OOH.

6/26/2025: Recovered all rods, tubing, and pump. RDMO

12/30/2025: MIRU P&A unit & equipment. SD until after holidays.

1/5/2026: NU & Test BOP; TIH w/ workstring; Pressure test surface lines.

1/6/2026: Continue TIH w/ workstring, tagged obstruction @9,034'TM (116' higher than COA depth), received BLM approval to proceed w/ cementing; Pump plug #1 @9,034' TM (25 sks class H cement balanced plug; TOOH; MIRU WLU, RIH w/ GR/JB to 8,075'WLM, RIH w/ CIBP @ set @8,052' WLM, RDMO WLU, Top fill casing w/ 10# MLF.

1/7/2026: MIRU WLU, tagged CIBP @8,052' WLM, ran RCBL to surface finding TOC @988' WLM, RDMO WLU; Attempted pressure test on casing to 590 psi, lost 200 psi, bad test, notify BLM; TIH & tag CIBP @8,025' TM, circulate 10# MLF to surface, spot plug #2 @ 8,025' TM (50 sks class H cement plug), PU & WOC overnight.

1/8/2026: TIH & tagged @ 8,052' TM, cmt fell below CIBP, Notify BLM and determined to run test packer to confirm leak point; PU test packer and began testing casing.

1/9/2026: Continued testing casing, determined test packer was not sealing fully, set packer @8,002' TM and tested good above packer, failed below packer, notify BLM; TOOH & LD packer; MIRU WLU, RIH w/ CIBP & set @8,019' WLM, RDMO WLU; Top fill casing & pressure test against CIBP to 520 psi for 30 minutes, good test.

1/12/2026: TIH w/ workstring & tag CIBP @8,002' TM; Circulate 10# MLF to surface; Pump plug #2 @8,002' TM (25 sks class H cement); PU & WOC overnight.

1/13/2026: TIH & tag plug #2 @7,859' TM; PU to 6,060' TM & pump plug #3 (115 sks class C cement balanced plug); PU & WOC 4 hours; TIH & tag plug #3 @5,078' TM; PU to 4,720' TM & pump plug #4 (140 sks class C cement balanced plug); PU & WOC overnight.

1/14/2026: TIH & tag plug #4 @3,464' TM; PU to 3,125' TM & pump plug #5 (100 sks class C cement balanced plug); PU & WOC 4 hours; TIH & tag plug #5 @ 2,072' TM; PU to 1,455' TM & pump plug #6 (65 sks class C cement balanced plug); PU & WOC overnight.

1/15/2026: TIH & tag plug #6 @806' TM; MIRU WLU, perforate @512' WLM, RDMO WLU; Established circulation to 8-5/8" casing from surface; ND BOP & NU pumping flange; Pump plug #7 from surface thru perfs (125 sks class C cement squeeze plug) received good cement returns at surface.

1/16/2026: Cut off wellhead and installed 1/4" plate w/ weep hole as well as below ground marker with the following information: Matador Production Company, Young Deep Unit #022, NMNM 24488, 3002529253, Lea County, T18S/R32E/Sec4/SWSW, Date: 1/16/2026; RDMO P&A rig and equipment; backfilled cellar and back dragged location.

Spud Date: 5/17/1985

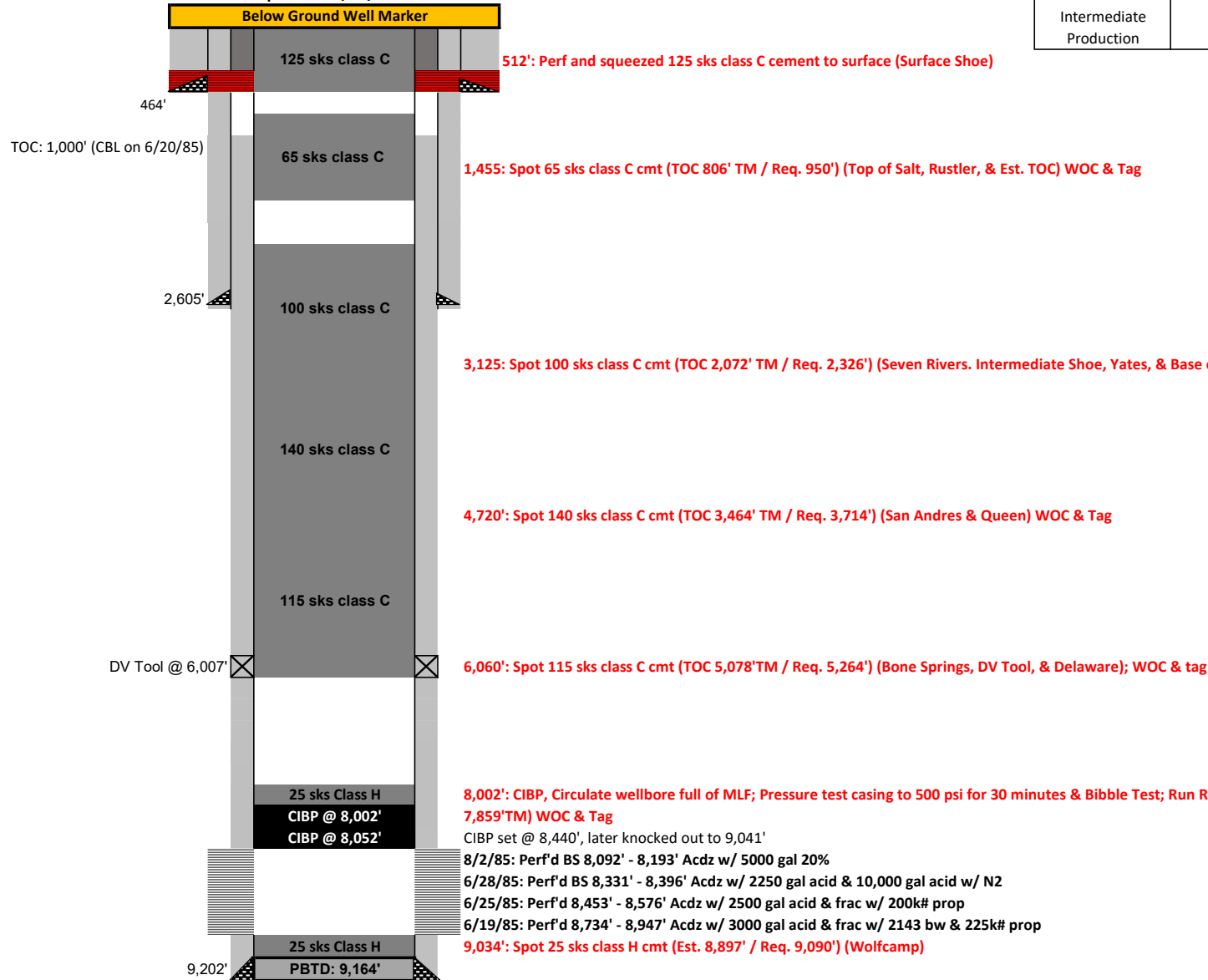
Plug Date: RDMO: 1/16/2026

BLM Inspector: Stephen Bailey

Young Deep Unit #022
660' FSL 660' FWL Sec. 4-T18S-R32E
Lea County, NM
API: 30-025-29253

As of 2/19/2025

CURRENT WELLBORE SCHEMATIC
Spudded: 5/17/1985

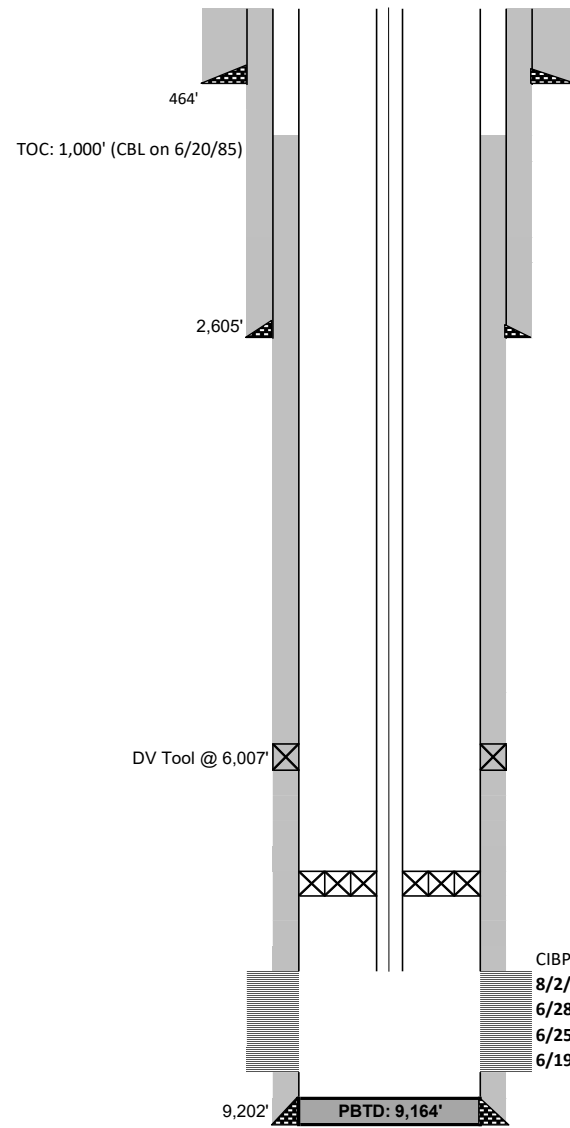


Casing Information						
Casing String	Casing Size	Weight lb/ft	Depth Set	Hole Size	Burst Rating (80%)	Cementing Record
Surface	13 3/8"	54.5#	464'	17 7/8"	1,384 psi	TOC @ Surface
Intermediate	8 5/8"	32# & 24#	2,605'	12 1/4"	3,144 psi	TOC @ Surface
Production	5-1/2"	17#	9,202'	7 7/8"	4,256 psi	TOC @ 1,000'
		DV tool	6,007'			

Geologic Markers		
Rustler	1111	
Top of Salt	*1405	YD 36
Yates	2618	YD 4 fed 3
Seven Rivers	*3062	
Queen	3764	
Grayburg		YD 13
San Andres	*4680	YD 4 fed 3
Delaware	*5314	
Bone Spring	6008	
1st BS sand		
2nd BS Sand		
3rd BS Sand		
Wolfcamp	9140	
*Taken from direct offset wells		

Young Deep Unit #022
660' FSL 660' FWL Sec. 4-T18S-R32E
Lea County, NM
API: 30-025-29253
CURRENT WELLBORE SCHEMATIC
Spudded: 5/17/1985

As of 2/19/2025



Casing Information						
Casing String	Casing Size	Weight lb/ft	Depth Set	Hole Size	Burst Rating (80%)	Cementing Record
Surface	13 3/8"	54.5#	464'	17 7/8"	1,384 psi	TOC @ Surface
Intermediate	8 5/8"	32# & 24#	2,605'	12 1/4"	3,144 psi	TOC @ Surface
Production	5-1/2"	17#	9,202'	7 7/8"	4,256 psi	TOC @ 1,000'
		DV tool	6,007'			

Rods		Tubing		Depth
Polish Rod	1.5"x26'	2 3/8"	277	
Total Rods	357	2 3/8" Joints	245	7935'
Pony jts	8', 6', 4'	TAC	1	
7/8"	21	2 3/8" Joints	32	8970'
3/4"	211	Sand Screen	1	
7/8"	124	SN	1	8994'
1"	0	Mud Joints	0	
Pump	2 x 1.25 x 24	BP	1	
		PBSD	9,164' (cleaned out sand to 9,041' 8/29/95)	

Geologic Markers		
Rustler	1111	
Top of Salt	*1405	YD 36
Yates	2618	YD 4 fed 3
Seven Rivers	*3062	
Queen	3764	
Grayburg		YD 13
San Andres	*4680	YD 4 fed 3
Delaware	*5314	
Bone Spring	6008	
1st BS sand		
2nd BS Sand		
3rd BS Sand		
Wolfcamp	9140	

*Taken from direct offset wells

Mark Ritchie

From: Stevens, Zota M <zstevens@blm.gov>
Sent: Friday, January 9, 2026 1:34 PM
To: Mark Ritchie
Cc: Staton, Jon L; Bailey, Stephen A; John Bailey II
Subject: Re: [EXTERNAL] Young Deep Unit #022 COAs

****EXTERNAL EMAIL****

Good Afternoon,
You are approve to set the second CIBP at 8002 ft. Pressure Test the CIBP and spot 25 so. Woc and Tag.

Sent from my Verizon, Samsung Galaxy smartphone
Get [Outlook for Android](#)

From: Mark Ritchie <mark.ritchie@matadorresources.com>
Sent: Friday, January 9, 2026 12:26:22 PM
To: Stevens, Zota M <zstevens@blm.gov>
Cc: Staton, Jon L <jstaton@blm.gov>; Bailey, Stephen A <sbailey@blm.gov>; John Bailey II <john.bailey@matadorresources.com>
Subject: RE: [EXTERNAL] Young Deep Unit #022 COAs

Mr. Stevens, thank you for taking my call earlier. As discussed we discovered that the elements in the packer were likely set a bit too tight which required us to pull 30k over to create a good seal as opposed to the typical 10k. We discovered this after trying pressure tests at several spots along the well without success. Once the appropriate tension was applied to the packer we did end up getting a good back side pressure test at 8,002' (90' above perfs) of 620psi for 30 minutes as shown in the pictures attached.

With your approval I would like to set a second CIBP @8,002' and continue plugging out as planned. The depth of the first CIBP was confirmed to be at 8,025' via tubing tag.

Respectfully,

Mark Ritchie
Operations Engineer
Matador Resources Company
5400 LBJ Freeway
Dallas, Tx 75240
(713) 553-8320

From: Immatty, Keith P <kimmatty@blm.gov>
Sent: Thursday, January 8, 2026 9:56 AM
To: Mark Ritchie <mark.ritchie@matadorresources.com>; Stevens, Zota M <zstevens@blm.gov>
Cc: Staton, Jon L <jstaton@blm.gov>; Bailey, Stephen A <sbailey@blm.gov>; John Bailey II <john.bailey@matadorresources.com>
Subject: RE: [EXTERNAL] Young Deep Unit #022 COAs

****EXTERNAL EMAIL****

Mark, Zota is in the office this morning. Please check with him. I am the On-Call Engineer for the week and will be available when Zota is not available.

Zota, any feedback for Mark?

Regards,

Keith Immatty

From: Mark Ritchie <mark.ritchie@matadorresources.com>
Sent: Thursday, January 8, 2026 8:39 AM
To: Immatty, Keith P <kimmatty@blm.gov>; Stevens, Zota M <zstevens@blm.gov>
Cc: Staton, Jon L <jstaton@blm.gov>; Bailey, Stephen A <sbailey@blm.gov>; John Bailey II <john.bailey@matadorresources.com>
Subject: RE: [EXTERNAL] Young Deep Unit #022 COAs

Keith, it looks like we did not get a good seal on our CIBP as it drank the cement we spotted last night. I would like to request your approval to set another one just above it at 8,008' which puts it 84' above the top perf.

Respectfully,

Mark Ritchie
Operations Engineer
Matador Resources Company
5400 LBJ Freeway
Dallas, Tx 75240
(713) 553-8320

From: Mark Ritchie
Sent: Wednesday, January 7, 2026 11:22 AM
To: 'Immatty, Keith P' <kimmatty@blm.gov>; Stevens, Zota M <zstevens@blm.gov>
Cc: Staton, Jon L <jstaton@blm.gov>; Bailey, Stephen A <sbailey@blm.gov>; John Bailey II <john.bailey@matadorresources.com>
Subject: RE: [EXTERNAL] Young Deep Unit #022 COAs

Keith, please see attached for the .pdf & .tif files from the RCBL on the Young Deep Unit #022. My interpretation has the TOC @ 1,020' WLM which should allow us to still make the revisions approved in the emails below.

Respectfully,

Mark Ritchie
Operations Engineer
Matador Resources Company
5400 LBJ Freeway
Dallas, Tx 75240
(713) 553-8320

From: Immatty, Keith P <kimmatty@blm.gov>
Sent: Wednesday, January 7, 2026 8:44 AM
To: Mark Ritchie <mark.ritchie@matadorresources.com>; Stevens, Zota M <zstevens@blm.gov>
Cc: Staton, Jon L <jstaton@blm.gov>; Bailey, Stephen A <sbailey@blm.gov>; John Bailey II <john.bailey@matadorresources.com>
Subject: RE: [EXTERNAL] Young Deep Unit #022 COAs

****EXTERNAL EMAIL****

Reviewed and is accurate. Request granted based on casing set depth and cemented shoe track.

Regards,

Keith Immatty

From: Mark Ritchie <mark.ritchie@matadorresources.com>
Sent: Wednesday, January 7, 2026 7:40 AM
To: Stevens, Zota M <zstevens@blm.gov>; Immatty, Keith P <kimmatty@blm.gov>
Cc: Staton, Jon L <jstaton@blm.gov>; Bailey, Stephen A <sbailey@blm.gov>; John Bailey II <john.bailey@matadorresources.com>
Subject: RE: [EXTERNAL] Young Deep Unit #022 COAs

Mr. Stevens, I also forgot to mention that we ended up tagging at 9,034' on suspected fill which puts us 116' above the first spotted plug. With Mr. Immatty's approval we spotted the plug at that point which puts the estimated TOC @ 8,781'.

Respectfully,

Mark Ritchie
Operations Engineer
Matador Resources Company
5400 LBJ Freeway
Dallas, Tx 75240
(713) 553-8320

From: Mark Ritchie
Sent: Tuesday, January 6, 2026 2:12 PM
To: 'Stevens, Zota M' <zstevens@blm.gov>
Cc: Staton, Jon L <jstaton@blm.gov>; Bailey, Stephen A <sbailey@blm.gov>; John Bailey II <john.bailey@matadorresources.com>
Subject: RE: [EXTERNAL] Young Deep Unit #022 COAs

Mr. Stevens, I hope you and yours are having a safe and happy start to the new year!

We are currently rigged up on the Young Deep Unit #022 (30-025-29253) and I was hoping that I could combine the following plugs to gain some operational efficiency by adding more cement.

- 6,060' (Bone Springs & DV Tool) & 5,365' (Deleware)
 - 115 sks class C cement @6,060 to cover all 3 required tops and put TOC @4,897'

- 4,720' (San Andres) & 3,815' (Queen)
 - 140 sks class C cement @ 4,720' to cover both tops and put TOC @ 3,304'

Pending the results of the RCBL I would also like to request your approval to remove the perforation at the Intermediate shoe to combine the plugs at 3,125' (Seven Rivers) and 2,670' (Intermediate Shoe, Yates, & Base of Salt). We would spot 100 sks @3,125' to put TOC @ 2,114' to cover the zones here.

Attached is the approved WBD as well as the proposed revised WBD with combined plugs for reference.

Respectfully,

Mark Ritchie
Operations Engineer
Matador Resources Company
5400 LBJ Freeway
Dallas, Tx 75240
(713) 553-8320

From: Stevens, Zota M <zstevens@blm.gov>
Sent: Monday, August 4, 2025 11:45 AM
To: Mark Ritchie <mark.ritchie@matadorresources.com>
Cc: Jackson Driggs <JDriggs@matadorresources.com>; Staton, Jon L <jstaton@blm.gov>; Bailey, Stephen A <sbailey@blm.gov>
Subject: Re: [EXTERNAL] Young Deep Unit #022 COAs

****EXTERNAL EMAIL****

All oil-bearing zones need to be associated and tag including DV TOOL, casing shoes .

Zota Stevens
Bureau of Land Management
Petroleum Engineer
Phone: 575.234.5998
Cell: 575.361.8620
Email: zstevens@blm.gov

From: Mark Ritchie <mark.ritchie@matadorresources.com>
Sent: Monday, August 4, 2025 10:39 AM
To: Stevens, Zota M <zstevens@blm.gov>
Cc: Jackson Driggs <JDriggs@matadorresources.com>; Staton, Jon L <jstaton@blm.gov>; Bailey, Stephen A <sbailey@blm.gov>
Subject: Re: [EXTERNAL] Young Deep Unit #022 COAs

Thank you Mr. Stevens. Also, do you happen to have the rule you could send me where it requires the plugs across those zones to be tagged? I am having trouble locating the correct verbiage.

Respectfully,

From: Stevens, Zota M <zstevens@blm.gov>
Sent: Monday, August 4, 2025 11:34:58 AM
To: Mark Ritchie <mark.ritchie@matadorresources.com>
Cc: Jackson Driggs <JDriggs@matadorresources.com>; Staton, Jon L <jstaton@blm.gov>; Bailey, Stephen A <sbailey@blm.gov>
Subject: Re: [EXTERNAL] Young Deep Unit #022 COAs

****EXTERNAL EMAIL****

Good Morning,
 You are approved with this revised procedure.
 Zota Stevens
 Bureau of Land Management
 Petroleum Engineer
 Phone: 575.234.5998
 Cell: 575.361.8620
 Email: zstevens@blm.gov

From: Mark Ritchie <mark.ritchie@matadorresources.com>
Sent: Monday, August 4, 2025 10:21 AM
To: Stevens, Zota M <zstevens@blm.gov>
Cc: Jackson Driggs <JDriggs@matadorresources.com>
Subject: [EXTERNAL] Young Deep Unit #022 COAs

This email has been received from outside of DOI - Use caution before clicking on links, opening attachments, or responding.

Mr. Stevens, please see below for the updated procedure for the Young Deep Unit #022 (30-025-29253). If I am understanding correctly, the additional WOC & Tag steps are due to the reasons highlighted in yellow correct?

Does this change once the casing cement top is confirmed to be above these zones?

1. Safety meeting MIRU check pressure, ND wellhead, NU and Test BOP, POOH w/rods and Tubing.
2. Spot 25 sx of Cl H from 9150'-8897'. **(T/ Wolfcamp).**
3. Set CIBP and spot 25 sx Cl H from 8050' to 7847'. Pressure Test. **WOC and Tag.**
4. Run CBL from 7847' to surface. **Submit CBL to BLM.**
5. Spot 25 sx of Cl C cmt from 6060' to 5807. **WOC and Tag (T/B Spring, DV Tool).**
6. Spot 25sx Cl C cmt from 5365'-5112'. **WOC and Tag (T/Delaware) ~Delaware plug needs to be tagged due to it being a major formation top.**
7. Spot 25sx Cl C cmt from 4720'-4467'. (T/San Andres)
8. Spot 25sx Cl C cmt from 3815'-3562'. (T/Queen)
9. Spot 25sx Cl C cmt from 3115'-2682'. **WOC and Tag (T/Seven Rivers) ~One of the three previous plugs needs to be tagged (San Andres, Queen, or Seven Rivers)**

10. Perf and Sqz 40 sx Cl C cmt from 2670'- 2505'. **WOC and Tag** (T/Yates. Inter. Shoe)

11. Spot 65sx Cl C cmt from 1455'-798'. **WOC and Tag** (T/Salt) ~Plug at Top of Salt formation needs to be tagged.

12. Perf and Sqz 256 sx Cl C cmt from 514'- surface.

Cut off wellhead and verify cmt to surface on all csg strings.

Install dry hole marker per NMOCD specifications.

*Current and proposed wellbore diagrams attached

**Mud laden fluid (MLF) mixed at 25sks/100 bbls water will be spotted between each plug.

Respectfully,

Mark Ritchie
Operations Engineer
Matador Resources Company
5400 LBJ Freeway
Dallas, Tx 75240
(713) 553-8320

This message is strictly confidential and is for the sole use of the intended recipient. If you are not the intended recipient of this message, you may not disclose, print, copy, disseminate or otherwise use this message or the information included herein. If you are not the intended recipient, please reply and notify the sender (only) and promptly delete the message.

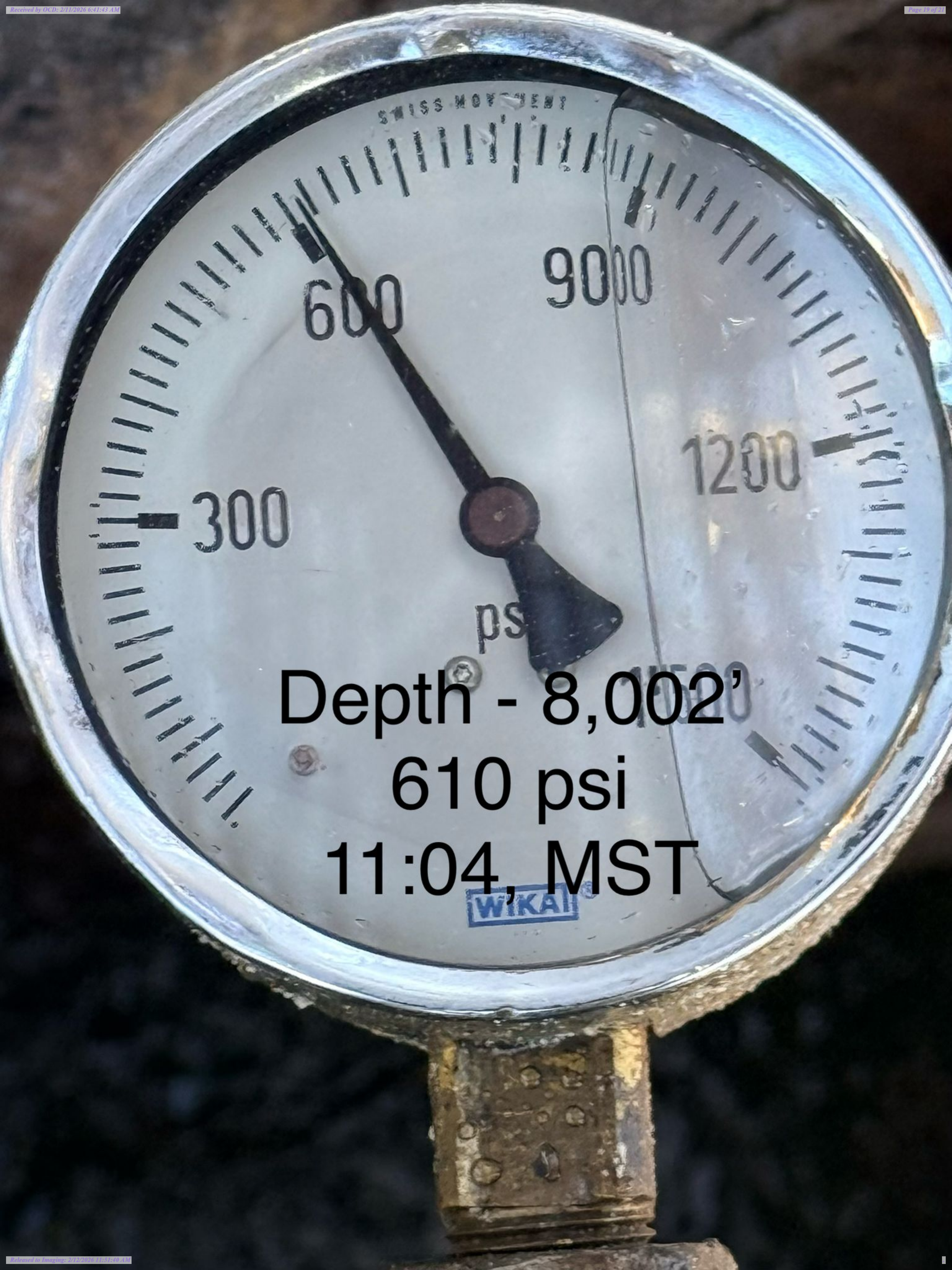












Depth - 8,002'
610 psi
11:04, MST

MATADOR
PRODUCTION COMPANY
YOUNG DEEP UNIT #022
NMNM 24488
3002529253
LEA COUNTY
T18S/R32E/SEC 4 / SWSW
DATE:
2/16/2026

Sante Fe Main Office
Phone: (505) 476-3441

General Information
Phone: (505) 629-6116

Online Phone Directory
<https://www.emnrd.nm.gov/ocd/contact-us>

State of New Mexico
Energy, Minerals and Natural Resources
Oil Conservation Division
1220 S. St Francis Dr.
Santa Fe, NM 87505

CONDITIONS

Action 552632

CONDITIONS

Operator: MATADOR PRODUCTION COMPANY One Lincoln Centre Dallas, TX 75240	OGRID: 228937
	Action Number: 552632
	Action Type: [C-103] Sub. Plugging (C-103P)

CONDITIONS

Created By	Condition	Condition Date
gcordero	None	2/12/2026