

Jones, Brad A., EMNRD

From: James_McDaniel@xtoenergy.com
Sent: Wednesday, October 12, 2011 4:32 PM
To: Jones, Brad A., EMNRD
Subject: BGT Closure Aztec COM 4 #1E

Brad,

I would like to request approval of the closure plan only for the BGT located at the Aztec COM 4 #1E well site (30-045-30273) located in Unit M, Section 16, Township 30N, Range 11W, San Juan County, New Mexico. Our records indicate that this closure plan was submitted to your office on 11/25/2008. Thanks very much for your time in regards to this matter.



James McDaniel, CHMM #15676

EH&S Supervisor

XTO Energy, Inc.

Office # 505-333-3701

Cell # 505-787-0519

James_McDaniel@xtoenergy.com

District I
1625 N. French Dr., Hobbs, NM 88240
District II
1301 W. Grand Avenue, Artesia, NM 88210
District III
1000 Rio Brazos Road, Aztec, NM 87410
District IV
1220 S. St. Francis Dr., Santa Fe, NM 87505

State of New Mexico
Energy Minerals and Natural Resources
Department
Oil Conservation Division
1220 South St. Francis Dr.
Santa Fe, NM 87505

Form C-144
July 21, 2008

For temporary pits, closed-loop systems, and below-grade tanks, submit to the appropriate NMOC District Office.
For permanent pits, and exceptions submit to the Santa Fe Environmental Bureau office and provide a copy to the appropriate NMOC District Office.
2008 NOV 25 PM 1 07

**Pit, Closed-Loop System, Below-Grade Tank, or
Proposed Alternative Method Permit or Closure Plan Application**

Type of action: ☒ Permit of a pit, closed-loop system, below-grade tank, or proposed alternative method
Existing BGT ☐ Closure of a pit, closed-loop system, below-grade tank, or proposed alternative method
☐ Modification to an existing permit
☒ Closure plan only submitted for an existing permitted or non-permitted pit, closed-loop system, below-grade tank, or proposed alternative method

Instructions: Please submit one application (Form C-144) per individual pit, closed-loop system, below-grade tank or alternative request

Please be advised that approval of this request does not relieve the operator of liability should operations result in pollution of surface water, ground water or the environment. Nor does approval relieve the operator of its responsibility to comply with any other applicable governmental authority's rules, regulations or ordinances.

1.
Operator: XTO Energy, Inc. OGRID #: 5380
Address: #382 County Road 3100, Aztec, NM 87410
Facility or well name: AZTEC COM 4 #1E
API Number: 30-045-30273 OCD Permit Number: _____
U/L or Qtr/Qtr M Section 16 Township 30N Range 11W County: San Juan
Center of Proposed Design: Latitude 36.80778 Longitude 108.00222 NAD: ☐ 1927 ☒ 1983
Surface Owner: ☐ Federal ☐ State ☒ Private ☐ Tribal Trust or Indian Allotment

2.
☐ **Pit:** Subsection F or G of 19.15.17.11 NMAC
Temporary: ☐ Drilling ☐ Workover
☐ Permanent ☐ Emergency ☐ Cavitation ☐ P&A
☐ Lined ☐ Unlined Liner type: Thickness _____ mil ☐ LLDPE ☐ HDPE ☐ PVC ☐ Other _____
☐ String-Reinforced
Liner Seams: ☐ Welded ☐ Factory ☐ Other _____ Volume: _____ bbl Dimensions: L _____ x W _____ x D _____

3.
☐ **Closed-loop System:** Subsection H of 19.15.17.11 NMAC
Type of Operation: ☐ P&A ☐ Drilling a new well ☐ Workover or Drilling (Applies to activities which require prior approval of a permit or notice of intent)
☐ Drying Pad ☐ Above Ground Steel Tanks ☐ Haul-off Bins ☐ Other _____
☐ Lined ☐ Unlined Liner type: Thickness _____ mil ☐ LLDPE ☐ HDPE ☐ PVC ☐ Other _____
Liner Seams: ☐ Welded ☐ Factory ☐ Other _____

4.
☒ **Below-grade tank:** Subsection I of 19.15.17.11 NMAC
Volume: 120 bbl Type of fluid: Produced Water
Tank Construction material: Steel
☐ Secondary containment with leak detection ☐ Visible sidewalls, liner, 6-inch lift and automatic overflow shut-off
☐ Visible sidewalls and liner ☐ Visible sidewalls only ☒ Other Visible sidewalls, vaulted, automatic high-level shut off, no liner
Liner type: Thickness _____ mil ☐ HDPE ☐ PVC ☐ Other _____

5.
☐ **Alternative Method:**
Submittal of an exception request is required. Exceptions must be submitted to the Santa Fe Environmental Bureau office for consideration of approval.

6.

Fencing: Subsection D of 19.15.17.11 NMAC (*Applies to permanent pits, temporary pits, and below-grade tanks*)

- ☐ Chain link, six feet in height, two strands of barbed wire at top (*Required if located within 1000 feet of a permanent residence, school, hospital, institution or church*)
- ☐ Four foot height, four strands of barbed wire evenly spaced between one and four feet
- ☒ Alternate. Please specify Four foot height, steel mesh field fence (hogwire) with pipe top railing

7.

Netting: Subsection E of 19.15.17.11 NMAC (*Applies to permanent pits and permanent open top tanks*)

- ☐ Screen ☐ Netting ☒ Other Expanded metal or solid vaulted top
- ☐ Monthly inspections (If netting or screening is not physically feasible)

8.

Signs: Subsection C of 19.15.17.11 NMAC

- ☐ 12"x 24", 2" lettering, providing Operator's name, site location, and emergency telephone numbers
- ☒ Signed in compliance with 19.15.3.103 NMAC

9.

Administrative Approvals and Exceptions:

Justifications and/or demonstrations of equivalency are required. Please refer to 19.15.17 NMAC for guidance.

Please check a box if one or more of the following is requested, if not leave blank:

- ☐ Administrative approval(s): Requests must be submitted to the appropriate division district or the Santa Fe Environmental Bureau office for consideration of approval.
- ☐ Exception(s): Requests must be submitted to the Santa Fe Environmental Bureau office for consideration of approval.

10.

Siting Criteria (regarding permitting): 19.15.17.10 NMAC

Instructions: *The applicant must demonstrate compliance for each siting criteria below in the application. Recommendations of acceptable source material are provided below. Requests regarding changes to certain siting criteria may require administrative approval from the appropriate district office or may be considered an exception which must be submitted to the Santa Fe Environmental Bureau office for consideration of approval. Applicant must attach justification for request. Please refer to 19.15.17.10 NMAC for guidance. Siting criteria does not apply to drying pads or above-grade tanks associated with a closed-loop system.*

Ground water is less than 50 feet below the bottom of the temporary pit, permanent pit, or below-grade tank.

- NM Office of the State Engineer - iWATERS database search; USGS; Data obtained from nearby wells

☐ Yes ☒ No

Within 300 feet of a continuously flowing watercourse, or 200 feet of any other significant watercourse or lakebed, sinkhole, or playa lake (measured from the ordinary high-water mark).

- Topographic map; Visual inspection (certification) of the proposed site

☒ Yes ☐ No

Within 300 feet from a permanent residence, school, hospital, institution, or church in existence at the time of initial application. (*Applies to temporary, emergency, or cavitation pits and below-grade tanks*)

- Visual inspection (certification) of the proposed site; Aerial photo; Satellite image

☐ Yes ☒ No
☐ NA

Within 1000 feet from a permanent residence, school, hospital, institution, or church in existence at the time of initial application. (*Applies to permanent pits*)

- Visual inspection (certification) of the proposed site; Aerial photo; Satellite image

☐ Yes ☐ No
☒ NA

Within 500 horizontal feet of a private, domestic fresh water well or spring that less than five households use for domestic or stock watering purposes, or within 1000 horizontal feet of any other fresh water well or spring, in existence at the time of initial application.

- NM Office of the State Engineer - iWATERS database search; Visual inspection (certification) of the proposed site

☐ Yes ☒ No

Within incorporated municipal boundaries or within a defined municipal fresh water well field covered under a municipal ordinance adopted pursuant to NMSA 1978, Section 3-27-3, as amended.

- Written confirmation or verification from the municipality; Written approval obtained from the municipality

☒ Yes ☐ No

Within 500 feet of a wetland.

- US Fish and Wildlife Wetland Identification map; Topographic map; Visual inspection (certification) of the proposed site

☐ Yes ☒ No

Within the area overlying a subsurface mine.

- Written confirmation or verification or map from the NM EMNRD-Mining and Mineral Division

☐ Yes ☒ No

Within an unstable area.

- Engineering measures incorporated into the design; NM Bureau of Geology & Mineral Resources; USGS; NM Geological Society; Topographic map

☐ Yes ☒ No

Within a 100-year floodplain.

- FEMA map

☐ Yes ☒ No

11.

Temporary Pits, Emergency Pits, and Below-grade Tanks Permit Application Attachment Checklist: Subsection B of 19.15.17.9 NMAC**Instructions:** Each of the following items must be attached to the application. Please indicate, by a check mark in the box, that the documents are attached.

- ☒ Hydrogeologic Report (Below-grade Tanks) - based upon the requirements of Paragraph (4) of Subsection B of 19.15.17.9 NMAC
- ☐ Hydrogeologic Data (Temporary and Emergency Pits) - based upon the requirements of Paragraph (2) of Subsection B of 19.15.17.9 NMAC
- ☒ Siting Criteria Compliance Demonstrations - based upon the appropriate requirements of 19.15.17.10 NMAC
- ☒ Design Plan - based upon the appropriate requirements of 19.15.17.11 NMAC
- ☒ Operating and Maintenance Plan - based upon the appropriate requirements of 19.15.17.12 NMAC
- ☒ Closure Plan (Please complete Boxes 14 through 18, if applicable) - based upon the appropriate requirements of Subsection C of 19.15.17.9 NMAC and 19.15.17.13 NMAC

☐ Previously Approved Design (attach copy of design) API Number: _____ or Permit Number: _____

12.

Closed-loop Systems Permit Application Attachment Checklist: Subsection B of 19.15.17.9 NMAC**Instructions:** Each of the following items must be attached to the application. Please indicate, by a check mark in the box, that the documents are attached.

- ☐ Geologic and Hydrogeologic Data (only for on-site closure) - based upon the requirements of Paragraph (3) of Subsection B of 19.15.17.9
- ☐ Siting Criteria Compliance Demonstrations (only for on-site closure) - based upon the appropriate requirements of 19.15.17.10 NMAC
- ☐ Design Plan - based upon the appropriate requirements of 19.15.17.11 NMAC
- ☐ Operating and Maintenance Plan - based upon the appropriate requirements of 19.15.17.12 NMAC
- ☐ Closure Plan (Please complete Boxes 14 through 18, if applicable) - based upon the appropriate requirements of Subsection C of 19.15.17.9 NMAC and 19.15.17.13 NMAC

☐ Previously Approved Design (attach copy of design) API Number: _____☐ Previously Approved Operating and Maintenance Plan API Number: _____ (Applies only to closed-loop system that use above ground steel tanks or haul-off bins and propose to implement waste removal for closure)

13.

Permanent Pits Permit Application Checklist: Subsection B of 19.15.17.9 NMAC**Instructions:** Each of the following items must be attached to the application. Please indicate, by a check mark in the box, that the documents are attached.

- ☐ Hydrogeologic Report - based upon the requirements of Paragraph (1) of Subsection B of 19.15.17.9 NMAC
- ☐ Siting Criteria Compliance Demonstrations - based upon the appropriate requirements of 19.15.17.10 NMAC
- ☐ Climatological Factors Assessment
- ☐ Certified Engineering Design Plans - based upon the appropriate requirements of 19.15.17.11 NMAC
- ☐ Dike Protection and Structural Integrity Design - based upon the appropriate requirements of 19.15.17.11 NMAC
- ☐ Leak Detection Design - based upon the appropriate requirements of 19.15.17.11 NMAC
- ☐ Liner Specifications and Compatibility Assessment - based upon the appropriate requirements of 19.15.17.11 NMAC
- ☐ Quality Control/Quality Assurance Construction and Installation Plan
- ☐ Operating and Maintenance Plan - based upon the appropriate requirements of 19.15.17.12 NMAC
- ☐ Freeboard and Overtopping Prevention Plan - based upon the appropriate requirements of 19.15.17.11 NMAC
- ☐ Nuisance or Hazardous Odors, including H₂S, Prevention Plan
- ☐ Emergency Response Plan
- ☐ Oil Field Waste Stream Characterization
- ☐ Monitoring and Inspection Plan
- ☐ Erosion Control Plan
- ☐ Closure Plan - based upon the appropriate requirements of Subsection C of 19.15.17.9 NMAC and 19.15.17.13 NMAC

14.

Proposed Closure: 19.15.17.13 NMAC**Instructions:** Please complete the applicable boxes, Boxes 14 through 18, in regards to the proposed closure plan.Type: ☐ Drilling ☐ Workover ☐ Emergency ☐ Cavitation ☐ P&A ☐ Permanent Pit ☒ Below-grade Tank ☐ Closed-loop System
☐ AlternativeProposed Closure Method: ☒ Waste Excavation and Removal
☐ Waste Removal (Closed-loop systems only)
☐ On-site Closure Method (Only for temporary pits and closed-loop systems)
☐ In-place Burial ☐ On-site Trench Burial
☐ Alternative Closure Method (Exceptions must be submitted to the Santa Fe Environmental Bureau for consideration)

15.

Waste Excavation and Removal Closure Plan Checklist: (19.15.17.13 NMAC) **Instructions:** Each of the following items must be attached to the closure plan. Please indicate, by a check mark in the box, that the documents are attached.

- ☒ Protocols and Procedures - based upon the appropriate requirements of 19.15.17.13 NMAC
- ☒ Confirmation Sampling Plan (if applicable) - based upon the appropriate requirements of Subsection F of 19.15.17.13 NMAC
- ☒ Disposal Facility Name and Permit Number (for liquids, drilling fluids and drill cuttings)
- ☒ Soil Backfill and Cover Design Specifications - based upon the appropriate requirements of Subsection H of 19.15.17.13 NMAC
- ☒ Re-vegetation Plan - based upon the appropriate requirements of Subsection I of 19.15.17.13 NMAC
- ☒ Site Reclamation Plan - based upon the appropriate requirements of Subsection G of 19.15.17.13 NMAC

16.

Waste Removal Closure For Closed-loop Systems That Utilize Above Ground Steel Tanks or Haul-off Bins Only: (19.15.17.13.D NMAC)**Instructions:** Please identify the facility or facilities for the disposal of liquids, drilling fluids and drill cuttings. Use attachment if more than two facilities are required.

Disposal Facility Name: _____ Disposal Facility Permit Number: _____

Disposal Facility Name: _____ Disposal Facility Permit Number: _____

Will any of the proposed closed-loop system operations and associated activities occur on or in areas that *will not* be used for future service and operations?☐ Yes (If yes, please provide the information below) ☐ No*Required for impacted areas which will not be used for future service and operations:*☐ Soil Backfill and Cover Design Specifications - based upon the appropriate requirements of Subsection H of 19.15.17.13 NMAC☐ Re-vegetation Plan - based upon the appropriate requirements of Subsection I of 19.15.17.13 NMAC☐ Site Reclamation Plan - based upon the appropriate requirements of Subsection G of 19.15.17.13 NMAC

17.

Siting Criteria (regarding on-site closure methods only): 19.15.17.10 NMAC**Instructions:** Each siting criteria requires a demonstration of compliance in the closure plan. Recommendations of acceptable source material are provided below. Requests regarding changes to certain siting criteria may require administrative approval from the appropriate district office or may be considered an exception which must be submitted to the Santa Fe Environmental Bureau office for consideration of approval. Justifications and/or demonstrations of equivalency are required. Please refer to 19.15.17.10 NMAC for guidance.

Ground water is less than 50 feet below the bottom of the buried waste.

- NM Office of the State Engineer - iWATERS database search; USGS; Data obtained from nearby wells

☐ Yes ☐ No
☐ NA

Ground water is between 50 and 100 feet below the bottom of the buried waste

- NM Office of the State Engineer - iWATERS database search; USGS; Data obtained from nearby wells

☐ Yes ☐ No
☐ NA

Ground water is more than 100 feet below the bottom of the buried waste.

- NM Office of the State Engineer - iWATERS database search; USGS; Data obtained from nearby wells

☐ Yes ☐ No
☐ NA

Within 300 feet of a continuously flowing watercourse, or 200 feet of any other significant watercourse or lakebed, sinkhole, or playa lake (measured from the ordinary high-water mark).

- Topographic map; Visual inspection (certification) of the proposed site

☐ Yes ☐ No

Within 300 feet from a permanent residence, school, hospital, institution, or church in existence at the time of initial application.

- Visual inspection (certification) of the proposed site; Aerial photo; Satellite image

☐ Yes ☐ No

Within 500 horizontal feet of a private, domestic fresh water well or spring that less than five households use for domestic or stock watering purposes, or within 1000 horizontal feet of any other fresh water well or spring, in existence at the time of initial application.

- NM Office of the State Engineer - iWATERS database; Visual inspection (certification) of the proposed site

☐ Yes ☐ No

Within incorporated municipal boundaries or within a defined municipal fresh water well field covered under a municipal ordinance adopted pursuant to NMSA 1978, Section 3-27-3, as amended.

- Written confirmation or verification from the municipality; Written approval obtained from the municipality

☐ Yes ☐ No

Within 500 feet of a wetland.

- US Fish and Wildlife Wetland Identification map; Topographic map; Visual inspection (certification) of the proposed site

☐ Yes ☐ No

Within the area overlying a subsurface mine.

- Written confirmation or verification or map from the NM EMNRD-Mining and Mineral Division

☐ Yes ☐ No

Within an unstable area.

- Engineering measures incorporated into the design; NM Bureau of Geology & Mineral Resources; USGS; NM Geological Society; Topographic map

☐ Yes ☐ No

Within a 100-year floodplain.

- FEMA map

☐ Yes ☐ No

18.

On-Site Closure Plan Checklist: (19.15.17.13 NMAC) **Instructions:** Each of the following items must be attached to the closure plan. Please indicate, by a check mark in the box, that the documents are attached.☐ Siting Criteria Compliance Demonstrations - based upon the appropriate requirements of 19.15.17.10 NMAC☐ Proof of Surface Owner Notice - based upon the appropriate requirements of Subsection F of 19.15.17.13 NMAC☐ Construction/Design Plan of Burial Trench (if applicable) based upon the appropriate requirements of 19.15.17.11 NMAC☐ Construction/Design Plan of Temporary Pit (for in-place burial of a drying pad) - based upon the appropriate requirements of 19.15.17.11 NMAC☐ Protocols and Procedures - based upon the appropriate requirements of 19.15.17.13 NMAC☐ Confirmation Sampling Plan (if applicable) - based upon the appropriate requirements of Subsection F of 19.15.17.13 NMAC☐ Waste Material Sampling Plan - based upon the appropriate requirements of Subsection F of 19.15.17.13 NMAC☐ Disposal Facility Name and Permit Number (for liquids, drilling fluids and drill cuttings or in case on-site closure standards cannot be achieved)☐ Soil Cover Design - based upon the appropriate requirements of Subsection H of 19.15.17.13 NMAC☐ Re-vegetation Plan - based upon the appropriate requirements of Subsection I of 19.15.17.13 NMAC☐ Site Reclamation Plan - based upon the appropriate requirements of Subsection G of 19.15.17.13 NMAC

19.

Operator Application Certification:

I hereby certify that the information submitted with this application is true, accurate and complete to the best of my knowledge and belief.

Name (Print): Kim Champlin Title: Environmental Representative
 Signature: Kim Champlin Date: 11-21-08
 e-mail address: kim_champlin@xtoenergy.com Telephone: (505) 333-3100

20.

OCD Approval: ☐ Permit Application (including closure plan) ☒ Closure Plan (only) ☐ OCD Conditions (see attachment)

OCD Representative Signature: [Signature] Approval Date: 10/13/11

Title: Environmental Engineer OCD Permit Number: _____

21.

Closure Report (required within 60 days of closure completion): Subsection K of 19.15.17.13 NMAC

Instructions: Operators are required to obtain an approved closure plan prior to implementing any closure activities and submitting the closure report. The closure report is required to be submitted to the division within 60 days of the completion of the closure activities. Please do not complete this section of the form until an approved closure plan has been obtained and the closure activities have been completed.

☐ Closure Completion Date: _____

22.

Closure Method:

☐ Waste Excavation and Removal ☐ On-Site Closure Method ☐ Alternative Closure Method ☐ Waste Removal (Closed-loop systems only)
☐ If different from approved plan, please explain.

23.

Closure Report Regarding Waste Removal Closure For Closed-loop Systems That Utilize Above Ground Steel Tanks or Haul-off Bins Only:

Instructions: Please identify the facility or facilities for where the liquids, drilling fluids and drill cuttings were disposed. Use attachment if more than two facilities were utilized.

Disposal Facility Name: _____ Disposal Facility Permit Number: _____

Disposal Facility Name: _____ Disposal Facility Permit Number: _____

Were the closed-loop system operations and associated activities performed on or in areas that will not be used for future service and operations?

☐ Yes (If yes, please demonstrate compliance to the items below) ☐ No

Required for impacted areas which will not be used for future service and operations:

- ☐ Site Reclamation (Photo Documentation)
☐ Soil Backfilling and Cover Installation
☐ Re-vegetation Application Rates and Seeding Technique

24.

Closure Report Attachment Checklist: Instructions: Each of the following items must be attached to the closure report. Please indicate, by a check mark in the box, that the documents are attached.

- ☐ Proof of Closure Notice (surface owner and division)
☐ Proof of Deed Notice (required for on-site closure)
☐ Plot Plan (for on-site closures and temporary pits)
☐ Confirmation Sampling Analytical Results (if applicable)
☐ Waste Material Sampling Analytical Results (required for on-site closure)
☐ Disposal Facility Name and Permit Number
☐ Soil Backfilling and Cover Installation
☐ Re-vegetation Application Rates and Seeding Technique
☐ Site Reclamation (Photo Documentation)

On-site Closure Location: Latitude _____ Longitude _____ NAD: ☐ 1927 ☐ 1983

25.

Operator Closure Certification:

I hereby certify that the information and attachments submitted with this closure report is true, accurate and complete to the best of my knowledge and belief. I also certify that the closure complies with all applicable closure requirements and conditions specified in the approved closure plan.

Name (Print): _____ Title: _____
 Signature: _____ Date: _____
 e-mail address: _____ Telephone: _____

District I
PO Box 1980, Hobbs, NM, 88241-1980

District II
PO Drawer DD, Artesia, NM 88211-0719

District III
1000 Rio Brazos Rd., Aztec, NM 87410

District IV
PO Box 2088, Santa Fe, NM 87504-2088

State of New Mexico
Energy, Minerals & Natural Resources Department

OIL CONSERVATION DIVISION
PO Box 2088
Santa Fe, NM 87504-2088

Form C-102
Revised February 21, 1994
Instructions on back
Submit to Appropriate District Office
State Lease - 4 Copies
Fee Lease - 3 Copies

☐ AMENDED REPORT

WELL LOCATION AND ACREAGE DEDICATION PLAT

*API Number 30.045-30273	*Pool Code 71599/72319	*Pool Name BASIN DAKOTA / Blanco MV
*Property Code 26050	*Property Name AZTEC COM 4	*Well Number 1E
*GRID No. 167067	*Operator Name CROSS TIMBERS OPERATING COMPANY	*Elevation 5666'

¹⁰ Surface Location

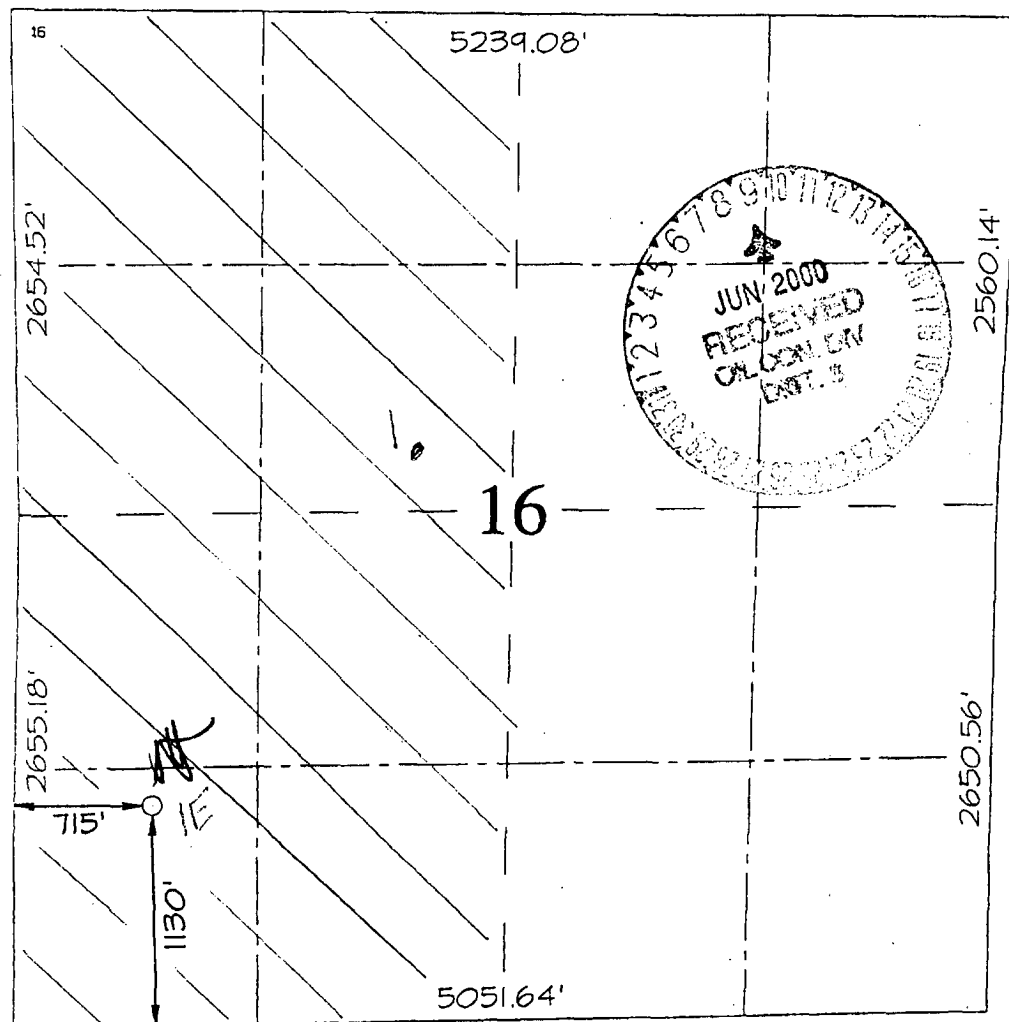
UL or lot no.	Section	Township	Range	Lot Idn	Feet from the	North/South line	Feet from the	East/West line	County
M	16	30N	11W		1130	SOUTH	715	WEST	SAN JUAN

¹¹ Bottom Hole Location If Different From Surface

UL or lot no.	Section	Township	Range	Lot Idn	Feet from the	North/South line	Feet from the	East/West line	County

¹² Dedicated Acres W/2 320	¹³ Joint or Infill	¹⁴ Consolidation Code	¹⁵ Order No.
--	-------------------------------	----------------------------------	-------------------------

NO ALLOWABLE WILL BE ASSIGNED TO THIS COMPLETION UNTIL ALL INTERESTS HAVE BEEN CONSOLIDATED OR A NON-STANDARD UNIT HAS BEEN APPROVED BY THE DIVISION



¹⁷ OPERATOR CERTIFICATION

I hereby certify that the information contained herein is true and complete to the best of my knowledge and belief.

Signature: *Jeff Patton*
Printed Name: Jeff Patton
Title: Production Engineer
Date: 6/6/00

¹⁸ SURVEYOR CERTIFICATION

I hereby certify that the well location shown on this plat was plotted from field notes of actual surveys made by me or under my supervision and that the same is true and correct to the best of my belief.

APRIL 11, 2000
Date of Survey
Signature and Seal of Professional Surveyor: *Neale C. Edwards*
Certificate No. 6857



Lodestar Services, Inc.
PO Box 4465, Durango, CO 81302

Pit Permit Siting Criteria Information Sheet

Client:	XTO Energy
Project:	Pit Permits
Revised:	22-Oct-08
Prepared by:	Brooke Herb

API#:	3004530273	USPLSS:	T30N,R11W,S16M
Name:	AZTEC COM 4 #1E	Lat/Long:	36.80778, -108.00222
Depth to groundwater:	50' - 100'	Geologic formation:	Nacimiento Formation
Distance to closest continuously flowing watercourse:	4585' SE of the Animas River		
Distance to closest significant watercourse, lakebed, playa lake, or sinkhole:	80' W of Williams Arroyo; 1390' S of Lower Animas Irrigation Ditch		
Permanent residence, school, hospital, institution or church within 300'	No	Soil Type:	Entisols
Domestic fresh water well or spring within 500'	No	Annual Precipitation:	9.77 inches (Aztec)
Any other fresh water well or spring within 1000'	No	Precipitation Notes:	no significant precip events
Within incorporated municipal boundaries	Yes - Aztec	Attached Documents:	Groundwater report and Data; FEMA Flood Zone Map
Within defined municipal fresh water well field	No		Aerial Photo, Topo Map, Mines Mills and Quarries Map
Wetland within 500'	No	Mining Activity:	1.57 miles SE of Airport Pit
Within unstable area	No		
Within 100 year flood plain	No - FEMA Flood Zone 'X'		

Additional Notes:

AZTEC COM 4 #1E Below Ground Tank Siting Criteria and Closure Plan

Well Site Location

Legals: T30N, R11W, Section 16, Quarter Section M

Latitude/Longitude: approximately 36.80778, -107.00222

County: San Juan County, NM

General Description: near Aztec, NM

General Geology and Hydrology

The San Juan Basin is a typical Rocky Mountain basin with a gently dipping southern flank and a steeply dipping northern flank. Asymmetrically layered Tertiary sandstones and shales, along with Quaternary alluvial deposits dominate surficial geology (Dane and Bachman, 1965). The proposed below ground tank location will be located near Aztec, NM between the Animas and San Juan rivers. The Nacimient Formation of Tertiary Age is exposed, along with Quaternary alluvial and aeolian sands within dry washes and arroyos.

Cretaceous and Tertiary sandstones, as well as Quaternary alluvial deposits serve as the primary aquifers in the San Juan basin (Stone et al., 1983). In most of the proposed area, the Nacimient Formation lies at the surface. Thickness of the Nacimient ranges from 418 to 2232 feet (Stone et al., 1983). Aquifers within the coarser and continuous sandstone bodies of the Nacimient Formation are between 0 and 1000' deep in this section of the basin (Stone et al., 1983). Groundwater within these aquifers flows toward the nearby San Juan River and its tributaries.

The prominent soil type at the proposed site is entisols, which are defined as soils that do not show any profile development. Soils are basically unaltered from their parent rock. Miles of arroyos, washes and intermittent streams exist as part of the drainage network towards the La Plata River (www.emnrd.state.nm.us). These features often cut into soil and other unconsolidated materials, contributing to sedimentation downstream. The sudden influx of water from storm events easily erodes soils that cover the area.

The climate of the region is arid, averaging just over 8 inches of rainfall annually. As is typical of the southwestern United States monsoonal weather patterns, most precipitation falls from August through October. The heaviest rainfall occurs in the summer in isolated, intense cloudbursts. November through June is relatively dry. Snow generally falls from December to mid-February and averages less than one-half inch in depth. However, most recharge occurs during the winter months during snowmelt periods from the upper elevations (Western Regional Climate Center www.wrcc.dri.edu).

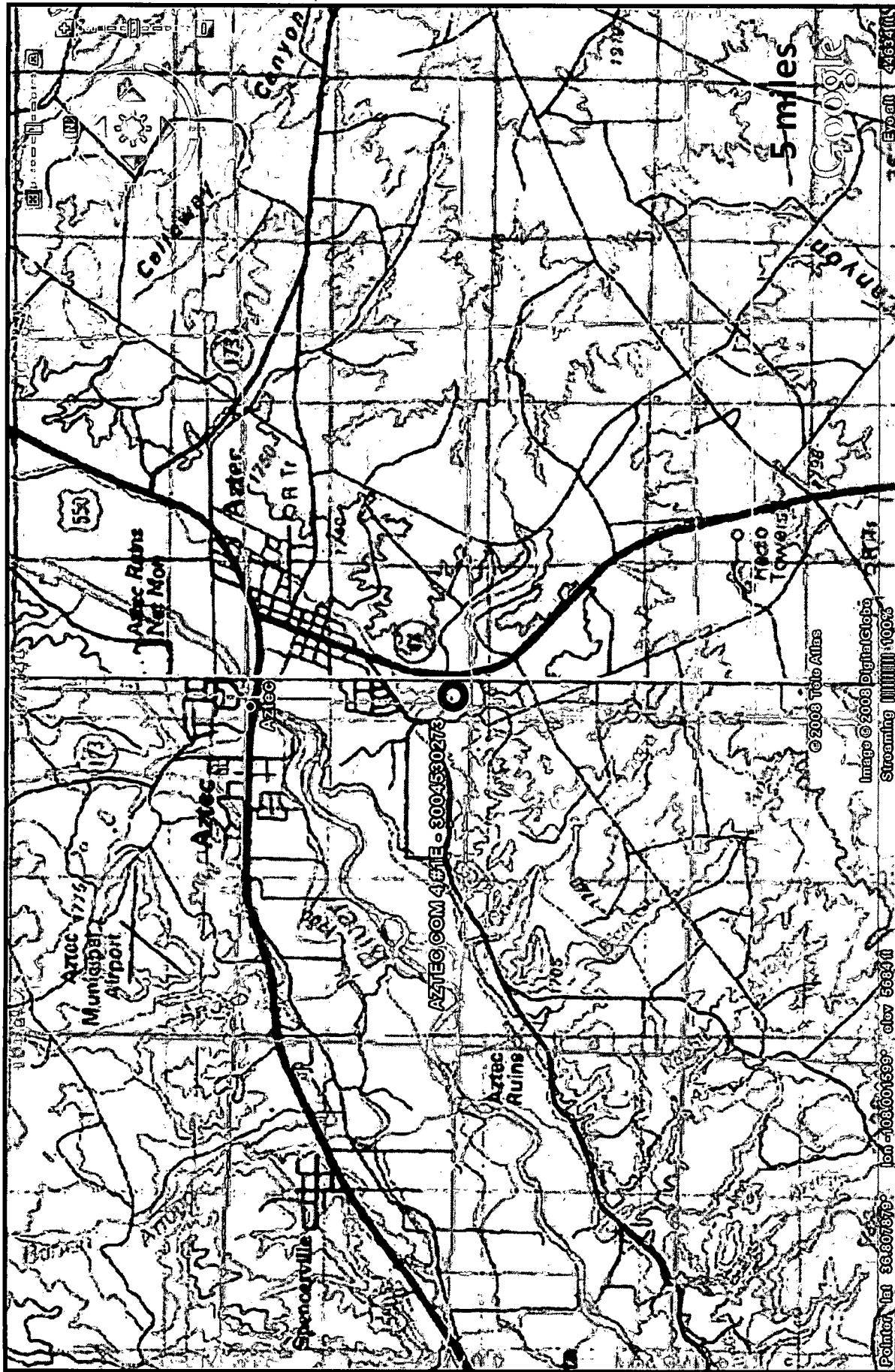
The predominant vegetation is sagebrush and grasses with a more restricted pinon-juniper association (Dick-Peddie, 1993).

Site Specific Hydrogeology

Depth to groundwater is estimated to be between 50 feet and 100 feet. This estimation is based on data from Stone and others, 1983 and depth to groundwater data published on the New Mexico State Engineer's iWaters Database website. Local topography and proximity to surface hydrologic features are also taken into consideration.

Local aquifers include sandstones within the Nacimient Formation, which ranges from 0 to 1000 feet deep in this area, as well as shallow aquifers within Quaternary alluvial deposits (Stone et al., 1983). The 1000-foot depth range for Nacimient aquifers covers an area over 20 miles wide, and depth decreases towards the margin of the San Juan Basin. The site in question is more centrally located, and depth to the aquifer is expected to be closer to 1000 feet. It is well known that groundwater close to the Animas River can be shallow, as the Quaternary deposits near the river itself form shallow aquifers. However, the proposed site is situated 4585 feet to the south-southeast of the Animas River, and is approximately 90 feet higher in elevation (Google Earth).

Groundwater data available from the NM State Engineer's iWaters Database for wells near the proposed site are attached. A map showing the location of wells in reference to the proposed pit location is also included. Pinpoints show locations of wells and the labels for each pinpoint indicate depth to groundwater in feet. Wells are clustered to the north-northwest along the Animas River. Depth to groundwater within the nearby wells ranges from 9 feet to 63 feet below ground surface. The closest well to the proposed site is located approximately 1690 feet to the northwest, and is approximately 30 feet lower in topographic elevation (Google Earth). Depth to groundwater within the well is 35 feet below ground surface. Another well to the northwest is approximately 25 feet lower in elevation than the proposed site, and has a depth to groundwater of 41 feet below ground surface. A well to the west is approximately 25 feet higher in elevation, and has a depth to groundwater of 9 feet below ground surface.



<p>Lodestar Services, Inc PO Box 4465 Durango, CO 81302</p>	<p>AZTEC COM 4 #1E T30N, R11W, S16M San Juan County, NM</p>	<p>Topographic Map</p>
---	---	------------------------

New Mexico Office of the State Engineer
 POD Reports and Downloads

Township: Range: Sections:

POD / Surface Data Report Avg Depth to Water Report Water Column Report

WATER COLUMN REPORT 09/29/2008

(quarters are 1=NW 2=NE 3=SW 4=SE)
 (quarters are biggest to smallest)

POD Number	Twp	Rng	Sec	q	q	Zone	X	Y	Depth Well	Depth Water	Water Column	Depth (in feet)
RG 50669	30N	11W	27						360	310	50	
SJ 02765	30N	11W	02	1	3				54	20	34	
SJ 00975	30N	11W	02	1	3				60	20	40	
SJ 01217	30N	11W	02	1	3				60	30	30	
SJ 02837	30N	11W	02	3	4	1			150			
SJ 01437	30N	11W	03	1					40	28	12	
SJ 03121	30N	11W	03	1	2	4			36	12	24	
SJ 02049	30N	11W	03	1	3				26	8	18	
SJ 01339	30N	11W	03	1	3	1			40	15	25	
SJ 02814	30N	11W	03	1	3	2			31	8	23	
SJ 00350	30N	11W	03	1	3	2			46	12	34	
SJ 01441	30N	11W	03	1	3	2			48	20	28	
SJ 02835	30N	11W	03	1	3	2			26	8	18	
SJ 01387	30N	11W	03	1	4				40	18	22	
SJ 03698 POD1	30N	11W	03	1	4	1			40	8	32	
SJ 02785	30N	11W	03	1	4	2			31	8	23	
SJ 01313	30N	11W	03	2					70	58	12	
SJ 01805	30N	11W	03	2					35	20	15	
SJ 01807	30N	11W	03	2	1				50	30	20	
SJ 01202	30N	11W	03	2	1	2			36	8	27	
SJ 02781	30N	11W	03	2	1	2			48	23	25	
SJ 03758 POD1	30N	11W	03	2	1	2		268158	2127473	45	21	28
SJ 03765 POD1	30N	11W	03	2	1	2		268158	2127605	43	20	23

New Mexico Office of the State Engineer
 POD Reports and Downloads

Township: Range: Sections:

POD / Surface Data ReportAvg Depth to Water ReportWater Column Report

WATER COLUMN REPORT 09/29/2008

(quarters are 1=NW 2=NE 3=SW 4=SE)
 (quarters are biggest to smallest)

POD Number	Tws	Rng	Sec	q	q	Zone	X	Y	Depth Well	Depth Water	Water Column	Water (in feet)
RG 50669	30N	11W	27						360	310	50	
SJ 02765	30N	11W	02	1	3				54	20	34	
SJ 00975	30N	11W	02	1	3				60	20	40	
SJ 01217	30N	11W	02	1	3				60	30	30	
SJ 02837	30N	11W	02	3	4	1			150			
SJ 01437	30N	11W	03	1					40	28	12	
SJ 03121	30N	11W	03	1	2	4			36	12	24	
SJ 02049	30N	11W	03	1	3				26	8	18	
SJ 01339	30N	11W	03	1	3	1			40	15	25	
SJ 02814	30N	11W	03	1	3	2			31	8	23	
SJ 00350	30N	11W	03	1	3	2			46	12	34	
SJ 01441	30N	11W	03	1	3	2			48	20	28	
SJ 02835	30N	11W	03	1	3	2			26	8	18	
SJ 01387	30N	11W	03	1	4				40	18	22	
SJ 03698 POD1	30N	11W	03	1	4	1			40	5	35	
SJ 02785	30N	11W	03	1	4	2			31	5	26	
SJ 01313	30N	11W	03	2					70	58	12	
SJ 01805	30N	11W	03	2					35	20	15	
SJ 01807	30N	11W	03	2	1				50	30	20	
SJ 01202	30N	11W	03	2	1	2			35	8	27	
SJ 02781	30N	11W	03	2	1	2			48	23	25	
SJ 03758 POD1	30N	11W	03	2	1	2		268158	49	21	28	
SJ 03765 POD1	30N	11W	03	2	1	2		268163	43	20	23	

SJ 03756 POD1	30N	11W	03	2	1	2	268179	2127870	41	20	21
SJ 02786	30N	11W	03	2	3	1			51	24	27
SJ 01901	30N	11W	03	2	3	2			60	26	34
SJ 00698	30N	11W	03	2	3	3			44	14	30
SJ 01261	30N	11W	03	2	3	4				20	
SJ 02930	30N	11W	03	2	4	4			81	64	17
SJ 02798	30N	11W	03	2	4	4			80	61	19
SJ 00402	30N	11W	03	3					32	18	14
SJ 01734	30N	11W	03	3	2				33	5	28
SJ 00762	30N	11W	03	3	2				47	22	25
SJ 01440	30N	11W	03	3	2	3			41	21	20
SJ 01020	30N	11W	03	3	3				27	5	22
SJ 03242	30N	11W	03	3	3	1			23	9	14
SJ 03732 POD1	30N	11W	03	3	3	1			38	9	29
SJ 03239	30N	11W	03	3	3	3			33	12	21
SJ 01238	30N	11W	03	4	1				95	38	57
SJ 02245	30N	11W	03	4	1	3			66	30	36
SJ 01043	30N	11W	03	4	1	4			50		
SJ 01249	30N	11W	03	4	2				52	22	30
SJ 02563	30N	11W	03	4	2	1			96	60	36
SJ 02824	30N	11W	03	4	2	1			70	50	20
SJ 03153	30N	11W	03	4	2	1			80	60	20
SJ 03454	30N	11W	03	4	2	4			100		
SJ 03291	30N	11W	03	4	3	2			38	18	20
SJ 00366	30N	11W	03	4	4				33	18	15
SJ 01364	30N	11W	04	2					115	36	29
SJ 03076	30N	11W	04	2	2	3			44	10	34
SJ 02903	30N	11W	04	2	3	2			49	31	18
SJ 03039	30N	11W	04	4	1	2			53	40	13
SJ 01450	30N	11W	04	4	3				45	20	25
SJ 02941	30N	11W	04	4	3	2			58	37	21
SJ 01367	30N	11W	04	4	4	1			48	20	28
SJ 03407	30N	11W	04	4	4	4			30	5	25
SJ 03267	30N	11W	05	2	1	3			83	60	23
SJ 03245	30N	11W	06	4	4	4			80	65	15
SJ 02194	30N	11W	07						59	22	37
SJ 02140	30N	11W	07	1	1	1			70	60	10
SJ 00689	30N	11W	07	1	4	3			78	65	13
SJ 00690	30N	11W	07	1	4	3			60		
SJ 00882	30N	11W	07	1	4	3			60	50	10

W 453700 2124100

SJ 00889	30N	11W 07	1 4 3			55	20	18
SJ 00806	30N	11W 07	1 4 3			38	58	12
SJ 00739	30N	11W 07	1 4 3			70		
SJ 00389	30N	11W 07	1 4 3			53		
SJ 00688	30N	11W 07	1 4 3			70		
SJ 00358	30N	11W 07	1 4 3			61		
SJ 00397	30N	11W 07	1 4 3			56		
SJ 00415	30N	11W 07	1 4 3			53		
SJ 00387	30N	11W 07	1 4 3			60		
SJ 00748	30N	11W 07	1 4 3			49		
SJ 03271	30N	11W 07	2 3 2			80		
SJ 01475	30N	11W 07	2 3 3			25		
SJ 03465	30N	11W 07	2 3 4			60		
SJ 00259	30N	11W 07	2 4			44		
SJ 01492	30N	11W 07	3			50		
SJ 03794 POD1	30N	11W 07	3 1 3		266272 2119520	61		
SJ 01172	30N	11W 07	3 2			68		
SJ 01310	30N	11W 07	3 3			75		
SJ 01484	30N	11W 07	3 3			55		
SJ 03630	30N	11W 07	3 3 3			60		
SJ 01425	30N	11W 07	3 4			50		
SJ 01468	30N	11W 07	3 4			20		
SJ 02006	30N	11W 07	3 4 2			20		
SJ 03484	30N	11W 07	3 4 3			180		
SJ 02005	30N	11W 07	3 4 4			50		
SJ 02715	30N	11W 07	3 4 4			55		
SJ 00135	30N	11W 07	4 1			68		
SJ 00769	30N	11W 07	4 1			157		
SJ 01406	30N	11W 07	4 1			36		
SJ 02936	30N	11W 07	4 1 1			45		
SJ 00679	30N	11W 07	4 1 3			38		
SJ 00620	30N	11W 07	4 1 3			48		
SJ 00329	30N	11W 07	4 1 3			52		
SJ 00162	30N	11W 07	4 1 3			63		
SJ 02906	30N	11W 07	4 1 4			58		
SJ 00893	30N	11W 07	4 2			45		
SJ 01667	30N	11W 07	4 3			80		
SJ 01404	30N	11W 07	4 3			41		
SJ 00919	30N	11W 07	4 3 2			40		
SJ 00604	30N	11W 07	4 3 2			35		
						38		

SJ 00601	30N	11W 07	4 3 2	40	22	18
SJ 00918	30N	11W 07	4 3 2	35	14	21
SJ 00920	30N	11W 07	4 3 2	35	12	23
SJ 01567	30N	11W 07	4 4 2	35	14	21
SJ 00183	30N	11W 08	1 1 1	360	300	60
SJ 03154	30N	11W 08	1 1 4	40		
SJ 03431	30N	11W 08	1 4	50		
SJ 00332	30N	11W 08	2 2	52	34	18
SJ 01451	30N	11W 08	2 2	64	34	30
SJ 01968	30N	11W 08	2 2	40	25	15
SJ 01999	30N	11W 08	2 2	61	45	16
SJ 01814	30N	11W 08	2 2	52	10	42
SJ 03398	30N	11W 08	2 2 1	80	20	60
SJ 03210	30N	11W 08	2 2 2	60	30	30
SJ 03098	30N	11W 08	2 2 2	63	23	40
SJ 03381	30N	11W 08	2 2 2	50		
SJ 03240	30N	11W 08	2 2 2	50		
SJ 00220	30N	11W 08	2 2 3	60	36	24
SJ 03639	30N	11W 08	2 2 4	60	24	36
SJ 01115	30N	11W 08	2 2 4	35	26	9
SJ 03653	30N	11W 08	2 2 4	62	26	36
SJ 03646	30N	11W 08	2 2 4	61	24	37
SJ 00228	30N	11W 08	2 2 4	67	38	29
SJ 03202	30N	11W 08	2 4 2	45		
SJ 03030	30N	11W 08	2 4 2	56	40	16
SJ 03305	30N	11W 08	2 4 2	50		
SJ 03378	30N	11W 08	2 4 2	50		
SJ 02331	30N	11W 08	2 4 2	53	35	18
SJ 03303	30N	11W 08	2 4 2	55	30	25
SJ 02293	30N	11W 08	2 4 2	50	35	15
SJ 00249	30N	11W 08	2 4 2	46	30	16
SJ 01368	30N	11W 08	3 2	55	39	20
SJ 03089	30N	11W 08	3 2 4	48	36	12
SJ 03480	30N	11W 08	3 2 4	50		
SJ 03199	30N	11W 08	3 4 1	40	20	20
SJ 02413	30N	11W 08	3 4 1	40	31	9
SJ 02915	30N	11W 08	3 4 1	45		
SJ 03367	30N	11W 08	3 4 4	29	5	24
SJ 01570	30N	11W 08	4 1	59	37	22
SJ 00925	30N	11W 08	4 1 2	32	20	12

SJ 03642	30N	11W	08	4	1	2	58	32	26
SJ 01520	30N	11W	08	4	1	2	58	18	40
SJ 03313	30N	11W	08	4	1	4	58	20	98
SJ 02485	30N	11W	08	4	1	4	49	30	19
SJ 02261	30N	11W	08	4	3	2			
SJ 03419	30N	11W	08	4	4	2	41	9	32
SJ 02241	30N	11W	09	1			39	27	12
SJ 01560	30N	11W	09	1	1		36	26	10
SJ 01585	30N	11W	09	1	1		40	28	12
SJ 03499	30N	11W	09	1	1	1	53	12	41
SJ 02236	30N	11W	09	1	1	1	35	17	18
SJ 03304	30N	11W	09	1	1	2	55	30	25
SJ 03209	30N	11W	09	1	1	3	49	32	17
SJ 03726 POD1	30N	11W	09	1	1	3	47	30	17
SJ 03342	30N	11W	09	1	1	3	50	31	19
SJ 03225	30N	11W	09	1	1	4	50		
SJ 03229	30N	11W	09	1	1	4	50		
SJ 00924	30N	11W	09	1	2	2	46	16	30
SJ 00438	30N	11W	09	1	2	3	29	19	10
SJ 01169	30N	11W	09	1	3		56	33	23
SJ 01574	30N	11W	09	1	3		46	27	19
SJ 02237	30N	11W	09	1	3	1	48	28	20
SJ 03019	30N	11W	09	1	3	1	50	30	20
SJ 02493	30N	11W	09	1	3	1	49	26	23
SJ 03724 POD1	30N	11W	09	1	3	1	47	36	11
SJ 03031	30N	11W	09	1	3	1	55	35	20
SJ 01465	30N	11W	09	1	3	2	47		
SJ 02336	30N	11W	09	1	3	2	46	11	35
SJ 03482	30N	11W	09	1	3	2	50		
SJ 03423	30N	11W	09	1	3	2	50	20	30
SJ 00750	30N	11W	09	1	4		26	6	20
SJ 02975	30N	11W	09	2	1	4	37	12	25
SJ 03268	30N	11W	09	2	2	2	61	10	51
SJ 00364	30N	11W	09	2	3	2	50	20	30
SJ 03128	30N	11W	09	2	3	2	50		
SJ 00364 CLW263561	30N	11W	09	2	3	2	33	11	22
SJ 01955	30N	11W	09	2	4		40	11	29
SJ 02528	30N	11W	09	2	4		60	28	32
SJ 02290	30N	11W	09	2	4	2	45	15	30
SJ 00347	30N	11W	09	4			36	19	17

SJ 01436	30N	11W	09	4	1	210	50	160
SJ 03471	30N	11W	09	4	1	20	5	15
SJ 03223	30N	11W	09	4	2	59	25	34
SJ 03263	30N	11W	09	4	2	63	35	28
SJ 03374	30N	11W	09	4	3	44	29	15
SJ 02796	30N	11W	09	4	3	100		
SJ 03214	30N	11W	09	4	4	93	63	30
SJ 03213	30N	11W	09	4	4	100		
SJ 02176	30N	11W	10	1	3	57	37	20
SJ 03356	30N	11W	10	1	3	55	30	25
SJ 03258	30N	11W	10	1	3	55	10	45
SJ 03444	30N	11W	10	1	3	60		
SJ 03248	30N	11W	10	1	3	90	30	60
SJ 03354	30N	11W	10	1	3	80	30	50
SJ 00348	30N	11W	10	1	3	72	24	48
SJ 03032	30N	11W	10	1	4	80	30	50
SJ 02819	30N	11W	10	2	3	140	40	100
SJ 03282	30N	11W	10	2	3	70	30	40
SJ 03281	30N	11W	10	2	3	62	32	30
SJ 03572	30N	11W	10	3	1	70		
SJ 03218	30N	11W	10	3	3	50	30	20
SJ 01720	30N	11W	13			225	90	135
SJ 03745 POD1	30N	11W	13	1	1	325	150	175
SJ 01693	30N	11W	13	1	3	225	89	136
SJ 01672	30N	11W	13	1	3	180	80	100
SJ 01294	30N	11W	13	1	3	92	52	40
SJ 02773	30N	11W	16	1	1	46	25	21
SJ 00410	30N	11W	16	1	2	61	45	16
SJ 03010	30N	11W	16	1	3	80	40	40
SJ 03257	30N	11W	16	1	3	80	40	40
SJ 02923	30N	11W	16	1	3	75	40	35
SJ 03265	30N	11W	16	1	3	90	70	20
SJ 03310	30N	11W	16	1	3	55	20	35
SJ 01082	30N	11W	16	2	2	80	34	46
SJ 01722	30N	11W	17	1		20	8	12
SJ 01528	30N	11W	17	1	1	26	10	16
SJ 03373	30N	11W	17	1	1	50	35	15
SJ 01948	30N	11W	17	1	2	21	3	18
SJ 02817	30N	11W	17	1	2	15		
SJ 01722 POD2	30N	11W	17	1	2	17	3	14

266967 2116417

SJ 01899	30W	11W	17	1	3	2				27	7	20
SJ 03771 POD1	30W	11W	17	1	3	3		266811	211517	20	6	14
SJ 03750 POD1	30W	11W	17	1	3	3		266811	211517	20	6	14
SJ 03319	30W	11W	17	1	3	4				55	31	24
SJ 03266	30W	11W	17	1	4	3				30	10	20
SJ 03436	30W	11W	17	1	4	3				20		
SJ 00745	30W	11W	17	2						54	30	24
SJ 00665	30W	11W	17	2	1					28	14	14
SJ 01342	30W	11W	17	2	1	1				26	5	21
SJ 00166	30W	11W	17	2	3					48	11	37
SJ 01057	30W	11W	17	2	3					63	28	35
SJ 01060	30W	11W	17	2	3					58	23	35
SJ 03241	30W	11W	17	2	3	3				75	20	55
SJ 03269	30W	11W	17	2	3	4				80	10	70
SJ 01200	30W	11W	17	2	4					50	20	30
SJ 03219	30W	11W	17	2	4	2				68	38	30
SJ 00159	30W	11W	17	3	1					35	8	27
SJ 03276	30W	11W	17	3	1	4				60	20	40
SJ 01296	30W	11W	17	3	2					50	10	40
SJ 03249	30W	11W	17	3	2	2				55	12	43
SJ 01810	30W	11W	17	3	4					29	9	20
SJ 00411	30W	11W	17	4	1					60	25	35
SJ 00234	30W	11W	17	4	1					54	23	31
SJ 01847	30W	11W	17	4	1					30	6	24
SJ 00457	30W	11W	17	4	1	2				52	18	34
SJ 00650	30W	11W	17	4	1	3				49	18	31
SJ 02018	30W	11W	17	4	2					100	40	60
SJ 00136	30W	11W	17	4	2					69	35	34
SJ 03718 POD1	30W	11W	17	4	2	2				68	41	27
SJ 03261	30W	11W	17	4	2	2				88	50	38
SJ 03215	30W	11W	18	1	1	3				52	9	43
SJ 01316	30W	11W	18	1	1	3				46	12	34
SJ 03152	30W	11W	18	1	1	3				52	22	30
SJ 02805	30W	11W	18	1	2	1				60		
SJ 03463	30W	11W	18	1	2	1				70	20	50
SJ 02996	30W	11W	18	1	2	1				50	25	25
SJ 00932	30W	11W	18	1	2	4				32	15	17
SJ 01738	30W	11W	18	1	3					33	6	27
SJ 01733	30W	11W	18	1	3					29	9	20
SJ 01786	30W	11W	18	1	3					35	10	25

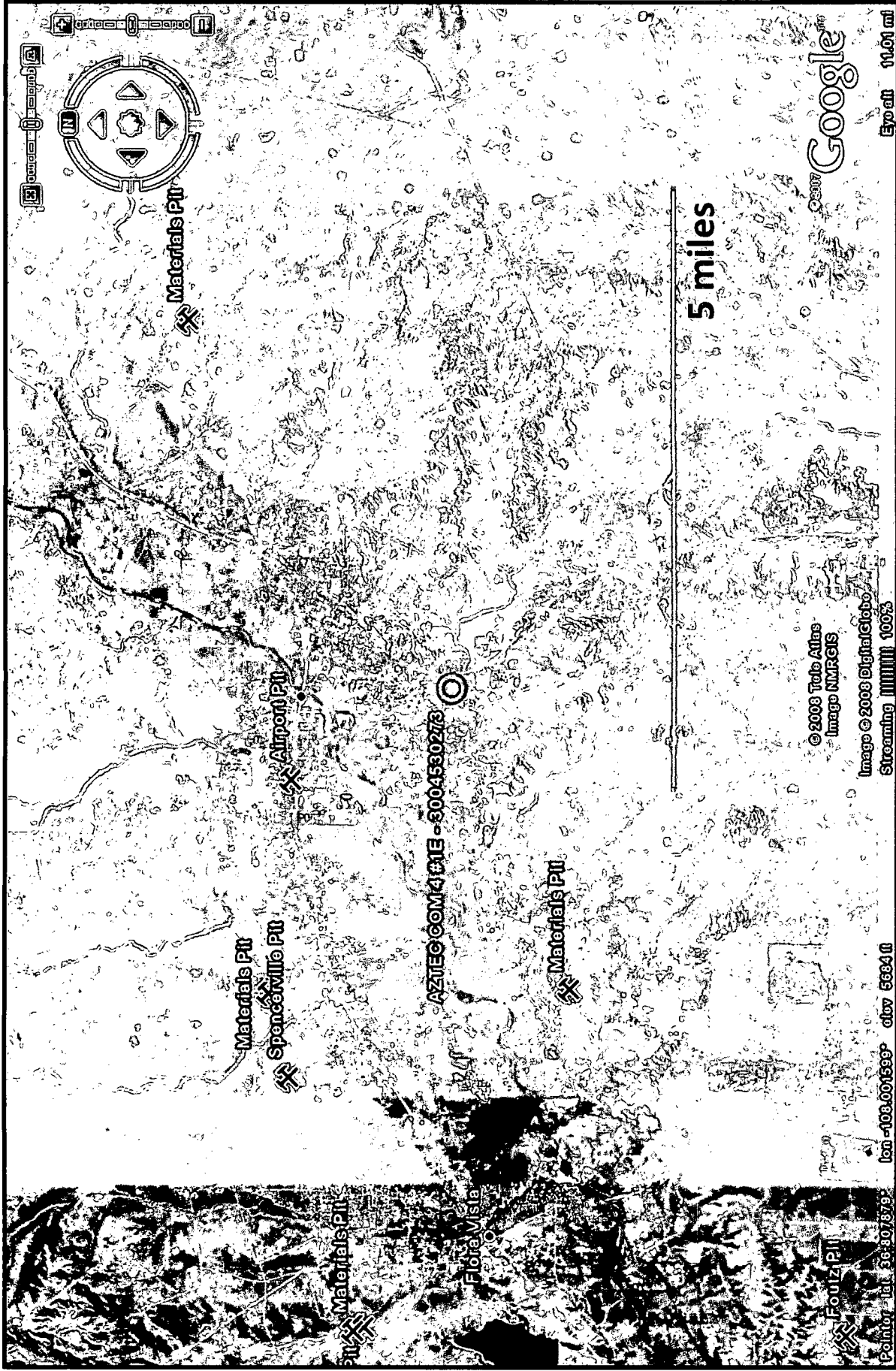
SJ 01401	30W	11W 18	1 3		44	12	32
SJ 03526	30W	11W 18	1 3 1		40		
SJ 03176	30W	11W 18	1 4 1		48	20	28
SJ 03177	30W	11W 18	1 4 2		37	15	22
SJ 03344	30W	11W 18	1 4 2		100	8	92
SJ 03801 POD1	30W	11W 18	2 2	266702 2116449	21	6	15
SJ 03800 POD1	30W	11W 18	2 2	266718 2116651	21	6	15
SJ 01639	30W	11W 18	2 2 2		40	18	22
SJ 02098	30W	11W 18	2 4		21	7	14
SJ 02109	30W	11W 18	2 4		19	4	15
SJ 02123	30W	11W 18	2 4		22	8	14
SJ 03290	30W	11W 18	2 4 4		40	10	30
SJ 02045	30W	11W 18	4		480	200	280
SJ 03322	30W	11W 18	4 4 1		40	10	30
SJ 03320	30W	11W 18	4 4 3		80		
SJ 03321	30W	11W 18	4 4 3		80		
SJ 02193	30W	11W 19	1 2 2		105		
SJ 03403	30W	11W 19	2 1		400	70	60
SJ 00638	30W	11W 19	2 1		100	38	62
SJ 01073	30W	11W 19	2 1 1		105	35	70
SJ 03615	30W	11W 19	2 1 4		140		
SJ 03434	30W	11W 19	2 1 4		120	80	40
SJ 03088	30W	11W 19	2 2 2		70	25	45
SJ 01636	30W	11W 19	2 2 3		20		
SJ 02862	30W	11W 19	2 4		200	35	165
SJ 00284	30W	11W 19	3 1 1		60	20	40
SJ 03645	30W	11W 19	3 1 3		20		
SJ 03533	30W	11W 19	3 2 2		40	38	2
SJ 01621	30W	11W 19	3 2 2		52	12	40
SJ 02692	30W	11W 19	3 2 2		75	5	70
SJ 02968	30W	11W 19	3 2 2		50		
SJ 02812	30W	11W 19	4 1		40	15	25
SJ 01123	30W	11W 19	4 1 2		30		
SJ 03437	30W	11W 19	4 1 2		60	54	6
SJ 03315	30W	11W 19	4 4		200	35	165
SJ 00284 CIN222415	30W	11W 30	1 2 4		80	30	50
SJ 03224	30W	11W 30	2 1 1		75	70	5
SJ 03077	30W	11W 30	2 1 2		380	230	100
SJ 03668	30W	11W 32	3 4 4		150	77	73
SJ 03251	30W						



Lodestar Services, Inc
PO Box 4465
Durango, CO 81302

AZTEC COM 4 #1E
T30N, R11W, S16M
San Juan County, NM

Aerial Photograph



Lodestar Services, Inc
PO Box 4465
Durango, CO 81302

AZTEC COM 4 #1E
T30N, R11W, S16M
San Juan County, NM

Mines, Mills, and
Quarries Map

XTO Energy Inc.
San Juan Basin (Northwest New Mexico)
General Closure Plan
For Below-Grade Tanks

In accordance with Rule 19.15.17.13 NMAC the following information describes the closure requirements of below-grade tanks on XTO Energy Inc. (XTO) locations. This is XTO's standard procedure for all below-grade tanks. A separate plan will be submitted for any below-grade tank which does not conform to this plan.

General Plan

1. XTO will close below-grade tanks within the time periods provided in 19.15.17.13 NMAC, or by an earlier date that the division requires because of imminent danger to fresh water, public health or the environment.
2. XTO will close a below-grade tank that does not meet the requirements of Paragraphs (1) through (4) of Subsection I of 19.15.17.11 NMAC or is not included in Paragraph (5) of Subsection I of 19.15.17.11 NMAC within five years after June 16, 2008, if not retrofitted to comply with Paragraphs (1) through (4) of Subsection I of 19.15.17.11 NMAC.
3. XTO will close a permitted below-grade tank within 60 days of cessation of the below-grade tank's operation or as required by the transitional provisions of Subsection B of 19.15.17.17 NMAC in accordance with a closure plan that the appropriate division district office approves. The closure report will be filed on form C-144.
4. XTO will remove liquids and sludge from below-grade tanks prior to implementing a closure method and will dispose of the liquids and sludge in a division-approved facility. Approved facilities and waste streams include:
 - Envirotech Permit No. NM01-0011 and IEI Permit No. NM 01-0010B
 - Soil contaminated by exempt petroleum hydrocarbons
 - Produced sand, pit sludge and contaminated bottoms from storage of exempt wastes
 - Basin Disposal Permit No. NM01-005
 - Produced water
5. XTO will remove the below-grade tank and dispose of it in a division approved facility or recycle, reuse, or reclaim it in a manner that the appropriate division district office has approved prior to removal. Any associated liners will be removed, properly cleaned and disposed of per 19.15.9.712 NMAC at San Juan County Landfill. Documentation of the final disposition will be included in the closure report.
6. XTO will remove any on-site equipment associated with a below-grade tank unless the equipment is required for some other purpose.
7. XTO will test the soils beneath the below-grade tank to determine whether a release has occurred. At a minimum 5 point composite sample will be collected along with individual grab samples from any area that is wet, discolored or showing other evidence of a release. Samples will be

analyzed for BTEX, TPH and chlorides to demonstrate that the benzene concentration, as determined by EPA SW-846 methods 8021B or 8260B or EPA method that the division approves, does not exceed 0.2 mg/kg; total BTEX concentration, as determined by EPA SW-846 methods 8021B or 8260B or other EPA method that the division approves, does not exceed 50 mg/kg; the TPH concentration, as determined by EPA method 418.1 or other EPA method that the division approves, does not exceed 100mg/kg; and the chloride concentration, as determined by EPA method 300.1 or other EPA method that the division approves, does not exceed 250 mg/kg, or the background concentration, whichever is greater. XTO will notify the division of its results on form C-141.

8. If XTO or the division determines that a release has occurred, XTO will comply with 19.15.3.116 NMAC and 19.15.1.19NMAC as appropriate.
9. If the sampling program demonstrates that a release has not occurred or that any release does not exceed the concentrations specified in Paragraph (4) of Subsection E of 19.15.17.13 NMAC, XTO will backfill the excavation with compacted, non-waste containing, earthen material; construct a division prescribed soil cover; recontour and re-vegetate the site.
10. Notice of Closure operations will be given to the Aztec Division District III office between 72 hours and one week prior to the start of closure activities via email or verbally.
The notification will include the following:
 - i. Operator's name
 - ii. Well Name and API Number
 - iii. Location by Unit Letter, Section, Township, and Range

The surface owner shall also be notified prior to the implementation of any closure operations of below-grade tanks as per the approved closure plan using certified mail, return receipt requested.

11. Re-contouring of location will match fit, shape, line, form and texture of the surrounding area. Re-shaping will include drainage control, prevent ponding, and prevent erosion. Natural drainages will be unimpeded and water bars and/or silt traps will be placed in areas where needed to prevent erosion on a large scale. Final re-contour shall have a uniform appearance with smooth surface, fitting the natural landscape.
12. A minimum of 4 feet of cover shall be achieved and the cover shall include 1 foot of suitable material to establish vegetation at the site, or the background thickness of topsoil, whichever is greater. Soil cover will be constructed to the site's existing grade and ponding of water and erosion of the cover material will be prevented with drainage control, natural drainages and silt traps where needed.
13. XTO will seed the disturbed areas the first growing season after the operator closes the pit. Seeding will be accomplished via drilling on the contour whenever practical or by other division-approved methods. BLM or Forest Service stipulated seed mixes will be used on federal lands. Vegetative cover will equal 70% of the native perennial vegetative cover (un-impacted) consisting of at least three native plant species, including at least one grass, but not including noxious weeds, and maintain that cover through two successive growing seasons. Repeat seeding or planting will be continued until successful vegetative growth occurs.

XTO Energy Inc.
San Juan Basin (Northwest New Mexico)
General Closure Plan
For Below-Grade Tanks
Page 3

14. All closure activities will include proper documentation and be available for review upon request and will be submitted in closure report form to OCD within 60 days of closure of the below-grade tank. Closure report will be filed on form C-144 and incorporate the following:
 - i. Proof of closure notice to division and surface owner;
 - ii. Details on capping and covering, where applicable;
 - iii. Inspection reports;
 - iv. Confirmation sampling analytical results;
 - v. Disposal facility name(s) and permit number(s);
 - vi. Soil backfilling and cover installation;
 - vii. Re-vegetation application rates and seeding techniques, (or approved alternative to re-vegetation requirements if applicable);
 - viii. Photo documentation of the site reclamation.

XTO Energy Inc.
San Juan Basin (Northwest New Mexico)
General Design and Construction Plan
For Below-Grade Tanks

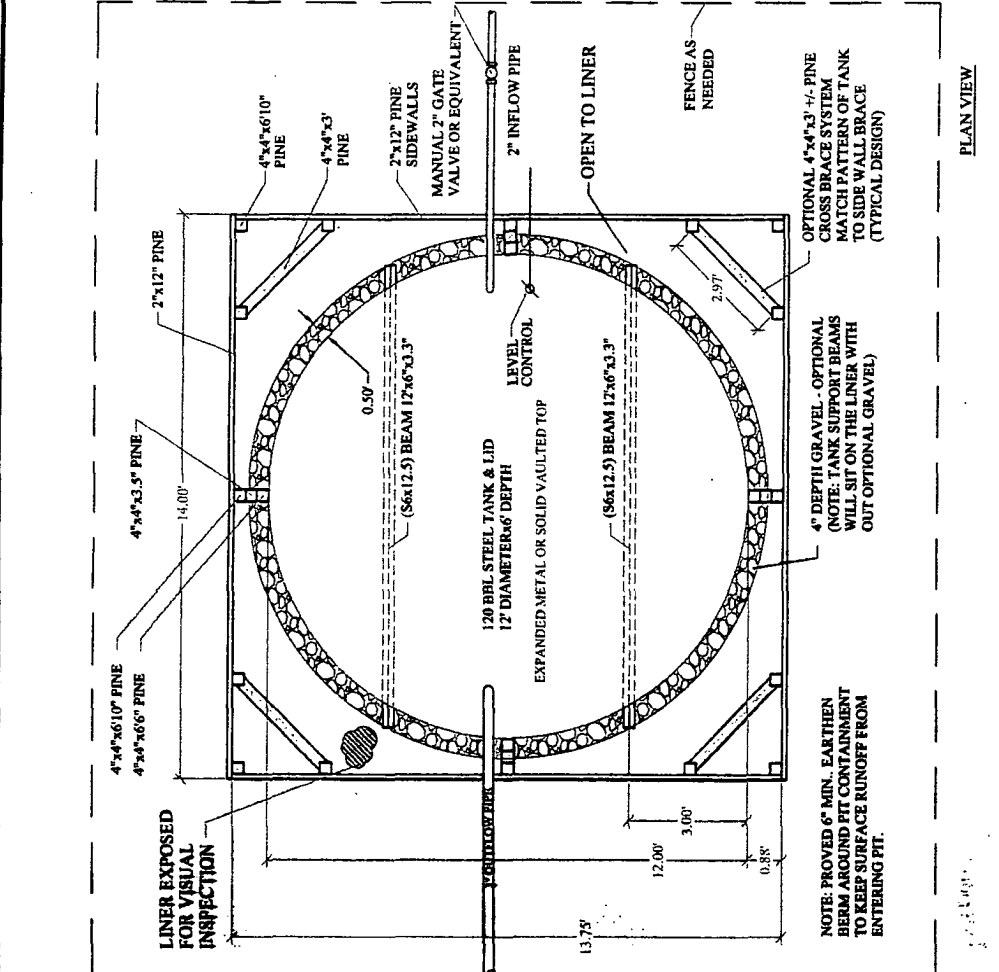
In accordance with Rule 19.15.17.11 NMAC the following information describes the design and construction of below-grade tanks on XTO Energy Inc. (XTO) locations. This is XTO's standard procedure for all below-grade tanks. A separate plan will be submitted for any below-grade tank which does not conform to this plan.

General Plan

1. XTO will design and construct below-grade tanks to contain liquids and solids and prevent contamination of fresh water and protect public health and environment.
2. XTO will post a well sign, in compliance with 19.15.3.103 NMAC, on the existing well site operated by XTO where the existing below-grade tank is located. The sign will list the Operator on record as the operator, the location of the well site by unit letter, section, township, range, and emergency telephone numbers.
3. XTO is requesting approval of an alternative fencing to be used on below-grade tank locations. Below-grade tank locations will be fenced utilizing 48" steel mesh field-fence (hogwire) with pipe railing along the top. A 6' chain link fence will be utilized around the well pad if the well site is within a city limits or ¼ mile of a permanent residence, school, hospital, institution or church. Below-grade tanks located within 1000' of a permanent residence, school, hospital, institution or church will be fenced by 6' chain link fence with at least two strands of barbed wire at the top. All gates associated with below-grade tanks will remain closed and locked when responsible individuals are not on site.
4. XTO shall construct below-grade tanks with an expanded metal covering or solid vaulted top on the top of the below-grade tank.
5. XTO will ensure that below-grade tanks are constructed of materials resistant to the below-grade tank's particular contents and resistant to damage from sunlight. Tanks will be constructed of A36 carbon steel with 3/16" sides and ¼" bottom. (See attached drawing).
6. The below-grade tank system will have a properly constructed foundation consisting of a level base free of rocks, debris, sharp edges or irregularities to prevent punctures, cracks or indentations of the liner or tank bottom. Sand bedding (4") will be placed on top of a level foundation to ensure prevention of punctures, cracks or indentations of the liner or tank bottom.
7. XTO will construct a berm and/or diversion ditch in a manner that prevents the collection of surface water run-on. Below-grade tanks will be equipped with automatic high level shut-off devices as well as manually operated shut-off valves. (See attached drawing).
8. XTO will construct and use below-grade tanks that do not have double walls. The below-grade tank sidewalls will be open for visual inspection for leaks. The sidewalls of the cellar will be constructed with 2" X 12" pine sidewalls and 4" X 4" pine brace posts. The below-grade tank

bottom will be elevated a minimum of 6" above the underlying ground surface and the below-grade tank will be underlain with a geomembrane liner to divert leaked liquid to a location that can be visually inspected. (See attached drawing).

9. XTO will equip below-grade tanks designed in this manner with a properly functioning automatic high-level shut-off control device and manual controls to prevent overflows. (See attached drawing).
10. XTO will demonstrate to the OCD that the geomembrane liner complies with the specifications of Subparagraph (a) of Paragraph (4) of Subsection I of 19.15.17.11 NMAC and obtain approval from OCD prior to the installation of the design. The geomembrane liner shall have a hydraulic conductivity no greater than 1×10^{-9} cm/sec. The geomembrane liner shall be composed of an impervious, synthetic material that is resistant to petroleum hydrocarbons, salts and acids and alkaline solutions. The liner material shall be resistant to ultraviolet light. Liner compatibility shall comply with EPA SW-846 method 9090A. (See attached drawing).
11. The general specifications for design and construction are attached.



ADJUST DIMENSIONS AS NEEDED TO FIELD FIT TANK IF DIFFERENT THAN SHOWN, IF REQUIRED.



PROJ. NUMBER 60-0132	DRAWING NUMBER XTO PIT TANK	SCALE AS SHOWN	APPROVED 
-------------------------	--------------------------------	-------------------	---

XTO Energy Inc.
San Juan Basin (Northwest New Mexico)
General Maintenance and Operating Plan
For Below-Grade Tanks

In accordance with Rule 19.15.17.12 NMAC the following information describes the operation and maintenance of below-grade tanks on XTO Energy Inc. (XTO) locations. This is XTO's standard procedure for all below-grade tanks. A separate plan will be submitted for any below-grade tank which does not conform to this plan.

General Plan

1. XTO will operate and maintain below-grade tanks to contain liquids and solids, maintain the integrity of the liner and secondary containment system, prevent contamination of fresh water and protect public health and the environment. Fluid levels will be monitored weekly and high levels will be removed as necessary. Monthly inspections will be conducted to monitor integrity of below-grade tank systems and below-grade tanks will be equipped with automatic high-level shut-off devices.
2. XTO will not allow below-grade tanks to overflow and will use berms and/or diversion ditch to prevent surface run on to enter the below-grade tank. Below-grade tanks will be equipped with automatic high-level shut-off control devices as well as manually operated shut-off valves. See attached drawing for vault design and placement of diversion berms and shut-off devices.
3. XTO will continuously remove any visible or measurable layer of oil from the fluid surface of below-grade tanks in order to prevent significant accumulation of oil.
4. XTO will inspect the below-grade tank monthly and maintain written records for five years. Monthly inspections will consist of documenting the following: (see attached template),
 - Well Name
 - API #
 - Sec., Twn., Rng.
 - XTO Inspector's name
 - Inspection date and time
 - Visible tears in liner
 - Visible signs of tank overflow
 - Collection of surface run on
 - Visible layer of oil
 - Visible signs of tank leak
 - Estimated freeboard
5. XTO will maintain adequate freeboard to prevent over topping of the below-grade tank. High level shut-off devices control the freeboard at an average of 28" beneath the top of the tank.
6. XTO will not discharge into or store any hazardous waste in any below-grade tank.
7. If a below-grade tank develops a leak, or if any penetration of a below-grade tank occurs below the liquids surface, XTO will remove all liquids above the damage or leak line within 48 hours,

XTO Energy Inc.
San Juan Basin (Northwest New Mexico)
General Maintenance and Operating Plan
For Below-Grade Tanks
Page 2

notify the appropriate division district office within 48 hours of the discovery and repair the damage or replace the below-grade tank. If an existing below-grade tank does not meet current requirements of Paragraphs 1-4 of Subsection I of 19.15.17.11 NMAC the tank will be modified or retrofitted to comply. If compliance can not be achieved XTO will implement the approved closure plan.

MONTHLY BELOW GRADE TANK INSPECTION FORM

Well Name:

API No.:

Legals

Sec:

Township:

Range:

[illegible]

Notes:

Provide Detailed Description:

Misc: