

District I  
1625 N. French Dr., Hobbs, NM 88240  
District II  
1301 W. Grand Avenue, Artesia, NM 88210  
District III  
1000 Rio Brazos Rd., Aztec, NM 87410  
District IV  
1220 S. St. Francis Dr., Santa Fe, NM 87505

Oil Conservation Division  
1220 S. St. Francis Dr.  
Santa Fe, NM 87505

Submit to appropriate District Office

AMENDED REPORT

**APPLICATION FOR PERMIT TO DRILL, RE-ENTER, DEEPEN, PLUGBACK, OR ADD A ZONE**

<sup>1</sup> Operator Name and Address OXY USA Inc. P.O. Box 50250 Midland, TX 79710-0250		<sup>2</sup> OGRID Number 16696
<sup>4</sup> Property Code 27111	<sup>5</sup> Property Name Bravo Dome Carbon Dioxide Gas Unit 2035	<sup>3</sup> API Number 30-059-20472
<sup>9</sup> Proposed Pool 1 Bravo Dome Carbon Dioxide Gas 640		<sup>6</sup> Well No. 322
96010		<sup>10</sup> Proposed Pool 2

<sup>7</sup>Surface Location

UL or lot no.	Section	Township	Range	Lot. Idn	Feet from the	North/South Line	Feet from the	East/West line	County
J	32	20 N	35 E		1650	South	1650	East	Union

<sup>8</sup>Proposed Bottom Hole Location If Different From Surface

UL or lot no.	Section	Township	Range	Lot. Idn	Feet from the	North/South Line	Feet from the	East/West line	County

Additional Well Location


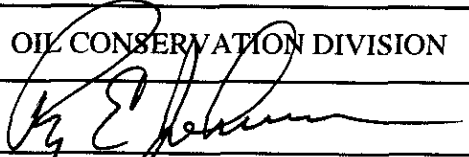
<sup>11</sup> Work Type Code N	<sup>12</sup> Well Type Code C	<sup>13</sup> Cable/Rotary R	<sup>14</sup> Lease Type Code P	<sup>15</sup> Ground Level Elevation 4695.2'
<sup>16</sup> Multiple No	<sup>17</sup> Proposed Depth 2600'	<sup>18</sup> Formation Tubb	<sup>19</sup> Contractor N/A	<sup>20</sup> Spud Date 5/1/06
Depth to ground water >100'		Distance from nearest fresh water well >1000'		Distance from nearest surface water >1000'
Pit: Liner: Synthetic <input checked="" type="checkbox"/> 12 mils thick Clay <input type="checkbox"/> Pit Volume 4000 bbls Drilling Method:				
Closed-Loop System <input type="checkbox"/>		Fresh Water <input checked="" type="checkbox"/>		Brine <input type="checkbox"/> Diesel/Oil-based <input type="checkbox"/> Gas/Air <input type="checkbox"/>

<sup>21</sup>Proposed Casing and Cement Program

Hole Size	Casing Size	Casing weight/foot	Setting Depth	Sacks of Cement	Estimated TOC
12-1/4"	8-5/8"	24#	700'	300sx	Surface
7-7/8"	5-1/2"	15.5#	2600'	300sx	Surface

<sup>22</sup> Describe the proposed program. If this application is to DEEPEN or PLUG BACK, give the data on the present productive zone and proposed new productive zone. Describe the blowout prevention program, if any. Use additional sheets if necessary.

See Attachment

<sup>23</sup> I hereby certify that the information given above is true and complete to the best of my knowledge and belief. I further certify that the drilling pit will be constructed according to NMOCD guidelines <input checked="" type="checkbox"/> a general permit <input type="checkbox"/> , or an (attached) alternative OCD-approved plan <input type="checkbox"/> . Signature: 	OIL CONSERVATION DIVISION	
	Approved by: 	Title: DISTRICT SUPERVISOR
Printed name: David Stewart	Approval Date: 3/13/06	Expiration Date: 3/13/07
Title: Sr. Regulatory Analyst	E-mail Address: david.stewart@oxy.com	
Date: 3/13/06	Phone: 432-685-5717	Conditions of Approval: Attached <input type="checkbox"/>

**ATTACHMENT C-101**  
**BDCDGU**

**PROPOSED TD:** 2600' TVD

**BOP PROGRAM:** 0-700' None  
700-2600' 8" 2M annular hydril preventer.

**CASING:** Surface: 8-5/8" OD 24# J55 8rd ST&C new casing set at 700'  
12-1/4" hole  
Centralizers from TD-Surf, every fourth joint  
Production: 5-1/2" OD 15.5# J55 8rd LTC new casing from 0-2600'  
7-7/8" hole - 5 centralizers

**CEMENT:** Surface - Circulate cement with 300sx Premium Plus with 2% CaCl<sub>2</sub> +  
.25#/sx Poly E Flake, (WT-14.8ppg, Yld-1.34cf/sx, FW-6.3g/sx)  
Production - Cement with 150sx Premium Plus with 3% CaCl<sub>2</sub> + .25#/sx  
Poly E Flake, (WT-11.1ppg, Yld-3.27cf/sx, FW-20.47g/sx)  
followed by 150sx Premium Plus with 3% CaCl<sub>2</sub> + .25#/sx Poly E  
Flake, (WT-13.2ppg, Yld-1.86cf/sx, FW-9.93g/sx)

**MUD:** 0-700' Fresh water/native mud.  
Wt 8.6-9.2ppg, Vis 32-36sec  
700-2600' Fresh water/Starch/Gel  
pH control as needed.  
Wt 9.0-9.2ppg, Vis 28-29sec

District I  
1625 N. French Dr., Hobbs, NM 88240

District II  
811 South First, Artesia, NM 88210

District III  
1000 Rio Brazos Rd., Aztec, NM 87410

District IV  
2040 South Pacheco, Santa Fe, NM 87505

State of New Mexico  
Energy, Minerals & Natural Resources Department

OIL CONSERVATION DIVISION  
2040 South Pacheco  
Santa Fe, NM 87505

Form C-102

Revised October 18, 1994

Instructions on back

Submit to Appropriate District Office

State Lease - 4 Copies

Fee Lease - 3 Copies

AMENDED REPORT

WELL LOCATION AND ACREAGE DEDICATION PLAT

API Number <b>30-059-</b>	Pool Code <b>96010</b>	Pool Name <b>BRAVO DOME CARBON DIOXIDE GAS</b>
Property Code <b>27111</b>	Property Name <b>BRAVO DOME CARBON DIOXIDE GAS UNIT 2035</b>	Well Number <b>322</b>
OGRID No. <b>16696</b>	Operator Name <b>OXY USA INC.</b>	Elevation <b>4695.2</b>

Surface Location

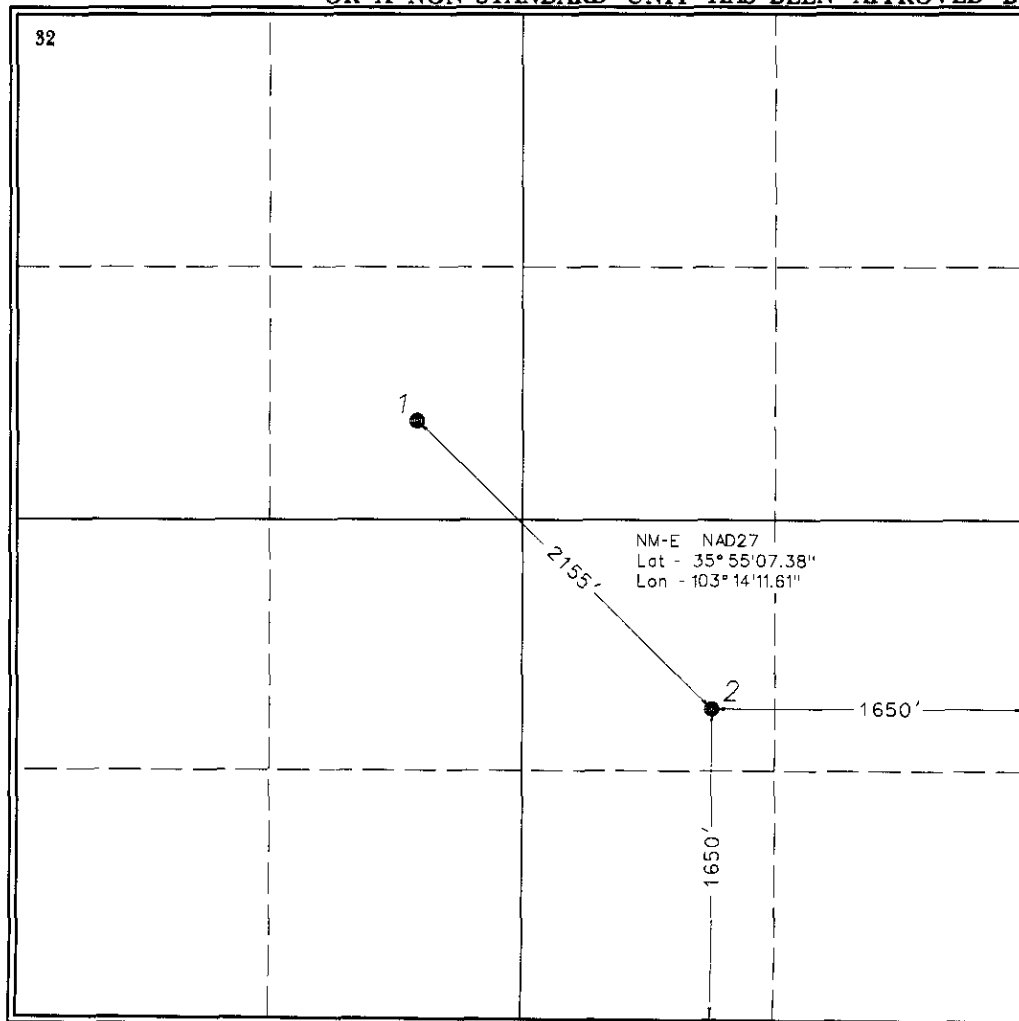
UL or lot no.	Section	Township	Range	Lot Idn.	Feet from the	North/South line	Feet from the	East/West line	County
<b>J</b>	<b>32</b>	<b>20 N</b>	<b>35 E</b>		<b>1650'</b>	<b>SOUTH</b>	<b>1650'</b>	<b>EAST</b>	<b>UNION</b>

Bottom Hole Location If Different From Surface

UL or lot no.	Section	Township	Range	Lot Idn.	Feet from the	North/South line	Feet from the	East/West line	County

Dedicated Acres <b>640</b>	Joint or Infill <b>Y</b>	Consolidation Code	Order No.
-------------------------------	-----------------------------	--------------------	-----------

NO ALLOWABLE WILL BE ASSIGNED TO THIS COMPLETION UNTIL ALL INTERESTS HAVE BEEN CONSOLIDATED OR A NON-STANDARD UNIT HAS BEEN APPROVED BY THE DIVISION



OPERATOR CERTIFICATION

I hereby certify that the information contained herein is true and complete to the best of my knowledge and belief.

*David Stewart*  
Signature

David Stewart

Sr. Regulatory Analyst  
Title

3/3/06  
Date

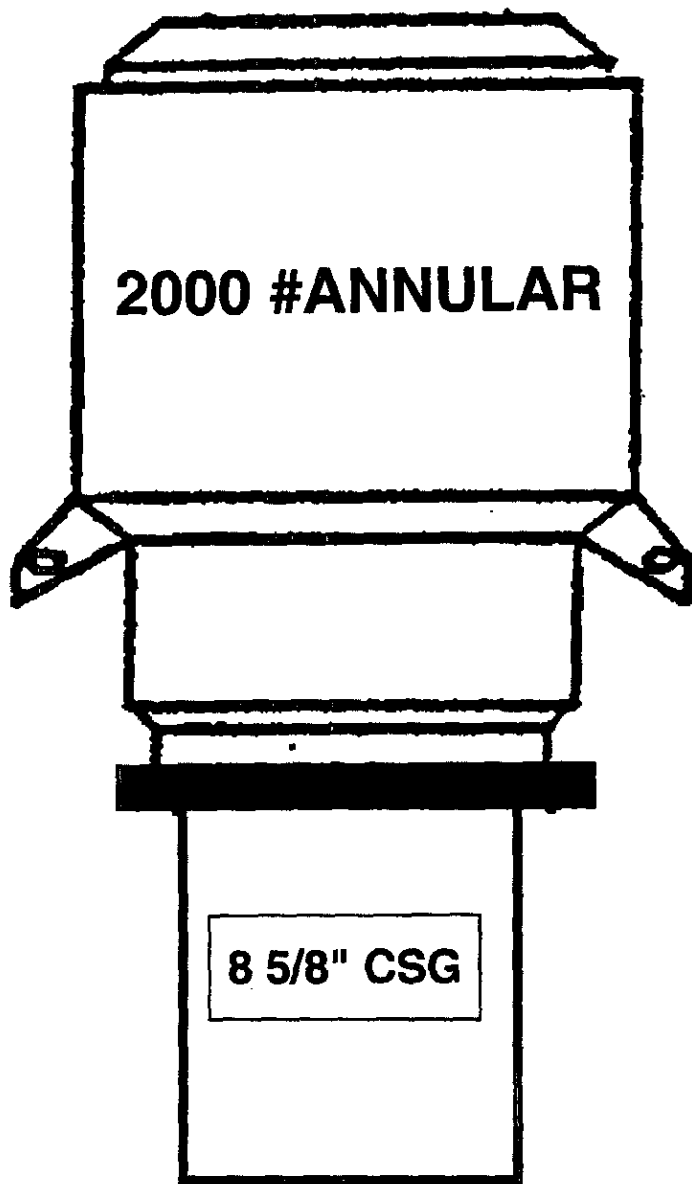
SURVEYOR CERTIFICATION

I hereby certify that the well location shown on this plat was plotted from field notes of actual surveys made by me or under my supervision, and that the same is true and correct to the best of my belief.

February 24, 2006  
Date of Survey

*Terry Asel*  
Signature and Seal of Professional Surveyor  
15079

Terry Asel  
Certificate Number 15079



**BRAVO DOME 2003 DRILLING PROJECT BOP DIAGRAM**

