

District I
1625 N. French Dr., Hobbs, NM 88240
District II
811 South First, Artesia, NM 88210
District III
1000 Rio Brazos Road, Aztec, NM 87410
District IV
1220 South St Francis, NM 87505

State of New Mexico
Energy Minerals and Natural Resources

Form C-101
Revised March 17, 1999

Oil Conservation Division
1220 South St Francis
Santa Fe, NM 87505

Submit to appropriate District Office
State Lease - 6 Copies
Fee Lease - 5 Copies

☐ AMENDED REPORT

APPLICATION FOR PERMIT TO DRILL, RE-ENTER, DEEPEN, PLUGBACK, OR ADD A ZONE

¹ Operator Name and Address El Paso Energy Raton, L.L. C. P.O. Box 190 Raton, NM 87740		² OGRID Number 180514
		³ API Number 30-007- 20433
³ Property Code 24648	⁵ Property Name Vermejo Park Ranch (VPR)	⁶ Well No. VPR A-119

⁷ Surface Location

UL or lot no.	Section	Township	Range	Lot Idn	Feet from the	North/South line	Feet from the	East/West line	County
H	16	31N	20E	H	1547	North	1183	East	Colfax

⁸ Proposed Bottom Hole Location If Different From Surface

UL or lot no.	Section	Township	Range	Lot Idn	Feet from the	North/South line	Feet from the	East/West line	County
⁹ Proposed Pool 1 Vermejo					¹⁰ Proposed Pool 2 Raton				

¹¹ Work Type Code N	¹² Well Type Code G	¹³ Cable/Rotary ROTARY/AIR	¹⁴ Lease Type Code P	¹⁵ Ground Level Elevation 8100' (GL)
¹⁶ Multiple No	¹⁷ Proposed Depth 2,600'	¹⁸ Formation Trinidad	¹⁹ Contractor Not Available	²⁰ Spud Date July 30, 2003

²¹ Proposed Casing and Cement Program

Hole Size	Casing Size	Casing weight/foot	Setting Depth	Sacks of Cement	Estimated TOC
11"	8 5/8"	23#	330'	100 sx.	SURFACE
7 7/8"	5 1/2	15.50#	2,600'	260 sx.	SURFACE

22 Describe the proposed program. If this application is to DEEPEN or PLUG BACK, give the data on the present productive zone and proposed new productive zone. Describe the blowout prevention program, if any. Use additional sheets if necessary.

1. Drill 11" hole to +/- 330' with air.
2. Set 8 5/8" surface casing and cement to surface with 100 sks of cement.
3. Drill 7 7/8" hole to 2,600' with air. Run open hole logs.
4. Set 5 1/2" production casing to TD and cement to surface. Cement volumes calculated from open hole logs.
5. Perforate and stimulate Vermejo and/or Raton Coals. Clean out wellbore and run production equipment.

23 I hereby certify that the information given above is true and complete to the best of my knowledge and belief.

Signature: DR Lankford

Printed name: Donald R. Lankford

Title: Principal Engineer

Date: 07-23-03

Phone: (505) 445-6721

OIL CONSERVATION DIVISION

Approved by: [Signature]

Title: **DISTRICT SUPERVISOR**

Approval Date: 7/24/03

Expiration Date: 7/24/04

Conditions of Approval:

Attached ☐

District I
1625 N. French Dr., Hobbs, NM 88240
District II
1301 W. Grand Avenue, Artesia, NM 88210
District III
1000 Rio Brazos Rd., Aztec, NM 87410
District IV
1220 S. St. Francis Dr., Santa Fe, NM 87505

State of New Mexico
Energy, Minerals & Natural Resources Department
OIL CONSERVATION DIVISION
1220 South St. Francis Dr.
Santa Fe, NM 87505

Form C-102
Revised August 15, 2000
Submit to Appropriate District Office
State Lease - 4 Copies
Fee Lease - 3 Copies

☐ AMENDED REPORT

WELL LOCATION AND ACREAGE DEDICATION PLAT

¹ API Number		² Pool Code 96970	³ Pool Name STUBBLEFIELD CANYON - VERMEJO GAS
⁴ Property Code 24648	⁵ Property Name VERMEJO PARK RANCH		⁶ Well Number VPR'A'-119
⁷ OGRID No. 180514	⁸ Operator Name EL PASO ENERGY RATON, L.L.C.		⁹ Elevation 8100' ±

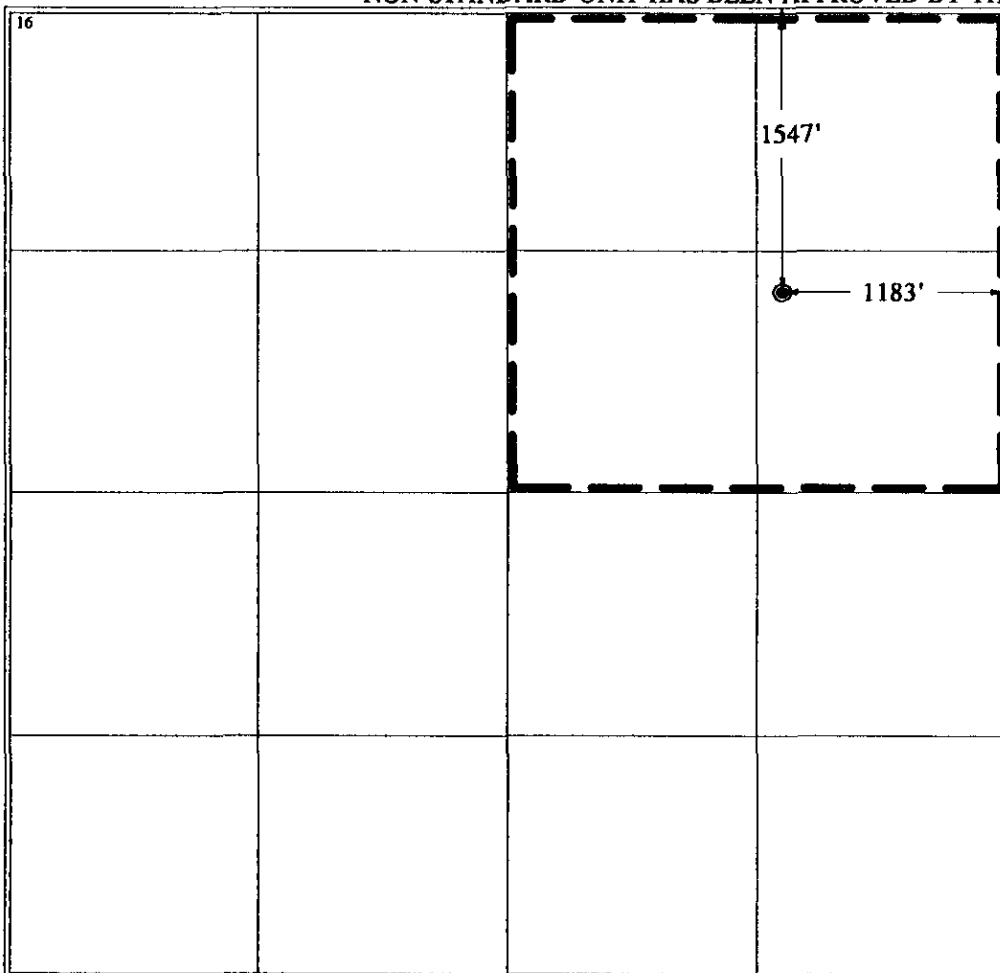
¹⁰ Surface Location

UL or lot no. H	Section 16	Township 31 N	Range 20 E	Lot Idn H	Feet from the 1547	North/South line NORTH	Feet from the 1183	East/West line EAST	County COLFAX
--------------------	---------------	------------------	---------------	--------------	-----------------------	---------------------------	-----------------------	------------------------	------------------

¹¹ Bottom Hole Location If Different From Surface

UL or lot no.	Section	Township	Range	Lot Idn	Feet from the	North/South line	Feet from the	East/West line	County
¹² Dedicated Acres		¹³ Joint or Infill	¹⁴ Consolidation Code		¹⁵ Order No.				

NO ALLOWABLE WILL BE ASSIGNED TO THIS COMPLETION UNTIL ALL INTERESTS HAVE BEEN CONSOLIDATED OR A NON-STANDARD UNIT HAS BEEN APPROVED BY THE DIVISION



¹⁷ OPERATOR CERTIFICATION

I hereby certify that the information contained herein is true and complete to the best of my knowledge and belief.

Signature

DR Lankford

Printed Name: DONALD R. LANKFORD

Title: SENIOR PETROLIUM ENGINEER

Date

¹⁸ SURVEYOR CERTIFICATION

I hereby certify that the well location shown on this plat was plotted from field notes of actual surveys made by me or under my supervision, and that the same is true and correct to the best of my belief.

July 21, 2003

Date of Survey

Signature and Seal of Professional Surveyor:

[Signature]
Certificate Number NM LS NO. 5103