

District I  
1625 N French Dr, Hobbs, NM 88240  
District II  
1301 W. Grand Avenue, Artesia, NM 88210  
District III  
4000 Rio Brazos Road, Aztec, NM 87410  
District IV  
1220 S. St. Francis Dr., Santa Fe, NM 87505

State of New Mexico  
Energy Minerals and Natural Resources

Form C-101  
May 27, 2004

Oil Conservation Division  
1220 South St. Francis Dr.  
Santa Fe, NM 87505

JUN 13 2007

Submit to appropriate District Office

☒ AMENDED REPORT

**APPLICATION FOR PERMIT TO DRILL, RE-ENTER, DEEPEN, PLUG BACK, OR ADD A ZONE**

|   |   |  |
|---|---|--|
| <sup>1</sup> Operator Name and Address<br><b>EL PASO E &amp; P COMPANY, L.P.<br/>PO BOX 190<br/>RATON, NM 87740</b> |   | <sup>2</sup> OGRID Number<br><b>180514</b>     |
|   |   | <sup>3</sup> API Number<br><b>30-007-20402</b> |
| <sup>4</sup> Property Code<br><b>25179</b>  | <sup>5</sup> Property Name<br><b>VERMEJO PARK RANCH (VPR)</b> | <sup>6</sup> Well No.<br><b>VPR D 114</b>      |
| <sup>9</sup> Proposed Pool 1<br><b>VERMEJO</b>  |   | <sup>10</sup> Proposed Pool 2<br><b>RATON</b>  |

**7 Surface Location**

| UL or lot no. | Section   | Township   | Range      | Lot Idn  | Feet from the | North/South line | Feet from the | East/West line | County        |
|---------------|-----------|------------|------------|----------|---------------|------------------|---------------|----------------|---------------|
| <b>D</b>      | <b>15</b> | <b>30N</b> | <b>17E</b> | <b>D</b> | <b>1188</b>   | <b>North</b>     | <b>1264</b>   | <b>West</b>    | <b>Colfax</b> |

**8 Proposed Bottom Hole Location If Different From Surface**

| UL or lot no. | Section   | Township   | Range      | Lot Idn  | Feet from the | North/South line | Feet from the | East/West line | County        |
|---------------|-----------|------------|------------|----------|---------------|------------------|---------------|----------------|---------------|
| <b>A</b>      | <b>16</b> | <b>30N</b> | <b>17E</b> | <b>A</b> | <b>526</b>    | <b>North</b>     | <b>413</b>    | <b>East</b>    | <b>Colfax</b> |

**Additional Well Information**

|   |   |   |   |   |
|---|---|---|---|---|
| <sup>11</sup> Work Type Code<br><b>N</b>  | <sup>12</sup> Well Type Code<br><b>G</b>                  | <sup>13</sup> Cable/Rotary<br><b>Rotary/Fluid</b> | <sup>14</sup> Lease Type Code<br><b>P</b> | <sup>15</sup> Ground Level Elevation<br><b>9,052'</b> |
| <sup>16</sup> Multiple<br><b>Yes</b>  | <sup>17</sup> Proposed Depth<br><b>2683' TVD 4750' MD</b> | <sup>18</sup> Formation<br><b>Lower Vermejo</b>   | <sup>19</sup> Contractor<br><b>Pense</b>  | <sup>20</sup> Spud Date<br><b>February 20, 2007</b>   |
| Depth to Groundwater  |   | Distance from nearest fresh water well            |   | Distance from nearest surface water                   |
| <b>Pit:</b> Liner: Synthetic <input type="checkbox"/> _____mils thick Clay <input type="checkbox"/> Pit Volume: _____bbls Drilling Method: <b>Rotary/Fluid</b><br>Closed-Loop System <input type="checkbox"/> Fresh Water <input type="checkbox"/> Brine <input type="checkbox"/> Diesel/Oil-based <input type="checkbox"/> Gas/Air <input checked="" type="checkbox"/> |   |   |   |   |

**21 Proposed Casing and Cement Program**

| Hole Size     | Casing Size   | Casing weight/foot | Setting Depth           | Sacks of Cement | Estimated TOC  |
|---------------|---------------|--------------------|-------------------------|-----------------|----------------|
| <b>11"</b>    | <b>8 5/8"</b> | <b>23#</b>         | <b>337'</b>             | <b>100 sx</b>   | <b>SURFACE</b> |
| <b>7 7/8"</b> | <b>5 1/2"</b> | <b>15.5#</b>       | <b>2874'</b>            | <b>380 sx</b>   | <b>SURFACE</b> |
| <b>4 3/4"</b> | <b>3 1/2"</b> | <b>9.3#</b>        | <b>2536' - 4750' MD</b> | <b>None</b>     | <b>Liner</b>   |

<sup>22</sup> Describe the proposed program. If this application is to DEEPEN or PLUG BACK, give the data on the present productive zone and proposed new productive zone. Describe the blowout prevention program, if any. Use additional sheets if necessary.

**(Change of Bottom Hole Location.)**

|   |                              |   |  |
|---|------------------------------|---|--|
| <sup>23</sup> I hereby certify that the information given above is true and complete to the best of my knowledge and belief. I further certify that the drilling pit will be constructed according to NMOCD guidelines <input type="checkbox"/> , a general permit <input type="checkbox"/> , or an (attached) alternative OCD-approved plan <input type="checkbox"/> . |                              | <b>OIL CONSERVATION DIVISION</b>                              |  |
| Printed name. <b>Shirley A. Mitchell</b> <i>Sam</i>   |                              | Approved by: <i>Ed Martin</i>                                 |  |
| Title: <b>Regulatory Analyst</b>  |                              | Title: <b>DISTRICT SUPERVISOR</b>                             |  |
| E-mail Address: <b>albert.o'neil@elpaso.com</b>   |                              | Approval Date: <b>6/25/07</b> Expiration Date: <b>6/25/08</b> |  |
| Date: <b>06/07/2007</b>   | Phone: <b>(505) 445-6785</b> | Conditions of Approval Attached <input type="checkbox"/>      |  |

District I  
1625 N. French Dr., Hobbs, NM 88240  
District II  
1301 W. Grand Avenue, Artesia, NM 88210  
District III  
1000 Rio Brazos Rd., Aztec, NM 87410  
District IV  
1220 S. St. Francis Dr., Santa Fe, NM 87505

State of New Mexico  
Energy, Minerals & Natural Resources Department  
**OIL CONSERVATION DIVISION**  
1220 South St. Francis Dr.  
Santa Fe, NM 87505

Form C-102  
Revised October 12, 2005  
Submit to Appropriate District Office  
State Lease - 4 Copies  
Fee Lease - 3 Copies

☒ AMENDED REPORT

**WELL LOCATION AND ACREAGE DEDICATION PLAT**

|                                     |  |   |  |  |  |
|-------------------------------------|--|---|--|--|--|
| <sup>1</sup> API Number             |  | <sup>2</sup> Pool Code<br>97046                         |  | <sup>3</sup> Pool Name<br>CASTLE ROCK PARK - VERMEJO GAS |  |
| <sup>4</sup> Property Code<br>25179 |  | <sup>5</sup> Property Name<br>VERMEJO PARK RANCH        |  |  | <sup>6</sup> Well Number<br>VPR'D'-114 |
| <sup>7</sup> OGRID No.<br>180514    |  | <sup>8</sup> Operator Name<br>EL PASO E&P Company, L.P. |  |  | <sup>9</sup> Elevation<br>9052'        |

<sup>10</sup> Surface Location

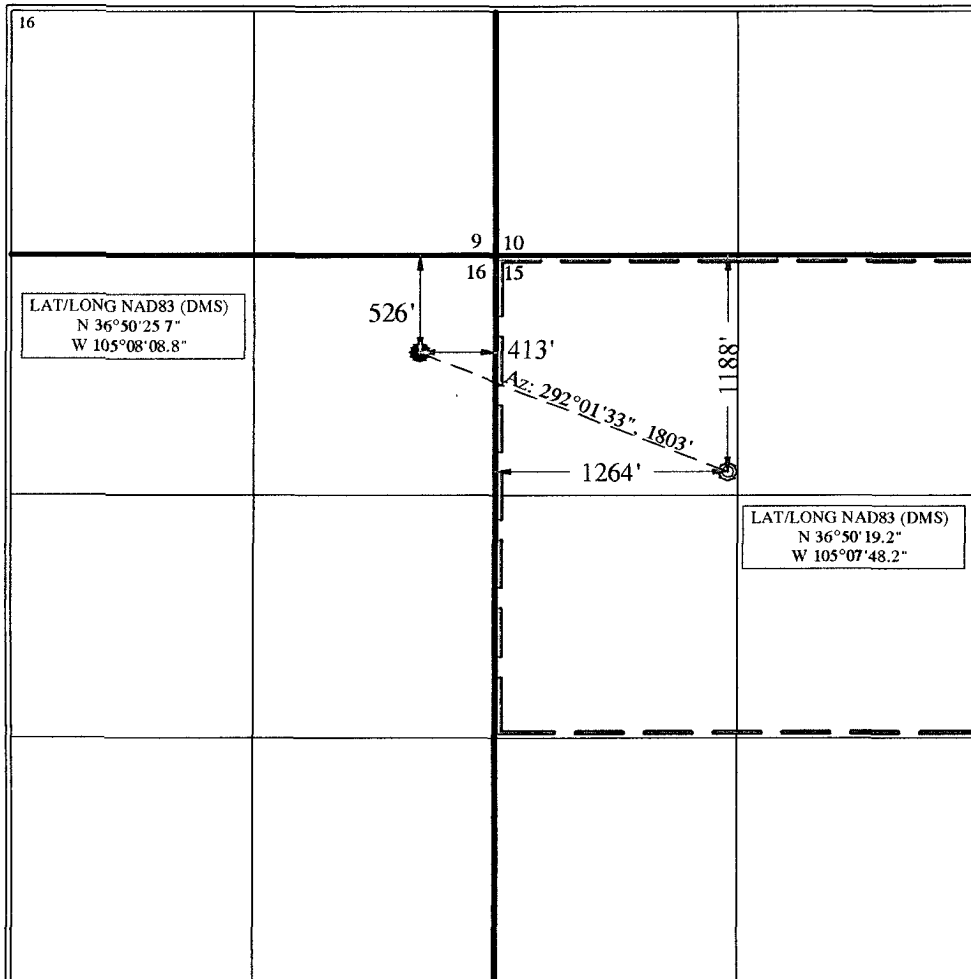
|                    |               |                    |                 |              |                       |                           |                       |                        |                  |
|--------------------|---------------|--------------------|-----------------|--------------|-----------------------|---------------------------|-----------------------|------------------------|------------------|
| UL or lot no.<br>D | Section<br>15 | Township<br>T 30 N | Range<br>R 17 E | Lot Idn<br>D | Feet from the<br>1188 | North/South line<br>NORTH | Feet from the<br>1264 | East/West line<br>WEST | County<br>COLFAX |
|--------------------|---------------|--------------------|-----------------|--------------|-----------------------|---------------------------|-----------------------|------------------------|------------------|

<sup>11</sup> Bottom Hole Location If Different From Surface

|                    |               |                    |                 |              |                      |                           |                      |                        |                  |
|--------------------|---------------|--------------------|-----------------|--------------|----------------------|---------------------------|----------------------|------------------------|------------------|
| UL or lot no.<br>A | Section<br>16 | Township<br>T 30 N | Range<br>R 17 E | Lot Idn<br>A | Feet from the<br>526 | North/South line<br>NORTH | Feet from the<br>413 | East/West line<br>EAST | County<br>COLFAX |
|--------------------|---------------|--------------------|-----------------|--------------|----------------------|---------------------------|----------------------|------------------------|------------------|

|                               |                               |                                  |                         |
|-------------------------------|-------------------------------|----------------------------------|-------------------------|
| <sup>12</sup> Dedicated Acres | <sup>13</sup> Joint or Infill | <sup>14</sup> Consolidation Code | <sup>15</sup> Order No. |
|-------------------------------|-------------------------------|----------------------------------|-------------------------|

NO ALLOWABLE WILL BE ASSIGNED TO THIS COMPLETION UNTIL ALL INTERESTS HAVE BEEN CONSOLIDATED OR A NON-STANDARD UNIT HAS BEEN APPROVED BY THE DIVISION



<sup>17</sup> OPERATOR CERTIFICATION

I hereby certify that the information contained herein is true and complete to the best of my knowledge and belief, and that this organization either owns a working interest or unleased mineral interest in the land including the proposed bottom hole location or has a right to drill this well at this location pursuant to a contract with an owner of such a mineral or working interest, or to a voluntary pooling agreement or a compulsory pooling order heretofore entered by the division.

Signature \_\_\_\_\_ Date \_\_\_\_\_

Printed Name \_\_\_\_\_

<sup>18</sup> SURVEYOR CERTIFICATION

I hereby certify that the well location shown on this plat was plotted from field notes of actual surveys made by me or under my supervision, and that the same is true and correct to the best of my belief.

May 30, 2007

Date of Survey

Signature and Seal of Professional Surveyor:

*Gu. Shilder*  
Certificate Number \_\_\_\_\_ NM LSN 5103