

District I  
1625 N. French Dr., Hobbs, NM 88240  
District II  
1301 W. Grand Avenue, Artesia, NM 88210  
District III  
1000 Rio Brazos Road, Aztec, NM 87410  
District IV  
1220 S. St. Francis Dr., Santa Fe, NM 87505

State of New Mexico  
Energy Minerals and Natural Resources

Form C-101  
May 27, 2004

Oil Conservation Division  
1220 South St. Francis Dr.  
Santa Fe, NM 87505

RECEIVED

Submit to appropriate District Office

☐ AMENDED REPORT

2008 APR 7 PM 3 38

APPLICATION FOR PERMIT TO DRILL, RE-ENTER, DEEPEN, PLUGBACK, OR ADD A ZONE

<sup>1</sup> Operator Name and Address <b>EL PASO E &amp; P COMPANY, L.P. PO BOX 190 RATON, NM 87740</b>		<sup>2</sup> OGRID Number <b>180514</b>
		<sup>3</sup> API Number <b>30-007-20959</b>
<sup>4</sup> Property Code <b>27521</b>	<sup>5</sup> Property Name <b>VERMEJO PARK RANCH (VPR)</b>	<sup>6</sup> Well No. <b>VPR E 17A</b>
<sup>9</sup> Proposed Pool 1 <b>DAKOTA</b>		<sup>10</sup> Proposed Pool 2 <b>NIOBRARA</b>

<sup>7</sup> Surface Location

UL or lot no.	Section	Township	Range	Lot Idn	Feet from the	North/South line	Feet from the	East/West line	County
<b>I</b>	<b>32</b>	<b>32N</b>	<b>19E</b>	<b>I</b>	<b>1499</b>	<b>South</b>	<b>1032</b>	<b>East</b>	<b>Colfax</b>

<sup>8</sup> Proposed Bottom Hole Location If Different From Surface

UL or lot no.	Section	Township	Range	Lot Idn	Feet from the	North/South line	Feet from the	East/West line	County
<b>XL</b>	<b>32</b>	<b>32N</b>	<b>19E</b>	<b>XL</b>	<b>2107</b>	<b>South</b>	<b>660</b>	<b>West</b>	<b>Colfax</b>

Additional Well Information

<sup>11</sup> Work Type Code <b>N</b>	<sup>12</sup> Well Type Code <b>G</b>	<sup>13</sup> Cable/Rotary <b>Rotary/Fluid</b>	<sup>14</sup> Lease Type Code <b>P</b>	<sup>15</sup> Ground Level Elevation <b>8,491'</b>
<sup>16</sup> Multiple <b>Yes</b>	<sup>17</sup> Proposed Depth <b>6,745' TVD</b>	<sup>18</sup> Formation <b>Niobrara</b>	<sup>19</sup> Contractor <b>Patterson 744</b>	<sup>20</sup> Spud Date <b>May 1, 2008</b>
Depth to Groundwater		Distance from nearest fresh water well		Distance from nearest surface water
Pit: Liner: Synthetic <input type="checkbox"/> _____mils thick Clay <input type="checkbox"/> Pit Volume: _____bbls Drilling Method: <b>Rotary/Fluid</b>				
Closed-Loop System <input type="checkbox"/> Fresh Water <input type="checkbox"/> Brine <input type="checkbox"/> Diesel/Oil-based <input type="checkbox"/> Gas/Air <input checked="" type="checkbox"/>				

<sup>21</sup> Proposed Casing and Cement Program

Hole Size	Casing Size	Casing weight/foot	Setting Depth	Sacks of Cement	Estimated TOC
<b>17.5"</b>	<b>13 3/8"</b>	<b>48#</b>	<b>350'</b>	<b>230 sks</b>	<b>SURFACE</b>
<b>12 1/4"</b>	<b>9 5/8"</b>	<b>40#</b>	<b>3,000'</b>	<b>580 sks</b>	<b>SURFACE</b>
<b>8 3/4"</b>	<b>7"</b>	<b>26#</b>	<b>6,745' TVD</b>	<b>730 sks</b>	<b>200' into 9 5/8" csg</b>
	<b>4 1/2" perf liner</b>	<b>11.6#</b>	<b>MD</b>	<b>No cement</b>	

<sup>22</sup> Describe the proposed program. If this application is to DEEPEN or PLUG BACK, give the data on the present productive zone and proposed new productive zone. Describe the blowout prevention program, if any. Use additional sheets if necessary.

1. MIRU Drill a 17.5" hole to 350'. Run 13 3/8" csg and cement with 230 sks cement to surface.
2. Drill a 12 1/4" hole to 3,000'. Run 9 5/8" csg, set at 3,000' and cement with 1,630 sks cement to surface.
3. Drill 8 3/4" hole to 6,745'.
4. Log with Triple combo, and Image log
5. Drill 6 1/8" lateral to 660' from opposing section line, 280 degree azimuth with 4 1/2' perf liner.
6. Plug back to KOP after logs.
6. Clean out well bore, run production equipment, and put well on production.

<sup>23</sup> I hereby certify that the information given above is true and complete to the best of my knowledge and belief. I further certify that the drilling pit will be constructed according to NMOC guidelines ☐, a general permit ☐, or an (attached) alternative OCD-approved plan ☐.

Printed name: **Alex Erhardt**  
Title: **Drilling Engineer**  
E-mail Address: **alex.erhardt@elpaso.com**

Date: **04/03/2008** Phone: **(303) 291-6443**

OIL CONSERVATION DIVISION

Approved by:

Title:

Approval Date:

Expiration Date:

Conditions of Approval Attached ☐

District I  
1625 N. French Dr., Hobbs, NM 88240  
District II  
1301 W. Grand Avenue, Artesia, NM 88210  
District III  
1000 Rio Brazos Rd., Aztec, NM 87410  
District IV  
1220 S. St. Francis Dr., Santa Fe, NM 87505

State of New Mexico  
Energy, Minerals & Natural Resources Department  
OIL CONSERVATION DIVISION  
1220 South St. Francis Dr.  
Santa Fe, NM 87505

Form C-102  
Revised October 12, 2005  
Submit to Appropriate District Office  
State Lease - 4 Copies  
Fee Lease - 3 Copies

☐ AMENDED REPORT

WELL LOCATION AND ACREAGE DEDICATION PLAT

<sup>1</sup> API Number 30-007-20959	<sup>2</sup> Pool Code 96970	<sup>3</sup> Pool Name STUBBLEFIELD CANYON RATON - VERMEJO GAS
<sup>4</sup> Property Code 27521	<sup>5</sup> Property Name VERMEJO PARK RANCH	<sup>6</sup> Well Number VPR E 17A
<sup>7</sup> OGRID No. 180514	<sup>8</sup> Operator Name EL PASO E&P Company, L.P.	<sup>9</sup> Elevation 8491'

<sup>10</sup> Surface Location

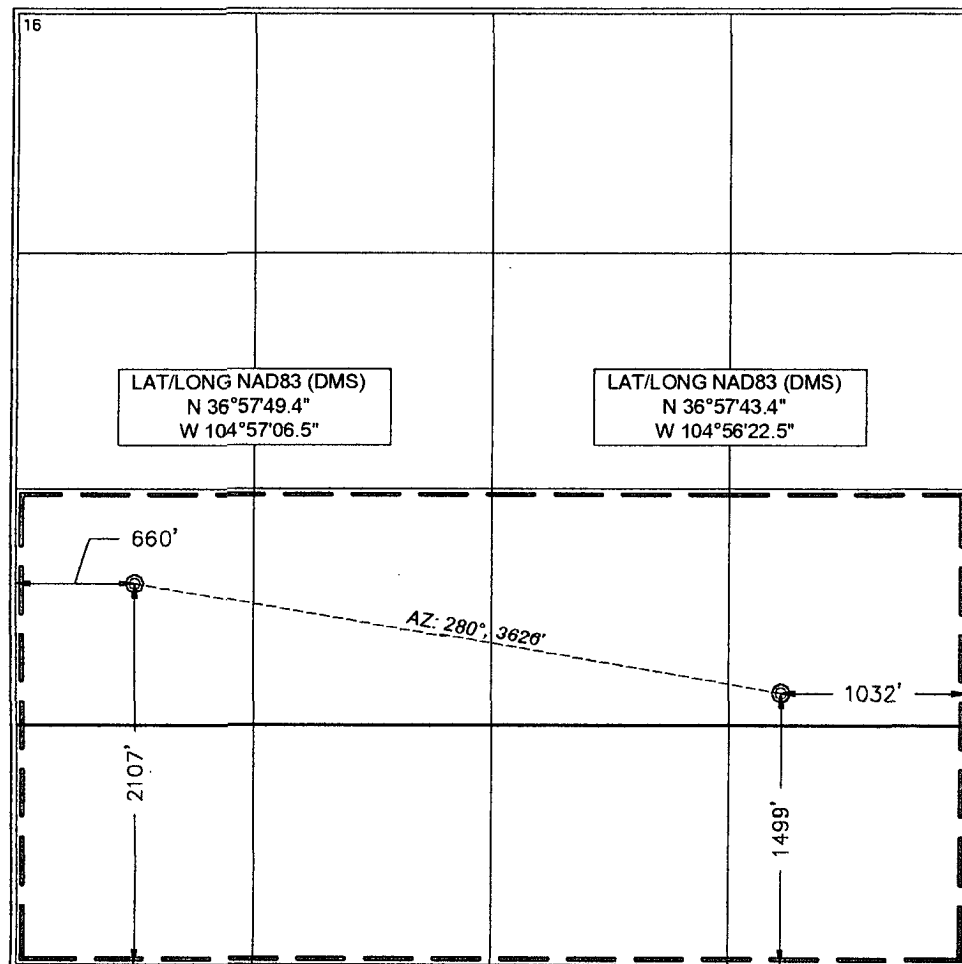
UL or lot no. I	Section 32	Township T 32 N	Range R 19 E	Lot Idn I	Feet from the 1499	North/South line SOUTH	Feet from the 1032	East/West line EAST	County COLFAX
--------------------	---------------	--------------------	-----------------	--------------	-----------------------	---------------------------	-----------------------	------------------------	------------------

<sup>11</sup> Bottom Hole Location If Different From Surface

UL or lot no. L	Section 32	Township T 32 N	Range R 19 E	Lot Idn L	Feet from the 2107	North/South line SOUTH	Feet from the 660	East/West line WEST	County COLFAX
--------------------	---------------	--------------------	-----------------	--------------	-----------------------	---------------------------	----------------------	------------------------	------------------

<sup>12</sup> Dedicated Acres	<sup>13</sup> Joint or Infill	<sup>14</sup> Consolidation Code	<sup>15</sup> Order No.
-------------------------------	-------------------------------	----------------------------------	-------------------------

NO ALLOWABLE WILL BE ASSIGNED TO THIS COMPLETION UNTIL ALL INTERESTS HAVE BEEN CONSOLIDATED OR A NON-STANDARD UNIT HAS BEEN APPROVED BY THE DIVISION



17 OPERATOR CERTIFICATION

I hereby certify that the information contained herein is true and complete to the best of my knowledge and belief, and that this organization either owns a working interest or unleased mineral interest in the land including the proposed bottom hole location or has a right to drill this well at this location pursuant to a contract with an owner of such a mineral or working interest, or to a voluntary pooling agreement or a compulsory pooling order heretofore entered by the division.

Signature \_\_\_\_\_ Date \_\_\_\_\_

Printed Name \_\_\_\_\_

18 SURVEYOR CERTIFICATION

I hereby certify that the well location shown on this plat was plotted from field notes of actual surveys made by me or under my supervision, and that the same is true and correct to the best of my belief.

April 3, 2008

Date of Survey \_\_\_\_\_

Signature and Seal of Professional Surveyor: \_\_\_\_\_

*Joe Shields*  
Certificate Number \_\_\_\_\_ NM LS NO. 5108