

District I  
1625 N. French Dr., Hobbs, NM 88240  
District II  
811 South First, Artesia, NM 88210  
District III  
1000 Rio Brazos Road, Aztec, NM 87410  
District IV  
1220 S. St Francis Dr., Santa Fe, NM 87505

State of New Mexico  
Energy Minerals and Natural Resources

Form C-101  
Revised March 17, 1999

Oil Conservation Division  
1220 South St. Francis Dr.  
Santa Fe, NM 87505

Submit to appropriate District Office  
State Lease - 6 Copies  
Fee Lease - 5 Copies

OIL CONSERVATION  
DIVISION

☐ AMENDED REPORT

APPLICATION FOR PERMIT TO DRILL, RE-ENTER, DEEPEN, PLUGBACK, OR ADD A ZONE

<sup>1</sup> Operator Name and Address <b>El Paso Energy Raton, L.L.C. PO Box 190 Raton, NM 87740</b>		<sup>2</sup> OGRID Number <b>180514</b>
		<sup>3</sup> API Number <b>30-007-20470</b>
<sup>3</sup> Property Code <b>32505</b>	<sup>5</sup> Property Name <b>VERMEJO PARK RANCH</b>	<sup>6</sup> Well No. <b>VPR CH 35</b>

<sup>7</sup> Surface Location

UL or lot no.	Section	Townshi	Range	Lot Idn	Feet from the	North/South line	Feet from the	East/West line	County
E	35	30N	19E	E	2076	NORTH	267	WEST	COLFAX

<sup>8</sup> Proposed Bottom Hole Location If Different From Surface

UL or lot no.	Section	Township	Range	Lot Idn	Feet from the	North/South line	Feet from the	East/West line	County

<sup>9</sup> Proposed Pool 1 <b>VERMEJO</b>	<sup>10</sup> Proposed Pool 2 <b>RATON</b>
--	---

<sup>11</sup> Work Type Code <b>N</b>	<sup>12</sup> Well Type Code <b>Strat Test</b>	<sup>13</sup> Cable/Rotary <b>Continuous Core</b>	<sup>14</sup> Lease Type Code <b>P</b>	<sup>15</sup> Ground Level Elevation <b>7200'</b>
<sup>16</sup> Multiple	<sup>17</sup> Proposed Depth <b>1,650</b>	<sup>18</sup> Formation <b>Trinidad</b>	<sup>19</sup> Contractor <b>Dynatec Drilling, Inc.</b>	<sup>20</sup> Spud Date <b>12-01-03</b>

<sup>21</sup> Proposed Casing and Cement Program

Hole Size	Casing Size	Casing weight/foot	Setting Depth	Sacks of Cement	Estimated TOC
<b>7 7/8"</b>	<b>5 1/2"</b>	<b>15.5#</b>	<b>300'</b>	<b>45 sx</b>	<b>Surface</b>

<sup>22</sup> Describe the proposed program. If this application is to DEEPEN or PLUG BACK, give the data on the present productive zone and proposed new productive zone.

Describe the blowout prevention program, if any. Use additional sheets if necessary.

1. Drill 7 7/8" hole to +/- 300' with air.
2. Set 300' of 5 1/2" surface casing and cement to surface.
3. Drill and retrieve continuous core to TD. Run open hole logs.
4. Plug and abandon hole as per instructions from NMOCD.

<sup>23</sup> I hereby certify that the information given above is true and complete to the best of my knowledge and belief.

Signature: *DR Lankford*

Printed name: Donald R. Lankford

Title: Principal Engineer

Date: 11-07-03

Phone: (505) 445-6720

OIL CONSERVATION DIVISION

Approved by: *[Signature]*

Title: DISTRICT SUPERVISOR

Approval Date: 11/24/03

Expiration Date: 11/24/04

Conditions of Approval:

Attached ☐

District I  
1625 N. French Dr., Hobbs, NM 88240  
District II  
1301 W. Grand Avenue, Artesia, NM 88210  
District III  
1000 Rio Brazos Rd., Aztec, NM 87410  
District IV  
1220 S. St. Francis Dr., Santa Fe, NM 87505

State of New Mexico  
Energy, Minerals & Natural Resources Department  
**OIL CONSERVATION DIVISION**  
1220 South St. Francis Dr.  
Santa Fe, NM 87505

Form C-102  
Revised August 15, 2000  
Submit to Appropriate District Office  
State Lease - 4 Copies  
Fee Lease - 3 Copies  
☐ AMENDED REPORT

**WELL LOCATION AND ACREAGE DEDICATION PLAT**

<sup>1</sup> API Number		<sup>2</sup> Pool Code 96970	<sup>3</sup> Pool Name STRAT TEST
<sup>4</sup> Property Code <del>5m</del> -24648 25179	<sup>5</sup> Property Name VERMEJO PARK RANCH		<sup>6</sup> Well Number VPR CH 35
<sup>7</sup> OGRID No. 180514	<sup>8</sup> Operator Name EL PASO ENERGY RATON, L.L.C.		<sup>9</sup> Elevation 7200' ±

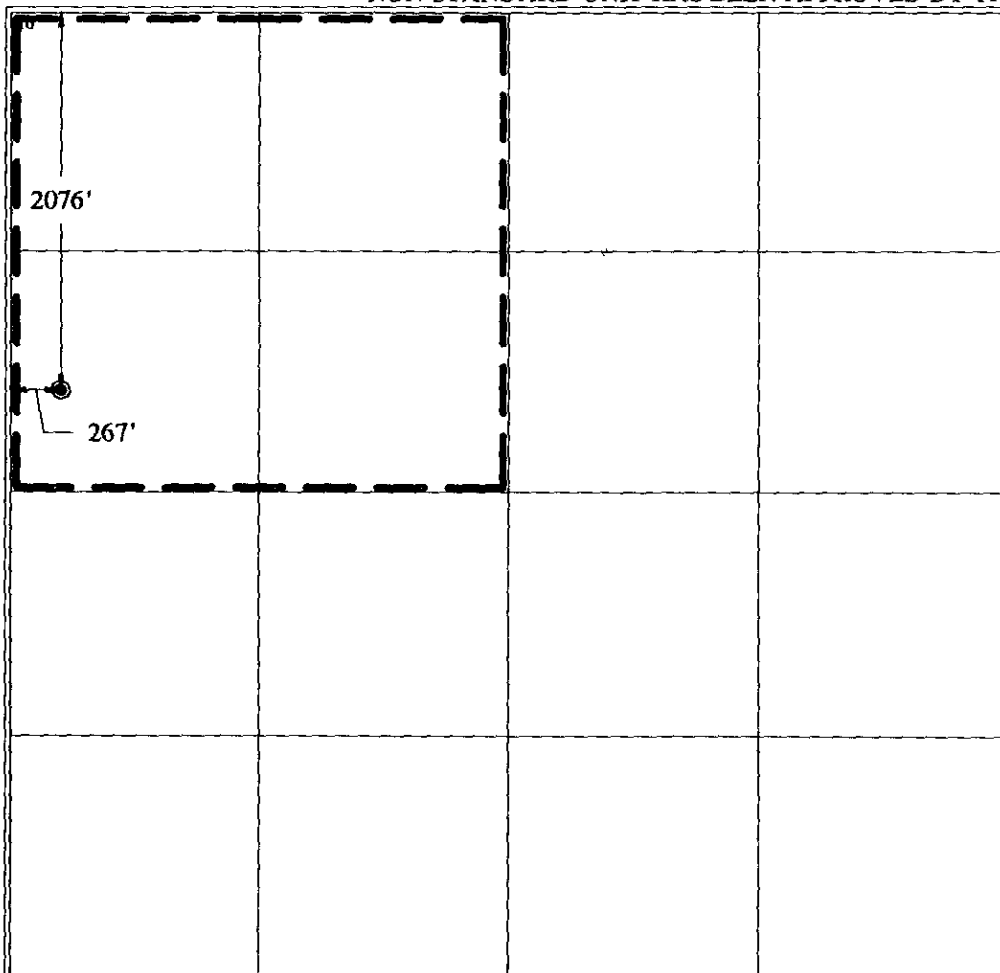
<sup>10</sup> Surface Location

UL or lot no. E	Section 35	Township 30 N	Range 19 E	Lot Idn E	Feet from the 2076	North/South line NORTH	Feet from the 267	East/West line WEST	County COLFAX
--------------------	---------------	------------------	---------------	--------------	-----------------------	---------------------------	----------------------	------------------------	------------------

<sup>11</sup> Bottom Hole Location If Different From Surface

UL or lot no.	Section	Township	Range	Lot Idn	Feet from the	North/South line	Feet from the	East/West line	County
<sup>12</sup> Dedicated Acres		<sup>13</sup> Joint or Infill	<sup>14</sup> Consolidation Code		<sup>15</sup> Order No.				

NO ALLOWABLE WILL BE ASSIGNED TO THIS COMPLETION UNTIL ALL INTERESTS HAVE BEEN CONSOLIDATED OR A NON-STANDARD UNIT HAS BEEN APPROVED BY THE DIVISION



<sup>17</sup> OPERATOR CERTIFICATION

I hereby certify that the information contained herein is true and complete to the best of my knowledge and belief.

Signature

*DR Lankford*

Printed Name DONALD R. LANKFORD

Title SENIOR PETROLEUM ENGINEER

Date

<sup>18</sup> SURVEYOR CERTIFICATION

I hereby certify that the well location shown on this plat was plotted from field notes of actual surveys made by me or under my supervision, and that the same is true and correct to the best of my belief.

November 1, 2003

Date of Survey

Signature and Seal of Professional Surveyor:

*Gu Shultz*  
Certificate Number NM LS NO. 5103