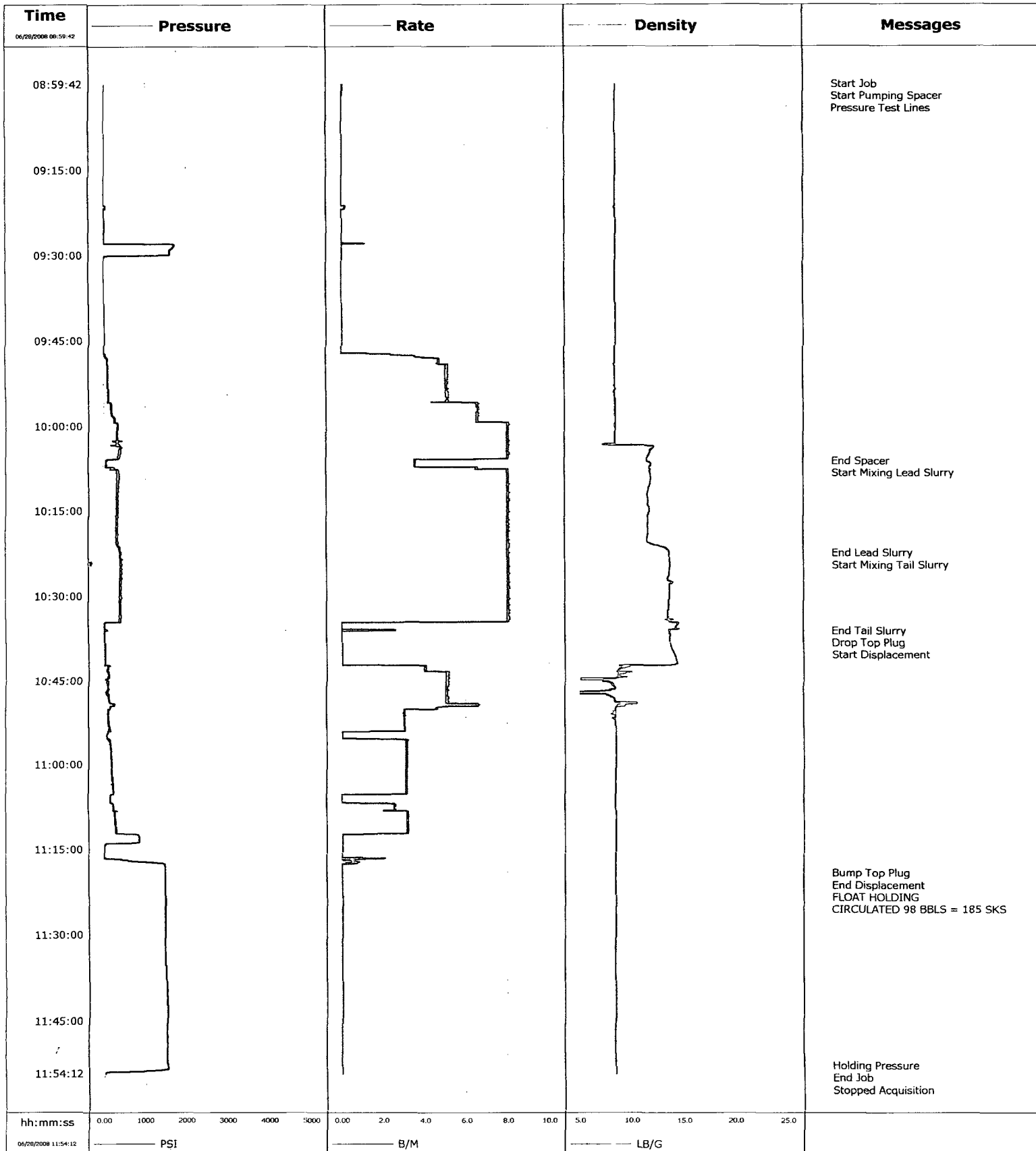


Well	WEBB 3 - 23	Client	SHELL OIL COMPANY
Field	30-019-20135	SIR No.	
Engineer		Job Type	CEM SURFACE CASING
Country	United States	Job Date	06-27-2008





Cementing Service Report

Customer SHELL OIL COMPANY				Job Number 2201756968			
Well WEBB 3 - 23		Location (legal)		Schlumberger Location HOBBS		Job Start Jun/27/2008	
Field WILDCAT		Formation Name/Type		Deviation	Bit Size 14.8 in	Well MD 981.0 ft	Well TVD 981.0 ft
County GUADALUPE		State/Province NEW MEXICO		BHP	BHST	BHCT	Pore Press. Gradient
Well Master 0631034156		API/UWI					
Rig Name NABORS M43	Drilled For Oil	Service Via Land	Casing/Liner				
			Depth, ft	Size, in	Weight, lb/ft	Grade	Thread
Offshore Zone	Well Class NEW	Well Type New Well Completion	981.0	10.750	40.5		
			0.0	0.000	0.0		
Drilling Fluid Type		Max. Density	Plastic Viscosity	Tubing/Drill Pipe			
				Depth,	Size,	Weight,	Grade
							Thread
Service Line Cementing		Job Type Cem Surface Casing					
Max. Allowed Tubing Press	Max. Allowed Ann. Press	WellHead Connection Single Cement head	Perforations/Open Hole				
			Top,	Bottom,		No. of Shots	Total Interval
							Diameter
Service Instructions				Treat Down Casing	Displacement 93.0 bbl	Packer Type	Packer Depth
				Tubing Vol.	Casing Vol.	Annular Vol. 125.0 bbl	Openhole Vol.
Casing/Tubing Secured <input checked="" type="checkbox"/>	1 Hole Volume Circulated prior to Cement <input checked="" type="checkbox"/>			Casing Tools		Squeeze Job	
Lift Pressure 300 psi		Shoe Type Guide	Shoe Depth 981.0 ft	Squeeze Type	Tool Type	Tool Depth	Tail Pipe Size
Pipe Rotated <input type="checkbox"/>	Pipe Reciprocated <input type="checkbox"/>	No. Centralizers	Top Plugs 1	Bottom Plugs 1	Stage Tool Type	Stage Tool Depth	Tail Pipe Depth
Cement Head Type Single		Collar Type Guide	Collar Depth 938.0 ft	Sqz. Total Vol.			
Job Scheduled For Jun/27/2008	Arrived on Location Jun/27/2008	Leave Location Jun/27/2008					
Date	Time 24-hr clock	Treating Pressure PSI	Flow Rate B/M	Density LB/G	Volume BBL	Message	
01/01/1970	00:00:00					Started Acquisition	
01/01/1970	00:00:00					Stopped Acquisition	
06/28/2008	07:34:14					Started Acquisition	
06/28/2008	08:59:42	6	0.1	8.40	0.0		
06/28/2008	08:59:43					Start Job	
06/28/2008	08:59:43	6	0.0	8.40	0.0		
06/28/2008	08:59:45					Start Pumping Spacer	
06/28/2008	08:59:45	6	0.0	8.40	0.0		
06/28/2008	08:59:47					Pressure Test Lines	
06/28/2008	08:59:47	6	0.1	8.40	0.0		
06/28/2008	09:00:00	6	0.1	8.40	0.0		
06/28/2008	09:03:20	7	0.0	8.40	0.1		
06/28/2008	09:06:40	7	0.0	8.40	0.1		
06/28/2008	09:10:00	7	0.0	8.40	0.1		
06/28/2008	09:13:20	8	0.0	8.40	0.1		
06/28/2008	09:16:40	8	0.0	8.40	0.1		
06/28/2008	09:20:00	8	0.0	8.40	0.1		
06/28/2008	09:23:20	20	0.0	8.40	0.2		
06/28/2008	09:26:40	20	0.0	8.40	0.2		
06/28/2008	09:30:00	53	0.0	8.40	0.3		
06/28/2008	09:33:20	7	0.0	8.40	0.3		
06/28/2008	09:36:40	7	0.0	8.40	0.3		

Well			Field	Job Start	Customer	Job Number
WEBB 3 23			WILDCAT	Jun/27/2008	SHELL OIL COMPANY	2201756968
Date	Time 24-hr clock	Treating Pressure PSI	Flow Rate B/M	Density LB/G	Volume BBL	Message
06/28/2008	09:40:00	7	0.0	8.40	0.3	
06/28/2008	09:43:20	7	0.0	8.40	0.3	
06/28/2008	09:46:40	14	0.0	8.40	0.3	
06/28/2008	09:50:00	110	5.1	8.40	13.3	
06/28/2008	09:53:20	105	5.1	8.40	30.2	
06/28/2008	09:56:40	170	6.6	8.39	48.5	
06/28/2008	10:00:00	332	8.0	8.39	71.5	
06/28/2008	10:03:20	343	8.0	11.42	98.1	
06/28/2008	10:06:08					End Spacer
06/28/2008	10:06:08	81	3.5	11.58	118.7	
06/28/2008	10:06:10					Start Mixing Lead Slurry
06/28/2008	10:06:10	81	3.5	11.64	118.8	
06/28/2008	10:06:40	77	3.5	11.90	120.6	
06/28/2008	10:10:00	340	8.0	11.75	144.7	
06/28/2008	10:13:20	321	8.0	11.56	171.4	
06/28/2008	10:16:40	319	8.0	11.60	198.1	
06/28/2008	10:20:00	337	8.0	11.53	224.8	
06/28/2008	10:22:25					End Lead Slurry
06/28/2008	10:22:25	415	8.0	13.64	244.2	
06/28/2008	10:22:27					Start Mixing Tail Slurry
06/28/2008	10:22:27	439	8.0	13.64	244.4	
06/28/2008	10:23:20	416	8.0	13.62	251.5	
06/28/2008	10:26:40	397	8.0	13.44	278.2	
06/28/2008	10:30:00	404	8.0	13.57	304.9	
06/28/2008	10:33:20	418	8.0	13.49	331.6	
06/28/2008	10:36:07					End Tail Slurry
06/28/2008	10:36:07	37	0.0	13.63	341.9	
06/28/2008	10:36:09					Drop Top Plug
06/28/2008	10:36:09	33	0.0	13.64	341.9	
06/28/2008	10:36:10					Start Displacement
06/28/2008	10:36:10	34	0.0	13.63	341.9	
06/28/2008	10:36:40	29	0.0	13.69	341.9	
06/28/2008	10:40:00	33	0.0	14.01	341.9	
06/28/2008	10:43:20	106	5.1	8.62	347.1	
06/28/2008	10:46:40	121	5.0	7.43	364.0	
06/28/2008	10:50:00	113	3.0	8.42	381.2	
06/28/2008	10:53:20	137	3.0	8.40	391.3	
06/28/2008	10:56:40	165	3.1	8.40	397.5	
06/28/2008	11:00:00	196	3.1	8.40	407.8	
06/28/2008	11:03:20	233	3.1	8.40	418.2	
06/28/2008	11:06:40	179	0.1	8.40	424.0	
06/28/2008	11:10:00	283	3.2	8.40	433.5	
06/28/2008	11:13:20	854	0.0	8.40	440.5	
06/28/2008	11:16:40	423	0.5	8.40	440.9	
06/28/2008	11:19:07					Bump Top Plug
06/28/2008	11:19:07	1490	0.0	8.40	441.3	
06/28/2008	11:19:08					End Displacement
06/28/2008	11:19:08	1491	0.0	8.40	441.3	
06/28/2008	11:19:17					FLOAT HOLDING
06/28/2008	11:19:17	1491	0.0	8.40	441.3	
06/28/2008	11:20:00	1490	0.0	8.40	441.3	
06/28/2008	11:20:15					CIRCULATED 98 BBLs = 185 SKS
06/28/2008	11:20:15	1489	0.0	8.40	441.3	
06/28/2008	11:23:20	1489	0.0	8.40	441.3	
06/28/2008	11:26:40	1489	0.0	8.40	441.3	

Well		Field		Job Start		Customer		Job Number	
WEBB 3 - 23		WILDCAT		Jun/27/2008		SHELL OIL COMPANY		2201756968	
Date	Time 24-hr clock	Treating Pressure PSI	Flow Rate B/M	Density LB/G	Volume BBL	Message			
06/28/2008	11:30:00	1493	0.0	8.40	441.3				
06/28/2008	11:33:20	1496	0.0	8.40	441.3				
06/28/2008	11:36:40	1501	0.0	8.40	441.3				
06/28/2008	11:40:00	1507	0.0	8.40	441.3				
06/28/2008	11:43:20	1514	0.0	8.39	441.3				
06/28/2008	11:46:40	1521	0.0	8.39	441.3				
06/28/2008	11:50:00	1529	0.0	8.39	441.3				
06/28/2008	11:52:48					Holding Pressure			
06/28/2008	11:52:48	1536	0.0	8.39	441.3				
06/28/2008	11:53:20	1538	0.0	8.39	441.3				
06/28/2008	11:54:08					End Job			
06/28/2008	11:54:08	28	0.0	8.39	441.3				
06/28/2008	11:54:14					Stopped Acquisition			

Post Job Summary

Average Pump Rates,				Volume of Fluid Injected, bbl			
Slurry	N2	Mud	Maximum Rate	Total Slurry 226.0	Mud	Spacer 50.0	N2
Treating Pressure Summary, psi				Breakdown Fluid			
Maximum 1500	Final 300	Average	Break Plug to 1500	Breakdown	Type FreshWater	Volume	Density 8.34 lb/gal
Avg. N2 Percent	Designed Slurry Volume 226.0 bbl	Displacement 93.0 bbl	Mix Water Temp 60 degF	Cement Circulated to Surface? <input checked="" type="checkbox"/>	Washed Thru Perfs <input type="checkbox"/>	Volume 98.0 bbl	To
Customer or Authorized Representative GEORGE STAMPLEY			Schlumberger Supervisor J, ANTILLON		Circulation Lost <input type="checkbox"/>	Job Completed <input checked="" type="checkbox"/>	