

Submit One Copy To Appropriate District Office

District I

1625 N. French Dr., Hobbs, NM 88240

District II

1301 W. Grand Ave., Artesia, NM 88210

District III

1000 Rio Brazos Rd., Aztec, NM 87410

District IV

1220 S. St. Francis Dr., Santa Fe, NM 87505

State of New Mexico
Energy, Minerals and Natural Resources

OIL CONSERVATION DIVISION
1220 South St. Francis Dr.
Santa Fe, NM 87505

Form C-103

March 18, 2009

WELL API NO.

30-049-20022

5. Indicate Type of Lease

STATE ☐ FEE ☒

6. State Oil & Gas Lease No.

306021

7. Lease Name or Unit Agreement Name

Black Ferrill

8. Well Number 1

9. OGRID Number

240497

10. Pool name or Wildcat

Undes Niobrara CSF

SUNDRY NOTICES AND REPORTS ON WELLS

(DO NOT USE THIS FORM FOR PROPOSALS TO DRILL OR TO DEEPEN OR PLUG BACK TO A DIFFERENT RESERVOIR. USE "APPLICATION FOR PERMIT" (FORM C-101) FOR SUCH PROPOSALS.)

1. Type of Well: ☒ Oil Well ☐ Gas Well ☐ Other

2. Name of Operator

Tecton Energy Operating, LLC

3. Address of Operator

3000 Wilcrest, Suite 300; Houston, TX 77042

4. Well Location

Unit Letter H : 2310 feet from the North line and 990 feet from the East line

Section 1 Township 13N Range 8E NMPM _____ County Santa Fe

11. Elevation (Show whether DR, RKB, RT, GR, etc.) 5884 GR

12. Check Appropriate Box to Indicate Nature of Notice, Report or Other Data

NOTICE OF INTENTION TO:

PERFORM REMEDIAL WORK ☐ PLUG AND ABANDON ☐

TEMPORARILY ABANDON ☐ CHANGE PLANS ☐

PULL OR ALTER CASING ☐ MULTIPLE COMPL ☐

OTHER: ☐

SUBSEQUENT REPORT OF:

REMEDIAL WORK ☐ ALTERING CASING ☐

COMMENCE DRILLING OPNS. ☐ P AND A ☒

CASING/CEMENT JOB ☐ See Attached Report

☒ Location is ready for OCD inspection after P&A

☒ All pits have been remediated in compliance with OCD rules and the terms of the Operator's pit permit and closure plan.

☒ Rat hole and cellar have been filled and leveled. Cathodic protection holes have been properly abandoned.

☒ A steel marker at least 4" in diameter and at least 4' above ground level has been set in concrete. It shows the

OPERATOR NAME, LEASE NAME, WELL NUMBER, API NUMBER, QUARTER/QUARTER LOCATION OR UNIT LETTER, SECTION, TOWNSHIP, AND RANGE. ALL INFORMATION HAS BEEN WELDED OR PERMANENTLY STAMPED ON THE MARKER'S SURFACE.

☒ The location has been leveled as nearly as possible to original ground contour and has been cleared of all junk, trash, flow lines and other production equipment.

☒ Anchors, dead men, tie downs and risers have been cut off at least two feet below ground level.

☒ If this is a one-well lease or last remaining well on lease, the battery and pit location(s) have been remediated in compliance with OCD rules and the terms of the Operator's pit permit and closure plan. All flow lines, production equipment and junk have been removed from lease and well location.

☒ All metal bolts and other materials have been removed. Portable bases have been removed. (Poured onsite concrete bases do not have to be removed.)

☒ All other environmental concerns have been addressed as per OCD rules.

☒ Pipelines and flow lines have been abandoned in accordance with 19.15.35.10 NMAC. All fluids have been removed from non-retrieved flow lines and pipelines.

When all work has been completed, return this form to the appropriate District office to schedule an inspection.

SIGNATURE

TITLE

Managing Partner

DATE

6-23-09

TYPE OR PRINT NAME

W. K. Dirks

E-MAIL:

bdirks@tectonenergy.com

PHONE:

281-668-8070

For State Use Only

APPROVED BY:

Ed Martin

TITLE

DISTRICT SUPERVISOR

DATE

7/1/09

Conditions of Approval (if any):

David Daniel

From: rejohnson@cybermesa.com
Sent: Friday, June 19, 2009 10:47 AM
To: David Daniel
Subject: NMOCD Final Report

David. This is what I would suggest to have on the final Sundry Report.

6-15-09; MIRU Key Energy Service Rig #33.

6-16-09; Bleed pressure off well and kill with fresh water, pull rods and insert pump, could not pump down tubing, RU and RIH with slick line, perforate tubing, shut down for night.

6-17-09; Fill well bore with fresh water, TOOH with tubing, establish rate, RU Superior Well Service, mix and pump 150 sxs Class cement, 4 bbls squeezed into perfs, well bore full of 15.6# cement, release equipment, start rigging down Key.

6-18-09; De-mob Key rig, weld on dry hole marker, cut off anchors, clean location and disk location and access road. Location is ready for inspection.

Final Report.

- 1
2
3
4
5
6
7
8
9
10
11
12
13
14
15
16
17
18
19
20
21
22
23
24
25
26
27
28
29
30
31
32
33
34
35
36
37
38
39
40
41
42
43
44
45
46
47
48
49
50
51
52
53
54
55
56
57
58
59
60
61
62
63
64
65
66
67
68
69
70
71
72
73
74
75
76
77
78
79
80
81
82
83
84
85
86
87
88
89
90
91
92
93
94
95
96
97
98
99
100
101
102
103
104
105
106
107
108
109
110
111
112
113
114
115
116
117
118
119
120
121
122
123
124
125
126
127
128
129
130
131
132
133
134
135
136
137
138
139
140
141
142
143
144
145
146
147
148
149
150
151
152
153
154
155
156
157
158
159
160
161
162
163
164
165
166
167
168
169
170
171
172
173
174
175
176
177
178
179
180
181
182
183
184
185
186
187
188
189
190
191
192
193
194
195
196
197
198
199
200
201
202
203
204
205
206
207
208
209
210
211
212
213
214
215
216
217
218
219
220
221
222
223
224
225
226
227
228
229
230
231
232
233
234
235
236
237
238
239
240
241
242
243
244
245
246
247
248
249
250
251
252
253
254
255
256
257
258
259
260
261
262
263
264
265
266
267
268
269
270
271
272
273
274
275
276
277
278
279
280
281
282
283
284
285
286
287
288
289
290
291
292
293
294
295
296
297
298
299
300
301
302
303
304
305
306
307
308
309
310
311
312
313
314
315
316
317
318
319
320
321
322
323
324
325
326
327
328
329
330
331
332
333
334
335
336
337
338
339
340
341
342
343
344
345
346
347
348
349
350
351
352
353
354
355
356
357
358
359
360
361
362
363
364
365
366
367
368
369
370
371
372
373
374
375
376
377
378
379
380
381
382
383
384
385
386
387
388
389
390
391
392
393
394
395
396
397
398
399
400
401
402
403
404
405
406
407
408
409
410
411
412
413
414
415
416
417
418
419
420
421
422
423
424
425
426
427
428
429
430
431
432
433
434
435
436
437
438
439
440
441
442
443
444
445
446
447
448
449
450
451
452
453
454
455
456
457
458
459
460
461
462
463
464
465
466
467
468
469
470
471
472
473
474
475
476
477
478
479
480
481
482
483
484
485
486
487
488
489
490
491
492
493
494
495
496
497
498
499
500
501
502
503
504
505
506
507
508
509
510
511
512
513
514
515
516
517
518
519
520
521
522
523
524
525
526
527
528
529
530
531
532
533
534
535
536
537
538
539
540
541
542
543
544
545
546
547
548
549
550
551
552
553
554
555
556
557
558
559
560
561
562
563
564
565
566
567
568
569
570
571
572
573
574
575
576
577
578
579
580
581
582
583
584
585
586
587
588
589
590
591
592
593
594
595
596
597
598
599
600
601
602
603
604
605
606
607
608
609
610
611
612
613
614
615
616
617
618
619
620
621
622
623
624
625
626
627
628
629
630
631
632
633
634
635
636
637
638
639
640
641
642
643
644
645
646
647
648
649
650
651
652
653
654
655
656
657
658
659
660
661
662
663
664
665
666
667
668
669
670
671
672
673
674
675
676
677
678
679
680
681
682
683
684
685
686
687
688
689
690
691
692
693
694
695
696
697
698
699
700
701
702
703
704
705
706
707
708
709
710
711
712
713
714
715
716
717
718
719
720
721
722
723
724
725
726
727
728
729
730
731
732
733
734
735
736
737
738
739
740
741
742
743
744
745
746
747
748
749
750
751
752
753
754
755
756
757
758
759
760
761
762
763
764
765
766
767
768
769
770
771
772
773
774
775
776
777
778
779
780
781
782
783
784
785
786
787
788
789
790
791
792
793
794
795
796
797
798
799
800
801
802
803
804
805
806
807
808
809
810
811
812
813
814
815
816
817
818
819
820
821
822
823
824
825
826
827
828
829
830
831
832
833
834
835
836
837
838
839
840
84

- **TECTON ENERGY**
- **BLACK FERRILL #1**
- **3 1/2"**
- **Wednesday, June 17, 2009**
- **Superior Well Services**
- **36-001323-01**



Customer Information

Customer Name TECTON ENERGY
District-Division
Street
City
State
Zip Code
Phone 505-699-5741
Witness(es) ROY HOHNSON

Lease Information

Lease Name BLACK FERRILL #1
Physical Location
County SANTA FE
State NM

Well Information

Casing Size 3 1/2"
Casing Weight 9.2#
Casing Connection
Casing I.D.
Hole Size
Calculated Annular Excess %
BHST
T.D. 2764'
Casing Length
Shoe Joint
Float Collar
Calculated T.O.C.
Previous Casing Depth
Previous Casing Size
Previous Casing Weight
Drill Pipe Size 1 1/16"
Drill Pipe Weight 1.14#

Call-Out Information

Job Type PLUG TO ABANDON
Service Center(s) FARMINGTON
Bulk Location(s) FARMINGTON
Supervisor(s) SHELDON JONES
Pumping Equipment 3190/3352
Auxillary Equipment 3148/3224
Time Called Out 02:00
Time On Location 8:00

Wednesday, June 17, 2009

2 of 11

© Superior Well Services

**BREAK THROUGH.**

Planned Time of Job
Weather Conditions

8:30
SUNNY, CLEAR, AND GETTING HOT

{1}PLUG TO ABANDON - Job Log

	Comment	PUMP2p	PUMP1p	PUMP RATE-bpm	DENSITY-p pg	SLRY VOL STG-bbls	SLRY VOL TOT-bbls
09:54:40	Start Recording	0	0	0.0	8.33	0.0	0.0
09:54:42	Start Job	0	0	0.0	8.32	0.0	0.0
09:54:44	Start Job	0	0	0.0	8.32	0.0	0.0
09:56:42	Rate Check	0	0	0.0	8.32	0.0	0.0
09:58:43	Rate Check	0	0	0.0	8.35	0.1	0.1
10:00:43	Rate Check	0	4	0.0	8.32	0.2	0.2
10:02:43	Rate Check	17	0	0.0	8.36	0.2	0.2
10:04:43	Rate Check	0	0	0.0	8.32	0.2	0.2
10:06:43	Rate Check	1307	1019	0.0	7.93	0.3	0.3
10:07:05	Test Lines	1584	1218	0.0	7.62	0.3	0.3
10:08:43	Rate Check	20	4	0.0	7.93	0.3	0.3
10:10:43	Rate Check	20	0	0.0	7.93	0.3	0.3
10:12:43	Rate Check	19	4	0.0	8.33	0.3	0.3
10:13:09	Start Stage	24	4	0.8	8.32	0.6	0.6
10:13:15	H2o Spr	24	4	0.8	8.32	0.1	0.7
10:14:43	Rate Check	27	4	2.2	8.32	2.6	3.2
10:16:43	Rate Check	33	12	2.2	8.31	7.1	7.6
10:18:43	Rate Check	653	525	0.9	8.31	9.5	10.1
10:20:43	Rate Check	895	696	0.7	8.31	11.1	11.7
10:22:43	Rate Check	1238	977	0.9	8.31	12.9	13.5
10:24:43	Rate Check	1509	1187	0.9	8.31	14.8	15.3
10:26:15	EST. INJ. RT.	1490	1163	0.7	8.31	15.9	16.5
10:26:43	Rate Check	1503	1183	0.7	8.31	16.2	16.8
10:28:43	Rate Check	1476	1152	0.5	8.31	17.3	17.9
10:30:43	Rate Check	1488	1163	0.6	8.31	18.4	19.0
10:32:43	Rate Check	1494	1167	0.5	8.31	19.5	20.0
10:34:43	Rate Check	1209	934	0.3	8.31	20.2	20.8
10:36:43	Rate Check	1363	1062	0.5	8.31	21.2	21.8
10:38:43	Rate Check	1279	988	0.0	8.31	21.8	22.4
10:40:45	Rate Check	1024	790	0.0	8.31	21.8	22.4
10:42:46	Rate Check	824	634	0.0	8.31	21.8	22.4
10:44:46	Rate Check	571	424	0.0	8.31	21.8	22.4
10:46:46	Rate Check	242	167	0.0	8.29	21.8	22.4
10:48:46	Rate Check	16	0	0.0	8.32	21.8	22.4
10:50:46	Rate Check	0	0	0.0	8.32	21.8	22.4
10:52:46	Rate Check	0	4	0.0	8.32	21.8	22.4
10:54:46	Rate Check	0	0	0.0	8.32	21.8	22.4
10:56:46	Rate Check	0	0	0.0	8.32	21.9	22.4
10:58:46	Rate Check	0	0	0.0	8.32	21.9	22.4
10:59:44	Start Stage	0	0	0.0	8.32	0.0	22.4
13:13:35	Start Recording	0	0	0.0	8.30	0.0	22.4
13:13:37	Start Recording	0	0	0.0	8.30	0.0	22.4
13:13:39	Start Recording	0	0	0.0	8.32	0.0	22.4

Wednesday, June 17, 2009

3 of 11

© Superior Well Services



BREAK THROUGH.

	Comment	PUMP2p	PUMP1p	PUMP RATE-bpm	DENSITY-p pg	SLRY VOL STG-bbls	SLRY VOL TOT-bbls
13:13:41	Start	0	0	0.0	8.31	0.0	22.4
	Recording						
13:13:43	Start	0	-4	0.0	8.31	0.0	22.4
	Recording						
13:13:45	Start	0	-4	0.0	8.30	0.0	22.4
	Recording						
13:13:47	Start	0	0	0.0	8.31	0.0	22.4
	Recording						
13:13:49	Start	0	4	0.0	8.30	0.0	22.4
	Recording						
13:13:51	Start	0	0	0.0	8.30	0.0	22.4
	Recording						
13:13:53	Start	0	0	0.0	8.31	0.0	22.4
	Recording						
13:13:55	Start	0	8	0.0	8.29	0.0	22.4
	Recording						
13:13:57	Start	0	0	0.0	8.30	0.0	22.4
	Recording						
13:13:59	Start	0	0	0.0	8.30	0.0	22.4
	Recording						
13:14:01	Start	0	0	0.0	8.31	0.0	22.4
	Recording						
13:14:03	Start	0	0	0.0	8.31	0.0	22.4
	Recording						
13:14:05	Start	0	0	0.0	8.30	0.0	22.4
	Recording						
13:14:07	Start	0	0	0.0	8.31	0.0	22.4
	Recording						
13:14:09	Start	0	0	0.0	8.30	0.0	22.4
	Recording						
13:14:11	Start	0	0	0.0	8.30	0.0	22.4
	Recording						
13:14:13	Start	0	0	0.0	8.31	0.0	22.4
	Recording						
13:14:15	Start	0	0	0.0	8.30	0.0	22.4
	Recording						
13:14:17	Start	0	4	0.0	8.31	0.0	22.4
	Recording						
13:14:19	Start	0	8	0.0	8.31	0.0	22.4
	Recording						
13:14:21	Start	0	8	0.0	8.30	0.0	22.4
	Recording						
13:14:23	Start	0	8	0.0	8.31	0.0	22.4
	Recording						
13:14:25	Start	0	8	0.0	8.31	0.0	22.4
	Recording						
13:14:27	Start	0	8	0.0	8.31	0.0	22.4
	Recording						
13:14:29	Start	0	8	0.0	8.31	0.0	22.4
	Recording						
13:14:31	Start	0	8	0.8	8.30	0.0	22.5
	Recording						
13:14:33	Start	0	8	0.9	8.31	0.0	22.5
	Recording						

Wednesday, June 17, 2009

4 of 11

© Superior Well Services

**BREAK THROUGH.**

	Comment	PUMP2p	PUMP1p	PUMP RATE-bpm	DENSITY-p pg	SLRY VOL STG-bbls	SLRY VOL TOT-bbls
13:14:35	Start Recording	0	4	1.1	8.31	0.1	22.5
13:14:37	Start Recording	0	4	1.0	8.31	0.1	22.6
13:14:39	Start Recording	0	8	1.0	8.30	0.1	22.6
13:14:41	Start Recording	0	4	1.0	8.31	0.2	22.6
13:14:43	Start Recording	0	8	1.0	8.31	0.2	22.7
13:14:45	Start Recording	0	4	1.1	8.31	0.2	22.7
13:14:47	Start Recording	0	4	1.1	8.31	0.3	22.7
13:14:49	Start Recording	0	4	1.0	8.31	0.3	22.8
13:14:51	Start Recording	49	74	1.0	8.31	0.4	22.8
13:14:53	Load Hole	97	128	0.6	8.31	0.4	22.8
13:14:55	Load Hole	175	191	0.0	8.32	0.4	22.8
13:14:57	Rate Check	206	187	0.0	8.31	0.4	22.8
13:14:59	Rate Check	216	175	0.0	8.30	0.4	22.8
13:15:01	Rate Check	220	171	0.0	8.31	0.4	22.8
13:15:03	Rate Check	223	175	0.0	8.30	0.4	22.8
13:15:05	Rate Check	225	171	0.0	8.31	0.4	22.8
13:15:07	Rate Check	226	167	0.0	8.31	0.4	22.8
13:15:09	Rate Check	227	171	0.0	8.31	0.4	22.8
13:15:11	Rate Check	253	249	0.4	8.31	0.4	22.8
13:15:13	Rate Check	419	393	0.3	8.31	0.4	22.8
13:15:15	Rate Check	557	490	0.0	8.30	0.4	22.9
13:15:17	Rate Check	573	490	0.0	8.31	0.4	22.9
13:15:19	Rate Check	584	475	0.0	8.30	0.4	22.9
13:15:21	Rate Check	592	475	0.0	8.31	0.4	22.9
13:15:23	Rate Check	598	475	0.0	8.31	0.4	22.9
13:15:25	Rate Check	600	479	0.0	8.31	0.4	22.9
13:15:27	Rate Check	602	471	0.0	8.30	0.4	22.9
13:15:29	Rate Check	603	471	0.0	8.30	0.4	22.9
13:15:31	Rate Check	603	471	0.0	8.31	0.4	22.9
13:15:33	Rate Check	603	467	0.0	8.31	0.4	22.9
13:15:35	Rate Check	602	467	0.0	8.30	0.4	22.9
13:15:37	Rate Check	601	467	0.0	8.31	0.4	22.9
13:15:39	Rate Check	599	467	0.0	8.30	0.4	22.9
13:15:41	Rate Check	599	471	0.0	8.31	0.4	22.9
13:15:43	Rate Check	598	463	0.0	8.31	0.4	22.9
13:15:45	Rate Check	596	459	0.0	8.31	0.4	22.9
13:15:47	Rate Check	594	459	0.0	8.31	0.4	22.9
13:15:49	Rate Check	594	463	0.0	8.31	0.4	22.9
13:15:51	Rate Check	593	459	0.0	8.31	0.4	22.9
13:15:53	Rate Check	591	459	0.0	8.31	0.4	22.9
13:15:55	Rate Check	590	459	0.0	8.31	0.4	22.9
13:16:57	Rate Check	565	436	0.0	8.31	0.4	22.9
13:18:57	Rate Check	523	405	0.0	8.30	0.4	22.9
13:20:57	Rate Check	0	0	0.0	8.31	0.4	22.9
13:22:57	Rate Check	0	0	0.0	8.31	0.4	22.9



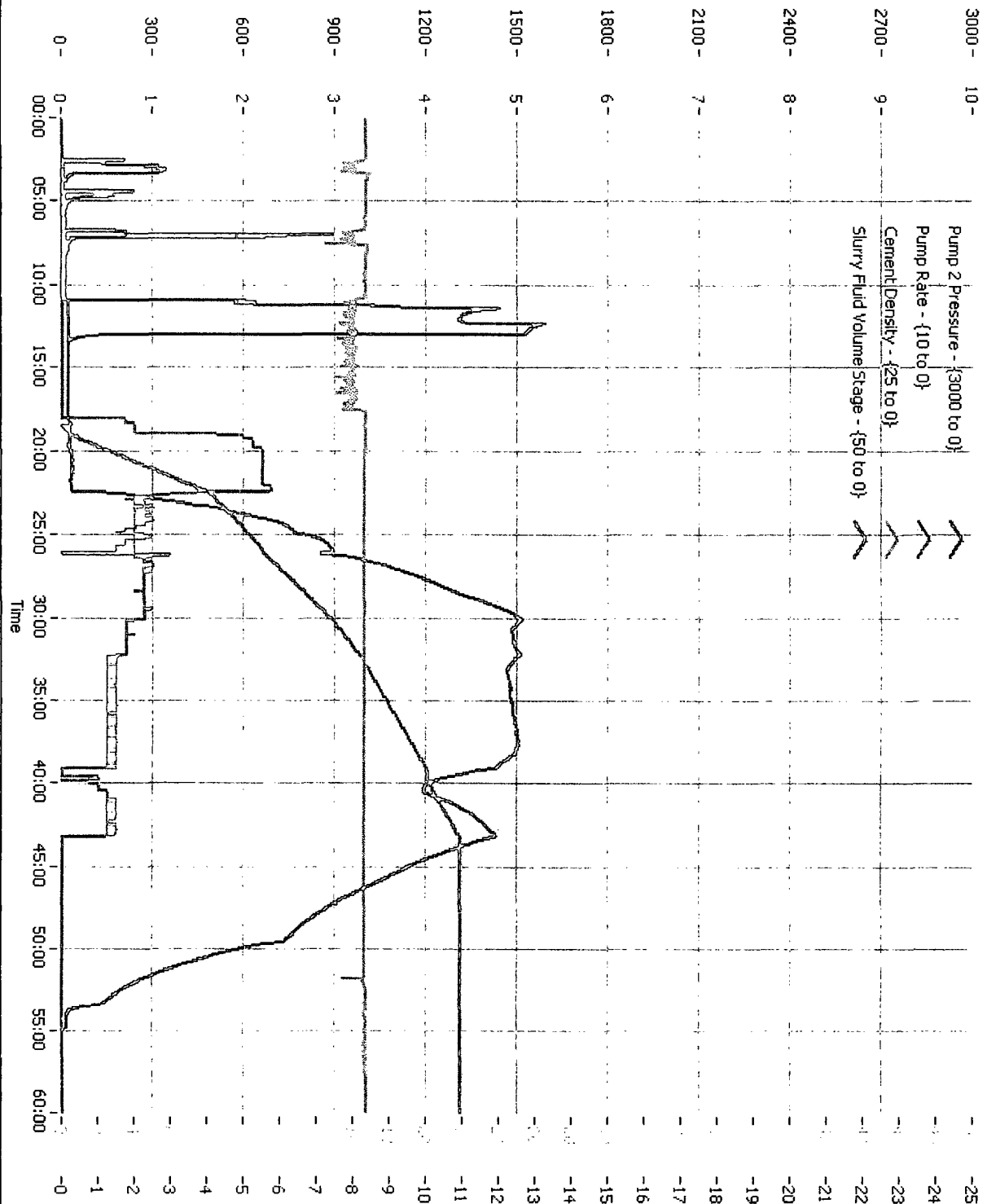
	Comment	PUMP2p	PUMP1p	PUMP RATE-bpm	DENSITY-p pg	SLRY VOL STG-bbls	SLRY VOL TOT-bbls
13:24:57	Rate Check 0	0	0	0.0	8.31	0.4	22.9
13:26:57	Rate Check 0	0	0	0.0	8.31	0.4	22.9
13:28:57	Rate Check 0	0	0	0.0	8.31	0.4	22.9
13:30:57	Rate Check 0	0	0	0.0	8.31	0.4	22.9
13:32:57	Rate Check 0	0	0	0.0	8.31	0.4	22.9
13:34:59	Rate Check 0	0	0	0.0	8.31	0.4	22.9
13:36:59	Rate Check 0	0	0	0.0	8.31	0.4	22.9
13:38:59	Rate Check 0	0	0	0.0	8.31	0.4	22.9
13:40:59	Rate Check 0	0	0	0.0	8.31	0.4	22.9
13:42:59	Rate Check 0	0	0	0.0	8.31	0.4	22.9
13:44:59	Rate Check 0	0	0	0.0	8.31	0.4	22.9
13:46:59	Rate Check 0	0	0	0.0	8.31	0.4	22.9
13:48:59	Rate Check 0	0	0	0.0	8.31	0.4	22.9
13:50:59	Rate Check 0	0	0	0.0	8.31	0.4	22.9
13:52:59	Rate Check 0	4	0	0.0	8.31	0.4	22.9

{1}PLUG TO ABANDON - Units

Pump 2 Pressure	PUMP2p	psi
Pump 1 Pressure	PUMP1p	psi
Pump Rate	PUMP RATE-bpm	bpm
Cement Density	DENSITY-ppg	ppg
Slurry Fluid Volume Stage	SLRY VOL STG-bbls	bbl
Slurry Fluid Volume Job	SLRY VOL TOT-bbls	bbl



BREAK THROUGH.



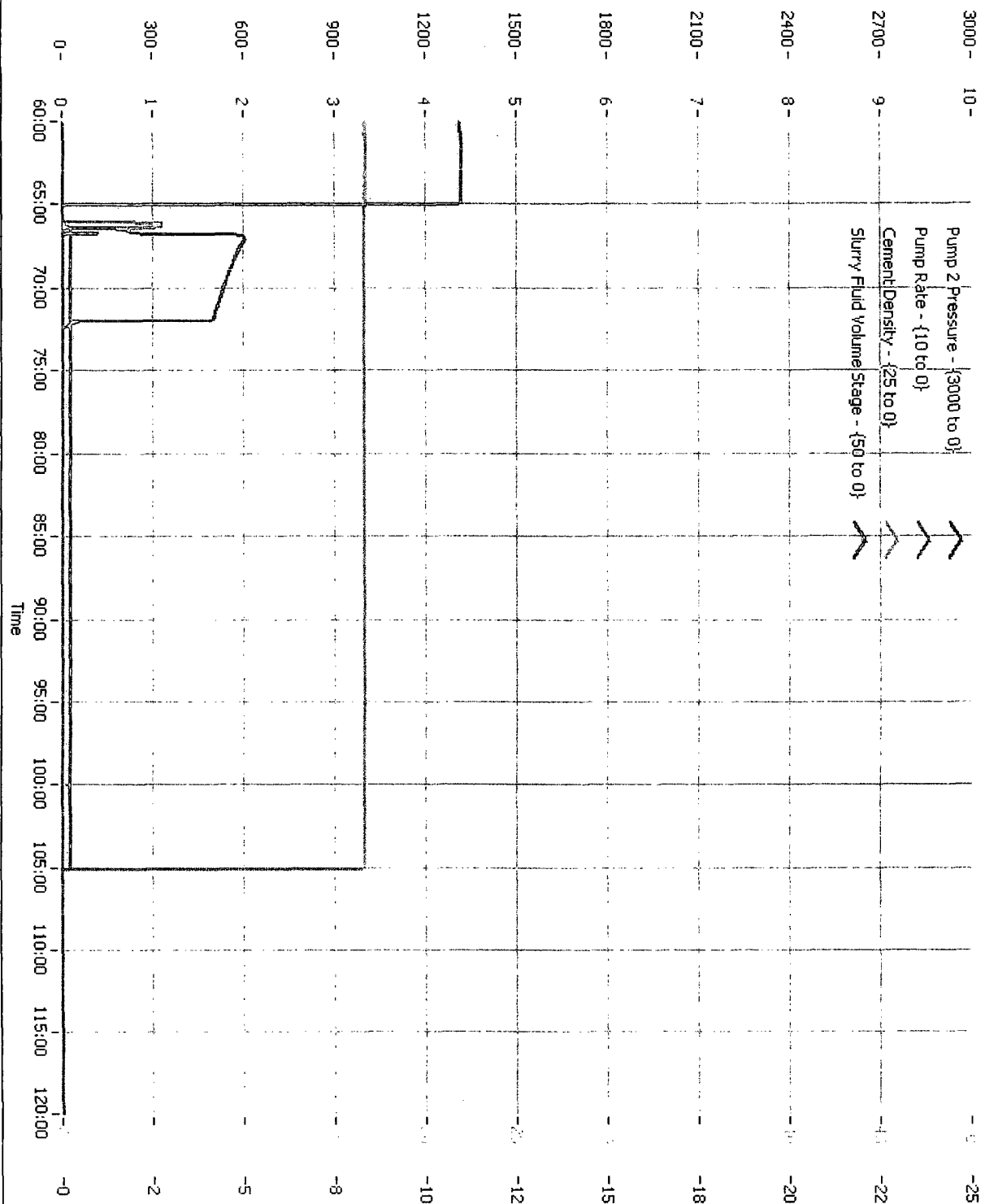
{1}PLUG TO ABANDON - Relative Time Chart [36-001323-00-1-RT-1]

Wednesday, June 17, 2009

7 of 11

© Superior Well Services

**BREAK THROUGH.**



{1}PLUG TO ABANDON - Relative Time Chart [36-001323-00-1-RT-2]

Wednesday, June 17, 2009

8 of 11

© Superior Well Services

**BREAK THROUGH.**

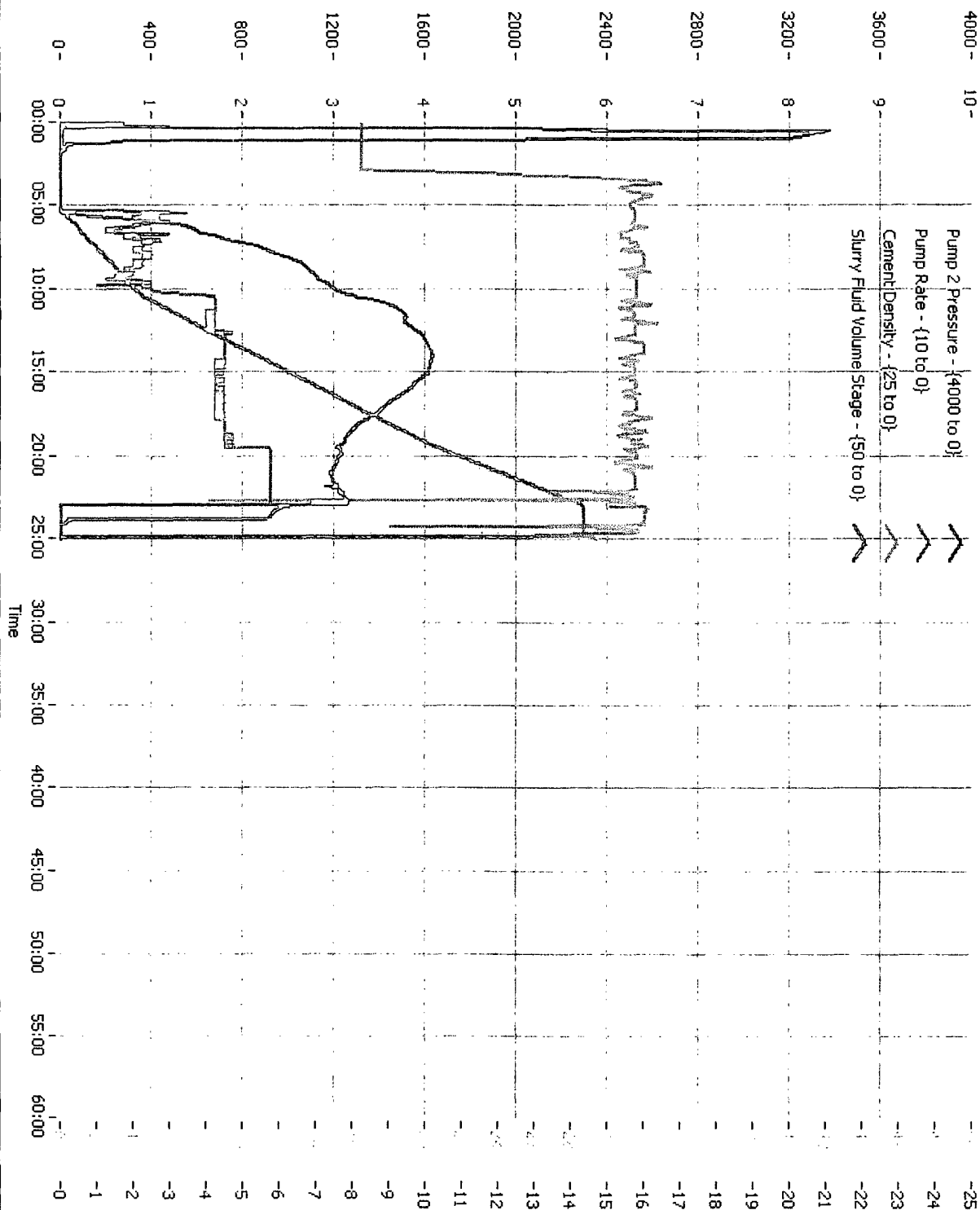
{2} PLUG TO ABANDON - Job Log

	Comment	PUMP2p	PUMP1p	PUMP RATE-bpm	DENSITY-p pg	SLRY VOL STG-bbls	SLRY VOL TOT-bbls
10:48:29	Start	0	0	0.0	8.24	0.0	0.0
	Recording						
10:48:31	Start Job	0	0	0.0	8.25	0.0	0.0
10:48:33	Start Job	0	4	0.0	8.25	0.0	0.0
10:49:03	Test Lines	3368	2634	0.0	8.29	0.1	0.1
10:49:09	Test Lines	3324	2576	0.0	8.25	0.1	0.1
10:49:57	Start Stage	29	0	0.0	8.24	0.1	0.1
10:50:31	Rate Check	0	0	0.0	8.26	0.0	0.1
10:52:31	Rate Check	0	0	0.0	15.44	0.0	0.1
10:54:31	Rate Check	435	385	1.1	15.73	0.7	0.8
10:56:31	Rate Check	976	798	0.9	15.98	2.4	2.5
10:58:31	Rate Check	1208	957	1.0	15.81	4.1	4.2
11:00:31	Rate Check	1512	1191	1.6	16.20	7.2	7.3
11:02:31	Rate Check	1632	1280	1.8	15.65	10.8	10.9
11:04:31	Rate Check	1530	1195	1.8	15.77	14.4	14.5
11:06:31	Rate Check	1315	1031	1.8	15.65	17.9	18.0
11:08:31	Rate Check	1223	961	2.3	15.81	21.8	21.9
11:10:31	Rate Check	1219	973	2.3	15.77	26.5	26.6
11:12:31	Rate Check	25	4	0.0	15.98	28.7	28.8
11:13:24	Shutin Well	0	4	0.0	14.61	28.7	28.8
11:13:26	Start Stage	0	0	0.0	14.55	0.0	0.0
11:13:28	End Job	0	0	0.0	14.66	0.0	0.0

{2} PLUG TO ABANDON - Units

Pump 2 Pressure	PUMP2p	psi
Pump 1 Pressure	PUMP1p	psi
Pump Rate	PUMP RATE-bpm	bpm
Cement Density	DENSITY-ppg	ppg
Slurry Fluid Volume Stage	SLRY VOL STG-bbls	bbl
Slurry Fluid Volume Job	SLRY VOL TOT-bbls	bbl

**BREAK THROUGH.**



{2} PLUG TO ABANDON - Relative Time Chart [36-001323-01-2-RT-1]

**BREAK THROUGH.**

Post Job Summary

Pressure Test	3300psi
Initial Circulating Rate	1BPM
Initial Circulating Pressure	1515PSI
Lead Slurry Sacks	150SKS CLASS G NEAT
Lead Slurry Volume	31.5BBLS MIXED @ 15.6#, 1.18 YIELD, 5.2WR
Tail Slurry Sacks	
Tail Slurry Volume	
Bottom Plug Displacement	
Top Plug Displacement	
Cmt Vol Circulated to Surface	
Average Displacement Rate	
Final Circulating Rate	
Final Circulating Pressure	
Plug Bumped?	
Pressure When Plug Bumped	
Floats Hold?	

PUMPED 4.6BBLS INTO THE PERFS.



JOB LOG

TICKET NUMBER

1323

TICKET DATE

June 17, 2009

COUNTRY

USA

AREA

ROCKIES

BDA / STATE

New Mexico

COUNTY

Santa Fe

SUPERVISOR

Sheldon Jones

API #

COMPANY

Tecton Energy

JOB TYPE

P&A

CUSTOMER REP/PHONE #

Roy Johnson

CONTRACTOR

Key

LEASE / WELL #

Black Ferrill #1

SECTION / TOWNSHIP / RANGE

[illegible]

Job Summary Sheet

Job Type

P&A

Casing Conductor Surface Intermediate Production Drill Pipe/Tbg Open Hole	Size	Weight	Thread	Grade	Depth
	3 1/2	9.2			2,764
		N/A	N/A	N/A	

INFORMATION

Spacer Bbls

Spacer Type H20

Lead Additives	Class G Class G Neat	150 Sacks
-------------------	-------------------------	-----------

Weight (lb/gal)	15.60	Yield (cuft/sk)	1.18	Water (gal/sk)	5.22
-----------------	-------	-----------------	------	----------------	------

Tail Additives		Sacks
-------------------	--	-------

Weight (lb/gal)		Yield (cuft/sk)		Water (gal/sk)	
-----------------	--	-----------------	--	----------------	--

NITROGEN
SCF

SCF

ACID

GALS

ADDITIVES

#VALUE!

Displacement H20

8.33 (lb/gal)

CEMENTING EQUIPMENT

Provider

SUPERIOR WELLS SERVICE

Guide Shoe

ea.

Centralizers

ea.

Float Shoe

ea.

Turbos

ea.

Float Collar

ea.

Stop Ring

ea.

Insert Float

ea.

Threadlock

ea.

