

District I
1625 N. French Dr., Hobbs, NM 88240

District II
811 South First, Artesia, NM 88210

District III
1000 Rio Brazos Rd., Aztec, NM 87410

District IV
2040 South Pacheco, Santa Fe, NM 87505

State of New Mexico
Energy, Minerals & Natural Resources Department

Form C-102

Revised October 18, 1994

Instructions on back

Submit to Appropriate District Office

State Lease - 4 Copies

Fee Lease - 3 Copies

OIL CONSERVATION DIVISION
2040 South Pacheco
Santa Fe, NM 87505

RECEIVED JUN 9 PM 1 58

☒ AMENDED REPORT

WELL LOCATION AND ACREAGE DEDICATION PLAT

| | | |
|-----------------------------|--|---|
| API Number 30-021- 20421 | Pool Code 96010 | Pool Name BRAVO DOME CARBON DIOXIDE GAS 640 160 |
| Property Code 27111 | Property Name BRAVO DOME CARBON DIOXIDE GAS UNIT 1831 | Well Number 251 |
| OGRID No. 16696 | Operator Name OXY USA INC. | Elevation 4482.3 |

Surface Location

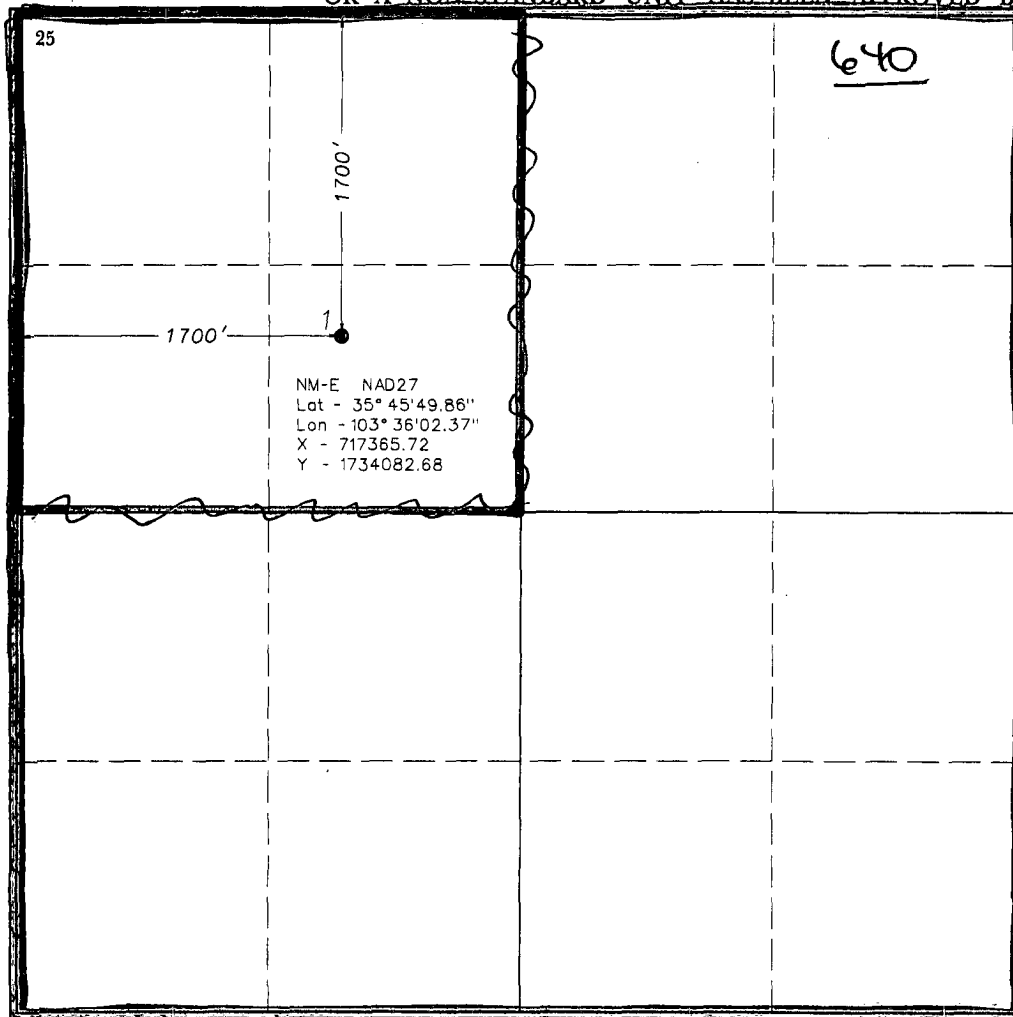
| | | | | | | | | | |
|--------------------|---------------|------------------|---------------|----------|------------------------|---------------------------|------------------------|------------------------|-------------------|
| UL or lot no. F | Section 25 | Township 18 N | Range 31 E | Lot Idn. | Feet from the 1700' | North/South line NORTH | Feet from the 1700' | East/West line WEST | County HARDING |
|--------------------|---------------|------------------|---------------|----------|------------------------|---------------------------|------------------------|------------------------|-------------------|

Bottom Hole Location If Different From Surface

| | | | | | | | | | |
|---------------|---------|----------|-------|----------|---------------|------------------|---------------|----------------|--------|
| UL or lot no. | Section | Township | Range | Lot Idn. | Feet from the | North/South line | Feet from the | East/West line | County |
|---------------|---------|----------|-------|----------|---------------|------------------|---------------|----------------|--------|

| | | | |
|-------------------------------|----------------------|--------------------|-----------|
| Dedicated Acres 640 160 | Joint or Infill N | Consolidation Code | Order No. |
|-------------------------------|----------------------|--------------------|-----------|

NO ALLOWABLE WILL BE ASSIGNED TO THIS COMPLETION UNTIL ALL INTERESTS HAVE BEEN CONSOLIDATED
OR A NON-STANDARD UNIT HAS BEEN APPROVED BY THE DIVISION



OPERATOR CERTIFICATION

I hereby certify that the information contained herein is true and complete to the best of my knowledge and belief.

David Stewart
Signature

David Stewart

Printed Name

Sr. Regulatory Analyst

Title

6/3/08 5/1/07

Date

SURVEYOR CERTIFICATION

I hereby certify that the well location shown on this plat was plotted from field notes of actual surveys made by me or under my supervision, and that the same is true and correct to the best of my belief.

November 10, 2006

Date of Survey

Signature and Seal of Professional Surveyor

Terry Asel
Terry Asel
2/19/2007

Certificate Number 15079