

District I
1625 N. French Dr., Hobbs, NM 88240
District II
1301 W. Grand Avenue, Artesia, NM 88210
District III
1000 Rio Brazos Road, Aztec, NM 87410
District IV
1220 S. Francis Dr., Santa Fe, NM 87505

State of New Mexico
Energy Minerals and Natural Resources

Form C-101
Revised March 17, 1999

Oil Conservation Division
1220 S. St. Francis Dr.
Santa Fe, NM 87505

Submit to appropriate District Office
State Lease - 6 Copies
Fee Lease - 5 Copies

☐ AMENDED REPORT

APPLICATION FOR PERMIT TO DRILL, RE-ENTER, DEEPEN, PLUGBACK, OR ADD A ZONE

¹ Operator Name and Address Prairie Sun, Inc. 10713 Ranch Rd 620 N. Bldg F, Suite 621 Austin, TX 78726		² OGRID Number 173235
		³ API Number 30 - 037-28039 20553
⁴ Property Code 30921	⁵ Property Name JOHN DAVID	⁶ Well No. 1

⁷ Surface Location

UL or lot no.	Section	Township	Range	Lot Idn	Feet from the	North/South line	Feet from the	East/West line	County
G	19	10N	27E		1980	NORTH	1980	EAST	QUAY

⁸ Proposed Bottom Hole Location If Different From Surface

UL or lot no.	Section	Township	Range	Lot Idn	Feet from the	North/South line	Feet from the	East/West line	County
⁹ Proposed Pool 1 WILDCAT					¹⁰ Proposed Pool 2				

¹¹ Work Type Code N	¹² Well Type Code G	¹³ Cable/Rotary R	¹⁴ Lease Type Code P	¹⁵ Ground Level Elevation 4405'
¹⁶ Multiple N	¹⁷ Proposed Depth 7500	¹⁸ Formation GRANITE	¹⁹ Contractor KEY	²⁰ Spud Date ASAP

²¹ Proposed Casing and Cement Program

Hole Size	Casing Size	Casing weight/foot	Setting Depth	Sacks of Cement	Estimated TOC
17 1/2"	13 3/8"	48#	350'	400 Sx	Circulate
11"	8 5/8"	32#	3600'	2000 Sx	350'
7 7/8"	5 1/2"	17#	7500'	1200 Sx.	3500'

²² Describe the proposed program. If this application is to DEEPEN or PLUG BACK, give the data on the present productive zone and proposed new productive zone.
Describe the blowout prevention program, if any. Use additional sheets if necessary.

Operator proposes to drill 17 1/2" hole to 350' and set 13 3/8" csg. Casing will be cemented to surface to protect fresh water. 11" Double Ram BOP's with 3000 psi WP will be installed and tested. 11" hole will be drill into the top of the Abo formation at 3600' and 8 5/8" csg will be run and cemented to isolate the salt and intermediate formations. The BOP, Csg head and csg will be tested to 3000 psi. A 7 7/8" hole will be drilled to TD into the Granite to test for commercial hydrocarbons. Electric logs will be run and 5 1/2" casing will be set and cemented to cover all pay zones. The well will be perforated and evaluated for commercial production. Each perforated interval will be stimulated as necessary. BOP Diagram is attached.

²³ I hereby certify that the information given above is true and complete to the best of my knowledge and belief.

Signature: *Gene Lee*

Printed name: Gene Lee

Title: Agent

Date: 11/28/02

Phone: 505/622/7355

OIL CONSERVATION DIVISION

Approved by: *[Signature]*

Title: DISTRICT SUPERVISOR

Approval Date: 12/4/02

Expiration Date: 12/4/03

Conditions of Approval:

Attached ☐

State of New Mexico

Energy, Minerals and Natural Resources Department

DISTRICT I

P.O. Box 1980, Hobbs, NM 88241-1980

DISTRICT II

P.O. Drawer DD, Artesia, NM 88211-0719

DISTRICT III

1000 Rio Brazos Rd., Artec, NM 87410

DISTRICT IV

P.O. BOX 2088, SANTA FE, N.M. 87504-2088

OIL CONSERVATION DIVISION

P.O. Box 2088

Santa Fe, New Mexico 87504-2088

Form C-102

Revised February 10, 1994

Submit to Appropriate District Office

State Lease - 4 Copies

Fee Lease - 3 Copies

WELL LOCATION AND ACREAGE DEDICATION PLAT

☐ AMENDED REPORT

API Number 30-037-20033	Pool Code	Pool Name <i>Wildcat</i>
Property Code	Property Name JOHN DAVID	Well Number 1
OGRID No. 173235	Operator Name CKG ENERGY	Elevation 4405'

Surface Location

UL or lot No. G	Section 19	Township 10-N	Range 27-E	Lot Idn	Feet from the 1980	North/South line NORTH	Feet from the 1980	East/West line EAST	County QUAY
---------------------------	----------------------	-------------------------	----------------------	---------	------------------------------	----------------------------------	------------------------------	-------------------------------	-----------------------

Bottom Hole Location If Different From Surface

UL or lot No.	Section	Township	Range	Lot Idn	Feet from the	North/South line	Feet from the	East/West line	County
Dedicated Acres	Joint or Infill	Consolidation Code	Order No.						

NO ALLOWABLE WILL BE ASSIGNED TO THIS COMPLETION UNTIL ALL INTERESTS HAVE BEEN CONSOLIDATED
OR A NON-STANDARD UNIT HAS BEEN APPROVED BY THE DIVISION

LOT 1									
37.51 AC LOT 2									
37.52 AC LOT 3									
37.55 AC LOT 4									
37.57 AC									

1980'

1980'

GEODETIC COORDINATES
NAD 27 NMEZ
Y=1484252.4
X=565676.5
LAT. 35°04'46.05"N
LONG. 104°06'49.75"W

OPERATOR CERTIFICATION

I hereby certify that the information contained herein is true and complete to the best of my knowledge and belief.

Gene Lee
Signature

GENE LEE
Printed Name

Agent
Title

11-28-02
Date

SURVEYOR CERTIFICATION

I hereby certify that the well location shown on this plat was plotted from field notes of actual surveys made by me or under my supervision, and that the same is true and correct to the best of my belief.

NOVEMBER 26, 2002

Date Surveyed AWB

Signature & Seal of Professional Surveyor

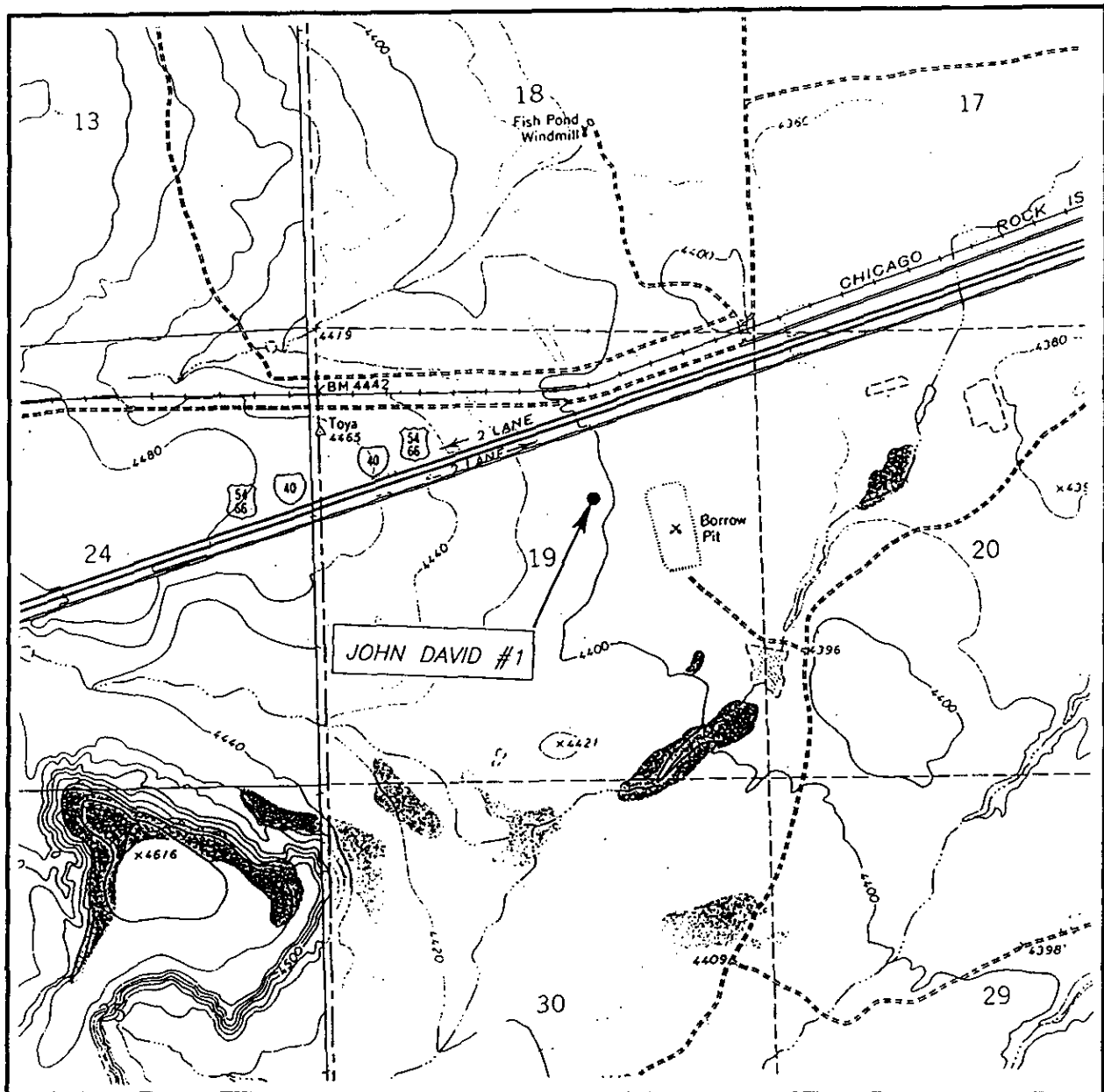
Ronald J. Eidson 11/27/02

02.11.0916

Certificate No. **RONALD J. EIDSON 3239**
GARY EIDSON 12641

REV. #2 8/27/02

LOCATION VERIFICATION MAP



SCALE: 1" = 2000'

CONTOUR INTERVAL: 20'
MONTOKA, N.M.

SEC. 19 TWP. 10-N RGE. 27-E

SURVEY N.M.P.M.

COUNTY QUAY

DESCRIPTION 1980' FNL & 1980' FEL

ELEVATION 4405'

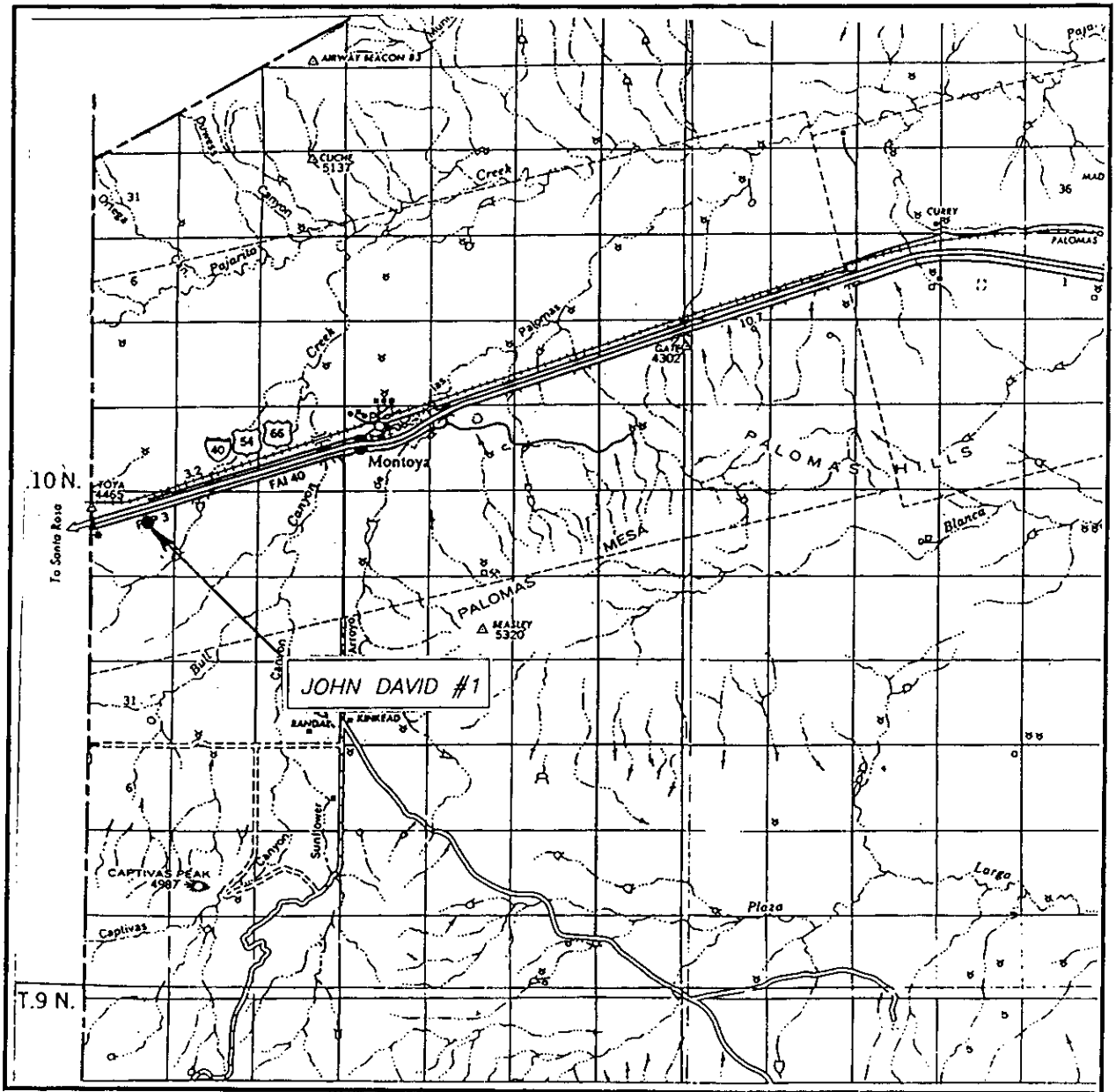
OPERATOR CKG ENERGY

LEASE JOHN DAVID

U.S.G.S. TOPOGRAPHIC MAP
MONTOKA, N.M.

JOHN WEST SURVEYING
HOBBS, NEW MEXICO
(505) 393-3117

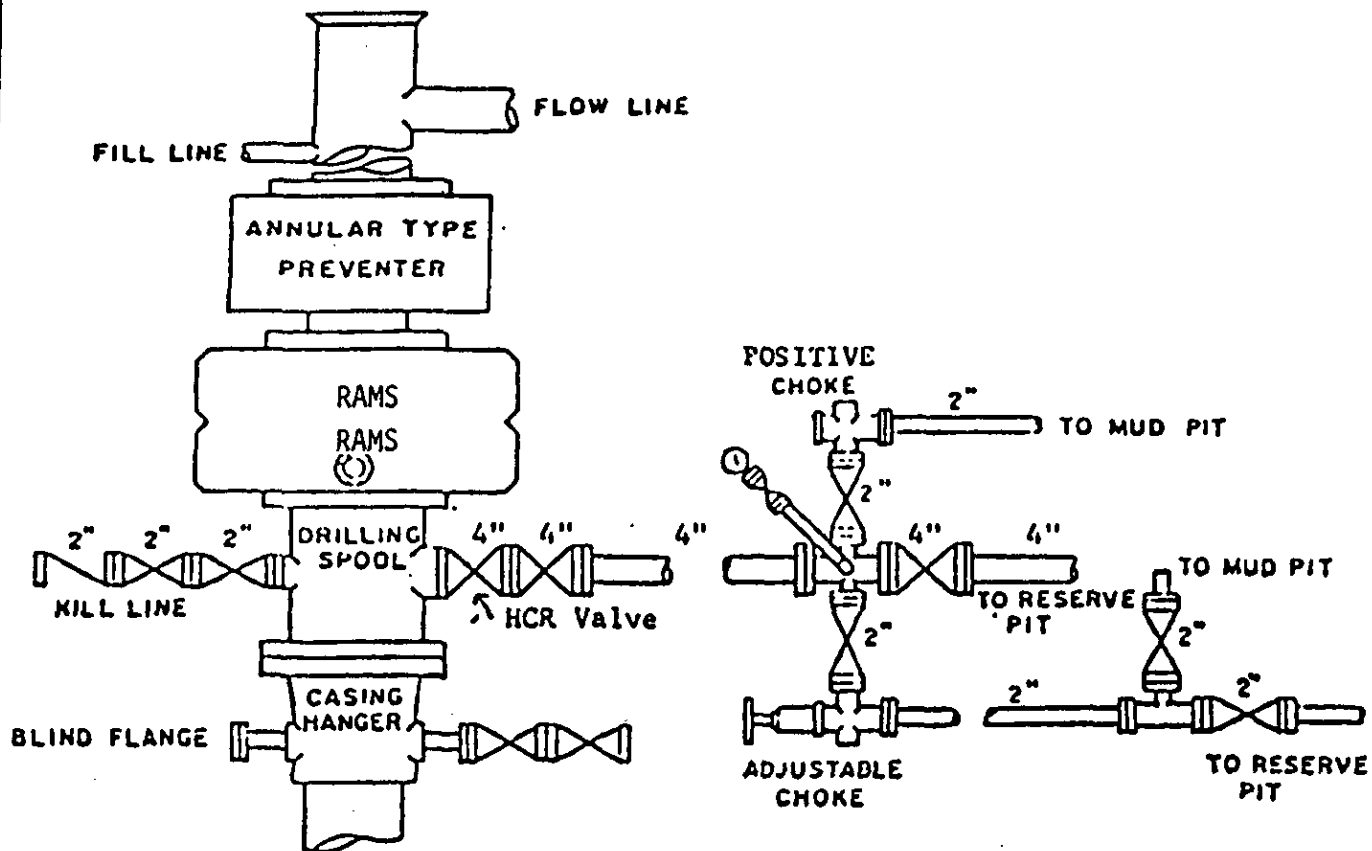
VICINITY MAP



SCALE: 1" = 2 MILES

SEC. 19 TWP. 10-N RGE. 27-E
 SURVEY N.M.P.M.
 COUNTY QUAY
 DESCRIPTION 1980' FNL & 1980' FEL
 ELEVATION 4405'
 OPERATOR CKG ENERGY
 LEASE JOHN DAVID

JOHN WEST SURVEYING
 HOBBS, NEW MEXICO
 (505) 393-3117



BOP STACK

3000 PSI WORKING PRESSURE

BOP ARRANGEMENT