

District I  
1625 N. French Dr., Hobbs, NM 88240  
District II  
1301 W. Grand Avenue, Artesia, NM 88210  
District III  
1000 Rio Brazos Road, Aztec, NM 87410  
District IV  
1220 S. Francis Dr., Santa Fe, NM 87505

State of New Mexico  
Energy Minerals and Natural Resources

Oil Conservation Division  
1220 S. St. Francis Dr.  
Santa Fe, NM 87505

Form C-101  
Revised March 17, 1999

Submit to appropriate District Office  
State Lease - 6 Copies  
Fee Lease - 5 Copies

☐ AMENDED REPORT

APPLICATION FOR PERMIT TO DRILL, RE-ENTER, DEEPEN, PLUGBACK, OR ADD A ZONE

<sup>1</sup> Operator Name and Address Prairie Sun, Inc. / <del>ONE Energy</del> <i>RSJ</i> 10713 RR 620N, Bldg F, Suite 621 Austin, TX. 78726		<sup>2</sup> OGRID Number 173235
		<sup>3</sup> API Number 30 037 - 20051
<sup>4</sup> Property Code 30482	<sup>5</sup> Property Name Anna Kathervn	<sup>6</sup> Well No. 1

<sup>7</sup> Surface Location

UL or lot no. 3	Section 19	Township 10N	Range 27E	Lot Idn	Feet from the 1980	North/South line South	Feet from the 660	East/West line West	County Quay
--------------------	---------------	-----------------	--------------	---------	-----------------------	---------------------------	----------------------	------------------------	----------------

<sup>8</sup> Proposed Bottom Hole Location If Different From Surface

UL or lot no.	Section	Township	Range	Lot Idn	Feet from the	North/South line	Feet from the	East/West line	County
<sup>9</sup> Proposed Pool 1 Wildcat					<sup>10</sup> Proposed Pool 2 Wildcat				

<sup>11</sup> Work Type Code N	<sup>12</sup> Well Type Code G	<sup>13</sup> Cable/Rotary Rotary	<sup>14</sup> Lease Type Code P	<sup>15</sup> Ground Level Elevation 4452'
<sup>16</sup> Multiple N	<sup>17</sup> Proposed Depth 8000'	<sup>18</sup> Formation PreCambrian	<sup>19</sup> Contractor Unknown	<sup>20</sup> Spud Date 9-5-02

<sup>21</sup> Proposed Casing and Cement Program

Hole Size	Casing Size	Casing weight/foot	Setting Depth	Sacks of Cement	Estimated TOC
17 1/2"	13 3/8"	48#/Ft	350'	350 sx.	Circulate
11"	8 5/8"	24#, 32#/Ft	3100'	500 sx.	1100'
7 7/8"	5 1/2"	17#	8000'	800 sx.	3000'

<sup>22</sup> Describe the proposed program. If this application is to DEEPEN or PLUG BACK, give the data on the present productive zone and proposed new productive zone.

Describe the blowout prevention program, if any. Use additional sheets if necessary.

17 1/2" hole will be drilled to 350' and 13 3/8" csg will be set and cemented to surface. 3000# WP BOP's will be used throughout the drilling operations and tested daily. BOP's will consist of a double ram configuration and annular preventer. All BOP's will be tested to design working pressures by an independent testing company. 12 1/4" hole will be drilled to 3100' and 8 5/8" csg set and cemented. The casing will be tested to 1500 psi and BOP's tested to 3000 psi. A 7 7/8" hole will be drilled to TD of approx. 8000'. A cut brine, low solids polymer mud will be used with a density of 9 ppg and 38 viscosity. If production is indicated, a string of 5 1/2" csg will be run to TD and cemented with 800 sx cement.

<sup>23</sup> I hereby certify that the information given above is true and complete to the best of my knowledge and belief.

Signature:

Printed name: Gene Lee

Title: Agent

Date: 08/26/02

Phone: 505-622-7355

OIL CONSERVATION DIVISION

Approved by:

Title: DISTRICT SUPERVISOR

Approval Date: 8/30/02

Expiration Date: 8/30/03

Conditions of Approval:

Attached ☐

COLLECT AND SACK SAMPLES FOR  
NEW MEXICO BUREAU OF MINES, SOCORRO  
AT AT LEAST TEN FOOT INTERVALS

OIL CONSERVATION COMMISSION TO BE NOTIFIED  
WITHIN 24 HOURS OF BEGINNING OPERATIONS

## State of New Mexico

Energy, Minerals and Natural Resources Department

## DISTRICT I

P.O. Box 1980, Hobbs, NM 88241-1980

## DISTRICT II

P.O. Drawer DD, Artesia, NM 88211-0719

## DISTRICT III

1000 Rio Brazos Rd., Aztec, NM 87410

## DISTRICT IV

P.O. BOX 2088, SANTA FE, N.M. 87504-2088

## OIL CONSERVATION DIVISION

P.O. Box 2088

Santa Fe, New Mexico 87504-2088

Form C-102

Revised February 10, 1994

Submit to Appropriate District Office

State Lease - 4 Copies

Fee Lease - 3 Copies

## WELL LOCATION AND ACREAGE DEDICATION PLAT

☐ AMENDED REPORT

API Number	Pool Code	Pool Name
Property Code	Property Name ANNA KATHERYN	Well Number 1
OGRID No.	Operator Name PRairie Sun, Inc. / CKG ENERGY	Elevation 4452'

## Surface Location

UL or lot No.	Section	Township	Range	Lot Idn	Feet from the	North/South line	Feet from the	East/West line	County
3	19	10--N	27-E		1980	SOUTH	660	WEST	QUAY

## Bottom Hole Location If Different From Surface

UL or lot No.	Section	Township	Range	Lot Idn	Feet from the	North/South line	Feet from the	East/West line	County
Dedicated Acres	Joint or Infill	Consolidation Code	Order No.						

NO ALLOWABLE WILL BE ASSIGNED TO THIS COMPLETION UNTIL ALL INTERESTS HAVE BEEN CONSOLIDATED  
OR A NON-STANDARD UNIT HAS BEEN APPROVED BY THE DIVISION

LOT 1									
37.51 AC LOT 2									
37.52 AC LOT 3									
37.55 AC LOT 4									
37.57 AC									

660' →

1980' ↓

**OPERATOR CERTIFICATION**

I hereby certify the the information contained herein is true and complete to the best of my knowledge and belief.

*Gene Lee*  
Signature

GENE LEE  
Printed Name

Agent  
Title

8-26-02  
Date

**SURVEYOR CERTIFICATION**

I hereby certify that the well location shown on this plat was plotted from field notes of actual surveys made by me or under my supervision, and that the same is true and correct to the best of my belief.

AUGUST 24, 2002

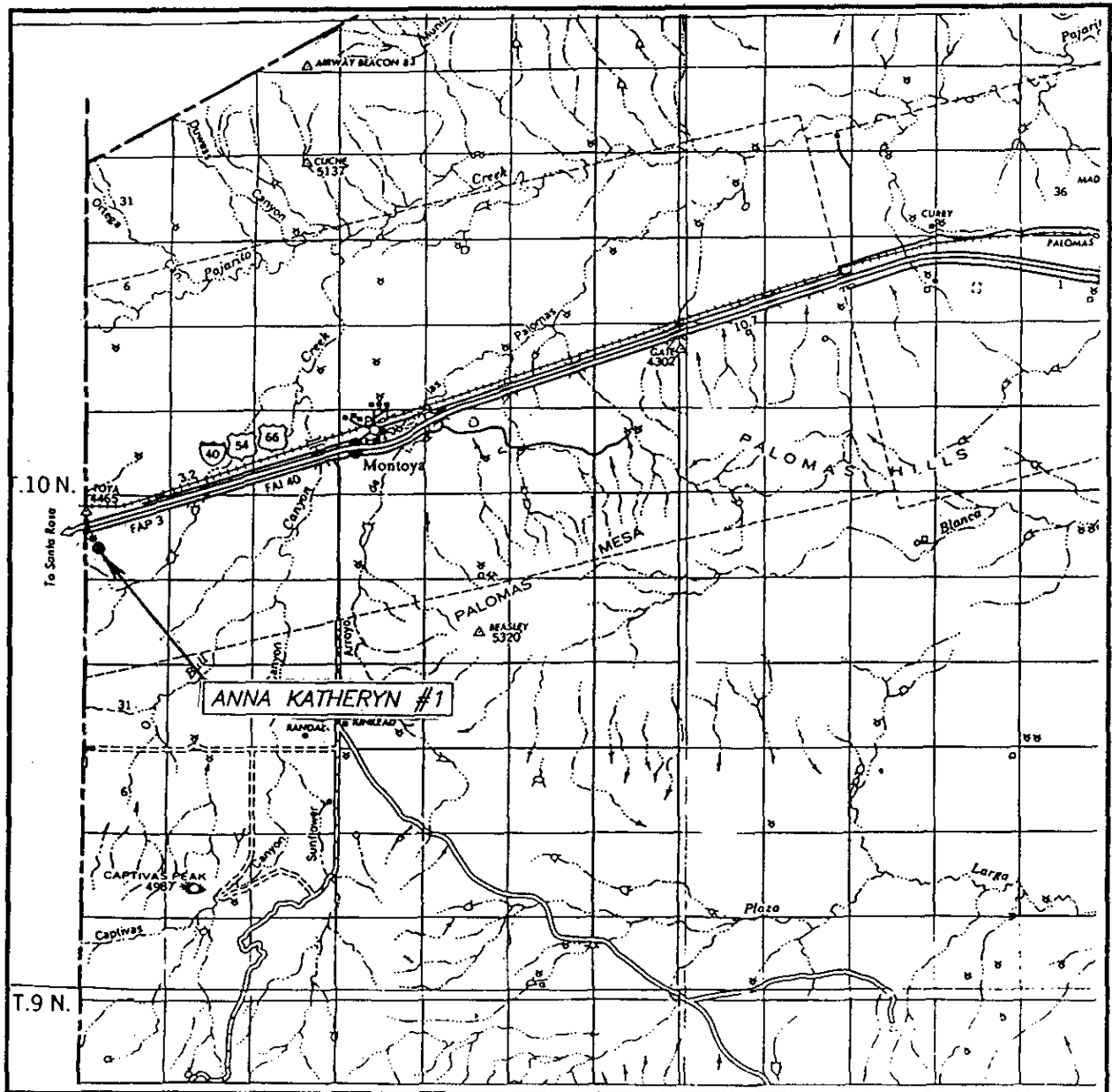
Date Surveyed

Signature & Seal of Professional Surveyor

*Gary B. Edson* 8/27/02  
02.11.0621

Certificate No. RONALD L. EDSON 3239  
GARY EDSON 12641  
REV. 8/27/02

# VICINITY MAP

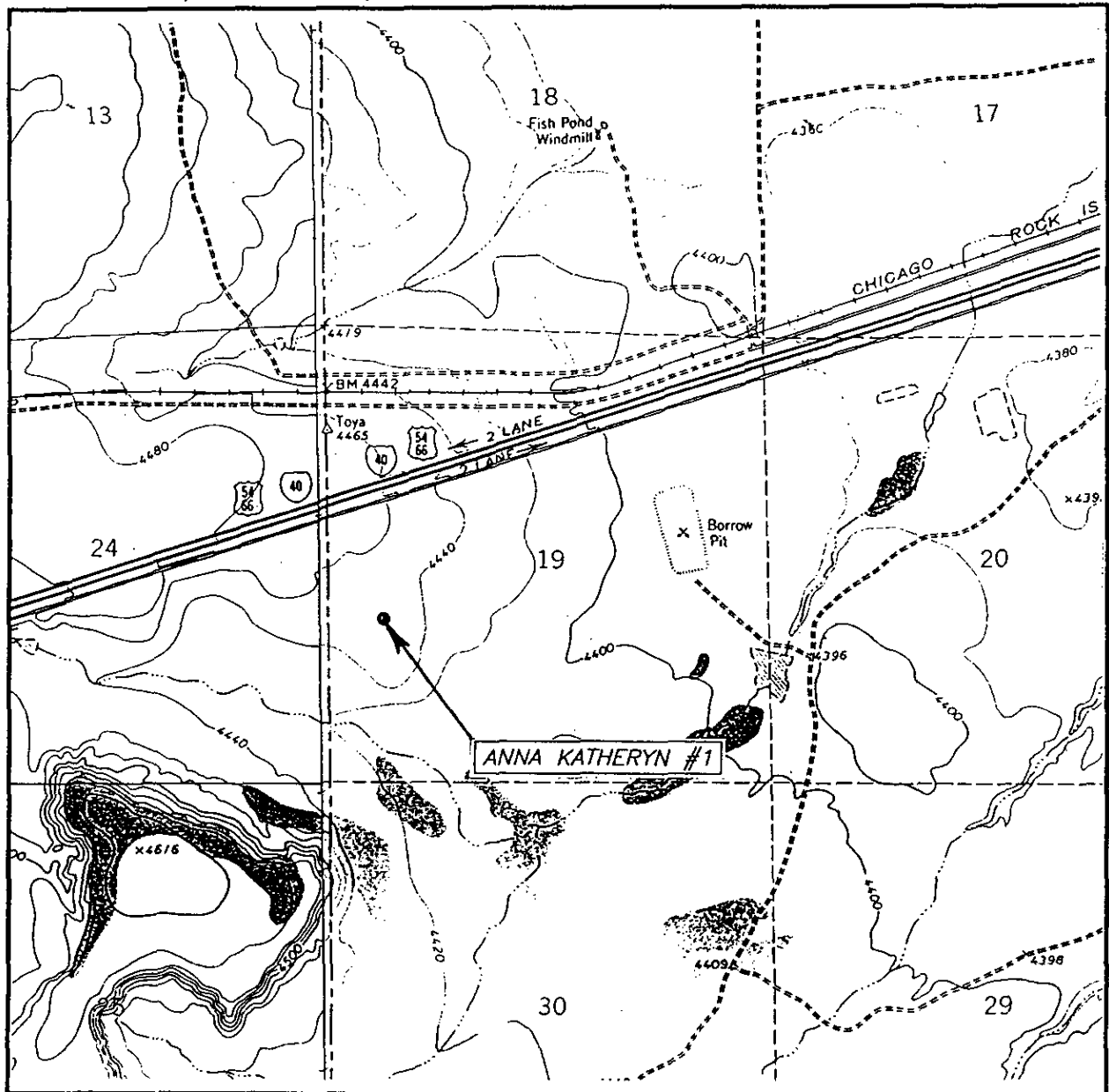


SCALE: 1" = 2 MILES

SEC. 19 TWP. 10-N RGE. 27-E  
 SURVEY N.M.P.M.  
 COUNTY QUAY  
 DESCRIPTION 1980' FSL & 660' FWL  
 ELEVATION 4452'  
 OPERATOR CKG ENERGY  
 LEASE ANNA KATHERYN

JOHN WEST SURVEYING  
 HOBBS, NEW MEXICO  
 (505) 393-3117

# LOCATION VERIFICATION MAP



SCALE: 1" = 2000'

CONTOUR INTERVAL: 20'  
MONTOKA, N.M.

SEC. 19 TWP. 10-N RGE. 27-E

SURVEY N.M.P.M.

COUNTY QUAY

DESCRIPTION 1980' FSL & 660' FWL

ELEVATION 4452'

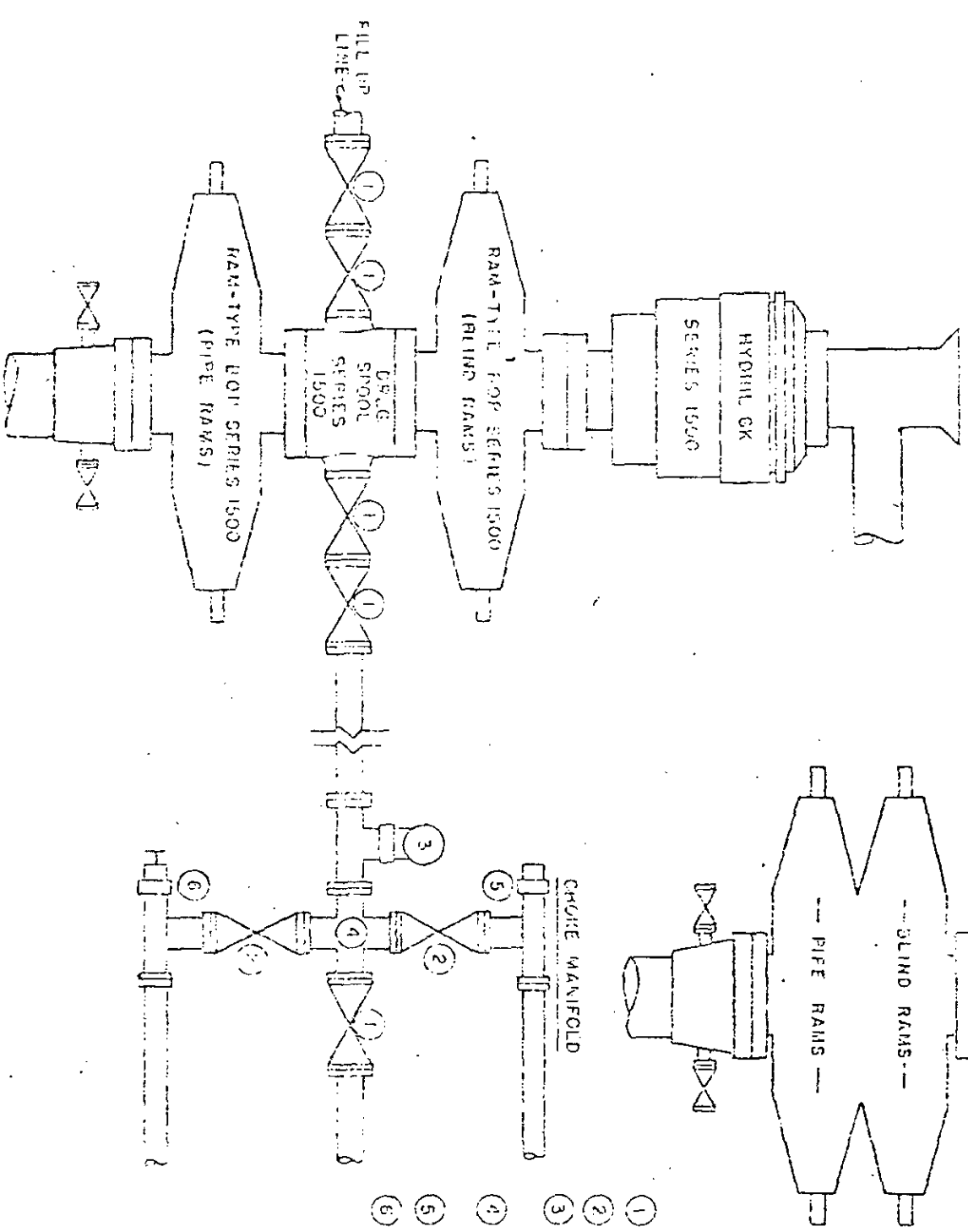
OPERATOR CKG ENERGY

LEASE ANNA KATHERYN

U.S.G.S. TOPOGRAPHIC MAP  
MONTOKA, N.M.

JOHN WEST SURVEYING  
HOBBS, NEW MEXICO  
(505) 393-3117

DOUBLE PREVENTERS



- (1) 3" SERIES 1500 VALVE
- (2) 2" SERIES 1500 VALVE
- (3) 2" RAD PRESSURE CONTROL OR 2" RAD PRESSURE CONTROL
- (4) 3" SERIES 1500 X 2" STEEL CROSS
- (5) 2" SERIES 1500 POSITIVE CROSS
- (6) 2" SERIES 1500 ADJUSTABLE CROSS

Prairie Sun, Inc.

Anna Kathryn #1  
 1980 FSL & 660 FWL  
 Sec 19-T10N-R27E  
 Quay County, New Mexico