

DATE IN 4-27-04	SUSPENSE 5/19/04	ENGINEER Jones	LOGGED IN 4-29-04	TYPE DHC	APP NO. D5EM0412037743
-----------------	------------------	----------------	-------------------	----------	------------------------

ABOVE THIS LINE FOR DIVISION USE ONLY

## NEW MEXICO OIL CONSERVATION DIVISION

- Engineering Bureau -

1220 South St. Francis Drive, Santa Fe, NM 87505



DHC-3288

### ADMINISTRATIVE APPLICATION CHECKLIST

THIS CHECKLIST IS MANDATORY FOR ALL ADMINISTRATIVE APPLICATIONS FOR EXCEPTIONS TO DIVISION RULES AND REGULATIONS WHICH REQUIRE PROCESSING AT THE DIVISION LEVEL IN SANTA FE

#### Application Acronyms:

**[NSL-Non-Standard Location]** **[NSP-Non-Standard Proration Unit]** **[SD-Simultaneous Dedication]**  
**[DHC-Downhole Commingling]** **[CTB-Lease Commingling]** **[PLC-Pool/Lease Commingling]**  
**[PC-Pool Commingling]** **[OLS - Off-Lease Storage]** **[OLM-Off-Lease Measurement]**  
**[WFX-Waterflood Expansion]** **[PMX-Pressure Maintenance Expansion]**  
**[SWD-Salt Water Disposal]** **[IPI-Injection Pressure Increase]**  
**[EOR-Qualified Enhanced Oil Recovery Certification]** **[PPR-Positive Production Response]**

#### [1] TYPE OF APPLICATION - Check Those Which Apply for [A]

[A] Location - Spacing Unit - Simultaneous Dedication  
☐ NSL ☐ NSP ☐ SD

Check One Only for [B] or [C]

[B] Commingling - Storage - Measurement  
☒ DHC ☐ CTB ☐ PLC ☐ PC ☐ OLS ☐ OLM

[C] Injection - Disposal - Pressure Increase - Enhanced Oil Recovery  
☐ WFX ☐ PMX ☐ SWD ☐ IPI ☐ EOR ☐ PPR

[D] Other: Specify \_\_\_\_\_

#### [2] NOTIFICATION REQUIRED TO: - Check Those Which Apply, or ☐ Does Not Apply

[A] ☒ Working, Royalty or Overriding Royalty Interest Owners

[B] ☐ Offset Operators, Leaseholders or Surface Owner

[C] ☐ Application is One Which Requires Published Legal Notice

[D] ☒ Notification and/or Concurrent Approval by BLM or SLO  
 U.S. Bureau of Land Management - Commissioner of Public Lands, State Land Office

[E] ☐ For all of the above, Proof of Notification or Publication is Attached, and/or,

[F] ☐ Waivers are Attached

#### [3] SUBMIT ACCURATE AND COMPLETE INFORMATION REQUIRED TO PROCESS THE TYPE OF APPLICATION INDICATED ABOVE.

[4] **CERTIFICATION:** I hereby certify that the information submitted with this application for administrative approval is **accurate** and **complete** to the best of my knowledge. I also understand that **no action** will be taken on this application until the required information and notifications are submitted to the Division.

**Note: Statement must be completed by an individual with managerial and/or supervisory capacity.**

Tammy Wimsatt  
 Print or Type Name

Tammy Wimsatt  
 Signature

Regulatory Specialist  
 Title

4/28/04  
 Date

twimsatt@br-inc.com  
 e-mail Address



District II  
PO Drawer DD, Artesia, NM 88211-0719

District III  
1000 Rio Brazos Rd., Aztec, NM 87410

District IV  
PO Box 2088, Santa Fe, NM 87504-2088

OIL CONSERVATION DIVISION  
PO Box 2088  
Santa Fe, NM 87504-2088

Submit to Appropriate District Office  
State Lease - 4 Copies  
Fee Lease - 3 Copies

☐ AMENDED REPORT

## WELL LOCATION AND ACREAGE DEDICATION PLAT

'API Number	'Pool Code	'Pool Name
30-045-32059	72319/71599/82329	Blanco Mesaverde/Basin Dakota/Otero Chacra
'Property Code	'Property Name	'Well Number
33275	HAMNER FEDERAL	1M
'OGRID No.	'Operator Name	'Elevation
14538	BURLINGTON RESOURCES OIL & GAS COMPANY, LP	5601

<sup>10</sup> Surface Location

UL or lot no.	Section	Township	Range	Lot Idn	Feet from the	North/South line	Feet from the	East/West line	County
G	35	29N	10W		1630	NORTH	1830	EAST	SAN JUAN

<sup>11</sup>Bottom Hole Location If Different From Surface

UL or lot no.	Section	Township	Range	Lot Idn	Feet from the	North/South line	Feet from the	East/West line	County
<sup>12</sup> Dedicated Acres Cha: NE/160 MV/DK: N/320					<sup>13</sup> Joint or Infill	<sup>14</sup> Consolidation Code	<sup>15</sup> Order No.		

NO ALLOWABLE WILL BE ASSIGNED TO THIS COMPLETION UNTIL ALL INTERESTS HAVE BEEN CONSOLIDATED  
OR A NON-STANDARD UNIT HAS BEEN APPROVED BY THE DIVISION

16

5253.60'

USA SF-077082

USA SF-080724A

USA SF-077082

FEE

1630'

1830'

765'

1005'

35

5280.00'

5280.00'

5280.00'

LAT: 36°41.1362' N  
LONG: 107°51.0712' W

17 OPERATOR CERTIFICATION

I hereby certify that the information contained herein is true and complete to the best of my knowledge and belief

*Tammy Wimsatt*

Signature  
Tammy Wimsatt

Printed Name  
Regulatory Specialist

Title  
4-28-04


Date

18 SURVEYOR CERTIFICATION

I hereby certify that the well location shown on this plat was plotted from field notes of actual surveys made by me or under my supervision, and that the same is true and correct to the best of my belief

Date of Survey: APRIL 25, 2003

Signature and Seal of Professional Surveyor



*JASON C. EDWARDS*

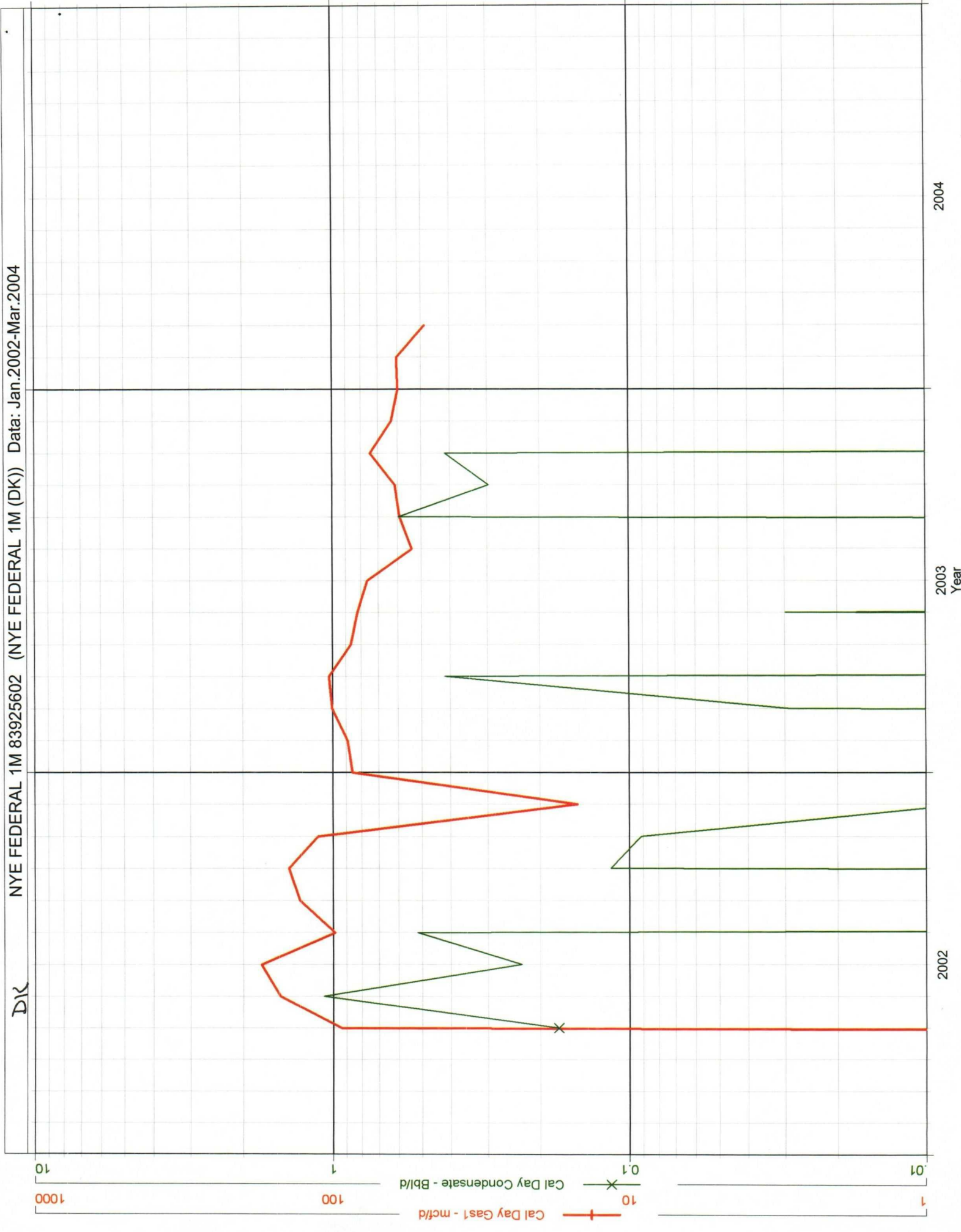
Certificate Number 15269

**Hamer Federal #1M  
(Nye Federal #1M offset)  
Bottom Hole Pressures  
Flowing and Static BHP  
Cullender and Smith Method  
Version 1.0 1/14/98**

Chacra		Mesaverde	
<u>CH-Current</u>		<u>MV-Current</u>	
GAS GRAVITY	0	GAS GRAVITY	0
COND. OR MISC. (C/M)	C	COND. OR MISC. (C/M)	C
%N2	0	%N2	0.00
%CO2	0	%CO2	0
%H2S	0	%H2S	0
DIAMETER (IN)	0	DIAMETER (IN)	0
DEPTH (FT)	0	DEPTH (FT)	0
SURFACE TEMPERATURE (DEG F)	60	SURFACE TEMPERATURE (DEG F)	60
BOTTOMHOLE TEMPERATURE (DEG F)	0	BOTTOMHOLE TEMPERATURE (DEG F)	0
FLOWRATE (MCFPD)	0	FLOWRATE (MCFPD)	0
SURFACE PRESSURE (PSIA)	0	SURFACE PRESSURE (PSIA)	0
BOTTOMHOLE PRESSURE (PSIA)	#DIV/0!	BOTTOMHOLE PRESSURE (PSIA)	#DIV/0!
<u>CH-Original</u>		<u>MV-Original</u>	
GAS GRAVITY	0.72	GAS GRAVITY	0.72
COND. OR MISC. (C/M)	C	COND. OR MISC. (C/M)	C
%N2	0.003	%N2	0.003
%CO2	0.006	%CO2	0.006
%H2S	0	%H2S	0
DIAMETER (IN)	4.5	DIAMETER (IN)	4.5
DEPTH (FT)	3277	DEPTH (FT)	4398
SURFACE TEMPERATURE (DEG F)	60	SURFACE TEMPERATURE (DEG F)	60
BOTTOMHOLE TEMPERATURE (DEG F)	108.4	BOTTOMHOLE TEMPERATURE (DEG F)	125
FLOWRATE (MCFPD)	0	FLOWRATE (MCFPD)	0
SURFACE PRESSURE (PSIA)	625	SURFACE PRESSURE (PSIA)	625
BOTTOMHOLE PRESSURE (PSIA)	685.7	BOTTOMHOLE PRESSURE (PSIA)	706.1

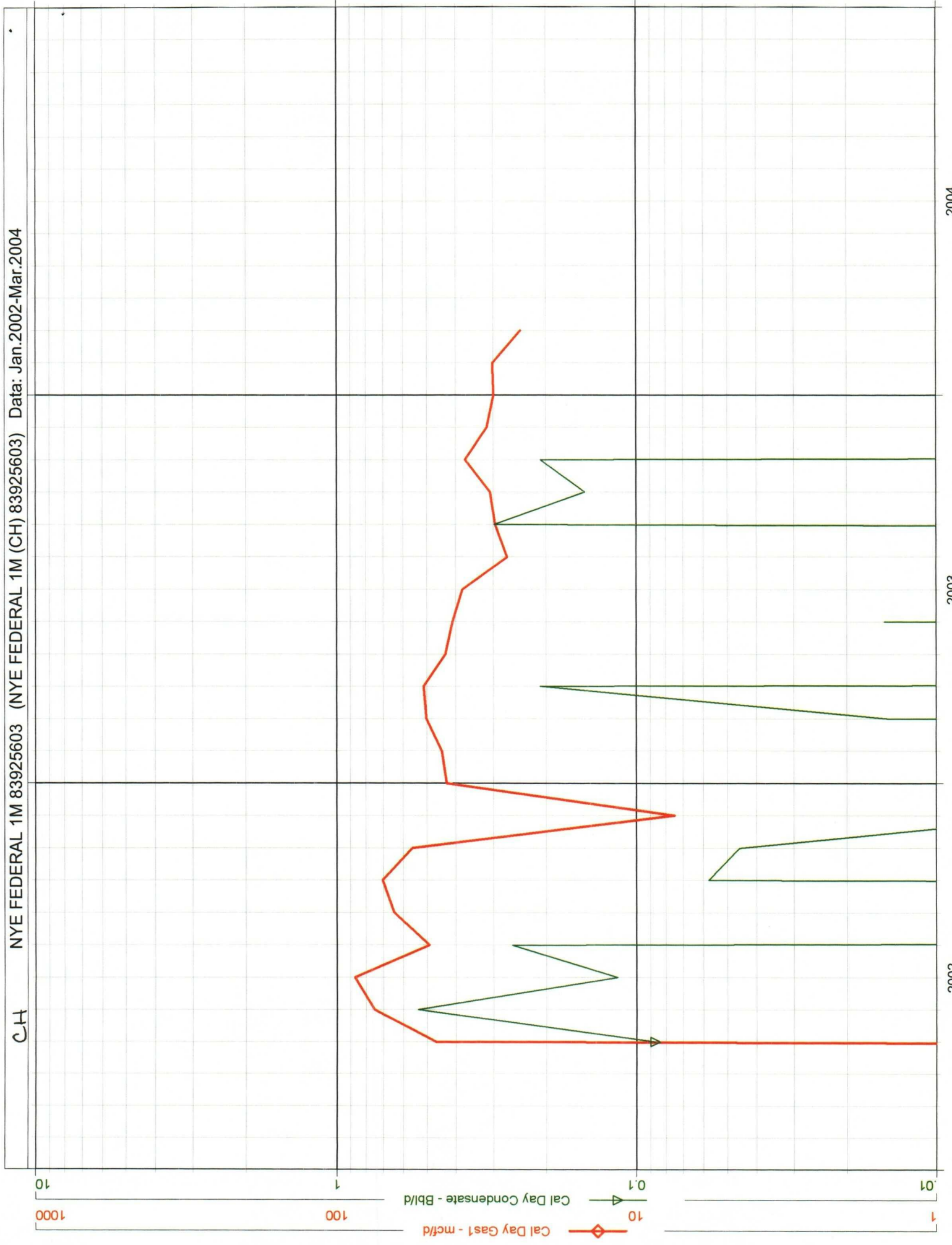
**Hamer Federal #1M**  
**(Nye Federal #1M offset)**  
**Bottom Hole Pressures**  
**Flowing and Static BHP**  
**Cullender and Smith Method**  
Version 1.0 1/14/98

<b>Dakota</b>			
<b><u>DK-Current</u></b>		<b><u>Current</u></b>	
GAS GRAVITY	0	GAS GRAVITY	0
COND. OR MISC. (C/M)	C	COND. OR MISC. (C/M)	C
%N2	0	%N2	0.00
%CO2	0	%CO2	0
%H2S	0	%H2S	0
DIAMETER (IN)	0	DIAMETER (IN)	0
DEPTH (FT)	0	DEPTH (FT)	0
SURFACE TEMPERATURE (DEG F)	60	SURFACE TEMPERATURE (DEG F)	60
BOTTOMHOLE TEMPERATURE (DEG F)	0	BOTTOMHOLE TEMPERATURE (DEG F)	0
FLOWRATE (MCFPD)	0	FLOWRATE (MCFPD)	0
SURFACE PRESSURE (PSIA)	0	SURFACE PRESSURE (PSIA)	0
BOTTOMHOLE PRESSURE (PSIA)	#DIV/0!	BOTTOMHOLE PRESSURE (PSIA)	#DIV/0!
<b><u>DK-Original</u></b>		<b><u>Original</u></b>	
GAS GRAVITY	0.72	GAS GRAVITY	0
COND. OR MISC. (C/M)	C	COND. OR MISC. (C/M)	C
%N2	0.003	%N2	0.00
%CO2	0.006	%CO2	0
%H2S	0	%H2S	0
DIAMETER (IN)	2.375	DIAMETER (IN)	0
DEPTH (FT)	6654.5	DEPTH (FT)	0
SURFACE TEMPERATURE (DEG F)	60	SURFACE TEMPERATURE (DEG F)	60
BOTTOMHOLE TEMPERATURE (DEG F)	158.3	BOTTOMHOLE TEMPERATURE (DEG F)	0
FLOWRATE (MCFPD)	0	FLOWRATE (MCFPD)	0
SURFACE PRESSURE (PSIA)	625	SURFACE PRESSURE (PSIA)	0
BOTTOMHOLE PRESSURE (PSIA)	746.7	BOTTOMHOLE PRESSURE (PSIA)	#DIV/0!











HAMNER FEDERAL 1M  
CHACRA/MESAVERDE/DAKOTA

1 ALVIS JACK MCBEE  
2 AMERICAN ASSURANCE 2000, LP  
3 ASHLEY & SUSAN BRACKEN  
4 BANK OF AMERICA  
5 BANK OF AMERICA NA TRUSTEE  
6 BARBARA REESE DINGES  
7 BETTY T JOHNSTON/LYLE E  
8 BUREAU OF LAND MANAGEMENT  
9 CHARLA KATHLEEN ROCHE  
10 CHASE OIL CORPORATION  
11 CLAIR H BLACK &  
12 CLAUDIA MARCIA LUNDELL GILMER  
13 CONOCOPHILLIPS COMPANY  
14 D MARTIN PHILLIPS AND LIANE M  
15 D R ZACHRY JR  
16 DAVID ELBERT REESE  
17 DAVID HENDERSON  
18 E C FIEDOREK TRUSTEE  
19 ELIZABETH GOODWIN REESE  
20 FHW OIL & GAS LTD  
21 GARY R PETERSEN  
22 GRIFFITH AND STONE ROYALTY  
23 HOWARD M MCBEE ESTATE  
24 HUGH BLACK  
25 JAMES L FASHING  
26 JAMES L IRISH III TRUSTEE  
27 JANICE ROBERTSON  
28 JERRY J ANDREW  
29 JO ANN PETERSEN  
30 JOHN L MITCHELL  
31 KAVANNAGH-SHIERSHKE FAMILY TRUST  
32 LINDA JEANNE LUNDELL LINDSEY  
33 LUCILLE BUNCE  
34 M SEAN SMITH  
35 MARTHA JO WILSON  
36 MARTHA LUCKETT  
37 MARY ELIZABETH HOLT  
38 MARY THURMAN TODD &  
39 MICHAEL DWAYNE BLACK  
40 MICHELE D ALEXANDER  
41 NATIONSBANK  
42 PEAK ENERGY RESOURCES INC  
43 PURE RESOURCES LP  
44 REBECCA ANN REESE WARD  
45 REX BLACK  
46 RICHARD ALAN BOYD  
47 RICHARDSON W ROBERTSON  
48 ROBERT E BEAMON III  
49 ROBERT L ZORICH  
50 ROBERT WALTER LUNDELL  
51 ROGERS FAMILY TRUST  
52 ROGERS-GIBBARD TRUST  
53 ROSEMARY MORIARTY  
54 SAMUEL D HAAS  
55 SAN JUAN BASIN POOL LTD  
56 SUSANNA B MCBEE  
57 TERENCE A ROBERTSON  
58 THURMAN FAMILY LLC  
59 V A JOHNSTON FAMILY TRUST  
60 WP TRAYLOR/JG HEARD-IND EXECS/