

ABOVE THIS LINE FOR DIVISION USE ONLY

NEW MEXICO OIL CONSERVATION DIVISION
- Engineering Bureau -
 1220 South St. Francis Drive, Santa Fe, NM 87505



ADMINISTRATIVE APPLICATION CHECKLIST

THIS CHECKLIST IS MANDATORY FOR ALL ADMINISTRATIVE APPLICATIONS FOR EXCEPTIONS TO DIVISION RULES AND REGULATIONS WHICH REQUIRE PROCESSING AT THE DIVISION LEVEL IN SANTA FE

Application Acronyms:

[NSL-Non-Standard Location] [NSP-Non-Standard Proration Unit] [SD-Simultaneous Dedication]
[DHC-Downhole Commingling] [CTB-Lease Commingling] [PLC-Pool/Lease Commingling]
[PC-Pool Commingling] [OLS - Off-Lease Storage] [OLM-Off-Lease Measurement]
[WFX-Waterflood Expansion] [PMX-Pressure Maintenance Expansion]
[SWD-Salt Water Disposal] [IPI-Injection Pressure Increase]
[EOR-Qualified Enhanced Oil Recovery Certification] [PPR-Positive Production Response]

[1] TYPE OF APPLICATION - Check Those Which Apply for [A]

[A] Location - Spacing Unit - Simultaneous Dedication
☐ NSL ☐ NSP ☐ SD

Check One Only for [B] or [C]

[B] Commingling - Storage - Measurement
☐ DHC ☐ CTB ☐ PLC ☐ PC ☐ OLS ☐ OLM

[C] Injection - Disposal - Pressure Increase - Enhanced Oil Recovery
☐ WFX ☐ PMX ☐ SWD ☐ IPI ☐ EOR ☐ PPR

[D] Other: Specify _____

[2] NOTIFICATION REQUIRED TO: - Check Those Which Apply, or ☐ Does Not Apply

- [A] ☐ Working, Royalty or Overriding Royalty Interest Owners**
- [B] ☐ Offset Operators, Leaseholders or Surface Owner**
- [C] ☐ Application is One Which Requires Published Legal Notice**
- [D] ☐ Notification and/or Concurrent Approval by BLM or SLO**
U.S. Bureau of Land Management - Commissioner of Public Lands, State Land Office
- [E] ☐ For all of the above, Proof of Notification or Publication is Attached, and/or,**
- [F] ☐ Waivers are Attached**

[3] SUBMIT ACCURATE AND COMPLETE INFORMATION REQUIRED TO PROCESS THE TYPE OF APPLICATION INDICATED ABOVE.

[4] CERTIFICATION: I hereby certify that the information submitted with this application for administrative approval is **accurate** and **complete** to the best of my knowledge. I also understand that **no action** will be taken on this application until the required information and notifications are submitted to the Division.

Note: Statement must be completed by an individual with managerial and/or supervisory capacity.

| | | | |
|-----------------------------|--------------------|----------------|---------------|
| _____ Print or Type Name | _____ Signature | _____ Title | _____ Date |
| _____ e-mail Address | | | |

*talked w
Linda @
8:00AM 9-13-2004*

*Linda
Guthrie*

*LINDA GUTHRIE
@
DUN.COM*



Devon Energy Corporation
20 North Broadway
Oklahoma City, Oklahoma 73102-8260

FAX

To: MIKE STOGNER

From: KEN GRAY

Fax: 505-476-3462

Date: 9/8/04

Phone:

Pages: 5 (including cover page)

Re: APACHE 24 F20 #9

CC:

☐ Urgent☒ For Review☐ Please Comment☐ Please Reply☐ Please Recycle

• Comments:



Devon Energy Corporation
20 North Broadway
Oklahoma City, Oklahoma 73102-8260
Fax 405-552-8113

September 8, 2004

New Mexico Oil Conservation Division
1220 South St. Francis Drive
Santa Fe, NM 87505
Attn: Michael Stogner

RE: Apache 24 Federal #9
Section 24-T22S-R30E
Eddy County, New Mexico

Gentlemen:

Devon Energy Production Company, L.P. ("Devon"), as Operator, intends to drill the referenced horizontal Delaware well to a total vertical depth of 7,615' with a total measured depth of 11,681'. As reflected on the attached C-102, the well has been permitted at a surface location of 330' FEL and 1,386' FSL with a permitted bottom hole location of 2,310' FSL and 330' FWL of Section 24. The initial portion of the open hole (and potentially productive) horizontal section of the well will be located 1,261.55' FEL and 1,572.31' FSL which is an unorthodox location.

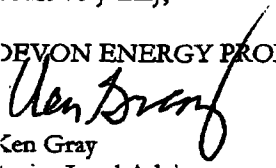
Inasmuch as the initial portion of the open hole horizontal section of the referenced well is located at an unorthodox location from that permitted by the Statewide Pool Rules, Devon respectfully requests that the Commission administratively approve this application for an unorthodox location in accordance with Division Rule 104(F)(3). This unorthodox location affects the leasehold owner in Unit letters J, O, & P. Devon is the owner of 100% Record Title of Federal Lease NM 89051 which covers Unit letters J, O & P, among other lands. Therefore, no additional notification of this application should be required as this unorthodox location will affect Devon leasehold only.

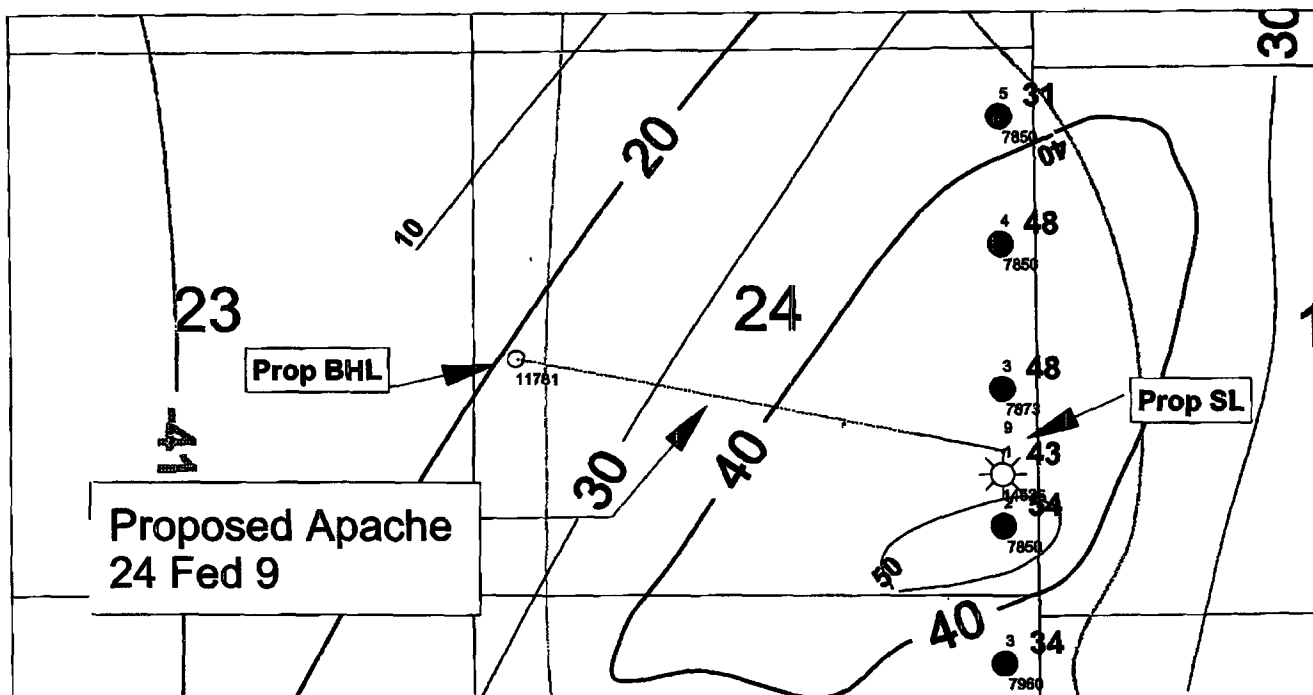
Attached for your review you will find a land plat reflecting Devon as the only affected party, a net sand isopach covering the Lower Brushy Canyon D sand, a State of New Mexico form C-102, and a Well Profile plat prepared by Baker Hughes.


Feel free to contact the undersigned at (405) 552-4633 if there are any concerns or questions regarding this application.

Yours very truly,

DEVON ENERGY PRODUCTION COMPANY, L.P.


Ken Gray
Senior Land Advisor
KG\Apache 24-9 UL
Enclosure



| | | |
|---|--------------------------|-----------------------------------|
|  | | |
| Todd Federal Area T23S R31E New Mexico Top Lower Brushy Canyon D sand structure and Net sand isopach | | |
| Author: DE O'Bright | | Date: 7 September, 2004 |
| | Scale: <scale> | |

DISTRICT I

1685 N. French Dr., Hobbs, NM 88240

DISTRICT II

811 South First, Artesia, NM 88210

DISTRICT III

1000 Rio Brazos Rd., Aztec, NM 87410

DISTRICT IV

2040 South Pecos, Santa Fe, NM 87505

State of New Mexico

Energy, Minerals and Natural Resources Department

Form C-102

Revised March 17, 1999

Submit to Appropriate District Office

State Lease - 4 Copies

Fee Lease - 3 Copies

OIL CONSERVATION DIVISION

2040 South Pecos

Santa Fe, New Mexico 87504-2088

☐ AMENDED REPORT

WELL LOCATION AND ACREAGE DEDICATION PLAT

| | | |
|---------------|--|--------------------|
| API Number | Pool Code | Pool Name |
| Property Code | Property Name APACHE "24" FEDERAL | Well Number 9 |
| OGRI No. | Operator Name DEVON ENERGY PRODUCTION CO., L.P. | Elevation 3404' |

Surface Location

| UL or lot No. | Section | Township | Range | Lot Idn | Feet from the | North/South line | Feet from the | East/West line | County |
|---------------|---------|----------|-------|---------|---------------|------------------|---------------|----------------|--------|
| 1 | 24 | 22 S | 30 E | | 1386 | SOUTH | 330 | EAST | EDDY |

Bottom Hole Location If Different From Surface

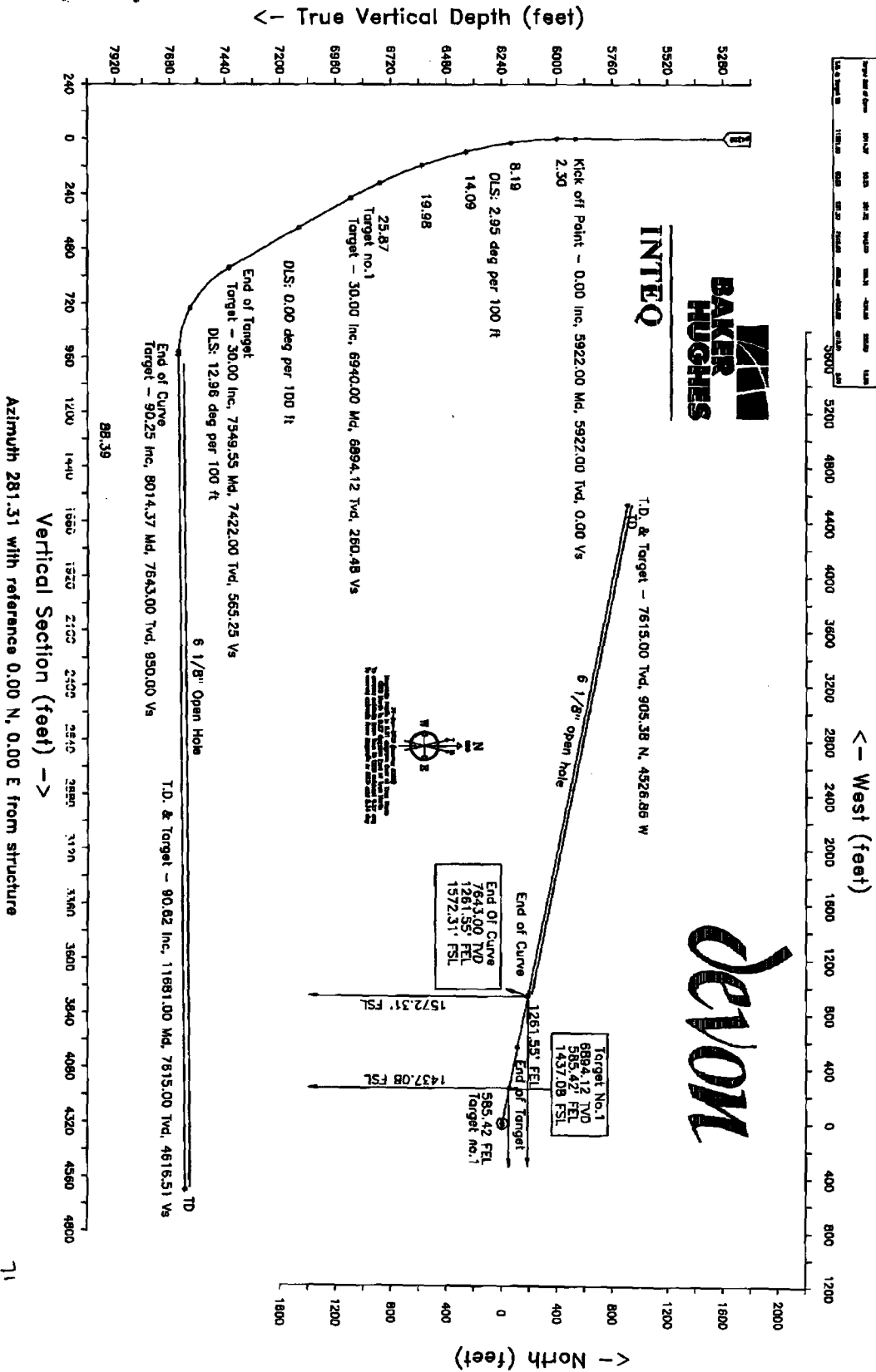
| UL or lot No. | Section | Township | Range | Lot Idn | Feet from the | North/South line | Feet from the | East/West line | County |
|-----------------|-----------------|--------------------|-----------|---------|---------------|------------------|---------------|----------------|--------|
| L | 24 | 22 S | 30 E | | 2310 | SOUTH | 330 | WEST | EDDY |
| Dedicated Acres | Joint or Infill | Consolidation Code | Order No. | | | | | | |

NO ALLOWABLE WILL BE ASSIGNED TO THIS COMPLETION UNTIL ALL INTERESTS HAVE BEEN CONSOLIDATED
OR A NON-STANDARD UNIT HAS BEEN APPROVED BY THE DIVISION

| | | |
|--|--|--|
| | OPERATOR CERTIFICATION I hereby certify that the information contained herein is true and complete to the best of my knowledge and belief. | |
| | Signature _____ Printed Name _____ Title _____ Date _____ | |
| | SURVEYOR CERTIFICATION I hereby certify that the well location shown on this plat was plotted from field notes of actual surveys made by me or under my supervision, and that the same is true and correct to the best of my belief. | |
| | Date Surveyed MAY 6, 2004 Signature & Seal of Professional Surveyor | |

1386
1320
66

| WELL PROFILE DATA | | | | | | | | | | | | | DEVON ENERGY | | | | | | | | | | | | | Created by cadpgram Date plotted : 3-Sep-2004 Plot Reference is Plan 4. Coordinates are in feet reference structure. True Vertical Depths are reference structure. --- Baker Hughes INTEQ --- | | | | | | | | | | | | | | | | | | | | | | | | | | | | | | | | | | | | | | | | | | | | | | | | | | | | | | | | | | | | | | | | | | | | | | | | | | | | | | | | | | | | | | | | | | | | | | | | | | | | | | | | | | | | | | | | | | | | | | | | | | | | | | | | | | | | | | | | | | | | | | | | | | | | | | | | | | | | | | | | | | | | | | | | | | | | | | | | | | | | | | | | | | | | | | | | | | | | | | | | | | | | | | | | | | | | | | | | | | | | | | | | | | | | | | | | | | | | | | | | | | | | | | | | | | | | | | | | | | | | | | | | | | | | | | | | | | | | | | | | | | | | | | | | | | | | | | | | | | | | | | | | | | | | | | | | | | | | | | | | | | | | | | | | | | | | | | | | | | | | | | | | | | | | | | | | | | | | | | | | | | | | | | | | | | | | | | | | | | | | | | | | | | | | | | | | | | | | | | | | | | | | | | | | | | | | | | | | | | | | | | | | | | | | | | | | | | | | | | | | | | | | | | | | | | | | | | | | | | | | | | | | | | | | | | | | | | | | | | | | | | | | | | | | | | | | | | | | | | | | | | | | | | | | | | | |
|-------------------|-----------|-----------|-------------|------------|-----------------|-------------|-------------|--------------|----------------|----------------|----------------|----------------|--|----------------|----------------|----------------|----------------|----------------|----------------|----------------|----------------|----------------|----------------|----------------|----------------|--|----------------|----------------|----------------|----------------|----------------|----------------|----------------|----------------|----------------|----------------|----------------|----------------|----------------|----------------|----------------|----------------|----------------|----------------|----------------|----------------|----------------|----------------|----------------|----------------|----------------|----------------|----------------|----------------|----------------|----------------|----------------|----------------|----------------|----------------|----------------|----------------|----------------|----------------|----------------|----------------|----------------|----------------|----------------|----------------|----------------|----------------|----------------|----------------|----------------|----------------|----------------|----------------|----------------|----------------|----------------|----------------|----------------|----------------|----------------|----------------|----------------|----------------|----------------|----------------|----------------|----------------|----------------|----------------|----------------|----------------|----------------|----------------|----------------|----------------|----------------|----------------|----------------|----------------|----------------|----------------|----------------|----------------|----------------|----------------|----------------|----------------|----------------|----------------|----------------|----------------|----------------|----------------|----------------|----------------|----------------|----------------|----------------|----------------|----------------|----------------|----------------|----------------|----------------|----------------|----------------|----------------|----------------|----------------|----------------|----------------|----------------|----------------|----------------|----------------|----------------|----------------|----------------|----------------|----------------|----------------|----------------|----------------|----------------|----------------|----------------|----------------|----------------|----------------|----------------|----------------|----------------|----------------|----------------|----------------|----------------|----------------|----------------|----------------|----------------|----------------|----------------|----------------|----------------|----------------|----------------|----------------|----------------|----------------|----------------|----------------|----------------|----------------|----------------|----------------|----------------|----------------|----------------|----------------|----------------|----------------|----------------|----------------|----------------|----------------|----------------|----------------|----------------|----------------|----------------|----------------|----------------|----------------|----------------|----------------|----------------|----------------|----------------|----------------|----------------|----------------|----------------|----------------|----------------|----------------|----------------|----------------|----------------|----------------|----------------|----------------|----------------|----------------|----------------|----------------|----------------|----------------|----------------|----------------|----------------|----------------|----------------|----------------|----------------|----------------|----------------|----------------|----------------|----------------|----------------|----------------|----------------|----------------|----------------|----------------|----------------|----------------|----------------|----------------|----------------|----------------|----------------|----------------|----------------|----------------|----------------|----------------|----------------|----------------|----------------|----------------|----------------|----------------|----------------|----------------|----------------|----------------|----------------|----------------|----------------|----------------|----------------|----------------|----------------|----------------|----------------|----------------|----------------|----------------|----------------|----------------|----------------|----------------|----------------|----------------|----------------|----------------|----------------|----------------|----------------|----------------|----------------|----------------|----------------|----------------|----------------|----------------|----------------|----------------|----------------|----------------|----------------|----------------|----------------|----------------|----------------|----------------|----------------|----------------|----------------|----------------|----------------|----------------|----------------|----------------|----------------|----------------|----------------|----------------|----------------|----------------|----------------|----------------|----------------|----------------|----------------|----------------|----------------|----------------|----------------|----------------|----------------|----------------|----------------|----------------|----------------|----------------|----------------|----------------|----------------|----------------|----------------|----------------|----------------|----------------|----------------|----------------|----------------|----------------|----------------|----------------|----------------|----------------|----------------|----------------|----------------|----------------|----------------|----------------|----------------|----------------|----------------|----------------|----------------|----------------|----------------|----------------|----------------|----------------|----------------|----------------|----------------|----------------|----------------|----------------|----------------|----------------|----------------|----------------|----------------|----------------|----------------|----------------|----------------|----------------|----------------|----------------|----------------|----------------|----------------|----------------|----------------|----------------|----------------|----------------|----------------|----------------|----------------|----------------|----------------|----------------|----------------|----------------|----------------|----------------|----------------|----------------|----------------|----------------|----------------|----------------|----------------|----------------|----------------|----------------|----------------|----------------|----------------|----------------|----------------|----------------|----------------|----------------|----------------|----------------|----------------|----------------|----------------|----------------|----------------|----------------|----------------|----------------|----------------|----------------|----------------|----------------|----------------|----------------|----------------|----------------|----------------|----------------|----------------|----------------|----------------|----------------|----------------|----------------|----------------|----------------|----------------|----------------|----------------|----------------|----------------|----------------|----------------|----------------|----------------|----------------|----------------|----------------|----------------|----------------|----------------|----------------|----------------|----------------|----------------|----------------|----------------|----------------|----------------|----------------|----------------|----------------|----------------|----------------|----------------|----------------|----------------|----------------|----------------|----------------|----------------|----------------|----------------|----------------|----------------|----------------|----------------|----------------|----------------|----------------|----------------|----------------|----------------|----------------|----------------|----------------|----------------|----------------|----------------|----------------|----------------|----------------|----------------|----------------|----------------|----------------|----------------|----------------|----------------|----------------|----------------|----------------|----------------|----------------|----------------|----------------|----------------|----------------|----------------|----------------|----------------|----------------|----------------|----------------|----------------|----------------|----------------|----------------|----------------|----------------|----------------|----------------|----------------|----------------|----------------|----------------|----------------|
| | | | | | | | | | | | | | Structure : Apache 24 Fed #9 Field : Quachada Ridge (Delaware) Location : EDDY COUNTY, NM. | | | | | | | | | | | | | Slot : slot #1 | | | | | | | | | | | | | | | | | | | | | | | | | | | | | | | | | | | | | | | | | | | | | | | | | | | | | | | | | | | | | | | | | | | | | | | | | | | | | | | | | | | | | | | | | | | | | | | | | | | | | | | | | | | | | | | | | | | | | | | | | | | | | | | | | | | | | | | | | | | | | | | | | | | | | | | | | | | | | | | | | | | | | | | | | | | | | | | | | | | | | | | | | | | | | | | | | | | | | | | | | | | | | | | | | | | | | | | | | | | | | | | | | | | | | | | | | | | | | | | | | | | | | | | | | | | | | | | | | | | | | | | | | | | | | | | | | | | | | | | | | | | | | | | | | | | | | | | | | | | | | | | | | | | | | | | | | | | | | | | | | | | | | | | | | | | | | | | | | | | | | | | | | | | | | | | | | | | | | | | | | | | | | | | | | | | | | | | | | | | | | | | | | | | | | | | | | | | | | | | | | | | | | | | | | | | | | | | | | | | | | | | | | | | | | | | | | | | | | | | | | | | | | | | | | | | | | | | | | | | | | | | | | | | | | | | | | | | | | | | | | | | | | | | | | | | | | | | | | | | | | | | | | | | | | | | |
| Well No. | Well Name | Well Type | Well Status | Well Depth | Well Completion | Well Casing | Well Cement | Well Annulus | Well Isolation | Well Isolation | Well Isolation | Well Isolation | Well Isolation | Well Isolation | Well Isolation | Well Isolation | Well Isolation | Well Isolation | Well Isolation | Well Isolation | Well Isolation | Well Isolation | Well Isolation | Well Isolation | Well Isolation | Well Isolation | Well Isolation | Well Isolation | Well Isolation | Well Isolation | Well Isolation | Well Isolation | Well Isolation | Well Isolation | Well Isolation | Well Isolation | Well Isolation | Well Isolation | Well Isolation | Well Isolation | Well Isolation | Well Isolation | Well Isolation | Well Isolation | Well Isolation | Well Isolation | Well Isolation | Well Isolation | Well Isolation | Well Isolation | Well Isolation | Well Isolation | Well Isolation | Well Isolation | Well Isolation | Well Isolation | Well Isolation | Well Isolation | Well Isolation | Well Isolation | Well Isolation | Well Isolation | Well Isolation | Well Isolation | Well Isolation | Well Isolation | Well Isolation | Well Isolation | Well Isolation | Well Isolation | Well Isolation | Well Isolation | Well Isolation | Well Isolation | Well Isolation | Well Isolation | Well Isolation | Well Isolation | Well Isolation | Well Isolation | Well Isolation | Well Isolation | Well Isolation | Well Isolation | Well Isolation | Well Isolation | Well Isolation | Well Isolation | Well Isolation | Well Isolation | Well Isolation | Well Isolation | Well Isolation | Well Isolation | Well Isolation | Well Isolation | Well Isolation | Well Isolation | Well Isolation | Well Isolation | Well Isolation | Well Isolation | Well Isolation | Well Isolation | Well Isolation | Well Isolation | Well Isolation | Well Isolation | Well Isolation | Well Isolation | Well Isolation | Well Isolation | Well Isolation | Well Isolation | Well Isolation | Well Isolation | Well Isolation | Well Isolation | Well Isolation | Well Isolation | Well Isolation | Well Isolation | Well Isolation | Well Isolation | Well Isolation | Well Isolation | Well Isolation | Well Isolation | Well Isolation | Well Isolation | Well Isolation | Well Isolation | Well Isolation | Well Isolation | Well Isolation | Well Isolation | Well Isolation | Well Isolation | Well Isolation | Well Isolation | Well Isolation | Well Isolation | Well Isolation | Well Isolation | Well Isolation | Well Isolation | Well Isolation | Well Isolation | Well Isolation | Well Isolation | Well Isolation | Well Isolation | Well Isolation | Well Isolation | Well Isolation | Well Isolation | Well Isolation | Well Isolation | Well Isolation | Well Isolation | Well Isolation | Well Isolation | Well Isolation | Well Isolation | Well Isolation | Well Isolation | Well Isolation | Well Isolation | Well Isolation | Well Isolation | Well Isolation | Well Isolation | Well Isolation | Well Isolation | Well Isolation | Well Isolation | Well Isolation | Well Isolation | Well Isolation | Well Isolation | Well Isolation | Well Isolation | Well Isolation | Well Isolation | Well Isolation | Well Isolation | Well Isolation | Well Isolation | Well Isolation | Well Isolation | Well Isolation | Well Isolation | Well Isolation | Well Isolation | Well Isolation | Well Isolation | Well Isolation | Well Isolation | Well Isolation | Well Isolation | Well Isolation | Well Isolation | Well Isolation | Well Isolation | Well Isolation | Well Isolation | Well Isolation | Well Isolation | Well Isolation | Well Isolation | Well Isolation | Well Isolation | Well Isolation | Well Isolation | Well Isolation | Well Isolation | Well Isolation | Well Isolation | Well Isolation | Well Isolation | Well Isolation | Well Isolation | Well Isolation | Well Isolation | Well Isolation | Well Isolation | Well Isolation | Well Isolation | Well Isolation | Well Isolation | Well Isolation | Well Isolation | Well Isolation | Well Isolation | Well Isolation | Well Isolation | Well Isolation | Well Isolation | Well Isolation | Well Isolation | Well Isolation | Well Isolation | Well Isolation | Well Isolation | Well Isolation | Well Isolation | Well Isolation | Well Isolation | Well Isolation | Well Isolation | Well Isolation | Well Isolation | Well Isolation | Well Isolation | Well Isolation | Well Isolation | Well Isolation | Well Isolation | Well Isolation | Well Isolation | Well Isolation | Well Isolation | Well Isolation | Well Isolation | Well Isolation | Well Isolation | Well Isolation | Well Isolation | Well Isolation | Well Isolation | Well Isolation | Well Isolation | Well Isolation | Well Isolation | Well Isolation | Well Isolation | Well Isolation | Well Isolation | Well Isolation | Well Isolation | Well Isolation | Well Isolation | Well Isolation | Well Isolation | Well Isolation | Well Isolation | Well Isolation | Well Isolation | Well Isolation | Well Isolation | Well Isolation | Well Isolation | Well Isolation | Well Isolation | Well Isolation | Well Isolation | Well Isolation | Well Isolation | Well Isolation | Well Isolation | Well Isolation | Well Isolation | Well Isolation | Well Isolation | Well Isolation | Well Isolation | Well Isolation | Well Isolation | Well Isolation | Well Isolation | Well Isolation | Well Isolation | Well Isolation | Well Isolation | Well Isolation | Well Isolation | Well Isolation | Well Isolation | Well Isolation | Well Isolation | Well Isolation | Well Isolation | Well Isolation | Well Isolation | Well Isolation | Well Isolation | Well Isolation | Well Isolation | Well Isolation | Well Isolation | Well Isolation | Well Isolation | Well Isolation | Well Isolation | Well Isolation | Well Isolation | Well Isolation | Well Isolation | Well Isolation | Well Isolation | Well Isolation | Well Isolation | Well Isolation | Well Isolation | Well Isolation | Well Isolation | Well Isolation | Well Isolation | Well Isolation | Well Isolation | Well Isolation | Well Isolation | Well Isolation | Well Isolation | Well Isolation | Well Isolation | Well Isolation | Well Isolation | Well Isolation | Well Isolation | Well Isolation | Well Isolation | Well Isolation | Well Isolation | Well Isolation | Well Isolation | Well Isolation | Well Isolation | Well Isolation | Well Isolation | Well Isolation | Well Isolation | Well Isolation | Well Isolation | Well Isolation | Well Isolation | Well Isolation | Well Isolation | Well Isolation | Well Isolation | Well Isolation | Well Isolation | Well Isolation | Well Isolation | Well Isolation | Well Isolation | Well Isolation | Well Isolation | Well Isolation | Well Isolation | Well Isolation | Well Isolation | Well Isolation | Well Isolation | Well Isolation | Well Isolation | Well Isolation | Well Isolation | Well Isolation | Well Isolation | Well Isolation | Well Isolation | Well Isolation | Well Isolation | Well Isolation | Well Isolation | Well Isolation | Well Isolation | Well Isolation | Well Isolation | Well Isolation | Well Isolation | Well Isolation | Well Isolation | Well Isolation | Well Isolation | Well Isolation | Well Isolation | Well Isolation | Well Isolation | Well Isolation | Well Isolation | Well Isolation | Well Isolation | Well Isolation | Well Isolation | Well Isolation | Well Isolation | Well Isolation | Well Isolation | Well Isolation | Well Isolation | Well Isolation | Well Isolation | Well Isolation | Well Isolation | Well Isolation | Well Isolation | Well Isolation | Well Isolation | Well Isolation | Well Isolation | Well Isolation | Well Isolation | Well Isolation | Well Isolation | Well Isolation | Well Isolation | Well Isolation | Well Isolation | Well Isolation | Well Isolation | Well Isolation | Well Isolation | Well Isolation | Well Isolation | Well Isolation | Well Isolation | Well Isolation | Well Isolation | Well Isolation | Well Isolation | Well Isolation | Well Isolation | Well Isolation | Well Isolation | Well Isolation | Well Isolation | Well Isolation | Well Isolation | Well Isolation | Well Isolation | Well Isolation | Well Isolation | Well Isolation | Well Isolation | Well Isolation | Well Isolation | Well Isolation | Well Isolation | Well Isolation | Well Isolation | Well Isolation | Well Isolation | Well Isolation | Well Isolation | Well Isolation | Well Isolation | Well Isolation | Well Isolation | Well Isolation | Well Isolation | Well Isolation | Well Isolation | Well Isolation | Well Isolation | Well Isolation | Well Isolation | Well Isolation | Well Isolation | Well Isolation | Well Isolation | Well Isolation | Well Isolation | Well Isolation | Well Isolation | Well Isolation | Well Isolation | Well Isolation | Well Isolation | Well Isolation | Well Isolation | Well Isolation | Well Isolation | Well Isolation | Well Isolation | Well Isolation | Well Isolation | Well Isolation | Well Isolation | Well Isolation | Well Isolation | Well Isolation | Well Isolation | Well Isolation | Well Isolation | Well Isolation | Well Isolation | Well Isolation | Well Isolation | Well Isolation | Well Isolation | Well Isolation | Well Isolation | Well Isolation | Well Isolation | Well Isolation |



11681
8017
3667



RECEIVED

Devon Energy Corporation
20 North Broadway
Oklahoma City, Oklahoma 73102-8260
Fax 405-552-8113

September 8, 2004

SEP 10 2004

New Mexico Oil Conservation Division
1220 South St. Francis Drive
Santa Fe, NM 87505
Attn: Michael Stogner

Oil Conservation Division
1220 S. St. Francis Drive
Santa Fe, NM 87505

RE: Apache 24 Federal #9
Section 24-T22S-R30E
Eddy County, New Mexico

Gentlemen:

Devon Energy Production Company, L.P. ("Devon"), as Operator, intends to drill the referenced horizontal Delaware well to a total vertical depth of 7,615' with a total measured depth of 11,681'. As reflected on the attached C-102, the well has been permitted at a surface location of 330' FEL and 1,386' FSL with a permitted bottom hole location of 2,310' FSL and 330' FWL of Section 24. The initial portion of the open hole (and potentially productive) horizontal section of the well will be located 1,261.55' FEL and 1,572.31' FSL which is an unorthodox location.

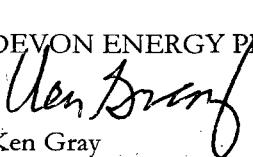
Inasmuch as the initial portion of the open hole horizontal section of the referenced well is located at an unorthodox location from that permitted by the Statewide Pool Rules, Devon respectfully requests that the Commission administratively approve this application for an unorthodox location in accordance with Division Rule 104(F)(3). This unorthodox location affects the leasehold owner in Unit letters J, O, & P. Devon is the owner of 100% Record Title of Federal Lease NM 89051 which covers Unit letters J, O & P, among other lands. Therefore, no additional notification of this application should be required as this unorthodox location will affect Devon leasehold only.

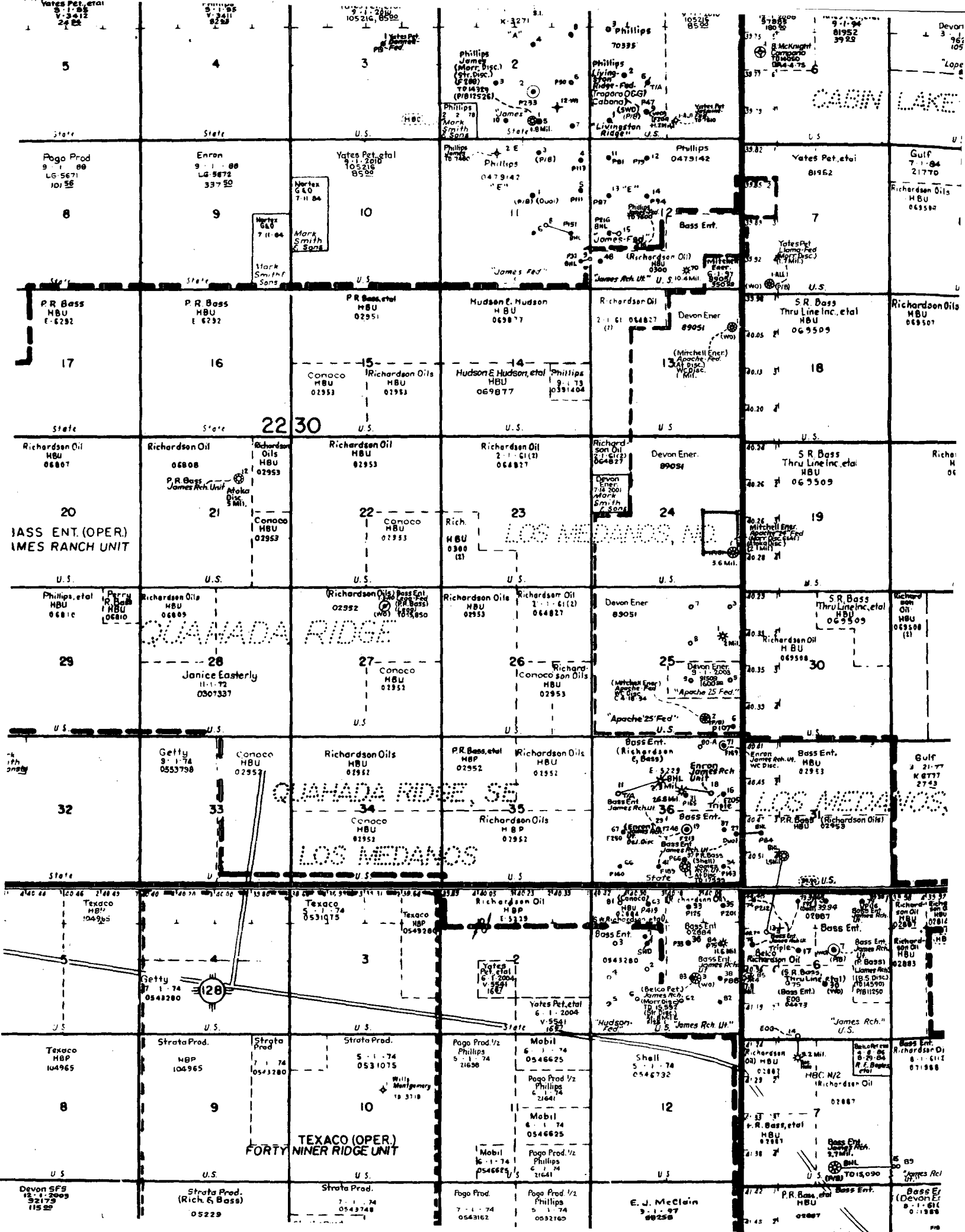
Attached for your review you will find a land plat reflecting Devon as the only affected party, a net sand isopach covering the Lower Brushy Canyon D sand, a State of New Mexico form C-102, and a Well Profile plat prepared by Baker Hughes.

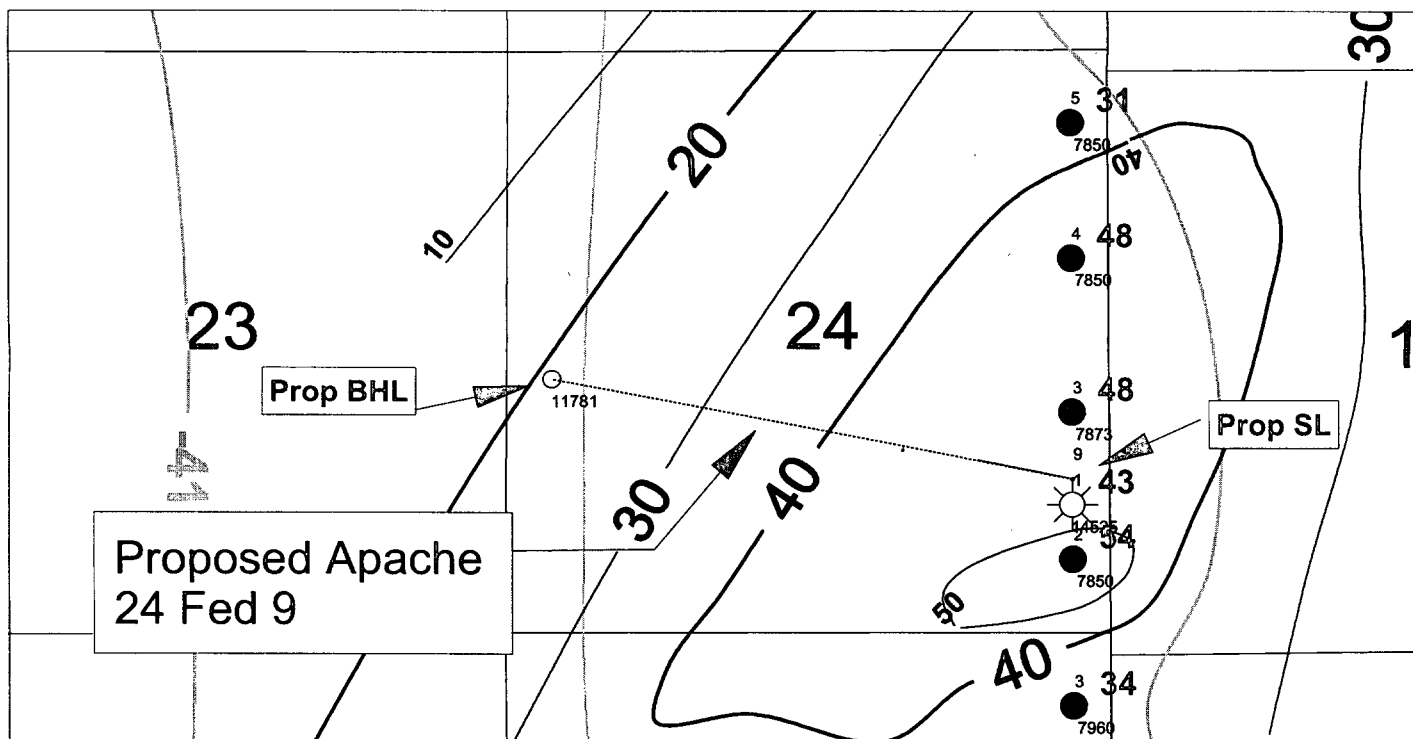
Feel free to contact the undersigned at (405) 552-4633 if there are any concerns or questions regarding this application.

Yours very truly,

DEVON ENERGY PRODUCTION COMPANY, L.P.


Ken Gray
Senior Land Advisor
KG\Apache 24-9 UL
Enclosure





| | | |
|---|---------|-------------------|
| <i>devon</i> | | |
| Todd Federal Area T23S R31E New Mexico Top Lower Brushy Canyon D sand structure and Net sd isopach | | |
| Author: | | Date: |
| DE O'Bright | | 7 September, 2004 |
| | Scale: | |
| | <scale> | |

DISTRICT I
1625 N. French Dr., Hobbs, NM 88240
DISTRICT II
811 South First, Artesia, NM 88210

DISTRICT III
1000 Rio Brazos Rd., Aztec, NM 87410

DISTRICT IV
2040 South Pacheco, Santa Fe, NM 87505

State of New Mexico
Energy, Minerals and Natural Resources Department

Form C-102
Revised March 17, 1999

Submit to Appropriate District Office
State Lease - 4 Copies
Fee Lease - 3 Copies

OIL CONSERVATION DIVISION

2040 South Pacheco
Santa Fe, New Mexico 87504-2088

☐ AMENDED REPORT

WELL LOCATION AND ACREAGE DEDICATION PLAT

| | | |
|---------------|--|--------------------|
| API Number | Pool Code | Pool Name |
| Property Code | Property Name APACHE "24" FEDERAL | Well Number 9 |
| OGRID No. | Operator Name DEVON ENERGY PRODUCTION CO., L.P. | Elevation 3404' |

Surface Location

| | | | | | | | | | |
|---------------|---------|----------|-------|---------|---------------|------------------|---------------|----------------|--------|
| UL or lot No. | Section | Township | Range | Lot Idn | Feet from the | North/South line | Feet from the | East/West line | County |
| I | 24 | 22 S | 30 E | | 1386 | SOUTH | 330 | EAST | EDDY |

Bottom Hole Location If Different From Surface

| | | | | | | | | | |
|-----------------|-----------------|--------------------|-----------|---------|---------------|------------------|---------------|----------------|--------|
| UL or lot No. | Section | Township | Range | Lot Idn | Feet from the | North/South line | Feet from the | East/West line | County |
| L | 24 | 22 S | 30 E | | 2310 | SOUTH | 330 | WEST | EDDY |
| Dedicated Acres | Joint or Infill | Consolidation Code | Order No. | | | | | | |

NO ALLOWABLE WILL BE ASSIGNED TO THIS COMPLETION UNTIL ALL INTERESTS HAVE BEEN CONSOLIDATED
OR A NON-STANDARD UNIT HAS BEEN APPROVED BY THE DIVISION

| | |
|--|---|
| | OPERATOR CERTIFICATION <i>I hereby certify the the information contained herein is true and complete to the best of my knowledge and belief.</i> Signature _____ Printed Name _____ Title _____ Date _____ |
| | SURVEYOR CERTIFICATION <i>I hereby certify that the well location shown on this plat was plotted from field notes of actual surveys made by me or under my supervision, and that the same is true and correct to the best of my belief.</i> MAY 6, 2004 Date Surveyed Signature & Seal of GARY L. JONES Professional Surveyor N.M.O. No. 4253 Certificate No. Gary L. Jones 7977 BASIN SURVEYS |
| | |
| | |

DEVON ENERGY

| | |
|----------------------------------|-----------------------------|
| Structure : Apache 24 Fed #9 | Slot : slot #1 |
| Field : Quahada Ridge (Delaware) | Location : EDDY COUNTY, NM. |

Location : EDDY COUNTY, NM.

Created by adrynm
Date plotted : 3-Sep-2004
Plot Reference is Plan 4.
Coordinates are in feet reference structure.
True Vertical Depths are reference structure.

--- Baker Hughes INTEQ ---

| Year | 1980 | 1981 | 1982 | 1983 | 1984 | 1985 | 1986 | 1987 | 1988 | 1989 | 1990 | 1991 | 1992 | 1993 | 1994 | 1995 | 1996 | 1997 | 1998 | 1999 | 2000 | 2001 | 2002 | 2003 | 2004 | 2005 | 2006 | 2007 | 2008 | 2009 | 2010 | 2011 | 2012 | 2013 | 2014 | 2015 | 2016 | 2017 | 2018 | 2019 | 2020 | 2021 | 2022 | 2023 | 2024 | 2025 | 2026 | 2027 | 2028 | 2029 | 2030 | 2031 | 2032 | 2033 | 2034 | 2035 | 2036 | 2037 | 2038 | 2039 | 2040 | 2041 | 2042 | 2043 | 2044 | 2045 | 2046 | 2047 | 2048 | 2049 | 2050 | 2051 | 2052 | 2053 | 2054 | 2055 | 2056 | 2057 | 2058 | 2059 | 2060 | 2061 | 2062 | 2063 | 2064 | 2065 | 2066 | 2067 | 2068 | 2069 | 2070 | 2071 | 2072 | 2073 | 2074 | 2075 | 2076 | 2077 | 2078 | 2079 | 2080 | 2081 | 2082 | 2083 | 2084 | 2085 | 2086 | 2087 | 2088 | 2089 | 2090 | 2091 | 2092 | 2093 | 2094 | 2095 | 2096 | 2097 | 2098 | 2099 | 2100 |
|------|------|------|------|------|------|------|------|------|------|------|------|------|------|------|------|------|------|------|------|------|------|------|------|------|------|------|------|------|------|------|------|------|------|------|------|------|------|------|------|------|------|------|------|------|------|------|------|------|------|------|------|------|------|------|------|------|------|------|------|------|------|------|------|------|------|------|------|------|------|------|------|------|------|------|------|------|------|------|------|------|------|------|------|------|------|------|------|------|------|------|------|------|------|------|------|------|------|------|------|------|------|------|------|------|------|------|------|------|------|------|------|------|------|------|------|------|------|------|------|------|------|
| 1980 | 1980 | 1981 | 1982 | 1983 | 1984 | 1985 | 1986 | 1987 | 1988 | 1989 | 1990 | 1991 | 1992 | 1993 | 1994 | 1995 | 1996 | 1997 | 1998 | 1999 | 2000 | 2001 | 2002 | 2003 | 2004 | 2005 | 2006 | 2007 | 2008 | 2009 | 2010 | 2011 | 2012 | 2013 | 2014 | 2015 | 2016 | 2017 | 2018 | 2019 | 2020 | 2021 | 2022 | 2023 | 2024 | 2025 | 2026 | 2027 | 2028 | 2029 | 2030 | 2031 | 2032 | 2033 | 2034 | 2035 | 2036 | 2037 | 2038 | 2039 | 2040 | 2041 | 2042 | 2043 | 2044 | 2045 | 2046 | 2047 | 2048 | 2049 | 2050 | 2051 | 2052 | 2053 | 2054 | 2055 | 2056 | 2057 | 2058 | 2059 | 2060 | 2061 | 2062 | 2063 | 2064 | 2065 | 2066 | 2067 | 2068 | 2069 | 2070 | 2071 | 2072 | 2073 | 2074 | 2075 | 2076 | 2077 | 2078 | 2079 | 2080 | 2081 | 2082 | 2083 | 2084 | 2085 | 2086 | 2087 | 2088 | 2089 | 2090 | 2091 | 2092 | 2093 | 2094 | 2095 | 2096 | 2097 | 2098 | 2099 | 2100 |

< - West (feet)

5600

| | | | | | | | | | | | | | | |
|------|------|------|------|------|------|------|------|------|-----|-----|---|-----|-----|------|
| 4400 | 4000 | 3600 | 3200 | 2800 | 2400 | 2000 | 1600 | 1200 | 800 | 400 | 0 | 400 | 800 | 1200 |
|------|------|------|------|------|------|------|------|------|-----|-----|---|-----|-----|------|

