

NSL 10/25/99

#11+12



ENERGY CORPORATION

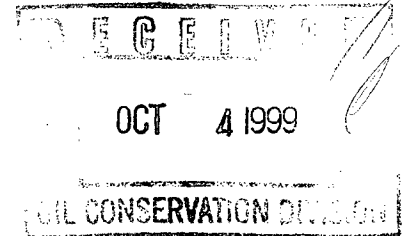
20 North Broadway, Suite 1500
Oklahoma City, Oklahoma 73102-8260

Telephone 405/235-3611
FAX 405/552-4550

September 29, 1999

CERTIFIED MAIL # Z-781-289 810

Michael E. Stogner
State of New Mexico
Energy, Minerals and Natural Resources Department
Oil Conservation Division
2040 South Pacheco
Santa Fe, New Mexico 87505



Mr. Stogner:

Pursuant to Division Rule 104.F., Devon Energy Corporation (Nevada) ("Devon") applies for administrative approval of unorthodox oil well locations for the following wells:

35-B
Logan 35 Federal #11
1310' FSL & 400' FEL
SE/4 SE/4, Section 35-T17S-R27E
Eddy County, New Mexico

35-D
Logan 35 Federal #12
580' FSL & 1030' FEL
SE/4 SE/4, Section 35-T17S-R27E
Eddy County, New Mexico

The wells will be drilled to test the Glorieta-Yeso formation (Red Lake; Q-GB-SA & Glorieta-Yeso, NE Pools). The pools are subject to statewide rules, with 40 acre well units, and wells to be located no closer than 330 feet to a quarter-quarter section line. Form C-102 is attached for each well as Exhibit A.

The original location proposed by Devon for the Logan 35 Federal #11 was at an orthodox location at 330' FEL & 990' FSL. The current location is non-standard due to topographic reasons.

The original location proposed by Devon for the Logan 35 Federal #12 was at an orthodox location at 580' FSL & 990' FEL. The current location is non-standard due to topographic reasons.

Attached Exhibit B (topographic map) and Exhibit C (aerial photo) show the proximity of the location of the Logan 35 Federal #11 to a highway and pipeline and the Logan 35 Federal #12 to a pipeline and electric line. Due to these features, the Bureau of Land Management requires Devon to move the wells to the proposed locations.

Attached, as Exhibit D is a land plat of the area. The wells are only moving toward Devon-operated acreage, and thus no other operator has been notified of this application. The lease on which the proposed wells are located is a federal lease and there is no effect on the royalty owners.

Logan 35 Federal #11
Logan 35 Federal #12
NSL Approval
September 29, 1999
Page Two

State of New Mexico
Energy, Minerals and Natural Resources Dept.
Oil Conservation Division

Directional drilling to an orthodox location is not feasible because it would add 40% to the cost of the wells, and increase operational costs by 30%. Because these wells are not prolific producers (averaging 40 BOPD), the added costs would make the wells uneconomic.

The subject pool is continuous across this area, trending in a northeast-southwest direction. Thus, geology is not a factor in these well locations. Although no decision has yet been made, Devon is considering the possibility of a future waterflood for these pools and the proposed wells fit into a waterflood pattern.

Based on the foregoing, we request approval of the above locations. Please call me at (405) 552-4515 if you need anything further on this matter.

Very truly yours,

DEVON ENERGY CORPORATION (NEVADA)



Tonja Rutelonis
Engineering Technician

\trr

Attachments: Exhibit A (2)
Exhibit B (2)
Exhibit C
Exhibit D

Exhibit A

DISTRICT I
P.O. Box 1980, Hobbs, NM 88240

State of New Mexico
Energy, Minerals and Natural Resources Department

Form C-102
Revised February 10, 1994
Instruction on back
Submit to Appropriate District Office
State Lease - 4 Copies
Fee Lease - 3 Copies

DISTRICT II
P.O. Drawer DD, Artesia, NM 88210

OIL CONSERVATION DIVISION

DISTRICT III
1000 Rio Brazos Rd., Aztec, NM 87410

P.O. Box 2088
Santa Fe, New Mexico 87504-2088

☐ AMENDED REPORT

WELL LOCATION AND ACREAGE DEDICATION PLAT

| | | |
|------------------------|---|--|
| API Number | Pool Code 96836 | Pool Name Red Lake; Glorieta-Yeso, NE $\frac{1}{4}$ Q-GB-SA |
| Property Code 23714 | Property Name LOGAN "35" FEDERAL | Well Number 11 |
| OGRID No. 6137 | Operator Name DEVON ENERGY CORPORATION | Elevation 3642' |

Surface Location

| UL or lot No. | Section | Township | Range | Lot Idn | Feet from the | North/South line | Feet from the | East/West line | County |
|---------------|---------|----------|-------|---------|---------------|------------------|---------------|----------------|--------|
| P | 35 | 17 S | 27 E | | 1310 | SOUTH | 400 | EAST | EDDY |

Bottom Hole Location If Different From Surface

| UL or lot No. | Section | Township | Range | Lot Idn | Feet from the | North/South line | Feet from the | East/West line | County |
|---------------|---------|----------|-------|---------|---------------|------------------|---------------|----------------|--------|
| | | | | | | | | | |

| | | | |
|-----------------|-----------------|--------------------|-----------|
| Dedicated Acres | Joint or Infill | Consolidation Code | Order No. |
| | | | |

NO ALLOWABLE WILL BE ASSIGNED TO THIS COMPLETION UNTIL ALL INTERESTS HAVE BEEN CONSOLIDATED
OR A NON-STANDARD UNIT HAS BEEN APPROVED BY THE DIVISION

| | | |
|--|---|--|
| | OPERATOR CERTIFICATION I hereby certify that the information contained herein is true and complete to the best of my knowledge and belief. <u>E. L. Buttross, Jr.</u> Signature <u>E. L. Buttross, Jr.</u> Printed Name <u>District Engineer</u> Title <u>July 28, 1999</u> Date | |
| | SURVEYOR CERTIFICATION I hereby certify that the well location shown on this plat was plotted from field notes of actual surveys made by me or under my supervision, and that the same is true and correct to the best of my belief. <u>May 5, 1999</u> Date Surveyed <u>[Signature]</u> Signature Professional Surveyor <u>7977</u> Certificate No. | |
| | BASIN SURVEYS | |
| | 3639.3' 3632.0' 400' 3655.3' 3644.5' 1310' | |

Exhibit A

DISTRICT I
P.O. Box 1980, Hobbs, NM 88240

State of New Mexico
Energy, Minerals and Natural Resources Department

Form C-102
Revised February 10, 1994
Instruction on back
Submit to Appropriate District Office
State Lease - 4 Copies
Fee Lease - 3 Copies

DISTRICT II
P.O. Drawer DD, Artesia, NM 88210

OIL CONSERVATION DIVISION

DISTRICT III
1000 Rio Brazos Rd., Artec, NM 87410

P.O. Box 2088
Santa Fe, New Mexico 87504-2088

☐ AMENDED REPORT

WELL LOCATION AND ACREAGE DEDICATION PLAT

| | | |
|------------------------|---|---|
| API Number | Pool Code 96836 | Pool Name Red Lake; Glorieta-Yeso, NE <i>Q-GB-SA</i> |
| Property Code 23714 | Property Name LOGAN "35" FEDERAL | Well Number 12 |
| OGRID No. 6137 | Operator Name DEVON ENERGY CORPORATION | Elevation 3629' |

Surface Location

| UL or lot No. | Section | Township | Range | Lot Idn | Feet from the | North/South line | Feet from the | East/West line | County |
|---------------|---------|----------|-------|---------|---------------|------------------|---------------|----------------|--------|
| P | 35 | 17 S | 27 E | | 580 | SOUTH | 1030 | EAST | EDDY |

Bottom Hole Location If Different From Surface

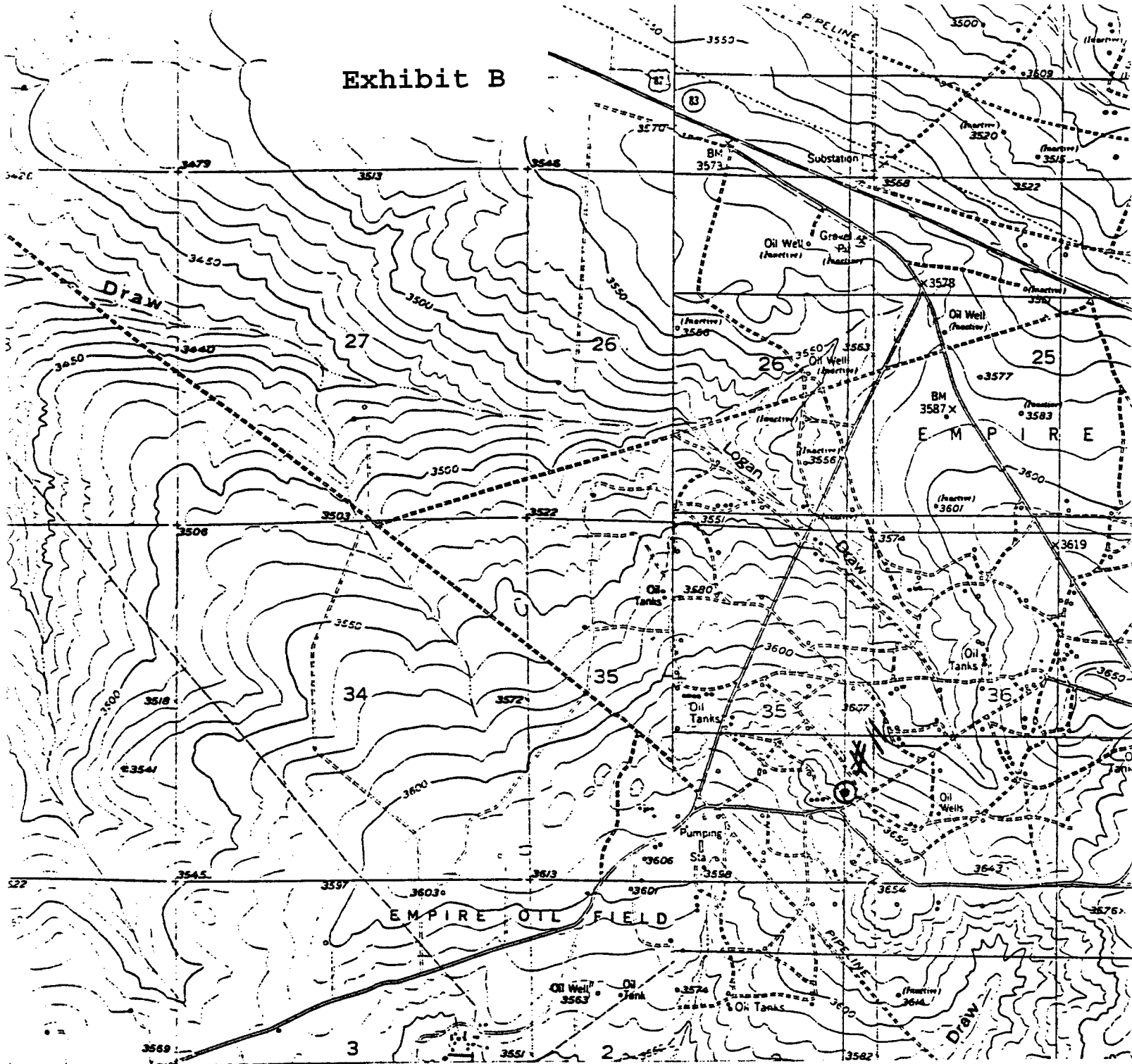
| UL or lot No. | Section | Township | Range | Lot Idn | Feet from the | North/South line | Feet from the | East/West line | County |
|---------------|---------|----------|-------|---------|---------------|------------------|---------------|----------------|--------|
| | | | | | | | | | |

| | | | |
|-----------------|-----------------|--------------------|-----------|
| Dedicated Acres | Joint or Infill | Consolidation Code | Order No. |
| | | | |

NO ALLOWABLE WILL BE ASSIGNED TO THIS COMPLETION UNTIL ALL INTERESTS HAVE BEEN CONSOLIDATED
OR A NON-STANDARD UNIT HAS BEEN APPROVED BY THE DIVISION

| | |
|--|--|
| | OPERATOR CERTIFICATION I hereby certify the the information contained herein is true and complete to the best of my knowledge and belief. <i>E. L. Buttross Jr.</i> Signature E. L. Buttross, Jr. Printed Name District Engineer Title July 28, 1999 Date |
| | SURVEYOR CERTIFICATION I hereby certify that the well location shown on this plat was plotted from field notes of actual surveys made by me or under my supervision and that the same is true and correct to the best of my belief. May 5, 1999 Date Surveyed L. JONES Signature Seal of Professional Surveyor W.O. No. 91440 Certificate No. Gary L. Jones 7977 BASIN SURVEYS |
| | |
| | |

Exhibit B



DEVON ENERGY CORP.
 LOGAN "35" FEDERAL #11
 1310' FSL & 400' FEL
 Sec. 35, T-17-S, R-27-E,
 Eddy County, New Mexico.

N

SCALE: 1"=2000'

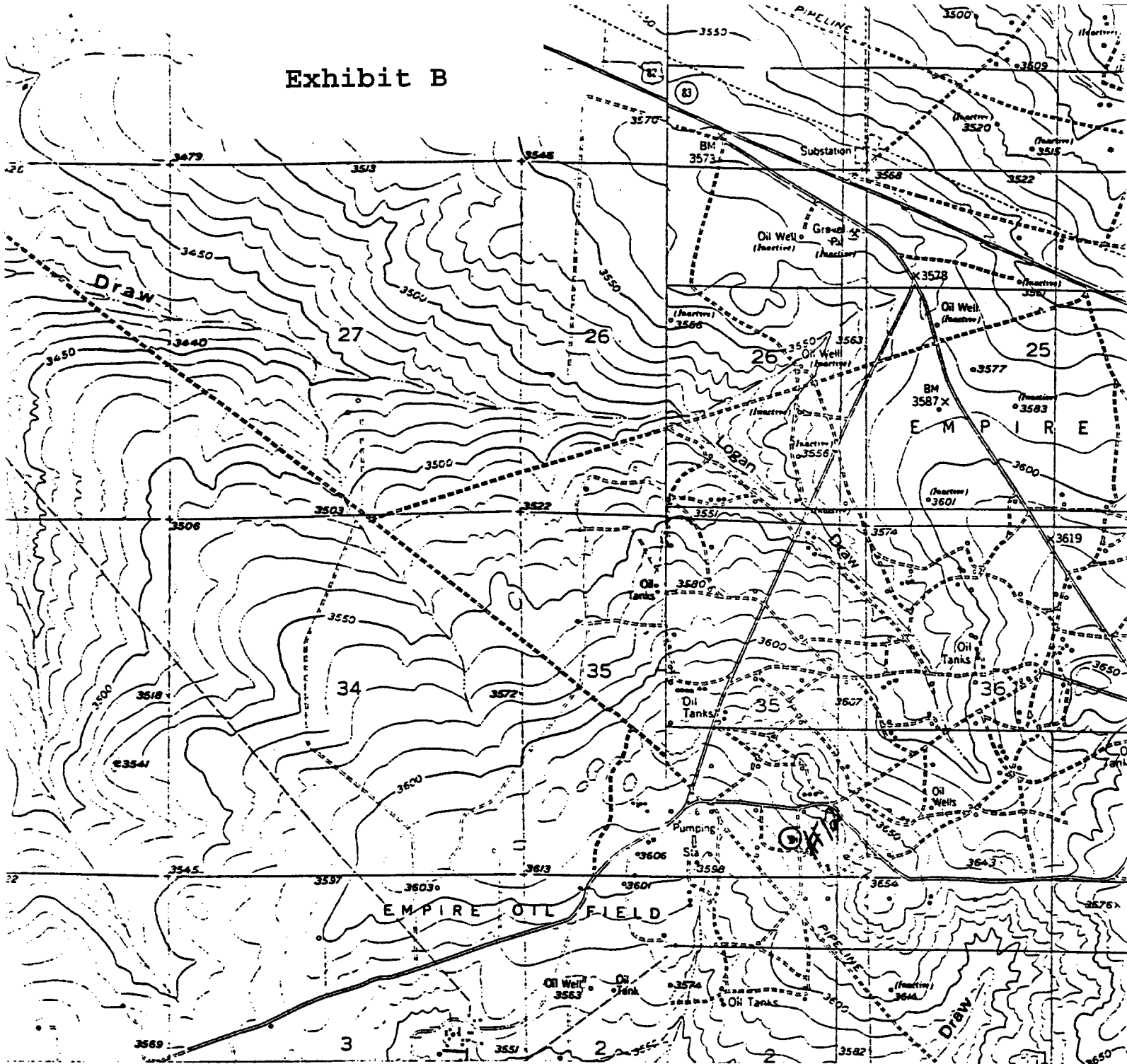
BASIN SURVEYS

P.O. BOX 1786-HOBBS, NEW MEXICO

2000' 0 2000' 4000 Feet

| | | | |
|-------------------|-------------------|-----------------------|---------------------|
| W.O. Number: 9144 | Drawn By: K. GOAD | Survey Date: 05-04-99 | Sheet 1 of 1 Sheets |
|-------------------|-------------------|-----------------------|---------------------|

Exhibit B



DEVON ENERGY CORP.
 LOGAN "35" FEDERAL #12
 580' FSL & 1030' FEL
 Sec. 35, T-17-S, R-27-E,
 Eddy County, New Mexico.

SCALE: 1"=2000'

BASIN SURVEYS

P.O. BOX 1786 - HOBBS, NEW MEXICO

2000' 0 2000' 4000 Feet

| | | | |
|-------------------|-------------------|-----------------------|---------------------|
| W.O. Number: 9144 | Drawn By: K. GOAD | Survey Date: 05-04-99 | Sheet 1 of 1 Sheets |
|-------------------|-------------------|-----------------------|---------------------|

Sec. 35-T17S-R27E

Logan 35 Federal #11

Logan 35 Federal #12



