



# CONTINENTAL OIL COMPANY

P. O. Box 460

HOBBS, NEW MEXICO 88240

PRODUCTION DEPARTMENT

HOBBS DIVISION

L. P. THOMPSON

*Division Manager*

G. C. JAMIESON

*Assistant Division Manager*

October 20, 1969

1001 NORTH TURNER

TELEPHONE 393-4141

New Mexico Oil Conservation Commission  
P. O. Box 2088  
Santa Fe, New Mexico

Attention of Mr. A. L. Porter, Jr.,  
Secretary-Director

Re: Application for Downhole Commingling -  
Britt 'B' Well No. 21 - J-10-20S-37E

Gentlemen:

Continental Oil Company, Box 460, Hobbs, New Mexico, as operator of the Britt 'B' Lease respectfully requests administrative approval under the provisions of Order No. R-3845 to commingle in the well bore production from the Monument Tubb and Weir Blinebry Pools in its Britt 'B' Well No. 21 located in Unit J of Section 10, T20S, R37E, Lea County, New Mexico. This dual completion was authorized by administrative order No. MC-1430. The attached plat shows the Britt 'B' Lease outlined in red and the No. 21 well by the red circle.

Attached hereto is a form C-116 showing the results of tests taken within 30 days on the two zones in this well. As shown by these tests the combined producing rate is 31 barrels oil, 0 barrels water per day.

On October 13, 1969, the bottom hole pressure in the Tubb zone which is capable of flowing was measured in Well No. 18 at 840 psi after shut in of 69 hours. We did not run a BHP bomb in No. 21 because the well has shown communication between the Tubb and Blinebry and would not be representative. The pressure in No. 18 is considered representative of this area of the reservoir. The estimated bottom hole pressure after 24 hour shut in of the Blinebry zone, which is artificially lifted, is 509 psi based on the surface shut in pressure and the measured fluid level in Well No. 18. The commingled production will be artificially lifted.

Attached hereto is a production decline curve for each zone and for both zones combined. The future production from each zone is estimated

Britt B No. 21  
Page 2

by the extension of the curve. Since the Blinebry has been artificially lifted since completion, we propose to allocate production to that zone from its curve extension and allocate Tubb production by the subtraction method.

The fluid from these two pools has been commingled at the tank battery for a number of years and there has been no indication of incompatibility. Both crudes are typical Permian high gravity crude. Since the crudes have been commingled at the tank battery before sale to the pipe line, there should be no difference between the value of the commingled stream at the surface and that commingled within the well bore.

The Britt "B" is a federal lease and a copy of this application is being furnished the USGS and to all offset operators. Your further handling and approval of this application will be sincerely appreciated.

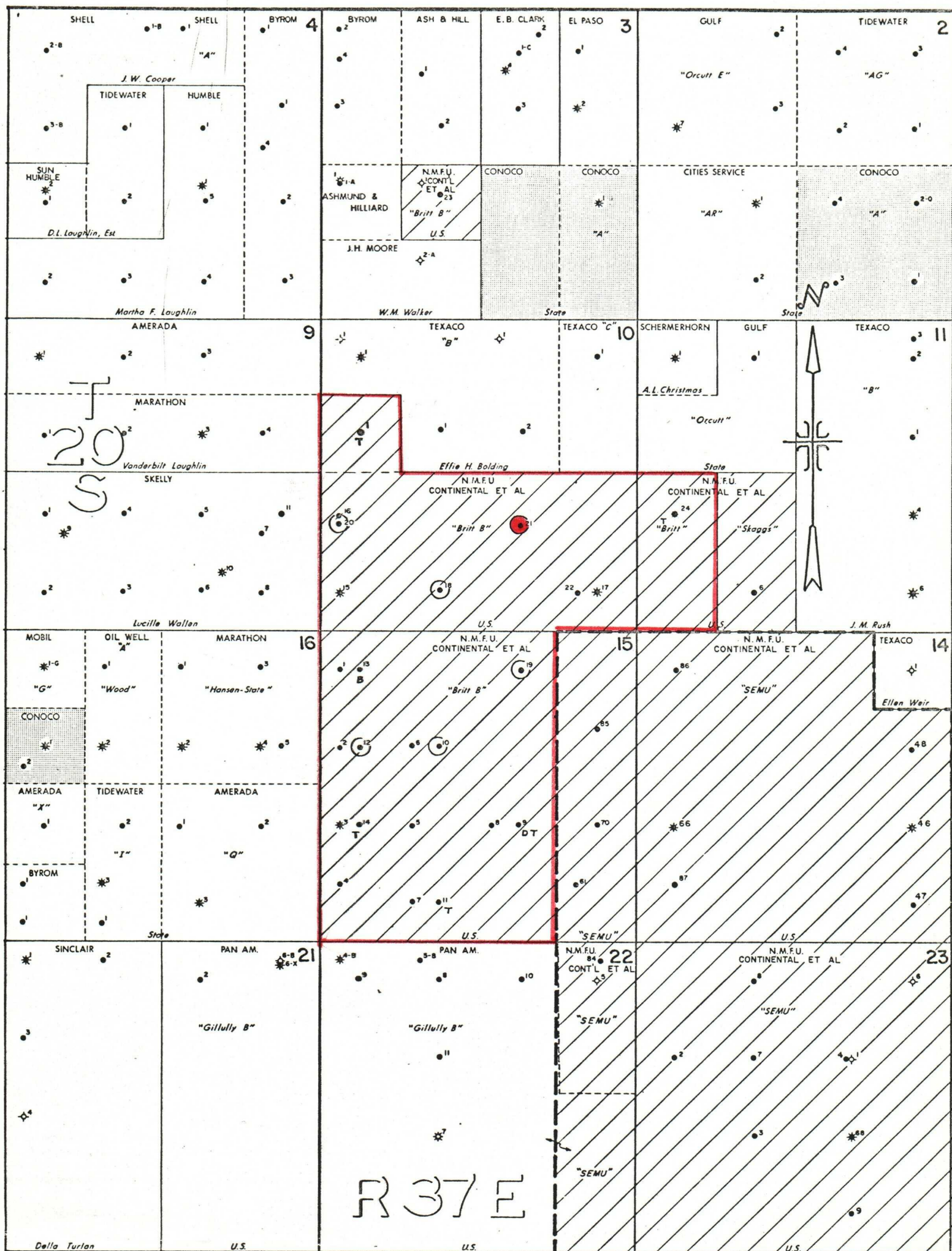
Yours very truly,



G. C. Jamieson

VTL-JS  
Copies to Texaco, Inc.  
Amerada Hess Corporation  
Marathon Oil Company  
Skelly Oil Company

RLA JJB JWK



- ⊙ BLINEBRY-TUBB DUAL COMPLETION
- BLINEBRY PRODUCER
- B TUBB PRODUCER
- DT DRINKARD-TUBB DUAL COMPLETION

CONTINENTAL OIL COMPANY  
 PRODUCTION DEPARTMENT  
 HOBBS DIVISION  
 MONUMENT TUBB &  
 WEIR BLINEBRY POOLS  
 LEA COUNTY, NEW MEXICO  
 SCALE: 1" = 2000'

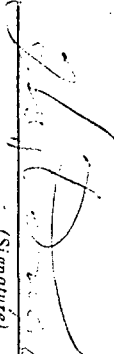
NEW MEXICO OIL CONSERVATION COMMISSION  
GAS-OIL RATIO TESTS

C-116  
Revised 1-1-65

| Operator                |          | Pool                                  |    | County |              |                    |            |             |                  |                      |            |            |                 |                             |          |            |
|-------------------------|----------|---------------------------------------|----|--------|--------------|--------------------|------------|-------------|------------------|----------------------|------------|------------|-----------------|-----------------------------|----------|------------|
| Continental Oil Company |          | Weir Blinebry                         |    | Lea    |              |                    |            |             |                  |                      |            |            |                 |                             |          |            |
| Address                 |          | P.O. Box 460, Hobbs, New Mexico 88240 |    | 88240  |              |                    |            |             |                  |                      |            |            |                 |                             |          |            |
| LEASE NAME              | WELL NO. | LOCATION                              |    |        | DATE OF TEST | TYPE OF TEST - (X) | CHOKE SIZE | TBG. PRESS. | DAILY ALLOW-ABLE | LENGTH OF TEST HOURS | Completion |            |                 | GAS - OIL RATIO CU.FT./BBL. |          |            |
|                         |          | U                                     | S  | T      |              |                    |            |             |                  |                      | R          | WATER BBL. | PROD. GRAV. OIL |                             | OIL BBL. | GAS M.C.F. |
| Britt B                 | 18       | N                                     | 10 | 20     | 37           | 10-2-69            | P          | open        | 50               | 16                   | 24         | 1          | 56.3            | 14                          | 7        | 508        |
|                         | 19       | B                                     | 15 | 20     | 37           | 10-3-69            | P          | open        | 50               | 9                    | 24         | 0          | 56.3            | 8                           | 3        | 451        |
|                         | 20       | L                                     | 10 | 20     | 37           | 10-19-69           | P          | open        | 50               | 4                    | 24         | 0          | 56.3            | 26                          | 114      | 4384       |
|                         | 21       | J                                     | 10 | 20     | 37           | 10-5-69            | P          | open        | 50               | 10                   | 24         | 0          | 56.3            | 29                          | 43       | 1493       |

No well will be assigned an allowable greater than the amount of oil produced on the official test.  
During gas-oil ratio test, each well shall be produced at a rate not exceeding the top unit allowable for the pool in which well is located by more than 25 percent. Operator is encouraged to take advantage of this 25 percent tolerance in order that well can be assigned increased allowables when authorized by the Commission.  
Gas volumes must be reported in MCF measured at a pressure base of 15.025 psia and a temperature of 60° F. Specific gravity base will be 0.60.  
Report casing pressure in lieu of tubing pressure for any well producing through casing.  
Mail original and one copy of this report to the district office of the New Mexico Oil Conservation Commission in accordance with Rule 301 and appropriate pool rules.

I hereby certify that the above information is true and complete to the best of my knowledge and belief.

  
(Signature)

Administrative Section Chief

(Title)

October 20, 1969

(Date)

NMOGC. (2) VDB FILE (2)

NEW MEXICO OIL CONSERVATION COMMISSION  
GAS-OIL RATIO TESTS

C-116  
Revised 1-1-65

| Operator   |          | Pool               |    | County  |    |              |        |            |             |                  |                      |                   |           |            |            |                             |
|--|----------|--------------------|----|---|----|--------------|--------|------------|-------------|------------------|----------------------|-------------------|-----------|------------|------------|-----------------------------|
| Continental Oil Company                          |          | Monument Tubb      |    | Lea   |    |              |        |            |             |                  |                      |                   |           |            |            |                             |
| Address<br>P.O. Box 460, Hibbs, New Mexico 88240 |          | TYPE OF TEST - (X) |    | Completion <input type="checkbox"/> Special <input checked="" type="checkbox"/> |    |              |        |            |             |                  |                      |                   |           |            |            |                             |
| LEASE NAME                                       | WELL NO. | LOCATION           |    |   |    | DATE OF TEST | STATUS | CHOKE SIZE | TBG. PRESS. | DAILY ALLOW-ABLE | LENGTH OF TEST HOURS | PROD. DURING TEST |           |            |            | GAS - OIL RATIO CU.FT./BBL. |
|  |          | U                  | S  | T   | R  |              |        |            |             |                  |                      | WATER BBL.S.      | GRAV. OIL | OIL BBL.S. | GAS M.C.F. |                             |
| Britt B  | 18       | N                  | 10 | 20  | 37 | 10-19-69F    |        | 32/64      | 200         | 21               | 24                   | 0                 | 36.3      | 6          | 42.4       | 7,066                       |
|  | 19       | B                  | 15 | 20  | 37 | 9-29-69F     |        | open       | 50          | 4                | 24                   | 0                 | 36.3      | 5          | TSTM       | 0                           |
|  | 20       | L                  | 10 | 20  | 37 | 9-30-69F     |        | 32/64      | 120         | 21               | 24                   | 1                 | 36.3      | 3          | 1          | 589                         |
|  | 21       | J                  | 10 | 20  | 37 | 10-2-69F     |        | 28/64      | 100         | 17               | 24                   | 0                 | 36.3      | 2          | 0          | 0                           |

No well will be assigned an allowable greater than the amount of oil produced on the official test.

During gas-oil ratio test, each well shall be produced at a rate not exceeding the top unit allowable for the pool in which well is located by more than 25 percent. Operator is encouraged to take advantage of this 25 percent tolerance in order that well can be assigned increased allowables when authorized by the Commission.

Gas volumes must be reported in MCF measured at a pressure base of 15.025 psia and a temperature of 60° F. Specific gravity base will be 0.60.

Report casing pressure in lieu of tubing pressure for any well producing through casing.

Mail original and one copy of this report to the district office of the New Mexico Oil Conservation Commission in accordance with Rule 301 and appropriate pool rules.

I hereby certify that the above information is true and complete to the best of my knowledge and belief.

(Signature)

Administrative Section Chief

(Title)

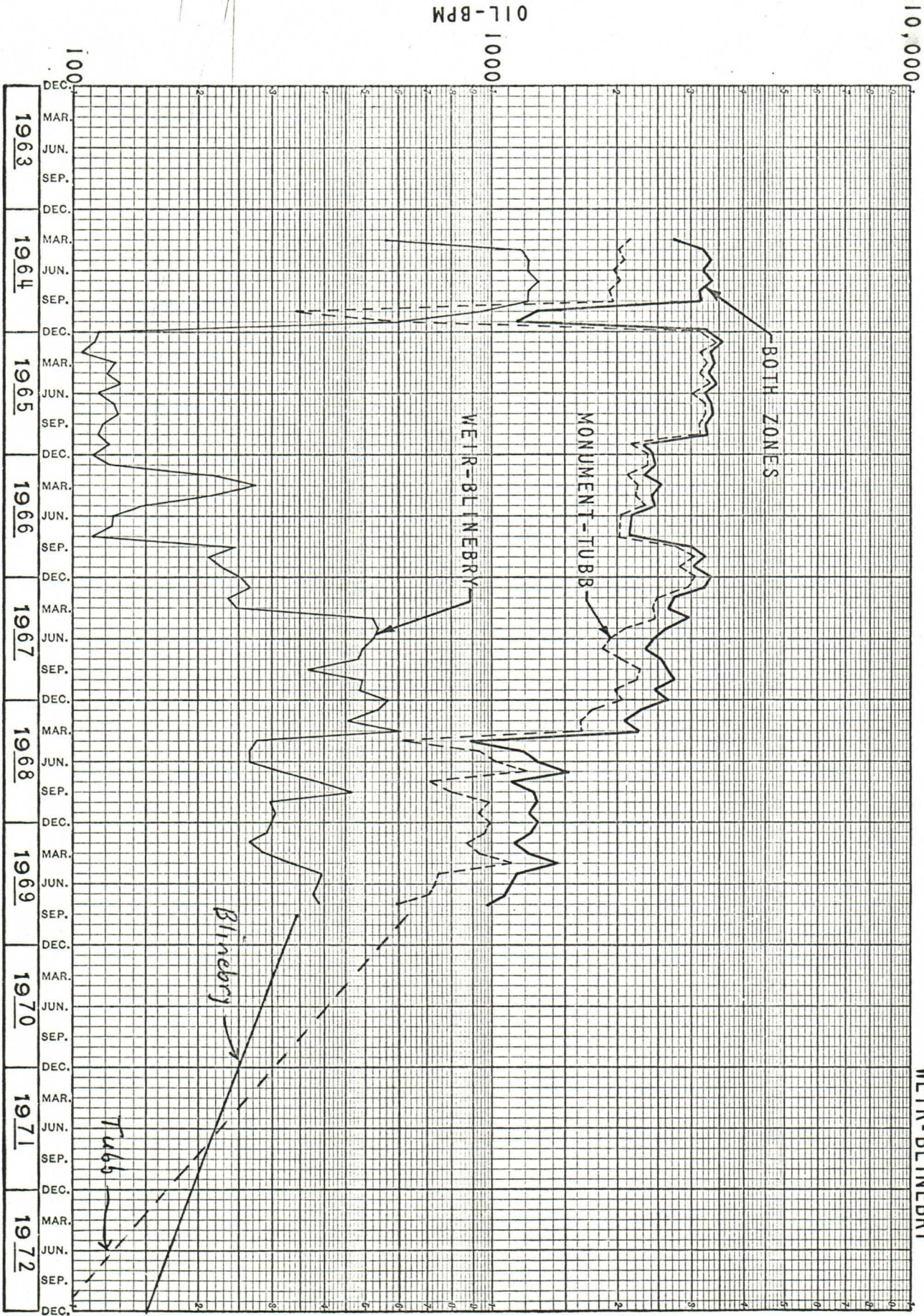
October 20, 1969

(Date)

NMOCG (2) VDB FILE (2)



BRITT B NO. 21  
MONUMENT-TUBB  
WEIR-BLINEBRY



011-BPM