



DEC 12 1969

# CONTINENTAL OIL COMPANY

P. O. Box 460  
Hobbs, New Mexico  
December 10, 1969

✓ New Mexico Oil Conservation Commission (2)  
P. O. Box 2088  
Santa Fe, New Mexico

DHC-26  
due 1-1-70

Attention of Mr. A. L. Porter, Jr., Secretary Director

Gentlemen:

Subject: Application for Downhole Commingling  
Lockhart B-14 "A" Well No. 1 - H-14-21S-37E

Continental Oil Company, Box 460, Hobbs, New Mexico, as operator of the Lockhart B-14 "A" Lease respectfully requests administrative approval under the provisions of Order No. R-3845 to commingle in the well bore production from the Drinkard and Terry-Blinebry Pools in its Lockhart B-14 "A" Well No. 1 located in Unit H of Section 14, T21S, R37E, Lea County, New Mexico. This dual completion was authorized by Order No. R-1163. The attached plat shows the Lockhart B-14 "A" Lease outlined in red and the No. 1 well by the red circle.

Attached hereto are forms C-116 showing the results of tests taken within the last 30 days on the two zones in this well. As shown by these tests, the combined producing rate is 10 barrels oil, 4 barrels water and 1054 MCF gas per day.

On December 2, 1969, the bottom hole pressure in the Terry-Blinebry zone which is capable of flowing, was 634 psi after shut in of 24 hours. The estimated bottom hole pressure after 24 hour shut in of the Drinkard zone, which is artificially lifted, is 300 psi based on the surface shut in pressure observed during packer-leakage test. The commingled production will be artificially lifted.

Attached hereto is a production decline curve for each zone. The future production from the Drinkard zone is estimated by the extension of the curve. Since the Drinkard demonstrates a consistent decline rate, we propose to allocate this zone's production on the curve extension and the remainder of the well's production to the Terry-Blinebry.

As shown on the attached C-116's, the gravity of the two oils are very similar, both being typical Permian high gravity crude oil. Observed

NMOCC  
Lockhart B-14 "A"  
Page 2

gravity will vary from month to month but any reduction in price per barrel during a given month, will be more than compensated by a reduction of loss of volume and gravity as a result of evaporation during time in storage. The commingled production will be handled in the Terry-Blinebry battery.

The Lockhart B-14 "A" is a federal lease and a copy of this application is being furnished the U.S.G.S. and to all offset operators. Your further handling and approval of this application will be sincerely appreciated.

Yours very truly,

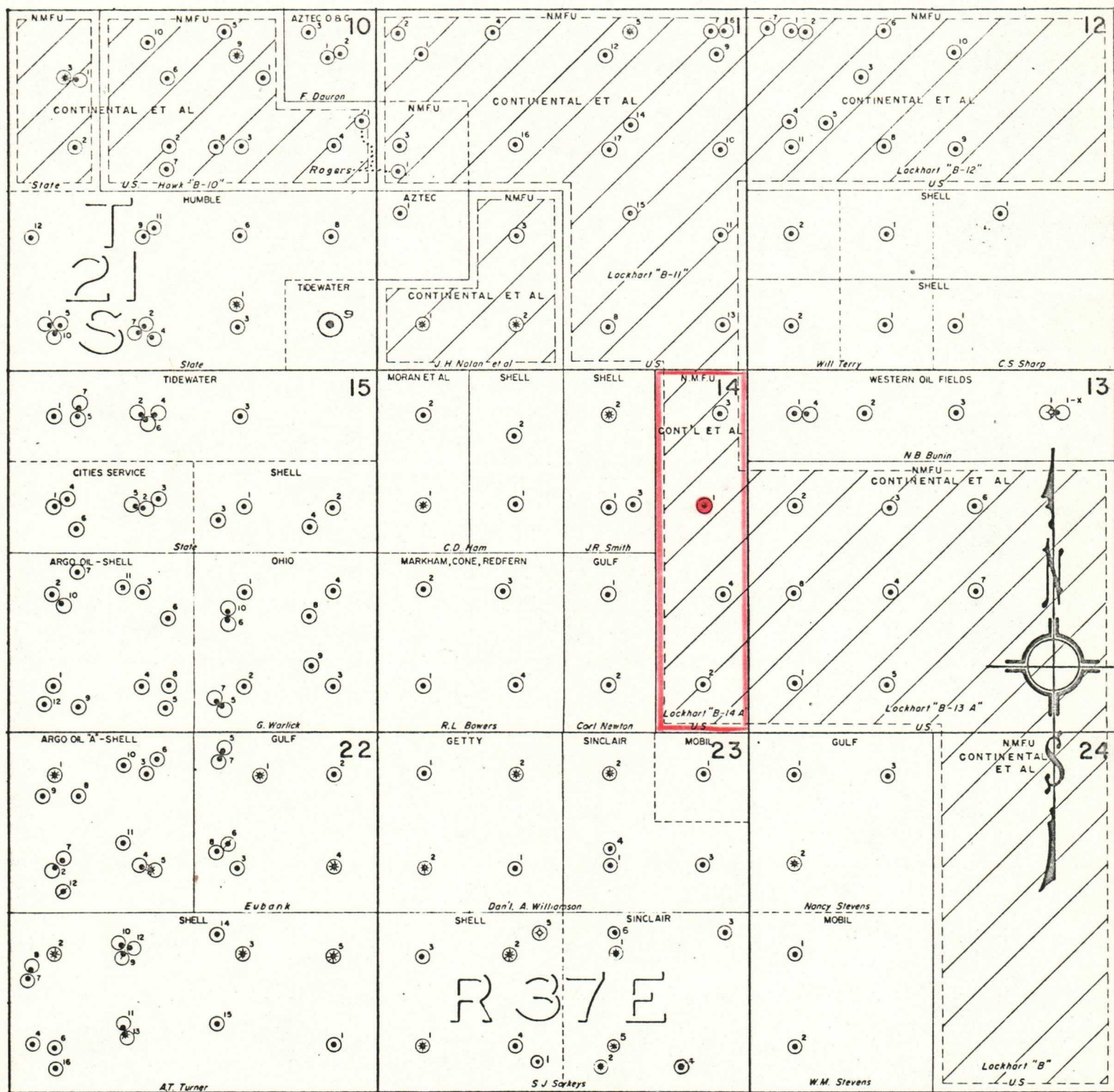


G. C. Jamieson  
Assistant Division Manager

VTL-JS  
CC: NMOCC-Hobbs  
USGS-Hobbs (2)

RLA JJB JWK

Western Oil Fields  
Shell Oil Company  
Gulf Oil Corporation



CONTINENTAL OIL COMPANY  
 PRODUCTION DEPARTMENT  
 HOBBS DIVISION  
 LOCKHART B-14 "A" LEASE PLAT  
 LEA COUNTY, NEW MEXICO  
 SCALE: 1" 2000'

Operator		Pool		County											
Continental Oil Company		Terry Blinebry		Lea											
Address		TYPE OF TEST - (X)		Completion <input type="checkbox"/> Special <input checked="" type="checkbox"/>											
Box 460, Hobbs, N. M. 88240		SCHEDULED <input type="checkbox"/>													
LEASE NAME	WELL NO.	LOCATION				DATE OF TEST	CHOKE SIZE	TBG. PRESS.	DAILY ALLOW-ABLE	LENGTH OF TEST HOURS	PROD. DURING TEST				GAS - OIL RATIO CU.FT./BBL.
		U	S	T	R						WATER BLS.	GRAV. OIL	OIL BLS.	GAS M.C.F.	
Lockhart B-11 Lockhart B-11 Lockhart B-11 Lockhart B-14A Lockhart B-11	10	H	11	21	37	11-10-69P	Open	40	12	24	5	38	11	71	6,450
	4	C	11	21	37	11-22-69P	Open	35	7	24	2	38	10	52	5,200
	11	I	11	21	37	11-13-69F	SCF	200	15	24	2	39	12	98	8,160
	1	H	14	21	37	11-11-69F	Open	140	5	24	2	39	5	1030	206,000
	16	F	11	20	37	11-23-69F	32/64	120	51	24	5	38	23	343	14,900

No well will be assigned an allowable greater than the amount of oil produced on the official test.


During gas-oil ratio test, each well shall be produced at a rate not exceeding the top unit allowable for the pool in which well is located by more than 25 percent. Operator is encouraged to take advantage of this 25 percent tolerance in order that well can be assigned increased allowables when authorized by the Commission.

Gas volumes must be reported in MCF measured at a pressure base of 15.025 psia and a temperature of 60° F. Specific gravity base will be 0.60.

Report casing pressure in lieu of tubing pressure for any well producing through casing.

Mail original and one copy of this report to the district office of the New Mexico Oil Conservation Commission in accordance with Rule 301 and appropriate pool rules.

I hereby certify that the above information is true and complete to the best of my knowledge and belief.

  
(Signature)

Administrative Section Chief  
(Title)

12-5-69  
(Date)

Operator Continental Oil Company Pool Drinkard County Lea

Address Box 460, Hobbs, N. M. 88240

TYPE OF TEST - (X) ☒ Scheduled ☐ Completion ☐ Special ☒

LEASE NAME	WELL NO.	LOCATION				DATE OF TEST	CHOKE SIZE	TBG. PRESS.	DAILY ALLOW-ABLE	LENGTH OF TEST HOURS	PROD. DURING TEST				GAS - OIL RATIO CU.FT./BBL
		U	S	T	R						WATER BBL.S.	GRAV. OIL	OIL BBL.S.	GAS M.C.F.	
Lockhart B-11	10	H	11	21	37	11-17-69P	Open	40	5	24	1	37	2	50	25,000
Lockhart B-11	4	C	11	21	37	Shut-in; pumping unit moved.					Last test				
Hawk A	5	D	9	21	37	11-22-69P	Open	40	4	24	1	38	7	25	3,571
Hawk A	4	U	4	21	37	Shut-in - pumping unit moved.									
Hawk B-3	13	X	3	21	37	11-16-69P	Open	45	2	24	0	37	2	33	16,500
Lockhart B-11	11	I	11	21	37	11-13-69P	Open	40	10	24	1	36	10	32	3,200
Lockhart B-14A	1	H	14	21	37	11-15-69P	Open	30	8	24	2	38	5	24	4,800
Lockhart B-11	16	F	11	20	37	Shut-in - pumping unit moved.									
Lockhart B-12	3	C	12	21	37	11-22-69P	Open	40	33	24	3	38	13	53	4,070

No well will be assigned an allowable greater than the amount of oil produced on the official test.

During gas-oil ratio test, each well shall be produced at a rate not exceeding the top unit allowable for the pool in which well is located by more than 25 percent. Operator is encouraged to take advantage of this 25 percent tolerance in order that well can be assigned increased allowables when authorized by the Commission.

Gas volumes must be reported in MCF measured at a pressure base of 15.025 psia and a temperature of 60° F. Specific gravity base will be 0.60.

Report casing pressure in lieu of tubing pressure for any well producing through casing.

Mail original and one copy of this report to the district office of the New Mexico Oil Conservation Commission in accordance with Rule 301 and appropriate pool rules.

I hereby certify that the above information is true and complete to the best of my knowledge and belief.

Administrative Section Chief

*[Signature]*

NMOCC (2) FILE

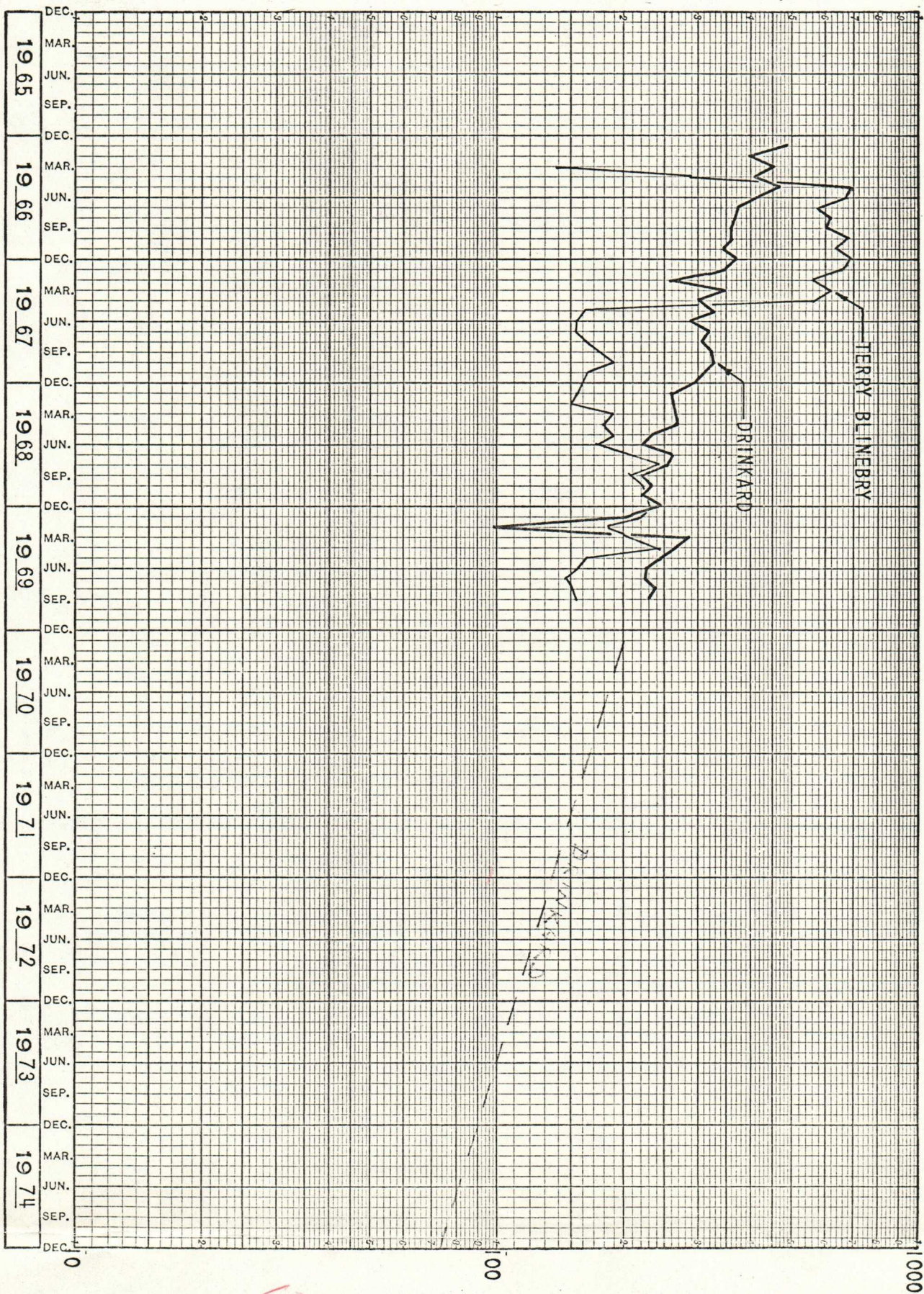
12-5-69

(Date)





LOCKHART B-14-A NO. 1  
DRINKARD-TERRY BLINEBRY



155  
2/20/71