

# SHELL OIL COMPANY

P. O. BOX 1509  
MIDLAND, TEXAS 79701

December 28, 1971

Subject: Application for Downhole Commingling  
Argo No. 3  
Drinkard Field, Section 15, T-215  
Lea County, New Mexico

New Mexico Oil Conservation Commission  
P. O. Box 2088  
Santa Fe, New Mexico 87501

Attention Mr. A. L. Porter, Jr., Secretary Director

Gentlemen:

RECEIVED

JAN - 3 1972

OIL CONSERVATION COMM.  
SANTA FE

Shell Oil Company respectfully requests administrative approval under provisions of Order No. R-3845 to commingle in the wellbore production from the Blinebry and Drinkard pools in its Argo No. 3, located in Unit K of Section 15, T-21-S, R-37-E, Lea County, New Mexico. This dual completion was authorized by Administrative Order No. MC1356 dated July 22, 1963. The attached plat depicts the Argo lease as outlined in red and the No. 3 well as indicated by the red circle.

The attached Form C-116 shows the results of production tests taken within the last 30 days on both the Blinebry and Drinkard Zones. Both the Blinebry and Drinkard Zones are currently produced by intermittent flow up 2 1/16" OD tubing. The Static bottom hole pressures are estimated at 750 and 850 psi for the Blinebry and Drinkard Zones, respectively.

The attached production curves depict the production history for each zone and an estimate of future performance as shown by the dashed line. We propose to allocate production from each zone by means of this curve extension.

Production from the Blinebry and Drinkard formations has been commingled at the tank battery for a number of years with no indication of fluid incompatibility. Since the crudes are commingled at the tank battery before being sold, no difference in value should result by commingling the production within the wellbore.

A copy of this application is being furnished at all offset operators. Your further handling of approval of this application will sincerely be appreciated.

Yours very truly,

*B.A. Lowery*

For: Jack L. Mahaffey  
Production Manager  
Mid-Continent Division

RRS:VJ

Attachments

cc - Offset Operators (Per Attached List)

New Mexico Oil Conservation Commission  
P. O. Box 1980  
Hobbs, New Mexico 88240

OFFSET OPERATORS TO  
ARGO NO. 3  
LEA COUNTY, NEW MEXICO

Amerada Hess Corporation  
Western United Life Building  
P. O. Box 591  
Midland, Texas 79701

Cities Service Oil Company  
800 Vaughn Building  
Midland, Texas 79701

Gulf Oil Company - U. S.  
P. O. Box 1150  
Midland, Texas 79701

Marathon Oil Company  
P. O. Box 552  
Midland, Texas 79701

NEW MEXICO OIL CONSERVATION COMMISSION  
GAS-OIL RATIO TESTS

C-116  
Revised 1-1-65

Operator		Pool		County		TYPE OF TEST - (X)		Completion		Spectral			
Shell Oil Company		Drinkard		Ira						<input checked="" type="checkbox"/>			
Address		DATE OF TEST		LOCATION		CHOKES		DAILY ALLOWABLE		LENGTH OF TEST HOURS			
Box 1509, Midland, TX 79701													
WELL NO.	LEASE NAME	U	S	T	R	DATE OF TEST	SIZE	TBG. PRESS.	DAILY ALLOWABLE	WATER BBLs.	GRAV. OIL BBLs.	OIL M.C.F.	GAS - OIL RATIO CU.FT./BBL
3	Argo	K	15	21	37	12-21-71	32/64	200	14	0	39.0	10	10,000

No well will be assigned an allowable greater than the amount of oil produced on the official test.  
During gas-oil ratio test, each well shall be produced at a rate not exceeding the top unit allowable for the pool in which well is located by more than 25 percent. Operator is encouraged to take advantage of this 25 percent tolerance in order that well can be assigned increased allowables when authorized by the Commission.  
Gas volumes must be reported in MCF measured at a pressure base of 15.025 psia and a temperature of 60° F. Specific gravity base will be 0.60.  
Report casing pressure in lieu of tubing pressure for any well producing through casing.  
Mail original and one copy of this report to the district office of the New Mexico Oil Conservation Commission in accordance with Rule 301 and appropriate pool rules.

I hereby certify that the above information is true and complete to the best of my knowledge and belief.

*R. A. Halverson*  
(Signature)  
Product Accounting Supervisor  
(Title)  
December 27, 1971  
(Date)

NEW MEXICO OIL CONSERVATION COMMISSION  
GAS-OIL RATIO TESTS

C-116  
Revised 1-1-65

Operator <b>Shell Oil Company</b>		Pool <b>Blinebry Oil</b>		County <b>Lea</b>											
Address <b>P. O. Box 1509, Midland, Texas 79701</b>		TYPE OF TEST - (X)		Completion <input type="checkbox"/> Scheduled <input type="checkbox"/>											
LEASE NAME	WELL NO.	LOCATION			DATE OF TEST	CHOKE SIZE	TBG. PRESS.	DAILY ALLOW-ABLE	LENGTH OF TEST HOURS	PROD. DURING TEST			GAS - OIL RATIO CU.FT./BBL		
		U	S	T						R	WATER BBLs.	GRAV. OIL		OIL BBLs.	GAS M.C.F.
Argo	3	K	15	21	37	12-17	HL 32/64	-	18	24	0	38	19	382	20105

No well will be assigned an allowable greater than the amount of oil produced on the official test.

During gas-oil ratio test, each well shall be produced at a rate not exceeding the top unit allowable for the pool in which well is located by more than 25 percent. Operator is encouraged to take advantage of this 25 percent tolerance in order that well can be assigned increased allowables when authorized by the Commission.

Gas volumes must be reported in MCF measured at a pressure base of 15.025 psia and a temperature of 60° F. Specific gravity base will be 0.60.

Report casing pressure in lieu of tubing pressure for any well producing through casing.

Mail original and one copy of this report to the district office of the New Mexico Oil Conservation Commission in accordance with Rule 301 and appropriate pool rules.

I hereby certify that the above information is true and complete to the best of my knowledge and belief.

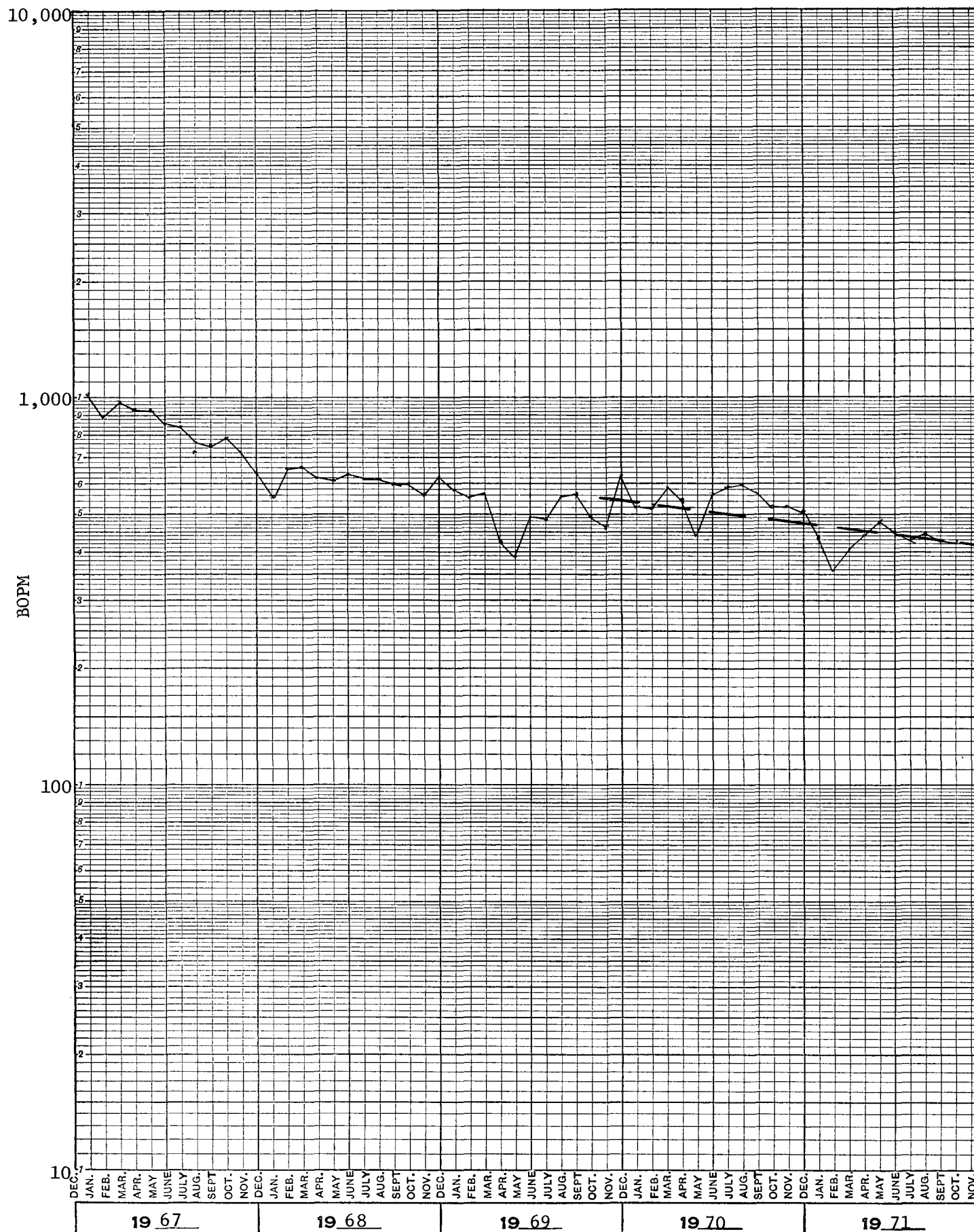
*Ralph Halverson*  
(Signature)  
R. A. Halverson  
(Title)

Product Accounting Supervisor

12-21-77  
(Date)

ARGO 3 BLINEBRY

MONTHLY OIL PRODUCTION



IN STOCK DIRECT FROM CODEX BOOK CO. INC. NORWOOD, MASS. 02062  
PRINTED IN U.S.A.

NO. 4257. TEN YEARS BY MONTHS X 3 3-INCH CYCLES RATIO RULING

GRAPH PAPER

ARGO 3 DRINKARD

MONTHLY OIL PRODUCTION

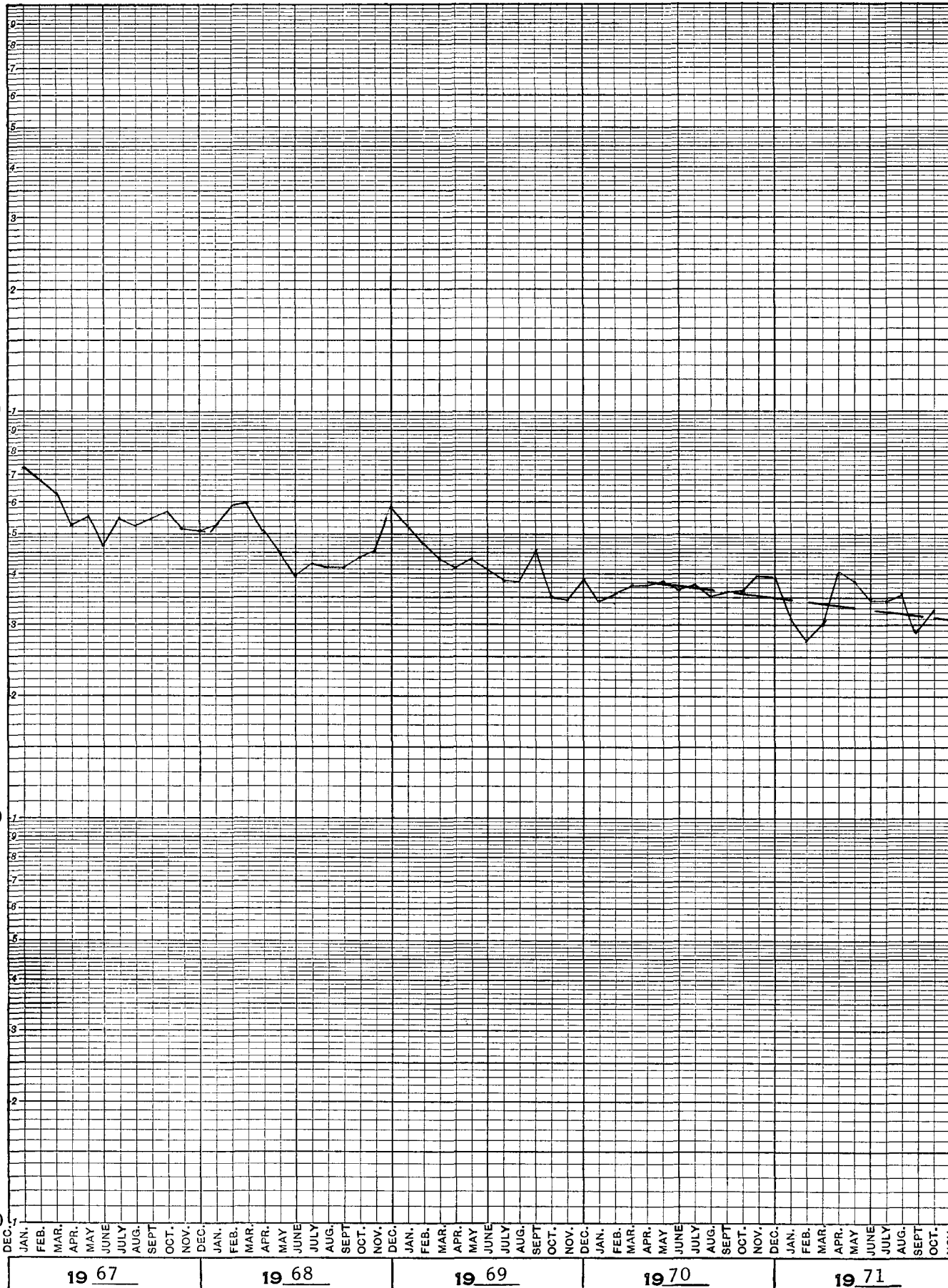
10,000

1,000

100

10

BOPM



19 67

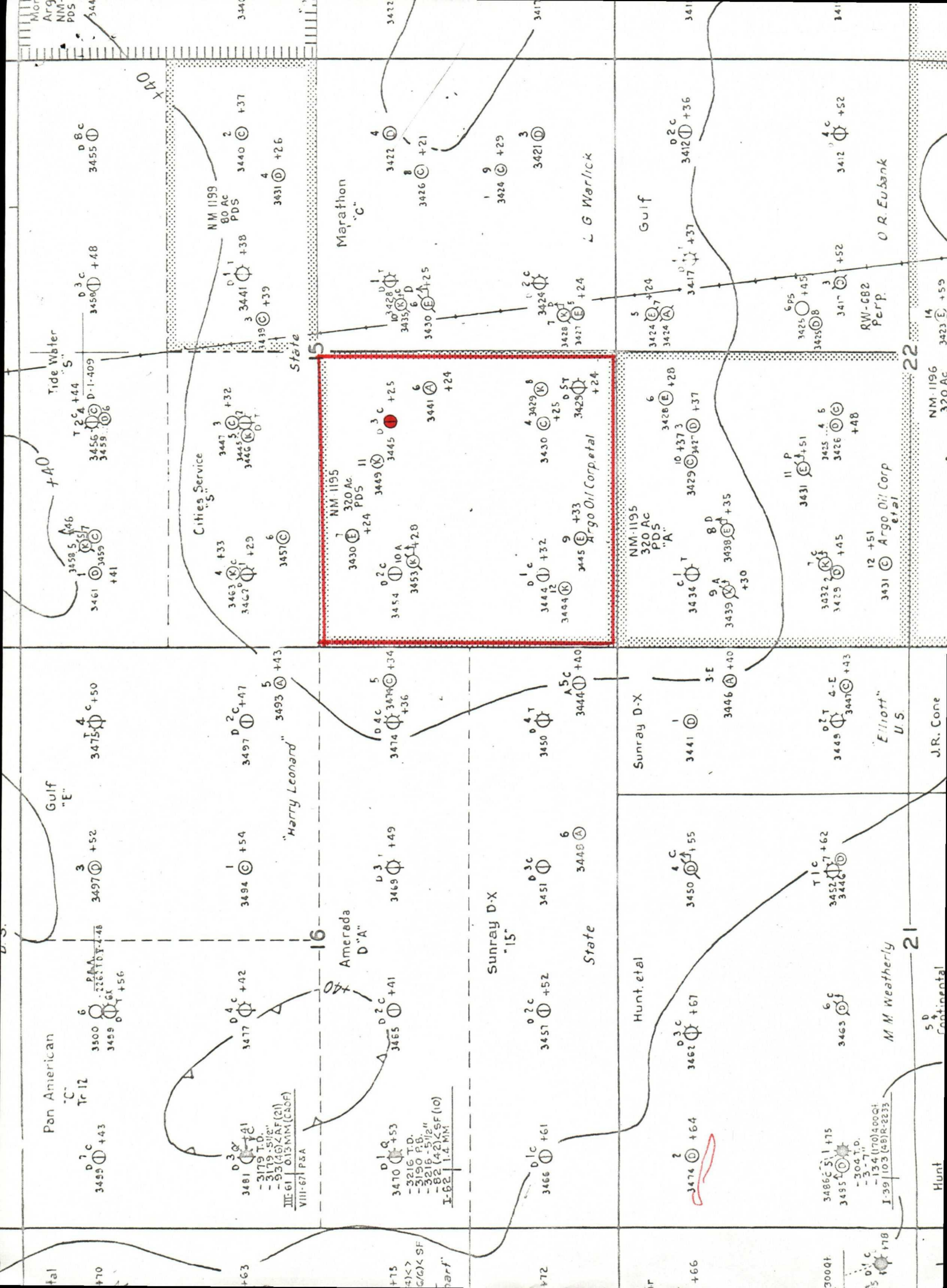
19 68

19 69

19 70

19 71

NO. 4257. TEN YEARS BY MONTHS X 3 3-INCH CYCLES RATIO RULING  
IN STOCK DIRECT FROM CODEX BOOK CO. INC. NORWOOD, MASS. 02062  
PRINTED IN U.S.A.  
codex®  
GRAPH PAPER



Pan American

Gulf

"E"

Tide Water

"S"

"C"

"A"

"B"

Amerada

"D"

"A"

"C"

"B"

"A"

"B"

"C"

Sunray D-X

"15"

"A"

"C"

"B"

"A"

"B"

"C"

State

"A"

"C"

"B"

"A"

"B"

"C"

"A"

Hunt et al

"A"

"C"

"B"

"A"

"B"

"C"

"A"

2

3

4

5

6

7

8

9

10

11

12

13

14

15

16

17

18

19

20

21

22

23

24

25

26

27

28

29

30

31

32

33

34

35

36

37

38

39

40

41

42

43

44

45

46

47

48

49

50

51

52

53

54

55

56

57

58

59

60

61

62

63

64

65

66

67

68

69

70

71

72

73

74

75

76

77

78

79

80

81

82

83

84

85

86

87

88

89

90

91

92

93

94

95

96

97

98

99

100

101

102

103

104

105

106

107

108

109

110

111

112

113

114

115

116

117

118

119

120

121

122

123

124

125

126

127

128

129

130

131

132

133

134

135

136

137

138

139

140

141

142

143

144

145

146

147

148

149

150

151

152

153

154

155

156

157

158

159

160

161

162

163

164

165

166

167

168

169

170

171

172

173

174

175

176

177

178

179

180

181

182

183

184

185

186

187

188

189

190

191

192

193

194

195

196

197

198

199

200

201

202

203

204

205

206

207

208

209

210

211

212

213

214

215

216

217

218

219

220

221

222

223

224

225

226

227

228

229

230

231

232

233

234

235

236

237

238

239

240

241

242

243

244

245

246

247

248

249

250

251

252

253

254

255

256

257

258

259

260

261

262

263

264

265

266

267

268

269

270

271

272

273

274

275

276

277

278

279

280

281

282

283

284

285

286

287

288

289

290

291

292

293

294

295

296

297

298

299