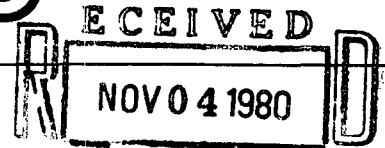


typed -



L. P. Thompson
Division Manager

John R. Kemp
Assistant Division Manager

Production Department
Hobbs Division
North American Production

Conoco Inc.
P. O. Box 460
1001 North Turner
Hobbs, NM 88240
(505) 393-4141

OIL CONSERVATION DIVISION
SANTA FE

DHC - 328
Due - 11/24/80

October 29, 1980

New Mexico Oil Conservation Division
Department of Energy & Minerals
State of New Mexico
P.O. Box 2088
Santa Fe, N. M. 87501

Blinebry Oil & Gas
Warren - Tubb Gas

Attention: Mr. Joe D. Ramey, Director

Gentlemen:

Application for Downhole Commingling - Warren Unit No. 64

Conoco Inc. respectfully requests approval to downhole commingle Warren Unit No. 64 located in Unit A, Section 26, T-20S, R-38E, Lea County, New Mexico.

✓ Warren Unit No. 64 is completed in the Blinebry Oil & Gas and Warren Tubb Oil zones. Attached are two form C-116's showing current oil, gas, and water production from each zone. A wellbore schematic and letter to offset operators is also attached.

Bottom hole pressure tests measured at an estimated rate as follows:

Blinebry Oil & Gas	2180 psi
Warren Tubb Oil	2440 psi

Fluid characteristics of each zone are shown below:

	<u>Oil Gravity</u>	<u>PRODUCTION DATA</u>		
		<u>Daily Volume</u>		
		<u>Oil Bbls</u>	<u>Gas Mcf.</u>	<u>Oil Value</u>
Blinebry Oil & Gas	38.2	10	109	36.00
Warren Tubb Oil	40.1	10	9	19.73

A letter from the USGS indicating their approval is also attached.

Your approval of this application authorizing the commingling in the wellbore of Blinebry Oil & Gas and Warren Tubb Oil zone production as described above is requested.

Yours very truly,

John R. Kemp

Tubb pf @ 6404' (lowermost)
max prod: 40 BOPD

BL - oil 20.67 Gas 92
Tubb - 10.33 119
9m 8

MJJ:pls
Enc.
cc:NMOCD (Hobbs)

WARREN UNIT #64

T. SALT -

B. SALT -

Sec 16, T-10S, R-31E

660' FNL & 660' FEL

ELEVATION - 3525' GL

KBM: 11' AGL

9 5/8" 36# K-55 SURFACE CASING
@ 1522' W/ 600 SXS CIRC.

BLINERBY PERES: 6012', 6019', 6032', 6045',
6051', 6054', 6061', 6068', 6098', 6105', 6117',
6121', 6133', 6140', 6143' (1 JSPF)

2 3/8" BUTTRESS TBG. @ 6226'
TRIPLE STRING PARALLEL ANCHOR @ 6226'

1 7/8" I.J. VENT STRING

OTIS 7" 26-32# "WB" PERM. PACKER
W/ VENT HEAD AND SEAL ASSEMBLY @ 6415'

TUBB PERES: 6637', 6640', 6670', 6682', 6706',
6711', 6719', 6741', 6750', 6754', 6757', 6763',
6769', 6796', 6801', 6804' (1 JSPF)

2 3/8" EUE + BUTTRESS TBG. @ 6819'

DOD TO FC @ 6836'

7" 26# K-55 PRODUCTION CASING

TD 6870'

@ 68

MADE BY

CONTINENTAL OIL COMPANY
CALCULATION SHEET

JOHNS. COMPLETED - APRIL, 1979

CHECKED BY

DATE

TITLE WARREN UNIT #64

NO. OF

FILE

SHEET

CONOCO

RECEIVED

NOV 04 1980

OIL CONSERVATION DIVISION
SANTA FE

L. P. Thompson
Division Manager

John R. Kemp
Assistant Division Manager

Production Department
Hobbs Division
North American Production

Conoco Inc.
P. O. Box 460
1001 North Turner
Hobbs, NM 88240
(505) 393-4141

October 29, 1980

Gulf Oil Corporation
Box 670
Hobbs, New Mexico 88240

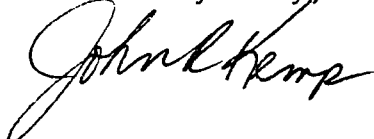
Gentlemen:

Application to Downhole Commingle - Warren Unit No. 64

Conoco Inc. is making application to the NMOCD to downhole commingle Blinbry Oil & Gas and Warren Tubb Oil Production in the subject well, located in Section 26, T-20S, R-38E, Lea County, New Mexico. A location plat is attached.

As required under rule 303 (c) of the NMOCD's Rules and Regulations, this letter will serve as notification of the proposed commingling to all offset operators.

Yours very truly,



MJJ:pls
Attachments



OIL CONSERVATION DIVISION
SANTA FE

L. P. Thompson
Division Manager

John R. Kemp
Assistant Division Manager

Production Department
Hobbs Division
North American Production

Conoco Inc.
P. O. Box 460
1001 North Turner
Hobbs, NM 88240
(505) 393-4141

October 29, 1980

Llano Inc.
Broadmoor Building
Hobbs, New Mexico 88240

Gentlemen:

Application to Downhole Commingle - Warren Unit No. 64

Conoco Inc. is making application to the NMOCD to downhole commingle Blinebry Oil & Gas and Warren Tubb Oil production in the subject well, located in Section 26, T-20S, R-38E, Lea County, New Mexico. A location plat is attached.

As required under rule 303 (c) of the NMOCD's Rules and Regulations, this letter will serve as notification of the proposed commingling to all offset operators.

Yours very truly,

MJJ:pls
Attachments



L. P. Thompson
Division Manager

John R. Kemp
Assistant Division Manager

Production Department
Hobbs Division
North American Production

Conoco Inc.
P. O. Box 460
1001 North Turner
Hobbs, NM 88240
(505) 393-4141

October 28, 1980

Kornegay
101 Eagle Drive
Hobbs, New Mexico 88240

Gentlemen:

Application to Donwhole Commingle - Warren Unit No. 64

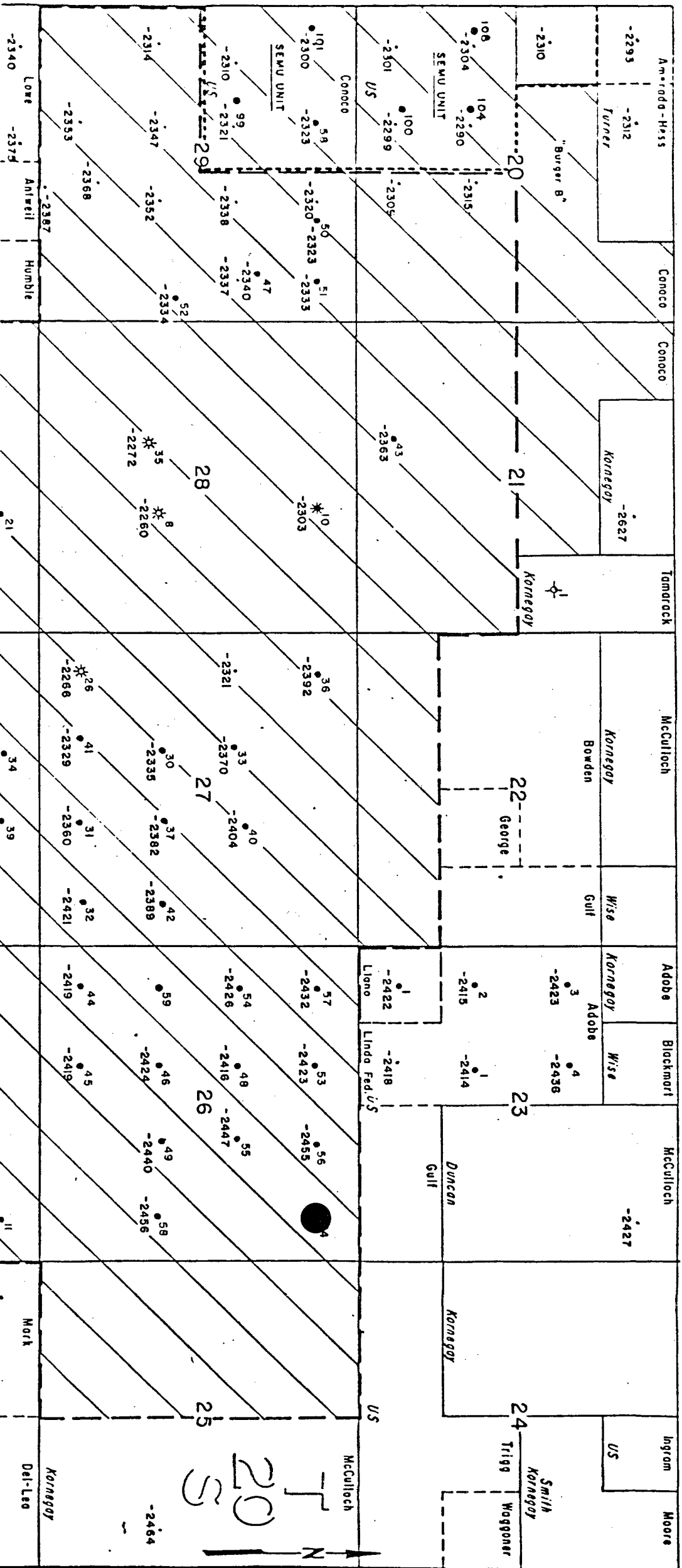
Conoco Inc. is making application to the NMOCD to downhole commingle Blinebry Oil & Gas and Warren Tubb Oil production in the subject well, located in Section 26, T-20S, R-38E, Lea County, New Mexico. A location plat is attached.

As required under rule 303 (c) of the NMOCD's Rules and Regulations, this letter well serve as notification of the proposed commingling to all offset operators.

Yours very truly,

A handwritten signature in cursive script that reads "John R. Kemp".

MJJ:pls
Attachments



CONOCO

PRODUCTION DEPARTMENT HOBBS DIVISION

WARREN UNIT
LEA COUNTY, NEW MEXICO
BLINEBRY POOL

JWH 3-79

SCALE
0 1000' 2000' 11M

LEGEND:
○ LOCATION
● OIL WELL
★ GAS WELL
◇ DRY HOLE
△ INJECTION WELL
■ ABANDONED WELL
✱ SHUT-IN WELL
⊙ SALT WATER DISPOSAL WELL
⊙ DEEPER WELL
⊙ ZONE UNTESTED

I hereby certify that the above information is true and complete to the best of my knowledge and belief.

No well will be assigned an allowable greater than the amount of oil produced on the official test.

During gas-oil ratio test, each well shall be produced at a rate not exceeding the top unit allowable for the pool in which well is located by more than 25 percent. Operator is encouraged to take advantage of this 25 percent tolerance in order that well can be assigned increased allowable when authorized by the Commission.

Gas volumes must be reported in MCF measured at a pressure base of 15.025 psia and a temperature of 60° F. Specific gravity base will be 0.56.

Report casing pressure in lieu of tubing pressure for any well producing through casing.

Mail original and one copy of this report to the district office of the New Mexico Oil Conservation Commission in accordance with Rule 30) and appropriate pool rules.

$$\text{H}_2\text{OCD} \quad (2)$$

FILE

ADMINISTRATIVE SUPERVISOR

(Title)

101111

C-116
Revised 1-1-65

No well will be assigned an allowable greater than the amount of oil produced on the official test.

During gas-oil ratio test, each well shall be produced at a rate not exceeding the top unit allowable for the pool in which well is located by more than 25 percent. Operator is encouraged to take advantage of this 25 percent tolerance in order that well can be assigned increased allowables when authorized by the Commission.

Gas volumes must be reported in MCF measured at a pressure base of 15.025 psia and a temperature of 60° F. Specific gravity base will be 0.60.

Report casing pressure in lieu of tubing pressure for any well producing through casing.

Mail original and one copy of this report to the district office of the New Mexico Oil Conservation Commission in accordance with rule 301 and appropriate pool rules.

I hereby certify that the above information is true and complete to the best of my knowledge and belief.

(Signature)

∴ Total

OIL CONSERVATION DIVISION
DISTRICT I

OIL CONSERVATION DIVISION
P. O. BOX 2088
SANTA FE, NEW MEXICO 87501

DATE November 6, 1980

RE: Proposed MC _____
Proposed DHC X _____
Proposed NSL _____
Proposed NSP _____
Proposed SWD _____
Proposed WFX _____
Proposed PMX _____

RECEIVED
NOV 12 1980
OIL CONSERVATION DIVISION
SANTA FE

Gentlemen:

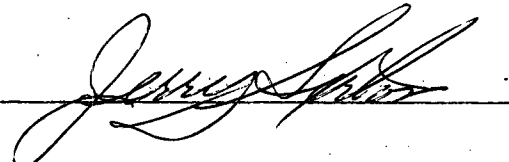
I have examined the application for the:

Conoco Inc.	Warren Unit	No. 64-A	26-20-38
Operator	Lease and Well No.	Unit, S - T - R	

and my recommendations are as follows:

O.K.---J.S.

Yours very truly,


/mc