

devon

Rec: 12-9-2004

Susp: 12-29-2009

PMES0-436234485

Devon Energy Corporation
20 North Broadway
Oklahoma City, Oklahoma 73102-82602004 DEC 9 PM 2 39 2004 DEC 9 PM 2 39
FAX

To: MIKE STOGNER

From: KEN GRAY

Fax: 505-476-3462

Date: 12/9/04

Phone:

Pages: 6 (including cover page)

Re: APACHE 25 FEB #14

CC:

☐ Urgent☒ For Review☐ Please Comment☐ Please Reply☐ Please Recycle

• Comments:

2004 DEC 2004 DEC 29 3 39 PM 2 39

2004 DEC 9 PM 2 39 2004 DEC 9 PM 2 39



Devon Energy Corporation
20 North Broadway
Oklahoma City, Oklahoma 73102-8280
Fax 405-552-8113

December 9, 2004

New Mexico Oil Conservation Division
1220 South St. Francis Drive
Santa Fe, NM 87505
Attn: Michael Stogner

RE: Apache 25 Federal #14
Section 25-T22S-R30E
Eddy County, New Mexico

Gentlemen:

Devon Energy Production Company, L.P. ("Devon"), as Operator, intends to drill the referenced horizontal Delaware well to a total vertical depth of 7,643' with a total measured depth of 11,776'. As reflected on the attached C-102, the well has been permitted at a surface location of 1254' FNL and 330' FEL with a permitted bottom hole location of 330' FNL and 330' FWL of Section 25. The initial portion of the open hole (and potentially productive) horizontal section of the well will be located 1,261.55' FEL and 1,067.69' FNL which is an unorthodox location.

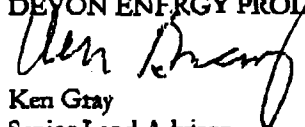
Inasmuch as the initial portion of the open hole horizontal section of the referenced well is located at an unorthodox location from that permitted by the Statewide Pool Rules, Devon respectfully requests that the Commission administratively approve this application for an unorthodox location in accordance with Division Rule 104(F)(3). This unorthodox location affects the leasehold owner in Unit letters B, G, & H. Devon is the owner of 100% Record Title of Federal Lease NM 89052 which covers Unit letters B, G & H, among other lands. Therefore, no additional notification of this application should be required, as this unorthodox location will affect Devon leasehold only.

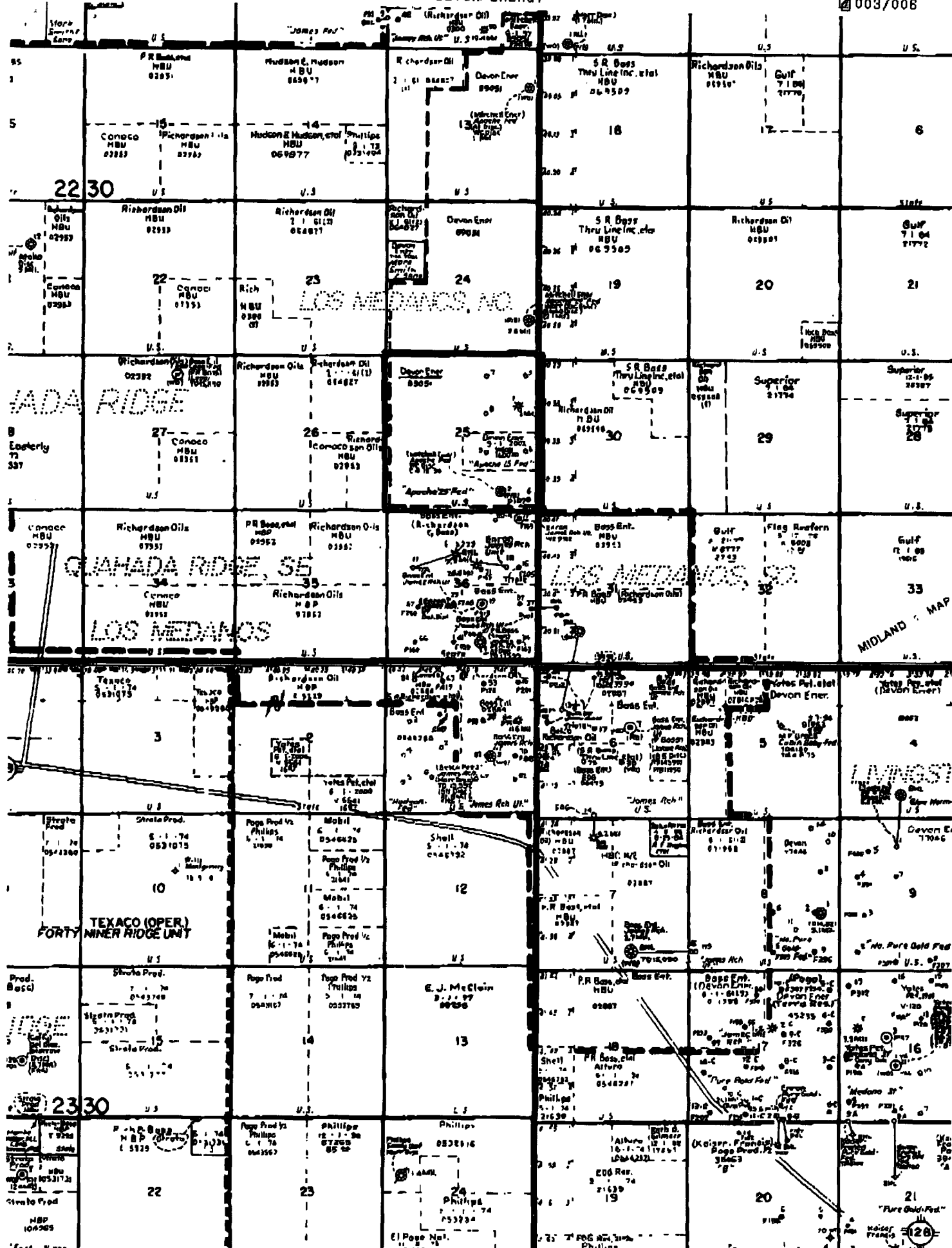
Attached for your review you will find a land plat reflecting Devon as the only affected party, a net sand isopach covering the Lower Brushy Canyon D sand, a State of New Mexico form C-102, and a Well Profile plat prepared by Baker Hughes.

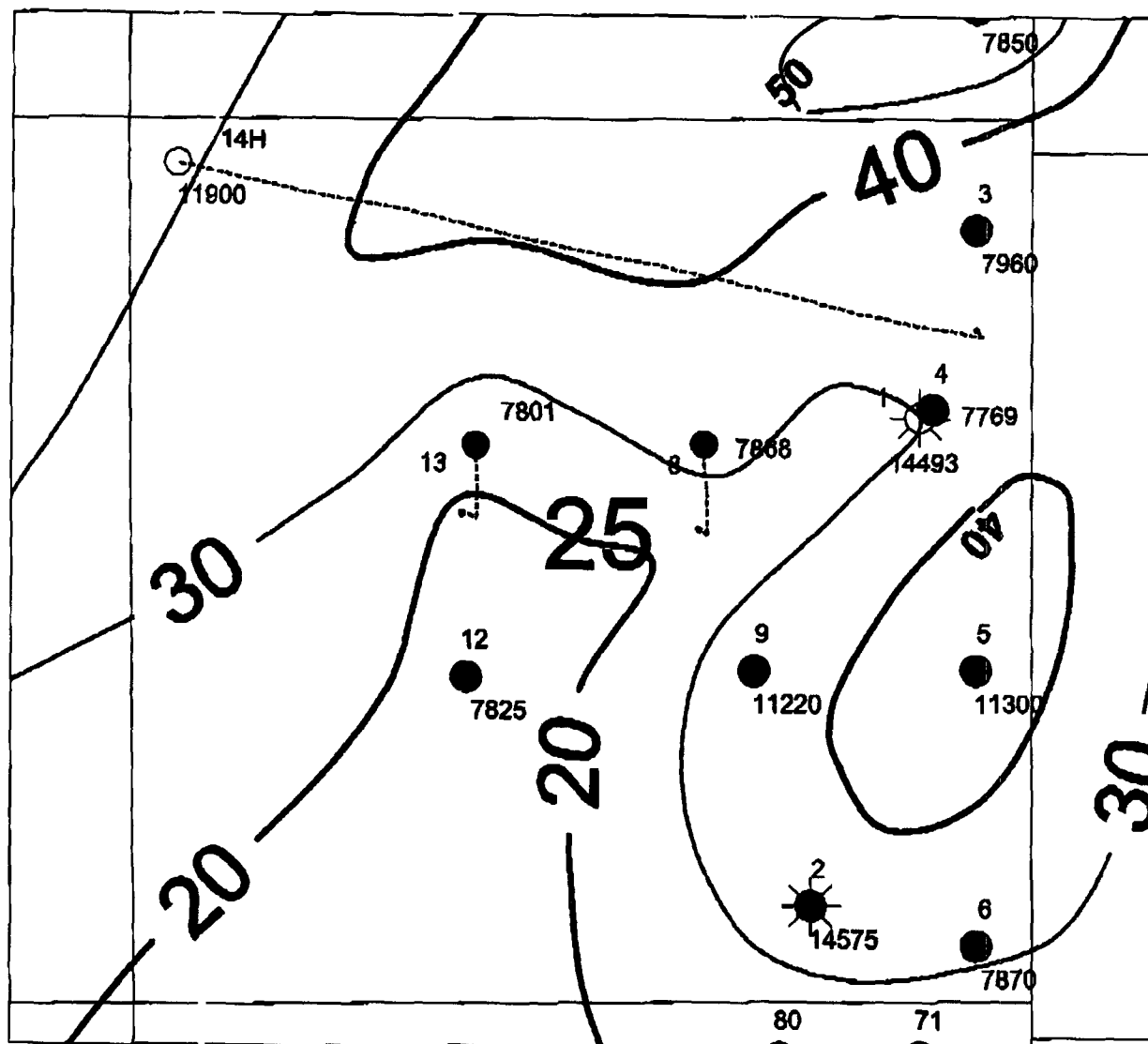
Feel free to contact the undersigned at (405) 552-4633 if there are any concerns or questions regarding this application.

Yours very truly,

DEVON ENERGY PRODUCTION COMPANY, L.P.


Ken Gray
Senior Land Advisor
KG\Apache 2i-14 UL
Enclosure





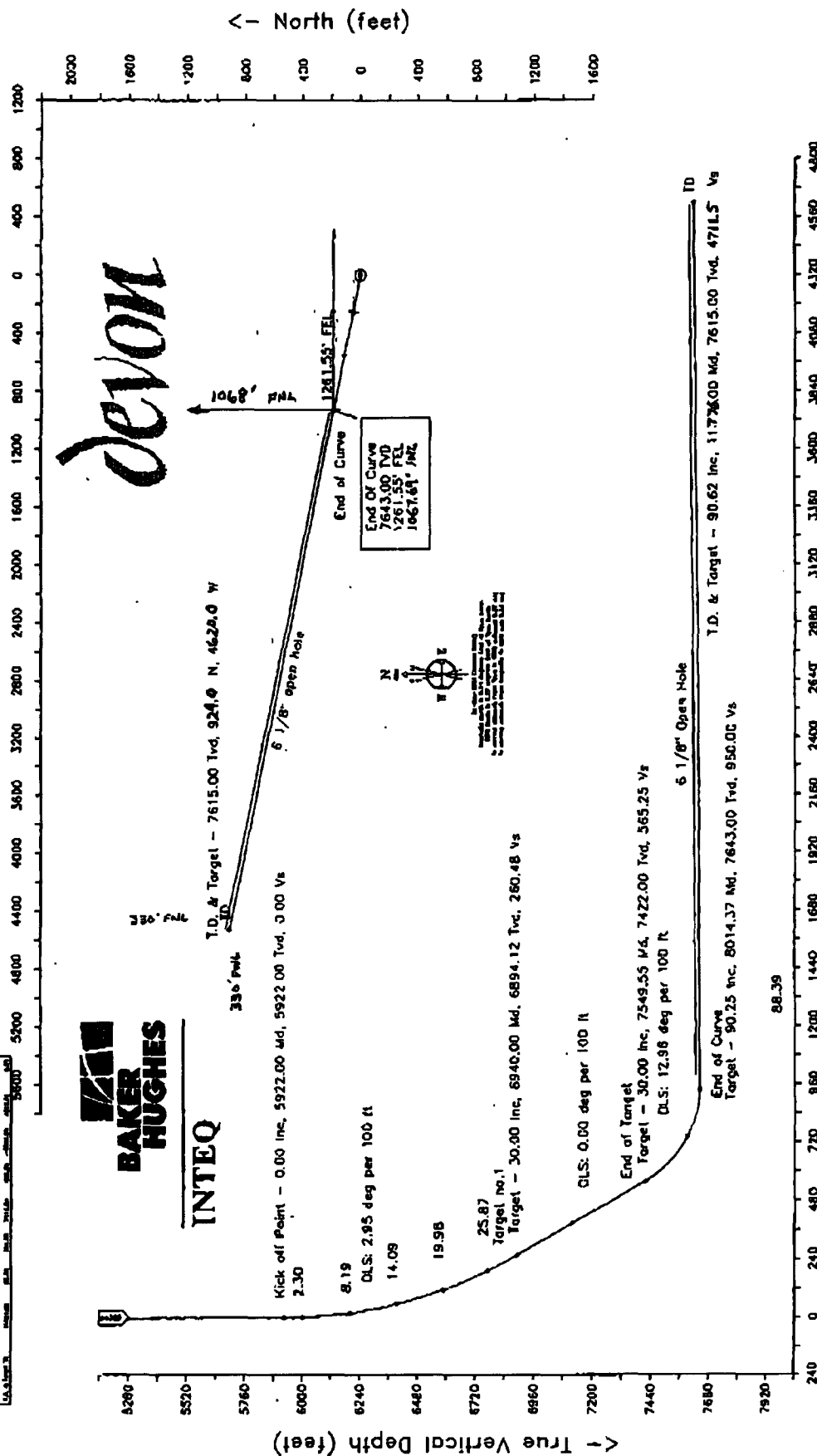
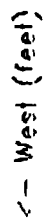
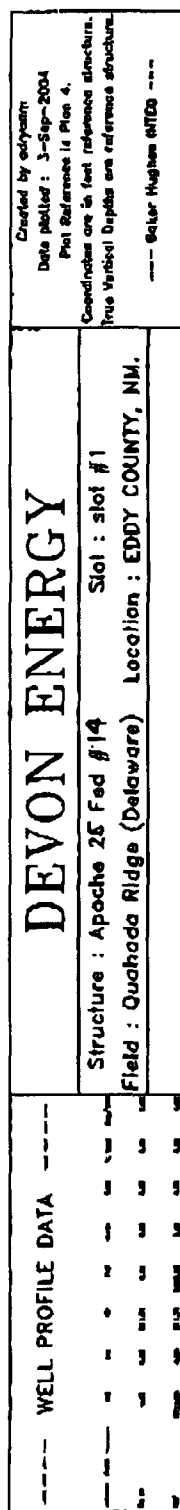
devon

Eddy County, NM
Lower Brushy Canyon D net sand map
With proposed Apache 25 Fed 14

Author:
D O'Bright

Date:
9 December, 2004

Scale:
<scale>



Vertical Section (feet) ->

Azimutl 281.31 with reference 0.00 N, 0.00 E from structure

TRANSACTION REPORT

P. 01

DEC-09-2004 THU 12:51 PM

FOR:

RECEIVE

| DATE | START | SENDER | RX TIME | PAGES | TYPE | NOTE | M# | DP |
|--------|----------|--------|---------|-------|---------|------|----|----|
| DEC-09 | 12:49 PM | | 1' 17" | 6 | RECEIVE | OK | | |



Devon Energy Corporation
20 North Broadway
Oklahoma City, Oklahoma 73102-8260
Fax 405-552-8113

December 9, 2004

RECEIVED

DEC 17 2004

New Mexico Oil Conservation Division
1220 South St. Francis Drive
Santa Fe, NM 87505
Attn: Michael Stogner

Oil Conservation Division
1220 S. Saint Francis Drive
Santa Fe, NM 87505

RE: Apache 25 Federal #14
Section 25-T22S-R30E
Eddy County, New Mexico

Gentlemen:

Devon Energy Production Company, L.P. ("Devon"), as Operator, intends to drill the referenced horizontal Delaware well to a total vertical depth of 7,643' with a total measured depth of 11,776'. As reflected on the attached C-102, the well has been permitted at a surface location of 1254' FNL and 330' FEL with a permitted bottom hole location of 330' FNL and 330' FWL of Section 25. The initial portion of the open hole (and potentially productive) horizontal section of the well will be located 1,261.55' FEL and 1,067.69' FNL which is an unorthodox location.

Inasmuch as the initial portion of the open hole horizontal section of the referenced well is located at an unorthodox location from that permitted by the Statewide Pool Rules, Devon respectfully requests that the Commission administratively approve this application for an unorthodox location in accordance with Division Rule 104(F)(3). This unorthodox location affects the leasehold owner in Unit letters B, G, & H. Devon is the owner of 100% Record Title of Federal Lease NM 89052 which covers Unit letters B, G & H, among other lands. Therefore, no additional notification of this application should be required, as this unorthodox location will affect Devon leasehold only.

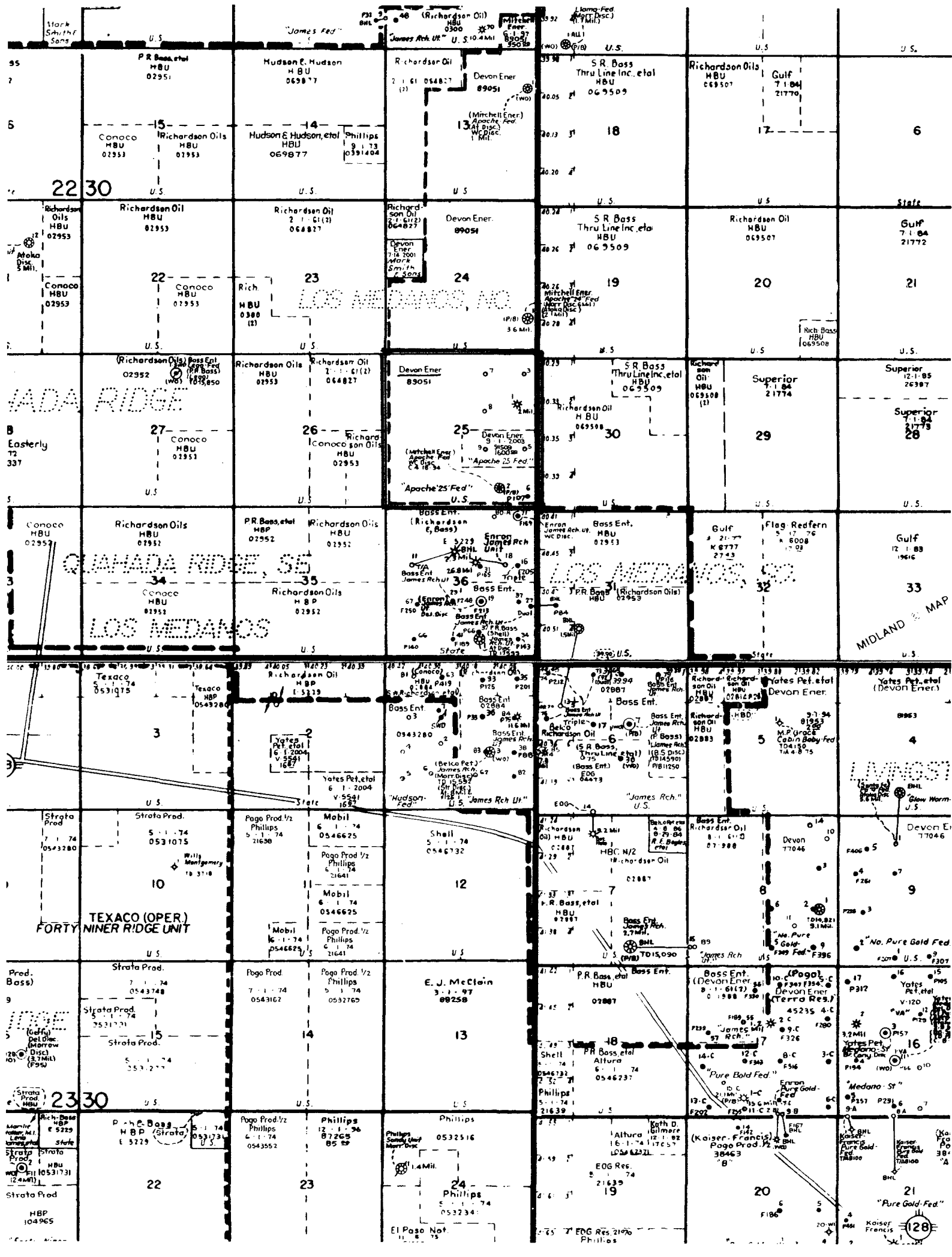
Attached for your review you will find a land plat reflecting Devon as the only affected party, a net sand isopach covering the Lower Brushy Canyon D sand, a State of New Mexico form C-102, and a Well Profile plat prepared by Baker Hughes.

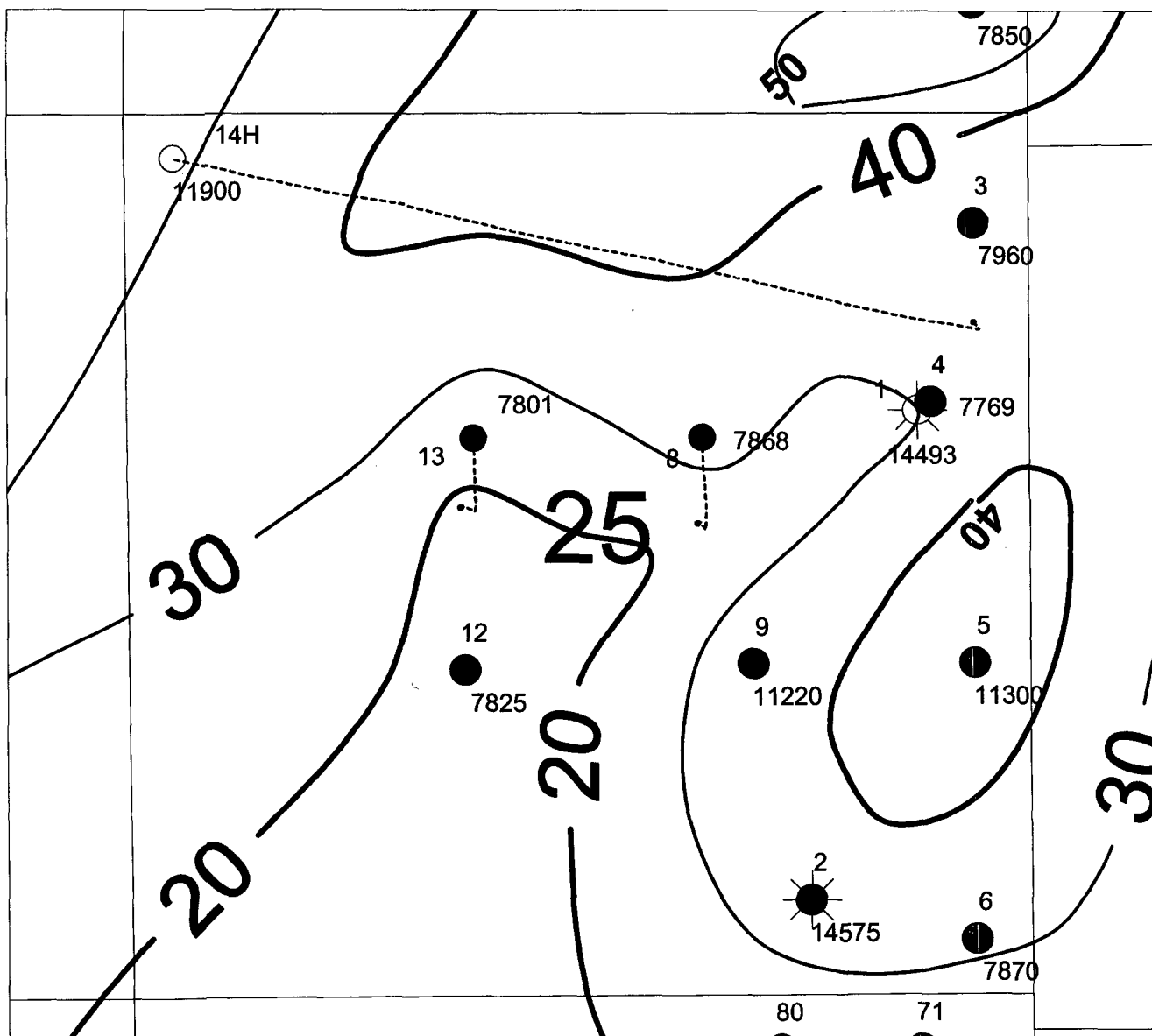
Feel free to contact the undersigned at (405) 552-4633 if there are any concerns or questions regarding this application.

Yours very truly,

DEVON ENERGY PRODUCTION COMPANY, L.P.

Ken Gray
Senior Land Advisor
KG\Apache 25-14 UL
Enclosure





devon

Eddy County, NM
Lower Brushy Canyon D net sand map
With proposed Apache 25 Fed 14

Author:
D O'Bright

Date:
9 December, 2004

Scale:
<scale>

DEVON ENERGY

Date plotted : 3-Sep-2004

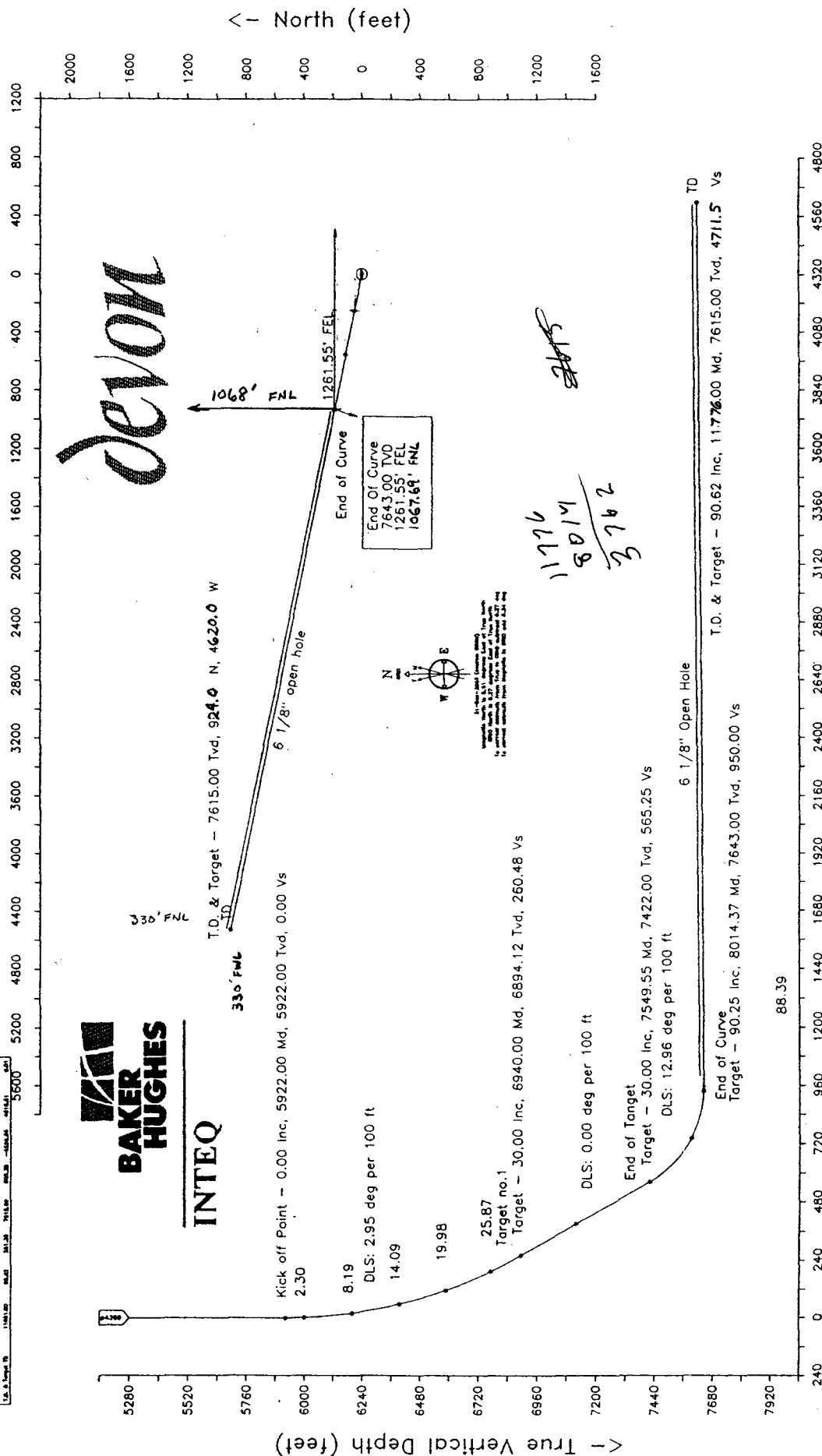
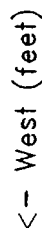
Plot Reference is Plan 4.

Coordinates are in feet reference structure.
True Vertical Depths are reference structure.

----- Baker Hughes INTEQ -----

Structure : Apache 25 Fed #14 Slot : slot #1
Field : Quahada Ridge (Delaware) Location : EDDY COUNTY, NM.

| Year | 1970 | 1971 | 1972 | 1973 | 1974 | 1975 | 1976 | 1977 | 1978 | 1979 | 1980 | 1981 | 1982 | 1983 | 1984 | 1985 | 1986 | 1987 | 1988 | 1989 | 1990 | 1991 | 1992 | 1993 | 1994 | 1995 | 1996 | 1997 | 1998 | 1999 | 2000 | 2001 | 2002 | 2003 | 2004 | 2005 | 2006 | 2007 | 2008 | 2009 | 2010 | 2011 | 2012 | 2013 | 2014 | 2015 | 2016 | 2017 | 2018 | 2019 | 2020 | 2021 | 2022 | 2023 | 2024 | 2025 | 2026 | 2027 | 2028 | 2029 | 2030 | 2031 | 2032 | 2033 | 2034 | 2035 | 2036 | 2037 | 2038 | 2039 | 2040 | 2041 | 2042 | 2043 | 2044 | 2045 | 2046 | 2047 | 2048 | 2049 | 2050 | 2051 | 2052 | 2053 | 2054 | 2055 | 2056 | 2057 | 2058 | 2059 | 2060 | 2061 | 2062 | 2063 | 2064 | 2065 | 2066 | 2067 | 2068 | 2069 | 2070 | 2071 | 2072 | 2073 | 2074 | 2075 | 2076 | 2077 | 2078 | 2079 | 2080 | 2081 | 2082 | 2083 | 2084 | 2085 | 2086 | 2087 | 2088 | 2089 | 2090 | 2091 | 2092 | 2093 | 2094 | 2095 | 2096 | 2097 | 2098 | 2099 | 2100 |
|------|------|------|------|------|------|------|------|------|------|------|------|------|------|------|------|------|------|------|------|------|------|------|------|------|------|------|------|------|------|------|------|------|------|------|------|------|------|------|------|------|------|------|------|------|------|------|------|------|------|------|------|------|------|------|------|------|------|------|------|------|------|------|------|------|------|------|------|------|------|------|------|------|------|------|------|------|------|------|------|------|------|------|------|------|------|------|------|------|------|------|------|------|------|------|------|------|------|------|------|------|------|------|------|------|------|------|------|------|------|------|------|------|------|------|------|------|------|------|------|------|------|------|------|------|------|------|------|------|------|------|------|
| 1970 | 1970 | 1971 | 1972 | 1973 | 1974 | 1975 | 1976 | 1977 | 1978 | 1979 | 1980 | 1981 | 1982 | 1983 | 1984 | 1985 | 1986 | 1987 | 1988 | 1989 | 1990 | 1991 | 1992 | 1993 | 1994 | 1995 | 1996 | 1997 | 1998 | 1999 | 2000 | 2001 | 2002 | 2003 | 2004 | 2005 | 2006 | 2007 | 2008 | 2009 | 2010 | 2011 | 2012 | 2013 | 2014 | 2015 | 2016 | 2017 | 2018 | 2019 | 2020 | 2021 | 2022 | 2023 | 2024 | 2025 | 2026 | 2027 | 2028 | 2029 | 2030 | 2031 | 2032 | 2033 | 2034 | 2035 | 2036 | 2037 | 2038 | 2039 | 2040 | 2041 | 2042 | 2043 | 2044 | 2045 | 2046 | 2047 | 2048 | 2049 | 2050 | 2051 | 2052 | 2053 | 2054 | 2055 | 2056 | 2057 | 2058 | 2059 | 2060 | 2061 | 2062 | 2063 | 2064 | 2065 | 2066 | 2067 | 2068 | 2069 | 2070 | 2071 | 2072 | 2073 | 2074 | 2075 | 2076 | 2077 | 2078 | 2079 | 2080 | 2081 | 2082 | 2083 | 2084 | 2085 | 2086 | 2087 | 2088 | 2089 | 2090 | 2091 | 2092 | 2093 | 2094 | 2095 | 2096 | 2097 | 2098 | 2099 | 2100 |



Vertical Section (feet) - >

Azimuth 281.31 with reference 0.00 N, 0.00 E from structure

DISTRICT I
1625 N. French Dr., Hobbs, NM 88240

DISTRICT II
811 South First, Artesia, NM 88210

DISTRICT III
1000 Rio Brazos Rd., Artesia, NM 87410

DISTRICT IV
2040 South Pacheco, Santa Fe, NM 87505

State of New Mexico
Energy, Minerals and Natural Resources Department

Form C-102
Revised March 17, 1999

Submit to Appropriate District Office
State Lease - 4 Copies
Fee Lease - 3 Copies

OIL CONSERVATION DIVISION

2040 South Pacheco
Santa Fe, New Mexico 87504-2088

☐ AMENDED REPORT

WELL LOCATION AND ACREAGE DEDICATION PLAT

| | | |
|-------------------|----------------------------------------------------|--------------------|
| API Number | Pool Code | Pool Name |
| Property Code | Property Name APACHE "25" FEDERAL | Well Number 14 |
| OGRED No. 6137 | Operator Name DEVON ENERGY PRODUCTION CO., L.P. | Elevation 3370' |

Surface Location

| UL or lot No. | Section | Township | Range | Lot Idn | Feet from the | North/South line | Feet from the | East/West line | County |
|---------------|---------|----------|-------|---------|---------------|------------------|---------------|----------------|--------|
| A | 25 | 22 S | 30 E | | 1254 | NORTH | 330 | EAST | EDDY |

Bottom Hole Location If Different From Surface

| UL or lot No. | Section | Township | Range | Lot Idn | Feet from the | North/South line | Feet from the | East/West line | County |
|-----------------------|-----------------|--------------------|-----------|---------|---------------|------------------|---------------|----------------|--------|
| D | 25 | 22 S | 30 E | | 330 | FNL | 330 | FWL | Eddy |
| Dedicated Acres 40 | Joint or Infill | Consolidation Code | Order No. | | | | | | |

NO ALLOWABLE WILL BE ASSIGNED TO THIS COMPLETION UNTIL ALL INTERESTS HAVE BEEN CONSOLIDATED
OR A NON-STANDARD UNIT HAS BEEN APPROVED BY THE DIVISION

| | |
|---------------------------------------------------------|------------------------------------------------------------------------------------------------------------------------------------------------------------------------------------------------------------------------------------------------------------------------------------------|
| <p>OH SECTION STARTS AT 1261 FEL + 1068 FNL</p> | OPERATOR CERTIFICATION I hereby certify the the information contained herein is true and complete to the best of my knowledge and belief. Signature Linda Guthrie Printed Name Regulatory Specialist Title 07/23/04 Date |
| | SURVEYOR CERTIFICATION I hereby certify that the well location shown on this plat was plotted from field notes of actual surveys made by me or under my supervision, and that the same is true and correct to the best of my belief. JULY 2, 2004' Date Surveyed |
| | Signature & Seal of Professional Surveyor |
| | W.O. No. 4428 Certificate No. Gary L. Jones 7977 BASS SURVEYS |