

ABOVE THIS LINE FOR DIVISION USE ONLY

NEW MEXICO OIL CONSERVATION DIVISION

- Engineering Bureau -

1220 South St. Francis Drive, Santa Fe, NM 87505



ADMINISTRATIVE APPLICATION CHECKLIST

THIS CHECKLIST IS MANDATORY FOR ALL ADMINISTRATIVE APPLICATIONS FOR EXCEPTIONS TO DIVISION RULES AND REGULATIONS WHICH REQUIRE PROCESSING AT THE DIVISION LEVEL IN SANTA FE

Application Acronyms:

[NSL-Non-Standard Location] [NSP-Non-Standard Proration Unit] [SD-Simultaneous Dedication]
 [DHC-Downhole Commingling] [CTB-Lease Commingling] [PLC-Pool/Lease Commingling]
 [PC-Pool Commingling] [OLS - Off-Lease Storage] [OLM-Off-Lease Measurement]
 [WFX-Waterflood Expansion] [PMX-Pressure Maintenance Expansion]
 [SWD-Salt Water Disposal] [IPI-Injection Pressure Increase]
 [EOR-Qualified Enhanced Oil Recovery Certification] [PPR-Positive Production Response]

[1] TYPE OF APPLICATION - Check Those Which Apply for [A]

[A] Location - Spacing Unit - Simultaneous Dedication
☒ NSL ☐ NSP ☐ SD

Check One Only for [B] or [C]

[B] Commingling - Storage - Measurement
☐ DHC ☐ CTB ☐ PLC ☐ PC ☐ OLS ☐ OLM

[C] Injection - Disposal - Pressure Increase - Enhanced Oil Recovery
☐ WFX ☐ PMX ☐ SWD ☐ IPI ☐ EOR ☐ PPR

[D] Other: Specify _____

[2] NOTIFICATION REQUIRED TO: - Check Those Which Apply, or ☒ Does Not Apply

[A] ☐ Working, Royalty or Overriding Royalty Interest Owners

[B] ☐ Offset Operators, Leaseholders or Surface Owner

[C] ☐ Application is One Which Requires Published Legal Notice

[D] ☐ Notification and/or Concurrent Approval by BLM or SLO
 U.S. Bureau of Land Management - Commissioner of Public Lands, State Land Office

[E] ☐ For all of the above, Proof of Notification or Publication is Attached, and/or,

[F] ☐ Waivers are Attached

[3] SUBMIT ACCURATE AND COMPLETE INFORMATION REQUIRED TO PROCESS THE TYPE OF APPLICATION INDICATED ABOVE.

[4] **CERTIFICATION:** I hereby certify that the information submitted with this application for administrative approval is **accurate** and **complete** to the best of my knowledge. I also understand that **no action** will be taken on this application until the required information and notifications are submitted to the Division.

Note: Statement must be completed by an individual with managerial and/or supervisory capacity.

David Catanach
 Print or Type Name

David Catanach
 Signature

9/30/14
 Date

Agent for Apache Corporation
 Title

drcatanach@netscape.com
 E-Mail Address

- NSL 7163
 - Apache Corporation
 873
 well
 - Coffey Federal
 #21
 30-015-40961
 Pool
 - Cedar Lake
 Glorieta - yes
 96831

September 30, 2014

Hand Delivered

New Mexico Oil Conservation Division
1220 S. St. Francis Drive
Santa Fe, New Mexico 87505

Attention: Ms. Jami Bailey, CPG
Division Director

Re: Application for Unorthodox Well Location
Coffee Federal No. 21
API No. (30-015-40961)
2120' FNL & 2565' FEL (Unit G)
Section 18, T-17 South, R-31 East, NMPM,
Eddy County, New Mexico

Dear Ms. Bailey:

Pursuant to Division Rule 19.15.15.13, Apache Corporation ("Apache") respectfully requests administrative approval of an unorthodox oil well location for its proposed Coffee Federal No. 21. This well will be drilled as a development oil well in the Cedar Lake Glorieta-Yeso Pool (96831).

The proposed Coffee Federal No. 21 will be dedicated to an existing standard 40-acre oil spacing and proration unit in the Cedar Lake Glorieta-Yeso Pool comprising the SW/4 NE/4 of Section 18. This unit is currently dedicated to Apache's: i) existing Coffee Federal No. 3 (API No. 30-015-31252) located at a standard well location 2285 feet from the North line and 1800 feet from the East line; ii) existing Coffee Federal No. 4 (API No. 30-015-31593) located at a standard well location 1650 feet from the North line and 2235 feet from the East line; and iii) proposed Coffee Federal No. 16 (API No. 30-015-40960) located at an unorthodox well location 1535 feet from the North line and 1655 feet from the East line.

The Cedar Lake Glorieta-Yeso Pool is currently governed by Division Rule 19.19.15.9 which requires standard 40-acre oil spacing and proration units with wells to be located no closer than 330 feet to the outer boundary of the spacing unit.

The proposed unorthodox location is necessary in order to avoid large sand dunes and non-owned existing pipelines.

The affected offset tract is the SE/4 NW/4 of Section 18. This affected offset 40-acre tract is currently being developed in the Cedar Lake Glorieta-Yeso Pool by

numerous wells operated by Apache. Please note that the working interest ownership between the SE/4 NW/4 and the SW/4 NE/4 is common. Consequently, notice of this application is not required to any party.

Attached is a Form C-102 showing the proposed well, spacing unit, other existing wells in the spacing unit and the affected offset acreage. Also attached is a vicinity map.

In summary, approval of the application will provide Apache Corporation the opportunity to recover additional oil and gas reserves from the Cedar Lake Glorieta-Yeso Pool underlying the SW/4 NE/4 of Section 18 that may otherwise not be recovered by the existing wells, thereby preventing waste, and will not violate correlative rights.

If you should have any questions, please call me at (505) 690-9453.

Sincerely,



David Catanach, Agent
Apache Corporation
303 Veterans Airpark Lane
Suite 3000
Midland, Texas 79705

Xc: OCD-Artesia

District I
1625 N. French Dr., Hobbs, NM 88240
District II
1301 W. Grand Avenue, Artesia, NM 88210
District III
1000 Rio Brazos Rd., Aztec, NM 87410
District IV
1220 S. St. Francis Dr., Santa Fe, NM 87505

State of New Mexico
Energy, Minerals & Natural Resources Department
OIL CONSERVATION DIVISION
1220 South St. Francis Dr.
Santa Fe, NM 87505

Form C-102
Revised July 16, 2010
Submit one copy to appropriate
District Office
☐ AMENDED REPORT

WELL LOCATION AND ACREAGE DEDICATION PLAT

| | | |
|-----------------------------------|--|---|
| API Number 30-015-40961 | Pool Code 96831 | Pool Name Cedar Lake Glorieta-Yeso Pool |
| Property Code 308710 | Property Name Coffee Federal | Well Number 21 |
| OGRID No. 873 | Operator Name Apache Corporation | Elevation 3744' |

Surface Location

| | | | | | | | | | |
|---------------------------|----------------------|-----------------------------|-------------------------|---------|------------------------------|----------------------------------|------------------------------|-------------------------------|-----------------------|
| UL or lot no. G | Section 18 | Township 17 South | Range 31 East | Lot Idn | Feet from the 2120 | North/South line North | Feet from the 2565 | East/West line East | County Eddy |
|---------------------------|----------------------|-----------------------------|-------------------------|---------|------------------------------|----------------------------------|------------------------------|-------------------------------|-----------------------|

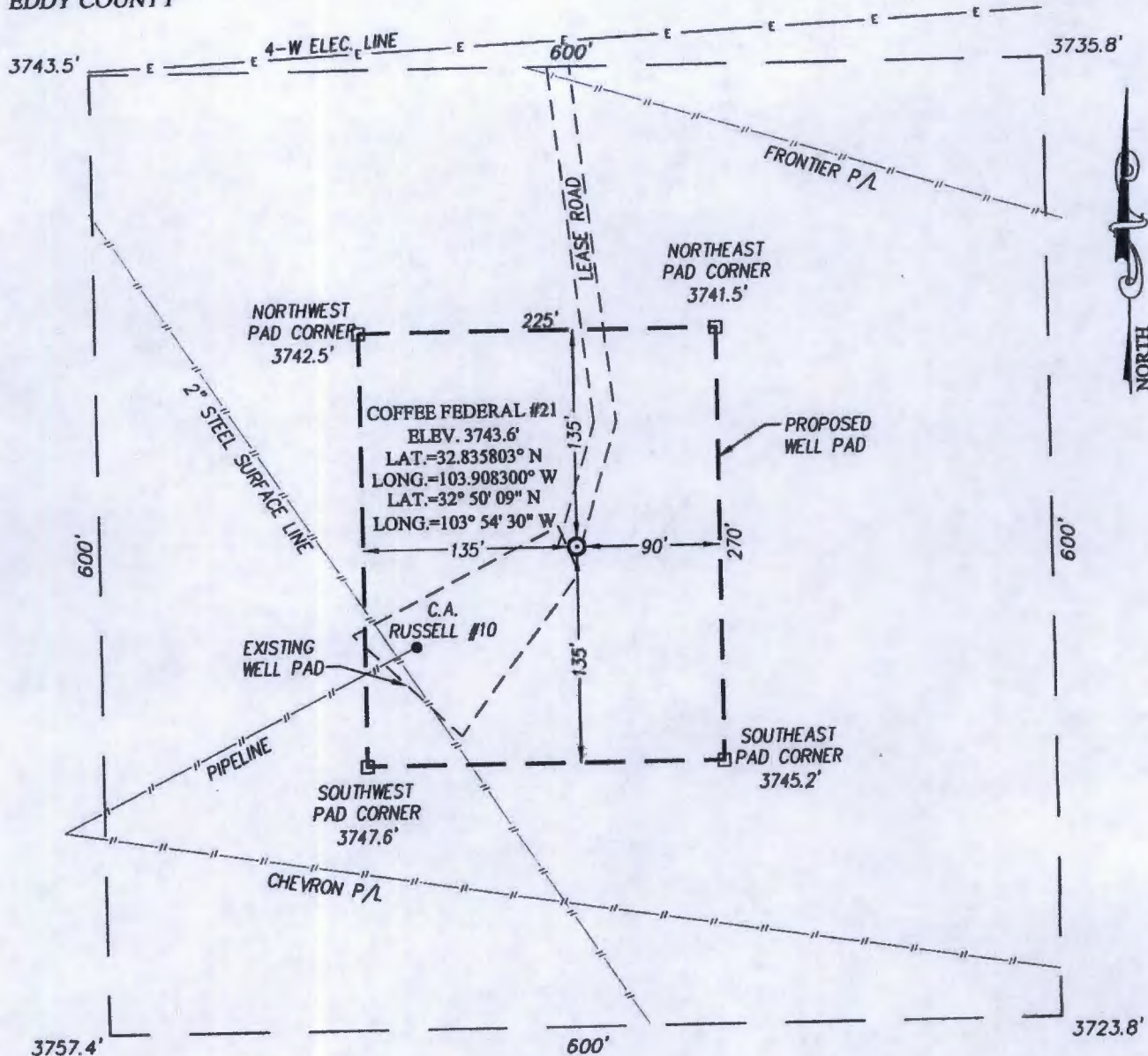
Bottom Hole Location If Different From Surface

| | | | | | | | | | |
|------------------------------|-----------------|------------------|-----------|---------|---------------|------------------|---------------|----------------|--------|
| UL or lot no. | Section | Township | Range | Lot Idn | Feet from the | North/South line | Feet from the | East/West line | County |
| Dedicated Acres 40 | Joint or Infill | Consolidate Code | Order No. | | | | | | |

No Allowable will be assigned to this completion until all interests have been consolidated or a non-standard unit has been approved by the Division

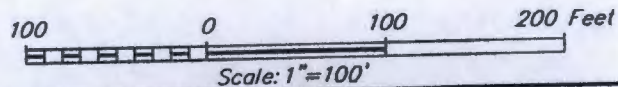
| | | | | |
|-----------------------|---|---|--|---|
| Lot 1: 31.99 Acres | | | | <p>OPERATOR CERTIFICATION</p> <p><i>I hereby certify that the information contained herein is true and complete to the best of my knowledge and belief, and that this organization either owns a working interest or unleased mineral interest in the land including the proposed bottomhole location or has a right to drill this well at this location pursuant to a contract with an owner of such a mineral or working interest, or to a voluntary pooling agreement or a compulsory pooling order heretofore entered by the Division.</i></p> <p>Signature _____ Date _____</p> <p>Printed Name _____</p> <p>E-mail Address _____</p> |
| Lot 2 32.10 Acres | <p>Affected Offset Tract Operator: Apache WI Ownership Common w/Drill Tract</p> | <p>2120'</p> <p>Coffee Federal 4 (Existing)</p> <p>Coffee Federal 16 (Existing)</p> <p>Coffee Federal 21 (Subject Well)</p> <p>Coffee Federal 3 (Existing)</p> <p>2565'</p> | | |
| Lot 3 32.20 Acres | | | | |
| Lot 4 32.31 Acres | | | | |
| | | | | <p>SURVEYOR CERTIFICATION</p> <p><i>I hereby certify that the well location shown on this plat was plotted from field notes of actual surveys made by me or under my supervision, and that the same is true and correct to the best of my belief.</i></p> <p>Date of Survey _____</p> <p>Signature and Seal of Professional Surveyor: _____</p> <p>Certificate Number _____</p> |

SECTION 18, TOWNSHIP 17 SOUTH, RANGE 31 EAST, N.M.P.M.
EDDY COUNTY NEW MEXICO



DIRECTIONS TO LOCATION

FROM THE INTERSECTION OF U.S. HWY. #82 AND CO. RD. #221 (SKELLY RD.) AND GO NORTH ON CO. RD. #221 APPROX. 1.3 MILES. TURN RIGHT AND GO EAST APPROX. 0.45 MILES. TURN RIGHT AND GO SOUTH APPROX. 0.1 MILES TO THE LOCATION.



APACHE CORPORATION

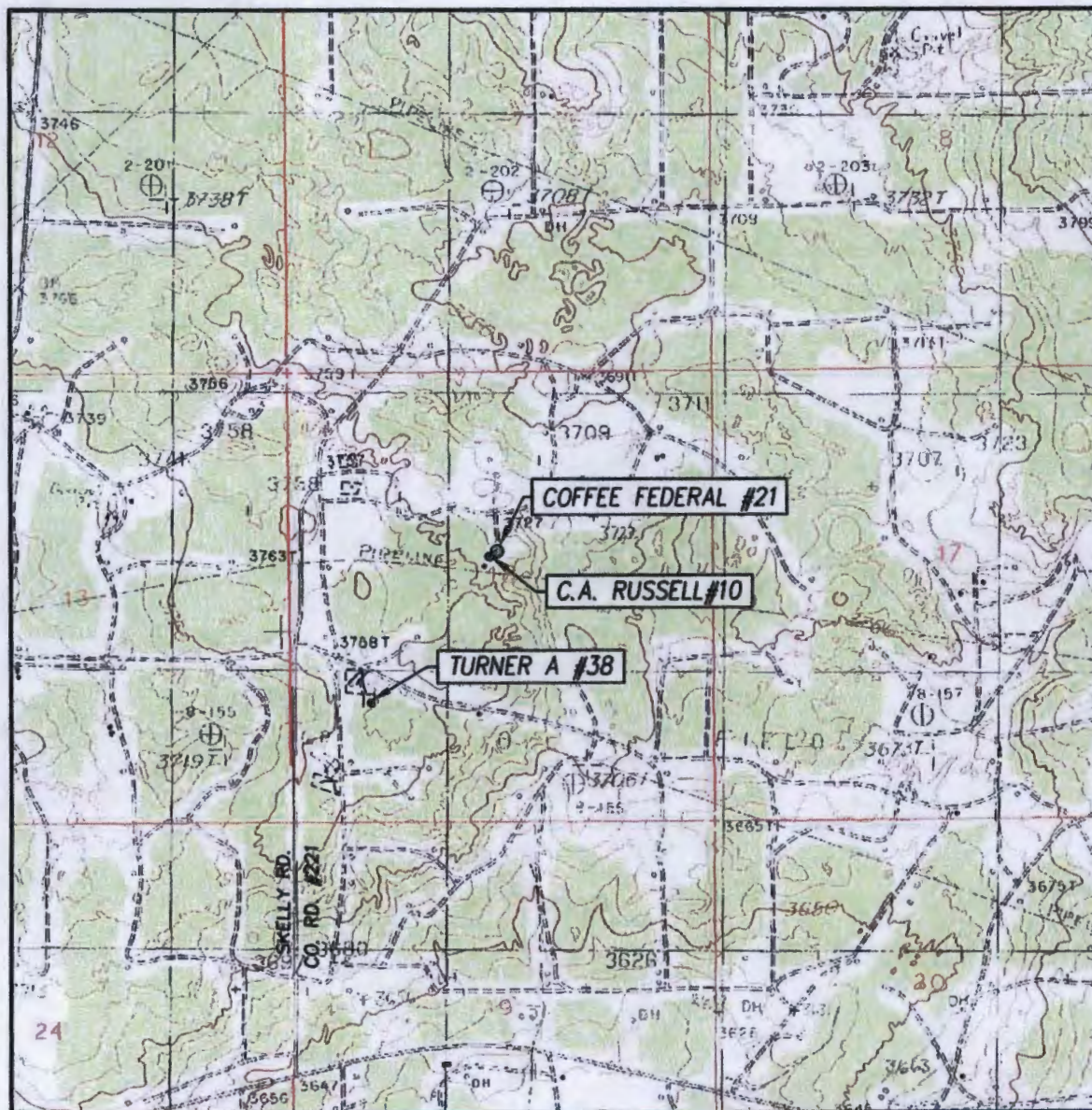
COFFEE FEDERAL #21 WELL
 LOCATED 2120 FEET FROM THE NORTH LINE
 AND 2565 FEET FROM THE EAST LINE OF SECTION 18,
 TOWNSHIP 17 SOUTH, RANGE 31 EAST, N.M.P.M.,
 EDDY COUNTY, NEW MEXICO

PROVIDING SURVEYING SERVICES
 SINCE 1946
JOHN WEST SURVEYING COMPANY
 412 N. DAL PASO
 HOBBS, N.M. 88240
 (575) 393-3117 www.jwsc.biz

| | | |
|---------------------|-------------------|--------------|
| Survey Date: 6/1/12 | CAD Date: 6/16/12 | Drawn By: AF |
| W.O. No.: 12110589 | Rev. : | Rel. W.O.: |

Sheet 1 of 1

LOCATION VERIFICATION MAP



SCALE: 1" = 2000'

CONTOUR INTERVAL:
LOCO HILLS, N.M. - 10'

SEC. 18 TWP. 17-S RGE. 31-E

SURVEY N.M.P.M.

COUNTY EDDY STATE NEW MEXICO

DESCRIPTION 2120' FNL & 2565' FEL

ELEVATION 3744'

OPERATOR APACHE CORPORATION

LEASE COFFEE FEDERAL

U.S.G.S. TOPOGRAPHIC MAP

LOCO HILLS, N.M.

