



P.O. Box 960
Artesia, NM 88211-0960
Office (575) 748-1288
Fax (575) 746-9539

April 16, 2018

*Oil Conservation Division
Attn: Michael A. McMillan
1220 S. St. Francis Drive
Santa Fe, NM 87505*

Re: Application of Mack Energy Corporation for administrative approval for off-lease measurement and approval to surface commingle (lease commingle) gas production in a gathering system from the lands listed in Exhibit 3. Various sections and leases in Township 15S Range 28E and Township 15S Range 29E, NMPM, Chaves County, New Mexico.

Dear Sir:

Mack Energy Corporation (OGRID 013837) seeks administrative approval for off-lease measurement and approval to surface commingle gas production from the Round Tank; San Andres Pool (Pool Code 52770) from all existing and future wells and leases drilled within the mentioned areas of diverse ownership in T15S R28E and T15S R29E.

Pursuant to NMAC 19.15.12.7, approved spacing units with diverse ownership are considered separate leases for surface commingling purposes. Mack Energy is requesting approval to surface commingle production according to the provisions of NMAC 19.15.12.10.C from all existing and future wells in these separate areas of diverse ownership at central sales point in Sec. 4 T16S R29E. Pursuant to 19.15.12.10(C)(4)(g), Mack Energy requests authority to produce future leases with notice provided to only the interest owners of the future leases. Each lease involved has its own allocation and test meter for allocation purposes. Oil and Gas production at each CTB facility will be measured using test meters and 7 day test cycles.

Exhibit 1 is a land map showing Mack's current development and gathering system in the subject area.

Exhibit 2 is a completed Application for Surface Commingling (Diverse Ownership) and Off-Lease Measurement Form C107B.

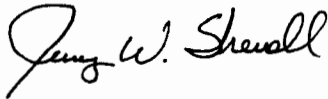
Exhibit 3 is a list of all lands associated with this commingling application.

Exhibit 4 is a C-102 for each well both existing and proposed within the project area.

Exhibit 5 is a list of the interests affected by this request for approval to off-lease measure and surface commingle gas production, within our gathering system. A copy of this application with all attachments has been sent by certified mail to all affected parties advising them that if they have an objection they must file it in writing with the division within 20 of the date the division receives Mack's application.

Your attention to this matter is greatly appreciated.

Sincerely,

A handwritten signature in black ink that reads "Jerry W. Sherrell". The signature is written in a cursive style with a large, stylized "J" and "S".

Jerry W. Sherrell
Production Clerk
jerrys@mec.com

JWS/

Enclosures

District I
1625 N. French Drive, Hobbs, NM 88240
District II
811 S. First St., Artesia, NM 88210
District III
1000 Rio Brazos Road, Aztec, NM 87410
District IV
1220 S. St Francis Dr, Santa Fe, NM
87505

State of New Mexico
Energy, Minerals and Natural Resources Department

Form C-107-B
Revised August 1, 2011

OIL CONSERVATION DIVISION
1220 S. St Francis Drive
Santa Fe, New Mexico 87505

Submit the original
application to the Santa Fe
office with one copy to the
appropriate District Office.

APPLICATION FOR SURFACE COMMINGLING (DIVERSE OWNERSHIP)

OPERATOR NAME: MACK ENERGY CORPORATION

OPERATOR ADDRESS: PO BOX 960 ARTESIA, NM 88211-0960

APPLICATION TYPE:

☐ Pool Commingling ☒ Lease Commingling ☐ Pool and Lease Commingling ☐ Off-Lease Storage and Measurement (Only if not Surface Commingled)

LEASE TYPE: ☐ Fee ☒ State ☒ Federal

Is this an Amendment to existing Order? ☐ Yes ☒ No If "Yes", please include the appropriate Order No. _____

Have the Bureau of Land Management (BLM) and State Land office (SLO) been notified in writing of the proposed commingling

☒ Yes ☐ No

(A) POOL COMMINGLING

Please attach sheets with the following information

(1) Pool Names and Codes	Gravities / BTU of Non-Commingled Production	Calculated Gravities / BTU of Commingled Production		Calculated Value of Commingled Production	Volumes

(2) Are any wells producing at top allowables? ☐ Yes ☐ No

(3) Has all interest owners been notified by certified mail of the proposed commingling? ☐ Yes ☐ No.

(4) Measurement type: ☐ Metering ☐ Other (Specify)

(5) Will commingling decrease the value of production? ☐ Yes ☐ No If "yes", describe why commingling should be approved

(B) LEASE COMMINGLING

Please attach sheets with the following information

(1) Pool Name and Code. ROUND TANK; SAN ANDRES (52770)

(2) Is all production from same source of supply? ☒ Yes ☐ No

(3) Has all interest owners been notified by certified mail of the proposed commingling? ☒ Yes ☐ No

(4) Measurement type: ☐ Metering ☒ Other (Specify)

(C) POOL and LEASE COMMINGLING

Please attach sheets with the following information

(1) Complete Sections A and E.

(D) OFF-LEASE STORAGE and MEASUREMENT

Please attach sheets with the following information

(1) Is all production from same source of supply? ☐ Yes ☐ No

(2) Include proof of notice to all interest owners.

(E) ADDITIONAL INFORMATION (for all application types)

Please attach sheets with the following information

(1) A schematic diagram of facility, including legal location.

(2) A plat with lease boundaries showing all well and facility locations. Include lease numbers if Federal or State lands are involved.

(3) Lease Names, Lease and Well Numbers, and API Numbers.

I hereby certify that the information above is true and complete to the best of my knowledge and belief.

SIGNATURE: Jerry W. Sherrell

TITLE: PRODUCTION CLERK

DATE: 4/16/2018

TYPE OR PRINT NAME Jerry W. Sherrell

TELEPHONE NO.: 575-748-1288

E-MAIL ADDRESS: jerrys@mec.com

Entity Name	Map County	State	Map Description	Unit	Sec.	Twmsp	Rng	Lat	Long
Blue Bomber Federal #1	Chaves	NM	2310 FSL 1650 FEL	J	7	15S	29E		
Blue Bomber Federal TB	Chaves	NM	2310 FSL 1650 FEL	J	7	15S	29E	33.02949	-104.06384
Calgary Federal #1	Chaves	NM	330 FSL 990 FEL	P	24	15S	28E		
Calgary Federal #2	Chaves	NM	1650 FSL 990 FEL	I	24	15S	28E		
Calgary Federal #5	Chaves	NM	2310 FNL 890 FEL	H	24	15S	28E		
Calgary Federal #6	Chaves	NM	2310 FNL 1945 FEL	G	24	15S	28E		
Calgary Federal #7	Chaves	NM	2310 FNL 1600 FWL	F	24	15S	28E		
Calgary Federal TB	Chaves	NM	990 FNL 330 FEL	A	25	15S	28E	32.991289	-104.077209
Eskimo State #1	Chaves	NM	330 FSL 1650 FWL	N	19	15S	29E		
Eskimo State #2	Chaves	NM	1650 FSL 1650 FWL	K	19	15S	29E		
Eskimo State #3	Chaves	NM	505 FNL 2310 FWL	C	30	15S	29E		
Eskimo State #4	Chaves	NM	1675 FNL 2310 FWL	F	30	15S	29E		
Eskimo State #5	Chaves	NM	2285 FSL 2310 FWL	K	30	15S	29E		
Eskimo State #6	Chaves	NM	965 FSL 2310 FWL	N	30	15S	29E		
Eskimo State #7	Chaves	NM	965 FNL 330 FWL	D	30	15S	29E		
Eskimo State #8	Chaves	NM	2285 FNL 465 FWL	E	30	15S	29E		
Eskimo State #9	Chaves	NM	1650 FSL 300 FWL	L	30	15S	29E		
Eskimo State #10	Chaves	NM	990 FSL 990 FWL	M	30	15S	29E		
Eskimo State TB	Chaves	NM	330 FSL 1650 FWL	N	19	15S	29E	32.9949168	-104.0708215
Klondike State Com	Chaves	NM	700 FSL 2285 FEL	O	23	15S	28E		
Medicine Hat State Com #1H	Chaves	NM	200 FSL 900 FWL	M	35	15S	28E		
Medicine Hat State Com #2H	Chaves	NM	500 FNL 2285 FWL	C	35	15S	28E		
Markham State Com #1H	Chaves	NM	330 FSL 990 FEL	P	23	15S	28E		
Klondike CTB	Chaves	NM	700 FSL 2285 FEL	O	23	15S	28E	32.9961778	-104.1013408
Packers Federal #1	Chaves	NM	1675 FNL 330 FEL	H	29	15S	29E		
Packers Federal TB	Chaves	NM	1675 FNL 330 FEL	H	29	15S	29E	32.98931	-104.04282
Prince Rupert Federal #1	Chaves	NM	1900 FSL 330 FWL	L	20	15S	29E		
Prince Rupert Federal #2	Chaves	NM	1650 FSL 1650 FWL	K	20	15S	29E		
Prince Rupert Federal #3H	Chaves	NM	330 FSL 2160 FEL	O	17	15S	29E		
Montreal Federal Com #1H	Chaves	NM	530 FSL 990 FEL	P	17	15S	29E		
Chilliwack Federal Com #1H	Chaves	NM	810 FSL 965 FWL	M	17	15S	29E		
Ottawa Federal Com #1H	Chaves	NM	660 FSL 355 FWL	M	20	15S	29E		
Windsor Federal Com #1H	Chaves	NM	660 FSL 1675 FWL	N	20	15S	29E		
Prince Rupert Federal TB	Chaves	NM	1900 FSL 330 FWL	L	20	15S	29E	32.9987124	-104.0581481
Seahawks Federal #1	Chaves	NM	1650 FSL 2310 FEL	J	19	15S	29E		
Seahawks Federal #2	Chaves	NM	1588 FSL 859 REL	I	19	15S	29E		
Seahawks Federal	Chaves	NM	1650 FSL 2310 FEL	J	19	15S	29E	32.998537	-104.0663347
Snow Lake Federal Com #1	Chaves	NM	990 FNL 330 FEL	A	25	15S	28E		
Snow Lake Federal Com	Chaves	NM	990 FNL 330 FEL	A	25	15S	28E	32.991289	-104.077209
Victoria Federal #1Y	Chaves	NM	330 FSL 350 FWL	M	19	15S	29E		
Victoria Federal #2	Chaves	NM	1650 FSL 330 FWL	I	19	15S	29E		
Victoria Federal #4	Chaves	NM	2310 FNL 2310 FEL	G	30	15S	29E		
Victoria Federal #5	Chaves	NM	2285 FNL 230 FWL	E	19	15S	29E		

[illegible]

Land for CTB Gas Gathering System

T15S R28E

Sec. 22 All

Sec. 23 All

Sec. 24 SE/4, E/2SW, S/2NE, SENW, SWSW

Sec. 25 All but NWNW

Sec. 26 All

Sec. 35 All

Sec. 36 N/2, SE/4, S/2SW

T15S R29E

Sec. 7 All

Sec. 17 SWSW

Sec. 18 E/2

Sec. 19 NENE, S/2NW, SW/4, N/2SE

Sec. 20 All

Sec. 21 W/2

Sec. 22 W/2

Sec. 28 W/2, W/2NE, SE/4

Sec. 29 All

Sec. 30 All

Re: Application of Mack Energy Corporation for administrative approval for off-lease measurement and approval to surface commingle (lease commingle) gas production in a gathering system from the lands listed in Exhibit 3. Various sections and leases in Township 15S Range 28E and Township 15S Range 29E, NMPM, Chaves County, New Mexico.

List of Affected Parties

Sendero Energy LLC

Katz Resources LLC

M Squared Energy LLC

Chase Oil Corp

Robert C Chase

Broken Arrow Royalties LLC

Ventana Minerals LLC

DiaKan Minerals LLC

Mossman-Midwest Co.

Trustees of Dartmouth College

Bogle Ltd. Company

Rodney B. Webb

Sarah C. Webb

Hanson McBride Petroleum

Lampert Royalty Trust 2008

Abbie Moody Cliff (Address Unknown)

Rutter & Wilbanks Corp. (Address Unknown)

Donald E. Cooper (Address Unknown)

Armstrong Energy Corp.

Slash Exploration

Chimney Rock Oil & Gas

Bureau of Land Management

Commissioner of Public Lands

Legal Notice

To: Abbie Moody Cliff, Rutter & Wilbanks Corp., Donald E. Cooper and any unknown person who has mineral interests in Sections 22, 23, 24 SE/4, E/2SW, S/2NE, SENW, SWSW, 25 All but NWNW, 26, 35, 36 N/2, SE/4, S/2SW, Township 15 South, Range 28 East. Sections 7, 17 SWSW, 18 E/2, 19 NENE, S/2NW, SW/4, N/2SE, 20, 21 W/2, 22 W/2, 28 W/2, W/2NE, SE/4, 29, 30, Township 15 South, Range 29 East.

Application of Mack Energy Corporation for administrative approval for off-lease measurement and approval to surface commingle gas production from the Round Tank; San Andres Pool (Pool Code 52770) into a gas gathering system to be sold at a central sales point in Sec. 4 T16S R29E, from all existing and future wells and leases drilled within the above mentioned lands in Township 15S Range 28E and Township 15S Range 29E, NMPM, Chaves County, New Mexico. Pursuant to NMAC 19.15.12.7, approved spacing units with diverse ownership are considered separate leases for surface commingling purposes. Mack Energy is requesting approval to surface commingle production according to the provisions of NMAC 19.15.12.10.C from all existing and future wells. Pursuant to 19.15.12.10(C)(4)(g), Mack Energy requests authority to produce future leases with notice provided to only the interest owners of the future leases. Any objection to this application must be filed in writing within twenty days from this date at the Division's Santa Fe office located at 1220 South St. Francis Drive, Santa Fe, New Mexico, 87505. If no objection has been made within the 20 days period, this application may be approved administratively by the Division. If you have any questions about this application, please contact Jerry Sherrell, 11344 Lovington Hwy, PO Box 960, Artesia, NM 88211-0960, (575) 748-1288, jerrys@mec.com.



P.O. Box 960
Artesia, NM 88211-0960
Office (575) 748-1288
Fax (575) 746-9539

April 16, 2018

VIA CERTIFIED MAIL 7015 3430 0000 2217 3453

*Armstrong Energy Corporation
PO Box 1973
Roswell, NM 88202*

Dear Sir:

Mack Energy Corporation is requesting administrative approval from the NMOCD for approval of Off Lease Measurement/Surface Commingling of Gas production from multiple leases at a central sales meter located in Sec. 4 T16S R29E. The existing DCP gas line is no longer capable of handling production from this area. Mack Energy has installed a 10' gas pipeline to get Gas Production from this area to the sales point. All gas production will continue to be measured at the Tank Battery or Central Tank Battery using a Total Flow Meter.

Enclosed is a copy of this application which was filed with the New Mexico Oil Conservation Division on this date. Any objection to this application must be filed in writing within twenty days from this date at the Division's Santa Fe office located at 1220 South St. Francis Drive, Santa Fe, New Mexico, 87505. If no objection has been made within the 20 days period, this application may be approved administratively by the Division.

Should you have any questions please contact me @ 575-748-1288.

Sincerely,

A handwritten signature in cursive script that reads "Jerry W. Sherrell".

Jerry W. Sherrell
Production Clerk
jerrys@mec.com

JWS/

Enclosures



P.O. Box 960
Artesia, NM 88211-0960
Office (575) 748-1288
Fax (575) 746-9539

April 16, 2018

VIA CERTIFIED MAIL 7015 3430 0000 2217 3545

*Bureau of Land Management
2909 West 2nd Street
Roswell, NM 88202-2909*

Dear Sir:

Mack Energy Corporation is requesting administrative approval from the NMOCD for approval of Off Lease Measurement/Surface Commingling of Gas production from multiple leases at a central sales meter located in Sec. 4 T16S R29E. The existing DCP gas line is no longer capable of handling production from this area. Mack Energy has installed a 10' gas pipeline to get Gas Production from this area to the sales point. All gas production will continue to be measured at the Tank Battery or Central Tank Battery using a Total Flow Meter.

Enclosed is a copy of this application which was filed with the New Mexico Oil Conservation Division on this date. Any objection to this application must be filed in writing within twenty days from this date at the Division's Santa Fe office located at 1220 South St. Francis Drive, Santa Fe, New Mexico, 87505. If no objection has been made within the 20 days period, this application may be approved administratively by the Division.

Should you have any questions please contact me @ 575-748-1288.

Sincerely,

A handwritten signature in cursive script that reads "Jerry W. Sherrell".

Jerry W. Sherrell
Production Clerk
jerrys@mec.com

JWS/

Enclosures



P.O. Box 960
Artesia, NM 88211-0960
Office (575) 748-1288
Fax (575) 746-9539

April 16, 2018

VIA CERTIFIED MAIL 7015 3430 0000 2217 3477

*Chimney Rock Oil & Gas, LLC
PO Box 1973
Roswell, NM 88202*

Dear Sir:

Mack Energy Corporation is requesting administrative approval from the NMOCD for approval of Off Lease Measurement/Surface Commingling of Gas production from multiple leases at a central sales meter located in Sec. 4 T16S R29E. The existing DCP gas line is no longer capable of handling production from this area. Mack Energy has installed a 10' gas pipeline to get Gas Production from this area to the sales point. All gas production will continue to be measured at the Tank Battery or Central Tank Battery using a Total Flow Meter.

Enclosed is a copy of this application which was filed with the New Mexico Oil Conservation Division on this date. Any objection to this application must be filed in writing within twenty days from this date at the Division's Santa Fe office located at 1220 South St. Francis Drive, Santa Fe, New Mexico, 87505. If no objection has been made within the 20 days period, this application may be approved administratively by the Division.

Should you have any questions please contact me @ 575-748-1288.

Sincerely,

A handwritten signature in black ink that reads "Jerry W. Sherrell".

Jerry W. Sherrell
Production Clerk
jerrys@mec.com

JWS/

Enclosures



P.O. Box 960
Artesia, NM 88211-0960
Office (575) 748-1288
Fax (575) 746-9539

April 16, 2018

VIA CERTIFIED MAIL 7015 3430 0000 2217 3491

*Trustees of Dartmouth
Institutional Accounting
7 Lebanon Street, Suite 302
Hanover, NH 03755*

Dear Sir:

Mack Energy Corporation is requesting administrative approval from the NMOCD for approval of Off Lease Measurement/Surface Commingling of Gas production from multiple leases at a central sales meter located in Sec. 4 T16S R29E. The existing DCP gas line is no longer capable of handling production from this area. Mack Energy has installed a 10' gas pipeline to get Gas Production from this area to the sales point. All gas production will continue to be measured at the Tank Battery or Central Tank Battery using a Total Flow Meter.

Enclosed is a copy of this application which was filed with the New Mexico Oil Conservation Division on this date. Any objection to this application must be filed in writing within twenty days from this date at the Division's Santa Fe office located at 1220 South St. Francis Drive, Santa Fe, New Mexico, 87505. If no objection has been made within the 20 days period, this application may be approved administratively by the Division.

Should you have any questions please contact me @ 575-748-1288.

Sincerely,

A handwritten signature in black ink that reads "Jerry W. Sherrell".

Jerry W. Sherrell
Production Clerk
jerrys@mec.com

JWS/

Enclosures



P.O. Box 960
Artesia, NM 88211-0960
Office (575) 748-1288
Fax (575) 746-9539

April 16, 2018

VIA CERTIFIED MAIL 7015 3430 0000 2217 3460

Slash Exploration LP
PO Box 1973
Roswell, NM 88202

Dear Sir:

Mack Energy Corporation is requesting administrative approval from the NMOCD for approval of Off Lease Measurement/Surface Commingling of Gas production from multiple leases at a central sales meter located in Sec. 4 T16S R29E. The existing DCP gas line is no longer capable of handling production from this area. Mack Energy has installed a 10' gas pipeline to get Gas Production from this area to the sales point. All gas production will continue to be measured at the Tank Battery or Central Tank Battery using a Total Flow Meter.

Enclosed is a copy of this application which was filed with the New Mexico Oil Conservation Division on this date. Any objection to this application must be filed in writing within twenty days from this date at the Division's Santa Fe office located at 1220 South St. Francis Drive, Santa Fe, New Mexico, 87505. If no objection has been made within the 20 days period, this application may be approved administratively by the Division.

Should you have any questions please contact me @ 575-748-1288.

Sincerely,

Jerry W. Sherrell
Production Clerk
jerrys@mec.com

JWS/

Enclosures



P.O. Box 960
Artesia, NM 88211-0960
Office (575) 748-1288
Fax (575) 746-9539

April 16, 2018

VIA CERTIFIED MAIL 7015 3430 0000 2217 3514

Sarah C. Webb
2409 Cerro Road
Artesia, NM 88354

Dear Ma'am:

Mack Energy Corporation is requesting administrative approval from the NMOCD for approval of Off Lease Measurement/Surface Commingling of Gas production from multiple leases at a central sales meter located in Sec. 4 T16S R29E. The existing DCP gas line is no longer capable of handling production from this area. Mack Energy has installed a 10' gas pipeline to get Gas Production from this area to the sales point. All gas production will continue to be measured at the Tank Battery or Central Tank Battery using a Total Flow Meter.

Enclosed is a copy of this application which was filed with the New Mexico Oil Conservation Division on this date. Any objection to this application must be filed in writing within twenty days from this date at the Division's Santa Fe office located at 1220 South St. Francis Drive, Santa Fe, New Mexico, 87505. If no objection has been made within the 20 days period, this application may be approved administratively by the Division.

Should you have any questions please contact me @ 575-748-1288.

Sincerely,

A handwritten signature in black ink that reads "Jerry W. Sherrell".

Jerry W. Sherrell
Production Clerk
jerrys@mec.com

JWS/

Enclosures



P.O. Box 960
Artesia, NM 88211-0960
Office (575) 748-1288
Fax (575) 746-9539

April 16, 2018

VIA CERTIFIED MAIL 7015 3430 0000 2217 3507

Rodney B. Webb
1580 Highway 24
Weed, NM 88354

Dear Sir:

Mack Energy Corporation is requesting administrative approval from the NMOCD for approval of Off Lease Measurement/Surface Commingling of Gas production from multiple leases at a central sales meter located in Sec. 4 T16S R29E. The existing DCP gas line is no longer capable of handling production from this area. Mack Energy has installed a 10' gas pipeline to get Gas Production from this area to the sales point. All gas production will continue to be measured at the Tank Battery or Central Tank Battery using a Total Flow Meter.

Enclosed is a copy of this application which was filed with the New Mexico Oil Conservation Division on this date. Any objection to this application must be filed in writing within twenty days from this date at the Division's Santa Fe office located at 1220 South St. Francis Drive, Santa Fe, New Mexico, 87505. If no objection has been made within the 20 days period, this application may be approved administratively by the Division.

Should you have any questions please contact me @ 575-748-1288.

Sincerely,

A handwritten signature in black ink that reads "Jerry W. Sherrell".

Jerry W. Sherrell
Production Clerk
jerrys@mec.com

JWS/

Enclosures



P.O. Box 960
Artesia, NM 88211-0960
Office (575) 748-1288
Fax (575) 746-9539

April 16, 2018

VIA CERTIFIED MAIL 7015 3430 0000 2209 7025

*Commissioner of Public Lands
PO Box 1148
Santa Fe, NM 87504-1148*

Dear Sir:

Mack Energy Corporation is requesting administrative approval from the NMOCD for approval of Off Lease Measurement/Surface Commingling of Gas production from multiple leases at a central sales meter located in Sec. 4 T16S R29E. The existing DCP gas line is no longer capable of handling production from this area. Mack Energy has installed a 10' gas pipeline to get Gas Production from this area to the sales point. All gas production will continue to be measured at the Tank Battery or Central Tank Battery using a Total Flow Meter.

Enclosed is a copy of this application which was filed with the New Mexico Oil Conservation Division on this date. Any objection to this application must be filed in writing within twenty days from this date at the Division's Santa Fe office located at 1220 South St. Francis Drive, Santa Fe, New Mexico, 87505. If no objection has been made within the 20 days period, this application may be approved administratively by the Division.

Should you have any questions please contact me @ 575-748-1288.

Sincerely,

Jerry W. Sherrell
Production Clerk
jerrys@mec.com

JWS/

Enclosures



P.O. Box 960
Artesia, NM 88211-0960
Office (575) 748-1288
Fax (575) 746-9539

April 16, 2018

VIA CERTIFIED MAIL 7015 3430 0000 2217 3484

*Mossman-Midwest Company
PO Box 597
Roswell, NM 88202*

Dear Sir:

Mack Energy Corporation is requesting administrative approval from the NMOCD for approval of Off Lease Measurement/Surface Commingling of Gas production from multiple leases at a central sales meter located in Sec. 4 T16S R29E. The existing DCP gas line is no longer capable of handling production from this area. Mack Energy has installed a 10' gas pipeline to get Gas Production from this area to the sales point. All gas production will continue to be measured at the Tank Battery or Central Tank Battery using a Total Flow Meter.

Enclosed is a copy of this application which was filed with the New Mexico Oil Conservation Division on this date. Any objection to this application must be filed in writing within twenty days from this date at the Division's Santa Fe office located at 1220 South St. Francis Drive, Santa Fe, New Mexico, 87505. If no objection has been made within the 20 days period, this application may be approved administratively by the Division.

Should you have any questions please contact me @ 575-748-1288.

Sincerely,

A handwritten signature in cursive script that reads "Jerry W. Sherrell".

Jerry W. Sherrell
Production Clerk
jerrys@mec.com

JWS/

Enclosures



P.O. Box 960
Artesia, NM 88211-0960
Office (575) 748-1288
Fax (575) 746-9539

April 16, 2018

VIA CERTIFIED MAIL 7015 3430 0000 2217 3538

*Lampert Royalty Trust 2008
5646 Milton St. #413
Dallas, TX 75206*

Dear Sir:

Mack Energy Corporation is requesting administrative approval from the NMOCD for approval of Off Lease Measurement/Surface Commingling of Gas production from multiple leases at a central sales meter located in Sec. 4 T16S R29E. The existing DCP gas line is no longer capable of handling production from this area. Mack Energy has installed a 10' gas pipeline to get Gas Production from this area to the sales point. All gas production will continue to be measured at the Tank Battery or Central Tank Battery using a Total Flow Meter.

Enclosed is a copy of this application which was filed with the New Mexico Oil Conservation Division on this date. Any objection to this application must be filed in writing within twenty days from this date at the Division's Santa Fe office located at 1220 South St. Francis Drive, Santa Fe, New Mexico, 87505. If no objection has been made within the 20 days period, this application may be approved administratively by the Division.

Should you have any questions please contact me @ 575-748-1288.

Sincerely,

Jerry W. Sherrell
Production Clerk
jerrys@mec.com

JWS/

Enclosures



P.O. Box 960
Artesia, NM 88211-0960
Office (575) 748-1288
Fax (575) 746-9539

April 16, 2018

VIA CERTIFIED MAIL 7015 3430 0000 2217 3521

*Hanson McBride Petroleum
PO Box 1515
Roswell, NM 88202-1515*

Dear Sir:

Mack Energy Corporation is requesting administrative approval from the NMOCD for approval of Off Lease Measurement/Surface Commingling of Gas production from multiple leases at a central sales meter located in Sec. 4 T16S R29E. The existing DCP gas line is no longer capable of handling production from this area. Mack Energy has installed a 10' gas pipeline to get Gas Production from this area to the sales point. All gas production will continue to be measured at the Tank Battery or Central Tank Battery using a Total Flow Meter.

Enclosed is a copy of this application which was filed with the New Mexico Oil Conservation Division on this date. Any objection to this application must be filed in writing within twenty days from this date at the Division's Santa Fe office located at 1220 South St. Francis Drive, Santa Fe, New Mexico, 87505. If no objection has been made within the 20 days period, this application may be approved administratively by the Division.

Should you have any questions please contact me @ 575-748-1288.

Sincerely,

A handwritten signature in black ink that reads "Jerry W. Sherrell".

Jerry W. Sherrell
Production Clerk
jerrys@mec.com

JWS/

Enclosures



P.O. Box 960
Artesia, NM 88211-0960
Office (575) 748-1288
Fax (575) 746-9539

April 16, 2018

VIA CERTIFIED MAIL 7015 3430 0000 2217 3446

*Bogle Ltd. Company
PO Box 460
Dexter, NM 88230*

Dear Sir:

Mack Energy Corporation is requesting administrative approval from the NMOCD for approval of Off Lease Measurement/Surface Commingling of Gas production from multiple leases at a central sales meter located in Sec. 4 T16S R29E. The existing DCP gas line is no longer capable of handling production from this area. Mack Energy has installed a 10' gas pipeline to get Gas Production from this area to the sales point. All gas production will continue to be measured at the Tank Battery or Central Tank Battery using a Total Flow Meter.

Enclosed is a copy of this application which was filed with the New Mexico Oil Conservation Division on this date. Any objection to this application must be filed in writing within twenty days from this date at the Division's Santa Fe office located at 1220 South St. Francis Drive, Santa Fe, New Mexico, 87505. If no objection has been made within the 20 days period, this application may be approved administratively by the Division.

Should you have any questions please contact me @ 575-748-1288.

Sincerely,

A handwritten signature in black ink that reads "Jerry W. Sherrell".

Jerry W. Sherrell
Production Clerk
jerrys@mec.com

JWS/

Enclosures

District I
1625 N. French Dr., Hobbs, NM 88240
Phone: (575) 493-6161 Fax: (575) 493-6720
District II
311 S. First St., Artesia, NM 88210
Phone: (575) 748-1283 Fax: (575) 748-9720
District III
1000 Rio Brazos Road, Aztec, NM 87416
Phone: (505) 334-6178 Fax: (505) 334-6179
District IV
1220 S. St. Francis Dr., Santa Fe, NM 87505
Phone: (505) 476-3460 Fax: (505) 476-3462

State of New Mexico
Energy, Minerals & Natural Resources Department
OIL CONSERVATION DIVISION
1220 South St. Francis Dr.
Santa Fe, NM 87505

Form C-102
Revised August 1, 2011
Submit one copy to appropriate
District Office

☐ AMENDED REPORT

WELL LOCATION AND ACREAGE DEDICATION PLAT

¹ API Number		² Pool Code	³ Pool Name
		52770	Round Tank; San Andres
⁴ Property Code	⁵ Property Name		⁶ Well Number
37615	CALGARY FEDERAL		1
⁷ OGRID No.	⁸ Operator Name		⁹ Elevation
13837	MACK ENERGY CORPORATION		3708.3

" Surface Location

UL or lot no.	Section	Township	Range	Lot Idn	Feet from the	North/South line	Feet from the	East/West line	County
P	24	15 S	28 E		330	SOUTH	990	EAST	CHAVES

" Bottom Hole Location If Different From Surface

UL or lot no.	Section	Township	Range	Lot Idn	Feet from the	North/South line	Feet from the	East/West line	County

¹² Dedicated Acres	¹³ Joint or Infill	¹⁴ Consolidation Code	¹⁵ Order No.
40			

No allowable will be assigned to this completion until all interests have been consolidated or a non-standard unit has been approved by the division.

<p>S89°11'40"E 2644.79 FT</p> <p>NW CORNER SEC. 24 LAT. = 33.0088812°N LONG. = 104.0934097°W NMSP EAST (FT) N = 730755.04 E = 573549.47</p>		<p>S89°11'04"E 2643.77 FT</p> <p>N/4 CORNER SEC. 24 LAT. = 33.0085621°N LONG. = 104.0847856°W NMSP EAST (FT) N = 730717.85 E = 576193.31</p>		<p>S89°11'04"E 2643.77 FT</p> <p>NE CORNER SEC. 24 LAT. = 33.0084412°N LONG. = 104.0761650°W NMSP EAST (FT) N = 730680.21 E = 578836.12</p>	
<p>W/4 CORNER SEC. 24 LAT. = 33.0074119°N LONG. = 104.0933971°W NMSP EAST (FT) N = 728110.35 E = 573559.36</p>		<p>NOTE: LATITUDE AND LONGITUDE COORDINATES ARE SHOWN USING THE NORTH AMERICAN DATUM OF 1927 (NAD27), AND ARE IN DECIMAL DEGREE FORMAT.</p>		<p>E/4 CORNER SEC. 24 LAT. = 33.0012233°N LONG. = 104.0761728°W NMSP EAST (FT) N = 728054.20 E = 578840.13</p>	
<p>SW CORNER SEC. 24 LAT. = 32.9941448°N LONG. = 104.0933713°W NMSP EAST (FT) N = 725465.49 E = 573573.31</p>		<p>CALGARY FEDERAL #1 ELEV. = 3708.3' LAT. = 32.9949350°N (NAD27) LONG. = 104.0793996°W NMSP EAST (FT) N = 725764.01 E = 577856.38</p>		<p>SURFACE LOCATION</p> <p>SE CORNER SEC. 24 LAT. = 32.9940002°N LONG. = 104.0761714°W NMSP EAST (FT) N = 725426.53 E = 578846.38</p>	
<p>N89°33'59"W 2637.60 FT</p>		<p>990'</p>		<p>N89°33'59"W 2637.60 FT</p>	

" OPERATOR CERTIFICATION
I hereby certify that the information contained herein is true and complete to the best of my knowledge and belief and that this organization either owns a working interest or undivided mineral interest in the land including the proposed bottom hole location or has a right to drill this well at this location pursuant to a contract with an owner of such a mineral or working interest, or to a voluntary pooling agreement or a compulsory pooling order heretofore entered by the division.

Jerry W. Sherrell 12/18/13
Signature Date

Jerry W. Sherrell
Printed Name

jerrys@mec.com
E-mail Address

"SURVEYOR CERTIFICATION
I hereby certify that the well location shown on this plat was plotted from field notes of actual surveys made by me or under my supervision, and that the same is true and correct to the best of my belief.

AUGUST 2013
Date of Survey

[Signature]
Signature and Seal of Professional Surveyor

Certificate Number: F112785 E. J. RABBITT, PLS 12787
ED LAND SURVEY NO. 2062

District I
1625 N. French Dr., Hobbs, NM 88240
Phone: (505) 394-6161 Fax: (505) 394-6720
District II
511 S. First St., Artesia, NM 88210
Phone: (505) 748-1283 Fax: (505) 748-9720
District III
1000 Rio Brazos Road, Aztec, NM 87410
Phone: (505) 334-6178 Fax: (505) 334-6170
District IV
1220 S. St. Francis Dr., Santa Fe, NM 87505
Phone: (505) 476-3460 Fax: (505) 476-3462

State of New Mexico
Energy, Minerals & Natural Resources Department
OIL CONSERVATION DIVISION
1220 South St. Francis Dr.
Santa Fe, NM 87505

Form C-102
Revised August 1, 2011
Submit one copy to appropriate
District Office

☐ AMENDED REPORT

WELL LOCATION AND ACREAGE DEDICATION PLAT

¹ API Number		² Pool Code 52770		³ Pool Name Round Tank; San Andres	
⁴ Property Code 37615		⁵ Property Name CALGARY FEDERAL			⁶ Well Number 2
⁷ OGRID No. 13837		⁸ Operator Name MACK ENERGY CORPORATION			⁹ Elevation 3711.6

" Surface Location

UL or lot no.	Section	Township	Range	Lot Idn	Feet from the	North/South line	Feet from the	East/West line	County
I	24	15 S	28 E		1650	SOUTH	990	EAST	CHAVES

" Bottom Hole Location If Different From Surface

UL or lot no.	Section	Township	Range	Lot Idn	Feet from the	North/South line	Feet from the	East/West line	County
¹² Dedicated Acres 40		¹³ Joint or InHH		¹⁴ Consolidation Code		¹⁵ Order No.			

No allowable will be assigned to this completion until all interests have been consolidated or a non-standard unit has been approved by the division.

<p>589°11'40"E 2644.79 FT</p> <p>NW CORNER SEC. 24 LAT. = 33.0086812°N LONG. = 104.0934097°W NMSP EAST (FT) N = 730755.04 E = 573549.47</p>		<p>589°11'04"E 2643.77 FT</p> <p>N/4 CORNER SEC. 24 LAT. = 33.0085621°N LONG. = 104.0847856°W NMSP EAST (FT) N = 730717.85 E = 576193.31</p>		<p>589°11'04"E 2643.77 FT</p> <p>NE CORNER SEC. 24 LAT. = 33.0084412°N LONG. = 104.0761650°W NMSP EAST (FT) N = 730680.21 E = 578836.12</p>	
<p>W/4 CORNER SEC. 24 LAT. = 33.0074119°N LONG. = 104.0933971°W NMSP EAST (FT) N = 728110.35 E = 573559.36</p>		<p>NOTE: LATITUDE AND LONGITUDE COORDINATES ARE SHOWN USING THE NORTH AMERICAN DATUM OF 1927 (NAD27), AND ARE IN DECIMAL DEGREE FORMAT.</p>		<p>E/4 CORNER SEC. 24 LAT. = 33.0072233°N LONG. = 104.0761728°W NMSP EAST (FT) N = 728084.20 E = 578840.13</p>	
<p>SW CORNER SEC. 24 LAT. = 32.9941448°N LONG. = 104.0933713°W NMSP EAST (FT) N = 725466.49 E = 573573.31</p>		<p>CALGARY FEDERAL #2 ELEV. = 3711.6' LAT. = 32.9985620°N (NAD27) LONG. = 104.0794005°W NMSP EAST (FT) N = 727083.58 E = 577852.92</p>		<p>SURFACE LOCATION</p>	
<p>N89°33'59"W 2637.60 FT</p>		<p>N89°33'59"W 2637.60 FT</p>		<p>500°08'59"E 2628.36 FT</p>	

" OPERATOR CERTIFICATION
I hereby certify that the information contained herein is true and complete to the best of my knowledge and belief, and that this organization either owns a working interest or unleased mineral interest in the land including the proposed bottom hole location or has a right to drill this well at this location pursuant to a contract with an owner of such a mineral or working interest, or to a voluntary pooling agreement or a compulsory pooling order heretofore entered by the division.

Jerry W. Sherrell 12/18/13
Signature Date

Jerry W. Sherrell
Printed Name

jerrys@mec.com
E-mail Address

" SURVEYOR CERTIFICATION
I hereby certify that the well location shown on this plat was plotted from field notes of actual surveys made by me or under my supervision, and that the same is true and correct to the best of my belief.

AUGUST 7, 2013
Date of Survey

[Signature]
Signature and Seal of Professional Surveyor

Certificate Number FIDBOS-AR-TARAME-10, PLS 12797
SURVEY NO. 2003

District I
1625 N. French Dr., Hobbs, NM 88240
Phone: (505) 797-6161 Fax: (505) 293-0720
District II
811 S. First St., Artesia, NM 88210
Phone: (505) 748-1282 Fax: (505) 748-0720
District III
1000 Rio Hondo Road, Aztec, NM 87410
Phone: (505) 331-6175 Fax: (505) 331-6170
District IV
1220 S. St. Francis Dr., Santa Fe, NM 87505
Phone: (505) 476-3160 Fax: (505) 476-3162

State of New Mexico
Energy, Minerals & Natural Resources Department
OIL CONSERVATION DIVISION
1220 South St. Francis Dr.
Santa Fe, NM 87505

Form C-102
Revised August 1, 2011
Submit one copy to appropriate
District Office

☐ AMENDED REPORT

WELL LOCATION AND ACREAGE DEDICATION PLAT

¹ Well Number 30-0056493	² Pool Code 52770	³ Pool Name Round Tank; San Andres
⁴ Property Code 37615	⁵ Property Name CALGARY FEDERAL	
⁶ OGRID No. 13837	⁷ Operator Name MACK ENERGY CORPORATION	
	⁸ Well Number 5	⁹ Elevation 3727.1

¹⁰ Surface Location

UL or lot no.	Section	Township	Range	Lot Idn	Feet from the	North/South line	Feet from the	East/West line	County
11	24	15 S	28 E		2310	NORTH	890	EAST	CHAVES

¹¹ Bottom Hole Location If Different From Surface

UL or lot no.	Section	Township	Range	Lot Idn	Feet from the	North/South line	Feet from the	East/West line	County

¹² Dedicated Acres 40	¹³ Joint or Infill	¹⁴ Consolidation Code	¹⁵ Order No. 3-1
--	-------------------------------	----------------------------------	---------------------------------------

No allowable will be assigned to this completion until all interests have been consolidated or a non-standard unit has been approved by the division.

<p>589°11'40"E 2644.79 FT</p> <p>NW CORNER SEC. 24 LAT. = 33.0086812°N LONG. = 104.0934097°W NMSP EAST (FT) N = 730755.04 E = 573549.47</p>		<p>589°11'04"E 2643.77 FT</p> <p>N/4 CORNER SEC. 24 LAT. = 33.0086621°N LONG. = 104.0847856°W NMSP EAST (FT) N = 730717.85 E = 576193.31</p>		<p>589°11'04"E 2643.77 FT</p> <p>NE CORNER SEC. 24 LAT. = 33.0084412°N LONG. = 104.0761650°W NMSP EAST (FT) N = 730680.21 E = 578836.12</p>	
<p>589°11'04"E 2643.77 FT</p> <p>W/4 CORNER SEC. 24 LAT. = 33.0014118°N LONG. = 104.0933971°W NMSP EAST (FT) N = 728110.35 E = 573559.36</p>		<p>589°11'04"E 2643.77 FT</p> <p>CALGARY FEDERAL #5 ELEV. = 3727.1' LAT. = 33.0021335°N (NAD27) LONG. = 104.0790741°W NMSP EAST (FT) N = 728383.22 E = 577949.85</p>		<p>589°11'04"E 2643.77 FT</p> <p>E/4 CORNER SEC. 24 LAT. = 33.0012233°N LONG. = 104.0761728°W NMSP EAST (FT) N = 728054.20 E = 578840.13</p>	
<p>589°11'04"E 2643.77 FT</p> <p>SW CORNER SEC. 24 LAT. = 32.9941448°N LONG. = 104.0933713°W NMSP EAST (FT) N = 725166.49 E = 573573.31</p>		<p>589°11'04"E 2643.77 FT</p> <p>SE CORNER SEC. 24 LAT. = 32.9940908°N LONG. = 104.0761714°W NMSP EAST (FT) N = 725426.53 E = 578846.98</p>		<p>589°11'04"E 2643.77 FT</p>	
<p>NOTE: LATITUDE AND LONGITUDE COORDINATES ARE SHOWN USING THE NORTH AMERICAN DATUM OF 1927 (NAD27), AND ARE IN DECIMAL DEGREE FORMAT.</p>					

16 OPERATOR CERTIFICATION
I hereby certify that the information contained herein is true and complete to the best of my knowledge and belief, and that this organization either owns a working interest or indirect mineral interest in the land including the proposed bottom hole location or has a right to drill this well at this location pursuant to an agreement with an owner of such a mineral or working interest, or as a voluntary pooling agreement or a competitive pooling order heretofore entered by the division.

Jerry W. Sherrell **12/18/13**
Signature Date

Jerry W. Sherrell
Printed Name

jerrys@mec.com
Email Address

17 SURVEYOR CERTIFICATION
I hereby certify that the well location shown on this plat was plotted from field notes of actual surveys made by me or under my supervision, and that the same is true and correct to the best of my belief.

AUGUST 11 2013
Date of Survey

12707
Certificate Number

12707
Survey No.

District I
1625 N. French Dr., Hobbs, NM 88240
Phone: (575) 393-6161 Fax: (575) 393-0720
District II
811 S. First St., Artesia, NM 88210
Phone: (575) 748-1283 Fax: (575) 748-9720
District III
1000 Rio Brazos Road, Aztec, NM 87410
Phone: (505) 334-6178 Fax: (505) 334-6170
District IV
1220 S. St. Francis Dr., Santa Fe, NM 87505
Phone: (505) 476-3460 Fax: (505) 476-3462

State of New Mexico
Energy, Minerals & Natural Resources Department
OIL CONSERVATION DIVISION
1220 South St. Francis Dr.
Santa Fe, NM 87505

Form C-102
Revised August 1, 2011
Submit one copy to appropriate
District Office

☐ AMENDED REPORT

WELL LOCATION AND ACREAGE DEDICATION PLAT

¹ API Number 30-005-64194	² Pool Code 52770	³ Pool Name Round Tank; San Andres
⁴ Property Code 37615	⁵ Property Name CALGARY FEDERAL	
⁷ OGRID No. 13837	⁸ Operator Name MACK ENERGY CORPORATION	
		⁶ Well Number 6
		⁹ Elevation 3723.6

¹⁰ Surface Location

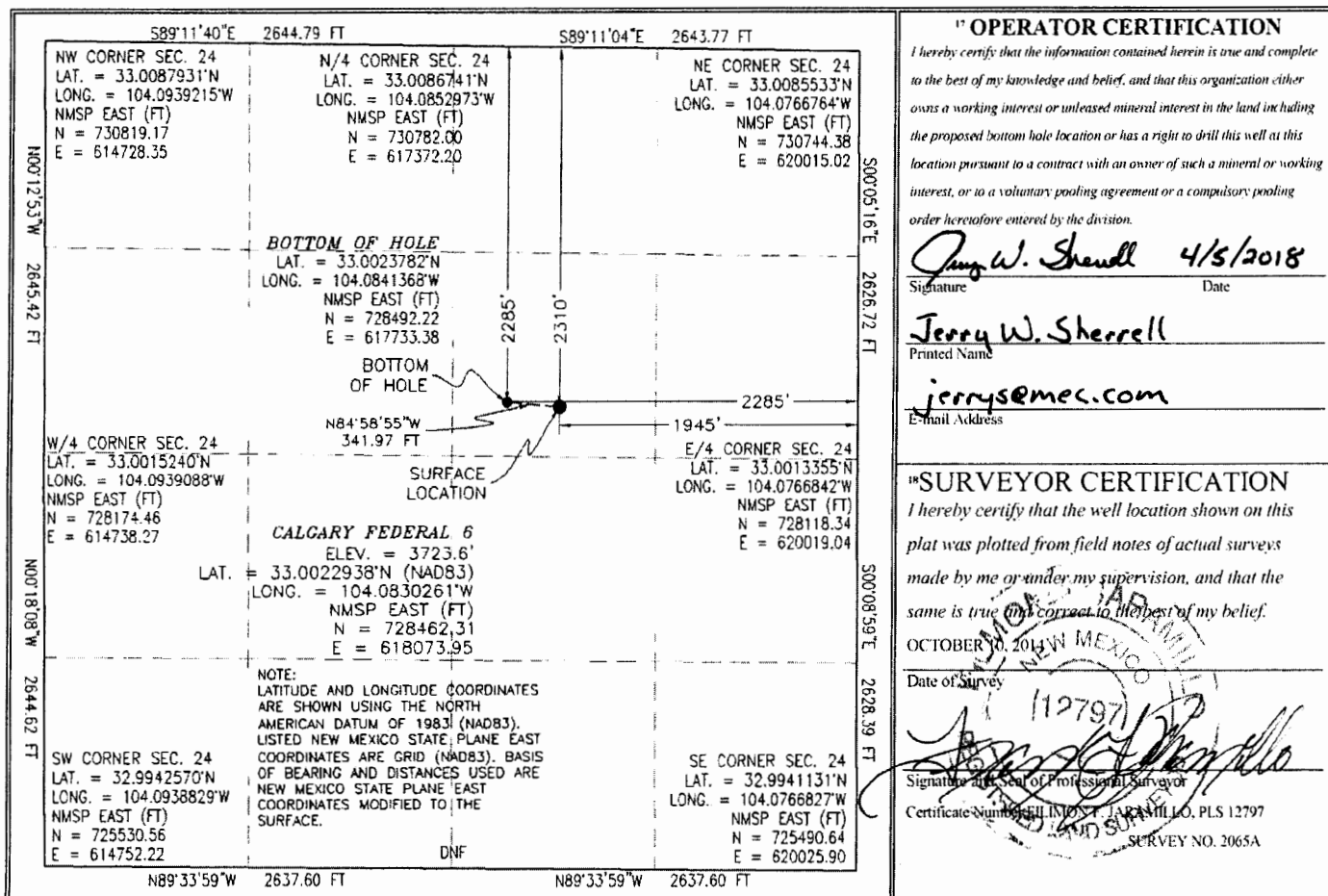
U/L or lot no.	Section	Township	Range	Lot Idn	Feet from the	North/South line	Feet from the	East/West line	County
G	24	15 S	28 E		2310	NORTH	1995	EAST	CHAVES

¹¹ Bottom Hole Location If Different From Surface

U/L or lot no.	Section	Township	Range	Lot Idn	Feet from the	North/South line	Feet from the	East/West line	County
G	24	15 S	28 E		2285	NORTH	2285	EAST	CHAVES

¹² Dedicated Acres 40	¹³ Joint or Infill	¹⁴ Consolidation Code	¹⁵ Order No.
--	-------------------------------	----------------------------------	-------------------------

No allowable will be assigned to this completion until all interests have been consolidated or a non-standard unit has been approved by the division.



☐ AMENDED REPORT

WELL LOCATION AND ACREAGE DEDICATION PLAT

¹ API Number		² Pool Code 52770	³ Pool Name Round Tank;San Andres	
⁴ Property Code 37615		⁵ Property Name CALGARY FEDERAL		⁶ Well Number 7
⁷ OGRID No. 13837		⁸ Operator Name MACK ENERGY CORPORATION		⁹ Elevation 3718.9

¹⁰ Surface Location

U1. or lot no.	Section	Township	Range	Lot Idn	Feet from the	North/South line	Feet from the	East/West line	County
F	24	15 S	28 E		2310	NORTH	1600	WEST	CHAVES

" Bottom Hole Location If Different From Surface

U.I. or lot no.	Section	Township	Range	Lot Idn	Feet from the	North/South line	Feet from the	East/West line	County
-----------------	---------	----------	-------	---------	---------------	------------------	---------------	----------------	--------

¹² Dedicated Acres 40	¹³ Joint or Infill	¹⁴ Consolidation Code	¹⁵ Order No.
-------------------------------------	-------------------------------	----------------------------------	-------------------------

No allowable will be assigned to this completion until all interests have been consolidated or a non-standard unit has been approved by the division.

589°11'40"E 2644.79 FT	S89°11'04"E 2643.77 FT	7" OPERATOR CERTIFICATION	
NW CORNER SEC. 24 LAT. = 33.0086812°N LONG. = 104.0934097°W NMSP EAST (FT) N = 730755.04 E = 573549.47	N/4 CORNER SEC. 24 LAT. = 33.0085621°N LONG. = 104.0847856°W NMSP EAST (FT) N = 730717.85 E = 576193.31	NE CORNER SEC. 24 LAT. = 33.0084412°N LONG. = 104.0761650°W NMSP EAST (FT) N = 730680.21 E = 578836.12	I hereby certify that the information contained herein is true and complete to the best of my knowledge and belief, and that this organization either owns a working interest or undivided mineral interest in the land including the proposed bottom hole location or has a right to drill this well at this location pursuant to a contract with an owner of such a mineral or working interest, or to a voluntary pooling agreement or a compulsory pooling order heretofore entered by the division.
CALGARY FEDERAL #7 ELEV. = 3718.9 LAT. = 33.0022605°N (NAD27) LONG. = 104.0881813°W NMSP EAST (FT) N = 728422.79 E = 575157.70			
SURFACE LOCATION 2310 1600'			Signature _____ Date 12/18/13 Jerry W. Sherrell Printed Name jerrys@mec.com E-mail Address
W/4 CORNER SEC. 24 LAT. = 33.0014119°N LONG. = 104.0933971°W NMSP EAST (FT) N = 728110.35 E = 573559.36	E/4 CORNER SEC. 24 LAT. = 33.0012233°N LONG. = 104.0761728°W NMSP EAST (FT) N = 728054.20 E = 578840.13		
NOTE: LATITUDE AND LONGITUDE COORDINATES ARE SHOWN USING THE NORTH AMERICAN DATUM OF 1927 (NAD27), AND ARE IN DECIMAL DEGREE FORMAT.			"SURVEYOR CERTIFICATION" I hereby certify that the well location shown on this plat was plotted from field notes of actual surveys made by me or under my supervision, and that the same is true and correct to the best of my belief. AUGUST 12, 2013 Date of Survey _____ Signature and Seal of Professional Surveyor _____ Certificate Number F11M001711-11-AM-1003-PLS 12797 SURVEY NO. 2066
SW CORNER SEC. 24 LAT. = 32.9941448°N LONG. = 104.0933713°W NMSP EAST (FT) N = 725466.49 E = 573573.31	SE CORNER SEC. 24 LAT. = 32.9940008°N LONG. = 104.0761714°W NMSP EAST (FT) N = 725426.53 E = 578846.98		
N89°33'59"W 2637.60 FT	N89°33'59"W 2637.60 FT		

District I
1625 N. French Dr., Hobbs, NM 88240
Phone: (575) 393-6161 Fax: (575) 393-0720
District II
1111 S. First St., Artesia, NM 88210
Phone: (575) 748-1261 Fax: (575) 748-9720
District III
1000 Rio Brazos Road, Aztec, NM 87410
Phone: (505) 334-6178 Fax: (505) 334-6176
District IV
1220 S. St. Francis Dr., Santa Fe, NM 87505
Phone: (505) 476-3460 Fax: (505) 476-3462

State of New Mexico
Energy, Minerals & Natural Resources Department
OIL CONSERVATION DIVISION
1220 South St. Francis Dr.
Santa Fe, NM 87505

Form C-102
Revised August 1, 2011
Submit one copy to appropriate
District Office

☐ AMENDED REPORT

WELL LOCATION AND ACREAGE DEDICATION PLAT

API Number 30-005-64295		Pool Code 52770	Pool Name Round Tank; San Andres
Property Code 318348	Property Name KLONDIKE STATE COM		Well Number 1H
OGRID No. 13837	Operator Name MACK ENERGY CORPORATION		Elevation 3579.5

* Surface Location

UL or lot no.	Section	Township	Range	Lot Idn	Feet from the	North/South line	Feet from the	East/West line	County
O	23	15 S	28 E		700	SOUTH	2285	EAST	CHAVES

" Bottom Hole Location If Different From Surface

UL or lot no.	Section	Township	Range	Lot Idn	Feet from the	North/South line	Feet from the	East/West line	County
G	35	15 S	28 E		2370	NORTH	2285	EAST	CHAVES

Dedicated Acres 280	Joint or Infill	Consolidation Code	Order No.
-------------------------------	-----------------	--------------------	-----------

No allowable will be assigned to this completion until all interests have been consolidated or a non-standard unit has been approved by the division.

<p>" OPERATOR CERTIFICATION</p> <p>I hereby certify that the information contained herein is true and complete to the best of my knowledge and belief, and that this organization either owns a working interest or unleased mineral interest in the land including the proposed bottom hole location or has a right to drill this well at this location pursuant to a contract with an owner of such a mineral or working interest, or to a voluntary pooling agreement or a compulsory pooling order heretofore entered by the division.</p> <p><i>Jerry W. Sherrill</i> 8/8/2017 Signature Date</p> <p>Jerry W. Sherrill Printed Name</p> <p>jerrys@mec.com Email Address</p>		<p>"SURVEYOR CERTIFICATION</p> <p>I hereby certify that the well location shown on this plat was plotted from field notes of actual surveys made by me or under my supervision, and that the same is true and correct to the best of my belief.</p> <p>MAY 18, 2017 Date of Survey</p> <p><i>[Signature]</i> Signature and Seal of Professional Surveyor</p> <p>Certificate Number ELIMAN F. JARAMILLO, PLS 17797 SURVEY NO. 5265</p>	
---	--	---	--

District I
1625 N. French Dr., Hobbs NM 88240
Phone: (575) 393-6161 Fax: (575) 393-0720
District II
811 S. First St., Artesia, NM 88210
Phone: (575) 748-1283 Fax: (575) 748-9720
District III
1000 Rio Brazos Road, Aztec, NM 87410
Phone: (505) 334-6178 Fax: (505) 334-6170
District IV
1220 S. St. Francis Dr., Santa Fe, NM 87505
Phone: (505) 476-3460 Fax: (505) 476-3462

NM OIL CONSERVATION
State of New Mexico
Energy, Minerals & Natural Resources Department
OIL CONSERVATION DIVISION
1220 South St. Francis
Santa Fe, NM 87505

Form C-102
Revised August 1, 2011
Submit one copy to appropriate
District Office
☐ AMENDED REPORT

WELL LOCATION AND ACREAGE DEDICATION PLAT

¹ API Number 30-005-64191		² Pool Code 52770		³ Pool Name Round Tank; San Andres	
⁴ Property Code 40378 319933		⁵ Property Name MARKHAM STATE COM			⁶ Well Number 1H
⁷ OGRID No. 13837		⁸ Operator Name MACK ENERGY CORPORATION			⁹ Elevation 3574.0

* Surface Location									
UT. or lot no. P	Section 23	Township 15 S	Range 28 E	Lot Idn	Feet from the 330	North/South line SOUTH	Feet from the 990	East/West line EAST	County CHAVES

* Bottom Hole Location If Different From Surface									
UL or lot no. H	Section 35	Township 15 S	Range 28 E	Lot Idn	Feet from the 2370	North/South line NORTH	Feet from the 965	East/ West line EAST	County CHAVES

¹⁰ Dedicated Acres 240 200	¹¹ Joint or Infill	¹² Consolidation Code	¹³ Order No.
---	-------------------------------	----------------------------------	-------------------------

No allowable will be assigned to this completion until all interests have been consolidated or a non-standard unit has been approved by the division.

" OPERATOR CERTIFICATION

I hereby certify that the information contained herein is true and complete to the best of my knowledge and belief, and that this organization either owns a working interest or unleased mineral interest in the land including the proposed bottom hole location or has a right to drill this well at this location pursuant to a contract with an owner of such a mineral or working interest, or to a voluntary pooling agreement or a compulsory pooling order heretofore entered in the division.

Signature: Deana Weaver Date: 11/16/17

Printed Name: **Deana Weaver**

E-mail Address: **dweaver@mec.com**

"SURVEYOR CERTIFICATION

I hereby certify that the well location shown on this plat was plotted from field notes of actual surveys made by me or under my supervision, and that the same is true and correct to the best of my belief.

DATE: 11/16/2017

Date of Survey

Signature and Seal of Professional Surveyor: [Signature]

Certificate Number: **ELIMON F. JARAMILLO, PL# 12797**

SURVEY NO. 2061A

**NM OIL CONSERVATION
ARTESIA DISTRICT**

MAR 28 2018

District I
1220 S. St. Francis Dr., Santa Fe, NM 87505
Phone: (505) 426-2400 Fax: (505) 426-2401
District II
1115 S. First St., Artesia, NM 87003
Phone: (505) 784-1233 Fax: (505) 784-1234
District III
1220 S. St. Francis Dr., Santa Fe, NM 87505
Phone: (505) 426-2400 Fax: (505) 426-2401
District IV
1220 S. St. Francis Dr., Santa Fe, NM 87505
Phone: (505) 426-2400 Fax: (505) 426-2401

State of New Mexico
Energy, Minerals & Natural Resources Department
OIL CONSERVATION DIVISION
1220 South St. Francis Dr.
Santa Fe, NM 87505

Form C-102
Revised August 1, 2011
Submit one copy to appropriate
District Office

☐ AMENDED REPORT

WELL LOCATION AND ACREAGE DEDICATION PLAT

API Number 30-005-64303		Pool Code 52770	Pool Name Round Tank; San Andres
Property Code 320083	Property Name MEDICINE HAT STATE COM		Well Number 111
UGRID No. 13837	Operator Name MACK ENERGY CORPORATION		Elevation 3577.6

*** Surface Location**

U or lot no.	Section	Township	Range	Lot Idn	Feet from the	North-South line	Feet from the	East-West line	County
M	35	15 S	28 E		200	SOUTH	900	WEST	CHAVES

*** Bottom Hole Location If Different From Surface**

U or lot no.	Section	Township	Range	Lot Idn	Feet from the	North-South line	Feet from the	East-West line	County
D	35	15 S	28 E		40	NORTH	965	WEST	CHAVES

Dedicated Acres	Joint or Infill	Consolidation Code	Order No.
160			

No allowable will be assigned to this completion until all interests have been consolidated or a non-standard unit has been approved by the division

WELL LOCATION AND ACREAGE DEDICATION PLAT

Map showing well location and acreage dedication plat. The map includes coordinates for the well location and the surface location. The well location is at the intersection of the 100' FUL 985' FUL and the 100' FUL 985' FUL. The surface location is at the intersection of the 100' FUL 985' FUL and the 100' FUL 985' FUL. The map also shows the location of the well relative to the surface location.

*** OPERATOR CERTIFICATION**

I hereby certify that the information contained herein is true and complete to the best of my knowledge and belief, and that the operator has taken every reasonable precaution to ensure that the information is true and complete.

Signature: Deana Weaver Date: 3.28.18

Printed Name: Deana Weaver

E-mail Address: dweaver@mec.com

*** SURVEYOR CERTIFICATION**

I hereby certify that the well location shown on this plat was plotted from field notes of actual surveys made by me or under my supervision, and that the same is true and correct to the best of my belief.

ON FEBRUARY 28, 2017

Date of Survey: 3.28.18

Signature and Seal of Professional Surveyor: [Signature]

License Number: 114001 JARVIS B. JARVIS JR. PLS 1270

SURVEY NO. 550

District I
1625 N. French Dr., Hobbs, NM 88240
Phone: (575) 393-6161 Fax: (575) 393-0720
District II
811 S. First St., Artesia, NM 88210
Phone: (575) 748-1283 Fax: (575) 748-9720
District III
1000 Rio Brazos Road, Aztec, NM 87410
Phone: (505) 334-6178 Fax: (505) 334-6170
District IV
1220 S. St. Francis Dr., Santa Fe, NM 87505
Phone: (505) 476-3460 Fax: (505) 476-3462

State of New Mexico
Energy, Minerals & Natural Resources Department
OIL CONSERVATION DIVISION
1220 South St. Francis Dr.
Santa Fe, NM 87505

Form C-102
Revised August 1, 2011
Submit one copy to appropriate
District Office

☐ AMENDED REPORT

WELL LOCATION AND ACREAGE DEDICATION PLAT

¹ API Number 30-005-64296	² Pool Code 52770	³ Pool Name Round Tank; San Andres
⁴ Property Code 320083	⁵ Property Name MEDICINE HAT STATE COM	
⁷ OGRID No. 13837	⁸ Operator Name MACK ENERGY CORPORATION	
		⁶ Well Number 2H
		⁹ Elevation 3577.4

¹⁰ Surface Location

UL or lot no.	Section	Township	Range	Lot Idn	Feet from the	North/South line	Feet from the	East/West line	County
C	35	15 S	28 E		500	NORTH	2285	WEST	CHAVES

¹¹ Bottom Hole Location If Different From Surface

UL or lot no.	Section	Township	Range	Lot Idn	Feet from the	North/South line	Feet from the	East/ West line	County
N	35	15 S	28 E		270	SOUTH	2285	WEST	CHAVES

¹² Dedicated Acres 160	¹³ Joint or Infill	¹⁴ Consolidation Code	¹⁵ Order No.
---	-------------------------------	----------------------------------	-------------------------

No allowable will be assigned to this completion until all interests have been consolidated or a non-standard unit has been approved by the division.

<p>S88°35'13"E 2700.96 FT</p> <p>N00°45'48"W 2642.77 FT</p> <p>NW CORNER SEC. 35 LAT. = 32.9798966°N LONG. = 104.1112325°W NMSP EAST (FT) N = 720294.20 E = 609443.93</p> <p>W Q CORNER SEC. 35 LAT. = 32.9726351°N LONG. = 104.1111358°W NMSP EAST (FT) N = 717652.34 E = 609479.13</p> <p>SW CORNER SEC. 35 LAT. = 32.9653743°N LONG. = 104.1110220°W NMSP EAST (FT) N = 715010.75 E = 609519.63</p> <p>S89°46'29"W 2652.08 FT</p>		<p>N89°43'13"E 2635.26 FT</p> <p>N Q CORNER SEC. 35 LAT. = 32.9796976°N LONG. = 104.1024299°W NMSP EAST (FT) N = 720227.61 E = 612143.37</p> <p>NE CORNER SEC. 35 LAT. = 32.9797168°N LONG. = 104.0938384°W NMSP EAST (FT) N = 720240.47 E = 614777.92</p> <p>E Q CORNER SEC. 35 LAT. = 32.9725723°N LONG. = 104.0938200°W NMSP EAST (FT) N = 717641.13 E = 614789.47</p> <p>S89°38'01"W 2632.86 FT</p>		<p>17 OPERATOR CERTIFICATION</p> <p>I hereby certify that the information contained herein is true and complete to the best of my knowledge and belief, and that this organization either owns a working interest or unleased mineral interest in the land including the proposed bottom hole location or has a right to drill this well at this location pursuant to a contract with an owner of such a mineral or working interest, or to a voluntary pooling agreement or a compulsory pooling order heretofore entered by the division.</p> <p><i>Jerry W. Sherrell</i> 4/6/2018 Signature Date</p> <p><i>Jerry W. Sherrell</i> Printed Name</p> <p><i>jerryse@mecc.com</i> Email Address</p>
<p>S00°49'07"E 4449.59 FT</p> <p>SURFACE LOCATION</p> <p>MEDICINE HAT STATE COM 2H ELEV. = 3577.4' LAT. = 32.9783533°N (NAD83) LONG. = 104.1037618°W NMSP EAST (FT) N = 719737.61 E = 611736.02</p> <p>NOTE: LATITUDE AND LONGITUDE COORDINATES ARE SHOWN USING THE NORTH AMERICAN DATUM OF 1983 (NAD83) LISTED NEW MEXICO STATE PLANE EAST COORDINATES ARE GRID (NAD83). BASIS OF BEARING AND DISTANCES USED ARE NEW MEXICO STATE PLANE EAST COORDINATES MODIFIED TO THE SURFACE VERTICAL DATUM NAVD83.</p> <p>BOTTOM OF HOLE LAT. = 32.9661274°N LONG. = 104.1035851°W NMSP EAST (FT) N = 715289.63 E = 611799.89</p> <p>BOTTOM OF HOLE LAT. = 32.9653743°N LONG. = 104.1110220°W NMSP EAST (FT) N = 715010.75 E = 609519.63</p>		<p>18 SURVEYOR CERTIFICATION</p> <p>I hereby certify that the well location shown on this plat was plotted from field notes of actual surveys made by me or under my supervision, and that the same is true and correct to the best of my belief.</p> <p>JUNE 23, 2017 Date of Survey</p> <p><i>Filimon F. Jaramillo</i> Signature and Seal of Professional Surveyor</p> <p>Certificate Number FILIMON F. JARAMILLO, PLS 12797</p> <p>SURVEY NO. 5308</p>		

District I
1625 N. French Dr., Hobbs, NM 88240
Phone: (505) 393-6161 Fax: (505) 393-0720
District II
811 S. First St., Artesia, NM 88210
Phone: (505) 748-1283 Fax: (505) 748-9720
District III
1000 Rio Brazos Road, Aztec, NM 87410
Phone: (505) 334-6178 Fax: (505) 334-6170
District IV
1220 S. St. Francis Dr., Santa Fe, NM 87505
Phone: (505) 476-3460 Fax: (505) 476-3462

State of New Mexico
Energy, Minerals & Natural Resources Department
OIL CONSERVATION DIVISION
1220 South St. Francis Dr.
Santa Fe, NM 87505

Form C-102
Revised August 1, 2011
Submit one copy to appropriate
District Office

☐ AMENDED REPORT

WELL LOCATION AND ACREAGE DEDICATION PLAT

¹ API Number 30-025-64294	² Pool Code 52770	³ Pool Name Round Tank; San Andres
⁴ Property Code 316527	⁵ Property Name AJAX STATE COM	⁶ Well Number 1H
⁷ OGRID No. 13837	⁸ Operator Name MACK ENERGY CORPORATION	⁹ Elevation 3649.8

¹⁰ Surface Location

UL or lot no.	Section	Township	Range	Lot Idn	Feet from the	North/South line	Feet from the	East/West line	County
A	36	15 S	28 E		736	NORTH	464	EAST	CHAVES

¹¹ Bottom Hole Location If Different From Surface

UL or lot no.	Section	Township	Range	Lot Idn	Feet from the	North/South line	Feet from the	East/ West line	County
A	25	15 S	28 E		5	NORTH	355	EAST	CHAVES

¹² Dedicated Acres	¹³ Joint or Infill	¹⁴ Consolidation Code	¹⁵ Order No.
-------------------------------	-------------------------------	----------------------------------	-------------------------

No allowable will be assigned to this completion until all interests have been consolidated or a non-standard unit has been approved by the division.

<p>NW CORNER SEC. 25 LAT. = 32.9942570°N LONG. = 104.0938829°W NMSP EAST (FT) N = 725530.56 E = 614752.22</p> <p>W Q CORNER SEC. 25 LAT. = 32.9869876°N LONG. = 104.0938669°W NMSP EAST (FT) N = 722885.75 E = 614763.15</p> <p>NW CORNER SEC. 36 LAT. = 32.9797168°N LONG. = 104.0938384°W NMSP EAST (FT) N = 720240.47 E = 614777.92</p> <p>W Q CORNER SEC. 36 LAT. = 32.9725723°N LONG. = 104.0938200°W NMSP EAST (FT) N = 717641.13 E = 614789.47</p> <p>SW CORNER SEC. 36 LAT. = 32.9654174°N LONG. = 104.0937948°W NMSP EAST (FT) N = 715038.00 E = 614803.13</p>		<p>589°33'59"E 2637.60 FT</p> <p>589°33'59"E 2637.60 FT</p> <p>LAST TAKE POINT 100' FNL, 360' FEL LAT. = 32.9938481°N LONG. = 104.0778458°W NMSP EAST (FT) N = 725393.34 E = 619669.53</p> <p>NOTE: LATITUDE AND LONGITUDE COORDINATES ARE SHOWN USING THE NORTH AMERICAN DATUM OF 1983 (NAD83) LISTED NEW MEXICO STATE PLANE EAST COORDINATES ARE GRID (NAD83). BASIS OF BEARING AND DISTANCES USED ARE NEW MEXICO STATE PLANE EAST COORDINATES MODIFIED TO THE SURFACE, VERTICAL DATUM NAVD83.</p> <p>LAST TAKE POINT 80' FNL, 447' FEL LAT. = 32.9795103°N LONG. = 104.0781531°W NMSP EAST (FT) N = 720176.65 E = 619587.97</p> <p>FIRST TAKE POINT LAT. = 32.9795103°N LONG. = 104.0781531°W NMSP EAST (FT) N = 720176.65 E = 619587.97</p> <p>NE CORNER SEC. 25 LAT. = 32.9941131°N LONG. = 104.0766827°W NMSP EAST (FT) N = 725490.64 E = 620025.90</p> <p>E Q CORNER SEC. 25 LAT. = 32.9869717°N LONG. = 104.0765798°W NMSP EAST (FT) N = 722892.47 E = 620063.79</p> <p>NE CORNER SEC. 36 LAT. = 32.9797296°N LONG. = 104.0766964°W NMSP EAST (FT) N = 720257.54 E = 620034.47</p> <p>SE CORNER SEC. 36 LAT. = 32.9653776°N LONG. = 104.0765635°W NMSP EAST (FT) N = 715035.98 E = 620087.96</p>		<p>¹⁷ OPERATOR CERTIFICATION</p> <p>I hereby certify that the information contained herein is true and complete to the best of my knowledge and belief, and that this organization either owns a working interest or unleased mineral interest in the land including the proposed bottom hole location or has a right to drill this well at this location pursuant to a contract with an owner of such a mineral or working interest, or to a voluntary pooling agreement or a compulsory pooling order heretofore entered by the division.</p> <p><i>Jerry W. Sherrill</i> 4/13/2018 Signature Date</p> <p>Jerry W. Sherrill Printed Name</p> <p>jerry@mecc.com E-mail Address</p> <p>¹⁸ SURVEYOR CERTIFICATION</p> <p>I hereby certify that the well location shown on this plat was plotted from field notes of actual surveys made by me or under my supervision, and that the same is true and correct to the best of my belief.</p> <p>APRIL 6, 2018 Date of Survey</p> <p>NEW MEXICO 12797 F. JARAMILLO Signature and Seal of Professional Surveyor Certificate Number F. JARAMILLO, PLS 12797 SURVEY NO. 4782C</p>	
---	--	--	--	--	--

District I
1625 N. French Dr., Hobbs, NM 88240
Phone: (575) 393-6161 Fax: (575) 393-0720
District II
811 S. First St., Artesia, NM 88210
Phone: (575) 748-1283 Fax: (575) 748-9720
District III
1000 Rio Brazos Road, Aztec, NM 87410
Phone: (505) 334-6178 Fax: (505) 334-6170
District IV
1220 S. St. Francis Dr., Santa Fe, NM 87505
Phone: (505) 476-3460 Fax: (505) 476-3462

State of New Mexico
Energy, Minerals & Natural Resources Department
OIL CONSERVATION DIVISION
1220 South St. Francis Dr.
Santa Fe, NM 87505

Form C-102
Revised August 1, 2011
Submit one copy to appropriate
District Office

☐ AMENDED REPORT

WELL LOCATION AND ACREAGE DEDICATION PLAT

¹ API Number		² Pool Code 52770	³ Pool Name Round Tank; San Andres
⁴ Property Code	⁵ Property Name RED DEER FEDERAL COM		⁶ Well Number 2H
⁷ OGRID No. 13837	⁸ Operator Name MACK ENERGY CORPORATION		⁹ Elevation 3578.1

¹⁰ Surface Location

UL or lot no.	Section	Township	Range	Lot Idn	Feet from the	North/South line	Feet from the	East/West line	County
C	35	15 S	28 E		350	NORTH	2285	WEST	CHAVES

¹¹ Bottom Hole Location If Different From Surface

UL or lot no.	Section	Township	Range	Lot Idn	Feet from the	North/South line	Feet from the	East/ West line	County
C	26	15 S	28 E		270	NORTH	2285	WEST	CHAVES

¹² Dedicated Acres	¹³ Joint or Infill	¹⁴ Consolidation Code	¹⁵ Order No.
-------------------------------	-------------------------------	----------------------------------	-------------------------

No allowable will be assigned to this completion until all interests have been consolidated or a non-standard unit has been approved by the division.

<p>17 OPERATOR CERTIFICATION</p> <p>I hereby certify that the information contained herein is true and complete to the best of my knowledge and belief, and that this organization either owns a working interest or unleased mineral interest in the land including the proposed bottom hole location or has a right to drill this well at this location pursuant to a contract with an owner of such a mineral or working interest, or to a voluntary pooling agreement or a compulsory pooling order heretofore entered by the division.</p> <p><i>Jerry W. Sherrell</i> 4/6/2018 Signature Date</p> <p>Jerry W. Sherrell Printed Name</p> <p>jerryse@mec.com E-mail Address</p>		<p>18 SURVEYOR CERTIFICATION</p> <p>I hereby certify that the well location shown on this plat was plotted from field notes of actual surveys made by me or under my supervision, and that the same is true and correct to the best of my belief.</p> <p>JUNE 23, 2017 Date of Survey</p> <p><i>[Signature]</i> Signature and Seal of Professional Surveyor</p> <p>Certificate Number FILIMON E. JARAMILLO, PLS 12797</p> <p>SURVEY NO. 5307</p>	
--	--	---	--

District I
1625 N. French Dr., Hobbs, NM 88240
Phone: (575) 393-6161 Fax: (575) 393-0770
District II
811 S. First St., Artesia, NM 88210
Phone: (575) 748-1281 Fax: (575) 748-4720
District III
1000 Rio Brazos Road, Aztec, NM 87410
Phone: (505) 334-6178 Fax: (505) 334-6170
District IV
1220 S. St. Francis Dr., Santa Fe, NM 87505
Phone: (505) 476-3460 Fax: (505) 476-3462

State of New Mexico
Energy, Minerals & Natural Resources Department
OIL CONSERVATION DIVISION
1220 South St. Francis Dr.
Santa Fe, NM 87505

Form C-102
Revised August 1, 2011
Submit one copy to appropriate
District Office

☐ AMENDED REPORT

WELL LOCATION AND ACREAGE DEDICATION PLAT

API Number 30-005-64300		Pool Code 52770	Pool Name Round Tank, San Andres
Property Code	Property Name WHITE ROCK FEDERAL		Well Number 1H
OGRID No. 13837	Operator Name MACK ENERGY CORPORATION		Elevation 3790.3

Surface Location

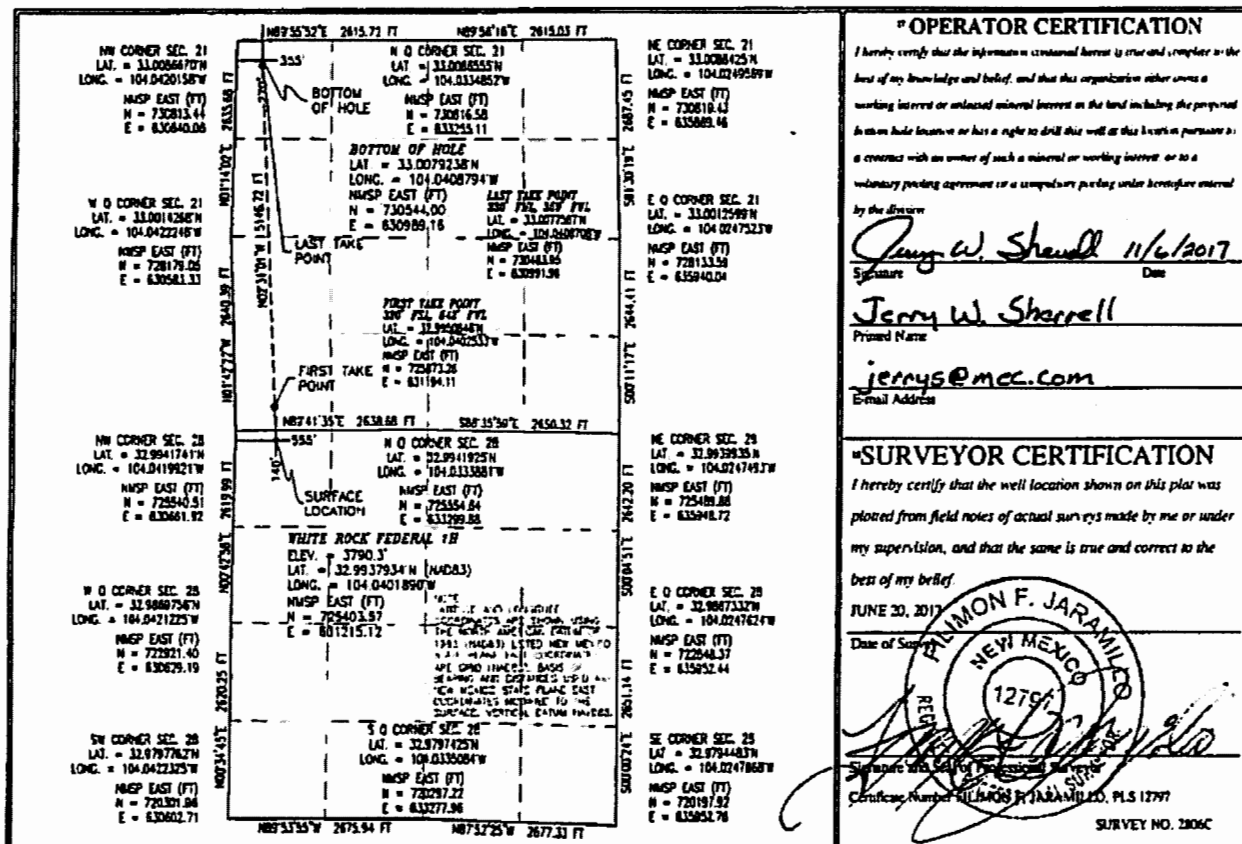
UL or lot no.	Section	Township	Range	Lot Ida	Feet from the	North/South line	Feet from the	East/West line	County
D	28	15 S	29 E		140	NORTH	555	WEST	CHAVES

Bottom Hole Location If Different From Surface

UL or lot no.	Section	Township	Range	Lot Ida	Feet from the	North/South line	Feet from the	East/West line	County
D	21	15 S	29 E		270	NORTH	355	WEST	CHAVES

Dedicated Acres	Joint or Infill	Consolidation Code	Order No.
160			

No allowable will be assigned to this completion until all interests have been consolidated or a non-standard unit has been approved by the division.



NM OIL CONSERVATION

ARTESIA DISTRICT

OCT 03 2017

District I
1625 N. Francis Dr. Santa Fe, NM 87505
Phone (505) 426-4100 Fax (505) 426-4101
District II
4115 East St. Santa Fe, NM 87505
Phone (505) 733-1255 Fax (505) 733-1256
District III
1300 Rio Pecos Road, Artesia, NM 87007
Phone (505) 331-6774 Fax (505) 331-6775
District IV
1220 S. St. Francis Dr. Santa Fe, NM 87505
Phone (505) 476-3460 Fax (505) 476-3462

State of New Mexico
Energy, Minerals & Natural Resources Department

OIL CONSERVATION DIVISION

1220 South St. Francis Dr.
Santa Fe, NM 87505

RECEIVED

Form C-102
Revised August 1, 2011

Submit one copy to appropriate
District Office

☐ AMENDED REPORT

WELL LOCATION AND ACREAGE DEDICATION PLAT

*API Number 30-005-64301	*Pool Code 52770	*Pool Name Round Tank; San Andres
*Property Code 314853	*Property Name WHITE ROCK FEDERAL	*Well Number 2H
*GRID No. 13837	*Operator Name MACK ENERGY CORPORATION	*Elevation 3806.6

* Surface Location

UL or lot no.	Section	Township	Range	Lot Idn	Feet from the	North/South line	Feet from the	East/West line	County
C	28	15 S	29 E		140	NORTH	1675	WEST	CHAVES

* Bottom Hole Location If Different From Surface

UL or lot no.	Section	Township	Range	Lot Idn	Feet from the	North/South line	Feet from the	East/West line	County
C	21	15 S	29 E		270	NORTH	1675	WEST	CHAVES

*Dedicated Acres	*Joint or In/In	*Consolidation Code	*Order No.

No allowable will be assigned to this completion until all interests have been consolidated or a non-standard unit has been approved by the division.

<p>* OPERATOR CERTIFICATION</p> <p>I hereby certify that the information contained herein is true and complete to the best of my knowledge and belief, and that this organization either owns a working interest in the oil and mineral interest in the land including the proposed bottom hole location or has a right to drill this well in this location pursuant to a contract with one or more of such mineral or working interest or to a voluntary pooling agreement or a compulsory pooling order therefore entered by the division.</p> <p>Signature: <u>Deana Weaver</u> Date: <u>10/2/17</u></p> <p>Printed Name: <u>Deana Weaver</u></p> <p>E-mail Address: <u>dweaver@mec.com</u></p>		<p>* SURVEYOR CERTIFICATION</p> <p>I hereby certify that the well location shown on this plat was plotted from field notes of actual surveys made by me or under my supervision, and that the same is true and correct to the best of my belief.</p> <p>DATE: <u>NOV 20 2017</u></p> <p>Date of Survey: <u>NOV 20 2017</u></p> <p>Signature and Seal of Professional Surveyor: <u>[Signature]</u></p> <p>Certification Number: <u>014000101</u> (SARANILLO PLS 1287)</p> <p>SURVEY NO: <u>57644</u></p>	
---	--	--	--

NW CORNER SEC. 20 LAT. = 33.0086773°N LONG. = 104.0592070°W NMSP EAST (FT) N = 730802.99 E = 625370.10	N/4 CORNER SEC. 20 LAT. = 33.0086712°N LONG. = 104.0506060°W NMSP EAST (FT) N = 730807.76 E = 628006.72	NE CORNER SEC. 20 LAT. = 33.0086670°N LONG. = 104.0420158°W NMSP EAST (FT) N = 730813.44 E = 630640.06	
<p>NOTE: LATITUDE AND LONGITUDE COORDINATES ARE SHOWN USING THE NORTH AMERICAN DATUM OF 1983 (NAD83). LISTED NEW MEXICO STATE PLANE EAST COORDINATES ARE GRID (NAD83), BASES OF BEARING AND DISTANCES USED ARE NEW MEXICO STATE PLANE EAST COORDINATES MODIFIED TO THE SURFACE.</p>			
<p>W/4 CORNER SEC. 20 LAT. = 33.0014276°N LONG. = 104.0592265°W NMSP EAST (FT) N = 728165.36 E = 625371.02</p>	<p>PRINCE RUPERT FEDERAL 1 ELEV. = 3749.7' LAT. = 32.9993990°N (NAD83) LONG. = 104.0581501°W NMSP EAST (FT) N = 727428.14 E = 625702.92</p>	<p>E/4 CORNER SEC. 20 LAT. = 33.0014268°N LONG. = 104.0422246°W NMSP EAST (FT) N = 728179.05 E = 630583.33</p>	
<p>1900' SURFACE LOCATION</p> <p>330' 356' 266.40 F</p> <p>1649' BOTTOM OF HOLE</p> <p>SW CORNER SEC. 20 LAT. = 32.9941778°N LONG. = 104.0592205°W NMSP EAST (FT) N = 725527.69 E = 625379.72</p> <p>S/4 CORNER SEC. 20 LAT. = 32.9941805°N LONG. = 104.0506126°W NMSP EAST (FT) N = 726535.63 E = 628018.88</p> <p>SE CORNER SEC. 20 LAT. = 32.9941741°N LONG. = 104.0419921°W NMSP EAST (FT) N = 725540.51 E = 630661.92</p>			

589°49'39"W 2639.85 FT

589°53'39"W 2643.73 FT

501°14'02"W 2633.68 FT

501°14'22"E 2640.39 FT

"OPERATOR CERTIFICATION"

I hereby certify that the information contained herein is true and complete to the best of my knowledge and belief, and that this organization neither owns a working interest or undivided mineral interest in the land including the proposed bottom hole location or has a right to drill this well on this location pursuant to a contract with an owner of such a mineral or working interest, or to a voluntary pooling agreement or a compulsory pooling order heretofore entered by the division.

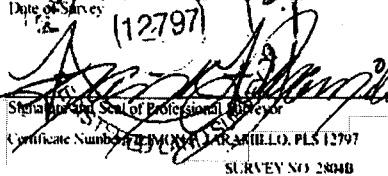
Deana Weaver 10.20.
 Signature Date

Deana Weaver
 Printed Name

dweaver@mec.com
 E-mail Address

"SURVEYOR CERTIFICATION"

I hereby certify that the well location shown on this plat was plotted from field notes of actual surveys made by me or under my supervision, and that the same are true and correct to the best of my belief.

JUL 15 2014 NEW MEXICO
 State of New Mexico
 Date of Survey (12797)

 Certificate Number 12797 (MEX) LAR ANILLO, PLS 12797
 SURVEY NO. 28440

District I
1625 N. French Dr., Hobbs, NM 88240
Phone: (575) 393-6161 Fax: (575) 393-0720
District II
911 S. First St., Artesia, NM 85210
Phone: (575) 748-1283 Fax: (575) 748-9720
District III
1000 Rio Brazos Road, Aztec, NM 87410
Phone: (505) 334-6178 Fax: (505) 334-6170
District IV
1220 S. St. Francis Dr., Santa Fe, NM 87505
Phone: (505) 476-3460 Fax: (505) 476-3462

State of New Mexico
Energy, Minerals & Natural Resources Department
OIL CONSERVATION DIVISION
1220 South St. Francis Dr.
Santa Fe, NM 87505

Form C-102
Revised August 1, 2011
Submit one copy to appropriate
District Office

☐ AMENDED REPORT

WELL LOCATION AND ACREAGE DEDICATION PLAT

¹ API Number		² Pool Code 52770		³ Pool Name Round Tank; San Andres	
⁴ Property Code		⁵ Property Name PRINCE RUPERT FEDERAL			⁶ Well Number 2
⁷ OGRID No. 13837		⁸ Operator Name MACK ENERGY CORPORATION			⁹ Elevation 3758.0
* Surface Location					
U/L or lot no. K	Section 20	Township 15 S	Range 29 E	Lot Idn	Feet from the 1650
				North/South line SOUTH	Feet from the 1650
				East/West line WEST	County CHAVES
** Bottom Hole Location If Different From Surface					
U/L or lot no.	Section	Township	Range	Lot Idn	Feet from the
				North/South line	Feet from the
				East/West line	County
¹² Dedicated Acres 40		¹³ Joint or Infill		¹⁴ Consolidation Code	
¹⁵ Order No.					

No allowable will be assigned to this completion until all interests have been consolidated or a non-standard unit has been approved by the division.

N89°53'47"E 2637.31 FT		N89°52'35"E 2634.03 FT	
NW CORNER SEC. 20 LAT. = 33.0086773°N LONG. = 104.0592070°W NMSP EAST (FT) N = 730802.99 E = 625370.10	N/4 CORNER SEC. 20 LAT. = 33.0086712°N LONG. = 104.0506060°W NMSP EAST (FT) N = 730807.76 E = 628006.72	NE CORNER SEC. 20 LAT. = 33.0086670°N LONG. = 104.0420158°W NMSP EAST (FT) N = 730813.44 E = 630640.06	
NOTE: LATITUDE AND LONGITUDE COORDINATES ARE SHOWN USING THE NORTH AMERICAN DATUM OF 1983 (NAD83). LISTED NEW MEXICO STATE PLANE EAST COORDINATES ARE GRID (NAD83). BASIS OF BEARING AND DISTANCES USED ARE NEW MEXICO STATE PLANE EAST COORDINATES MODIFIED TO THE SURFACE.			
W/4 CORNER SEC. 20 LAT. = 33.0014276°N LONG. = 104.0592265°W NMSP EAST (FT) N = 728185.36 E = 625371.02	PRINCE RUPERT FEDERAL #2 ELEV. = 3758.0' LAT. = 32.9987136°N (NAD83) LONG. = 104.0538436°W NMSP EAST (FT) N = 727182.28 E = 627023.87		E/4 CORNER SEC. 20 LAT. = 33.0014268°N LONG. = 104.0422246°W NMSP EAST (FT) N = 728179.05 E = 630583.33
SURFACE LOCATION			
SW CORNER SEC. 20 LAT. = 32.9941778°N LONG. = 104.0592205°W NMSP EAST (FT) N = 725527.69 E = 625379.72	S/4 CORNER SEC. 20 LAT. = 32.9941805°N LONG. = 104.0506126°W NMSP EAST (FT) N = 725535.63 E = 628018.88	SE CORNER SEC. 20 LAT. = 32.9941741°N LONG. = 104.0419921°W NMSP EAST (FT) N = 725540.51 E = 630661.92	
589°49'39"W 2639.85 FT		589°53'39"W 2643.73 FT	

" OPERATOR CERTIFICATION

I hereby certify that the information contained herein is true and complete to the best of my knowledge and belief, and that this organization either owns a working interest or unleased mineral interest in the land including the proposed bottom hole location or has a right to drill this well at this location pursuant to a contract with an owner of such a mineral or working interest, or to a voluntary pooling agreement or a compulsory pooling order heretofore entered by the division.

Signature: Jerry W. Sherrell Date: 8-25-14

Printed Name: Jerry W. Sherrell

E-mail Address: jerry5@mecc.com

"SURVEYOR CERTIFICATION

I hereby certify that the well location shown on this plat was plotted from field notes of actual surveys made by me or under my supervision, and that the same is true and correct to the best of my belief.

APRIL 24 2014 NEW MEXICO

Date of Survey: 12797

Signature and Seal of Professional Surveyor: [Signature]

Certificate Number: 12797 (KRAMILLO, PLS 12797)

SURVEY NO. 2805

District I
1625 N. French Dr., Hobbs, NM 88240
Phone: (575) 393-6161 Fax: (575) 393-0720
District II
811 S. First St., Artesia, NM 88210
Phone: (575) 748-1243 Fax: (575) 748-9720
District III
1060 Rio Brazos Road, Artesia, NM 88210
Phone: (505) 334-6178 Fax: (505) 334-6170
District IV
1220 S. St. Francis Dr., Santa Fe, NM 87504
Phone: (505) 476-3460 Fax: (505) 476-3462

State of New Mexico
Energy, Minerals & Natural Resources Department
OIL CONSERVATION DIVISION
1220 South St. Francis Dr.
Santa Fe, NM 87505

Form C-102
Revised August 1, 2011
Submit one copy to appropriate
District Office

☐ AMENDED REPORT

WELL LOCATION AND ACREAGE DEDICATION PLAT

¹ API Number 30-005-64241	² Pool Code 52770	³ Pool Name Round Tank; San Andres
⁴ Property Code 314080	⁵ Property Name PRINCE RUPERT FEDERAL	
⁶ OGRID No. 13837	⁷ Operator Name MACK ENERGY CORPORATION	⁸ Well Number 3H
		⁹ Elevation 3780.5

*** Surface Location**

UL or lot no.	Section	Township	Range	Lot Idn	Feet from the	North/South line	Feet from the	East/West line	County
O	17	15 S	29 E		330	SOUTH	2160	EAST	CHAVES

" Bottom Hole Location If Different From Surface

UL or lot no.	Section	Township	Range	Lot Idn	Feet from the	North/South line	Feet from the	East/West line	County
O	20	15 S	29 E		259	SOUTH	2267	EAST	CHAVES

¹⁰ Dedicated Acres	¹¹ Joint or Infill	¹² Consolidation Code	¹³ Order No.
40			

No allowable will be assigned to this completion until all interests have been consolidated or a non-standard unit has been approved by the division.

" OPERATOR CERTIFICATION
I hereby certify that the information contained herein is true and complete to the best of my knowledge and belief, and that this organization either owns a working interest or mineral interest in the land including the proposed bottom hole location or has a right to drill this well in this location pursuant to a contract with an owner of such a mineral or working interest, or to a voluntary pooling agreement or a compulsory pooling order heretofore entered by the division.

Signature: Deana Weaver Date: 5/9/17

Printed Name: Deana Weaver

E-mail Address: dweaver@mec.com

"SURVEYOR CERTIFICATION
I hereby certify that the well location shown on this plat was plotted from field notes of actual surveys made by me or under my supervision, and that the same is true and correct to the best of my belief.

SEPTEMBER 28, 2016 F. JARAMILLO
Date of Survey: SEPTEMBER 28, 2016

Signature: [Signature] Professional Surveyor
Certificate Number: 12797
SURVEY NO. 28688

DISTRICT I
1625 N. FRENCH DR., FROBBS, NM 88240

DISTRICT II
1301 W. GRAND AVENUE, ARTESIA, NM 88210

DISTRICT III
1000 RIO BRAZOS RD., AZTEC, NM 87410

DISTRICT IV
11885 S. ST. FRANCIS DR., SANTA FE, NM 87505

State of New Mexico
Energy, Minerals and Natural Resources Department

OIL CONSERVATION DIVISION
11885 SOUTH ST. FRANCIS DR.
Santa Fe, New Mexico 87505

Form C-102

Revised October 17, 2005
Submit to Appropriate District Office
State Lease - 4 Copies
Fee Lease - 3 Copies

WELL LOCATION AND ACREAGE DEDICATION PLAT

☐ AMENDED REPORT

API Number 30-005-64152	Pool Code 52770	Pool Name Round Tank; San Andres
Property Code 313516	Property Name Snow Lake Federal Com	Well Number 1
GRID No. 013837	Operator Name MACK ENERGY CORPORATION	Elevation 3697'

Surface Location

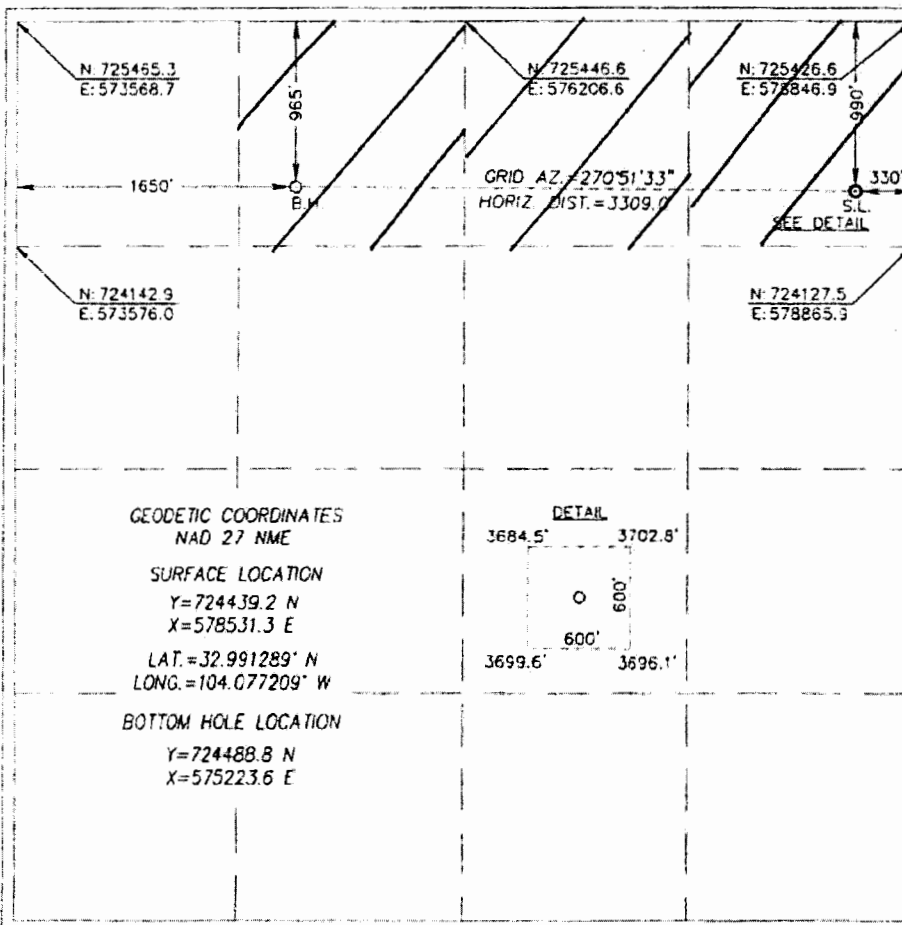
UT. or lot No.	Section	Township	Range	Lot Idn	Feet from the	North/South line	Feet from the	East/West line	County
A	25	15-S	28-E		990	NORTH	330	EAST	CHAVES

Bottom Hole Location If Different From Surface

UT. or lot No.	Section	Township	Range	Lot Idn	Feet from the	North/South line	Feet from the	East/West line	County
C	25	15-S	28-E		965	NORTH	1650	WEST	CHAVES

Dedicated Acres 120	Joint or Infill	Consolidation Code	Order No.
-------------------------------	-----------------	--------------------	-----------

NO ALLOWABLE WILL BE ASSIGNED TO THIS COMPLETION UNTIL ALL INTERESTS HAVE BEEN CONSOLIDATED
OR A NON-STANDARD UNIT HAS BEEN APPROVED BY THE DIVISION

	<p>OPERATOR CERTIFICATION</p> <p>I hereby certify that the information herein is true and complete to the best of my knowledge and belief, and that this organization either owns a working interest or unleased mineral interest in the land including the proposed bottom hole location or has a right to drill this well at this location pursuant to a contract with an owner of such mineral or working interest, or to a voluntary pooling agreement or a compulsory pooling order heretofore entered by the division.</p> <p><i>Jerry W. Sherrell</i> 8/17/11 Signature Date</p> <p>Jerry W. Sherrell Printed Name</p> <p>SURVEYOR CERTIFICATION</p> <p>I hereby certify that the well location shown on this plat was plotted from field notes of actual surveys made by me or under my supervision, and that the same is true and correct to the best of my belief.</p> <p>OCTOBER 24, 2008 Date Surveyed</p> <p>Signature & Seal of Professional Surveyor <i>Ronald J. Eidson</i> 11/05/2010 10.13.1677</p> <p>Certificate No. GARY G. EIDSON 12641 RONALD J. EIDSON 3239</p>
--	---

DISTRICT I
1625 N. FRENCH BLVD., BOHBS, NM 88210

DISTRICT II
1301 W. GRAND AVENUE, ARTESTA, NM 88210

DISTRICT III
1000 Rio Brazos Rd., Aztec, NM 87410

DISTRICT IV
1220 S. ST. FRANCIS DR., SANTA FE, NM 87503

State of New Mexico
Energy, Minerals and Natural Resources Department

OIL CONSERVATION DIVISION
1220 SOUTH ST. FRANCIS DR.
Santa Fe, New Mexico 87505

Form C-102
Revised October 12, 2005
Submit to Appropriate District Office
State Lease - 4 Copies
Fee Lease - 3 Copies

WELL LOCATION AND ACREAGE DEDICATION PLAT

☐ AMENDED REPORT

API Number 30-005-64096	Pool Code 52770	Pool Name Round Tank; San Andres
Property Code 37616	Property Name WHITEHORSE FEDERAL	Well Number 1
GRID No. 013837	Operator Name MACK ENERGY CORPORATION	Elevation 3737'

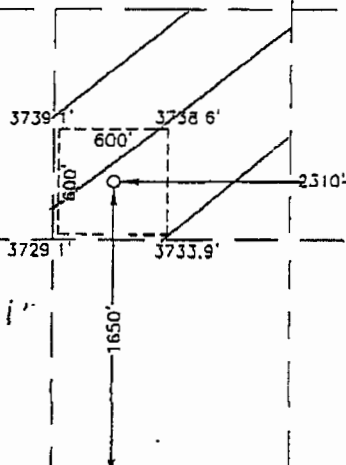
Surface Location

UL or lot No.	Section	Township	Range	Lot Idn	Feet from the	North/South line	Feet from the	East/West line	County
J	30	15-S	29-E		1650	SOUTH	2310	EAST	CHAVES

Bottom Hole Location If Different From Surface

UL or lot No.	Section	Township	Range	Lot Idn	Feet from the	North/South line	Feet from the	East/West line	County
Dedicated Acres 40	Joint or Infill	Consolidation Code	Order No.						

NO ALLOWABLE WILL BE ASSIGNED TO THIS COMPLETION UNTIL ALL INTERESTS HAVE BEEN CONSOLIDATED
OR A NON-STANDARD UNIT HAS BEEN APPROVED BY THE DIVISION

<p>GEODETIC COORDINATES NAD 27 NME</p> <p>Y=721853.9 N X=581872.4 E</p> <p>LAT.=32.984160° N LONG.=104.066336° W</p> 	<p>OPERATOR CERTIFICATION</p> <p>I hereby certify that the information herein is true and complete to the best of my knowledge and belief, and that this organization either owns a working interest or unleased mineral interest in the land including the proposed bottom hole location or has a right to drill this well at this location pursuant to a contract with an owner of such mineral or working interest, or to a voluntary pooling agreement or a compulsory pooling order heretofore entered by the division.</p> <p><i>Jerry W. Sherrell</i> 12-10-08 Signature Date</p> <p>Jerry W. Sherrell Printed Name</p>
	<p>SURVEYOR CERTIFICATION</p> <p>I hereby certify that the well location shown on this plat was plotted from field notes of actual surveys made by me or under my supervision, and that the same is true and correct to the best of my belief.</p> <p>OCTOBER 21, 2008 Date Surveyed</p> <p><i>Ronald J. Eidson</i> Signature</p> <p>Ronald J. Eidson Professional Surveyor</p> <p>3239 18.11.1822</p>
	<p>Certificate No. 12641 EIDSON 3239</p>

State of New Mexico
Energy, Minerals & Natural Resources Department
OIL CONSERVATION DIVISION
1220 South St. Francis Dr.
Santa Fe, NM 87505

Form C-102
Revised August 1, 2011
Submit one copy to appropriate
District Office
☐ AMENDED REPORT

* API Number 30-005-64162		* Pool Code 52770		* Pool Name Round Tank; San Andres					
* Property Code 37558		* Property Name VICTORIA FEDERAL				* Well Number 1Y			
* OGRID No. 13837		* Operator Name MACK ENERGY CORPORATION				* Elevation 3724.4			
* Surface Location									
UL or lot no. 4	Section 19	Township 15 S	Range 29 E	Lot Idn	Feet from the 330	North/South line SOUTH	Feet from the 350	East/West line WEST	County EDDY
* Bottom Hole Location If Different From Surface									
UL or lot no.	Section	Township	Range	Lot Idn	Feet from the	North/South line	Feet from the	East/West line	County
** Dedicated Area 40.31		** Joint or Infill		** Consolidation Code		** Order No.			

N89°22'23"E	2678.39 FT	N89°22'23"E	2678.39 FT
<p>NE CORNER SEC. 19 LAT. = 33.0084412°N LONG. = 104.0761650°W NMSP EAST (FT) N = 730691.71 E = 578836.12</p>	ENH	<p>NE CORNER SEC. 19 LAT. = 33.0085650°N LONG. = 104.0586960°W NMSP EAST (FT) N = 730738.79 E = 584191.20</p>	<p>SC000127E 2638.32 FT</p>
<p>W/4 CORNER SEC. 19 LAT. = 33.0012233°N LONG. = 104.0761728°W NMSP EAST (FT) N = 728054.20 E = 578840.13</p>	<p>NOTE: LATITUDE AND LONGITUDE COORDINATES ARE SHOWN USING THE NORTH AMERICAN DATUM OF 1927 (NAD27), AND ARE IN DECIMAL DEGREE FORMAT.</p>	<p>L/4 CORNER SEC. 19 LAT. = 33.0013132°N LONG. = 104.0587156°W NMSP EAST (FT) N = 728101.18 E = 584192.09</p>	<p>SC01271E 2638.37 FT</p>
<p>W/4 CORNER SEC. 19 LAT. = 33.0012233°N LONG. = 104.0761728°W NMSP EAST (FT) N = 728054.20 E = 578840.13</p>	<p>VICTORIA FEDERAL #1Y ELEV. = 3724.4' LAT. = 32.9949111°N (NAD27) LONG. = 104.0750242°W NMSP EAST (FT) N = 725758.57 E = 579196.38</p>	<p>SE CORNER SEC. 19 LAT. = 32.9940653°N LONG. = 104.0587097°W NMSP EAST (FT) N = 725462.54 E = 584200.79</p>	<p>SC01271E 2638.37 FT</p>
<p>W/4 CORNER SEC. 19 LAT. = 33.0012233°N LONG. = 104.0761728°W NMSP EAST (FT) N = 728054.20 E = 578840.13</p>			

589°36'12"W 2677.66 FT

589°36'12"W 2677.66 FT

"SURVEYOR CERTIFICATION"

I hereby certify that the information contained herein is true and complete to the best of my knowledge and belief, and that this organization either owns or holds interest in or has a right to drill this well on this location pursuant to a contract with an owner of the land mineral or leasing interest, or is a contractor, pending agreement or a completed pending under the terms provided by the division.

Jerry W. Sherrell 6-24-2013
 Signature Date
Jerry W. Sherrell
 Printed Name
jerry@emec.com
 E-mail Address

"SURVEYOR CERTIFICATION"
 I hereby certify that the well location shown on this plat was placed from field notes of actual surveys made by me or under my supervision, and that the same is true and correct to the best of my belief.
 JUNE 21, 2013
 Date of Survey
Jerry W. Sherrell
 State of Texas, Surveyor and Surveyor
 Certificate Number: 113455, EXPIRATION DATE: 12/31/2017
 EXPIRATION DATE: 12/31/2017

DISTRICT I

1026 N. FRENCH DR., HOBBS, NM 88240

DISTRICT II

1301 W. GRAND AVENUE, ARTESIA, NM 88210

DISTRICT III

1000 Rio Brazos Rd., Aztec, NM 87410

DISTRICT IV

1220 S. ST. FRANCIS DR., SANTA FE, NM 87505

State of New Mexico

Energy, Minerals and Natural Resources Department

OIL CONSERVATION DIVISION

1220 SOUTH ST. FRANCIS DR.

Santa Fe, New Mexico 87505

Form C-102

Revised October 12, 2005

Submit to Appropriate District Office

State Lease - 4 Copies

Fee Lease - 3 Copies

WELL LOCATION AND ACREAGE DEDICATION PLAT

☐ AMENDED REPORT

API Number 30.005-64160	Pool Code 52770	Pool Name Round Tank; San Andres
Property Code 374558	Property Name VICTORIA FEDERAL	Well Number 2
GRID No. 013837	Operator Name MACK ENERGY CORPORATION	Elevation 3731'

Surface Location

UL or lot No.	Section	Township	Range	Lot Idn	Feet from the	North/South line	Feet from the	East/West line	County
3	19	15-S	29-E		1650	SOUTH	330	WEST	CHAVES

Bottom Hole Location If Different From Surface

UL or lot No.	Section	Township	Range	Lot Idn	Feet from the	North/South line	Feet from the	East/West line	County
Dedicated Acres 40.29		Joint or Infill		Consolidation Code		Order No.			

NO ALLOWABLE WILL BE ASSIGNED TO THIS COMPLETION UNTIL ALL INTERESTS HAVE BEEN CONSOLIDATED
OR A NON-STANDARD UNIT HAS BEEN APPROVED BY THE DIVISION

<p>LOT 1</p> <p>LOT 2</p> <p>LOT 3</p> <p>LOT 4</p> <p>330'</p> <p>1650'</p> <p>3729.7'</p> <p>3732.5'</p> <p>3729.2'</p> <p>3736.6'</p> <p>600'</p> <p>600'</p> <p>SEE DETAIL</p> <p>SEE DETAIL</p> <p>GEODETIC COORDINATES NAD 27 NME</p> <p>Y=727078.3 N X=579172.6 E</p> <p>LAT.=32.998539° N LONG.=104.075096° W</p>	<p>OPERATOR CERTIFICATION</p> <p>I hereby certify that the information herein is true and complete to the best of my knowledge and belief, and that this organization either owns a working interest or unleased mineral interest in the land including the proposed bottom hole location or has a right to drill this well at this location pursuant to a contract with an owner of such mineral or working interest, or to a voluntary pooling agreement or a compulsory pooling order heretofore entered by the division.</p> <p><i>Jerry W. Sherrell</i> 10/8/08 Signature Date</p> <p>Jerry W. Sherrell Printed Name</p> <p>SURVEYOR CERTIFICATION</p> <p>I hereby certify that the well location shown on this plat was plotted from field notes of actual surveys made by me or under my supervision, and that the same is true and correct to the best of my belief.</p> <p>SEPTEMBER 12, 2008 Date Surveyed</p> <p>Signature & Seal of Professional Surveyor <i>Ronald J. Eidson</i> 9/22/08 08114480</p> <p>Certificate No. GARY EIDSON 12041 RONALD J. EIDSON 3239</p>
---	--

DISTRICT I
1625 N. FRENCH DR., BOBBS, NM 88240

DISTRICT II
1301 W. GRAND AVENUE, ARTESIA, NM 88210

DISTRICT III
1000 Rio Brazos Rd., Aztec, NM 87410

DISTRICT IV
1220 S. ST. FRANCIS DR., SANTA FE, NM 87505

State of New Mexico
Energy, Minerals and Natural Resources Department

OIL CONSERVATION DIVISION
1220 SOUTH ST. FRANCIS DR.
Santa Fe, New Mexico 87505

Form C-102
Revised October 12, 2005
Submit to Appropriate District Office
State Lease - 4 Copies
Fee Lease - 3 Copies

WELL LOCATION AND ACREAGE DEDICATION PLAT

☐ AMENDED REPORT

API Number 30-005-64188	Pool Code 52770	Pool Name Round Tank: San Andres
Property Code 37558	Property Name VICTORIA FEDERAL	Well Number 4
OGRID No. 013837	Operator Name MACK ENERGY CORPORATION	Elevation 3741'

Surface Location

UL or lot No.	Section	Township	Range	Lot Idn	Feet from the	North/South line	Feet from the	East/West line	County
G	30	15-S	29-E		2310	NORTH	2310	EAST	CHAVES

Bottom Hole Location If Different From Surface

UL or lot No.	Section	Township	Range	Lot Idn	Feet from the	North/South line	Feet from the	East/West line	County
Dedicated Acres 40		Joint or Infill	Consolidation Code	Order No.					

NO ALLOWABLE WILL BE ASSIGNED TO THIS COMPLETION UNTIL ALL INTERESTS HAVE BEEN CONSOLIDATED
OR A NON-STANDARD UNIT HAS BEEN APPROVED BY THE DIVISION

<p>GEODETIC COORDINATES NAD 27 NME Y=723138.2 N X=581895.5 E LAT.=32.987690° N LONG.=104.066248° W</p>	<p>OPERATOR CERTIFICATION</p> <p>I hereby certify that the information herein is true and complete to the best of my knowledge and belief, and that this organization either owns a working interest or unleased mineral interest in the land including the proposed bottom hole location or has a right to drill this well at this location pursuant to a contract with an owner of such mineral or working interest, or to a voluntary pooling agreement or a compulsory pooling order heretofore entered by the division.</p> <p><i>Jerry W. Sherrell</i> 12-9-08 Signature Date Jerry W. Sherrell Printed Name</p> <p>SURVEYOR CERTIFICATION</p> <p>I hereby certify that the well location shown on this plat was plotted from field notes of actual surveys made by me or under my supervision, and that the same is true and correct to the best of my belief.</p> <p>OCTOBER 22, 2008</p> <p>Date Surveyed JC Signature & Seal of Professional Surveyor <i>Ronald J. Eidson</i> 10/28/09 08.11.1823 Certificate No. CARL EIDSON 12841 RONALD J. EIDSON 3239</p>
--	--

District I
1025 N. English Dr., El Paso, NM 88201
Phone: (915) 593-1000 Fax: (915) 593-1020
District II
1015 N. 1st St., Artesia, NM 88201
Phone: (505) 763-1731 Fax: (505) 763-1720
District III
1000 Red Bluffs Road, Artesia, NM 88201
Phone: (505) 333-6475 Fax: (505) 333-6470
District IV
1220 S. St. Francis Dr., Santa Fe, NM 87505
Phone: (505) 476-3460 Fax: (505) 476-3462

State of New Mexico
Energy, Minerals & Natural Resources Department
OIL CONSERVATION DIVISION
1220 South St. Francis Dr.
Santa Fe, NM 87505

Form C-102
Revised August 1, 2011
Submit one copy to appropriate
District Office

☐ AMENDED REPORT

WELL LOCATION AND ACREAGE DEDICATION PLAT

1. API Number 30-005-64208		2. Pool Code 52770		3. Pool Name Round Tank; San Andres	
4. Property Code 37000558		5. Property Name VICTORIA FEDERAL			6. Well Number 5
7. OGRID No. 13837		8. Operator Name MACK ENERGY CORPORATION			9. Elevation 3737.1
10. Surface Location					
U. I. or lot no. 2	Section 19	Township 15 S	Range 29 E	Lot Idn 2285	Feet from the North/South line NORTH
			Feet from the East/West line 230	County CHAVES	
11. Bottom Hole Location If Different From Surface					
U. I. or lot no.	Section	Township	Range	Lot Idn	Feet from the North/South line
			Feet from the East/West line	County	
12. Dedicated Acres 40		13. Joint or Infill		14. Consolidation Code	
				15. Order No.	

No allowable will be assigned to this completion until all interests have been consolidated or a non-standard unit has been approved by the division.

<p>N89°22'23"E 2678.40 FT</p> <p>NW CORNER SEC. 19 LAT. = 33.0055533°N LONG. = 104.0766764°W NMSP EAST (FT) N = 730744.38 E = 620015.02</p> <p>NE CORNER SEC. 19 LAT. = 33.0086773°N LONG. = 104.0592079°W NMSP EAST (FT) N = 730802.98 E = 625370.10</p> <p>W/4 CORNER SEC. 19 LAT. = 33.0013359°N LONG. = 104.0766842°W NMSP EAST (FT) N = 728112.34 E = 620019.04</p> <p>E/4 CORNER SEC. 19 LAT. = 33.0014276°N LONG. = 104.0592265°W NMSP EAST (FT) N = 728165.36 E = 625371.02</p> <p>SW CORNER SEC. 19 LAT. = 32.9944157°N LONG. = 104.0766827°W NMSP EAST (FT) N = 728190.64 E = 620025.47</p> <p>SE CORNER SEC. 19 LAT. = 32.9911772°N LONG. = 104.0592258°W NMSP EAST (FT) N = 725627.89 E = 625370.72</p> <p>NOTE: LATITUDE AND LONGITUDE COORDINATES ARE SHOWN USING THE NORTH AMERICAN DATUM OF 1983 (NAD83). LISTED NEW MEXICO STATE PLANE EAST COORDINATES ARE GRID (NAD83). BASES OF BEARING AND DISTANCES USED ARE NEW MEXICO STATE PLANE EAST COORDINATES MODIFIED TO THE SURFACE.</p> <p>VICTORIA FEDERAL #5 ELEV. = 3737.1' LAT. = 33.0022797°N (NAD83) LONG. = 104.0759331°W NMSP EAST (FT) N = 728462.41 E = 620248.46</p> <p>SUP. ACQ. LOCATION</p>		<p>1. OPERATOR CERTIFICATION</p> <p>I hereby certify that the information contained herein is true and complete to the best of my knowledge and belief, and that this information either covers a working interest or oil and gas and mineral interest in the land to which the proposed bottom hole location or has a right to drill any well it may be deemed prudent to a contract with an owner of a non-owned working interest or to a voluntary pooling agreement or a compulsory pooling order as authorized by the division.</p> <p><i>Jerry W. Sherrell</i> 2-25-2014 Signature Date</p> <p>Jerry W. Sherrell Printed Name</p> <p>jerry@mec.com E-mail Address</p> <p>2. SURVEYOR CERTIFICATION</p> <p>I hereby certify that the well location shown on this plat was plotted from field notes of actual surveys made by me or under my supervision, and that the same is true and correct to the best of my belief.</p> <p>FEBRUARY 17, 2014 Date of Survey</p> <p><i>[Signature]</i> Signature and Seal of Professional Surveyor</p> <p>Certificate Number EIL 150001 EPL 00010105 12 00 SURVEY NO. 0014</p>
---	--	---

SCANNER

DISTRICT I
1623 N. FRENCH DR., HOBECK, NM 87240

DISTRICT II
1201 W GRAND AVENUE, ARTESIA, NM 86210

DISTRICT III
1000 Rio Brazos Rd., Aztec, NM 87410

DISTRICT IV
1220 S. FRANCIS DR., SANTA FE, NM 87505

State of New Mexico
Energy, Minerals and Natural Resources Department

OIL CONSERVATION DIVISION
1220 SOUTH ST. FRANCIS DR.
Santa Fe, New Mexico 87505

RECEIVED

MAR 26 2008

Form C-102
Revised October 12, 2005
Submit to Appropriate District Office
State Lease - 4 Copies
Fee Lease - 3 Copies

WELL LOCATION AND ACREAGE DEDICATION PLAT

☐ AMENDED REPORT

API Number 30-005-64032	Pool Code 52770	Pool Name Round Tank; San Andres
Property Code 37261	Property Name PACKERS FEDERAL	Well Number 1
GRID No. 013837	Operator Name MACK ENERGY CORPORATION	Elevation 3779'

Surface Location

UL or lot No.	Section	Township	Range	Lot Idn	Feet from the	North/South line	Feet from the	East/West line	County
H	29	15-S	29-E		1675	NORTH	330	EAST	CHAVES

Bottom Hole Location If Different From Surface

UL or lot No.	Section	Township	Range	Lot Idn	Feet from the	North/South line	Feet from the	East/West line	County
G	29	15-S	29-E		1675	NORTH	2310	EAST	CHAVES

Dedicated Acres	Joint or Infill	Consolidation Code	Order No.
80			

NO ALLOWABLE WILL BE ASSIGNED TO THIS COMPLETION UNTIL ALL INTERESTS HAVE BEEN CONSOLIDATED
OR A NON-STANDARD UNIT HAS BEEN APPROVED BY THE DIVISION

<p>BOTTOM HOLE LOCATION Y=723797.5 N X=587152.4 E</p> <p>SEE DETAIL</p> <p>3772 9' 3777 8' 3785 5' 3791 2'</p> <p>500' 600'</p> <p>1675' 1675' 2310' 330'</p> <p>GRD AZ = 269° 55' 36" HORZ DIST = 1980.0'</p> <p>GEODETIC COORDINATES NAD 27 NME SURFACE LOCATION Y=723801.1 N X=589132.1 E</p> <p>LAT. = 32.989460° N LONG. = 104.042641° W</p>	<p>OPERATOR CERTIFICATION</p> <p>I hereby certify that the information herein is true and complete to the best of my knowledge and belief, and that this organization either owns a working interest or unleased mineral interest in the land including the proposed bottom hole location or has a right to drill this well at this location pursuant to a contract with an owner of such mineral or working interest, or to a voluntary pooling agreement or a compulsory pooling order heretofore entered by the division.</p> <p><i>Jerry W. Sherrell</i> 4/3/08 Signature Date Jerry W. Sherrell Printed Name</p> <p>SURVEYOR CERTIFICATION</p> <p>I hereby certify that the well location shown on this plat was plotted from field notes of actual surveys made by me or under my supervision, and that the same is true and correct to the best of my belief.</p> <p>RONALD J. EIDSON NEW MEXICO Professional Surveyor 3239 Date Surveyed Signature & Seal of Professional Surveyor 5/6/08 Certificate No. GARY EIDSON 12841 RONALD J. EIDSON 3239</p>
---	---

District I
1625 N. French Dr., Hobbs, NM 88240
Phone:(505) 393-6161 Fax:(505) 393-0720

District II
1301 W. Grand Ave., Artesia, NM 88210
Phone:(505) 748-1283 Fax:(505) 748-9720

District III
1000 Rio Brazos Rd., Aztec, NM 87410
Phone:(505) 334-6178 Fax:(505) 334-6170

District IV
1220 S. St Francis Dr., Santa Fe, NM 87505
Phone:(505) 476-3470 Fax:(505) 476-3462

State of New Mexico
Energy, Minerals and Natural Resources

Form C-102
Permit 77121

Oil Conservation Division
1220 S. St Francis Dr.
Santa Fe, NM 87505

WELL LOCATION AND ACREAGE DEDICATION PLAT

1. API Number 30-05-64027	2. Pool Code 52770	3. Pool Name ROUND TANK, SAN ANDRES
4. Property Code 37215	5. Property Name ESKIMO STATE	6. Well No. 001
7. OGRID No. 13837	8. Operator Name MACK ENERGY CORP	9. Elevation 3730

10. Surface Location

UL - Lot N	Section 19	Township 15S	Range 29E	Lot Idn	Feet From 330	N/S Line S	Feet From 1650	E/W Line W	County CHAVES
---------------	---------------	-----------------	--------------	---------	------------------	---------------	-------------------	---------------	------------------

11. Bottom Hole Location If Different From Surface

UL - Lot	Section	Township	Range	Lot Idn	Feet From	N/S Line	Feet From	E/W Line	County
12. Dedicated Acres 40.00	13. Joint or Infill			14. Consolidation Code			15. Order No.		

**NO ALLOWABLE WILL BE ASSIGNED TO THIS COMPLETION UNTIL ALL INTERESTS HAVE BEEN
CONSOLIDATED OR A NON-STANDARD UNIT HAS BEEN APPROVED BY THE DIVISION**

OPERATOR CERTIFICATION

I hereby certify that the information contained herein is true and complete to the best of my knowledge and belief, and that this organization either owns a working interest or unleased mineral interest in the land including the proposed bottom hole location(s) or has a right to drill this well at this location pursuant to a contract with an owner of such a mineral or working interest, or to a voluntary pooling agreement or a compulsory pooling order heretofore entered by the division.

E-Signed By: Jerry Sherrell
Title: Production Clerk
Date: 6/17/2008

SURVEYOR CERTIFICATION

I hereby certify that the well location shown on this plat was plotted from field notes of actual surveys made by me or under my supervision, and that the same is true and correct to the best of my belief.

Surveyed By: Ronald Eidson
Date of Survey: 6/16/2008
Certificate Number: 3239

District I
 1625 N. French Dr., Hobbs, NM 88240
 Phone:(505) 393-6161 Fax:(505) 393-0720

District II
 1301 W. Grand Ave., Artesia, NM 88210
 Phone:(505) 748-1283 Fax:(505) 748-9720

District III
 1000 Rio Brazos Rd., Aztec, NM 87410
 Phone:(505) 334-6178 Fax:(505) 334-6170

District IV
 1220 S. St Francis Dr., Santa Fe, NM 87505
 Phone:(505) 476-3470 Fax:(505) 476-3462

State of New Mexico
Energy, Minerals and Natural Resources
Oil Conservation Division
1220 S. St Francis Dr.
Santa Fe, NM 87505

Form C-102
 Permit 77127

WELL LOCATION AND ACREAGE DEDICATION PLAT

1. API Number 30-05-64026	2. Pool Code 52770	3. Pool Name ROUND TANK, SAN ANDRES
4. Property Code 37215	5. Property Name ESKIMO STATE	6. Well No. 002
7. OGRID No. 13837	8. Operator Name MACK ENERGY CORP	9. Elevation 3729

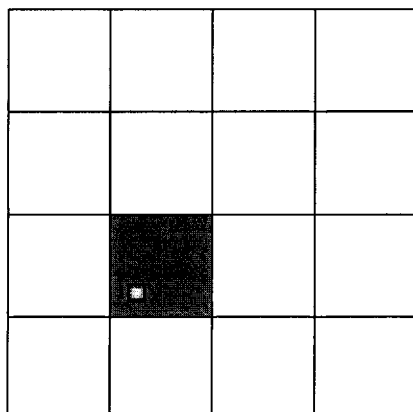
10. Surface Location

UL - Lot	Section	Township	Range	Lot Idn	Feet From	N/S Line	Feet From	E/W Line	County
K	19	15S	29E		1650	S	1650	W	CHAVES

11. Bottom Hole Location If Different From Surface

UL - Lot	Section	Township	Range	Lot Idn	Feet From	N/S Line	Feet From	E/W Line	County
12. Dedicated Acres 40.00		13. Joint or Infill		14. Consolidation Code		15. Order No.			

NO ALLOWABLE WILL BE ASSIGNED TO THIS COMPLETION UNTIL ALL INTERESTS HAVE BEEN CONSOLIDATED OR A NON-STANDARD UNIT HAS BEEN APPROVED BY THE DIVISION



OPERATOR CERTIFICATION

I hereby certify that the information contained herein is true and complete to the best of my knowledge and belief, and that this organization either owns a working interest or unleased mineral interest in the land including the proposed bottom hole location(s) or has a right to drill this well at this location pursuant to a contract with an owner of such a mineral or working interest, or to a voluntary pooling agreement or a compulsory pooling order heretofore entered by the division.

E-Signed By: Jerry Sherrell
 Title: Production Clerk
 Date: 6/17/2008

SURVEYOR CERTIFICATION

I hereby certify that the well location shown on this plat was plotted from field notes of actual surveys made by me or under my supervision, and that the same is true and correct to the best of my belief.

Surveyed By: Ronald Eidson
 Date of Survey: 6/16/2008
 Certificate Number: 3239

District I
1625 N. French Dr., Hobbs, NM 88240
Phone:(505) 393-6161 Fax:(505) 393-0720

District II
1301 W. Grand Ave., Artesia, NM 88210
Phone:(505) 748-1283 Fax:(505) 748-9720

District III
1000 Rio Brazos Rd., Aztec, NM 87410
Phone:(505) 334-6178 Fax:(505) 334-6170

District IV
1220 S. St Francis Dr., Santa Fe, NM 87505
Phone:(505) 476-3470 Fax:(505) 476-3462

State of New Mexico
Energy, Minerals and Natural Resources

Oil Conservation Division
1220 S. St Francis Dr.
Santa Fe, NM 87505

Form C-102
Permit 81718

WELL LOCATION AND ACREAGE DEDICATION PLAT

1. API Number 30-05-64049	2. Pool Code 52770	3. Pool Name ROUND TANK, SAN ANDRES
4. Property Code 37215	5. Property Name ESKIMO STATE	6. Well No. 003
7. OGRID No. 13837	8. Operator Name MACK ENERGY CORP	9. Elevation 3715

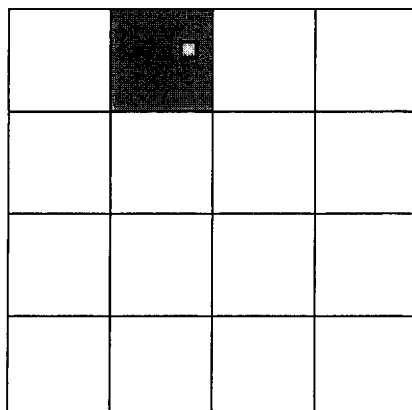
10. Surface Location

UL - Lot C	Section 30	Township 15S	Range 29E	Lot Idn	Feet From 505	N/S Line N	Feet From 2310	E/W Line W	County CHAVES
---------------	---------------	-----------------	--------------	---------	------------------	---------------	-------------------	---------------	------------------

11. Bottom Hole Location If Different From Surface

UL - Lot	Section	Township	Range	Lot Idn	Feet From	N/S Line	Feet From	E/W Line	County
12. Dedicated Acres 40.00	13. Joint or Infill			14. Consolidation Code			15. Order No.		

NO ALLOWABLE WILL BE ASSIGNED TO THIS COMPLETION UNTIL ALL INTERESTS HAVE BEEN CONSOLIDATED OR A NON-STANDARD UNIT HAS BEEN APPROVED BY THE DIVISION



OPERATOR CERTIFICATION

I hereby certify that the information contained herein is true and complete to the best of my knowledge and belief, and that this organization either owns a working interest or unleased mineral interest in the land including the proposed bottom hole location(s) or has a right to drill this well at this location pursuant to a contract with an owner of such a mineral or working interest, or to a voluntary pooling agreement or a compulsory pooling order heretofore entered by the division.

E-Signed By: Jerry Sherrell
Title: Production Clerk
Date: 9/10/2008

SURVEYOR CERTIFICATION

I hereby certify that the well location shown on this plat was plotted from field notes of actual surveys made by me or under my supervision, and that the same is true and correct to the best of my belief.

Surveyed By: Ronald Eidson
Date of Survey: 9/10/2008
Certificate Number: 3239

District I

1625 N. French Dr., Hobbs, NM 88240
 Phone:(505) 393-6161 Fax:(505) 393-0720

District II

1301 W. Grand Ave., Artesia, NM 88210
 Phone:(505) 748-1283 Fax:(505) 748-9720

District III

1000 Rio Brazos Rd., Aztec, NM 87410
 Phone:(505) 334-6178 Fax:(505) 334-6170

District IV

1220 S. St Francis Dr., Santa Fe, NM 87505
 Phone:(505) 476-3470 Fax:(505) 476-3462

State of New Mexico

Form C-102
 Permit 81721

Energy, Minerals and Natural Resources**Oil Conservation Division**

**1220 S. St Francis Dr.
 Santa Fe, NM 87505**

WELL LOCATION AND ACREAGE DEDICATION PLAT

1. API Number 30-05-64050	2. Pool Code 52770	3. Pool Name ROUND TANK; SAN ANDRES
4. Property Code 37215	5. Property Name ESKIMO STATE	6. Well No. 004
7. OGRID No. 13837	8. Operator Name MACK ENERGY CORP	9. Elevation 3719

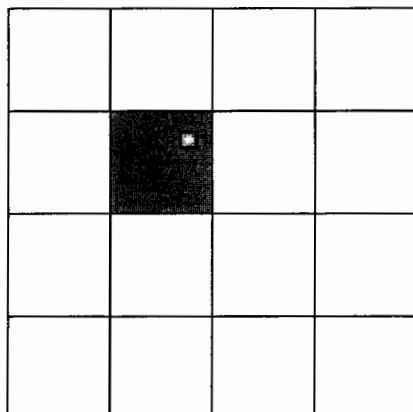
10. Surface Location

UL - Lot F	Section 30	Township 15S	Range 29E	Lot Idn	Feet From 1675	N/S Line N	Feet From 2310	E/W Line W	County CHAVES
---------------	---------------	-----------------	--------------	---------	-------------------	---------------	-------------------	---------------	------------------

11. Bottom Hole Location If Different From Surface

UL - Lot	Section	Township	Range	Lot Idn	Feet From	N/S Line	Feet From	E/W Line	County
12. Dedicated Acres 40.00	13. Joint or Infill	14. Consolidation Code	15. Order No.						

NO ALLOWABLE WILL BE ASSIGNED TO THIS COMPLETION UNTIL ALL INTERESTS HAVE BEEN CONSOLIDATED OR A NON-STANDARD UNIT HAS BEEN APPROVED BY THE DIVISION

**OPERATOR CERTIFICATION**

I hereby certify that the information contained herein is true and complete to the best of my knowledge and belief, and that this organization either owns a working interest or unleased mineral interest in the land including the proposed bottom hole location(s) or has a right to drill this well at this location pursuant to a contract with an owner of such a mineral or working interest, or to a voluntary pooling agreement or a compulsory pooling order heretofore entered by the division.

E-Signed By: Jerry Sherrell
 Title: Production Clerk
 Date: 9/10/2008

SURVEYOR CERTIFICATION

I hereby certify that the well location shown on this plat was plotted from field notes of actual surveys made by me or under my supervision, and that the same is true and correct to the best of my belief.

Surveyed By: Ronald Eidson
 Date of Survey: 9/10/2008
 Certificate Number: 3239

District I

1625 N. French Dr., Hobbs, NM 88240
 Phone:(505) 393-6161 Fax:(505) 393-0720

District II

1301 W. Grand Ave., Artesia, NM 88210
 Phone:(505) 748-1283 Fax:(505) 748-9720

District III

1000 Rio Brazos Rd., Aztec, NM 87410
 Phone:(505) 334-6178 Fax:(505) 334-6170

District IV

1220 S. St Francis Dr., Santa Fe, NM 87505
 Phone:(505) 476-3470 Fax:(505) 476-3462

State of New Mexico

Form C-102
 Permit 81722

Energy, Minerals and Natural Resources**Oil Conservation Division**

**1220 S. St Francis Dr.
 Santa Fe, NM 87505**

WELL LOCATION AND ACREAGE DEDICATION PLAT

1. API Number 30-05-64051	2. Pool Code 52770	3. Pool Name ROUND TANK;SAN ANDRES
4. Property Code 37215	5. Property Name ESKIMO STATE	6. Well No. 005
7. OGRID No. 13837	8. Operator Name MACK ENERGY CORP	9. Elevation 3727

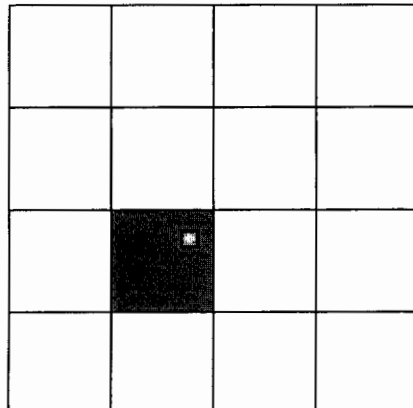
10. Surface Location

UL - Lot	Section	Township	Range	Lot Idn	Feet From	N/S Line	Feet From	E/W Line	County
K	30	15S	29E		2285	S	2310	W	CHAVES

11. Bottom Hole Location If Different From Surface

UL - Lot	Section	Township	Range	Lot Idn	Feet From	N/S Line	Feet From	E/W Line	County
12. Dedicated Acres 40.00	13. Joint or Infill	14. Consolidation Code	15. Order No.						

NO ALLOWABLE WILL BE ASSIGNED TO THIS COMPLETION UNTIL ALL INTERESTS HAVE BEEN CONSOLIDATED OR A NON-STANDARD UNIT HAS BEEN APPROVED BY THE DIVISION

**OPERATOR CERTIFICATION**

I hereby certify that the information contained herein is true and complete to the best of my knowledge and belief, and that this organization either owns a working interest or unleased mineral interest in the land including the proposed bottom hole location(s) or has a right to drill this well at this location pursuant to a contract with an owner of such a mineral or working interest, or to a voluntary pooling agreement or a compulsory pooling order heretofore entered by the division.

E-Signed By: Jerry Sherrell
 Title: Production Clerk
 Date: 9/10/2008

SURVEYOR CERTIFICATION

I hereby certify that the well location shown on this plat was plotted from field notes of actual surveys made by me or under my supervision, and that the same is true and correct to the best of my belief.

Surveyed By: Ronald Eidson
 Date of Survey: 9/10/2008
 Certificate Number: 3239

District I

1625 N. French Dr., Hobbs, NM 88240
 Phone:(505) 393-6161 Fax:(505) 393-0720

District II

1301 W. Grand Ave., Artesia, NM 88210
 Phone:(505) 748-1283 Fax:(505) 748-9720

District III

1000 Rio Brazos Rd., Aztec, NM 87410
 Phone:(505) 334-6178 Fax:(505) 334-6170

District IV

1220 S. St Francis Dr., Santa Fe, NM 87505
 Phone:(505) 476-3470 Fax:(505) 476-3462

State of New Mexico

Form C-102
 Permit 81724

Energy, Minerals and Natural Resources**Oil Conservation Division**

**1220 S. St Francis Dr.
 Santa Fe, NM 87505**

WELL LOCATION AND ACREAGE DEDICATION PLAT

1. API Number 30-05-64052	2. Pool Code 52770	3. Pool Name ROUND TANK, SAN ANDRES
4. Property Code 37215	5. Property Name ESKIMO STATE	6. Well No. 006
7. OGRID No. 13837	8. Operator Name MACK ENERGY CORP	9. Elevation 3721

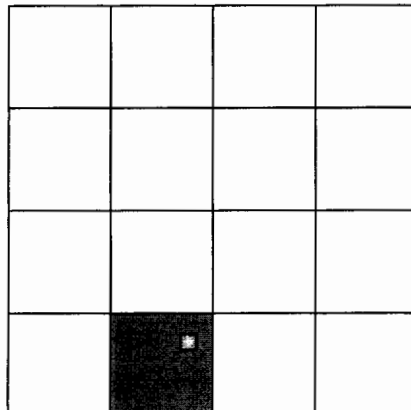
10. Surface Location

UL - Lot	Section	Township	Range	Lot Idn	Feet From	N/S Line	Feet From	E/W Line	County
N	30	15S	29E		965	S	2310	W	CHAVES

11. Bottom Hole Location If Different From Surface

UL - Lot	Section	Township	Range	Lot Idn	Feet From	N/S Line	Feet From	E/W Line	County
12. Dedicated Acres 40.00	13. Joint or Infill	14. Consolidation Code	15. Order No.						

NO ALLOWABLE WILL BE ASSIGNED TO THIS COMPLETION UNTIL ALL INTERESTS HAVE BEEN CONSOLIDATED OR A NON-STANDARD UNIT HAS BEEN APPROVED BY THE DIVISION

**OPERATOR CERTIFICATION**

I hereby certify that the information contained herein is true and complete to the best of my knowledge and belief, and that this organization either owns a working interest or unleased mineral interest in the land including the proposed bottom hole location(s) or has a right to drill this well at this location pursuant to a contract with an owner of such a mineral or working interest, or to a voluntary pooling agreement or a compulsory pooling order heretofore entered by the division.

E-Signed By: Jerry Sherrell
 Title: Production Clerk
 Date: 9/10/2008

SURVEYOR CERTIFICATION

I hereby certify that the well location shown on this plat was plotted from field notes of actual surveys made by me or under my supervision, and that the same is true and correct to the best of my belief.

Surveyed By: Ronald Eidson
 Date of Survey: 9/10/2008
 Certificate Number: 3239

District I
1625 N. French Dr., Hobbs, NM 88240
Phone:(505) 393-6161 Fax:(505) 393-0720

District II
1301 W. Grand Ave., Artesia, NM 88210
Phone:(505) 748-1283 Fax:(505) 748-9720

District III
1000 Rio Brazos Rd., Aztec, NM 87410
Phone:(505) 334-6178 Fax:(505) 334-6170

District IV
1220 S. St Francis Dr., Santa Fe, NM 87505
Phone:(505) 476-3470 Fax:(505) 476-3462

State of New Mexico
Energy, Minerals and Natural Resources
Oil Conservation Division
1220 S. St Francis Dr.
Santa Fe, NM 87505

Form C-102
Permit 81843

WELL LOCATION AND ACREAGE DEDICATION PLAT

1. API Number 30-05-64053	2. Pool Code 52770	3. Pool Name ROUND TANK, SAN ANDRES
4. Property Code 37215	5. Property Name ESKIMO STATE	6. Well No. 007
7. OGRID No. 13837	8. Operator Name MACK ENERGY CORP	9. Elevation 3696

10. Surface Location

UL - Lot	Section	Township	Range	Lot Idn	Feet From	N/S Line	Feet From	E/W Line	County
D	30	15S	29E		965	N	330	W	CHAVES

11. Bottom Hole Location If Different From Surface

UL - Lot	Section	Township	Range	Lot Idn	Feet From	N/S Line	Feet From	E/W Line	County
12. Dedicated Acres 40.34	13. Joint or Infill	14. Consolidation Code	15. Order No.						

NO ALLOWABLE WILL BE ASSIGNED TO THIS COMPLETION UNTIL ALL INTERESTS HAVE BEEN CONSOLIDATED OR A NON-STANDARD UNIT HAS BEEN APPROVED BY THE DIVISION

<div style="border: 1px solid black; width: 100px; height: 100px; margin: 0 auto; position: relative;"> <div style="position: absolute; top: 0; left: 0; width: 100%; height: 100%; background-color: black; opacity: 0.5;"></div> <div style="position: absolute; top: 50%; left: 50%; transform: translate(-50%, -50%); font-size: 20px; font-weight: bold;">X</div> </div>	<p style="text-align: center;">OPERATOR CERTIFICATION</p> <p><i>I hereby certify that the information contained herein is true and complete to the best of my knowledge and belief, and that this organization either owns a working interest or unleased mineral interest in the land including the proposed bottom hole location(s) or has a right to drill this well at this location pursuant to a contract with an owner of such a mineral or working interest, or to a voluntary pooling agreement or a compulsory pooling order heretofore entered by the division.</i></p> <p>E-Signed By: Jerry Sherrell Title: Production Clerk Date: 9/11/2008</p> <hr/> <p style="text-align: center;">SURVEYOR CERTIFICATION</p> <p><i>I hereby certify that the well location shown on this plat was plotted from field notes of actual surveys made by me or under my supervision, and that the same is true and correct to the best of my belief.</i></p> <p>Surveyed By: Ronald Eidson Date of Survey: 9/11/2008 Certificate Number: 3239</p>
---	--

District I

1625 N. French Dr., Hobbs, NM 88240
 Phone:(505) 393-6161 Fax:(505) 393-0720

District II

1301 W. Grand Ave., Artesia, NM 88210
 Phone:(505) 748-1283 Fax:(505) 748-9720

District III

1000 Rio Brazos Rd., Aztec, NM 87410
 Phone:(505) 334-6178 Fax:(505) 334-6170

District IV

1220 S. St Francis Dr., Santa Fe, NM 87505
 Phone:(505) 476-3470 Fax:(505) 476-3462

State of New Mexico
Energy, Minerals and Natural Resources

Form C-102
 Permit 81844

Oil Conservation Division
1220 S. St Francis Dr.
Santa Fe, NM 87505

WELL LOCATION AND ACREAGE DEDICATION PLAT

1. API Number 30-05-64054	2. Pool Code 52770	3. Pool Name ROUND TANK, SAN ANDRES
4. Property Code 37215	5. Property Name ESKIMO STATE	6. Well No. 008
7. OGRID No. 13837	8. Operator Name MACK ENERGY CORP	9. Elevation 3697

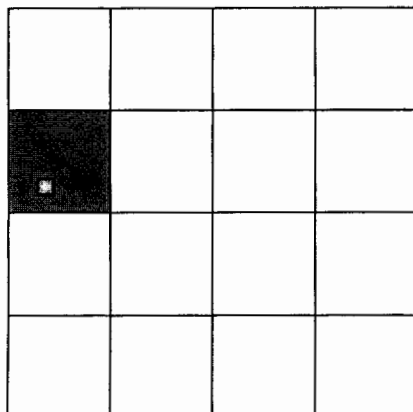
10. Surface Location

UL - Lot	Section	Township	Range	Lot Idn	Feet From	N/S Line	Feet From	E/W Line	County
E	30	15S	29E		2285	N	465	W	CHAVES

11. Bottom Hole Location If Different From Surface

UL - Lot	Section	Township	Range	Lot Idn	Feet From	N/S Line	Feet From	E/W Line	County
12. Dedicated Acres 40.38	13. Joint or Infill	14. Consolidation Code	15. Order No.						

NO ALLOWABLE WILL BE ASSIGNED TO THIS COMPLETION UNTIL ALL INTERESTS HAVE BEEN CONSOLIDATED OR A NON-STANDARD UNIT HAS BEEN APPROVED BY THE DIVISION

**OPERATOR CERTIFICATION**

I hereby certify that the information contained herein is true and complete to the best of my knowledge and belief, and that this organization either owns a working interest or unleased mineral interest in the land including the proposed bottom hole location(s) or has a right to drill this well at this location pursuant to a contract with an owner of such a mineral or working interest, or to a voluntary pooling agreement or a compulsory pooling order heretofore entered by the division.

E-Signed By: Jerry Sherrell
 Title: Production Clerk
 Date: 9/11/2008

SURVEYOR CERTIFICATION

I hereby certify that the well location shown on this plat was plotted from field notes of actual surveys made by me or under my supervision, and that the same is true and correct to the best of my belief.

Surveyed By: Ronald Eidson
 Date of Survey: 9/11/2008
 Certificate Number: 3239

District I
1625 N. French Dr., Hobbs, NM 88240
Phone:(505) 393-6161 Fax:(505) 393-0720

District II
1301 W. Grand Ave., Artesia, NM 88210
Phone:(505) 748-1283 Fax:(505) 748-9720

District III
1000 Rio Brazos Rd., Aztec, NM 87410
Phone:(505) 334-6178 Fax:(505) 334-6170

District IV
1220 S. St Francis Dr., Santa Fe, NM 87505
Phone:(505) 476-3470 Fax:(505) 476-3462

State of New Mexico
Energy, Minerals and Natural Resources
Oil Conservation Division
1220 S. St Francis Dr.
Santa Fe, NM 87505

Form C-102
Permit 84578

WELL LOCATION AND ACREAGE DEDICATION PLAT

1. API Number 30-05-64072	2. Pool Code 52770	3. Pool Name ROUND TANK, SAN ANDRES
4. Property Code 37215	5. Property Name ESKIMO STATE	6. Well No. 009
7. OGRID No. 13837	8. Operator Name MACK ENERGY CORP	9. Elevation 3705

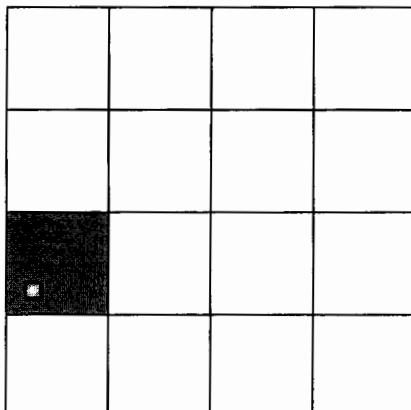
10. Surface Location

UL - Lot L	Section 30	Township 15S	Range 29E	Lot Idn 3	Feet From 1650	N/S Line S	Feet From 330	E/W Line W	County CHAVES
---------------	---------------	-----------------	--------------	--------------	-------------------	---------------	------------------	---------------	------------------

11. Bottom Hole Location If Different From Surface

UL - Lot	Section	Township	Range	Lot Idn	Feet From	N/S Line	Feet From	E/W Line	County
12. Dedicated Acres 40.42	13. Joint or Infill	14. Consolidation Code	15. Order No.						

**NO ALLOWABLE WILL BE ASSIGNED TO THIS COMPLETION UNTIL ALL INTERESTS HAVE BEEN
CONSOLIDATED OR A NON-STANDARD UNIT HAS BEEN APPROVED BY THE DIVISION**



OPERATOR CERTIFICATION

I hereby certify that the information contained herein is true and complete to the best of my knowledge and belief, and that this organization either owns a working interest or unleased mineral interest in the land including the proposed bottom hole location(s) or has a right to drill this well at this location pursuant to a contract with an owner of such a mineral or working interest, or to a voluntary pooling agreement or a compulsory pooling order heretofore entered by the division.

E-Signed By: Jerry Sherrell
Title: Production Clerk
Date: 11/3/2008

SURVEYOR CERTIFICATION

I hereby certify that the well location shown on this plat was plotted from field notes of actual surveys made by me or under my supervision, and that the same is true and correct to the best of my belief.

Surveyed By: Ronald Eidson
Date of Survey: 10/23/2008
Certificate Number: 3239

District I

1625 N. French Dr., Hobbs, NM 88240
Phone (505) 393-6161 Fax (505) 393-0720

District II

1301 W. Grand Ave., Artesia, NM 88210
Phone (505) 748-1283 Fax (505) 748-9720

District III

1000 Rio Brazos Rd., Aztec, NM 87410
Phone (505) 334-6178 Fax (505) 334-6170

District IV

1220 S. St Francis Dr., Santa Fe, NM 87505
Phone (505) 476-3470 Fax (505) 476-3462

State of New Mexico
Energy, Minerals and Natural Resources

Form C-102
Permit 88030

Oil Conservation Division
1220 S. St Francis Dr.
Santa Fe, NM 87505

WELL LOCATION AND ACREAGE DEDICATION PLAT

1. API Number 30-05-64086	2. Pool Code 52770	3. Pool Name ROUND TANK, SAN ANDRES
4. Property Code 37215	5. Property Name ESKIMO STATE	6. Well No. 010
7. GRID No. 13837	8. Operator Name MACK ENERGY CORP	9. Elevation 3705

10. Surface Location

UL - Lot	Section	Township	Range	Lot Idn	Feet From	N/S Line	Feet From	E/W Line	County
M	30	15S	29E		990	S	990	W	CHAVES

11. Bottom Hole Location If Different From Surface

UL - Lot	Section	Township	Range	Lot Idn	Feet From	N/S Line	Feet From	E/W Line	County
12. Dedicated Acres 40.46	13. Joint or Infill	14. Consolidation Code	15. Order No.						

**NO ALLOWABLE WILL BE ASSIGNED TO THIS COMPLETION UNTIL ALL INTERESTS HAVE BEEN
CONSOLIDATED OR A NON-STANDARD UNIT HAS BEEN APPROVED BY THE DIVISION**

OPERATOR CERTIFICATION

I hereby certify that the information contained herein is true and complete to the best of my knowledge and belief, and that this organization either owns a working interest or unleased mineral interest in the land including the proposed bottom hole location(s) or has a right to drill this well at this location pursuant to a contract with an owner of such a mineral or working interest, or to a voluntary pooling agreement or a compulsory pooling order heretofore entered by the division.

E-Signed By: Jerry Sherrell

Title: Production Clerk

Date: 1/9/2009

SURVEYOR CERTIFICATION

I hereby certify that the well location shown on this plat was plotted from field notes of actual surveys made by me or under my supervision, and that the same is true and correct to the best of my belief.

Surveyed By: Ronald Eidson

Date of Survey: 1/9/2009

Certificate Number: 3239

Top-Left Quadrant (NW Corner Sec. 19):
 NW CORNER SEC. 19
 LAT. = 33°00'30.792"N
 LONG. = 104°04'36.035"W
 NMSP EAST (FT)
 N = 730744.38
 E = 620015.02

Top-Right Quadrant (NE Corner Sec. 19):
 NE CORNER SEC. 19
 LAT. = 33°00'31.238"N
 LONG. = 104°03'33.145"W
 NMSP EAST (FT)
 N = 730802.99
 E = 625370.10

Bottom-Left Quadrant (SW Corner Sec. 19):
 SW CORNER SEC. 19
 LAT. = 32°59'38.807"N
 LONG. = 104°04'36.058"W
 NMSP EAST (FT)
 N = 725490.64
 E = 620025.90

Bottom-Right Quadrant (SE Corner Sec. 19):
 SE CORNER SEC. 19
 LAT. = 32°59'39.040"N
 LONG. = 104°03'33.194"W
 NMSP EAST (FT)
 N = 725277.69
 E = 625379.72

Central Well Location:
 BOTTOM OF HOLE
 SURFACE LOCATION
 ELEV. = 3746.8'
 LAT. = 32°59'54.712"N (NAD83)
 LONG. = 104°03'43.290"W
 NMSP EAST (FT)
 N = 727109.33
 E = 624515.76

Section 19 Scaled:
 SECTION 19
 SCALED

Surveyor Information:
 Jerry W. Sherrell
 Date: 2-19-2014
 Printed Name: Jerry W. Sherrell
 E-mail Address: jerrys@mcc.com

Surveyor Certification:
 I hereby certify that the information contained herein is true and complete to the best of my knowledge and belief, and that this organization either owns a working interest or sole/minor interest in the land including the proposed bottom hole location or has a right to drill this well at this location pursuant to a contract with an owner of such a mineral or working interest, or to a voluntary pooling agreement or a compulsory pooling order heretofore entered by the division.

Well Location Diagram:
 A diagram showing the well location relative to the section corners. The well location is marked with a point and labeled 'BOTTOM OF HOLE' and 'SURFACE LOCATION'. A diagram shows the well location relative to the section corners.

DISTRICT I
1625 N. FRENCH DR., ROBBES, NM 88240

DISTRICT II
1301 F. GRAND AVENUE, ARTESIA, NM 88210

DISTRICT III
1000 Rio Brazos Rd., Aztec, NM 87410

DISTRICT IV
1220 S. ST. FRANCIS DR., SANTA FE, NM 87505

State of New Mexico
Energy, Minerals and Natural Resources Department

OIL CONSERVATION DIVISION
1220 SOUTH ST. FRANCIS DR.
Santa Fe, New Mexico 87505

Form C-102
Revised October 12, 2005
Submit to Appropriate District Office
State Lease - 4 Copies
Fee Lease - 3 Copies

WELL LOCATION AND ACREAGE DEDICATION PLAT

☐ AMENDED REPORT

API Number 30-005-64016	Pool Code 52770	Pool Name ROUND TANK; SAN ANDRES
Property Code 37026	Property Name SEAHAWKS FEDERAL	Well Number 1
GRID No. 013837	Operator Name MACK ENERGY CORPORATION	Elevation 3738'

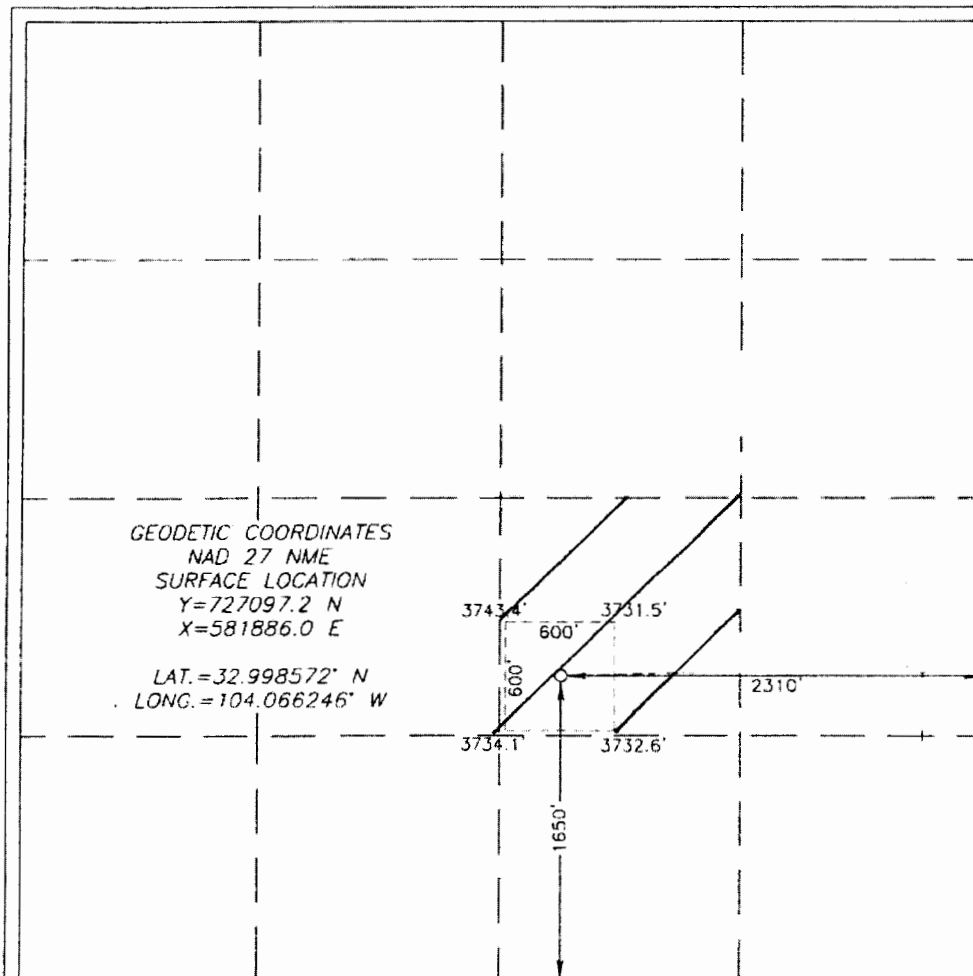
Surface Location

UL or lot No. J	Section 19	Township 15-S	Range 29-E	Lot Idn	Feet from the 1650	North/South line SOUTH	Feet from the 2310	East/West line EAST	County CHAVES
--------------------	---------------	------------------	---------------	---------	-----------------------	---------------------------	-----------------------	------------------------	------------------

Bottom Hole Location If Different From Surface

UL or lot No.	Section	Township	Range	Lot Idn	Feet from the	North/South line	Feet from the	East/West line	County
Dedicated Acres 40	Joint or Infill	Consolidation Code	Order No.						

NO ALLOWABLE WILL BE ASSIGNED TO THIS COMPLETION UNTIL ALL INTERESTS HAVE BEEN CONSOLIDATED
OR A NON-STANDARD UNIT HAS BEEN APPROVED BY THE DIVISION



OPERATOR CERTIFICATION

I hereby certify that the information herein is true and complete to the best of my knowledge and belief, and that this organization either owns a working interest or unleased mineral interest in the land including the proposed bottom hole location or has a right to drill this well at this location pursuant to a contract with an owner of such mineral or working interest, or to a voluntary pooling agreement or a compulsory pooling order heretofore entered by the division.

Jerry W. Sherrell 2/17/09
Signature Date

Jerry W. Sherrell
Printed Name

SURVEYOR CERTIFICATION

I hereby certify that the well location shown on this plat was plotted from field notes of actual surveys made by me or under my supervision, and that the same is true and correct to the best of my belief.

SEPTEMBER 28 2007
Date Surveyed
Signature & Seal of Professional Surveyor
RONALD EIDSON 10/28/07
07-11-1347

Certificate No. GARY EIDSON 12641
RONALD EIDSON 3239

SCANNED

DISTRICT I

1625 N. FRENCH DR., BOBBS, NM 86240

DISTRICT II

1391 W. GRAND AVENUE, ARTESIA, NM 88210

DISTRICT III

1000 Rio Brazos Rd., Aztec, NM 87410

DISTRICT IV

1220 S. ST. FRANCIS DR., SANTA FE, NM 87505

State of New Mexico

Energy, Minerals and Natural Resources Department

OIL CONSERVATION DIVISION

1220 SOUTH ST. FRANCIS DR.
Santa Fe, New Mexico 87505

Form C-102

Revised October 12, 2005

Submit to Appropriate District Office

State Lease - 4 Copies

Fee Lease - 3 Copies

WELL LOCATION AND ACREAGE DEDICATION PLAT

☐ AMENDED REPORT

API Number 30-005-64059	Pool Code 52770	Pool Name Round Tank; San Andres
Property Code 37423	Property Name BLUE BOMBER FEDERAL	Well Number 1
OGRID No. 13837	Operator Name MACK ENERGY CORPORATION	Elevation 3736'

Surface Location

UL or lot No.	Section	Township	Range	Lot Idn	Feet from the	North/South line	Feet from the	East/West line	County
J	7	15-S	29-E		2310	SOUTH	1650	EAST	CHAVES

Bottom Hole Location If Different From Surface

UL or lot No.	Section	Township	Range	Lot Idn	Feet from the	North/South line	Feet from the	East/West line	County
Dedicated Acres 40	Joint or Infill	Consolidation Code	Order No.						

NO ALLOWABLE WILL BE ASSIGNED TO THIS COMPLETION UNTIL ALL INTERESTS HAVE BEEN CONSOLIDATED
OR A NON-STANDARD UNIT HAS BEEN APPROVED BY THE DIVISION

<p>GEODETIC COORDINATES NAD 27 NME</p> <p>Y=738324.2 N X=582540.1 E</p> <p>LAT.=33.029426° N LONG.=104.064018° W</p>	<p>OPERATOR CERTIFICATION</p> <p>I hereby certify that the information herein is true and complete to the best of my knowledge and belief, and that this organization either owns a working interest or unleased mineral interest in the land including the proposed bottom hole location or has a right to drill this well at this location pursuant to a contract with an owner of such mineral or working interest, or to a voluntary pooling agreement or a compulsory pooling order heretofore entered by the division.</p> <p><i>Jerry W. Sherrell</i> 7-15-08 Signature Date <i>Jerry W. Sherrell</i> Printed Name</p> <p>SURVEYOR CERTIFICATION</p> <p>I hereby certify that the well location shown on this plat was plotted from field notes of actual surveys made by me or under my supervision, and that the same is true and correct to the best of my belief.</p> <p>NEW MEXICO Date Surveyed: 7/15/08 Signature: <i>Ronald E. Edson</i> Professional Surveyor Seal 3239 Certificate No. GARY EDMON 12841 RONALD EIDSON 3239</p>
--	---

District I
1625 N. French Dr., Hobbs, NM 88241
Phone (575) 795-6161 Fax (575) 795-6720
District II
511 S. First St., Artesia, NM 88210
Phone (505) 948-1244 Fax (505) 746-4726
District III
1000 Rio Hondo Road, Aztec, NM 87410
Phone (505) 346-1175 Fax (505) 344-6170
District IV
1220 S. St. Francis Dr., Santa Fe, NM 87505
Phone (505) 476-3460 Fax (505) 476-3467

State of New Mexico
Energy, Minerals & Natural Resources **IMMEDIATE OIL CONSERVATION**
OIL CONSERVATION DIVISION ARTESTA DISTRICT
1220 South St. Francis Dr.
Santa Fe, NM 87505

Form C-102
Revised August 1, 2011
Submit a copy to appropriate District Office
DEC 27 2017 ☐ AMENDED REPORT

RECEIVED
WELL LOCATION AND ACREAGE DEDICATION PLAT

1 API Number 30-005-64308		2 Pool Code 52770		3 Pool Name Round Tank; San Andres	
4 Property Code 320520		5 Property Name THUNDER BAY FEDERAL COM			6 Well Number IH
7 OGRID No. 13837		8 Operator Name MACK ENERGY CORPORATION			9 Elevation 3844.9
10 Surface Location					
UT, or lot no. C	Section 22	Township 15 S	Range 29 E	Lot Idn 10	Feet from the 1650
			North/South line NORTH	Feet from the 1650	East/West line WEST
			County CHAVES		
11 Bottom Hole Location If Different From Surface					
UT, or lot no. N	Section 22	Township 15 S	Range 29 E	Lot Idn 270	Feet from the 1675
			North/South line SOUTH	Feet from the 1675	East/West line WEST
			County CHAVES		
12 Dedicated Acres		13 Joint or Infill		14 Consolidation Code	
				15 Order No.	

No allowable will be assigned to this completion until all interests have been consolidated or a non-standard unit has been approved by the division.

<p>NW CORNER SEC. 22 LAT. = 33.0086425°N LONG. = 104.0249569°W NMSP EAST (FT) N = 730819.43 E = 635869.46 FIRST TAKE POINT</p> <p>FIRST TAKE POINT 330' FSL, 1648' FWL LAT. = 33.0077793°N LONG. = 104.0195567°W NMSP EAST (FT) N = 730510.26 E = 637525.81</p> <p>W. Q. CORNER SEC. 22 LAT. = 33.0012599°N LONG. = 104.0247553°W NMSP EAST (FT) N = 728133.59 E = 635940.04</p> <p>LAST TAKE POINT 330' FSL, 1674' FWL LAT. = 32.9948963°N LONG. = 104.0192915°W NMSP EAST (FT) N = 725823.29 E = 637621.16</p> <p>SW CORNER SEC. 22 LAT. = 32.9935935°N LONG. = 104.0247445°W NMSP EAST (FT) N = 725489.88 E = 635848.72</p>		<p>N. Q. CORNER SEC. 22 LAT. = 33.0087116°N LONG. = 104.0163901°W NMSP EAST (FT) N = 730852.37 E = 638495.53</p> <p>SURFACE LOCATION THUNDER BAY FEDERAL COM 1H ELEV. = 3844.9' LAT. = 33.0086584°N (NAD83) LONG. = 104.0195748°W NMSP EAST (FT) N = 730830.07 E = 637519.31</p> <p>NOTE: LATITUDE AND LONGITUDE COORDINATES ARE SHOWN USING THE NORTH AMERICAN DATUM OF 1983 (NAD83). LISTED NEW MEXICO STATE PLANE BEARING AND DISTANCES USED ARE NEW MEXICO STATE PLANE EAST COORDINATES MODIFIED TO THE SURFACE VERTICAL DATUM NAVD83.</p> <p>BOTTOM OF HOLE LAT. = 32.9947314°N LONG. = 104.0192879°W NMSP EAST (FT) N = 725763.31 E = 637622.39</p> <p>S. Q. CORNER SEC. 22 LAT. = 32.9935811°N LONG. = 104.0162451°W NMSP EAST (FT) N = 725495.33 E = 638556.12</p>		<p>NE CORNER SEC. 22 LAT. = 33.0087818°N LONG. = 104.0078257°W NMSP EAST (FT) N = 730885.92 E = 64120.85</p> <p>E. Q. CORNER SEC. 22 LAT. = 33.0015079°N LONG. = 104.0077509°W NMSP EAST (FT) N = 728239.54 E = 641151.97</p> <p>SE CORNER SEC. 22 LAT. = 32.9942030°N LONG. = 104.0076851°W NMSP EAST (FT) N = 725581.88 E = 641180.37</p>	
<p>58°52'19"W 2626.08 FT</p> <p>58°52'19"W 2626.35 FT</p>		<p>58°52'19"W 2626.21 FT</p> <p>58°52'19"W 2626.25 FT</p>			

"OPERATOR CERTIFICATION"

I hereby certify that the information contained herein is true and complete to the best of my knowledge and belief, and that this organization either owns, working interest or mineral interest in the land including the proposed bottom hole location or has a right to drill this well at this location pursuant to a contract with an owner of said mineral or working interest or to a voluntary pooling agreement or a completion pooling order hereby entered in the division.

Signature: Deana Weaver Date: 10/2/17

Printed Name: Deana Weaver

E-mail Address: dweaver@mec.com

"SURVEYOR CERTIFICATION"

I hereby certify that the well location shown on this plat was plotted from field notes of actual surveys made by me or under my supervision, and that the same is true and correct to the best of my belief.

SEPTEMBER 8, 2017

Date of Survey: _____

Signature and Seal of Professional Surveyor: [Signature]

Certificate Number: ELDMONT 19410219

SURVEY NO. 53126

SW CORNER SEC. 15
LAT. = 33.0232846°N
LONG. = 104.0248543°W

NWSP EAST (FT)
N = 736146.75
E = 635885.28

W O CORNER SEC. 15
LAT. = 33.0180243°N
LONG. = 104.0248725°W

NWSP EAST (FT)
N = 735955.21
E = 635687.45

SW CORNER SEC. 15
LAT. = 33.0088425°N
LONG. = 104.0249569°W

NWSP EAST (FT)
N = 730019.43
E = 635049.46

W O CORNER SEC. 22
LAT. = 33.0012599°N
LONG. = 104.0247523°W

NWSP EAST (FT)
N = 728133.56
E = 635493.04

SW CORNER SEC. 22
LAT. = 32.9959835°N
LONG. = 104.0247493°W

NWSP EAST (FT)
N = 725480.86
E = 635948.72

NE CORNER SEC. 15
LAT. = 33.0233118°N
LONG. = 104.0078601°E

NWSP EAST (FT)
N = 736136.21
E = 641173.28

E O CORNER SEC. 15
LAT. = 33.0156685°N
LONG. = 104.0077346°E

NWSP EAST (FT)
N = 733464.36
E = 641140.79

SE CORNER SEC. 15
LAT. = 33.0087818°N
LONG. = 104.0078257°E

NWSP EAST (FT)
N = 730885.92
E = 641120.85

E O CORNER SEC. 22
LAT. = 33.0015079°N
LONG. = 104.0077509°E

NWSP EAST (FT)
N = 728230.54
E = 641151.97

SE CORNER SEC. 22
LAT. = 32.9942030°N
LONG. = 104.0078851°E

NWSP EAST (FT)
N = 725581.08
E = 641180.37

HAMILTON FEDERAL COM. 1H
ELEV. = 3463.7
LAT. = 33.0097108°N (NAD83)
LONG. = 104.0229943°W

NWSP EAST (FT)
N = 731209.87
E = 636489.94

S O CORNER SEC. 15
LAT. = 33.0087115°N
LONG. = 104.0216390°E

NWSP EAST (FT)
N = 730852.37
E = 636495.53

FIRST TAKE POINT
330 PBL. 570 PBL.
LAT. = 33.0077599°N
LONG. = 104.0236725°W

NWSP EAST (FT)
N = 730496.75
E = 636448.06

BOTTOM OF HOLE
LAT. = 32.9947346°N
LONG. = 104.0235921°W

NWSP EAST (FT)
N = 725780.55
E = 636302.74

LAST TAKE POINT
330 PSL. 357 PSL.
LAT. = 32.9948994°N
LONG. = 104.0235855°W

NWSP EAST (FT)
N = 725820.54
E = 636304.58

BOTTOM OF HOLE
LAT. = 32.9939871°N
LONG. = 104.0182451°W

NWSP EAST (FT)
N = 725493.33
E = 636256.12

SE CORNER SEC. 22
LAT. = 32.9939871°N
LONG. = 104.0182451°W

NWSP EAST (FT)
N = 725493.33
E = 636256.12

"SURVEYOR CERTIFICATION

I hereby certify that the information contained herein is true and complete to the best of my knowledge and belief and that this organization either owns a working interest or an undivided mineral interest in the land on which the proposed bottom hole location or has a right to drill this well on this surface possession in a contract with an owner of such a mineral or working interest or has a voluntary pooling agreement or a compulsory pooling order hereof or mineral in the division.

Deana Weaver 10/2/17

Signature Date

Deana Weaver
Printed Name

dweaver@mec.com
E-mail Address

"SURVEYOR CERTIFICATION

I hereby certify that the well location shown on this plat was plotted from field notes of actual surveys made by me or under my supervision, and that the same is true and correct to the best of my belief.

SICPMBR 8. 2017

Date of Survey

Deana Weaver

Signature and Seal of Professional Surveyor

Certificate Number FII JAMONTÉ JARAMILLO, PLS 12797

SURVEY NO. 53118

NW CORNER SEC. 17 LAT. = 33.0231877°N LONG. = 104.0591511°W		<div style="display: flex; justify-content: space-between;"><div>S89°04'14"E 2643.06 FT</div><div>N88°47'01"E 2624.38 FT</div></div>		NE CORNER SEC. 17 LAT. = 33.0231840°N LONG. = 104.0419727°W	
NWSP EAST (FT) N = 736082.33 E = 625373.48	N/4 CORNER SEC. 17 LAT. = 33.0230506°N LONG. = 104.0505315°W NWSP EAST (FT) N = 736039.47 E = 628015.51			NWSP EAST (FT) N = 736095.17 E = 630638.62	
MONTREAL FEDERAL COM 1H ELEV. = 3794.5' LAT. = 33.0101250°N (NAD83) LONG. = 104.0452417°W NWSP EAST (FT) N = 731341.16 E = 629649.70					
SURFACE LOCATION					
SW CORNER SEC. 17 LAT. = 33.0086773°N LONG. = 104.0592070°W NWSP EAST (FT) N = 730802.99 E = 625370.10	S/4 CORNER SEC. 17 LAT. = 33.0086712°N LONG. = 104.0504060°W NWSP EAST (FT) N = 730807.76 E = 628006.72			SE CORNER SEC. 17 LAT. = 33.0086670°N LONG. = 104.0420158°W NWSP EAST (FT) N = 730813.44 E = 630640.08	
S89°53'47"W 2637.31 FT S89°52'35"W 2854.03 FT 530' 390'					
BOTTOM OF HOLE LAT. = 32.9949184°N LONG. = 104.0451638°W NWSP EAST (FT) N = 725808.84 E = 629688.75					
BOTTOM OF HOLE					
SW CORNER SEC. 20 LAT. = 32.9941778°N LONG. = 104.0592205°W NWSP EAST (FT) N = 725527.69 E = 625379.72	S/4 CORNER SEC. 20 LAT. = 32.9941825°N LONG. = 104.0506125°W NWSP EAST (FT) N = 725535.63 E = 628018.88			SE CORNER SEC. 20 LAT. = 32.9941741°N LONG. = 104.0499211°W NWSP EAST (FT) N = 725540.51 E = 630651.92	
S89°49'39"W 2639.85 FT S89°53'39"W 2843.73 FT 5534.09 FT 5534.09 FT 500'24'16" 500'24'16"					

"OPERATOR CERTIFICATION"

I hereby certify that the information contained herein is true and complete to the best of my knowledge and belief, and that this organization either owns a working interest or unleased mineral interest in the land including the proposed bottom hole location or has a right to drill this well at this location pursuant to a contract with an owner of such a mineral or working interest, or to a voluntary pooling agreement or a compulsory pooling order heretofore entered by the division.

Deana Weaver 6-23-17

Signature _____ Date _____

Deana Weaver

Printed Name: _____

dweaver@mec.com


E-mail Address: _____

"SURVEYOR CERTIFICATION"

I hereby certify that the well location shown on this plat was plotted from field notes of actual surveys made by me or under my supervision, and that the same is true and correct to the best of my belief.

MAY 15, 2017

Date of Survey: _____



Signature and Seal of Professional Surveyor _____

Certificate Number WILLIAM F. JARAMILLO, PLS 12797

SURVEY NO 2869B

District I
1625 N. French Dr., Hobbs, NM 88240
Phone: (505) 333-6161 Fax: (505) 333-4720
District II
811 S. First St., Artesia, NM 88210
Phone: (505) 748-1283 Fax: (505) 748-9720
District III
1000 Rio Brazos Road, Aztec, NM 87410
Phone: (505) 334-6178 Fax: (505) 334-6170
District IV
1220 S. St. Francis Dr., Santa Fe, NM 87508
Phone: (505) 476-3469 Fax: (505) 476-3462

State of New Mexico
Energy, Minerals & Natural Resources Department
OIL CONSERVATION DIVISION
1220 South St. Francis Dr.
Santa Fe, NM 87505

Form C-102
Revised August 1, 2011
Submit one copy to appropriate
District Office

☐ AMENDED REPORT

WELL LOCATION AND ACREAGE DEDICATION PLAT

1 API Number 30-005-64241		2 Pool Code 52770		3 Pool Name Round Tank; San Andres	
4 Property Code 314080		5 Property Name PRINCE RUPERT FEDERAL			6 Well Number 3H
7 OGRID No. 13837		8 Operator Name MACK ENERGY CORPORATION			9 Elevation 3780.5

* Surface Location

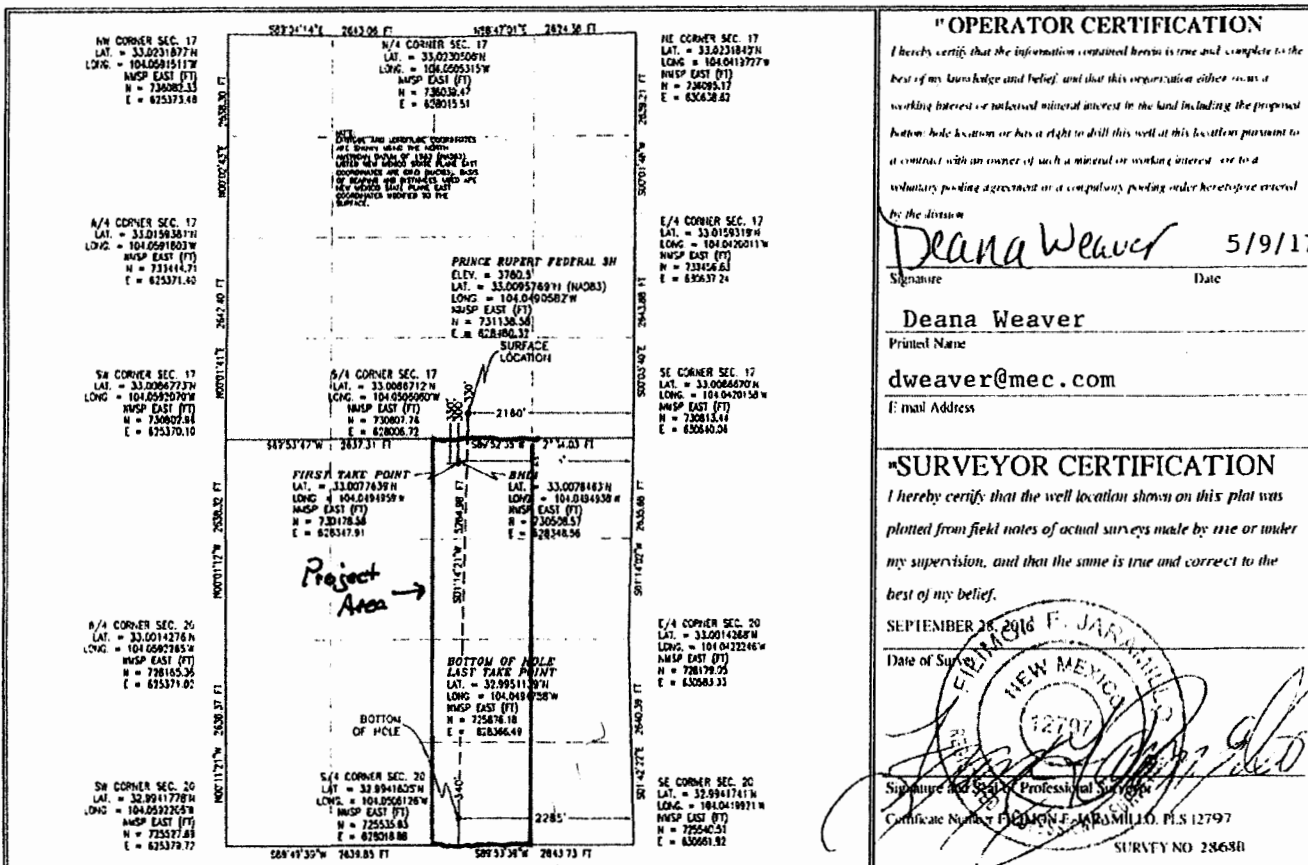
UL or lot no.	Section	Township	Range	Lot Idn	Feet from the	North/South line	Feet from the	East/West line	County
O	17	15 S	29 E		330	SOUTH	2160	EAST	CHAVES

" Bottom Hole Location If Different From Surface

UL or lot no.	Section	Township	Range	Lot Idn	Feet from the	North/South line	Feet from the	East/West line	County
O	20	15 S	29 E		259	SOUTH	2267	EAST	CHAVES

10 Dedicated Acres 160	11 Joint or Infill	12 Consolidation Code	13 Order No.
----------------------------------	--------------------	-----------------------	--------------

No allowable will be assigned to this completion until all interests have been consolidated or a non-standard unit has been approved by the division.



SCANNEL

District I
1625 N. French Dr., Hobbs, NM 88240
Phone: (505) 393-6161 Fax: (505) 393-0720
District II
811 S. First St., Artesia, NM 88210
Phone: (505) 748-1293 Fax: (505) 748-9720
District III
1000 Rio Brazos Road, Aztec, NM 87410
Phone: (505) 334-6178 Fax: (505) 334-6170
District IV
1229 S. St. Francis Dr., Santa Fe, NM 87505
Phone: (505) 476-3460 Fax: (505) 476-3462

State of New Mexico
Energy, Minerals & Natural Resources Department
OIL CONSERVATION DIVISION
1220 South St. Francis Dr.
Santa Fe, NM 87505

Form C-102
Revised August 1, 2011
Submit one copy to appropriate
District Office

☐ AMENDED REPORT

WELL LOCATION AND ACREAGE DEDICATION PLAT

¹ API Number	² Pool Code	³ Pool Name
	52770	Round Tank; San Andres
⁴ Property Code	⁵ Property Name	
	CHILLIWACK FEDERAL COM	
⁷ OGRID No.	⁸ Operator Name	⁶ Well Number
13837	MACK ENERGY CORPORATION	1H
		⁹ Elevation
		3781.9

¹⁰ Surface Location

UL or lot no.	Section	Township	Range	Lot Idn	Feet from the	North/South line	Feet from the	East/West line	County
M	17	15 S	29 E		810	SOUTH	965	WEST	CHAVES

¹¹ Bottom Hole Location If Different From Surface

UL or lot no.	Section	Township	Range	Lot Idn	Feet from the	North/South line	Feet from the	East/ West line	County
M	20	15 S	29 E		5	SOUTH	965	WEST	CHAVES

¹² Dedicated Acres	¹³ Joint or Infill	¹⁴ Consolidation Code	¹⁵ Order No.
200			

No allowable will be assigned to this completion until all interests have been consolidated or a non-standard unit has been approved by the division.

<p>NW CORNER SEC. 17 LAT. = 33.0231877N LONG. = 104.0591511W NMSP EAST (FT) N = 736082.33 E = 625373.48</p> <p>W Q CORNER SEC. 17 LAT. = 33.0159381N LONG. = 104.0591803W NMSP EAST (FT) N = 733444.71 E = 625371.40</p> <p>SW CORNER SEC. 17 LAT. = 33.0086773N LONG. = 104.0592070W NMSP EAST (FT) N = 730802.99 E = 625370.10</p> <p>W Q CORNER SEC. 20 LAT. = 33.0014276N LONG. = 104.0592265W NMSP EAST (FT) N = 728165.36 E = 625371.02</p> <p>LAST TAKE POINT 40' FSL 965' FWL LAT. = 32.9947288N LONG. = 104.0560734W NMSP EAST (FT) N = 725570.59 E = 626344.51</p> <p>SW CORNER SEC. 20 LAT. = 32.9941778N LONG. = 104.0592205W NMSP EAST (FT) N = 725527.69 E = 625379.72</p>		<p>589°04'14"E 2643.06 FT N88°47'01"E 2624.38 FT</p> <p>N Q CORNER SEC. 17 LAT. = 33.0230506N LONG. = 104.0505315W NMSP EAST (FT) N = 736039.47 E = 626015.51</p> <p>CHILLIWACK FEDERAL COM 1H ELEV. = 3781.9' LAT. = 33.0109009N (NAD83) LONG. = 104.0560517W NMSP EAST (FT) N = 731614.56 E = 626335.23</p> <p>FIRST TAKE POINT 62' FSL 965' FWL LAT. = 33.0088455N LONG. = 104.0560587W NMSP EAST (FT) N = 730866.73 E = 626335.05</p> <p>500°00'50"W 748.03 FT 500°06'09"E 5297.52 FT</p> <p>589°53'47"W 2637.31 FT 589°52'35"W 2634.03 FT</p> <p>NOTE: LATITUDE AND LONGITUDE COORDINATES ARE SHOWN USING THE NORTH AMERICAN DATUM OF 1983 (NAD83). LISTED NEW MEXICO STATE PLANE EAST COORDINATES ARE GRID (NAD83). BASIS OF BEARING AND DISTANCES USED ARE NEW MEXICO STATE PLANE EAST COORDINATES MODIFIED TO THE SURFACE. VERTICAL DATUM NAVD88.</p> <p>BOTTOM OF HOLE LAT. = 32.9941926N LONG. = 104.0560739W NMSP EAST (FT) N = 725535.59 E = 626344.45</p> <p>500°05'42"W 35.01 FT 589°53'39"W 2643.73 FT</p>		<p>NE CORNER SEC. 17 LAT. = 33.0231840N LONG. = 104.0419727W NMSP EAST (FT) N = 736095.17 E = 630638.62</p> <p>E Q CORNER SEC. 17 LAT. = 33.0159319N LONG. = 104.0420011W NMSP EAST (FT) N = 733456.83 E = 630637.24</p> <p>SE CORNER SEC. 17 LAT. = 33.0086670N LONG. = 104.0420158W NMSP EAST (FT) N = 730813.44 E = 630640.06</p> <p>E Q CORNER SEC. 20 LAT. = 33.0014268N LONG. = 104.0422246W NMSP EAST (FT) N = 728179.06 E = 630683.33</p> <p>E Q CORNER SEC. 20 LAT. = 32.9941741N LONG. = 104.0419921W NMSP EAST (FT) N = 725540.51 E = 630661.92</p>		<p>¹⁶ OPERATOR CERTIFICATION I hereby certify that the information contained herein is true and complete to the best of my knowledge and belief, and that this organization either owns a working interest or undivided mineral interest in the land including the proposed bottom hole location or has a right to drill this well at this location pursuant to a contract with an owner of such a mineral or working interest, or to a voluntary pooling agreement or a compulsory pooling order heretofore entered by the division.</p> <p>Deana Weaver 3.7.18 Signature Date</p> <p>Deana Weaver Printed Name</p> <p>dweaver@mec.com E-mail Address</p>
		<p>¹⁷ SURVEYOR CERTIFICATION I hereby certify that the well location shown on this plat was plotted from field notes of actual surveys made by me or under my supervision, and that the same is true and correct to the best of my belief.</p> <p>MARCH 2, 2018 Date of Survey</p> <p>Signature and Seal of Professional Surveyor Certificate Number: FILLMONT, JARAMILLO PLS 12797 SURV-EY-NO 5986A</p>				

District I
1625 N. French Dr., Hobbs, NM 88240
Phone: (505) 393-6161 Fax: (505) 393-0720
District II
811 S. First St., Artesia, NM 88210
Phone: (505) 748-1283 Fax: (505) 748-9720
District III
1000 Rio Brazos Road, Aztec, NM 87410
Phone: (505) 334-6178 Fax: (505) 334-6170
District IV
1220 S. St. Francis Dr., Santa Fe, NM 87505
Phone: (505) 476-3460 Fax: (505) 476-3462

State of New Mexico
Energy, Minerals & Natural Resources Department
OIL CONSERVATION DIVISION
1220 South St. Francis Dr.
Santa Fe, NM 87505

Form C-102
Revised August 1, 2011
Submit one copy to appropriate
District Office

☐ AMENDED REPORT

WELL LOCATION AND ACREAGE DEDICATION PLAT

¹ API Number 30-005-64305	² Pool Code 52770	³ Pool Name Round Tank; San Andres
⁴ Property Code 320470	⁵ Property Name WINDSOR FEDERAL	
⁷ OGRID No. 13837	⁸ Operator Name MACK ENERGY CORPORATION	
		⁶ Well Number 1H
		⁹ Elevation 3767.0

" Surface Location

UL or lot no.	Section	Township	Range	Lot Idn	Feet from the	North/South line	Feet from the	East/West line	County
N	20	15 S	29 E		660	SOUTH	1675	WEST	CHAVES

" Bottom Hole Location If Different From Surface

UL or lot no.	Section	Township	Range	Lot Idn	Feet from the	North/South line	Feet from the	East/ West line	County
N	29	15 S	29 E		5	SOUTH	1675	WEST	CHAVES

¹⁰ Dedicated Acres 160	¹¹ Joint or Infill	¹² Consolidation Code	¹³ Order No.
---	-------------------------------	----------------------------------	-------------------------

No allowable will be assigned to this completion until all interests have been consolidated or a non-standard unit has been approved by the division.

<p>11 OPERATOR CERTIFICATION</p> <p>I hereby certify that the information contained herein is true and complete to the best of my knowledge and belief, and that this organization either owns a working interest or unleased mineral interest in the land including the proposed bottom hole location or has a right to drill this well at this location pursuant to a contract with an owner of such a mineral or working interest, or to a voluntary pooling agreement or a compulsory pooling order heretofore entered in the division.</p> <p><i>Deana Weaver</i> 3.20.18 Signature Date</p> <p>Deana Weaver Printed Name</p> <p>dweaver@mec.com E-mail Address</p>		<p>12 SURVEYOR CERTIFICATION</p> <p>I hereby certify that the well location shown on this plat was plotted from field notes of actual surveys made by me or under my supervision, and that the same is true and correct to the best of my belief.</p> <p>MARCH 1, 2018 Date of Survey</p> <p><i>[Signature]</i> Signature and Seal of Professional Surveyor</p> <p>Certificate Number PLUMONT JARAMILLO PLS 12797</p> <p>SURVEY NO. 2808D</p>	
---	--	---	--

District I
1625 N French Dr., Hobbs, NM 88240
Phone: (575) 393-6161 Fax: (575) 393-0720
District II
811 S First St., Artesia, NM 88210
Phone: (575) 748-1283 Fax: (575) 748-9720
District III
1000 Rio Brazos Road, Aztec, NM 87410
Phone: (505) 334-6178 Fax: (505) 334-6170
District IV
1220 S. St. Francis Dr., Santa Fe, NM 87505
Phone: (505) 476-3460 Fax: (505) 476-3462

State of New Mexico
Energy, Minerals & Natural Resources Department
OIL CONSERVATION DIVISION
1220 South St. Francis Dr.
Santa Fe, NM 87505

Form C-102
Revised August 1, 2011
Submit one copy to appropriate
District Office
☐ AMENDED REPORT

WELL LOCATION AND ACREAGE DEDICATION PLAT

¹ API Number 30-005-64310	² Pool Code 52770	³ Pool Name Round Tank; San Andres
⁴ Property Code 320814	⁵ Property Name PRINCE GEORGE FEDERAL COM	
⁷ OGRID No. 13837	⁸ Operator Name MACK ENERGY CORPORATION	
		⁶ Well Number 1H
		⁹ Elevation 3781.5

¹⁰ Surface Location

UL or lot no.	Section	Township	Range	Lot Idn	Feet from the	North/South line	Feet from the	East/West line	County
B	32	15 S	29 E		660	NORTH	2285	EAST	CHAVES

¹¹ Bottom Hole Location If Different From Surface

UL or lot no.	Section	Township	Range	Lot Idn	Feet from the	North/South line	Feet from the	East/ West line	County
B	29	15 S	29 E		1	NORTH	2285	EAST	CHAVES

¹² Dedicated Acres 200	¹³ Joint or Infill	¹⁴ Consolidation Code	¹⁵ Order No.
---	-------------------------------	----------------------------------	-------------------------

No allowable will be assigned to this completion until all interests have been consolidated or a non-standard unit has been approved by the division.

<p>17 OPERATOR CERTIFICATION I hereby certify that the information contained herein is true and complete to the best of my knowledge and belief, and that this organization either owns a working interest or unleased mineral interest in the land including the proposed bottom hole location or has a right to drill this well at this location pursuant to a contract with an owner of such a mineral or working interest, or to a voluntary pooling agreement or a compulsory pooling order heretofore entered by the division.</p> <p>Deana Weaver 3.8.18 Signature Date</p> <p>Deana Weaver Printed Name</p> <p>dweaver@mec.com E-mail Address</p>		<p>18 SURVEYOR CERTIFICATION I hereby certify that the well location shown on this plat was plotted from field notes of actual surveys made by me or under my supervision, and that the same is true and correct to the best of my belief.</p> <p>FEBRUARY 28, 2018 Date of Survey</p> <p><i>[Signature]</i> Signature and Seal of Professional Surveyor</p> <p>Certificate Number ELIMON I. JARAMILLO PLS 12797 SURVY NO 5610A</p>	
---	--	---	--

District I
1825 N. French Dr., H-406, NM 87240
Phone: (505) 393-6161 Fax: (505) 293-0720
District II
511 S. First St., Artesia, NM 87210
Phone: (505) 748-1234 Fax: (505) 748-9720
District III
1000 Rio Brazos Road, Aztec, NM 87410
Phone: (505) 334-6175 Fax: (505) 334-6170
District IV
1220 S. St. Francis Dr., Santa Fe, NM 87505
Phone: (505) 476-3460 Fax: (505) 476-3462

State of New Mexico
Energy, Minerals & Natural Resources Department
OIL CONSERVATION DIVISION
1220 South St. Francis Dr.
Santa Fe, NM 87505

Form C-102
Revised August 1, 2011
Submit one copy to appropriate
District Office

☐ AMENDED REPORT

WELL LOCATION AND ACREAGE DEDICATION PLAT

¹ API Number	² Pool Code 52770	³ Pool Name Round Tank; San Andres
⁴ Property Code	⁵ Property Name SASKATOON FEDERAL COM	⁶ Well Number 1H
⁷ OGRID No. 13837	⁸ Operator Name MACK ENERGY CORPORATION	⁹ Elevation 3747.1

" Surface Location

UL or lot no.	Section	Township	Range	Lot Idn	Feet from the	North/South line	Feet from the	East/West line	County
O	18	15 S	29 E		960	SOUTH	1675	EAST	CHAVES

" Bottom Hole Location If Different From Surface

UL or lot no.	Section	Township	Range	Lot Idn	Feet from the	North/South line	Feet from the	East/ West line	County
O	19	15 S	29 E		5	SOUTH	1675	EAST	CHAVES

¹² Dedicated Acres 160	¹³ Joint or Infill	¹⁴ Consolidation Code	¹⁵ Order No.
--------------------------------------	-------------------------------	----------------------------------	-------------------------

No allowable will be assigned to this completion until all interests have been consolidated or a non-standard unit has been approved by the division.

<p>NW CORNER SEC. 18 LAT. = 33.0232894 N LONG. = 104.0767643 W NWSP EAST (FT) N = 736105.72 E = 619974.98</p> <p>W Q CORNER SEC. 18 LAT. = 33.0159130 N LONG. = 104.0767347 W NWSP EAST (FT) N = 733421.99 E = 619990.60</p> <p>SW CORNER SEC. 18 LAT. = 33.0085333 N LONG. = 104.0766764 W NWSP EAST (FT) N = 730744.38 E = 620015.02</p> <p>W Q CORNER SEC. 19 LAT. = 33.0013355 N LONG. = 104.0766842 W NWSP EAST (FT) N = 728118.34 E = 620019.04</p> <p>SW CORNER SEC. 19 LAT. = 32.9941131 N LONG. = 104.0766827 W NWSP EAST (FT) N = 725490.64 E = 620025.90</p>	<p>589°23'08"E 2761.24 FT N 89°51'54"E 2638.82 FT</p> <p>N Q CORNER SEC. 18 LAT. = 33.0231892 N LONG. = 104.0677584 W NWSP EAST (FT) N = 736076.12 E = 622735.35</p> <p>NWSP EAST (FT) N = 731744.54 E = 623696.04</p> <p>SASKATOON FEDERAL COM 1H ELEV. = 3747.1' LAT. = 33.0112770 N (NAD83) LONG. = 104.0646602 W</p> <p>1000.14 FT</p> <p>589°22'23"W 2678.39 FT 589°22'23"W 2678.39 FT</p> <p>NOTE: LATITUDE AND LONGITUDE COORDINATES ARE SHOWN USING THE NORTH AMERICAN DATUM OF 1983 (NAD83) LISTED NEW MEXICO STATE PLANE EAST COORDINATES ARE GRID (NAD83) BASIS OF BEARING AND DISTANCES USED ARE NEW MEXICO STATE PLANE EAST COORDINATES MODIFIED TO THE SURFACE VERTICAL DATUM NAVD83.</p> <p>589°22'23"W 2678.39 FT 589°22'23"W 2678.39 FT</p> <p>589°36'13"W 2677.67 FT 589°36'13"W 2677.67 FT</p>	<p>NE CORNER SEC. 18 LAT. = 33.0231877 N LONG. = 104.0591511 W NWSP EAST (FT) N = 736082.33 E = 625373.48</p> <p>E Q CORNER SEC. 18 LAT. = 33.0159381 N LONG. = 104.0591803 W NWSP EAST (FT) N = 733444.71 E = 625371.40</p> <p>SE CORNER SEC. 18 LAT. = 33.0086773 N LONG. = 104.0592070 W NWSP EAST (FT) N = 730802.99 E = 625370.10</p> <p>E Q CORNER SEC. 19 LAT. = 33.0014276 N LONG. = 104.0592265 W NWSP EAST (FT) N = 728165.36 E = 625371.02</p> <p>SE CORNER SEC. 19 LAT. = 32.9942678 N LONG. = 104.0646830 W NWSP EAST (FT) N = 725556.09 E = 623704.83</p> <p>SE CORNER SEC. 19 LAT. = 32.9941778 N LONG. = 104.0592205 W NWSP EAST (FT) N = 725527.89 E = 625379.72</p>	<p>" OPERATOR CERTIFICATION I hereby certify that the information contained herein is true and complete to the best of my knowledge and belief, and that this organization either owns a working interest or undivided mineral interest in the land including the proposed bottom hole location or has a right to drill this well at this location pursuant to a contract with an owner of such a mineral or working interest, or to a voluntary pooling agreement or a compulsory pooling order heretofore entered by the division.</p> <p><i>Deana Weaver</i> 322-18 Signature Date</p> <p>Deana Weaver Printed Name</p> <p>dweaver@mec.com E-mail Address</p> <p>"SURVEYOR CERTIFICATION I hereby certify that the well location shown on this plat was plotted from field notes of actual surveys made by me or under my supervision, and that the same is true and correct to the best of my belief.</p> <p>MARCH 2, 2018 Date of Survey</p> <p><i>[Signature]</i> Signature and Seal of Professional Surveyor</p> <p>Certificate Number PH 1101 E JARAMILLO, PLS 12797 SURVEY NO. 5969A</p>
---	--	---	---

NM OIL CONSERVATION
ARTESIA DISTRICT

District I
1525 N. French Dr., Hobbs, NM 88240
Phone: (505) 433-6161 Fax: (505) 433-6120
District II
911 S. First St., Artesia, NM 88210
Phone: (505) 745-1234 Fax: (505) 745-4320
District III
1900 Rio Bravo Blvd., Artesia, NM 88210
Phone: (505) 334-6174 Fax: (505) 334-6170
District IV
1220 S. St. Francis Dr., Santa Fe, NM 87505
Phone: (505) 476-3469 Fax: (505) 476-3462

State of New Mexico
Energy, Minerals & Natural Resources Department
OIL CONSERVATION DIVISION
1220 South St. Francis Dr.
Santa Fe, NM 87505

DEC 06 2017 Form C-102
Revised August 1, 2011
Submit one copy to appropriate
District Office

☐ AMENDED REPORT

WELL LOCATION AND ACREAGE DEDICATION PLAT

1 API Number 30-005-64304		2 Pool Code 52770		3 Pool Name Round Tank; San Andres	
4 Property Code 320469		5 Property Name OTTAWA FEDERAL COM			6 Well Number IH
7 OGRID No. 13837		8 Operator Name MACK ENERGY CORPORATION			9 Elevation 3767.8

*** Surface Location**

U/L or lot no.	Section	Township	Range	Lot Idn	Feet from the	North/South line	Feet from the	East/West line	County
M	20	15 S	29 E		180	SOUTH	280	WEST	CHAVES

*** Bottom Hole Location If Different From Surface**

U/L or lot no.	Section	Township	Range	Lot Idn	Feet from the	North/South line	Feet from the	East/West line	County
M	29	15 S	29 E		270	SOUTH	355	WEST	CHAVES

10 Dedicated Acres	11 Joint or Infill	12 Consolidation Code	13 Order No.
--------------------	--------------------	-----------------------	--------------

No allowable will be assigned to this completion until all interests have been consolidated or a non-standard unit has been approved by the division.

<p>11 OPERATOR CERTIFICATION</p> <p>I hereby certify that the information contained herein is true and complete to the best of my knowledge and belief, and that this organization either owns a working interest or mineral interest in the land on which the proposed well is to be located, or has a right to drill this well at this location pursuant to a contract with an owner of such a mineral or working interest, or to a subsurface pooling agreement or a compulsory pooling order hereby are entered into the division.</p> <p>Signature: <u>Deana Weaver</u> Date: <u>10-12-17</u></p> <p>Printed Name: <u>Deana Weaver</u></p> <p>Email Address: <u>dweaver@mec.com</u></p>		<p>12 SURVEYOR CERTIFICATION</p> <p>I hereby certify that the well location shown on this plat was plotted from field notes of actual surveys made by me or under my supervision, and that the same is true and correct to the best of my belief.</p> <p>SEPTEMBER 8, 2017</p> <p>Date of Survey: _____</p> <p>Signature and Seal of Professional Surveyor: <u>[Signature]</u></p> <p>Certificate Number: <u>FI150011</u> (ARABIA 110) PLS 12787</p> <p>SURVEY NO. <u>5300A</u></p>	
---	--	--	--



EDWARD
YOUNG & ASSOCIATES
ATTORNEYS AT LAW
P.O. BOX 1000
SANTA FE, NM 87505

August 1, 2016

Mr. Michael McMillan
Oil Conservation Division
1220 South St. Francis Dr.
Santa Fe, New Mexico 87505

RE: Mack Energy Corporation & Chase Affiliates

Dear Mr. McMillan:

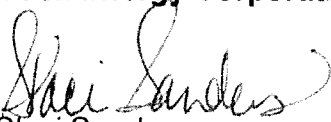
Mack Energy Corporation is a Chase Family owned entity. The following Chase individuals or companies are all affiliates of Mack Energy Corporation and usually own an interest in wells drilled and/or operated by Mack Energy Corporation.

- Mack C. Chase Trust
- Robert C. Chase
- Richard L. Chase or Ventana Minerals LLC
- Gerene Dianne Chase Ferguson or DiaKan Minerals LLC
- Broken Arrow Royalties LLC
- Chase Oil Corporation

All of these family members and companies all office in the same building so notifications can be hand delivered; therefore we request that the certified mail process be waived when these parties are involved.

If you have any questions or need additional information please do not hesitate to contact me. Your assistance is greatly appreciated.

Sincerely,
Mack Energy Corporation


Staci Sanders
Land Manager

/ss

McMillan, Michael, EMNRD

From: Jerry Sherrell <jerrys@mec.com>
Sent: Monday, April 16, 2018 2:27 PM
To: McMillan, Michael, EMNRD
Subject: RE: Gas CTB Application

yes

From: McMillan, Michael, EMNRD [mailto:Michael.McMillan@state.nm.us]
Sent: Monday, April 16, 2018 2:27 PM
To: Jerry Sherrell
Subject: RE: Gas CTB Application

Is the Custody Transfer Point located in Unit O, Section 4 Township 16 South, Range 29 East?
Mike

From: Jerry Sherrell <jerrys@mec.com>
Sent: Monday, April 16, 2018 11:26 AM
To: McMillan, Michael, EMNRD <Michael.McMillan@state.nm.us>
Subject: Gas CTB Application

Jerry W. Sherrell
Mack Energy Corporation
PO Box 960
Artesia, NM 88210
Office 575-748-1288
Cell 575-703-7382
jerrys@mec.com

