

Submit 1 Copy To Appropriate District Office
District I - (575) 393-6161
1625 N. French Dr., Hobbs, NM 88240
District II - (575) 748-1283
811 S. First St., Artesia, NM 88210
District III - (505) 334-6178
1000 Rio Brazos Rd., Aztec, NM 87410
District IV - (505) 476-3460
1220 S. St. Francis Dr., Santa Fe, NM 87505

State of New Mexico
Energy, Minerals and Natural Resources

Form C-103
Revised July 18, 2013

OIL CONSERVATION DIVISION
1220 South St. Francis Dr.
Santa Fe, NM 87505

SUNDRY NOTICES AND REPORTS ON WELLS (DO NOT USE THIS FORM FOR PROPOSALS TO DRILL OR TO DEEPEN OR PLUG BACK TO A DIFFERENT RESERVOIR. USE "APPLICATION FOR PERMIT" (FORM C-101) FOR SUCH PROPOSALS.)		WELL API NO. 30-025-45287
1. Type of Well: Oil Well <input checked="" type="checkbox"/> Gas Well <input type="checkbox"/> Other <input type="checkbox"/>		5. Indicate Type of Lease STATE <input checked="" type="checkbox"/> FEE <input type="checkbox"/>
2. Name of Operator EOG Resources, Inc.		6. State Oil & Gas Lease No. VB-0604; VB-1511
3. Address of Operator P.O. Box 2267, Midland, Texas 79702		7. Lease Name or Unit Agreement Name Lomas Rojas 26 State Com
4. Well Location Unit Letter <u>B</u> : <u>713</u> feet from the <u>North</u> line and <u>1328</u> feet from the <u>East</u> line Section <u>26</u> Township <u>25S</u> Range <u>33E</u> NMPM Lea County		8. Well Number 503H
11. Elevation (Show whether DR, RKB, RT, GR, etc.) 3336'		9. OGRID Number 7377
		10. Pool name or Wildcat Red Hills; Lower Bone Spring [51020]

12. Check Appropriate Box to Indicate Nature of Notice, Report or Other Data

NOTICE OF INTENTION TO:		SUBSEQUENT REPORT OF:	
PERFORM REMEDIAL WORK <input type="checkbox"/>	PLUG AND ABANDON <input type="checkbox"/>	REMEDIAL WORK <input type="checkbox"/>	ALTERING CASING <input type="checkbox"/>
TEMPORARILY ABANDON <input type="checkbox"/>	CHANGE PLANS <input type="checkbox"/>	COMMENCE DRILLING OPNS. <input type="checkbox"/>	P AND A <input type="checkbox"/>
PULL OR ALTER CASING <input type="checkbox"/>	MULTIPLE COMPL <input type="checkbox"/>	CASING/CEMENT JOB <input type="checkbox"/>	
DOWNHOLE COMMINGLE <input type="checkbox"/>			
CLOSED-LOOP SYSTEM <input type="checkbox"/>			
OTHER: <u>Surface commingling</u> <input checked="" type="checkbox"/>		OTHER: <input type="checkbox"/>	

13. Describe proposed or completed operations. (Clearly state all pertinent details, and give pertinent dates, including estimated date of starting any proposed work). SEE RULE 19.15.7.14 NMAC. For Multiple Completions: Attach wellbore diagram of proposed completion or recompletion.

EOG Resources, Inc. respectfully requests an amendment to PLC-437-A to include the following wells:

Lomas Rojas 26 State Com 503H	30-025-45287	[51020] Red Hills; Lower Bone Spring
Lomas Rojas 26 State Com 504H	30-025-45288	[51020] Red Hills; Lower Bone Spring
Lomas Rojas 26 State Com 505H	30-025-45755	[51020] Red Hills; Lower Bone Spring
Lomas Rojas 26 State Com 506H	30-025-45756	[51020] Red Hills; Lower Bone Spring

Please see the attached amended facility diagram and supporting documentation.

Spud Date:

Rig Release Date:

I hereby certify that the information above is true and complete to the best of my knowledge and belief.

SIGNATURE Sarah Mitchell TITLE Regulatory Contractor DATE 6/19/19

Type or print name Sarah Mitchell E-mail address: sarah_mitchell@eogresources.com PHONE: 432-848-9133
For State Use Only

APPROVED BY: [Signature] TITLE Engineer Bureau DATE 06-25-2019
Conditions of Approval (if any):

FACILITY NAME: LOMAS ROJAS 26 CTB

WELL NAME: LOMAS ROJAS 26
STATE COM #501H
API NUMBER: 30-025-42156

GAS METER #60381140
GAS LIFT METER #60384149
OIL METER #10-72480
WATER METER #40-72480

WELL NAME: LOMAS ROJAS 26
STATE COM #502H
API NUMBER: 30-025-42157

GAS METER #60381141
GAS LIFT METER #60384150
OIL METER #10-72481
WATER METER #40-72481

WELL NAME: LOMAS ROJAS 26
STATE COM #701H
API NUMBER: 30-025-42568

GAS METER #60381127
GAS LIFT METER #60384136
OIL METER #10-72230
WATER METER #40-72230

WELL NAME: LOMAS ROJAS 26
STATE COM #702H
API NUMBER: 30-025-42567

GAS METER #60381128
GAS LIFT METER #60384137
OIL METER #10-72872
WATER METER #40-72872

WELL NAME: LOMAS ROJAS 26
STATE COM #703H
API NUMBER: 30-025-42970

GAS METER #60381129
GAS LIFT METER #60384138
OIL METER #10-73121
WATER METER #40-73121

WELL NAME: LOMAS ROJAS 26
STATE COM #704H
API NUMBER: 30-025-42971

GAS METER #60381130
GAS LIFT METER #60384139
OIL METER #10-73122
WATER METER #40-73122

WELL NAME: LOMAS ROJAS 26
STATE COM #705H
API NUMBER: 30-025-43218

GAS METER #60381175
GAS LIFT METER #60384175
OIL METER #10-73357
WATER METER #40-73357

WELL NAME: LOMAS ROJAS 26
STATE COM #706H
API NUMBER: 30-025-43219

GAS METER #60381176
GAS LIFT METER #60384176
OIL METER #10-73358
WATER METER #40-73358

WELL NAME: LOMAS ROJAS 26
STATE COM #707H
API NUMBER: 30-025-43220

GAS METER #60381177
GAS LIFT METER #60384177
OIL METER #10-73359
WATER METER #40-73359

WELL NAME: LOMAS ROJAS 26
STATE COM #708H
API NUMBER: 30-025-43221

GAS METER #60381178
GAS LIFT METER #60384178
OIL METER #10-73360
WATER METER #40-73360

WELL NAME: LOMAS ROJAS 26
STATE COM #503H
API NUMBER: 30-025-45287

GAS METER #60381179
GAS LIFT METER #60384179
OIL METER #10-74111
WATER METER #40-74111

WELL NAME: LOMAS ROJAS 26
STATE COM #504H
API NUMBER: 30-025-45288

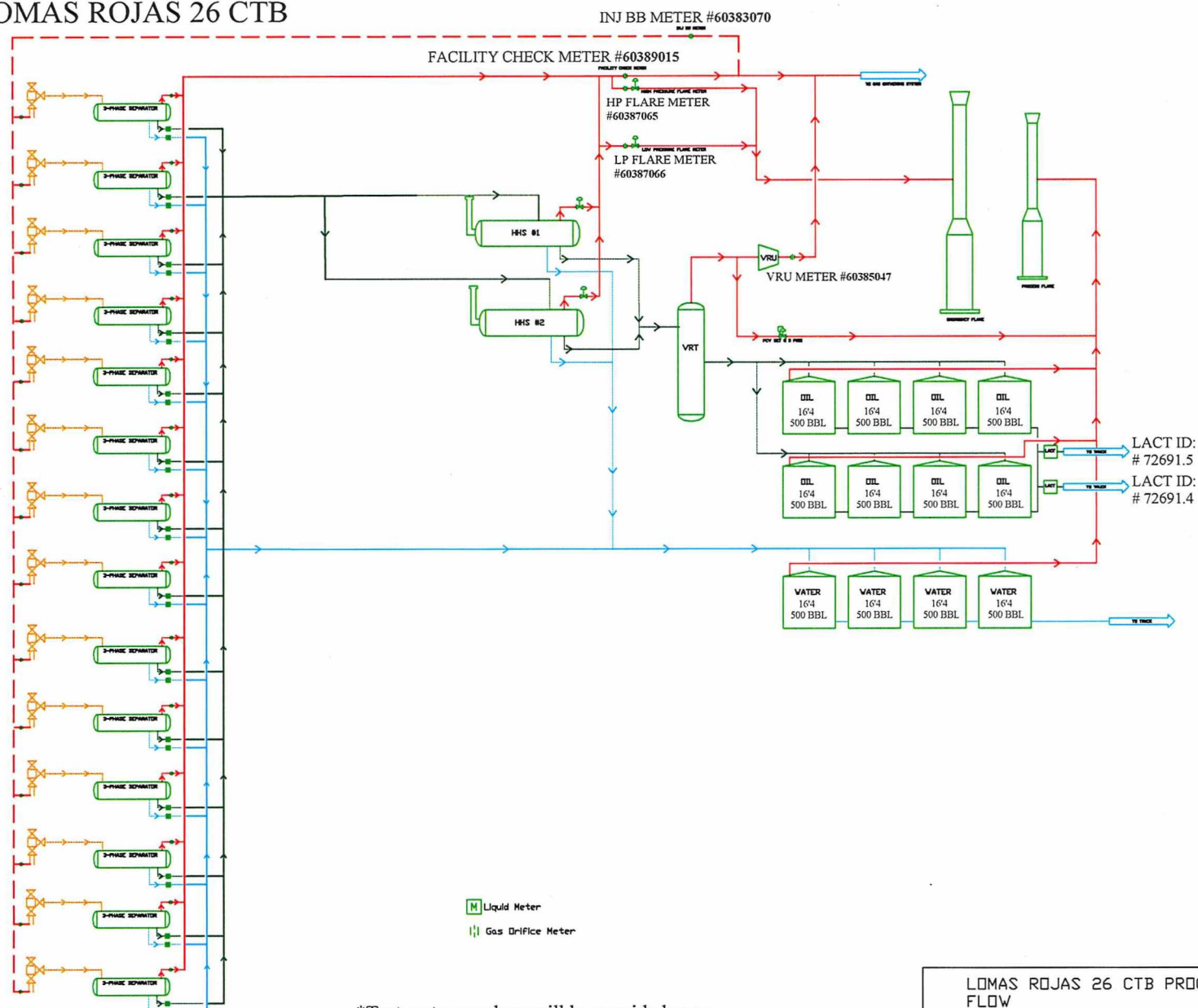
GAS METER #60381187
GAS LIFT METER #60384187
OIL METER #10-74112
WATER METER #40-74112

WELL NAME: LOMAS ROJAS 26
STATE COM #505H
API NUMBER: 30-025-45755

GAS METER #*11111111
GAS LIFT METER #*11111111
OIL METER #*11-11111
WATER METER #*11-11111

WELL NAME: LOMAS ROJAS 26
STATE COM #506H
API NUMBER: 30-025-45756

GAS METER #*11111111
GAS LIFT METER #*11111111
OIL METER #*11-11111
WATER METER #*11-11111



*Test meter numbers will be provided upon installation of meters and completion of the facility.

LOMAS ROJAS 26 CTB PROCESS FLOW

EDG RESOURCES
MIDLAND DIVISION

BY: EPF

rev. 002
06/13/2019

Process and Flow Descriptions:

The production from each well will flow into a dedicated 3-phase separator. The production stream will be separated into 3 independent streams (gas, oil, and water) by the separator and each stream will be measured individually after it exits the separator. The gas will be measured using a senior orifice meter and used to allocate total volume measured at the facility check meter, high pressure flare meter, and low pressure flare meter.

LOMAS ROJAS 26 STATE COM #501H gas allocation meter is an Emerson orifice meter (S/N 60381140)

LOMAS ROJAS 26 STATE COM #502H gas allocation meter is an Emerson orifice meter (S/N 60381141)

LOMAS ROJAS 26 STATE COM #701H gas allocation meter is an Emerson orifice meter (S/N 60381127)

LOMAS ROJAS 26 STATE COM #702H gas allocation meter is an Emerson orifice meter (S/N 60381128)

LOMAS ROJAS 26 STATE COM #703H gas allocation meter is an Emerson orifice meter (S/N 60381129)

LOMAS ROJAS 26 STATE COM #704H gas allocation meter is an Emerson orifice meter (S/N 60381130)

LOMAS ROJAS 26 STATE COM #705H gas allocation meter is an Emerson orifice meter (S/N 60381175)

LOMAS ROJAS 26 STATE COM #706H gas allocation meter is an Emerson orifice meter (S/N 60381176)

LOMAS ROJAS 26 STATE COM #707H gas allocation meter is an Emerson orifice meter (S/N 60381177)

LOMAS ROJAS 26 STATE COM #708H gas allocation meter is an Emerson orifice meter (S/N 60381178)

LOMAS ROJAS 26 STATE COM #503H gas allocation meter is an Emerson orifice meter (S/N 60381179)

LOMAS ROJAS 26 STATE COM #504H gas allocation meter is an Emerson orifice meter (S/N 60381187)

LOMAS ROJAS 26 STATE COM #505H gas allocation meter is an Emerson orifice meter (S/N *1111111)

LOMAS ROJAS 26 STATE COM #506H gas allocation meter is an Emerson orifice meter (S/N *1111111)

The oil from the separators will be measured using a Coriolis meter.

LOMAS ROJAS 26 STATE COM #501H oil allocation meter is a FMC Coriolis meter (S/N 10-72480)

LOMAS ROJAS 26 STATE COM #502H oil allocation meter is a FMC Coriolis meter (S/N 10-72481)

LOMAS ROJAS 26 STATE COM #701H oil allocation meter is a FMC Coriolis meter (S/N 10-72230)

LOMAS ROJAS 26 STATE COM #702H oil allocation meter is a FMC Coriolis meter (S/N 10-72872)

LOMAS ROJAS 26 STATE COM #703H oil allocation meter is a FMC Coriolis meter (S/N 10-73121)

LOMAS ROJAS 26 STATE COM #704H oil allocation meter is a FMC Coriolis meter (S/N 10-73122)

LOMAS ROJAS 26 STATE COM #705H oil allocation meter is a FMC Coriolis meter (S/N 10-73357)

LOMAS ROJAS 26 STATE COM #706H oil allocation meter is a FMC Coriolis meter (S/N 10-73358)

LOMAS ROJAS 26 STATE COM #707H oil allocation meter is a FMC Coriolis meter (S/N 10-73359)

LOMAS ROJAS 26 STATE COM #708H oil allocation meter is a FMC Coriolis meter (S/N 10-73360)

LOMAS ROJAS 26 STATE COM #503H oil allocation meter is a FMC Coriolis meter (S/N 10-74111)

LOMAS ROJAS 26 STATE COM #504H oil allocation meter is a FMC Coriolis meter (S/N 10-74112)

LOMAS ROJAS 26 STATE COM #505H oil allocation meter is a FMC Coriolis meter (S/N *1111111)

LOMAS ROJAS 26 STATE COM #506H oil allocation meter is a FMC Coriolis meter (S/N *1111111)

The water will be measured using a vortex meter. The water from each separator is combined in a common header and flows into (4) 500 barrel coated steel tanks. Guided wave radar is used to measure water volumes in these tanks. The oil from each separator will be combined into a common header and flow into a heated horizontal separator (HHS) to aid separation of water entrained in the oil. Water from the heated separator flows into the common water header connected to the (4) 500 barrel water tanks. The water is then pumped and/or trucked to a salt water disposal well. The oil from the heated separator flows through a vapor recovery tower (VRT) where gas is allowed to breakout at a lower pressure, and then the oil flows into (8) 500 barrel coated steel tanks. Guided wave radar is used to measure water and oil volumes in these tanks. Oil is pumped out of the tanks through a Coriolis meter into a truck or a pipeline. Every tank utilizes a guided wave radar to determine the volume of product in each. After the gas from each separator is measured it is combined into a common header. The gas from the heated separator also flows into this header. The gas flows through the header to a custody transfer Emerson orifice meter (#60389015) that serves as our lease production meter. If the pipeline is experiencing problems and cannot take any gas, the gas will flow through the high pressure and low pressure flare meters (#60387065 and #60387066) to the flare. The overhead gas from the vapor recovery tower is compressed by a vapor recovery compressor and then measured by a custody transfer Emerson orifice meter (#60385047). The gas from the vapor recovery system combines with the gas from the lease production meter and flows into our gas gathering pipeline system.

*Meter numbers will be provided upon installation of meters and completion of the facility.

District I
1625 N. French Dr., Hobbs, NM 88240
Phone: (575) 393-6161 Fax: (575) 393-0720
District II
811 S. First St., Artesia, NM 88210
Phone: (575) 748-1283 Fax: (575) 748-9720
District III
1000 Rio Brazos Road, Aztec, NM 87410
Phone: (505) 334-6178 Fax: (505) 334-6170
District IV
1220 S. St. Francis Dr., Santa Fe, NM 87505
Phone: (505) 476-3460 Fax: (505) 476-3462

State of New Mexico
Energy, Minerals & Natural Resources
Department
OIL CONSERVATION DIVISION
1220 South St. Francis Dr.
Santa Fe, NM 87505

FORM C-102

Revised August 1, 2011

Submit one copy to appropriate
District Office

☐ AMENDED REPORT

WELL LOCATION AND ACREAGE DEDICATION PLAT

¹ API Number 30-025- 45288	² Pool Code 51020	³ Pool Name Red Hills; Lower Bone Spring
⁴ Property Code 37858	⁵ Property Name LOMAS ROJAS 26 STATE COM	
⁶ OGRID No. 7377	⁷ Operator Name EOG RESOURCES, INC.	⁸ Well Number #504H
		⁹ Elevation 3346'

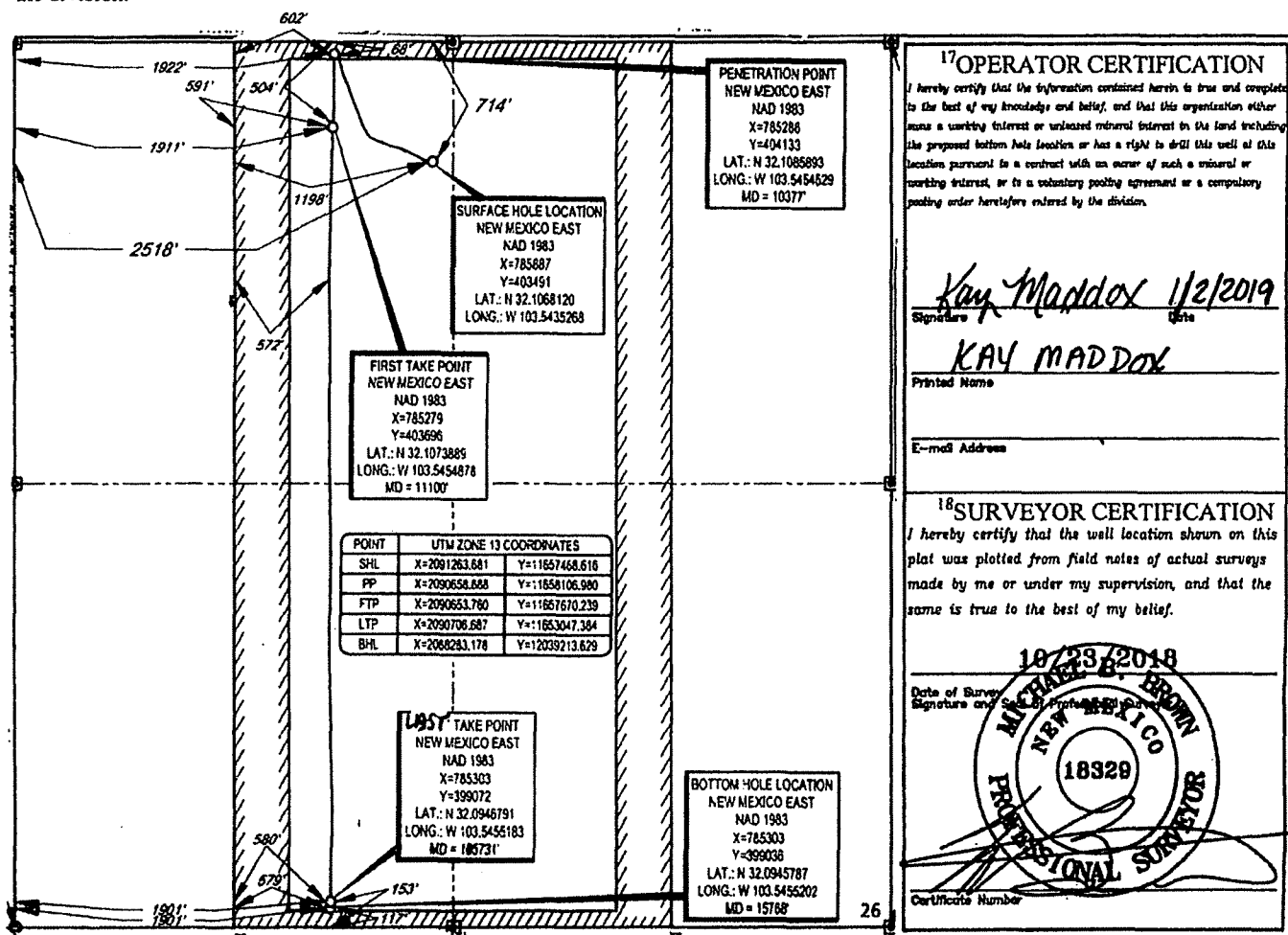
¹⁰Surface Location

UL or lot no.	Section	Township	Range	Lot Idn	Feet from the	North/South line	Feet from the	East/West line	County
C	26	25-S	33-E	-	714'	NORTH	2518'	WEST	LEA

UL or lot no.	Section	Township	Range	Lot Idn	Feet from the	North/South line	Feet from the	East/West line	County
N	26	25-S	33-E	-	117'	SOUTH	1901'	WEST	LEA

¹¹ Dedicated Acres 320.00	¹² Joint or Infill	¹³ Consolidation Code	¹⁴ Order No.
---	-------------------------------	----------------------------------	-------------------------

No allowable will be assigned to this completion until all interests have been consolidated or a non-standard unit has been approved by the division.



District I
1625 N. French Dr., Hobbs, NM 88240
Phone: (575) 393-6161 Fax: (575) 393-0720
District II
811 S. First St., Artesia, NM 88210
Phone: (575) 748-1283 Fax: (575) 748-9720
District III
1000 Rio Brazos Road, Aztec, NM 87410
Phone: (505) 334-6178 Fax: (505) 334-6170
District IV
1220 S. St. Francis Dr., Santa Fe, NM 87505
Phone: (505) 476-3460 Fax: (505) 476-3462

State of New Mexico
Energy, Minerals & Natural Resources
Department
OIL CONSERVATION DIVISION
1220 South St. Francis Dr.
Santa Fe, NM 87505

FORM C-102
Revised August 1, 2011
Submit one copy to appropriate
District Office

☐ AMENDED REPORT

WELL LOCATION AND ACREAGE DEDICATION PLAT

¹ API Number 30-025- 45745	² Pool Code 51020	³ Pool Name Red Hills; Lower Bone Spring
⁴ Property Code 37858	⁵ Property Name LOMAS ROJAS 26 STATE COM	⁶ Well Number 505H
⁷ OGRID No. 7377	⁸ Operator Name EOG RESOURCES, INC.	⁹ Elevation 3342'

¹⁰Surface Location

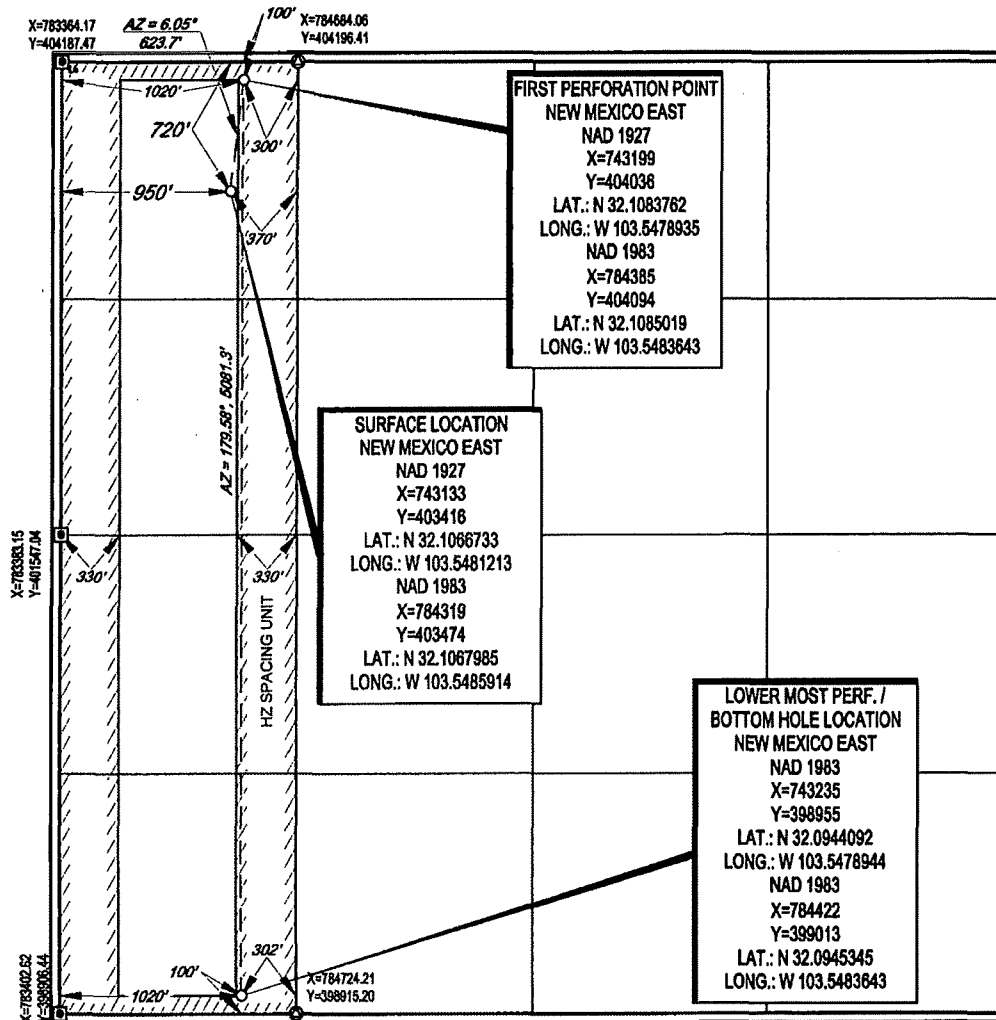
UL or lot no.	Section	Township	Range	Lot Idn	Feet from the	North/South line	Feet from the	East/West line	County
D	26	25-S	33-E	-	720'	NORTH	950'	WEST	LEA

¹¹Bottom Hole Location If Different From Surface

UL or lot no.	Section	Township	Range	Lot Idn	Feet from the	North/South line	Feet from the	East/West line	County
M	26	25-S	33-E	-	100'	SOUTH	1020'	WEST	LEA

¹² Dedicated Acres 160.00	¹³ Joint or Infill	¹⁴ Consolidation Code	¹⁵ Order No. The completed interval of the subject well as shown on the plat is located wholly within an area of uniform ownership under NMAC 19.15.16.15.C(7)
---	-------------------------------	----------------------------------	--

No allowable will be assigned to this completion until all interests have been consolidated or a non-standard unit has been approved by the division.



¹⁷OPERATOR CERTIFICATION

I hereby certify that the information contained herein is true and complete to the best of my knowledge and belief, and that this organization either owns a working interest or undivided mineral interest in the land including the proposed bottom hole location or has a right to drill this well at this location pursuant to a contract with an owner of such a mineral or working interest, or to a voluntary pooling agreement or a compulsory pooling order heretofore entered by the division.

Star L Harrell 3/19/19
Signature Date

Star L Harrell
Printed Name

star_harrell@eogresources.com
E-mail Address

¹⁸SURVEYOR CERTIFICATION

I hereby certify that the well location shown on this plat was plotted from field notes of actual surveys made by me or under my supervision, and that the same is true to the best of my belief.

Date of Survey
Signature and Seal of Professional Surveyor
MICHAEL BROWN
NEW MEXICO
18329
PROFESSIONAL SURVEYOR
Certificate Number

District I
1625 N. French Dr., Hobbs, NM 88240
Phone: (575) 393-6161 Fax: (575) 393-0720
District II
811 S. First St., Artesia, NM 88210
Phone: (575) 748-1283 Fax: (575) 748-9720
District III
1000 Rio Brazos Road, Aztec, NM 87410
Phone: (505) 334-6178 Fax: (505) 334-6170
District IV
1220 S. St. Francis Dr., Santa Fe, NM 87505
Phone: (505) 476-3460 Fax: (505) 476-3462

State of New Mexico
Energy, Minerals & Natural Resources
Department
OIL CONSERVATION DIVISION
1220 South St. Francis Dr.
Santa Fe, NM 87505

FORM C-102

Revised August 1, 2011

Submit one copy to appropriate

District Office

☐ AMENDED REPORT

WELL LOCATION AND ACREAGE DEDICATION PLAT

¹ API Number 30-025-45746	² Pool Code 51020	³ Pool Name Red Hills; Lower Bone Spring
⁴ Property Code 37858	⁵ Property Name LOMAS ROJAS 26 STATE COM	⁶ Well Number 506H
⁷ OGRID No. 7377	⁸ Operator Name EOG RESOURCES, INC.	⁹ Elevation 3342'

¹⁰Surface Location

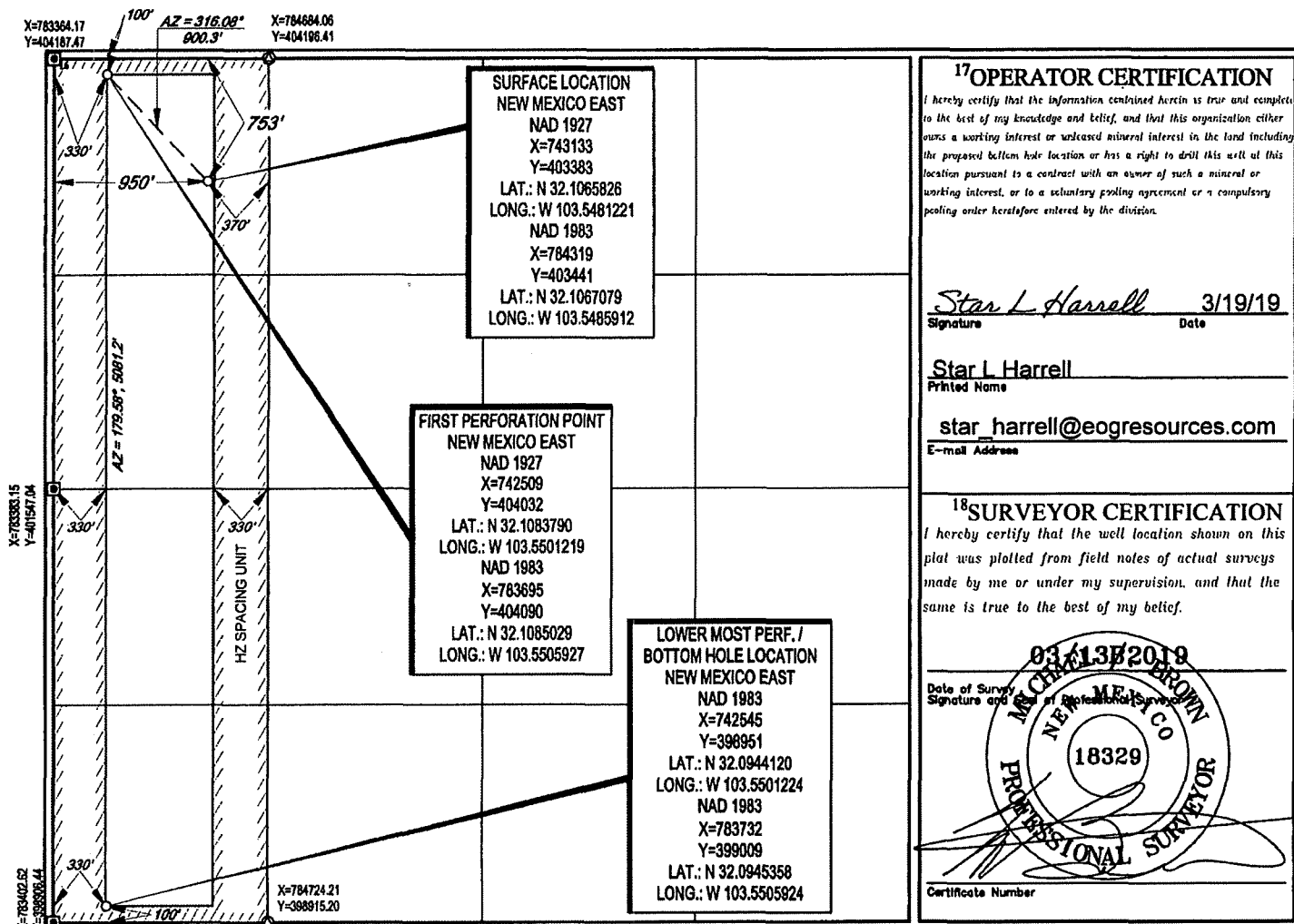
UL or lot no.	Section	Township	Range	Lot Idn	Feet from the	North/South line	Feet from the	East/West line	County
D	26	25-S	33-E	-	753'	NORTH	950'	WEST	LEA

¹¹Bottom Hole Location If Different From Surface

UL or lot no.	Section	Township	Range	Lot Idn	Feet from the	North/South line	Feet from the	East/West line	County
M	26	25-S	33-E	-	100'	SOUTH	330'	WEST	LEA

¹² Dedicated Acres 160.00	¹³ Joint or Infill	¹⁴ Consolidation Code	¹⁵ Order No.
---	-------------------------------	----------------------------------	-------------------------

No allowable will be assigned to this completion until all interests have been consolidated or a non-standard unit has been approved by the division.



APPLICATION FOR, COMMINGLING AT A COMMON CENTRAL TANK BATTERY

Proposal for: **LOMAS ROJAS 26 CTB**

EOG Resources, Inc. is requesting approval to commingle the following wells in a common central tank battery:

State of New Mexico Lease VB-0604, VB-1511

Well Name	Location	API #	Pool	Oil BPD	Gravities	MSCFPD	BTU
LOMAS ROJAS 26 STATE COM #501H	P-26-25S-33E	30-025-42156	Red Hills; Lower Bone Spring [51020]	55.64	46.3	117.99	1236.5
LOMAS ROJAS 26 STATE COM #502H	P-26-25S-33E	30-025-42157	Red Hills; Lower Bone Spring [51020]	67.02	46.7	232.26	1218.4
LOMAS ROJAS 26 STATE COM #701H	A-26-25S-33E	30-025-42568	Bobcat Draw; Upper Wolfcamp [98094]	115.96	47.6	235.21	1281.5
LOMAS ROJAS 26 STATE COM #702H	A-26-25S-33E	30-025-42567	Bobcat Draw; Upper Wolfcamp [98094]	84.98	47.6	163.28	1301
LOMAS ROJAS 26 STATE COM #703H	B-26-25S-33E	30-025-42970	Bobcat Draw; Upper Wolfcamp [98094]	86.18	47.8	190.37	1246
LOMAS ROJAS 26 STATE COM #704H	B-26-25S-33E	30-025-42971	Bobcat Draw; Upper Wolfcamp [98094]	110.59	48	273.14	1259.5
LOMAS ROJAS 26 STATE COM #705H	C-26-25S-33E	30-025-43218	Bobcat Draw; Upper Wolfcamp [98094]	129.44	48.4	330.1	1243.3
LOMAS ROJAS 26 STATE COM #706H	C-26-25S-33E	30-025-43219	Bobcat Draw; Upper Wolfcamp [98094]	110.6	47.9	244.77	1258.8
LOMAS ROJAS 26 STATE COM #707H	D-26-25S-33E	30-025-43220	Bobcat Draw; Upper Wolfcamp [98094]	158.66	47.7	345.84	1251.6
LOMAS ROJAS 26 STATE COM #708H	D-26-25S-33E	30-025-43221	Bobcat Draw; Upper Wolfcamp [98094]	129.86	47.6	221.83	1261.6
LOMAS ROJAS 26 STATE COM #503H	B-26-25S-33E	30-025-45287	Red Hills; Lower Bone Spring [51020]	280.53	47.3	1014.48	1271.2
LOMAS ROJAS 26 STATE COM #504H	C-26-25S-33E	30-025-45288	Red Hills; Lower Bone Spring [51020]	326.19	46.5	896.2	1272.4
LOMAS ROJAS 26 STATE COM #505H	D-26-25S-33E	30-025-45755	Red Hills; Lower Bone Spring [51020]	*1320	*46	*650	*1333
LOMAS ROJAS 26 STATE COM #506H	D-26-25S-33E	30-025-45756	Red Hills; Lower Bone Spring [51020]	*1320	*46	*650	*1333

Production Summary Report

API: 30-025-45287

LOMAS ROJAS 26 STATE COM #503H

Printed On: Wednesday, June 19 2019

		Production					Injection				
Year	Pool	Month	Oil(BBLS)	Gas(MCF)	Water(BBLS)	Days P/I	Water(BBLS)	Co2(MCF)	Gas(MCF)	Other	Pressure
2018	[51020] RED HILLS;LOWER BONE SPRING	Nov	14765	27389	35337	30	0	0	0	0	0
2018	[51020] RED HILLS;LOWER BONE SPRING	Dec	47259	86111	61704	31	0	0	0	0	0
2019	[51020] RED HILLS;LOWER BONE SPRING	Jan	20146	36032	24635	31	0	0	0	0	0
2019	[51020] RED HILLS;LOWER BONE SPRING	Feb	15716	36884	13759	28	0	0	0	0	0
2019	[51020] RED HILLS;LOWER BONE SPRING	Mar	12646	34864	18249	31	0	0	0	0	0
2019	[51020] RED HILLS;LOWER BONE SPRING	Apr	11489	36281	15880	30	0	0	0	0	0

Production Summary Report

API: 30-025-45288

LOMAS ROJAS 26 STATE COM #504H

Printed On: Wednesday, June 19 2019

		Production					Injection				
Year	Pool	Month	Oil(BBLS)	Gas(MCF)	Water(BBLS)	Days P/I	Water(BBLS)	Co2(MCF)	Gas(MCF)	Other	Pressure
2018	[51020] RED HILLS;LOWER BONE SPRING	Nov	14399	23874	39680	30	0	0	0	0	0
2018	[51020] RED HILLS;LOWER BONE SPRING	Dec	47582	80805	61346	31	0	0	0	0	0
2019	[51020] RED HILLS;LOWER BONE SPRING	Jan	21209	29928	24012	31	0	0	0	0	0
2019	[51020] RED HILLS;LOWER BONE SPRING	Feb	17113	37579	23072	28	0	0	0	0	0
2019	[51020] RED HILLS;LOWER BONE SPRING	Mar	14162	34827	19780	31	0	0	0	0	0
2019	[51020] RED HILLS;LOWER BONE SPRING	Apr	12521	32180	17365	30	0	0	0	0	0