

DISTRICT I
1625 N. French Dr., Hobbs, N.M. 88240
Phone: (575) 393-6161 Fax: (575) 393-0720

DISTRICT II
811 S. First St., Artesia, N.M. 88210
Phone: (575) 748-1283 Fax: (575) 748-9720

DISTRICT III
1000 Rio Brazos Rd., Aztec, N.M. 87410
Phone: (505) 334-6178 Fax: (505) 334-6170

DISTRICT IV
1220 S. St. Francis Dr., Santa Fe, NM 87505
Phone: (505) 476-3480 Fax: (505) 476-3482

State of New Mexico
Energy, Minerals & Natural Resources Department

Form C-102
Revised August 1, 2011

Submit one copy to appropriate
District Office

OIL CONSERVATION DIVISION
1220 South St. Francis Dr.
Santa Fe, NM 87505

☐ AMENDED REPORT

WELL LOCATION AND ACREAGE DEDICATION PLAT

¹ API Number	² Pool Code	³ Pool Name
⁴ Property Code	⁵ Property Name CROW CANYON UNIT WDW	⁶ Well Number 1
⁷ OGRID No. 371838	⁸ Operator Name DJR OPERATING, LLC	⁹ Elevation 6727'

¹⁰ Surface Location

UL or lot no.	Section	Township	Range	Lot Idn	Feet from the	North/South line	Feet from the	East/West line	County
0	17	24N	8W		153'	SOUTH	1382'	EAST	SAN JUAN

¹¹ Bottom Hole Location If Different From Surface

UL or lot no.	Section	Township	Range	Lot Idn	Feet from the	North/South line	Feet from the	East/West line	County
¹² Dedicated Acres			¹³ Joint or Infill		¹⁴ Consolidation Code		¹⁵ Order No.		

NO ALLOWABLE WILL BE ASSIGNED TO THIS COMPLETION UNTIL ALL INTERESTS HAVE BEEN CONSOLIDATED
OR A NON-STANDARD UNIT HAS BEEN APPROVED BY THE DIVISION

16

FND 2 1/2" BC
GLO 1947

17 OPERATOR CERTIFICATION

I hereby certify that the information contained herein is true and complete to the best of my knowledge and belief, and that this organization either owns a working interest or unleased mineral interest in the land including the proposed bottom hole location or has a right to drill this well at this location pursuant to a contract with an owner of such a mineral or working interest, or to a voluntary pooling agreement or a compulsory pooling order heretofore entered by the division.

 08/22/19
Signature Date

Shaw-Marie N. Ford

Printed Name

sford@djrlc.com

E-mail Address

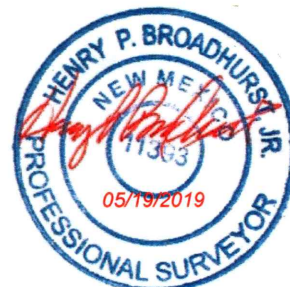
SURVEYOR CERTIFICATION

I hereby certify that the well location shown on this plat was plotted from field notes of actual surveys made by me or under my supervision, and that the same is true and correct to the best of my belief.

MAY 2, 2019

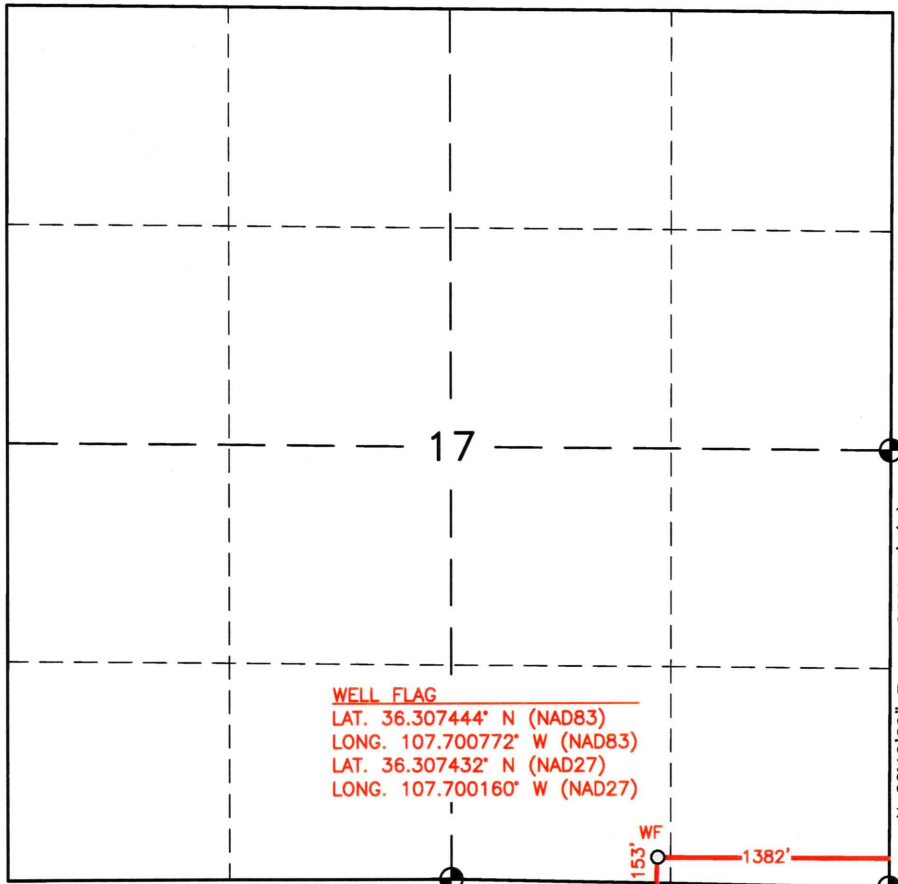
Date of Survey

Signature and Seal of Professional Surveyor:



Certificate Number

11393

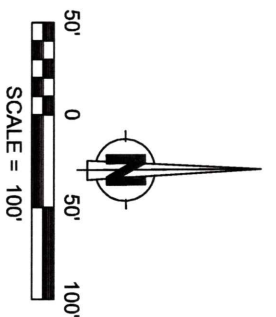


BASIS OF BEARINGS
N 88°44'44" W 2609.92' (M)
N 88°38' W 2609.64' (R)

WELL FLAG
 LATITUDE: 36.307444° N
 LONGITUDE: 107.700772° W
 DATUM: NAD83

DJR OPERATING, LLC
CROW CANYON UNIT WDW #1
AND LIQUID FACILITY

153' FSL & 1382' FEL
 LOCATED IN THE SW/4 SE/4 OF SECTION 17,
 T24N, R8W, N.M.P.M.,
 SAN JUAN COUNTY, NEW MEXICO
 GROUND ELEVATION: 6724', NAVD 88
 FINISHED PAD ELEVATION: 6724.0', NAVD 88



NOTES:

- 1.) BASIS OF BEARING: BETWEEN FOUND MONUMENTS AT THE SOUTHEAST CORNER AND THE SOUTH QUARTER CORNER OF SECTION 17, TOWNSHIP 24 NORTH, RANGE 8 WEST, N.M.P.M., SAN JUAN COUNTY, NEW MEXICO. THE DISTANCE OF 2609.92 FEET AS MEASURED BY G.P.S. LINE BEARS N 87°44'44" W A DISTANCE OF 2609.92 FEET AS MEASURED BY G.P.S.
- 2.) LATITUDE, LONGITUDE AND ELLIPSOIDAL HEIGHT BASED ON AZTEC CORRS L1 PHASE CENTER.
- 3.) DISTANCES SHOWN ARE GROUND DISTANCES USING A TRAVELER MERCATOR PROJECTION AND NAD83+ ELLIPSOID, CONVERTED TO NAD83.
- 4.) NAVD88 ELEVATIONS AS PREDICTED BY GEOID03.
- 5.) LOCATION OF UNDERGROUND UTILITIES DEPICTED ARE APPROXIMATE. PRIOR TO EXCAVATION UNDERGROUND UTILITIES SHOULD BE LOCATED BY FIELD SURVEY. CONSTRUCTION ACTIVITIES SHOULD BE FIELD VERIFIED WITH NEW MEXICO ONE-CALL AUTHORITIES AT LEAST 48 HOURS PRIOR TO CONSTRUCTION.
- 6.) T-POSTS HAVE BEEN SET TO DEFINE THE EDGE OF TOTAL DISTURBANCE LIMITS WHICH ARE SET OFFSETS FROM THE EDGE OF THE STAKED WELL PAD.

~ SURFACE OWNERSHIP ~
BUREAU OF LAND MANAGEMENT

TOTAL PERMITTED AREA
 ±366' x ±383' = 4.32 ACRES
SCALE: 1" = 100'
DATE: 06/07/19
DRAWN BY: GRR



NOTE:
 CHENAULT CONSULTING, INC. IS NOT LIABLE FOR UNDERGROUND UTILITIES OR PIPELINES. CONTRACTOR SHOULD CALL ONE-CALL FOR LOCATION OF ANY MARKED OR UNMARKED, BURIED PIPELINES OR CABLES ON WELL PAD, IN CONSTRUCTION ZONE AND/OR ACCESS ROAD AT LEAST TWO (2) WORKING DAYS PRIOR TO CONSTRUCTION.

DJR OPERATING, LLC

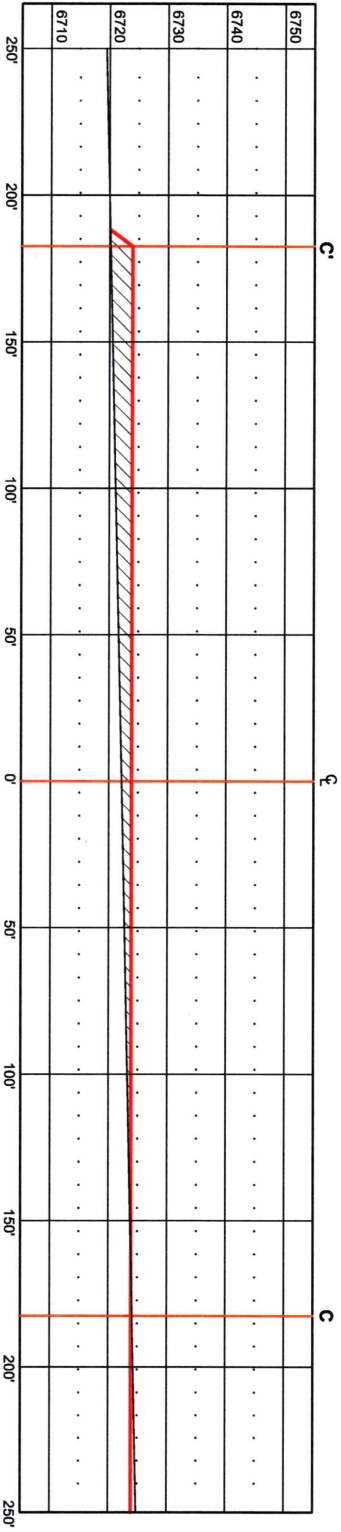
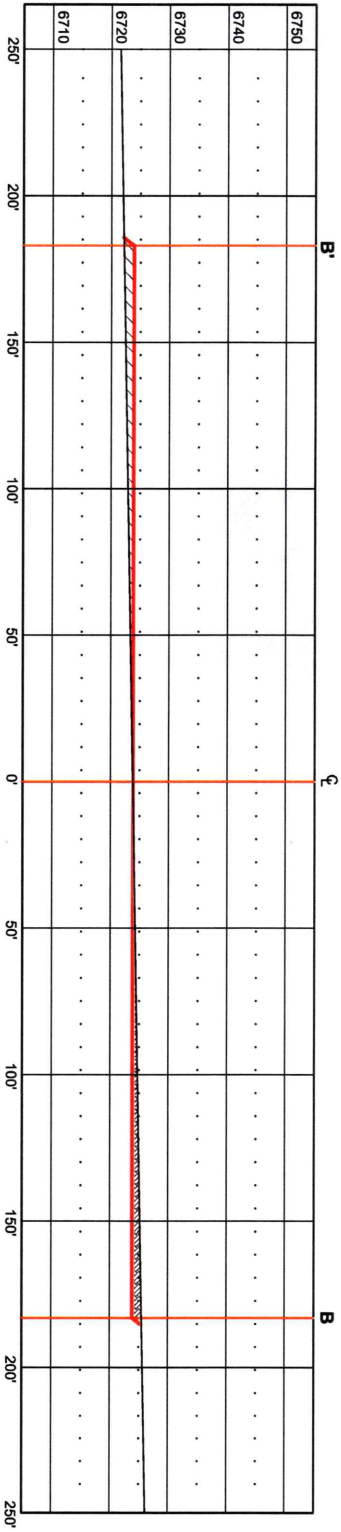
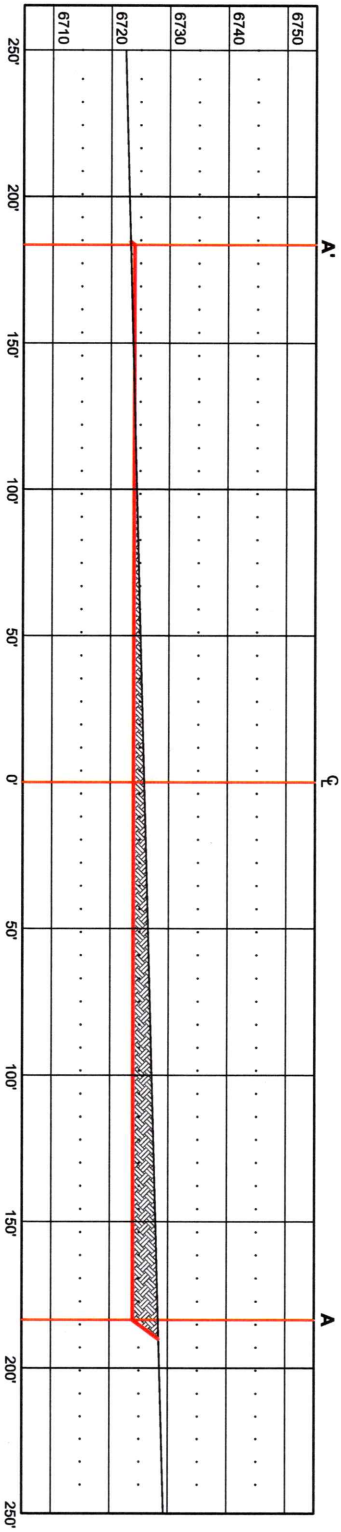
CGI
 CHENAULT CONSULTING INC.
 4800 COLLIER BLVD.
 SUITE 201
 FARMINGTON, NM 87402
 (505) 325-7707

WELL FLAG
 LATITUDE: 36.307444° N
 LONGITUDE: 107.700772° W
 DATUM: NAD83

DIR OPERATING, LLC
CROW CANYON UNIT WDW #1
AND LIQUID FACILITY

153' FSL & 1382' FEL
 LOCATED IN THE SW/4 SE/4 OF SECTION 17,
 T24N, R8W, N.M.P.M.,
 SAN JUAN COUNTY, NEW MEXICO
 GROUND ELEVATION: 6724', NAVD 88
 FINISHED PAD ELEVATION: 6724.0', NAVD 88

THIS DIAGRAM IS AN ESTIMATE
 OF DIRT BALANCE AND IS NOT
 INTENDED TO BE AN EXACT
 MEASURE OF VOLUME



DIR OPERATING, LLC



VERT. SCALE: 1" = 30'
 HORZ. SCALE: 1" = 60'
 DATE: 06/07/19
 DRAWN BY: GRR

CCI
CHEMULUT CONSULTING INC.
 4600 COLLEGE BLVD.
 SUITE 201
 FARMINGTON, NM 87402
 (505) 325-7707

WELL FLAG

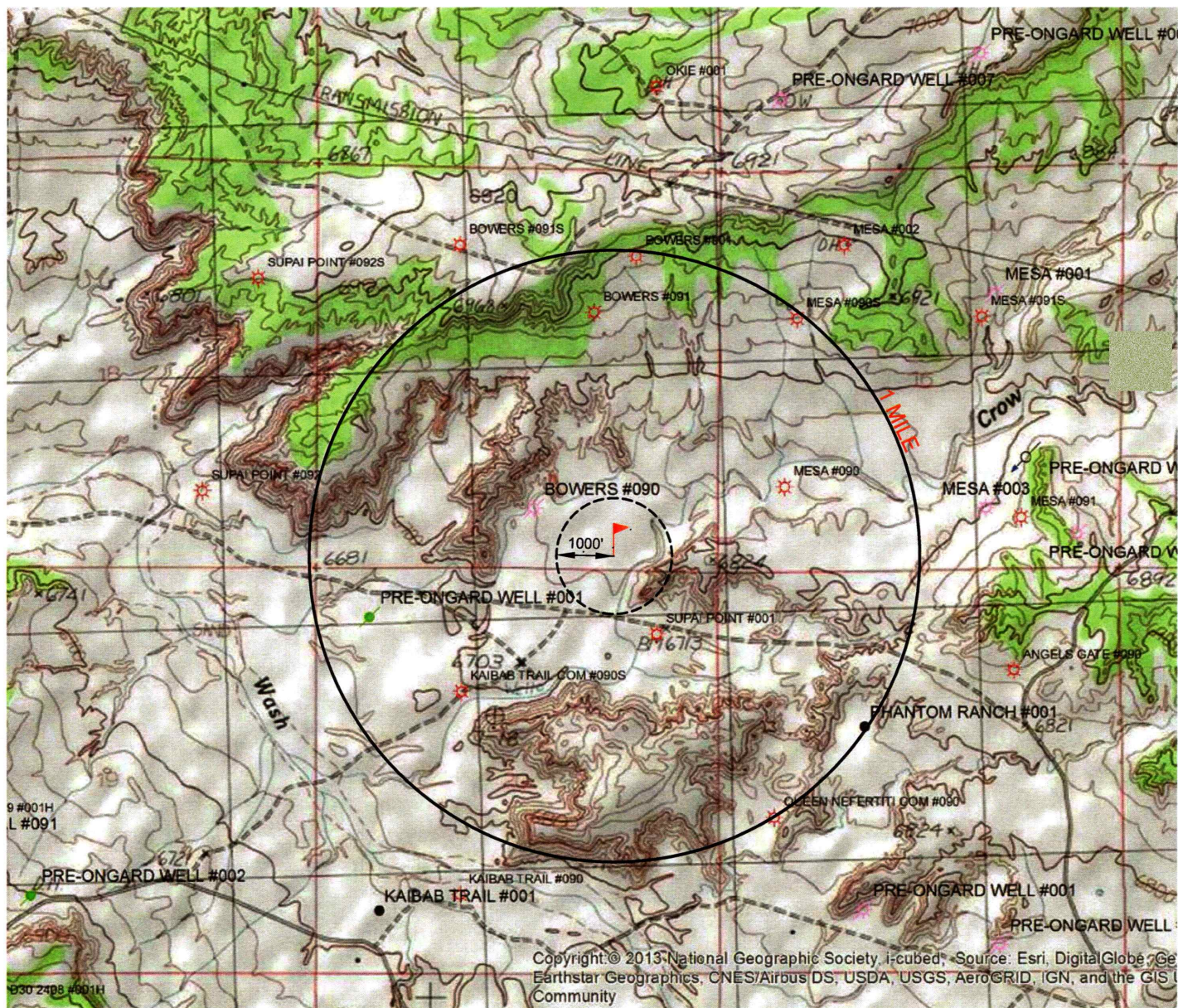
LATITUDE: 36.307444° N
LONGITUDE: 107.700772° W
DATUM: NAD83

DJR OPERATING, LLC
CROW CANYON UNIT WDW #1
AND LIQUID FACILITY

153' FSL & 1382' FEL
LOCATED IN THE SW/4 SE/4 OF SECTION 17,
T24N, R8W, N.M.P.M.,
SAN JUAN COUNTY, NEW MEXICO

WELL LOCATION MAP**WELL LEGEND**

- ★ GAS
- ★ ABANDONED GAS
- ★ INJECTION
- ★ ABANDONED
- OIL
- ★ ABANDONED OIL
- ★ SALT WATER INJECTION
- ★ ABANDONED SALT WATER INJ



DATE: 05/09/19
DRAWN BY: GRR

DJR OPERATING, LLC



0 .25 .5
SCALE = 1" = 1/2 MILE

CCI

CHENAULT CONSULTING INC.

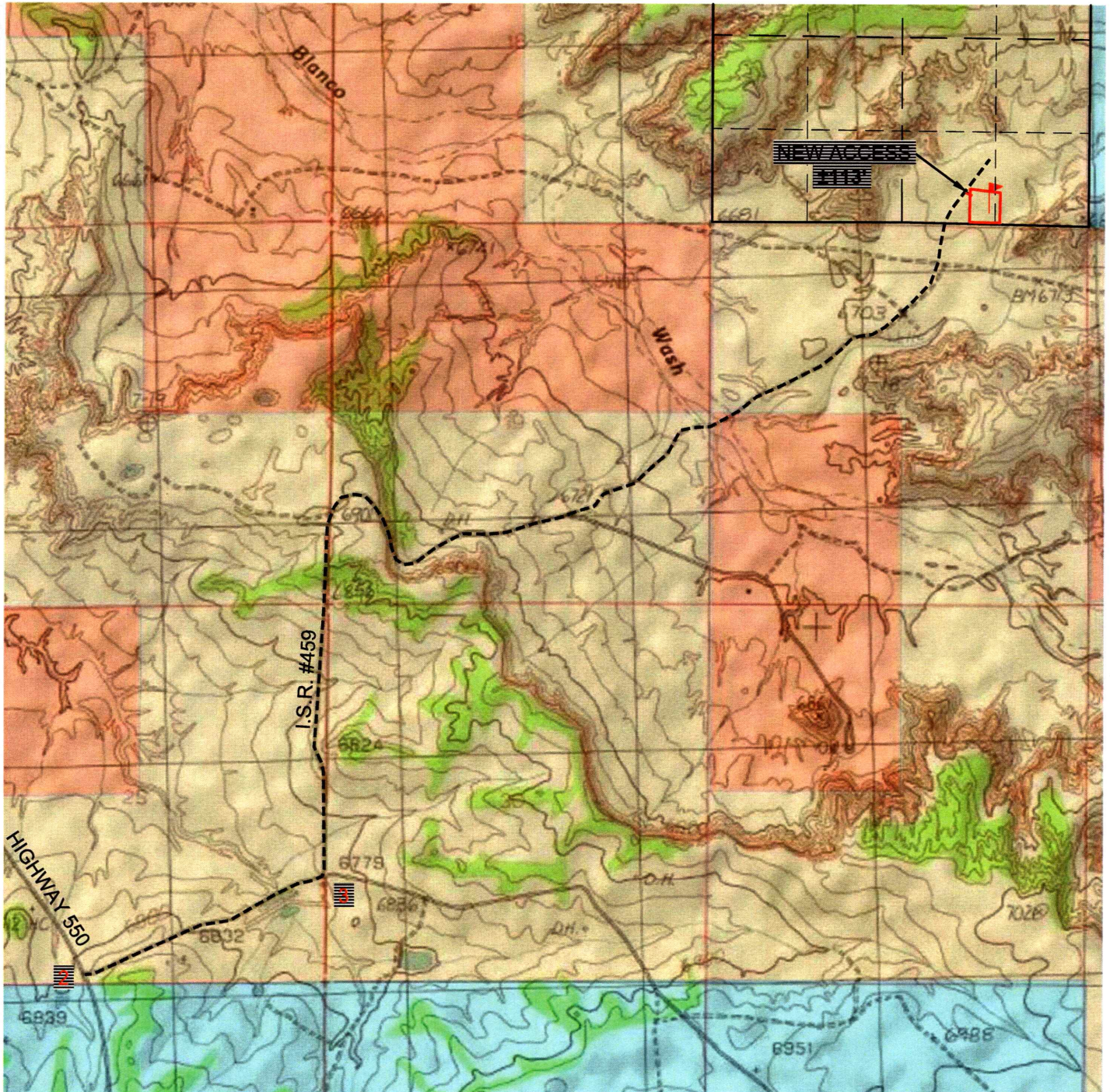
4800 COLLEGE BLVD.
SUITE 201
FARMINGTON, NM 87402
(505) 325-7707

WELL FLAG

LATITUDE: 36.307444° N
LONGITUDE: 107.700772° W
DATUM: NAD83

DJR OPERATING, LLC
CROW CANYON UNIT WDW #1
AND LIQUID FACILITY

153' FSL & 1382' FEL
LOCATED IN THE SW/4 SE/4 OF SECTION 17,
T24N, R8W, N.M.P.M.,
SAN JUAN COUNTY, NEW MEXICO
113' OF NEW ACCESS ACROSS BLM LANDS



U.S.G.S. QUAD: CROW MESA, WEST
SCALE: 1" = 2000' (1:24,000)
DATE: 06/07/19
DRAWN BY: GRR

CROW CANYON UNIT WDW #1
AND LIQUID FACILITY
NEW ACCESS

STA. 0+00 24" CMP
STA. 1+12 24" CMP

CCI

CHENAULT CONSULTING INC.

4800 COLLEGE BLVD.
SUITE 201
FARMINGTON, NM. 87402
(505)-325-7707

 **DJR OPERATING, LLC**

WELL FLAG

LATITUDE: 36.307444° N
LONGITUDE: 107.700772° W
DATUM: NAD83

DJR OPERATING, LLC
**CROW CANYON UNIT WDW #1
AND LIQUID FACILITY**

153' FSL & 1382' FEL
LOCATED IN THE SW/4 SE/4 OF SECTION 17,
T24N, R8W, N.M.P.M.,
SAN JUAN COUNTY, NEW MEXICO

DIRECTIONS

- 1) FROM THE INTERSECTION OF HWY 64 & HWY 550 IN BLOOMFIELD, GO SOUTH ON HWY 550, 35.0 MILES TO INDIAN ROUTE 459 (M.P. 116.6).
- 2) TURN LEFT ONTO I.S.R. 459 AND GO 0.7 MILES TO A "Y" INTERSECTION.
- 3) CONTINUE LEFT ON I.S.R. 459;
CROSS A CATTLE GUARD AT 0.9 MILES
CROSS BLANCO WASH AT 2.2 MILES
CLOSED GATE AT 3.1 MILES
ACCESS IS STAKED ON THE RIGHT SIDE OF THE ROAD AT 3.2 MILES.

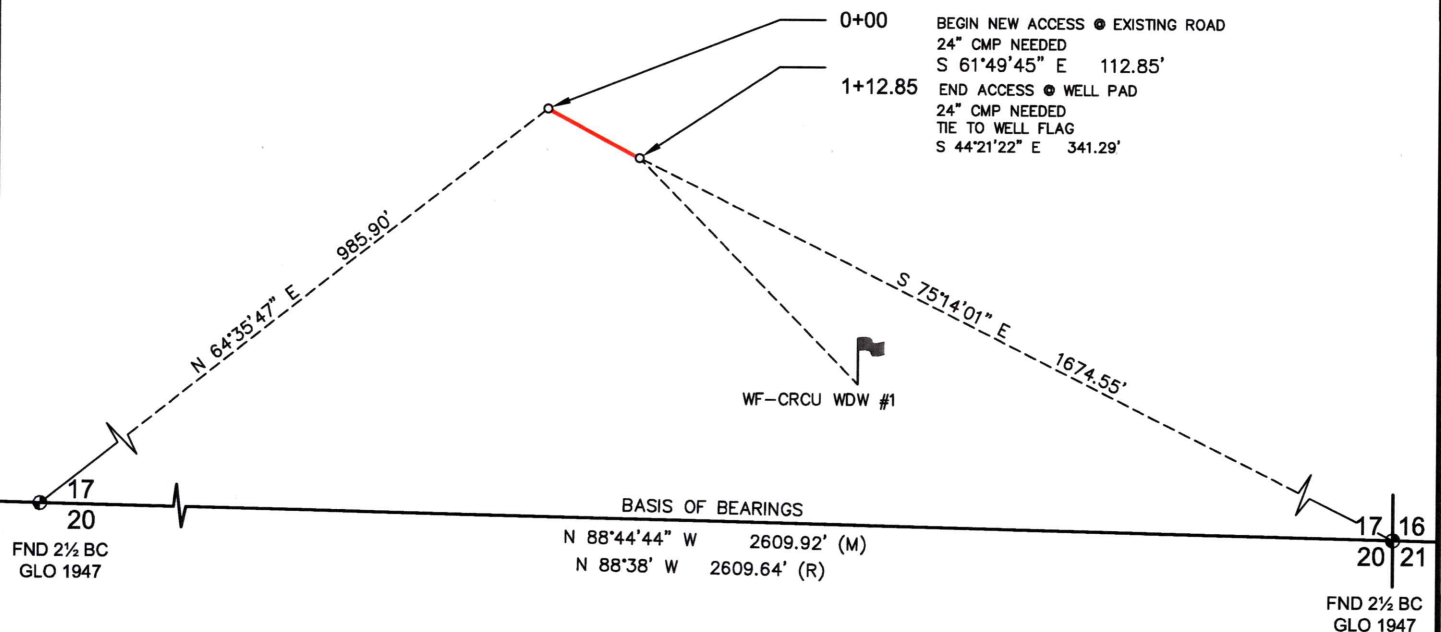
WELL FLAG LOCATED AT LAT. 36.307444° N, LONG. 107.700772° W (NAD 83).

PROPOSED ACCESS FOR
DJR OPERATING, LLC
CROW CANYON UNIT WDW #1
AND LIQUID FACILITY
LOCATED IN THE SW/4 SE/4 OF SECTION 17,
T24N, R8W, N.M.P.M.,
SAN JUAN COUNTY, NEW MEXICO



100' 0 100' 200'
SCALE: 1" = 200'

SW/4 SE/4
SECTION 17
BLM LAND



NOTES

- 1) BASIS OF BEARINGS FOR THIS SURVEY ARE BETWEEN FOUND MONUMENTS AT THE SOUTHEAST CORNER AND THE SOUTH QUARTER CORNER OF SECTION 17, TOWNSHIP 24 NORTH, RANGE 8 WEST, N.M.P.M., SAN JUAN COUNTY, NEW MEXICO LINE BEARS: N 88°44'44" W 2609.92'
- 2) DATE OF FIELD SURVEY: JUNE, 2019.
- 3) THIS EXHIBIT IS NOT A BOUNDARY SURVEY AND SHOULD NOT BE USED AS SUCH.
- 4) THIS EXHIBIT MAY NOT SHOW ALL EXISTING EASEMENTS AND UTILITIES.
- 5) CALL THE NEW MEXICO 811 SYSTEM FOR UTILITY LOCATIONS BEFORE EXCAVATING OR DIGGING.

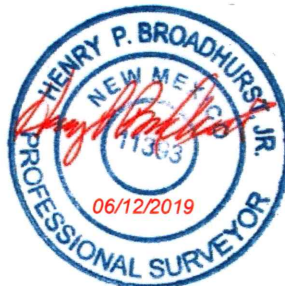
PREPARED BY:

CCI

CHENAULT CONSULTING INC.

4800 COLLEGE BLVD #105
FARMINGTON, NM 87402
(505) 325-7707

I, HENRY P. BROADHURST, JR., A NEW MEXICO REGISTERED PROFESSIONAL SURVEYOR CERTIFY THAT I CONDUCTED AND AM RESPONSIBLE FOR THIS SURVEY, THAT THIS SURVEY IS TRUE AND CORRECT TO THE BEST OF MY KNOWLEDGE AND BELIEF, AND THAT THIS SURVEY AND PLAT MEET THE MINIMUM STANDARDS FOR SURVEYING IN NEW MEXICO.



~ SURFACE OWNERSHIP ~
BUREAU OF LAND MANAGEMENT

SECTION 17, T24N, R8W
0+00 TO 1+12.85
112.85 FT / 6.84 RODS

DATE OF SURVEY 06/03/19 JC

DRAWING: CRCU WDW #1_REV1

SCALE: 1" = 200' REV. 1 06/07/2019

DRAFTED BY: GRR

SHEET: 1 of 1

DJR OPERATING, LLC