

# Application

Received: 10/18/2019

*This application is placed in file for record. It MAY or MAY NOT have been reviewed to be determined Administratively Complete*

UUSH8-191018-C-107B 620

Revised March 23, 2017

RECEIVED: 10/18/19	REVIEWER: DM	TYPE: PLC	APP NO: pDM1929654088
--------------------	--------------	-----------	-----------------------

ABOVE THIS TABLE FOR OCD DIVISION USE ONLY

**NEW MEXICO OIL CONSERVATION DIVISION**  
 - Geological & Engineering Bureau -  
 1220 South St. Francis Drive, Santa Fe, NM 87505

**ADMINISTRATIVE APPLICATION CHECKLIST**

THIS CHECKLIST IS MANDATORY FOR ALL ADMINISTRATIVE APPLICATIONS FOR EXCEPTIONS TO DIVISION RULES AND  
 REGULATIONS WHICH REQUIRE PROCESSING AT THE DIVISION LEVEL IN SANTA FE

**Applicant:** EOG Resources, Inc. **OGRID Number:** 7377  
**Well Name:** Hemlock 32 State 701H & Others **API:** 30-025-44343  
**Pool:** WC-025 G-09 S243310P; Upper Wolfcamp & others **Pool Code:** 98135

**SUBMIT ACCURATE AND COMPLETE INFORMATION REQUIRED TO PROCESS THE TYPE OF APPLICATION  
 INDICATED BELOW**

**1) TYPE OF APPLICATION:** Check those which apply for [A]

A. Location – Spacing Unit – Simultaneous Dedication

☐ NSL☐ NSP (PROJECT AREA)☐ NSP (PRORATION UNIT)☐ SD

B. Check one only for [I] or [II]

[I] Commingling – Storage – Measurement

☐ DHC☐ CTB☒ PLC☐ PC☐ OLS☐ OLM

[II] Injection – Disposal – Pressure Increase – Enhanced Oil Recovery

☐ WFX☐ PMX☐ SWD☐ IPI☐ EOR☐ PPR**2) NOTIFICATION REQUIRED TO:** Check those which apply.A. ☐ Offset operators or lease holdersB. ☒ Royalty, overriding royalty owners, revenue ownersC. ☐ Application requires published noticeD. ☒ Notification and/or concurrent approval by SLOE. ☐ Notification and/or concurrent approval by BLMF. ☐ Surface ownerG. ☐ For all of the above, proof of notification or publication is attached, and/or,H. ☐ No notice required**FOR OCD ONLY**☐

Notice Complete

☐Application  
Content  
Complete

**3) CERTIFICATION:** I hereby certify that the information submitted with this application for administrative approval is **accurate** and **complete** to the best of my knowledge. I also understand that **no action** will be taken on this application until the required information and notifications are submitted to the Division.

**Note: Statement must be completed by an individual with managerial and/or supervisory capacity.**

**Sarah Mitchell**

Print or Type Name

Date

10/18/19

432-848-9133

Phone Number

Sarah\_mitchell@eogresources.com

e-mail Address

Signature

District I  
1625 N. French Drive, Hobbs, NM 88240  
District II  
811 S. First St., Artesia, NM 88210  
District III  
1000 Rio Brazos Road, Aztec, NM 87410  
District IV  
1220 S. St Francis Dr, Santa Fe, NM  
87505

State of New Mexico  
Energy, Minerals and Natural Resources Department

Form C-107-B  
Revised August 1, 2011

### OIL CONSERVATION DIVISION

1220 S. St Francis Drive  
Santa Fe, New Mexico 87505

Submit the original  
application to the Santa Fe  
office with one copy to the  
appropriate District Office.

#### APPLICATION FOR SURFACE COMMINGLING (DIVERSE OWNERSHIP)

OPERATOR NAME: EOG Resources, Inc.

OPERATOR ADDRESS: P.O. Box 2267 Midland, Texas 79702

APPLICATION TYPE:

☐ Pool Commingling ☐ Lease Commingling ☒ Pool and Lease Commingling ☐ Off-Lease Storage and Measurement (Only if not Surface Commingled)

LEASE TYPE: ☐ Fee ☒ State ☐ Federal

Is this an Amendment to existing Order? ☒ Yes ☐ No If "Yes", please include the appropriate Order No. CTB-903

Have the Bureau of Land Management (BLM) and State Land office (SLO) been notified in writing of the proposed commingling

☒ Yes ☐ No

#### (A) POOL COMMINGLING

Please attach sheets with the following information

(1) Pool Names and Codes	Gravities / BTU of Non-Commingled Production	Calculated Gravities / BTU of Commingled Production		Calculated Value of Commingled Production	Volumes
Please see attached.					

(2) Are any wells producing at top allowables? ☐ Yes ☐ No

(3) Has all interest owners been notified by certified mail of the proposed commingling? ☐ Yes ☐ No.

(4) Measurement type: ☐ Metering ☐ Other (Specify)

(5) Will commingling decrease the value of production? ☐ Yes ☐ No If "yes", describe why commingling should be approved

#### (B) LEASE COMMINGLING

Please attach sheets with the following information

(1) Pool Name and Code.

(2) Is all production from same source of supply? ☐ Yes ☐ No

(3) Has all interest owners been notified by certified mail of the proposed commingling? ☐ Yes ☐ No

(4) Measurement type: ☐ Metering ☐ Other (Specify)

#### (C) POOL and LEASE COMMINGLING

Please attach sheets with the following information

(1) Complete Sections A and E.

#### (D) OFF-LEASE STORAGE and MEASUREMENT

Please attach sheets with the following information

(1) Is all production from same source of supply? ☐ Yes ☐ No

(2) Include proof of notice to all interest owners.

#### (E) ADDITIONAL INFORMATION (for all application types)

Please attach sheets with the following information

(1) A schematic diagram of facility, including legal location.

(2) A plat with lease boundaries showing all well and facility locations. Include lease numbers if Federal or State lands are involved.

(3) Lease Names, Lease and Well Numbers, and API Numbers.

I hereby certify that the information above is true and complete to the best of my knowledge and belief.

SIGNATURE: Sarah Mitchell

TITLE: Regulatory Contractor

DATE: 10/18/19

TYPE OR PRINT NAME Sarah Mitchell

TELEPHONE NO.: 432-848-9133

E-MAIL ADDRESS: sarah\_mitchell@eogresources.com

## APPLICATION FOR SURFACE POOL/LEASE COMMINGLING

EOG Resources, Inc. ("EOG") respectfully requests approval to surface lease commingle oil & gas from the following wells:

Well Name	Location	API #	Pool	Oil BPD	Gravities	MSCFPD	BTU
HEMLOCK 32 STATE #701H	M-32-T23S-R33E	30-025-44343	WC-025 G-09 S243310P; Upper Wolfcamp [98135]	498.05	48.9	1128.7	1250.3
HEMLOCK 32 STATE #702H	M-32-T23S-R33E	30-025-44344	WC-025 G-09 S243310P; Upper Wolfcamp [98135]	424.64	47.5	985.5	1254.1
YARROW 32 STATE #701H	P-32-T23S-R33E	30-025-45269	WC-025 G-09 S243310P; Upper Wolfcamp [98135]	497.86	47	1129.84	1268.3
YARROW 32 STATE #702H	P-32-T23S-R33E	30-025-45270	WC-025 G-09 S243310P; Upper Wolfcamp [98135]	624.57	47.7	1370.32	1258.3
YARROW 32 STATE #703H	O-32-T23S-R33E	30-025-45271	WC-025 G-09 S243310P; Upper Wolfcamp [98135]	1238	54.4	2849	1298
YARROW 32 STATE #704H	O-32-T23S-R33E	30-025-45272	WC-025 G-09 S243310P; Upper Wolfcamp [98135]	1334	54.3	3042	1298
HEMLOCK 32 STATE #703H	N-32-T23S-R33E	30-025-45523	WC-025 G-09 S243310P; Upper Wolfcamp [98135]	1111	54.7	2499	1298
HEMLOCK 32 STATE #704H	N-32-T23S-R33E	30-025-45516	WC-025 G-09 S243310P; Upper Wolfcamp [98135]	1229	54.8	2652	1298
YARROW 32 STATE #201H	P-32-T23S-R33E	30-025-45272	Triple X; Bone Spring [59900]	*1084	*44	*2290	*1333
YARROW 32 STATE #202H	P-32-T23S-R33E	30-025-45273	Triple X; Bone Spring [59900]	*1084	*44	*2290	*1333
YARROW 32 STATE #203H	O-32-T23S-R33E	30-025-45274	Triple X; Bone Spring [59900]	*1084	*44	*2290	*1333
YARROW 32 STATE #204H	O-32-T23S-R33E	30-025-45275	Triple X; Bone Spring [59900]	*1084	*44	*2290	*1333

\*projected, pending completion

### **GENERAL INFORMATION :**

- State of New Mexico Lease VB-1169-0001 covers 320.00 acres, being the W/2 of Section 32 in Township 23 South, Range 33 East, Lea County, New Mexico.
- State of New Mexico Lease V0-6276-0001 covers 320.00 acres, being the E/2 of Section 32 in Township 23 South, Range 33 East, Lea County, New Mexico.
- The central tank battery to service the subject wells is located in the SW/4 (Units M and N) of Section 32-T23S-R33E on State of New Mexico Lease VB-1169-0001.
- An application to commingle production from the subject wells is being submitted to the NMOCD and the New Mexico State Land Office.

- Enclosed herewith is (1) a map that displays the leases, the location of the subject wells, and the proposed CTB, (2) a process flow diagram, (3) and the C-102 plat for each of the wells.

### **FUTURE ADDITIONS**

Pursuant to Statewide rule 19.15.12.10(C)(4)(g) EOG Resources, Inc. respectfully requests the option to include additional pools or leases within the defined parameters set forth in the order for future additions.

### **PROCESS AND FLOW DESCRIPTIONS**

The production from each well will flow into a dedicated 3-phase separator. The production stream will be separated into 3 independent streams (gas, oil, and water) by the separator and each stream will be measured individually after it exits the separator. The gas will be measured using a senior orifice meter and used to allocate total volume measured at the facility check meter, high pressure flare meter, and low pressure flare meter.

Hemlock 32 State #701H gas allocation meter is an Emerson orifice meter (S/N 67636401)  
Hemlock 32 State #702H gas allocation meter is an Emerson orifice meter (S/N 67636402)  
Hemlock 32 State #703H gas allocation meter is an Emerson orifice meter (S/N 67636405)  
Hemlock 32 State #704H gas allocation meter is an Emerson orifice meter (S/N 67636406)  
Yarrow 32 State #701H gas allocation meter is an Emerson orifice meter (S/N 67636403)  
Yarrow 32 State #702H gas allocation meter is an Emerson orifice meter (S/N 67636404)  
Yarrow 32 State #703H gas allocation meter is an Emerson orifice meter (S/N 67636407)  
Yarrow 32 State #704H gas allocation meter is an Emerson orifice meter (S/N 67636408)  
Yarrow 32 State #201H gas allocation meter is an Emerson orifice meter (S/N \*11111111)  
Yarrow 32 State #202H gas allocation meter is an Emerson orifice meter (S/N \*11111111)  
Yarrow 32 State #203H gas allocation meter is an Emerson orifice meter (S/N \*11111111)  
Yarrow 32 State #204H gas allocation meter is an Emerson orifice meter (S/N \*11111111)

The oil from the separators will be measured using a Coriolis meter.

Hemlock 32 State #701H oil allocation meter is a FMC Coriolis meter (S/N 10-74567)  
Hemlock 32 State #702H oil allocation meter is a FMC Coriolis meter (S/N 10-74568)  
Hemlock 32 State #703H oil allocation meter is a FMC Coriolis meter (S/N 10-76066)  
Hemlock 32 State #704H oil allocation meter is a FMC Coriolis meter (S/N 10-76067)  
Yarrow 32 State #701H oil allocation meter is a FMC Coriolis meter (S/N 10-76069)  
Yarrow 32 State #702H oil allocation meter is a FMC Coriolis meter (S/N 10-76070)  
Yarrow 32 State #703H oil allocation meter is a FMC Coriolis meter (S/N 10-76071)  
Yarrow 32 State #704H oil allocation meter is a FMC Coriolis meter (S/N 10-76072)  
Yarrow 32 State #201H oil allocation meter is a FMC Coriolis meter (S/N \*11111111)  
Yarrow 32 State #202H oil allocation meter is a FMC Coriolis meter (S/N \*11111111)  
Yarrow 32 State #203H oil allocation meter is a FMC Coriolis meter (S/N \*11111111)  
Yarrow 32 State #204H oil allocation meter is a FMC Coriolis meter (S/N \*11111111)

The flash gas to sales that separates from the oil in the low pressure separators after it has passed the individual well oil allocation meters will be metered using a senior orifice meter and allocated back to the wells based on the individual well oil allocation meters.

HEMLOCK 32 STATE CTB FG #1 gas allocation meter is an Emerson orifice meter (S/N 67636441)

HEMLOCK 32 STATE CTB FG #2 gas allocation meter is an Emerson orifice meter (S/N 67636442)

The water will be measured using a vortex meter. The water from each separator is combined in a common header and flows into (4) 400 barrel coated steel tanks. Guided wave radar is used to measure water volumes in these tanks. The oil from each separator will be combined into a common header and flow into a heated horizontal separator (HHS) to aid separation of water entrained in the oil. Water from the heated separator flows into the common water header connected to the (4) 400 barrel water tanks. The water is then pumped and/or trucked to a salt water disposal well. The oil from the heated separator flows through a vapor recovery tower (VRT) where gas is allowed to breakout at a lower pressure, and then the oil flows into (8) 400 barrel coated steel tanks. Guided wave radar is used to measure water and oil volumes in these tanks. Oil is pumped out of the tanks through a Coriolis meter into a truck or a pipeline. Every tank utilizes a guided wave radar to determine the volume of product in each. After the gas from each separator is measured it is combined into a common header. The gas from the heated separator also flows into this header. The gas flows through the header to a custody transfer orifice meter (#67636451) that serves as our lease production meter. If the pipeline is experiencing problems and cannot take any gas, the gas will flow through the high pressure flare meter (#67636456) to the flare. If an individual well needed to be flared for any operation reason it will be manually routed through the individual well flare meter (#67636457) to the flare. The overhead gas from the vapor recovery tower is compressed by a vapor recovery compressor and then measured by a custody transfer Emerson orifice meter (#67636486). The gas from the vapor recovery system combines with the gas from the lease production meter and flows into our gas gathering pipeline system.

\*Meter numbers will be provided upon installation of meters and completion of the facility.





P.O. Box 2267, Midland, Texas 79702  
Phone: (432) 848-9120

Date: October 18, 2019

To: State of New Mexico Oil Conservation Division  
New Mexico State Land Office

Re: Surface Pool/Lease Commingling Application; Hemlock 32 State 701H, 702H, 703H, 704H, Yarrow 32 State 701H, 702H, 703H, 704H, 201H, 202H, 203H, 204H

To whom it may concern:

This letter serves to notice you that the ownership in the production of the following wells is Diverse as defined in 19.15.12.7 A. NMAC:

Well Name	Location	API #	Pool	Status
HEMLOCK 32 STATE #701H	M-32-T23S-R33E	30-025-44343	WC-025 G-09 S243310P; Upper Wolfcamp [98135]	Producing
HEMLOCK 32 STATE #702H	M-32-T23S-R33E	30-025-44344	WC-025 G-09 S243310P; Upper Wolfcamp [98135]	Producing
YARROW 32 STATE #701H	P-32-T23S-R33E	30-025-45269	WC-025 G-09 S243310P; Upper Wolfcamp [98135]	Producing
YARROW 32 STATE #702H	P-32-T23S-R33E	30-025-45270	WC-025 G-09 S243310P; Upper Wolfcamp [98135]	Producing
YARROW 32 STATE #703H	O-32-T23S-R33E	30-025-45271	WC-025 G-09 S243310P; Upper Wolfcamp [98135]	Producing
YARROW 32 STATE #704H	O-32-T23S-R33E	30-025-45272	WC-025 G-09 S243310P; Upper Wolfcamp [98135]	Producing
HEMLOCK 32 STATE #703H	N-32-T23S-R33E	30-025-45523	WC-025 G-09 S243310P; Upper Wolfcamp [98135]	Producing
HEMLOCK 32 STATE #704H	N-32-T23S-R33E	30-025-45516	WC-025 G-09 S243310P; Upper Wolfcamp [98135]	Producing
YARROW 32 STATE #201H	P-32-T23S-R33E	30-025-46272	Triple X; Bone Spring [59900]	Permitted
YARROW 32 STATE #202H	P-32-T23S-R33E	30-025-46273	Triple X; Bone Spring [59900]	Permitted
YARROW 32 STATE #203H	O-32-T23S-R33E	30-025-46274	Triple X; Bone Spring [59900]	Permitted
YARROW 32 STATE #204H	O-32-T23S-R33E	30-025-46275	Triple X; Bone Spring [59900]	Permitted

The royalty, overrides and working interest are diverse on a well by well basis. All owners are listed on Exhibit A, attached hereto.

I certify that this information is true and correct to the best of my knowledge.

Sincerely,

Chloe Sawtelle  
Landman II  
EOG Resources, Inc.

Commingling Application for Hemlock 32 State CTB  
EOG Resources, Inc.  
EXHIBIT A- Notice List

New Mexico Oil Conservation Division  
Attn: Mr. Dean McClure  
Via OCD Online

New Mexico Oil Conservation Division  
Attn: Mr. Paul Kautz  
1625 N. French Drive  
Hobbs, New Mexico 88240  
7018 0680 0002 2690 7389

Commissioner of Public Lands  
Attn: Commingling Manager  
P.O. Box 1148  
Santa Fe, NM 87504-1148  
7018 0680 0002 2690 7365

Sharbro Energy LLC  
PO Box 840  
Artesia, New Mexico 88211-0840  
7018 0680 0002 2690 7358

Oxy Y 1 Company  
PO Box 27570  
Houston, Texas 77227-7570  
7018 0680 0002 2690 7372

EOG Resources, Inc.  
P.O. Box 2267  
Midland, Texas 79702

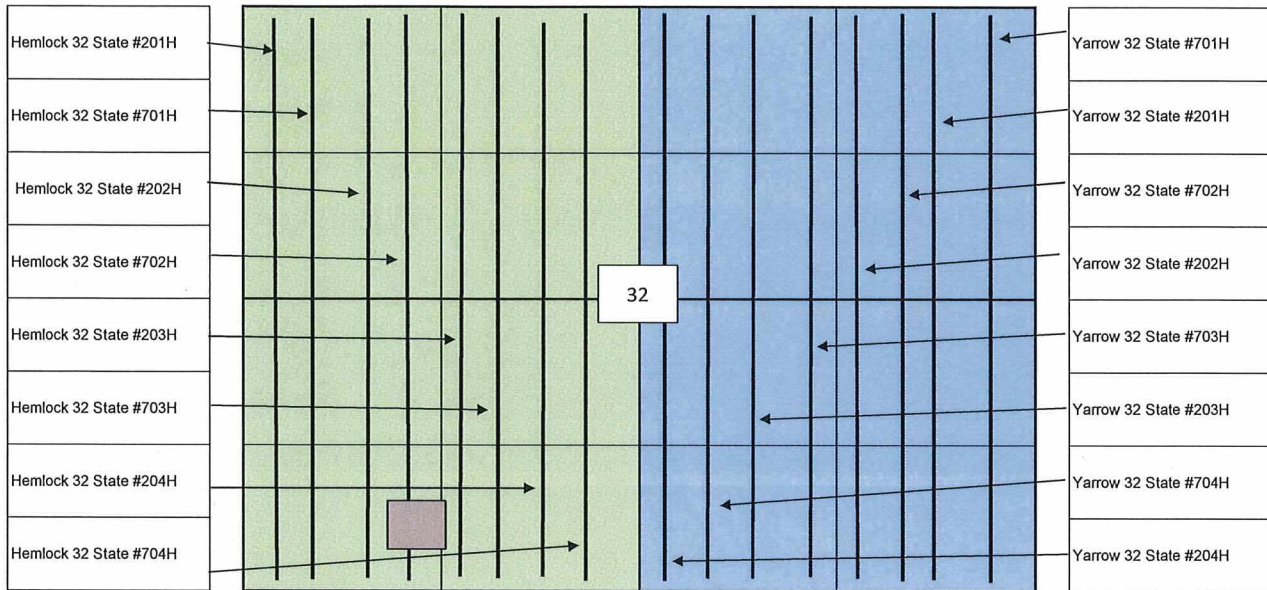
Copies of this application were mailed to the following individuals, companies, and organizations  
on or before October 18, 2019.

  
\_\_\_\_\_  
Sarah Mitchell

EOG Resources, Inc.



Township 23 South, Range 33 East, NMPM, Lea County, NM  
Section 32



Hemlock 32 State CTB



ST NM VB-1169-1



ST NM VO-6276

1. Hemlock 32 State #201H
2. Hemlock 32 State #701H
3. Hemlock 32 State #202H
4. Hemlock 32 State #702H
5. Hemlock 32 State #203H
6. Hemlock 32 State #703H
7. Hemlock 32 State #204H
8. Hemlock 32 State #704H
9. Hemlock 32 State #205H

1. Yarrow 32 State #701H
2. Yarrow 32 State #201H
3. Yarrow 32 State #702H
4. Yarrow 32 State #202H
5. Yarrow 32 State #703H
6. Yarrow 32 State #203H
7. Yarrow 32 State #704H
8. Yarrow 32 State #204H



P.O. Box 2267, Midland, Texas 79702  
Phone: (432) 848-9133

*Certified Mail-Return Receipt*

Date: October 18, 2019

Re: EOG Resources, Inc. Application to Commingle  
Surface Lease Commingling Application; Hemlock 32 State 701H, 702H,  
703H, 704H, Yarrow 32 State 701H, 702H, 703H, 704H, 201H, 202H,  
203H, 204H at the Hemlock 32 State CTB

Dear Sir/Madam:

Enclosed please find EOG Resources, Inc.'s application to commingle production at its Hemlock State Central Tank Battery located in Lea County, New Mexico, filed this date with the New Mexico Oil Conservation Division (NMOCD) and the New Mexico State Land Office.

Any objections or requests for a hearing regarding this application must be submitted to the New Mexico Oil Conservation Division Santa Fe Office within 20 Days from the date the Division received this application.

Pursuant to Statewide rule 19.15.12.10(C)(4)(g) EOG Resources, Inc. requests the option to include additional pools or leases within the defined parameters set forth in the order for future additions.

For questions regarding this application, please contact me at 432-848-9133 or [sarah\\_mitchell@eogresources.com](mailto:sarah_mitchell@eogresources.com)

Kind regards,

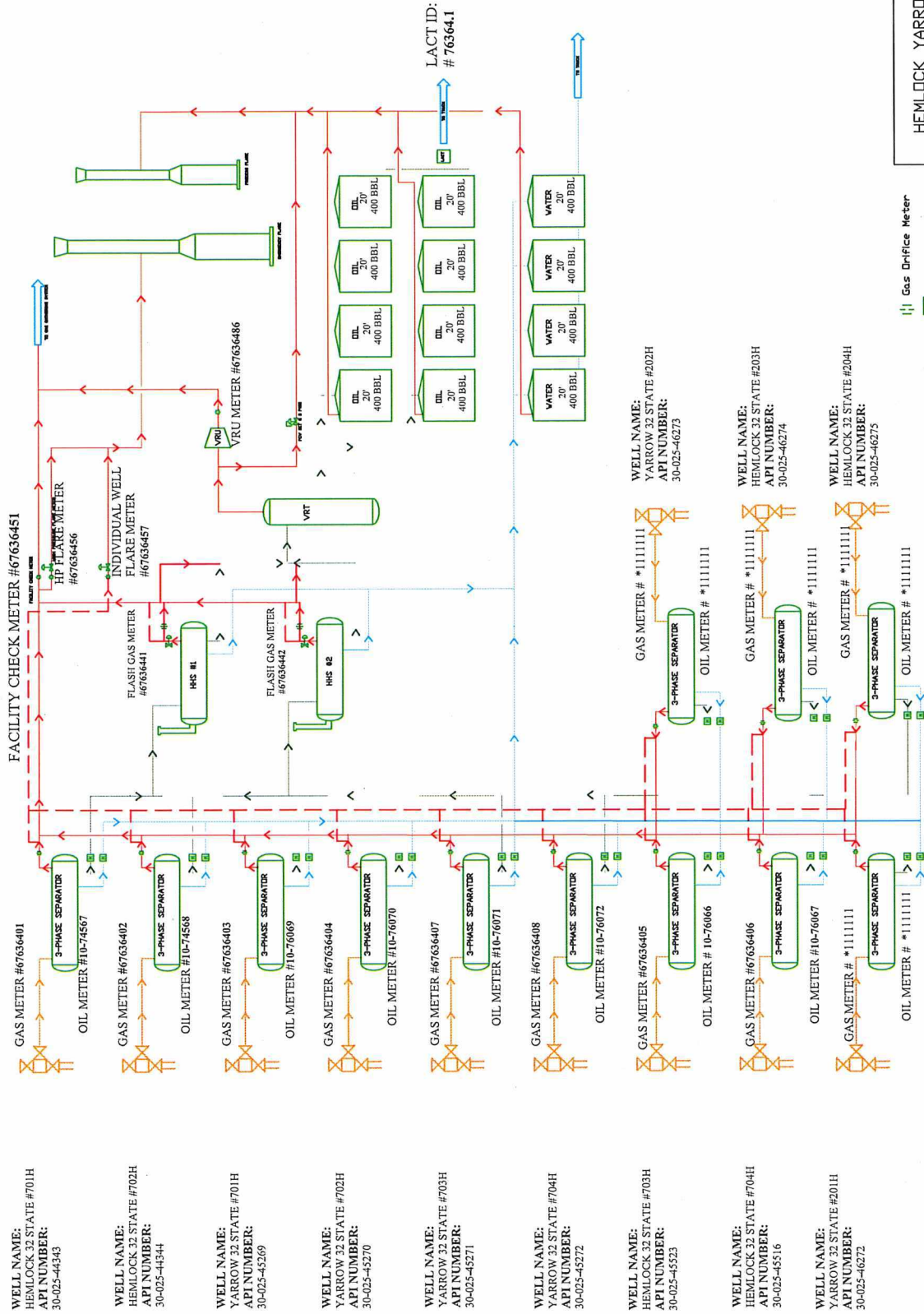
**EOG Resources, Inc.**

By: \_\_\_\_\_

  
Sarah Mitchell

Regulatory Contractor

# FACILITY NAME: HEMLOCK YARROW 32 STATE CTB



\*Test meter numbers will be provided upon installation of meters and completion of the facility.

HEMLOCK YARROW CTB PROCESS FLOW	
EDG RESOURCES MIDLAND DIVISION	BY: ARC
rev. 04 10/18/2019	

APPLICATION FOR, COMMINGLING AT A COMMON CENTRAL TANK BATTERY

Proposal for **HEMLOCK 32 CTB**:

EOG Resources, Inc. is requesting approval to commingle the following wells in a common central tank battery:

**State of New Mexico Leases: VB-1169-1, VO-6276-1**

Well Name	Location	API #	Pool	Oil BPD	Gravities	MSCFPD	BTU
HEMLOCK 32 STATE #701H	M-32-T23S-R33E	30-025-44343	WC-025 G-09 S243310P; Upper Wolfcamp [98135]	498.05	48.9	1128.7	1250.3
HEMLOCK 32 STATE #702H	M-32-T23S-R33E	30-025-44344	WC-025 G-09 S243310P; Upper Wolfcamp [98135]	424.64	47.5	985.5	1254.1
YARROW 32 STATE #701H	P-32-T23S-R33E	30-025-45269	WC-025 G-09 S243310P; Upper Wolfcamp [98135]	497.86	47	1129.84	1268.3
YARROW 32 STATE #702H	P-32-T23S-R33E	30-025-45270	WC-025 G-09 S243310P; Upper Wolfcamp [98135]	624.57	47.7	1370.32	1258.3
YARROW 32 STATE #703H	O-32-T23S-R33E	30-025-45271	WC-025 G-09 S243310P; Upper Wolfcamp [98135]	1238	54.4	2849	1298
YARROW 32 STATE #704H	O-32-T23S-R33E	30-025-45272	WC-025 G-09 S243310P; Upper Wolfcamp [98135]	1334	54.3	3042	1298
HEMLOCK 32 STATE #703H	N-32-T23S-R33E	30-025-45523	WC-025 G-09 S243310P; Upper Wolfcamp [98135]	1111	54.7	2499	1298
HEMLOCK 32 STATE #704H	N-32-T23S-R33E	30-025-45516	WC-025 G-09 S243310P; Upper Wolfcamp [98135]	1229	54.8	2652	1298
YARROW 32 STATE #201H	P-32-T23S-R33E	30-025-45272	Triple X; Bone Spring [59900]	*1084	*44	*2290	*1333
YARROW 32 STATE #202H	P-32-T23S-R33E	30-025-45273	Triple X; Bone Spring [59900]	*1084	*44	*2290	*1333
YARROW 32 STATE #203H	O-32-T23S-R33E	30-025-45274	Triple X; Bone Spring [59900]	*1084	*44	*2290	*1333
YARROW 32 STATE #204H	O-32-T23S-R33E	30-025-45275	Triple X; Bone Spring [59900]	*1084	*44	*2290	*1333

\*Estimated numbers for these wells; will provide actual numbers once these wells are producing.

# Production Summary Report

API: 30-025-44343

HEMLOCK 32 STATE #701H

Printed On: Friday, October 18 2019

Year	Pool	Production					Injection				
		Month	Oil(BBLS)	Gas(MCF)	Water(BBLS)	Days P/I	Water(BBLS)	Co2(MCF)	Gas(MCF)	Other	Pressure
2019	[98135] WC-025 G-09 S243310P;UPPER WOLFCAMP	Mar	7989	19009	26514	17	0	0	0	0	0
2019	[98135] WC-025 G-09 S243310P;UPPER WOLFCAMP	Apr	15678	34180	30454	30	0	0	0	0	0
2019	[98135] WC-025 G-09 S243310P;UPPER WOLFCAMP	May	10964	18439	15244	22	0	0	0	0	0
2019	[98135] WC-025 G-09 S243310P;UPPER WOLFCAMP	Jun	10124	23667	20256	23	0	0	0	0	0
2019	[98135] WC-025 G-09 S243310P;UPPER WOLFCAMP	Jul	10704	23801	18666	31	0	0	0	0	0
2019	[98135] WC-025 G-09 S243310P;UPPER WOLFCAMP	Aug	10593	21278	14821	31	0	0	0	0	0



# Production Summary Report

API: 30-025-44344

HEMLOCK 32 STATE #702H

Printed On: Friday, October 18 2019

Year	Pool	Production					Injection				
		Month	Oil(BBLS)	Gas(MCF)	Water(BBLS)	Days P/I	Water(BBLS)	Co2(MCF)	Gas(MCF)	Other	Pressure
2019	[98135] WC-025 G-09 S243310P;UPPER WOLFCAMP	Mar	6774	16183	10891	20	0	0	0	0	0
2019	[98135] WC-025 G-09 S243310P;UPPER WOLFCAMP	Apr	12290	26685	15936	30	0	0	0	0	0
2019	[98135] WC-025 G-09 S243310P;UPPER WOLFCAMP	May	8958	15405	9841	22	0	0	0	0	0
2019	[98135] WC-025 G-09 S243310P;UPPER WOLFCAMP	Jun	13653	32452	36989	23	0	0	0	0	0
2019	[98135] WC-025 G-09 S243310P;UPPER WOLFCAMP	Jul	9738	22074	25423	31	0	0	0	0	0
2019	[98135] WC-025 G-09 S243310P;UPPER WOLFCAMP	Aug	9729	19252	17291	31	0	0	0	0	0

# Production Summary Report

API: 30-025-45523

HEMLOCK 32 STATE #703H

Printed On: Friday, October 18 2019

		Production					Injection				
Year	Pool	Month	Oil(BBLS)	Gas(MCF)	Water(BBLS)	Days P/I	Water(BBLS)	Co2(MCF)	Gas(MCF)	Other	Pressure
2019	[98135] WC-025 G-09 S243310P;UPPER WOLFCAMP	Jun	27278	57396	23344	19	0	0	0	0	0
2019	[98135] WC-025 G-09 S243310P;UPPER WOLFCAMP	Jul	56565	124641	47315	31	0	0	0	0	0
2019	[98135] WC-025 G-09 S243310P;UPPER WOLFCAMP	Aug	27944	61703	24113	31	0	0	0	0	0

# Production Summary Report

API: 30-025-45516

HEMLOCK 32 STATE #704H

Printed On: Friday, October 18 2019

		Production					Injection				
Year	Pool	Month	Oil(BBLS)	Gas(MCF)	Water(BBLS)	Days P/I	Water(BBLS)	Co2(MCF)	Gas(MCF)	Other	Pressure
2019	[98135] WC-025 G-09 S243310P;UPPER WOLFCAMP	Jun	30465	63245	28102	19		0	0	0	0
2019	[98135] WC-025 G-09 S243310P;UPPER WOLFCAMP	Jul	64228	138441	43581	31		0	0	0	0
2019	[98135] WC-025 G-09 S243310P;UPPER WOLFCAMP	Aug	28744	63671	20564	31		0	0	0	0

# Production Summary Report

API: 30-025-45269

YARROW 32 STATE #701H

Printed On: Friday, October 18 2019

		Production					Injection				
Year	Pool	Month	Oil(BBLS)	Gas(MCF)	Water(BBLS)	Days P/I	Water(BBLS)	Co2(MCF)	Gas(MCF)	Other	Pressure
2019	[98135] WC-025 G-09 S243310P;UPPER WOLFCAMP	Mar	18214	38378	19401	31		0	0	0	0
2019	[98135] WC-025 G-09 S243310P;UPPER WOLFCAMP	Apr	15404	33235	15728	30		0	0	0	0
2019	[98135] WC-025 G-09 S243310P;UPPER WOLFCAMP	May	8785	15638	8729	19		0	0	0	0
2019	[98135] WC-025 G-09 S243310P;UPPER WOLFCAMP	Jun	11803	26224	14471	27		0	0	0	0
2019	[98135] WC-025 G-09 S243310P;UPPER WOLFCAMP	Jul	8298	20281	9706	22		0	0	0	0
2019	[98135] WC-025 G-09 S243310P;UPPER WOLFCAMP	Aug	6393	13987	27348	30		0	0	0	0

# Production Summary Report

API: 30-025-45270

YARROW 32 STATE #702H

Printed On: Friday, October 18 2019

Year	Pool	Production					Injection				
		Month	Oil(BBLS)	Gas(MCF)	Water(BBLS)	Days P/I	Water(BBLS)	Co2(MCF)	Gas(MCF)	Other	Pressure
2019	[98135] WC-025 G-09 S243310P;UPPER WOLFCAMP	Mar	23531	48576	14373	31		0	0	0	0
2019	[98135] WC-025 G-09 S243310P;UPPER WOLFCAMP	Apr	18838	40235	11536	30		0	0	0	0
2019	[98135] WC-025 G-09 S243310P;UPPER WOLFCAMP	May	7719	16386	5944	17		0	0	0	0
2019	[98135] WC-025 G-09 S243310P;UPPER WOLFCAMP	Jun	11670	24974	35591	27		0	0	0	0
2019	[98135] WC-025 G-09 S243310P;UPPER WOLFCAMP	Jul	10319	22496	20698	31		0	0	0	0
2019	[98135] WC-025 G-09 S243310P;UPPER WOLFCAMP	Aug	10052	19840	15316	31		0	0	0	0



Production Summary Report

API: 30-025-45271

YARROW 32 STATE #703H

Printed On: Friday, October 18 2019

		Production					Injection				
Year	Pool	Month	Oil(BBLS)	Gas(MCF)	Water(BBLS)	Days P/I	Water(BBLS)	Co2(MCF)	Gas(MCF)	Other	Pressure
2019	[98135] WC-025 G-09 S243310P;UPPER WOLFCAMP	Jun	22413	47021	28282	18		0	0	0	0
2019	[98135] WC-025 G-09 S243310P;UPPER WOLFCAMP	Jul	55737	120963	61131	31		0	0	0	0
2019	[98135] WC-025 G-09 S243310P;UPPER WOLFCAMP	Aug	23462	52086	27422	31		0	0	0	0

# Production Summary Report

API: 30-025-45272

YARROW 32 STATE #704H

Printed On: Friday, October 18 2019

		Production					Injection				
Year	Pool	Month	Oil(BBLS)	Gas(MCF)	Water(BBLS)	Days P/I	Water(BBLS)	Co2(MCF)	Gas(MCF)	Other	Pressure
2019	[98135] WC-025 G-09 S243310P;UPPER WOLFCAMP	Jun	26567	47261	26048	18		0	0	0	0
2019	[98135] WC-025 G-09 S243310P;UPPER WOLFCAMP	Jul	61588	124214	49002	31		0	0	0	0
2019	[98135] WC-025 G-09 S243310P;UPPER WOLFCAMP	Aug	26517	59085	23106	31		0	0	0	0

District I  
1625 N. French Dr., Hobbs, NM 88240  
Phone: (575) 393-6161 Fax: (575) 393-0720  
District II  
811 S. First St., Artesia, NM 88210  
Phone: (575) 748-1283 Fax: (575) 748-9720  
District III  
1000 Rio Brazos Road, Artec, NM 87410  
Phone: (505) 334-6178 Fax: (505) 334-6170  
District IV  
1220 S. St. Francis Dr., Santa Fe, NM 87505  
Phone: (505) 476-3460 Fax: (505) 476-3462

State of New Mexico  
Energy, Minerals & Natural Resources  
Department  
OIL CONSERVATION DIVISION  
1220 South St. Francis Dr.  
Santa Fe, NM 87505

**HOBBS OCD**

FORM C-102

Revised August 1, 2011

Submit one copy to appropriate

District Office

SEP 26 2018

**RECEIVED**

AMENDED REPORT

**WELL LOCATION AND ACREAGE DEDICATION PLAT**

<sup>1</sup> API Number 30-025- <b>44343</b>	<sup>2</sup> Pool Code 98135	<sup>3</sup> Pool Name WC-025 G-09 S243310P; Upper Wolfcamp
<sup>4</sup> Property Code <b>320561</b>	<sup>5</sup> Property Name <b>HEMLOCK 32 STATE</b>	<sup>6</sup> Well Number <b>#701H</b>
<sup>7</sup> GRID No. 7377	<sup>8</sup> Operator Name <b>EOG RESOURCES, INC.</b>	<sup>9</sup> Elevation <b>3660'</b>

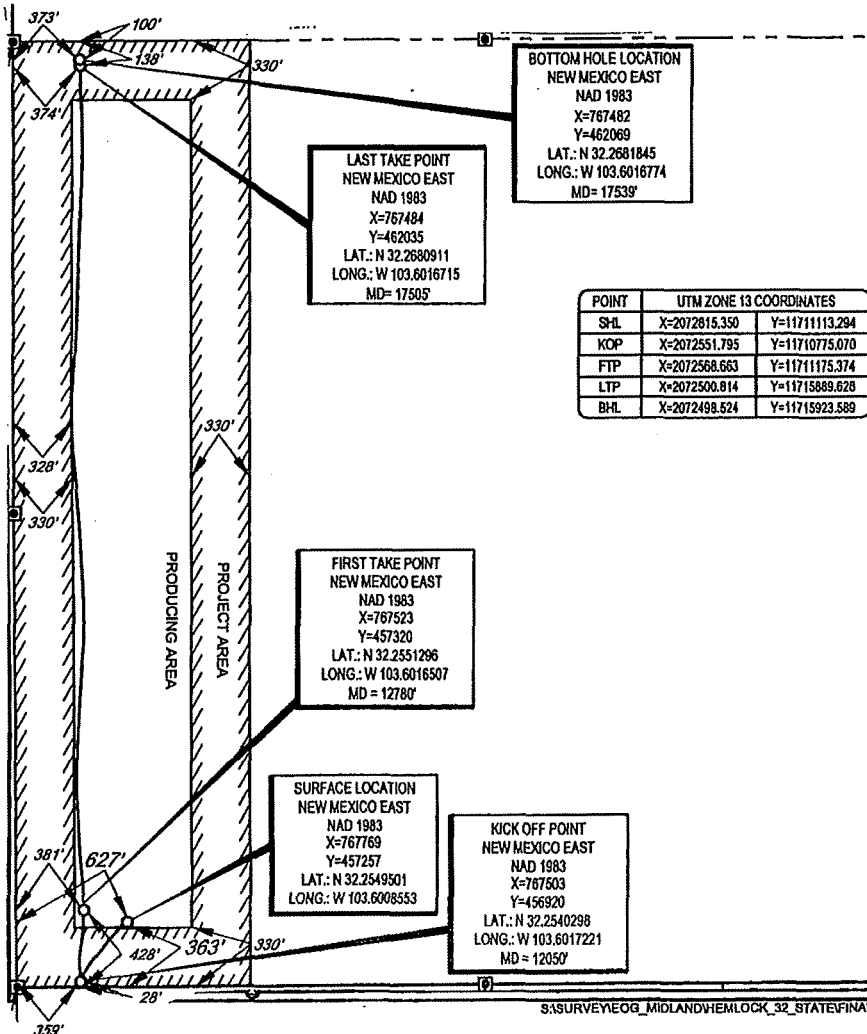
<sup>10</sup>Surface Location

UL or lot no.	Section	Township	Range	Lot Idn	Feet from the	North/South line	Feet from the	East/West line	County
<b>M</b>	<b>32</b>	<b>23-S</b>	<b>33-E</b>	<b>-</b>	<b>364'</b>	<b>SOUTH</b>	<b>627'</b>	<b>WEST</b>	<b>LEA</b>

UL or lot no.	Section	Township	Range	Lot Idn	Feet from the	North/South line	Feet from the	East/West line	County
<b>D</b>	<b>32</b>	<b>23-S</b>	<b>33-E</b>	<b>-</b>	<b>100'</b>	<b>NORTH</b>	<b>373'</b>	<b>WEST</b>	<b>LEA</b>

<sup>12</sup> Dedicated Acres <b>160.00</b>	<sup>13</sup> Joint or Infill	<sup>14</sup> Consolidation Code	<sup>15</sup> Order No.
--	-------------------------------	----------------------------------	-------------------------

No allowable will be assigned to this completion until all interests have been consolidated or a non-standard unit has been approved by the division



**17 OPERATOR CERTIFICATION**

I hereby certify that the information contained herein is true and complete to the best of my knowledge and belief, and that this organization either owns a working interest or unleased mineral interest in the land including the proposed bottom hole location or has a right to drill this well at this location pursuant to a contract with an owner of such a mineral or working interest, or to a voluntary pooling agreement or a compulsory pooling order heretofore entered by the division.

*Kay Maddox* 9/25/18  
Signature Date  
**KAY MADDOX**  
Printed Name  
E-mail Address

**18 SURVEYOR CERTIFICATION**

I hereby certify that the well location shown on this plat was plotted from field notes of actual surveys made by me or under my supervision, and that the same is true to the best of my belief.

11/13/2017  
Date of Survey  
Signature and Seal of Professional Surveyor  
**MICHAEL B. BROWN**  
NEW MEXICO  
18329  
PROFESSIONAL SURVEYOR  
Certificate Number

District I  
1625 N. French Dr., Hobbs, NM 88240  
Phone: (505) 393-6161 Fax: (505) 393-0720  
District II  
811 S. First St., Artesia, NM 88210  
Phone: (505) 748-1283 Fax: (505) 748-9720  
District III  
1000 Rio Brazos Road, Aztec, NM 87410  
Phone: (505) 334-6178 Fax: (505) 334-6170  
District IV  
1220 S. St. Francis Dr., Santa Fe, NM 87505  
Phone: (505) 476-3460 Fax: (505) 476-3462

State of New Mexico  
Energy, Minerals & Natural Resources  
Department  
OIL CONSERVATION DIVISION  
1220 South St. Francis Dr.  
Santa Fe, NM 87505

FORM C-102

Revised August 1, 2011

Submit one copy to appropriate

District Office

☐ AMENDED REPORT

**HOBBS OCD**  
**RECEIVED**  
SEP 26 2018

WELL LOCATION AND ACREAGE DEDICATION PLAT

<sup>1</sup> API Number 30-025- <b>44344</b>	<sup>2</sup> Pool Code 98135	<sup>3</sup> Pool Name WC-025 G-09 S243310P; Upper Wolfcamp
<sup>4</sup> Property Code <b>320561</b>	<sup>5</sup> Property Name <b>HEMLOCK 32 STATE</b>	<sup>6</sup> Well Number <b>#702H</b>
<sup>7</sup> GRID No. 7377	<sup>8</sup> Operator Name <b>EOG RESOURCES, INC.</b>	<sup>9</sup> Elevation <b>3660'</b>

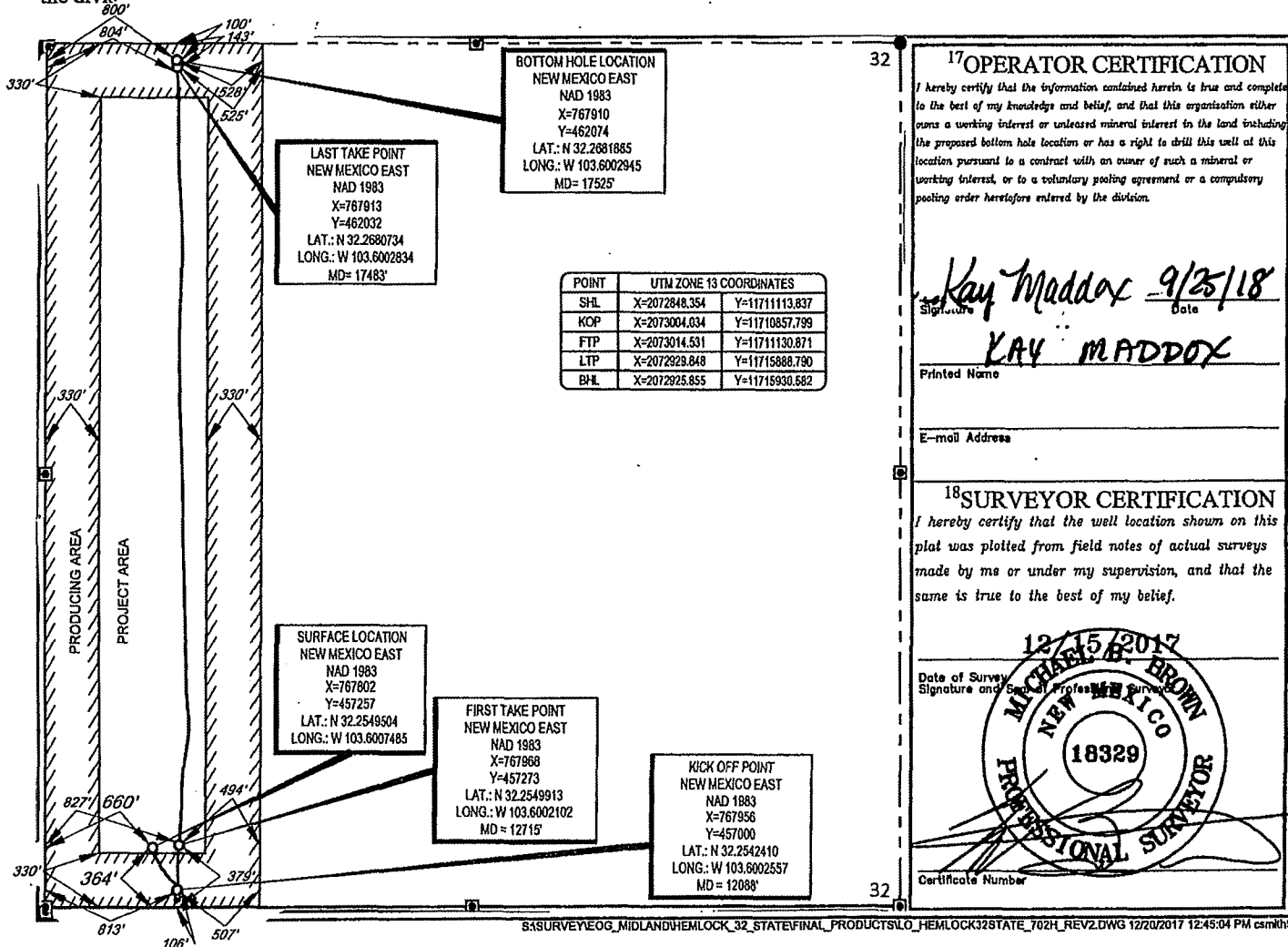
<sup>10</sup>Surface Location

UL or lot no.	Section	Township	Range	Lot Idn	Feet from the	North/South line	Feet from the	East/West line	County
<b>M</b>	<b>32</b>	<b>23-S</b>	<b>33-E</b>	<b>-</b>	<b>364'</b>	<b>SOUTH</b>	<b>660'</b>	<b>WEST</b>	<b>LEA</b>

UL or lot no.	Section	Township	Range	Lot Idn	Feet from the	North/South line	Feet from the	East/West line	County
<b>D</b>	<b>32</b>	<b>23-S</b>	<b>33-E</b>	<b>-</b>	<b>100'</b>	<b>NORTH</b>	<b>800'</b>	<b>WEST</b>	<b>LEA</b>

<sup>12</sup> Dedicated Acres <b>160.00</b>	<sup>13</sup> Joint or Infill	<sup>14</sup> Consolidation Code	<sup>15</sup> Order No.
--	-------------------------------	----------------------------------	-------------------------

No allowable will be assigned to this completion until all interests have been consolidated or a non-standard unit has been approved by the division.



District I  
1625 N. French Dr., Hobbs, NM 88240  
Phone: (505) 393-6161 Fax: (505) 393-0720  
District II  
811 S. First St., Artesia, NM 88210  
Phone: (505) 748-1283 Fax: (505) 748-9720  
District III  
1000 Rio Brazos Road, Aztec, NM 87410  
Phone: (505) 334-6178 Fax: (505) 334-6170  
District IV  
1220 S. St. Francis Dr., Santa Fe, NM 87505  
Phone: (505) 476-3460 Fax: (505) 476-3462

State of New Mexico  
Energy, Minerals & Natural Resources  
Department  
OIL CONSERVATION DIVISION  
1220 South St. Francis Dr.  
Santa Fe, NM 87505

FORM C-102  
Revised August 1, 2011  
Submit one copy to appropriate  
District Office

☐ AMENDED REPORT

WELL LOCATION AND ACREAGE DEDICATION PLAT

<sup>1</sup> API Number 30-025-45523		<sup>2</sup> Pool Code 98135		<sup>3</sup> Pool Name WC-025 G-09 S243310P; Upper Wolfcamp	
<sup>4</sup> Property Code 320561		<sup>5</sup> Property Name HEMLOCK 32 STATE			<sup>6</sup> Well Number #703H
<sup>7</sup> GRID No. 7377		<sup>8</sup> Operator Name EOG RESOURCES, INC.			<sup>9</sup> Elevation 3865'

<sup>10</sup>Surface Location

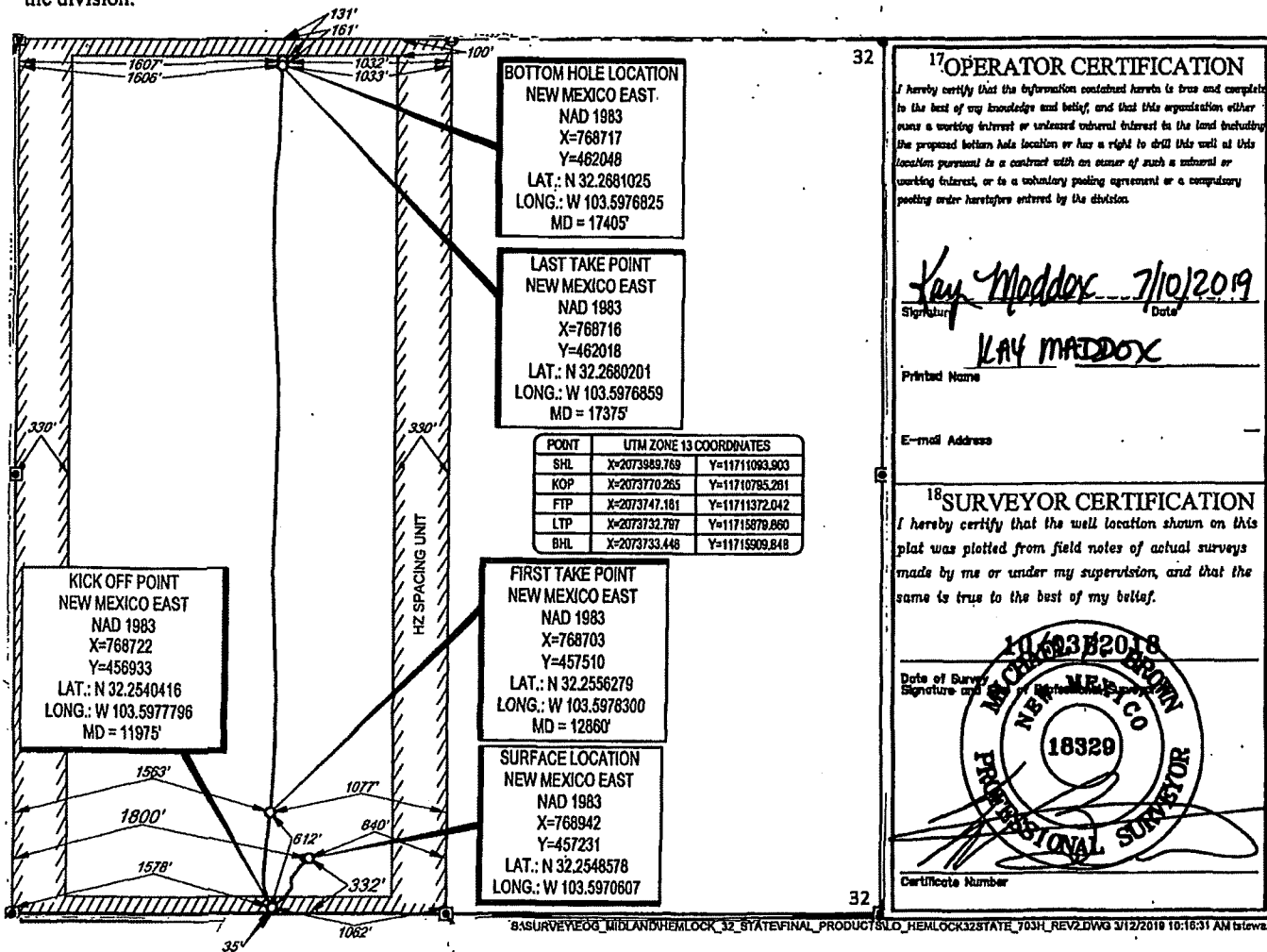
UL or lot no.	Section	Township	Range	Lot Idn	Feet from the	North/South line	Feet from the	East/West line	County
N	32	23-S	33-E	-	332'	SOUTH	1801'	WEST	LEA

<sup>11</sup>Bottom Hole Location If Different From Surface

UL or lot no.	Section	Township	Range	Lot Idn	Feet from the	North/South line	Feet from the	East/West line	County
C	32	23-S	33-E	-	131'	NORTH	1607'	WEST	LEA

<sup>12</sup> Dedicated Acres 320'	<sup>13</sup> Joint or Infill	<sup>14</sup> Consolidation Code	<sup>15</sup> Order No.
---------------------------------------	-------------------------------	----------------------------------	-------------------------

No allowable will be assigned to this completion until all interests have been consolidated or a non-standard unit has been approved by the division.





District I  
1625 N. French Dr., Hobbs, NM 88240  
Phone: (505) 393-6161 Fax: (505) 393-0720  
District II  
811 S. First St., Artesia, NM 88210  
Phone: (505) 748-1283 Fax: (505) 748-9720  
District III  
1000 Rio Brazos Road, Aztec, NM 87410  
Phone: (505) 334-6178 Fax: (505) 334-6170  
District IV  
1220 S. St. Francis Dr., Santa Fe, NM 87505  
Phone: (505) 476-3460 Fax: (505) 476-3462

State of New Mexico  
Energy, Minerals & Natural Resources  
Department  
OIL CONSERVATION DIVISION  
1220 South St. Francis Dr.  
Santa Fe, NM 87505

**HOBBS OCD**

**JUL 15 2019**

**RECEIVED**

FORM C-102

Revised August 1, 2011

Submit one copy to appropriate

District Office

☐ AMENDED REPORT

**WELL LOCATION AND ACREAGE DEDICATION PLAT**

<sup>1</sup> API Number <b>30-025-45516</b>		<sup>2</sup> Pool Code <b>98135</b>		<sup>3</sup> Pool Name <b>WC-025 G-09 S243310P; Upper Wolfcamp</b>	
<sup>4</sup> Property Code <b>320561</b>		<sup>5</sup> Property Name <b>HEMLOCK 32 STATE</b>			<sup>6</sup> Well Number <b>#704H</b>
<sup>7</sup> GRID No. <b>7377</b>		<sup>8</sup> Operator Name <b>EOG RESOURCES, INC.</b>			<sup>9</sup> Elevation <b>3685'</b>

**<sup>10</sup>Surface Location**

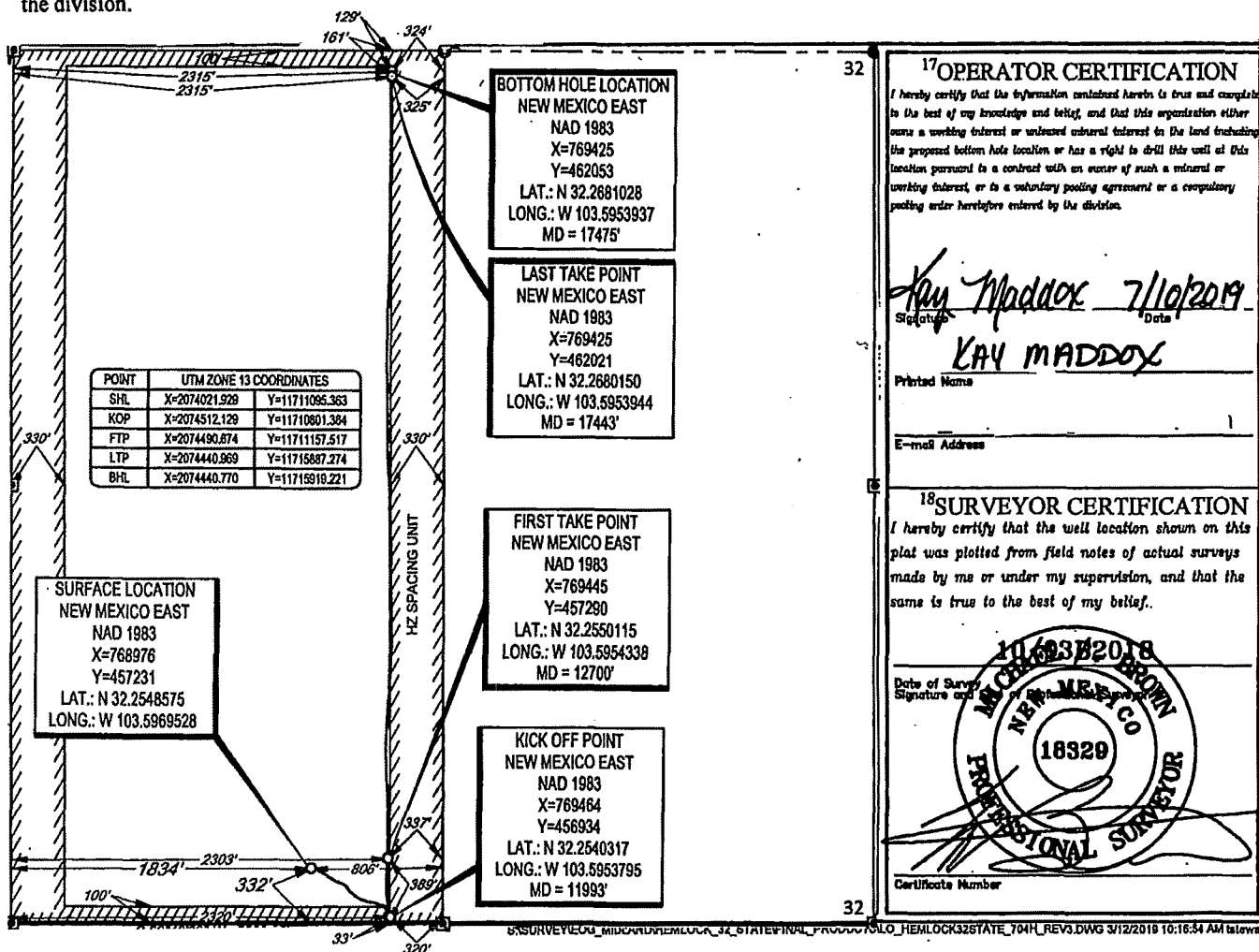
UL or lot no.	Section	Township	Range	Lot Idn	Feet from the	North/South line	Feet from the	East/West line	County
<b>N</b>	<b>32</b>	<b>23-S</b>	<b>33-E</b>	<b>-</b>	<b>332'</b>	<b>SOUTH</b>	<b>1834'</b>	<b>WEST</b>	<b>LEA</b>

**<sup>11</sup>Bottom Hole Location If Different From Surface**

UL or lot no.	Section	Township	Range	Lot Idn	Feet from the	North/South line	Feet from the	East/West line	County
<b>C</b>	<b>32</b>	<b>23-S</b>	<b>33-E</b>	<b>-</b>	<b>129'</b>	<b>NORTH</b>	<b>2315'</b>	<b>WEST</b>	<b>LEA</b>

<sup>12</sup> Dedicated Acres <b>320</b>	<sup>13</sup> Joint or Infill	<sup>14</sup> Consolidation Code	<sup>15</sup> Order No.
---	-------------------------------	----------------------------------	-------------------------

No allowable will be assigned to this completion until all interests have been consolidated or a non-standard unit has been approved by the division.



District I  
1625 N. French Dr., Hobbs, NM 88240  
Phone: (575) 393-6161 Fax: (575) 393-0720  
District II  
811 S. First St., Artesia, NM 88210  
Phone: (575) 748-1283 Fax: (575) 748-9720  
District III  
1000 Rio Brazos Road, Aztec, NM 87410  
Phone: (505) 334-6178 Fax: (505) 334-6170  
District IV  
1220 S. St. Francis Dr., Santa Fe, NM 87505  
Phone: (505) 476-3460 Fax: (505) 476-3462

State of New Mexico  
Energy, Minerals & Natural Resources  
Department  
OIL CONSERVATION DIVISION  
1220 South St. Francis Dr.  
Santa Fe, NM 87505

FORM C-102  
Revised August 1, 2011  
Submit one copy to appropriate  
District Office

☐ AMENDED REPORT

WELL LOCATION AND ACREAGE DEDICATION PLAT

<sup>1</sup> API Number 30-025- <b>45269</b>	<sup>2</sup> Pool Code 98135	<sup>3</sup> Pool Name WC-025 G-09 8243310P; Upper Wolfcamp
<sup>4</sup> Property Code <b>322743</b>	<sup>5</sup> Property Name <b>YARROW 32 STATE</b>	<sup>6</sup> Well Number <b>#701H</b>
<sup>7</sup> GRID No. 7377	<sup>8</sup> Operator Name <b>EOG RESOURCES, INC.</b>	<sup>9</sup> Elevation <b>3666'</b>

<sup>10</sup>Surface Location

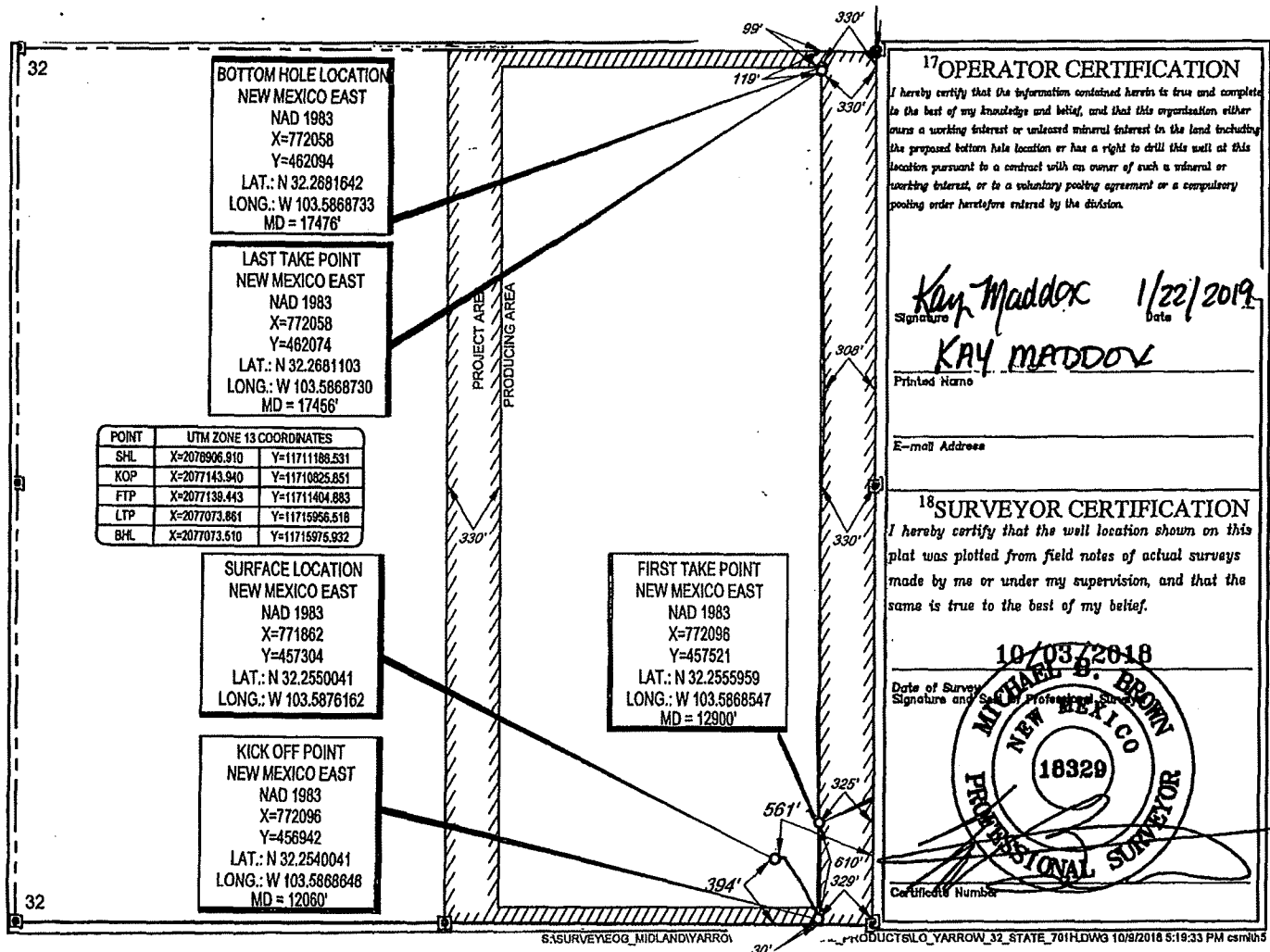
UL or lot no.	Section	Township	Range	Lot Idn	Feet from the	North/South line	Feet from the	East/West line	County
P	32	23-S	33-E	-	394'	SOUTH	561'	EAST	LEA

<sup>11</sup>Bottom Hole Location If Different From Surface

UL or lot no.	Section	Township	Range	Lot Idn	Feet from the	North/South line	Feet from the	East/West line	County
A	32	23-S	33-E	-	99'	NORTH	330'	EAST	LEA

<sup>12</sup> Dedicated Acres <b>320.00</b>	<sup>13</sup> Joint or Infill	<sup>14</sup> Consolidation Code	<sup>15</sup> Order No.
--	-------------------------------	----------------------------------	-------------------------

No allowable will be assigned to this completion until all interests have been consolidated or a non-standard unit has been approved by the division.



**FORM C-10**  
**Revised August 1, 201**  
**Submit one copy to appropriate**  
**District Office**

**AMENDED REPORT**

# WELL LOCATION AND ACREAGE DEDICATION PLAT

<sup>1</sup> API Number 30-025- 45270	<sup>2</sup> Pool Code 98135	<sup>2</sup> Pool Name WC-025 G-09 S243310P; Upper Wolfcamp
<sup>4</sup> Property Code 322743	<sup>4</sup> Property Name YARROW 32 STATE	<sup>4</sup> Well Number #702H
<sup>1</sup> GRID No. 7377	<sup>2</sup> Operator Name EOG RESOURCES, INC.	<sup>2</sup> Elevation 3667'

### **<sup>10</sup>Surface Location**

UL or lot no.	Section	Township	Range	Lot Idn	Feet from the	North/South line	Feet from the	East/West line	County
P	32	23-S	33-E	-	394'	SOUTH	594'	EAST	LEA

<sup>11</sup>Bottom Hole Location If Different From Surface

UL or lot no.	Section	Township	Range	Lot Idn	Feet from the	North/South line	Feet from the	East/West line	County
A	32	23-S	33-E	-	111'	NORTH	986'	EAST	LEA

<sup>13</sup> Dedicated Acres <b>320.00</b>	<sup>13</sup> Joint or Infill	<sup>14</sup> Consolidation Code	<sup>15</sup> Order No.
--	-------------------------------	----------------------------------	-------------------------

No allowable will be assigned to this completion until all interests have been consolidated or a non-standard unit has been approved by the division.

32
32

**BOTTOM HOLE LOCATION**  
 NEW MEXICO EAST  
 NAD 1983  
 X=771402  
 Y=462080  
 LAT.: N 32.2681383  
 LONG.: W 103.5889945  
 MD = 17470'

**LAST TAKE POINT**  
 NEW MEXICO EAST  
 NAD 1983  
 X=771403  
 Y=462035  
 LAT.: N 32.2680167  
 LONG.: W 103.5889935  
 MD = 17426'

POINT	UTM ZONE 13 COORDINATES	
SHL	X=2076873.917	Y=11711186.160
KOP	X=2076493.499	Y=11710831.813
FTP	X=2076494.797	Y=11711306.282
LTP	X=2076419.011	Y=117116913.839
BHL	X=2076418.117	Y=117116958.075

**FIRST TAKE POINT**  
 NEW MEXICO EAST  
 NAD 1983  
 X=771450  
 Y=457427  
 LAT.: N 32.2553482  
 LONG.: W 103.5889443  
 MD = 12812'

**KICK OFF POINT**  
 NEW MEXICO EAST  
 NAD 1983  
 X=771446  
 Y=456952  
 LAT.: N 32.2540440  
 LONG.: W 103.5889687  
 MD = 12091'

**SURFACE LOCATION**  
 NEW MEXICO EAST  
 NAD 1983  
 X=771829  
 Y=457304  
 LAT.: N 32.2550043  
 LONG.: W 103.5877230

**17 OPERATOR CERTIFICATION**  
 I hereby certify that the information contained herein is true and complete to the best of my knowledge and belief, and that this organization either owns a working interest or unleased mineral interest in the land including the proposed bottom hole location or has a right to drill this well at this location pursuant to a contract with an owner of such a mineral or working interest, or to a voluntary pooling agreement or a compulsory pooling order heretofore entered by the division.

Signature: Kay Maddox      Date: 1/22/19

Printed Name: KAY MADDOX

E-mail Address: \_\_\_\_\_

**18 SURVEYOR CERTIFICATION**  
 I hereby certify that the well location shown on this plat was plotted from field notes of actual surveys made by me or under my supervision, and that the same is true to the best of my belief.

10/03/2018  
 Date of Survey  
 Signature and Seal of Professional Surveyor

Certificate Number: \_\_\_\_\_

**District I**  
1625 N. French Dr., Hobbs, NM 88240  
Phone: (575) 393-6161 Fax: (575) 393-0720  
**District II**  
811 S. First St., Artesia, NM 88210  
Phone: (575) 748-1283 Fax: (575) 748-9720  
**District III**  
1000 Rio Brazos Road, Aztec, NM 87410  
Phone: (505) 334-6178 Fax: (505) 334-6170  
**District IV**  
1220 S. St. Francis Dr., Santa Fe, NM 87505  
Phone: (505) 476-3460 Fax: (505) 476-3462

State of New Mexico **HOBBS OCD**  
Energy, Minerals & Natural Resources  
Department  
OIL CONSERVATION DIVISION  
1220 South St. Francis Dr.  
Santa Fe, NM 87505

FORM C-102  
Revised August 1, 2011  
Submit one copy to appropriate  
District Office  
☐ AMENDED REPORT

**JUL 15 2019**  
**RECEIVED**

**WELL LOCATION AND ACREAGE DEDICATION PLAT**

<sup>1</sup> API Number 30-025-45271		<sup>2</sup> Pool Code 98135		<sup>3</sup> Pool Name WC-025 G-09 S243310P; Upper Wolfcamp	
<sup>4</sup> Property Code 322743		<sup>5</sup> Property Name YARROW 32 STATE			<sup>6</sup> Well Number #703H
<sup>7</sup> GRID No. 7377		<sup>8</sup> Operator Name EOG RESOURCES, INC.			<sup>9</sup> Elevation 3672'

<sup>10</sup>Surface Location

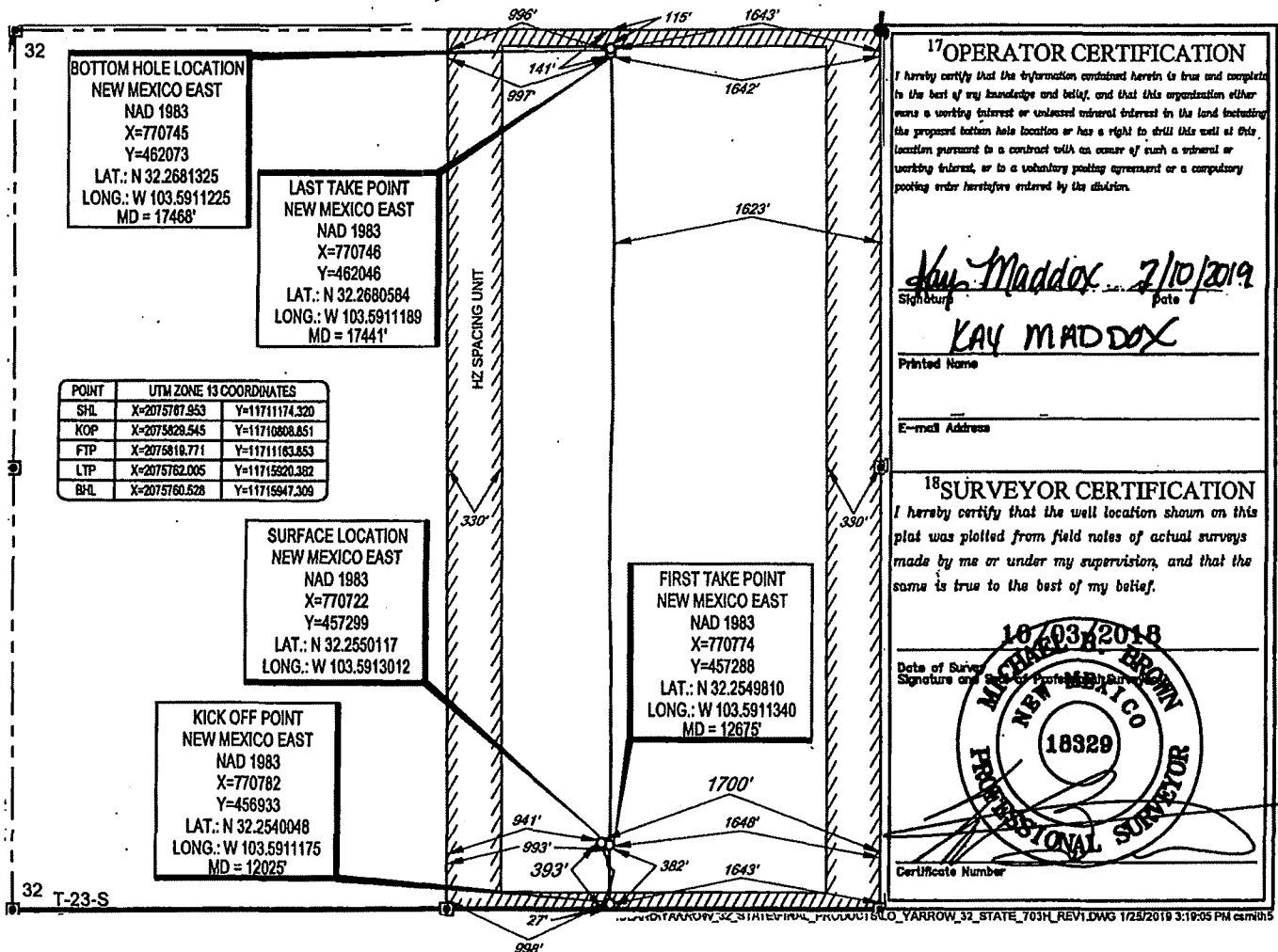
UL or lot no.	Section	Township	Range	Lot Idn	Feet from the	North/South line	Feet from the	East/West line	County
0	32	23-S	33-E	-	393'	SOUTH	1700'	EAST	LEA

<sup>11</sup>Bottom Hole Location If Different From Surface

UL or lot no.	Section	Township	Range	Lot Idn	Feet from the	North/South line	Feet from the	East/West line	County
B	32	23-S	33-E	-	115'	NORTH	1643'	EAST	LEA

<sup>12</sup> Dedicated Acres 320	<sup>13</sup> Joint or Infill	<sup>14</sup> Consolidation Code	<sup>15</sup> Order No.
--------------------------------------	-------------------------------	----------------------------------	-------------------------

No allowable will be assigned to this completion until all interests have been consolidated or a non-standard unit has been approved by the division.



District I  
1625 N. French Dr., Hobbs, NM 88240  
Phone: (575) 393-6161 Fax: (575) 393-0720  
District II  
811 S. First St., Artesia, NM 88210  
Phone: (575) 748-1283 Fax: (575) 748-9720  
District III  
1000 Rio Brazos Road, Aztec, NM 87410  
Phone: (505) 334-6178 Fax: (505) 334-6170  
District IV  
1220 S. St. Francis Dr., Santa Fe, NM 87505  
Phone: (505) 476-3460 Fax: (505) 476-3462

State of New Mexico  
Energy, Minerals & Natural Resources  
Department  
OIL CONSERVATION DIVISION  
1220 South St. Francis Dr.  
Santa Fe, NM 87505

FORM C-102  
Revised August 1, 2011  
Submit one copy to appropriate  
District Office

☐ AMENDED REPORT

**HOBBS OCD**  
**RECEIVED**  
**JUL 15 2019**

WELL LOCATION AND ACREAGE DEDICATION PLAT

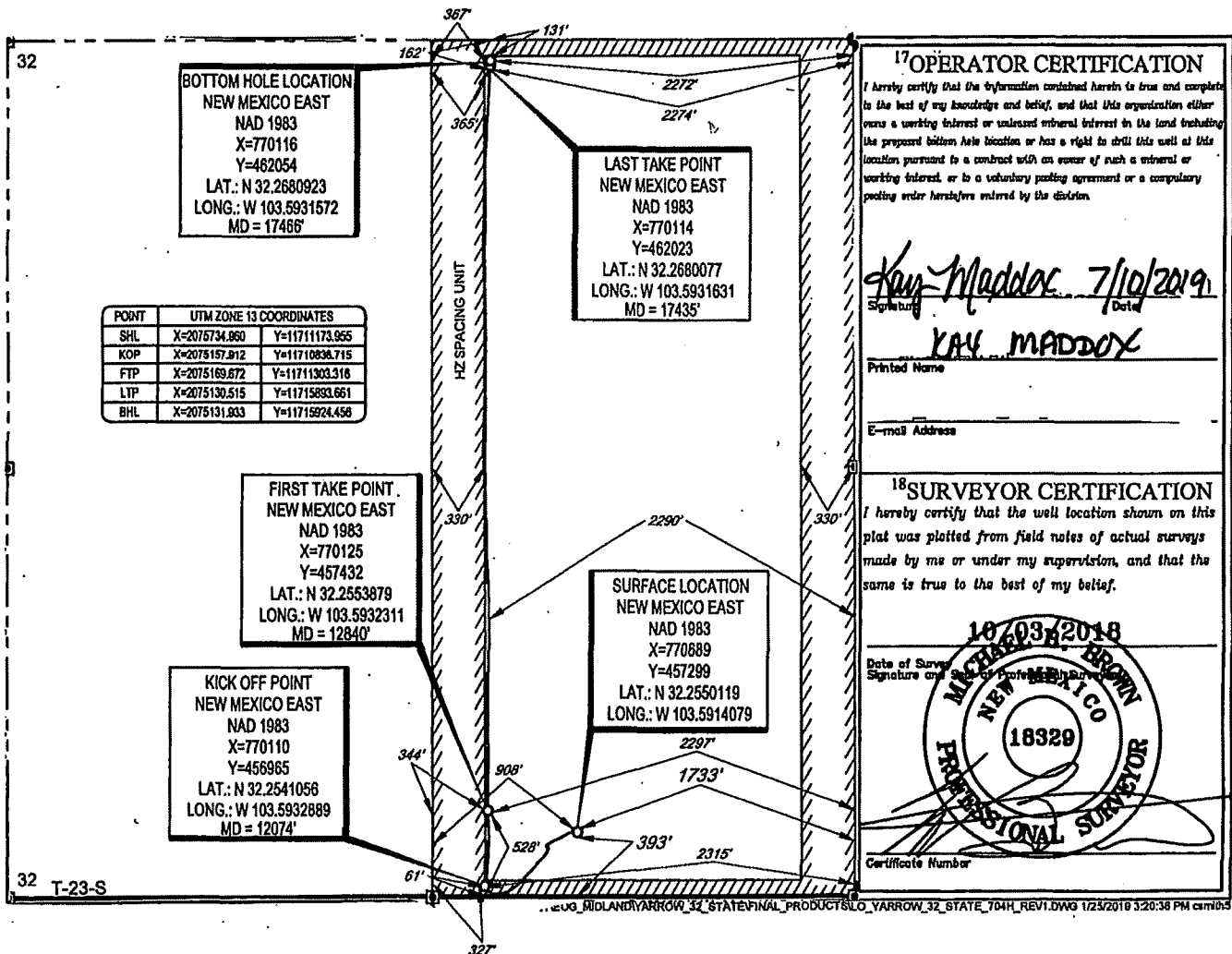
API Number 30-025-45272		Pool Code 98135	Pool Name WC025 G-09 S243310P: Upper Wolfcamp
Property Code 322743	Property Name YARROW 32 STATE		Well Number #704H
GRID No. 7377	Operator Name EOG RESOURCES, INC.		Elevation 3672'

UL or lot no.	Section	Township	Range	Lot Idn	Feet from the	North/South line	Feet from the	East/West line	County
0	32	23-S	33-E	-	393'	SOUTH	1733'	EAST	LEA

UL or lot no.	Section	Township	Range	Lot Idn	Feet from the	North/South line	Feet from the	East/West line	County
B	32	23-S	33-E	-	131'	NORTH	2272'	EAST	LEA

Dedicated Acres 320	Joint or Infill	Consolidation Code	Order No.
------------------------	-----------------	--------------------	-----------

No allowable will be assigned to this completion until all interests have been consolidated or a non-standard unit has been approved by the division.



**17 OPERATOR CERTIFICATION**  
I hereby certify that the information contained herein is true and complete to the best of my knowledge and belief, and that this organization either owns a working interest or undivided mineral interest in the land including the proposed bottom hole location or has a right to drill this well at this location pursuant to a contract with an owner of such a mineral or working interest, or to a voluntary pooling agreement or a compulsory pooling order heretofore entered by the division.

Signature: *Kay Maddox* Date: *7/10/2019*  
Printed Name: *KAY MADDOX*  
E-mail Address: \_\_\_\_\_

**18 SURVEYOR CERTIFICATION**  
I hereby certify that the well location shown on this plat was plotted from field notes of actual surveys made by me or under my supervision, and that the same is true to the best of my belief.

Date of Survey: *10/03/2018*  
Signature: \_\_\_\_\_  
Professional Surveyor Seal: *18329*  
Certificate Number: \_\_\_\_\_



District I  
1625 N. French Dr., Hobbs, NM 88240  
Phone: (575) 393-6161 Fax: (575) 393-0720  
District II  
811 S. First St., Artesia, NM 88210  
Phone: (575) 748-1283 Fax: (575) 748-9720  
District III  
1000 Rio Brazos Road, Aztec, NM 87410  
Phone: (505) 334-6178 Fax: (505) 334-6170  
District IV  
1220 S. St. Francis Dr., Santa Fe, NM 87505  
Phone: (505) 476-3460 Fax: (505) 476-3462

State of New Mexico  
Energy, Minerals & Natural Resources  
Department  
CONSERVATION DIVISION  
1220 South St. Francis Dr.  
Santa Fe, NM 87505

FORM C-102

Revised August 1, 2011

Submit one copy to appropriate

District Office

☐ AMENDED REPORT

**OCD - HOBBS**  
**07/31/2019**  
**RECEIVED**

WELL LOCATION AND ACREAGE DEDICATION PLAT

<sup>1</sup> API Number 30-025- <b>46272</b>	<sup>2</sup> Pool Code 59900	<sup>3</sup> Pool Name Triple X; Bone Spring
<sup>4</sup> Property Code 322743	<sup>5</sup> Property Name YARROW 32 STATE	<sup>6</sup> Well Number #201H
<sup>7</sup> GRID No. 7377	<sup>8</sup> Operator Name EOG RESOURCES, INC.	<sup>9</sup> Elevation 3667'

<sup>10</sup>Surface Location

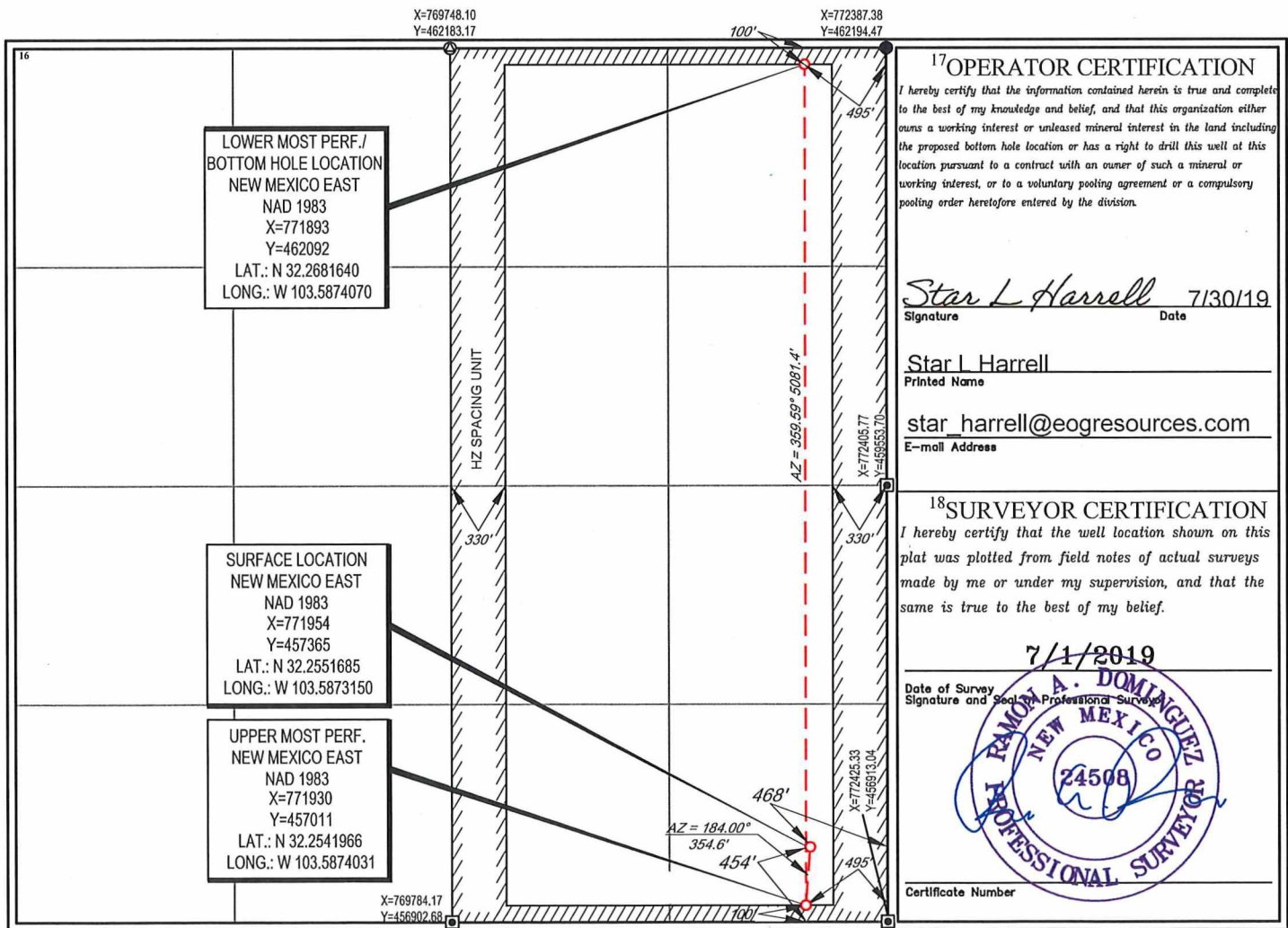
UL or lot no. <b>P</b>	Section <b>32</b>	Township <b>23-S</b>	Range <b>33-E</b>	Lot Idn —	Feet from the <b>454'</b>	North/South line <b>SOUTH</b>	Feet from the <b>468'</b>	East/West line <b>EAST</b>	County <b>LEA</b>
---------------------------	----------------------	-------------------------	----------------------	--------------	------------------------------	----------------------------------	------------------------------	-------------------------------	----------------------

<sup>11</sup>Bottom Hole Location If Different From Surface

UL or lot no. <b>A</b>	Section <b>32</b>	Township <b>23-S</b>	Range <b>33-E</b>	Lot Idn —	Feet from the <b>100'</b>	North/South line <b>NORTH</b>	Feet from the <b>495'</b>	East/West line <b>EAST</b>	County <b>LEA</b>
---------------------------	----------------------	-------------------------	----------------------	--------------	------------------------------	----------------------------------	------------------------------	-------------------------------	----------------------

<sup>12</sup> Dedicated Acres <b>320</b>	<sup>13</sup> Joint or Infill	<sup>14</sup> Consolidation Code	<sup>15</sup> Order No.
---	-------------------------------	----------------------------------	-------------------------

No allowable will be assigned to this completion until all interests have been consolidated or a non-standard unit has been approved by the division.



<sup>17</sup>OPERATOR CERTIFICATION

I hereby certify that the information contained herein is true and complete to the best of my knowledge and belief, and that this organization either owns a working interest or unleased mineral interest in the land including the proposed bottom hole location or has a right to drill this well at this location pursuant to a contract with an owner of such a mineral or working interest, or to a voluntary pooling agreement or a compulsory pooling order heretofore entered by the division.

Star L Harrell 7/30/19  
Signature Date

Star L Harrell  
Printed Name

star\_harrell@eogresources.com  
E-mail Address

<sup>18</sup>SURVEYOR CERTIFICATION

I hereby certify that the well location shown on this plat was plotted from field notes of actual surveys made by me or under my supervision, and that the same is true to the best of my belief.

7/1/2019  
Date of Survey

Signature and Seal of Professional Surveyor

RAMON A. DOMINGUEZ  
NEW MEXICO  
24508  
PROFESSIONAL SURVEYOR

Certificate Number

District I  
1625 N. French Dr., Hobbs, NM 88240  
Phone: (505) 393-6161 Fax: (505) 393-0720  
District II  
811 S. First St., Artesia, NM 88210  
Phone: (505) 748-1283 Fax: (505) 748-9720  
District III  
1000 Rio Brazos Road, Aztec, NM 87410  
Phone: (505) 334-6178 Fax: (505) 334-6170  
District IV  
1220 S. St. Francis Dr., Santa Fe, NM 87505  
Phone: (505) 476-3460 Fax: (505) 476-3462

State of New Mexico  
Energy, Minerals & Natural Resources  
Department  
OIL CONSERVATION DIVISION  
1220 South St. Francis Dr.  
Santa Fe, NM 87505

FORM C-102

Revised August 1, 2011

Submit one copy to appropriate

District Office

OCB - HOBBS  
07/31/2019  
RECEIVED

☐ AMENDED REPORT

WELL LOCATION AND ACREAGE DEDICATION PLAT

<sup>1</sup> API Number 30-025- <b>46273</b>	<sup>2</sup> Pool Code 59900	<sup>3</sup> Pool Name Triple X; Bone Spring
<sup>4</sup> Property Code 322743	<sup>5</sup> Property Name YARROW 32 STATE	<sup>6</sup> Well Number #202H
<sup>7</sup> GRID No. 7377	<sup>8</sup> Operator Name EOG RESOURCES, INC.	<sup>9</sup> Elevation 3667'

<sup>10</sup>Surface Location

UL or lot no. P	Section 32	Township 23-S	Range 33-E	Lot Idn -	Feet from the 454'	North/South line SOUTH	Feet from the 501'	East/West line EAST	County LEA
--------------------	---------------	------------------	---------------	--------------	-----------------------	---------------------------	-----------------------	------------------------	---------------

<sup>11</sup>Bottom Hole Location If Different From Surface

UL or lot no. A	Section 32	Township 23-S	Range 33-E	Lot Idn -	Feet from the 100'	North/South line NORTH	Feet from the 1115'	East/West line EAST	County LEA
--------------------	---------------	------------------	---------------	--------------	-----------------------	---------------------------	------------------------	------------------------	---------------

<sup>12</sup> Dedicated Acres 320	<sup>13</sup> Joint or Infill	<sup>14</sup> Consolidation Code	<sup>15</sup> Order No.
--------------------------------------	-------------------------------	----------------------------------	-------------------------

No allowable will be assigned to this completion until all interests have been consolidated or a non-standard unit has been approved by the division.

