

RECEIVED: 11/18/19	REVIEWER:	TYPE: CTB	APP NO: pDM1933733331
--------------------	-----------	-----------	-----------------------

ABOVE THIS TABLE FOR OCD DIVISION USE ONLY



NEW MEXICO OIL CONSERVATION DIVISION
- Geological & Engineering Bureau –
1220 South St. Francis Drive, Santa Fe, NM 87505

ADMINISTRATIVE APPLICATION CHECKLIST

THIS CHECKLIST IS MANDATORY FOR ALL ADMINISTRATIVE APPLICATIONS FOR EXCEPTIONS TO DIVISION RULES AND REGULATIONS WHICH REQUIRE PROCESSING AT THE DIVISION LEVEL IN SANTA FE

Applicant: Centennial Resource Production, LLC OGRID Number: 372165
Well Name: Duck Hunt I State Com 601H, 501H, 301H, 602H, 502H, 302H, 401H API: 30-025-45566, 30-025-45265, 30-025-45562
Pool: Antelope Ridge; Bone Spring Pool Code: 2205
30-025-46347, 30-025-46346, 30-025-46344, 30-025-46345

SUBMIT ACCURATE AND COMPLETE INFORMATION REQUIRED TO PROCESS THE TYPE OF APPLICATION INDICATED BELOW

1) TYPE OF APPLICATION: Check those which apply for [A]

- A. Location – Spacing Unit – Simultaneous Dedication
☐ NSL ☐ NSP (PROJECT AREA) ☐ NSP (PRORATION UNIT) ☐ SD
- B. Check one only for [I] or [II]
[I] Commingling – Storage – Measurement
☐ DHC ☒ CTB ☐ PLC ☐ PC ☐ OLS ☐ OLM
[II] Injection – Disposal – Pressure Increase – Enhanced Oil Recovery
☐ WFX ☐ PMX ☐ SWD ☐ IPI ☐ EOR ☐ PPR

FOR OCD ONLY	
<input type="checkbox"/>	Notice Complete
<input type="checkbox"/>	Application Content Complete

2) NOTIFICATION REQUIRED TO: Check those which apply.

- A. ☐ Offset operators or lease holders
B. ☒ Royalty, overriding royalty owners, revenue owners
C. ☒ Application requires published notice
D. ☒ Notification and/or concurrent approval by SLO
E. ☐ Notification and/or concurrent approval by BLM
F. ☐ Surface owner
G. ☐ For all of the above, proof of notification or publication is attached, and/or,
H. ☐ No notice required

3) CERTIFICATION: I hereby certify that the information submitted with this application for administrative approval is **accurate** and **complete** to the best of my knowledge. I also understand that **no action** will be taken on this application until the required information and notifications are submitted to the Division.

Note: Statement must be completed by an Individual with managerial and/or supervisory capacity.

Kanicia Schlichting	11/18/19
Print or Type Name	Date
	720-499-1537
	Phone Number
	kanicia.schlichting@ccdevinc.com
Signature	e-mail Address

District I
1625 N. French Drive, Hobbs, NM 88240

District II
811 S. First St., Artesia, NM 88210

District III
1000 Rio Brazos Road, Aztec, NM 87410

District IV
1220 S. St Francis Dr, Santa Fe, NM 87505

State of New Mexico
Energy, Minerals and Natural Resources Department

OIL CONSERVATION DIVISION

1220 S. St Francis Drive
Santa Fe, New Mexico 87505

Form C-107-B
Revised August 1, 2011

Submit the original application to the Santa Fe office with one copy to the appropriate District Office.

APPLICATION FOR SURFACE COMMINGLING (DIVERSE OWNERSHIP)

OPERATOR NAME: Centennial Resource Production, LLC
OPERATOR ADDRESS: 1001 17th Street, Suite 1800, Denver, CO 80202
APPLICATION TYPE:

☐ Pool Commingling ☒ Lease Commingling ☐ Pool and Lease Commingling ☐ Off-Lease Storage and Measurement (Only if not Surface Commingled)
LEASE TYPE: ☐ Fee ☒ State ☐ Federal

Is this an Amendment to existing Order? ☐ Yes ☒ No If "Yes", please include the appropriate Order No. _____
Have the Bureau of Land Management (BLM) and State Land office (SLO) been notified in writing of the proposed commingling
☒ Yes ☐ No

(A) POOL COMMINGLING Please attach sheets with the following information				
(1) Pool Names and Codes	Gravities / BTU of Non-Commingled Production	Calculated Gravities / BTU of Commingled Production	Calculated Value of Commingled Production	Volumes
(2) Are any wells producing at top allowables? <input type="checkbox"/> Yes <input type="checkbox"/> No				
(3) Has all interest owners been notified by certified mail of the proposed commingling? <input type="checkbox"/> Yes <input type="checkbox"/> No				
(4) Measurement type: <input type="checkbox"/> Metering <input type="checkbox"/> Other (Specify)				
(5) Will commingling decrease the value of production? <input type="checkbox"/> Yes <input type="checkbox"/> No If "yes", describe why commingling should be approved				


(B) LEASE COMMINGLING Please attach sheets with the following information	
(1) Pool Name and Code. Antelope Ridge; Bone Spring 2205	
(2) Is all production from same source of supply? <input checked="" type="checkbox"/> Yes <input type="checkbox"/> No	
(3) Has all interest owners been notified by certified mail of the proposed commingling? <input checked="" type="checkbox"/> Yes <input type="checkbox"/> No	
(4) Measurement type: <input checked="" type="checkbox"/> Metering <input type="checkbox"/> Other (Specify)	

(C) POOL and LEASE COMMINGLING Please attach sheets with the following information	
(1) Complete Sections A and E.	

(D) OFF-LEASE STORAGE and MEASUREMENT Please attach sheets with the following information	
(1) Is all production from same source of supply? <input type="checkbox"/> Yes <input type="checkbox"/> No	
(2) Include proof of notice to all interest owners.	

(E) ADDITIONAL INFORMATION (for all application types) Please attach sheets with the following information	
(1) A schematic diagram of facility, including legal location.	
(2) A plat with lease boundaries showing all well and facility locations. Include lease numbers if Federal or State lands are involved.	
(3) Lease Names, Lease and Well Numbers, and API Numbers.	

I hereby certify that the information above is true and complete to the best of my knowledge and belief.

SIGNATURE:  TITLE: Sr. Regulatory Analyst DATE: 11/18/19
TYPE OR PRINT NAME Kanicia Schlichting TELEPHONE NO.: 720-499-1537
E-MAIL ADDRESS: kanicia.schlichting@cdevinc.com

APPLICATION FOR SURFACE POOL/LEASE COMMINGLING & OFF LEASE MEASUREMENT

Centennial Resource Production, LLC ("CRP") respectfully requests approval to surface pool/lease commingling oil & gas from the following wells:

	API	WELL NAME	WELL #	LOCATION	POOL CODE/NAME	STATUS	OIL API/BOPD	GAS BTU/MCFPD
1	30-025-45566	DUCK HUNT 1 STATE COM	#601H	I-1-23S-34E	[2205] ANTELOPE RIDGE; BONE SPRING	PRODUCING	737	323
2	30-025-45265	DUCK HUNT 1 STATE COM	#501H	I-1-23S-34E	[2205] ANTELOPE RIDGE; BONE SPRING	PRODUCING	708	1259
3	30-025-45562	DUCK HUNT 1 STATE COM	#301H	I-1-23S-34E	[2205] ANTELOPE RIDGE; BONE SPRING	PRODUCING	579	1106
4	30-025-46347	DUCK HUNT 1 STATE COM	#602H	J-1-23S-34E	[2205] ANTELOPE RIDGE; BONE SPRING	DRILLING		
5	30-025-46346	DUCK HUNT 1 STATE COM	#502H	J-1-23S-34E	[2205] ANTELOPE RIDGE; BONE SPRING	DRILLING		
6	30-025-46344	DUCK HUNT 1 STATE COM	#302H	J-1-23S-34E	[2205] ANTELOPE RIDGE; BONE SPRING	DRILLING		
7	30-025-46345	DUCK HUNT 1 STATE COM	#401H	J-1-23S-34E	[2205] ANTELOPE RIDGE; BONE SPRING	DRILLING		

State Lease Number: E0-1932-1

* current values are estimated. CRP will provide actual Gravities, Oil BOPD, BTU, and MCFPD upon completion of the wells.

GENERAL INFORMATION:

- State Lease E0-1932-1 covers 160 acres, SE/4 Section 1, T23S-R34E, Lea County, New Mexico and has a base lease royalty of 12.5%.
- The E/2 E/2 of Section 12, T23S R34E, Lea County, New Mexico is owned by multiple fee owners.
- The W/2 E/2 of Section 12, T23S R34E, Lea County, New Mexico is owned by multiple fee owners.
- E/2 SE/4 section 1-23S-34E from E0-1932 and the E/2 E/2 section 12-23S-34E have been communitized for the Bone Spring formation. A State form of communitization has been approved by the New Mexico State Land Office.
- W/2 SE/4 section 1-23S-34E from E0-1932 and the W/2 E/2 section 12-23S-34E have been communitized for the Bone Spring formation. A State form of communitization has been submitted to the New Mexico State Land Office for approval.
- The central tank battery to service the subject wells is located on I-1-23S-34E of E0-1932. Approval for the off-lease location has been received from the offset operator.
- Centennial Resource Production, LLC, ConocoPhillips Company, MRC Permian Company, Veritas Energy, LLC, Energen Resource Corporation, Marathon Oil Permian, LLC, and Roy G. Barton, Jr. are the working interest owners in the Duck Hunt 1 State Com 601H, Duck Hunt 1 State Com #501H, Duck Hunt 1 State Com #301H, and Duck Hunt 1 State Com #401H and the owners of the royalty are the State of New Mexico and various fee owners.

Duck Hunt 1 State Com 301H oil allocation meter is an Endress & Hauser Coriolis meter (S/N P2041316000)

Duck Hunt 1 State Com 301H water allocation meter is an Endress & Hauser Magnetic meter (S/N P209D41600)

Duck Hunt 1 State Com 501H

All gross production from the Duck Hunt 1 State Com 501H flows from the wellhead to a dedicated three-phase separator. The three-phase separator is equipped with oil, gas, and water production meters. After separation and metering, produced fluids are commingled with production from the Duck Hunt 1 State Com 301H/ 601H/ 602H/ 502H/ 401H/302H . The fluids from these seven wells are stored at and sold from the Duck Hunt 1 State Com CTB.

Oil

Oil production is measured at the outlet of SEP2 using Coriolis meter OM2. The oil is then commingled in a header and sent to HT1 & HT2, which is a Heater Treater. Oil from HT1 & HT2 flows to Tank T1 for storage. Oil is sold from T1 through (2) LACT Unit(s).

Gas

Produced gas is measured at the outlet of SEP2 using an orifice plate meter GM2. Gas is then commingled in a header and routed to a gas sales pipeline. If the pressure of the gas sales pipeline exceeds 125 psi, the gas header lets down to the flare FL1. Flared gas is metered through an orifice plate meter GM8.

Flash gas from HT1 is sent to gas sales pipeline. An upset with gas sales pipeline will cause the flash gas to be let down to flare FL1.

Tank T1 vent gas emissions are routed to VRU1 and then are metered through an orifice plate meter GM4. An upset with VRU1 will cause vent gas to be let down to a low-pressure flare FL2.

Water

Water production is measured at the outlet of SEP2 using a mag meter WM2. Water is then commingled in a header and stored in tank T2. A transfer pump P1 sends water to an SWD after being metered by a turbine meter WM8.

Duck Hunt 1 State Com 501H gas allocation meter is a Canalta SR. 14.3 orifice meter (S/N D0304552)

Duck Hunt 1 State Com 501H oil allocation meter is an Endress & Hauser Coriolis meter (S/N P2076316000)

Duck Hunt 1 State Com 501H water allocation meter is an Endress & Hauser Magnetic meter (S/N P209CD16000)

Oil

Oil production is measured at the outlet of SEP4 using Coriolis meter OM4. The oil is then commingled in a header and sent to HT1 & HT2, which is a Heater Treater. Oil from HT1 & HT2 flows to Tank T1 for storage. Oil is sold from T1 through (2) LACT Unit(s).

Gas

Produced gas is measured at the outlet of SEP4 using an orifice plate meter GM4. Gas is then commingled in a header and routed to a gas sales pipeline. If the pressure of the gas sales pipeline exceeds 125 psi, the gas header lets down to the flare FL1. Flared gas is metered through an orifice plate meter GM8.

Flash gas from HT1 is sent to gas sales pipeline. An upset with gas sales pipeline will cause the flash gas to be let down to flare FL1.

Tank T1 vent gas emissions are routed to VRU1 and then are metered through an orifice plate meter GM4. An upset with VRU1 will cause vent gas to be let down to a low-pressure flare FL2.

Water

Water production is measured at the outlet of SEP4 using a mag meter WM4. Water is then commingled in a header and stored in tank T2. A transfer pump P1 sends water to an SWD after being metered by a turbine meter WM8.

Duck Hunt 1 State Com 401H gas allocation meter is a Canalta SR. 14.3 orifice meter (S/N D0305859)

Duck Hunt 1 State Com 401H oil allocation meter is an Endress & Hauser Coriolis meter (S/N P9065916000)

Duck Hunt 1 State Com 401H water allocation meter is an Endress & Hauser Magnetic meter (S/N P9078216000)

Duck Hunt 1 State Com 302H

All gross production from the Duck Hunt 1 State Com 302H flows from the wellhead to a dedicated three-phase separator. The three-phase separator is equipped with oil, gas, and water production meters. After separation and metering, produced fluids are commingled with production from the Duck Hunt 1 State Com 301H/ 501H/ 602H/ 502H/ 601H/401H . The fluids from these seven wells are stored at and sold from the Duck Hunt 1 State Com CTB.

Oil

Oil production is measured at the outlet of SEP5 using Coriolis meter OM5. The oil is then commingled in a header and sent to HT1 & HT2, which is a Heater Treater. Oil from HT1 & HT2 flows to Tank T1 for storage. Oil is sold from T1 through (2) LACT Unit(s).

Gas

Tank T1 vent gas emissions are routed to VRU1 and then are metered through an orifice plate meter GM4. An upset with VRU1 will cause vent gas to be let down to a low-pressure flare FL2.

Water

Water production is measured at the outlet of SEP6 using a mag meter WM6. Water is then commingled in a header and stored in tank T2. A transfer pump P1 sends water to an SWD after being metered by a turbine meter WM8.

Duck Hunt 1 State Com 602H gas allocation meter is a Canalta SR. 14.3 orifice meter (S/N D0305931)

Duck Hunt 1 State Com 602H oil allocation meter is an Endress & Hauser Coriolis meter (S/N P905C216000)

Duck Hunt 1 State Com 602H water allocation meter is an Endress & Hauser Magnetic meter (S/N PA0A7416000)

Duck Hunt 1 State Com 502H

All gross production from the Duck Hunt 1 State Com 502H flows from the wellhead to a dedicated three-phase separator. The three-phase separator is equipped with oil, gas, and water production meters. After separation and metering, produced fluids are commingled with production from the Duck Hunt 1 State Com 301H/ 501H/ 302H/ 602H/ 601H/401H . The fluids from these seven wells are stored at and sold from the Duck Hunt 1 State Com CTB.

Oil

Oil production is measured at the outlet of SEP7 using Coriolis meter OM7. The oil is then commingled in a header and sent to HT1 & HT2, which is a Heater Treater. Oil from HT1 & HT2 flows to Tank T1 for storage. Oil is sold from T1 through (2) LACT Unit(s).

Gas

Produced gas is measured at the outlet of SEP7 using an orifice plate meter GM7. Gas is then commingled in a header and routed to a gas sales pipeline. If the pressure of the gas sales pipeline exceeds 125 psi, the gas header lets down to the flare FL1. Flared gas is metered through an orifice plate meter GM8.

Flash gas from HT1 is sent to gas sales pipeline. An upset with gas sales pipeline will cause the flash gas to be let down to flare FL1.

Tank T1 vent gas emissions are routed to VRU1 and then are metered through an orifice plate meter GM4. An upset with VRU1 will cause vent gas to be let down to a low-pressure flare FL2.

Water

Water production is measured at the outlet of SEP7 using a mag meter WM7. Water is then commingled in a header and stored in tank T2. A transfer pump P1 sends water to an SWD after being metered by a turbine meter WM8.

Duck Hunt 1 State Com 601H
Duck Hunt 1 State Com 501H

Duck Hunt 1 State Com 602H
Duck Hunt 1 State Com 502H

Duck Hunt 1 State Com 401H

Duck Hunt CTB

EO-1932

Fee

Fee

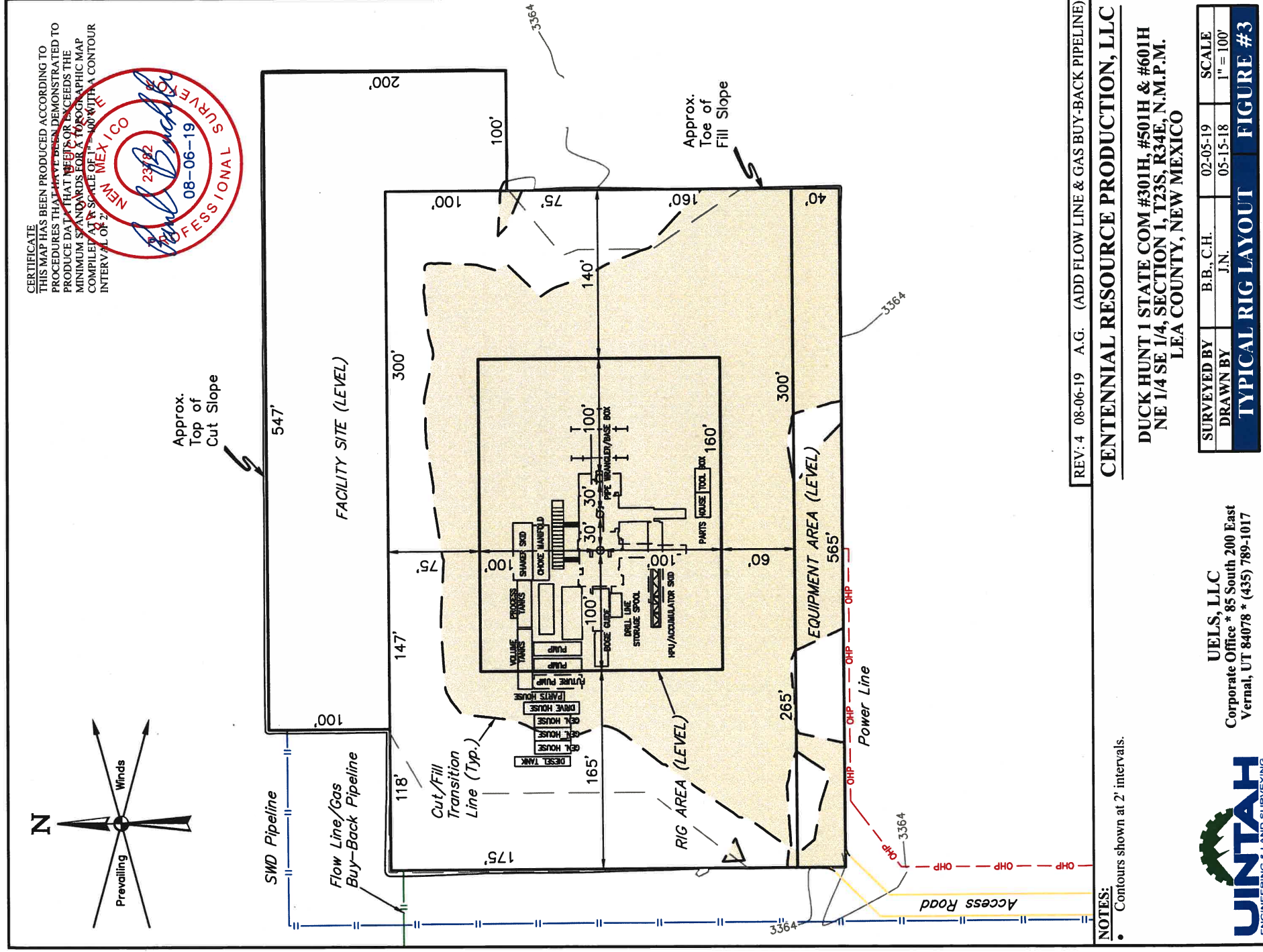
Fee

EZE COMMUNITIZED AREA

W2E2 COMMUNITIZED AREA

1

12



District I
1625 N. French Dr., Hobbs, NM 88240
Phone: (575) 393-6161 Fax: (575) 393-0720
District II
811 S. First St., Artesia, NM 88210
Phone: (575) 748-1283 Fax: (575) 748-9720
District III
1000 Rio Brazos Road, Aztec, NM 87410
Phone: (505) 334-6178 Fax: (505) 334-6170
District IV
1220 S. St. Francis Dr., Santa Fe, NM 87505
Phone: (505) 476-3460 Fax: (505) 476-3462

State of New Mexico
Energy, Minerals & Natural Resources Department
OIL CONSERVATION DIVISION
1220 South St. Francis Dr.
Santa Fe, NM 87505

Form C-102
Revised August 1, 2011
Submit one copy to appropriate
District Office

☐ AMENDED REPORT

WELL LOCATION AND ACREAGE DEDICATION PLAT

¹ API Number 30-025-45562	² Pool Code 2205	³ Pool Name Antelope Ridge; Bone Spring, North
⁴ Property Code 321644	⁵ Property Name DUCK HUNT I STATE COM	
⁷ OGRID No. 372165	⁸ Well Number #301H	
	⁹ Elevation 3365.1'	
¹⁰ Operator Name CENTENNIAL RESOURCE PRODUCTION, LLC		

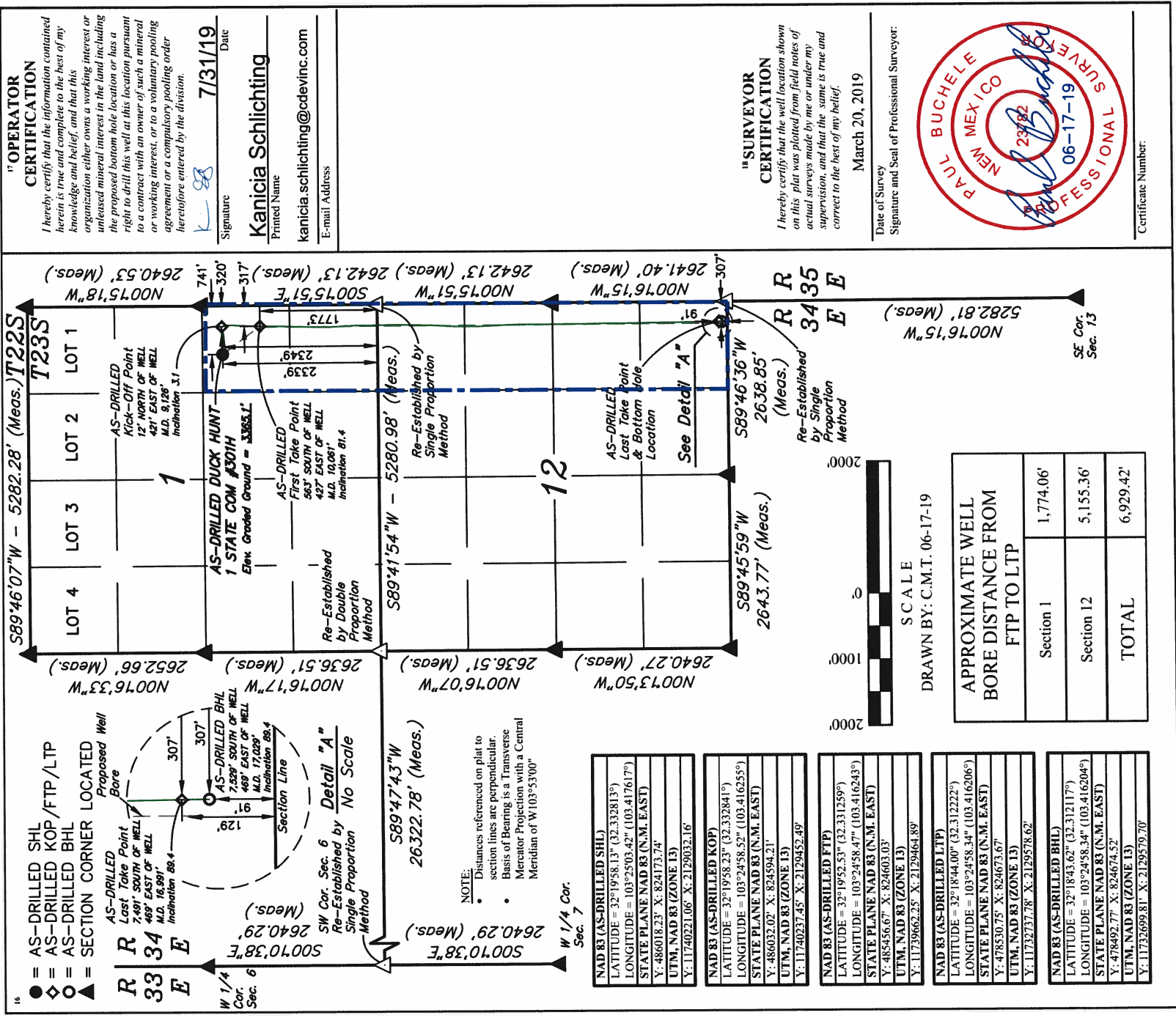
¹⁰ Surface Location

UL or lot no.	Section	Township	Range	Lot Idn	Feet from the	North/South line	Feet from the	East/West line	County
I	1	23S	34E		2339	SOUTH	741	EAST	LEA

¹¹ Bottom Hole Location If Different From Surface

UL or lot no.	Section	Township	Range	Lot Idn	Feet from the	North/South line	Feet from the	East/West line	County
P	12	23S	34E		91	SOUTH	307	EAST	LEA
¹² Dedicated Acres 240	¹³ Joint or Infill				¹⁴ Consolidation Code		¹⁵ Order No.		

No allowable will be assigned to this completion until all interests have been consolidated or a non-standard unit has been approved by the division.



☐ AMENDED REPORT

Certificate Number:

Form C-102
Revised August 1, 2011
Submit one copy to appropriate
District Office

☐ AMENDED REPORT

11 Bottom Hole Location If Different From Surface									
UL or lot no. P	Section 12	Township 23S	Range 34E	Lot Idn	Feet from the 100	North/South line SOUTH	Feet from the 990	East/West line EAST	County LEA
12 Dedicated Acres 240		13 Joint or Infill			14 Consolidation Code				
					15 Order No.				

16


"OPERATOR CERTIFICATION"

I hereby certify that the information contained herein is true and complete to the best of my knowledge and belief; and that this organization either owns a working interest or unleased mineral interest in the land including the proposed bottom hole location or has a right to drill this well at this location pursuant to a contract with an owner of such a mineral or working interest, or to a voluntary pooling agreement or a compulsory pooling order heretofore entered by the division.

Signature _____ Date _____
Printed Name _____
E-mail Address _____

"SURVEYOR CERTIFICATION"

I hereby certify that the well location shown on this plat was plotted from field notes of actual surveys made by me or under my supervision, and that the same is true and correct to the best of my belief;

November 08, 2018
Date of Survey
Signature and Seal of Professional Surveyor:


Certificate Number: _____

LINE TABLE

LINE	DIRECTION	LENGTH
L1	N62°14'19"E	1087.88'
L2	S89°46'36"W	2638.85'

**SW Cor. Sec. 6,
Re-Established by Single
Proportion Method**

**SE Cor. Sec. 1,
Re-Established by Double
Proportion Method**

REVISIONS:

- REV: 2 08-22-19 C.D. (SHL MOVE)
- = SURFACE HOLE LOCATION
- = FIRST TAKE POINT
- = LTP/BHL
- = SECTION CORNER LOCATED
- = SECTION CORNER RE-ESTABLISHED.

(Not Set on Ground.)

SCALE

2000'
1000'
0'
1000'
2000'

LEGEND:

- = SURFACE HOLE LOCATION
- ◆ = FIRST TAKE POINT
- = LTP/BHL
- ▲ = SECTION CORNER LOCATED
- △ = SECTION CORNER RE-ESTABLISHED.

(Not Set on Ground.)

NOTE:

- Distances referenced on plat to section lines are perpendicular.
- Basis of Bearing is a Transverse Mercator Projection with a Central Meridian of W103°53'00"
- Southeast Corner of Sections 1 & 12 Re-Established by Single Proportion Method.

NAD 83 (SURFACE HOLE LOCATION)

LATITUDE = 32°19'55.15" (32.331986°)
LONGITUDE = 103°25'17.57" (103.421546°)
STATE PLANE NAD 83 (N.M. EAST)
Y: 485707.19' X: 822962.69'
UTM, NAD 83 (ZONE 13)
Y: 11739002.52' X: 2127823.23'

NAD 83 (FIRST TAKE POINT)

LATITUDE = 32°20'00.12" (32.333367°)
LONGITUDE = 103°25'06.32" (103.418423°)
STATE PLANE NAD 83 (N.M. EAST)
Y: 486217.88' X: 823923.06'
UTM, NAD 83 (ZONE 13)
Y: 11740419.11' X: 2128780.28'

NAD 83 (LTP/BHL)

LATITUDE = 32°18'43.71" (32.312142°)
LONGITUDE = 103°25'06.29" (103.418415°)
STATE PLANE NAD 83 (N.M. EAST)
Y: 478496.12' X: 823991.38'
UTM, NAD 83 (ZONE 13)
Y: 11732698.91' X: 2128896.64'

SECTION 12

Section 12 Dimensions:

- Top: 2640.27' (Meas.)
- Bottom: 2640.27' (Meas.)
- Left: 2640.27' (Meas.)
- Right: 2640.27' (Meas.)

Section 12 Area: 2640.27' x 2640.27' = 6,971,081.49 sq ft

Section 12 Perimeter: 2640.27' + 2640.27' + 2640.27' + 2640.27' = 10,561.10'

Section 12 Shape: Rectangle

Section 12 Orientation: North arrow pointing towards the top-right corner of the section.

Section 12 Notes:

- The section is bounded by the following dimensions: Top: 2640.27' (Meas.), Bottom: 2640.27' (Meas.), Left: 2640.27' (Meas.), Right: 2640.27' (Meas.).
- The area of the section is 2640.27' x 2640.27' = 6,971,081.49 sq ft.
- The perimeter of the section is 2640.27' + 2640.27' + 2640.27' + 2640.27' = 10,561.10'.
- The shape of the section is a rectangle.
- The orientation of the section is North arrow pointing towards the top-right corner of the section.

Section 12 Legend:

- = SURFACE HOLE LOCATION
- ◆ = FIRST TAKE POINT
- = LTP/BHL
- ▲ = SECTION CORNER LOCATED
- △ = SECTION CORNER RE-ESTABLISHED.

(Not Set on Ground.)

Section 12 Scale:

2000'
1000'
0'
1000'
2000'

Section 12 Note:

Distances referenced on plat to section lines are perpendicular.

Basis of Bearing is a Transverse Mercator Projection with a Central Meridian of W103°53'00"

Southeast Corner of Sections 1 & 12 Re-Established by Single Proportion Method.

NAD 83 (SURFACE HOLE LOCATION)

LATITUDE = 32°19'55.15" (32.331986°)
LONGITUDE = 103°25'17.57" (103.421546°)
STATE PLANE NAD 83 (N.M. EAST)
Y: 485707.19' X: 822962.69'
UTM, NAD 83 (ZONE 13)
Y: 11739002.52' X: 2127823.23'

NAD 83 (FIRST TAKE POINT)

LATITUDE = 32°20'00.12" (32.333367°)
LONGITUDE = 103°25'06.32" (103.418423°)
STATE PLANE NAD 83 (N.M. EAST)
Y: 486217.88' X: 823923.06'
UTM, NAD 83 (ZONE 13)
Y: 11740419.11' X: 2128780.28'

NAD 83 (LTP/BHL)

LATITUDE = 32°18'43.71" (32.312142°)
LONGITUDE = 103°25'06.29" (103.418415°)
STATE PLANE NAD 83 (N.M. EAST)
Y: 478496.12' X: 823991.38'
UTM, NAD 83 (ZONE 13)
Y: 11732698.91' X: 2128896.64'

Section 12 Dimensions:

- Top: 2640.27' (Meas.)
- Bottom: 2640.27' (Meas.)
- Left: 2640.27' (Meas.)
- Right: 2640.27' (Meas.)

Section 12 Area: 2640.27' x 2640.27' = 6,971,081.49 sq ft

Section 12 Perimeter: 2640.27' + 2640.27' + 2640.27' + 2640.27' = 10,561.10'

Section 12 Shape: Rectangle

Section 12 Orientation: North arrow pointing towards the top-right corner of the section.

Section 12 Notes:

- The section is bounded by the following dimensions: Top: 2640.27' (Meas.), Bottom: 2640.27' (Meas.), Left: 2640.27' (Meas.), Right: 2640.27' (Meas.).
- The area of the section is 2640.27' x 2640.27' = 6,971,081.49 sq ft.
- The perimeter of the section is 2640.27' + 2640.27' + 2640.27' + 2640.27' = 10,561.10'.
- The shape of the section is a rectangle.
- The orientation of the section is North arrow pointing towards the top-right corner of the section.

Section 12 Legend:

- = SURFACE HOLE LOCATION
- ◆ = FIRST TAKE POINT
- = LTP/BHL
- ▲ = SECTION CORNER LOCATED
- △ = SECTION CORNER RE-ESTABLISHED.

(Not Set on Ground.)

Section 12 Scale:

2000'
1000'
0'
1000'
2000'

Section 12 Note:

Distances referenced on plat to section lines are perpendicular.

Basis of Bearing is a Transverse Mercator Projection with a Central Meridian of W103°53'00"

Southeast Corner of Sections 1 & 12 Re-Established by Single Proportion Method.

NAD 83 (SURFACE HOLE LOCATION)

LATITUDE = 32°19'55.15" (32.331986°)
LONGITUDE = 103°25'17.57" (103.421546°)
STATE PLANE NAD 83 (N.M. EAST)
Y: 485707.19' X: 822962.69'
UTM, NAD 83 (ZONE 13)
Y: 11739002.52' X: 2127823.23'

NAD 83 (FIRST TAKE POINT)

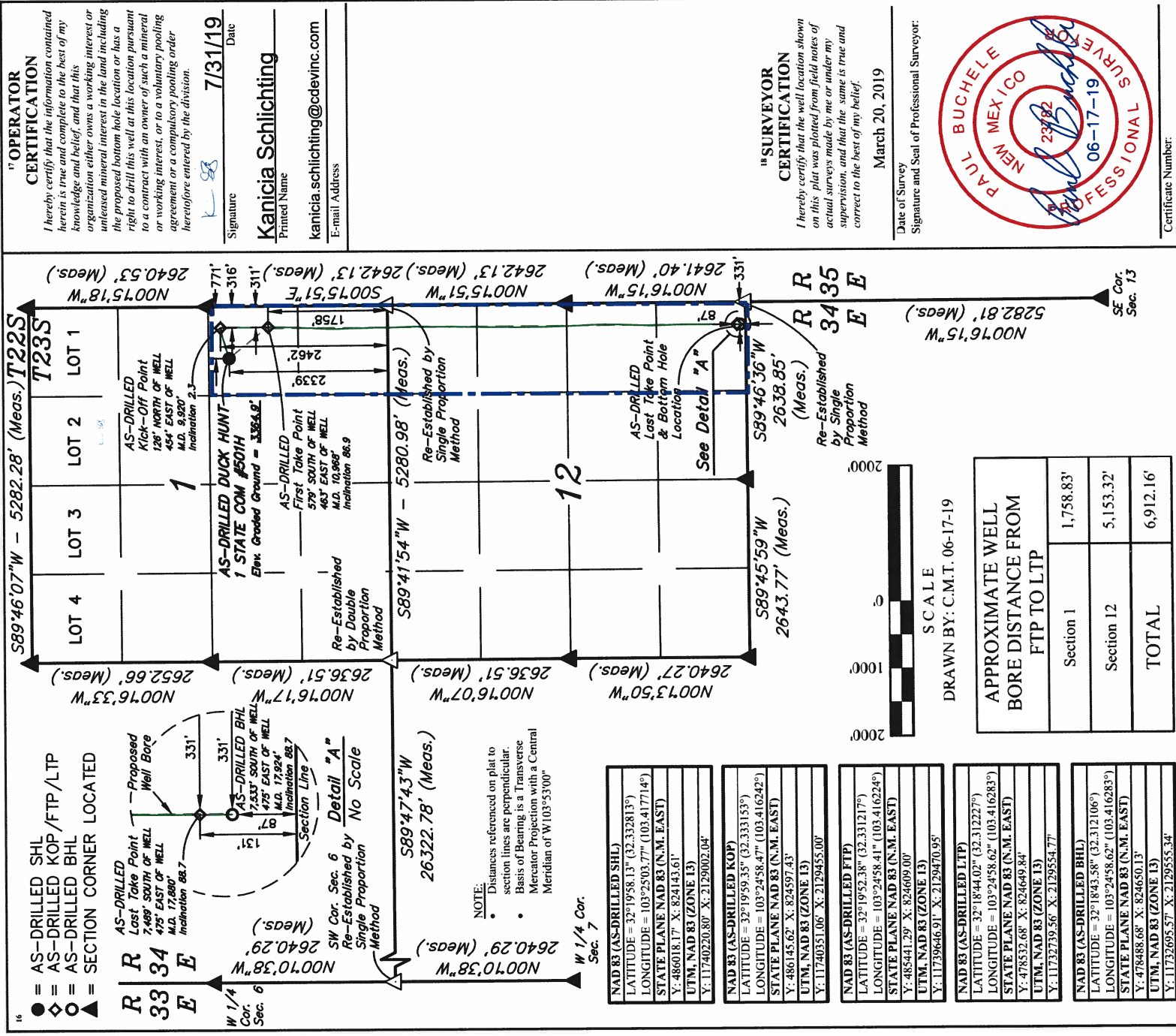
LATITUDE = 32°20'00.12" (32.333367°)
LONGITUDE = 103°25'06.32" (103.418423°)
STATE PLANE NAD 83 (N.M. EAST)
Y: 486217.88' X: 823923.06'
UTM, NAD 83 (ZONE 13)
Y: 11740419.11' X: 2128780.28'

NAD 83 (LTP/BHL)

LATITUDE = 32°18'43.71" (32.312142°)
LONGITUDE = 1

Form C-102
Revised August 1, 2011
Submit one copy to appropriate
District Office

☐ AMENDED REPORT



District I
1625 N. French Dr., Hobbs, NM 88240
Phone: (575) 393-6161 Fax: (575) 393-0720
District II
811 S. First St., Artesia, NM 88210
Phone: (575) 748-1283 Fax: (575) 748-9720
District III
1000 Rio Brazos Road, Aztec, NM 87410
Phone: (505) 334-6178 Fax: (505) 334-6170
District IV
1220 S. St. Francis Dr., Santa Fe, NM 87505
Phone: (505) 476-3460 Fax: (505) 476-3462

State of New Mexico
Energy, Minerals & Natural Resources Department
OIL CONSERVATION DIVISION
1220 South St. Francis Dr.
Santa Fe, NM 87505

Form C-102
Revised August 1, 2011
Submit one copy to appropriate
District Office

☐ AMENDED REPORT

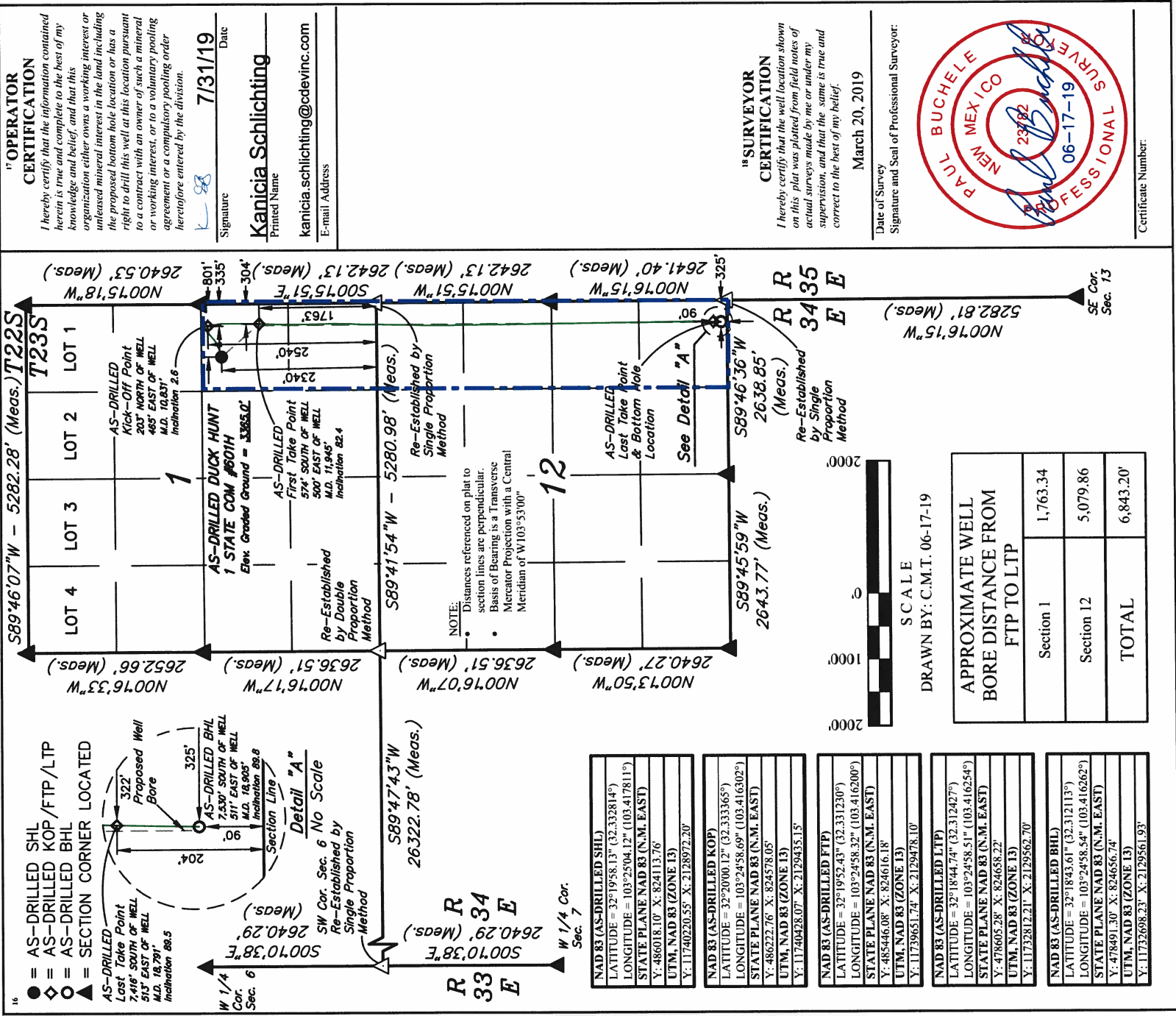
WELL LOCATION AND ACREAGE DEDICATION PLAT

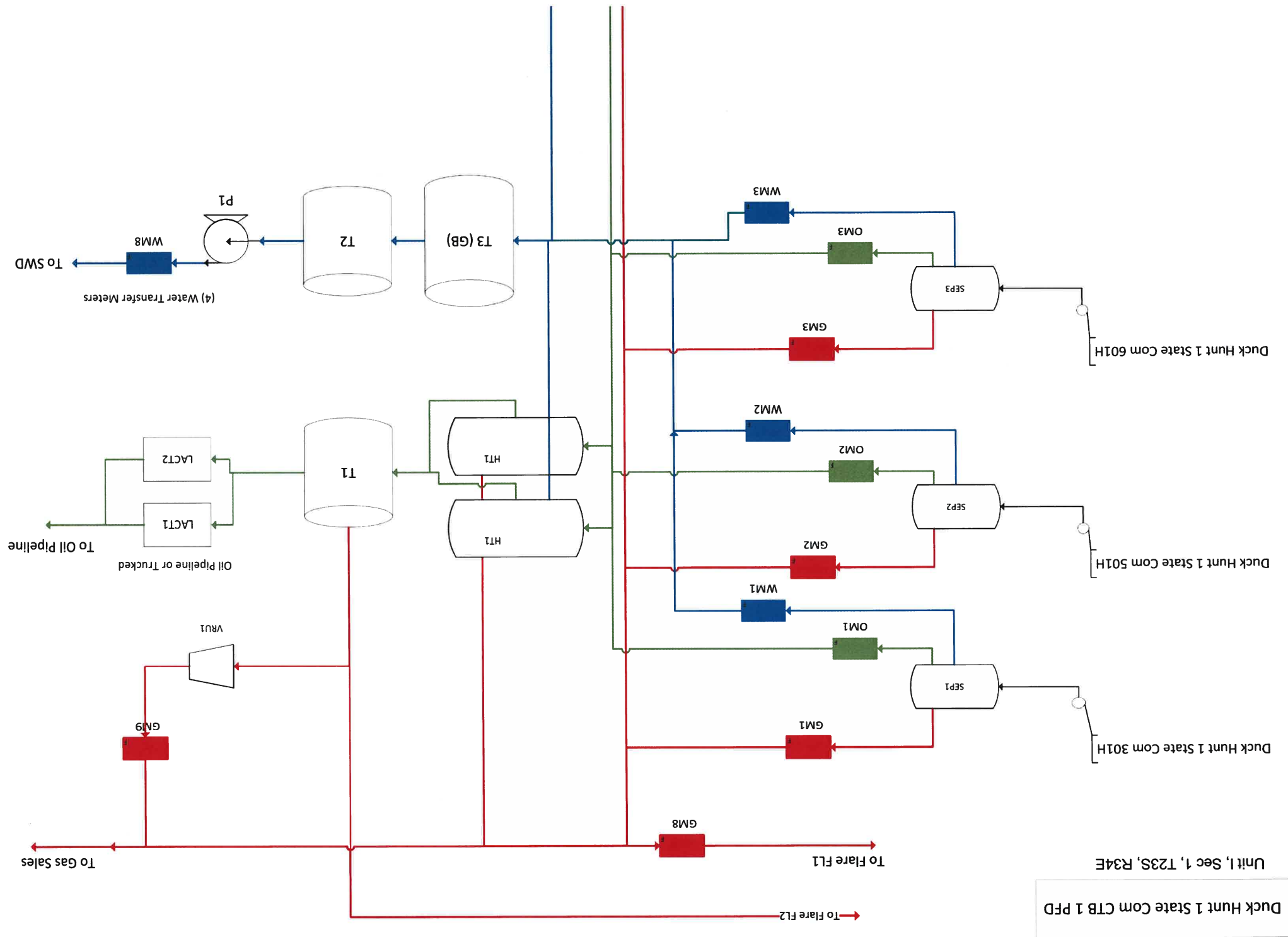
¹ API Number 30-025-45566	² Pool Code 2205	³ Pool Name Antelope Ridge; Bone Spring, North
⁴ Property Code 321644	⁵ Property Name DUCK HUNT 1 STATE COM	
⁷ OGRID No. 372165	⁸ Operator Name CENTENNIAL RESOURCE PRODUCTION, LLC	
⁶ Well Number #601H		⁹ Elevation 3365.0'

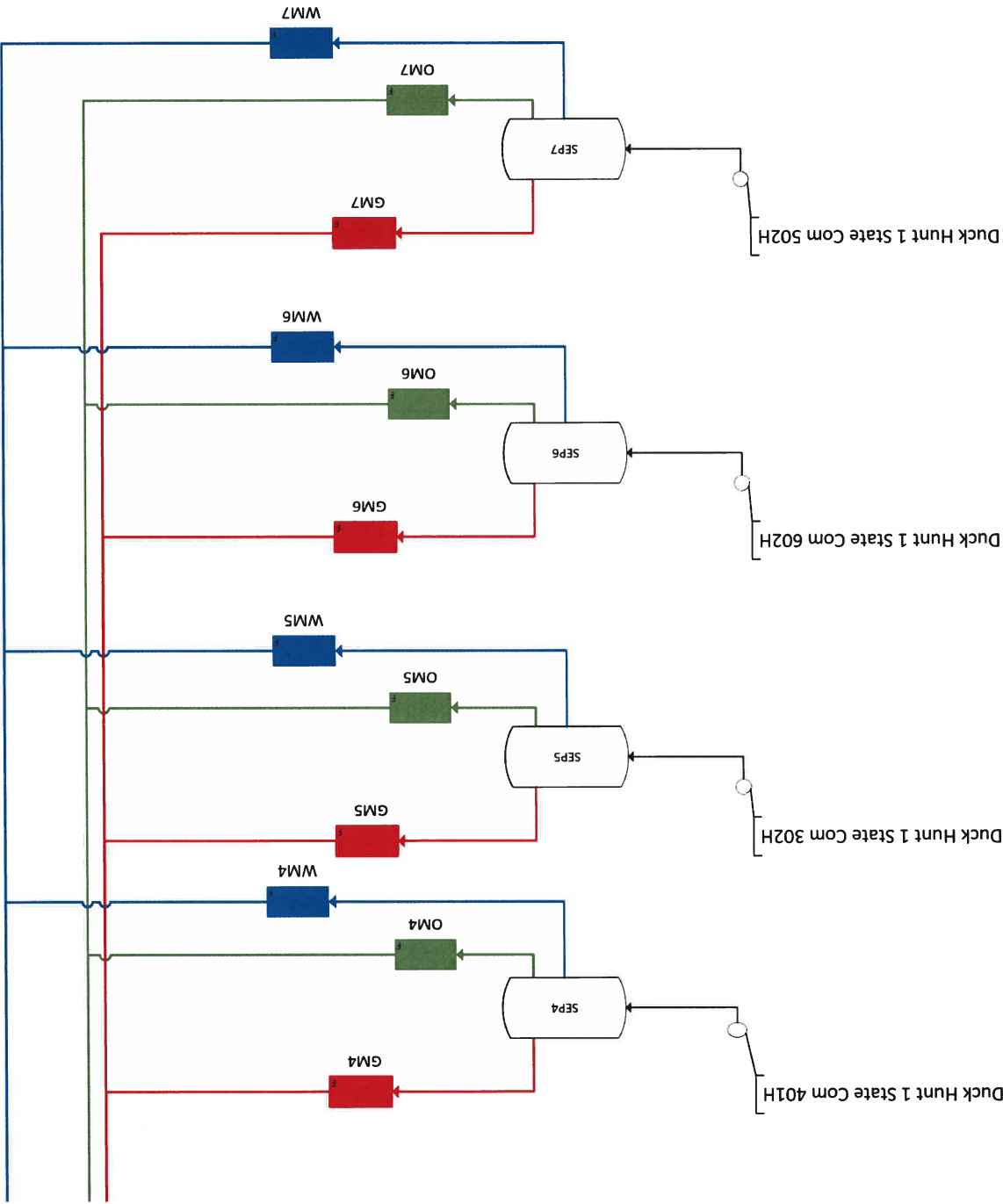
¹⁰ Surface Location				
UL or lot no.	Section	Township	Range	Lot
1	1	23S	34E	1
Feet from the	North/South line	East/West line	County	
2340	SOUTH	EAST	LEA	

¹¹ Bottom Hole Location If Different From Surface				
UL or lot no.	Section	Township	Range	Lot
P	12	23S	34E	1
Feet from the	North/South line	East/West line	County	
90	SOUTH	EAST	LEA	
¹² Dedicated Acres	¹³ Joint or Infill	¹⁴ Consolidation Code	¹⁵ Order No.	
240				

No allowable will be assigned to this completion until all interests have been consolidated or a non-standard unit has been approved by the division.







Legal Notice

Centennial Resource Production, LLC is applying to surface commingle seven wells to a central tank battery in Lea County, New Mexico. The central tank battery is located on the North side of the Duck Hunt 1 State Com 301H well pad. The seven wells, details and locations are the following:

Duck Hunt 1 State Com 301H located in the southeast quarter of section 1, T23S, R34E, Unit I, 2339 FSL & 741 FEL.

Duck Hunt 1 State Com 302H located in the southeast quarter of section 1, T23S, R34E, Unit J, 2039 FSL & 1985 FEL.

Duck Hunt 1 State Com 401H located in the southeast quarter of section 1, T23S, R34E, Unit J, 2039 FSL & 1955 FEL.

Duck Hunt 1 State Com 501H located in the southeast quarter of section 1, T23S, R34E, Unit I, 2339 FSL & 771 FEL.

Duck Hunt 1 State Com 502H located in the southeast quarter of section 1, T23S, R34E, Unit J, 2339 FSL & 1955 FEL.

Duck Hunt 1 State Com 601H located in the southeast quarter of section 1, T23S, R34E, Unit I, 2340 FSL & 801 FEL.

Duck Hunt 1 State Com 602H located in the southeast quarter of section 1, T23S, R34E, Unit J, 2339 FSL & 1985 FEL.

Interested parties must file objections or requests for hearing with the New Mexico Oil Conservation Division, 1220 South Saint Francis Dr., Santa Fe, NM 87505, within 20 days. Additional information can be obtained by contacting Kanicia Schlichting, Centennial Resource Production, LLC, 1001 17th Street, Suite 1800, Denver, CO 80202. Phone number is 720-499-1537.

Addresses	Names	Certified Mail
KMF Land, LLC 412 W 15th Street, 11th Floor New York, NY 10011	KMF Land, LLC412 W 15th	7019 1120 0000 2724 6273
Flatland Mineral Fund II, LP 4925 Greenville Ave, Suite 1100 Dallas, TX 75206	Flatland Mineral Fund II, LP	7019 1120 0000 2724 6280
Pegasus Resources, LLC P.O. Box 470698 Ft. Worth, TX 76147	Pegasus Resources, LLCPO	7019 1120 0000 2724 6297
McMullen Minerals, LLC P.O. Box 470857 Ft. Worth, TX 76147	McMullen Minerals, LLCPO	7019 1120 0000 2724 6297
TOC Holdings, LLC P.O. Box 10966 Midland, TX 79702	TOC Holdings, LLCPO	7019 1120 0000 2724 6310
JT Curtis III, LLC P.O. Box 1249 Mason, TX 76856	JT Curtis III, LLCP	7019 1120 0000 2724 6327
Cassius Carter 14208 N 21st Street Phoenix, AZ 85022	Cassius Carter14208 N 21st Street	7019 1120 0000 2724 6334
Rodney Carter P.O. Box 5010 Round Rock, TX 78683	Rodney CarterP.O. Box	7019 1120 0000 2724 6341
Powhattan Carter, III P.O. Box 516 Fort Sumner, NM 88119	Powhattan Carter, IIIPO	7019 1120 0000 2724 6358
Charles & Beverly Overton Trust P.O. Box 32 Yeso, NM 88136	Charles & Beverly Overton Trust	7019 1120 0000 2724 6358
Mary Moran Basden P.O. Box 3499 Tulsa, OK 74101	Mary Moran BasdenPO	7019 1120 0000 2724 6372
Stoltz Family Partnership, LP P.O. Box 1731 Midland, TX 79702	Stoltz Family Partnership, LPP	7019 1120 0000 2724 6136
South Fifth Energy LLC P.O. Box 130 Ruidoso, NM 88355	South Fifth Energy LLCP	7019 1120 0000 2724 6143
Benjamin T. Horton 7610 Winding Oaks Dr. Colorado Springs, CO 80919	Benjamin T. Horton7610 Winding Oaks	7019 1120 0000 2724 6150
Rebecca J. Horton 1300 Camino Euestre NW Albuquerque, NM	Rebecca J. Horton1300 Camino Euestre	7019 1120 0000 2724 6167
Michael Harrison Moore P.O. Box 51570 Midland, TX 79710	Michael Harrison MoorePO	7019 1120 0000 2724 6174
Daniel C. Scharbauer P.O. Box 2399 Midland, TX 79702	Daniel C. ScharbauerPO	7019 1120 0000 2724 6181
Douglas Scharbauer, JR. P.O. Box 10722 Midland, TX 79702	Douglas Scharbauer, JR.	7019 1120 0000 2724 7553
Karen J. Scharbauer P.O. Box 10722 Midland, TX 79702	Karen J. Scharbauer	7019 1120 0000 7560
Joseph Mark Gregory 8905 Random Road Fort Worth, TX 76136	Joseph Mark Gregory	7019 1120 0000 2724 6402
Kalkman Habeck Company P.O. Box 2518 Ardmore, OK 73402	Kalkman Habeck CompanyPO	7019 1120 0000 2724 7577

Heirs of Kate A. Herwig

Heirs of Kate A. Herwig		
Doris Elaine Raymond 8925 Winged Thistle Ct Raleigh, NC27617	Doris Elaine Raymond8925 Winged Thistle	7019 1120 0000 2724 7584
Roy G. Barton, Jr. 1919 N. Turner St. Hobbs, NM 88240	Roy G. Barton, Jr.	7019 1120 0000 2724 7591
Ryan Moore SSMTT GST Exempt Trust P.O. Box 471458 Fort Worth, TX 76147	Ryan Moore SSMTT GST Exempt TrustP.O.	7019 1120 0000 2724 6419
Ryan Moore SSMTT Non-Exempt Trust P.O. Box 471458 Fort Worth, TX 76147	Ryan Moore SSMTT Non-Exempt TrustP.O.	7019 1120 0000 2724 7607
Richard Miles Horton 300 16th Street Albuquerque, NM 87104	Richard Miles Hort	7019 1120 0000 2724 7614
Rebecca Fay Cheney 3517 Hampshire Dr. Arlington, TX 76103	Rebecca Fay Cheney	7019 1120 0000 2724 7652
Meridian 102, LP 16400 Dallas Parkway, Suite 400 Dallas, TX 75248	Meridian 102, LP1	7019 1120 0000 2724 6198
Venable Royalty, Ltd 5910 North Central Expressway, Ste. 1470 Dallas, TX 75206	Venable Royalty, L	7019 1120 0000 2724 6204
V14, LP 5910 North Central Expressway, Ste. 1470 Dallas, TX 75206	V14, LP5910 North	7019 1120 0000 2724 6211
JVO, LLC 5910 North Central Expressway, Ste. 1470 Dallas, TX 75206	JVO, LLC5910 Nort	7019 1120 0000 2724 6228
Apache Corporation 303 Veterans Airpark Lane, Suite 1000 Midland, TX 79705	Apache Corporation	7019 1120 0000 2724 6112
Veritas Permian Resources, LLC P.O. Box 10850, Forth Worth, Texas 76114	Veritas Permian Resources, LLCP.O.	7019 1120 0000 2724 6235
Energen Resources, Inc. 500 West Texas Ave., Suite 1200 Midland, Texas 79701	Energen Resources, Inc.500 West Texas Ave.	7019 1120 0000 2724 6129
Marathon Oil Permian, LLC 5555 San Felipe Street Houston, Texas 77056	Marathon Oil Permi	7019 1120 0000 2724 6242
Roy G. Barton, Jr. 1919 North Turner Street Hobbs, New Mexico 88240	Roy G. Barton, Jr.	7019 1120 0000 2724 6396
Springbok Energy Partners II, LLC 5950 Berkshire Lane, Ste. 250 Dallas, TX 75225	Springbok Energy P	7019 1120 0000 2724 7140
Silver Spur Resources, LLC P.O. Box 92761 Southlake, TX 76092	Silver Spur Resources, LLCP.O.	7019 1120 0000 2724 7157
Norma Baird Loving 2009 Crockett Court Irving, TX 75038	Norma Baird Loving	7019 1120 0000 2724 7164
Jetstream Royalty Partners, LP 105 Nursery Lane, Suite 220 Ft. Worth, TX 76114	Jetstream Royalty	7019 1120 0000 2724 7171
Charlotte S.E. Garza 324 Heneretta Drive Hurst, TX 76054	Charlotte S.E.	7019 1120 0000 2724 7188
Jeanene Hall 613 D Bullock Socorro, NM 87801	Jeanene Hall613 D	7019 1120 0000 2724 7195

William K. Hollis 1610 Heritage Mission, TX 78572 Shamrock Royalty, LLC 200 W. Highway 6, Suite 320 Woodway, TX 76712 University of the Southwest Foundation 6610 N. Lovington Hoghway Hobbs, NM 88240 Caddo Minerals, Inc. 2714 Bee Cave Road, Suite 202 Austin, TX 78746 Maven Royalty Fund, LP 620 Texas Street, Suite 300 Shreveport, LA 71101	William K. Hollis Shamrock Royalty, University of the Caddo Minerals, In Maven Royalty Fund	7019 1120 0000 2724 7201 7019 1120 0000 2724 7218 7019 1120 0000 2724 7225 7019 1120 0000 2724 7232 7019 1120 0000 2724 7249
BOKF, as Agent for Mary Moran Basden P.O. Box 3499 Tulsa, OK 74101 Pat Corrigan Trust P.O. Box 690068 Vero Beach, FL 32969 C.E. Corrigan Trust fbo Eleanor Christie Corrigan P.O. Box 63869 Colorado Springs, CO 80962 C.E. Corrigan Trust fbo Hugh Daniels Corrigan P.O. Box 690068 Vero Beach, FL 32969 C.E. Corrigan Trust fbo James Patrick Corrigan, Jr. P.O. Box 690068 Vero Beach, FL 32969	BOKF, as Agent for Mary Moran BasdenP.O. Pat Corrigan TrustP.O. C.E. C.E. C.E.	7019 1120 0000 2724 7256 7019 1120 0000 2724 7263 7019 1120 0000 2724 7270 7019 1120 0000 2724 7287 7019 1120 0000 2724 7294
C.E. Corrigan Trust, fbo Hugh Corrigan, IV 8117 Preston Road, Suite 610 Dallas, TX 75225 Hugh Corrigan, IV Power of Appointment Trust 8117 Preston Road, Suite 610 Dallas, TX 75225	C.E. C.E. Hugh Corrigan, IV	7019 1120 0000 2724 7300 7019 1120 0000 2724 7317
P.E. Corrigan Power of Appointment Trust P.O. Box 643726 Vero Beach, FL 32964 C.E. Corrigan Trust, fbo Patrick Edward Corrigan P.O. Box 643726 Vero Beach, FL 32964 Viper Energy Partners LLC 500 W. Texas Ave., Ste. 1200 Midland, TX 79701 Southwestern Baptist Theological Seminary 1601 Elm Street, Suite 1700 Dallas, TX 75201	P.E. C.E. Viper Energy Partners LLC500 W. Texas Ave. Southwestern Bapti Venable Royalty, L V14, LP5910 North JVO, LLC5910 Nort	7019 1120 0000 2724 7324 7019 1120 0000 2724 7331 7019 1120 0000 2724 7348 7019 1120 0000 2724 7355 7019 1120 0000 2724 7362 7019 1120 0000 2724 7379
Venable Royalty, Ltd 5910 North Central Expressway, Ste. 1470 Dallas, TX 75206 V14, LP 5910 North Central Expressway, Ste. 1470 Dallas, TX 75206 JVO, LLC 5910 North Central Expressway, Ste. 1470 Dallas, TX 75206 Beverly B. Blair 2635 Bamboo Drive Lake Havasu City, AZ 86403 J.L. Burke, III 8928 Meadowknoll Drive Dallas, TX 75243 Marilyn Burke Salter 20031 82nd Avenue W Edmonds, Washington 98026 Nancy I. Farmer 5136 E. 35th Street Tulsa, OK 74135	Beverly B. Blair2 J.L. Marilyn Burke Salt Nancy I. Farmer5136 E. Nancy I. Farmer5136 E.	7019 1120 0000 2724 7393 7019 1120 0000 2724 7409 7019 1120 0000 2724 7416 7019 1120 0000 2724 7423

Michael J. Freck P.O. Box 5121 Sam Rayburn, TX 75951	Michael J. FreckP.	7019 1120 0000 2724 7430
Shawn J. Freck 40578 N. High Meadows Dr. San Tan Valley, AZ 85140	Shawn J. Freck40578 N.	7019 1120 0000 2724 7447
Karen Freck Rognerud 30104 Cibolo Oaks Fair Oaks Ranch, TX 78015	Karen Freck Rogner	7019 1120 0000 2724 7454
Michael Hall Medlin P.O. Box 506 Boerne, TX 78006	Michael Hall MedlinP.O.	7019 1120 0000 2724 7461
James M. Davis P.O. Box 4251 Midland, TX 79704	James M. DavisP.	7019 1120 0000 2724 7478
Robert L. Freck 8213 Antero Place El Paso, TX 79904	Robert L. Freck82	7019 1120 0000 2724 7485
Georgia Davis Griffith 941 Bois D Arc St. Whitesboro, TX 76273	Georgia Davis Grif	7019 1120 0000 2724 7492
Terry Lynn Holt a/k/a Terry Davis Holt 1922 Vintage Dr. Corinth, TX 76210	Terry Lynn Holt a/	7019 1120 0000 2724 7508
LaDonna Davis Hammack 2911 Sable Xing San Antonio, TX 78232	LaDonna Davis Hamm	7019 1120 0000 2724 7522
Allen Clay Davis P.O. Box 962 Ardmore, OK 73402	Allen Clay DavisP.O.	7019 1120 0000 2724 7539
The Lee & Judy Davis Revocable Trust 1625 9th Avenue SE Saint Cloud, MN 56304	The Lee & Judy Dav	7019 1120 0000 2724 7546
Joseph Mark Gregory 8905 Random Road Fort Worth, TX 76136	Joseph Mark Gregor	7019 1120 0000 2724 7669
Doris Elaine Raymond 8925 Winged Thistle Ct Raleigh, NC27617	Doris Elaine Raymo	7019 1120 0000 2724 7676
Kalkman Habeck Company P.O. Box 2518 Ardmore, OK 73402	Kalkman Habeck CompanyP.O. Heirs of Kate Herw	7019 1120 0000 2724 6068
Heirs of Kate Herwig Jerry Dwayne Billington 4433 Lipscomb Amarillo, TX 79110	Jerry Dwayne Billi	7019 1120 0000 2724 6075
West Texas A&M University 2501 4th Avenue Canyon, TX 79016	West Texas A&M Uni	7019 1120 0000 2724 6082
Texas Technological University P.O. Box 41081 Lubbock, TX 79409	Texas Technological UniversityP.O.	7019 1120 0000 2724 6099
Ohio State University 53 W. 11th St. Columbus, Ohio 43201	Ohio State University53 W. 11th St.	7019 1120 0000 2724 6105
MRC Permian, LLC 5400 LBJ Freeway, Suite 1500 Dallas, Texas 75240	MRC Permian, LLCs	7019 1120 0000 2724 6259
ConocoPhillips Company 600 North Dairy Ashford Houston, Texas 77079	ConocoPhillips Com	7019 1120 0000 2724 6266
New Mexico State Land Office 310 Old Santa Fe Trail Santa Fe, NM 87501	New Mexico State Land Office Dorthy Heard	7019 1120 0000 2724 6389
Dorthy Heard		