

7TYQU-191205-C-107B 640

Revised March 23, 2017

RECEIVED: 12/5/19	REVIEWER:	TYPE: PLC	APP NO: pDM1935355790
-------------------	-----------	-----------	-----------------------

ABOVE THIS TABLE FOR OCD DIVISION USE ONLY

NEW MEXICO OIL CONSERVATION DIVISION
 - Geological & Engineering Bureau -
 1220 South St. Francis Drive, Santa Fe, NM 87505

**ADMINISTRATIVE APPLICATION CHECKLIST**

THIS CHECKLIST IS MANDATORY FOR ALL ADMINISTRATIVE APPLICATIONS FOR EXCEPTIONS TO DIVISION RULES AND
 REGULATIONS WHICH REQUIRE PROCESSING AT THE DIVISION LEVEL IN SANTA FE

Applicant: OXY USA INC **OGRID Number:** 16696 ⁷³
Well Name: OXBOW CC 17 08 FEDERAL COM #031H & MULTIPLE **API:** 30-015-45083 & MULTIPLE
Pool: PURPLE SAGE; WOLFCAMP & PIERCE CROSSING; BONE SPRING **Pool Code:** 98220 & 50371

**SUBMIT ACCURATE AND COMPLETE INFORMATION REQUIRED TO PROCESS THE TYPE OF APPLICATION
 INDICATED BELOW**

1) TYPE OF APPLICATION: Check those which apply for (A)

A. Location - Spacing Unit - Simultaneous Dedication

☐ NSL☐ NSP (PROJECT AREA)☐ NSP (PRORATION UNIT)☐ SD

B. Check one only for (I) or (II)

(I) Commingling - Storage - Measurement

☐ DHC☐ CTB☐ PLC☒ PC☐ OLS☐ OLM

(II) Injection - Disposal - Pressure Increase - Enhanced Oil Recovery

☐ WFX☐ PMX☐ SWD☐ IPI☐ EOR☐ PPR**2) NOTIFICATION REQUIRED TO:** Check those which apply.A. ☒ Offset operators or lease holders *WIO were notified for ULM.*B. ☐ Royalty, overriding royalty owners, revenue ownersC. ☐ Application requires published noticeD. ☐ Notification and/or concurrent approval by SLOE. ☒ Notification and/or concurrent approval by BLMF. ☐ Surface ownerG. ☐ For all of the above, proof of notification or publication is attached, and/or,H. ☐ No notice required**FOR OCD ONLY**☐ Notice Complete
☐ Application
 Content
 Complete

3) CERTIFICATION: I hereby certify that the information submitted with this application for administrative approval is **accurate** and **complete** to the best of my knowledge. I also understand that **no action** will be taken on this application until the required information and notifications are submitted to the Division.

Note: Statement must be completed by an individual with managerial and/or supervisory capacity.

Kathleen Mowery
 Print or Type Name

12-5-19
 Date

713-366-5109
 Phone Number

Kathleen Mowery
 Signature

Kathleen_Mowery@oxy.com
 e-mail Address

Submit 1 Copy To Appropriate District Office
 District I – (575) 393-6161
 1625 N. French Dr., Hobbs, NM 88240
 District II – (575) 748-1283
 811 S. First St., Artesia, NM 88210
 District III – (505) 334-6178
 1000 Rio Brazos Rd., Aztec, NM 87410
 District IV – (505) 476-3460
 1220 S. St. Francis Dr., Santa Fe, NM 87505

State of New Mexico
 Energy, Minerals and Natural Resources

Form C-103
 Revised July 18, 2013

OIL CONSERVATION DIVISION
 1220 South St. Francis Dr.
 Santa Fe, NM 87505

WELL API NO. 30-015-45083
5. Indicate Type of Lease STATE <input type="checkbox"/> FEE <input type="checkbox"/>
6. State Oil & Gas Lease No.
7. Lease Name or Unit Agreement Name OXBOW CC 17 08 FEDERAL COM
8. Well Number #031H
9. OGRID Number 16696
10. Pool name or Wildcat PURPLE SAGE; WOLFCAMP
11. Elevation (Show whether DR, RKB, RT, GR, etc.)

SUNDRY NOTICES AND REPORTS ON WELLS (DO NOT USE THIS FORM FOR PROPOSALS TO DRILL OR TO DEEPEN OR PLUG BACK TO A DIFFERENT RESERVOIR. USE "APPLICATION FOR PERMIT" (FORM C-101) FOR SUCH PROPOSALS.)	
1. Type of Well: Oil Well <input checked="" type="checkbox"/> Gas Well <input type="checkbox"/> Other <input type="checkbox"/>	
2. Name of Operator OXY USA INC	
3. Address of Operator 5 GREENWAY PLAZA SUITE 110, HOUSTON, TX, 77046	
4. Well Location Unit Letter <u>M</u> : <u>432</u> feet from the <u>SOUTH</u> line and <u>1223</u> feet from the <u>WEST</u> line Section <u>17</u> Township <u>24S</u> Range <u>29E</u> NMPM County <u>EDDY</u>	
11. Elevation (Show whether DR, RKB, RT, GR, etc.)	

12. Check Appropriate Box to Indicate Nature of Notice, Report or Other Data

NOTICE OF INTENTION TO:	SUBSEQUENT REPORT OF:
PERFORM REMEDIAL WORK <input type="checkbox"/>	REMEDIAL WORK <input type="checkbox"/>
TEMPORARILY ABANDON <input type="checkbox"/>	ALTERING CASING <input type="checkbox"/>
PULL OR ALTER CASING <input type="checkbox"/>	COMMENCE DRILLING OPNS. <input type="checkbox"/>
DOWNHOLE COMMINGLE <input type="checkbox"/>	P AND A <input type="checkbox"/>
CLOSED-LOOP SYSTEM <input type="checkbox"/>	CASING/CEMENT JOB <input type="checkbox"/>
OTHER: POOL COMMINGLE & OFF-LEASE MEASUREMENT <input checked="" type="checkbox"/>	OTHER: <input type="checkbox"/>

13. Describe proposed or completed operations. (Clearly state all pertinent details, and give pertinent dates, including estimated date of starting any proposed work). SEE RULE 19.15.7.14 NMAC. For Multiple Completions: Attach wellbore diagram of proposed completion or recompletion.

OXY USA INC requests approval of a surface pool commingle and off-lease storage, measurement and sales for Train #3 at the Salt Flat CTB (C-20-24S-29E) for the wells listed below and future wells within the same pools and leases. Wells with identical CA boundaries will flow to the same facility train. Production from the trains will be kept separate and not commingled. Detailed information is attached.

Well Name	API	Pool
Oxbow CC 17 08 Federal Com #031H	30-015-45083	PURPLE SAGE; WOLFCAMP
Oxbow CC 17 08 Federal Com #032H	30-015-45084	PURPLE SAGE; WOLFCAMP
Oxbow CC 17 08 Federal Com #037H	30-015-46400	PURPLE SAGE; WOLFCAMP
Oxbow CC 17 08 Federal Com #033H	30-015-45085	PIERCE CROSSING; BONE SPRING

Spud Date:

Rig Release Date:

I hereby certify that the information above is true and complete to the best of my knowledge and belief.

SIGNATURE Kathleen Maweny TITLE Regulatory Engineer DATE 12-5-19
 Type or print name Kathleen Maweny E-mail address: kathleen-maweny@oxy.com PHONE: 713-366-5169
For State Use Only

APPROVED BY: _____ TITLE _____ DATE _____
 Conditions of Approval (if any): _____

APPLICATION FOR POOL COMMINGLE & OFF-LEASE STORAGE, MEASUREMENT AND SALES

Commingling proposal for the Salt Flat CTB – Train #3

OXY USA INC respectfully requests approval of a pool commingle and off-lease storage, measurement and sales for Train #3 at the Salt Flat CTB (Lat 32.208183, Long -104.010796, C- 20-24S-29E). Oxbow CC 17 08 Federal Com #031H, Oxbow CC 17 08 Federal Com #032H, Oxbow CC 17 08 Federal Com #037H, and Oxbow CC 17 08 Federal Com #033H will produce to Train #3 and require a pool commingle and off-lease storage, measurement and sales. Production from the four Trains will be kept separate and only commingled downstream of the LACT used for the BLM's royalty payments.

POOL COMMINGLE & OFF-LEASE STORAGE, MEASUREMENT AND SALES - TRAIN #3

POOLS: PIERCE CROSSING; BONE SPRING (50371) & PURPLE SAGE; WOLFCAMP (98220)

COM AGREEMENTS PENDING

37.5% BLM ROYALTY 12.5% (NMNM 117120) & 12.5% BLM ROYALTY 12.5% (NMNM 102913) & 12.5% BLM ROYALTY 12.5% (NMLC 065970C) &

12.5% BLM ROYALTY 12.5% (NMNM 94651) & 25% FEE FOR BLM INTEREST ALLOCATION OF 9.375%

Well Name	API	Surface Location	Pool	POOL CODE	EST DATE ONLINE	Est. Oil (bpd)	Est. Gravity API	Est. Gas (MSCFD)	Est. BTU/cf	Est. Water (bpd)
Oxbow CC 17 08 Federal Com #031H	30-015-45083	M-17-24S-29E	PURPLE SAGE; WOLFCAMP	98220	Mar-20	1098	44	2605	1300	2935
Oxbow CC 17 08 Federal Com #032H	30-015-45084	M-17-24S-29E	PURPLE SAGE; WOLFCAMP	98220	Mar-20	1098	44	2605	1300	2935
Oxbow CC 17 08 Federal Com #037H	30-015-46400	N-17-24S-29E	PURPLE SAGE; WOLFCAMP	98220	Mar-20	1098	44	2605	1300	2935
Oxbow CC 17 08 Federal Com #033H	30-015-45085	M-17-24S-29E	PIERCE CROSSING; BONE SPRING	50371	Mar-20	1098	44	2605	1300	2935

Process Description:

For each Facility Train, production is sent through a 10' X 40' three-phase production separator. Oil production flows through a line heater then to an 8' X 20' heater treater before being sent to a 4' vapor recovery tower. Oil then flows to two oil storage tanks before being pumped through one of two LACT meters S/N*, which will serve as the FMPs for BLM royalty payments. Oil from all four trains then combines and routes to two oil storage tanks before being pumped through one of three LACT meters S/N*, which will serve as Oxy's sales point. A truck load FMP will be set up at the Facility for use as back-up in the event of a LACT meter failure.

Oil and gas production will be allocated back to each well based on well test. For testing purposes, each Train will be equipped with one permanent 8' x 20' three-phase test separator. Each test vessel will be equipped with oil turbine meters (S/N*), gas orifice meters (S/N*) and water turbine meters.

All wells will be tested daily prior to Range 1 of decline, and will be tested at least three times per month during Range 1 of decline. When Range 2 decline is started, the wells will be tested at least twice per month. Wells will be tested at least once per month when Range 3 of decline is started, as specified in Hearing Order R-14299.

*Meter number to be submitted upon installation. The oil and gas meters will be calibrated on a regular basis per API, NMOCD and BLM specifications.

Gas production from all wells at each Train will be combined after the production and test separators. It will then flow through an orifice meter S/N*, which will serve as the gas FMP for that Train for the purpose of BLM royalty payment, then sent to one of two 5' x 10' gas scrubbers, and then sent to sales.

All water from the Salt Flat CTB will be sent to the Cedar Canyon Water Disposal System.

*Meter number to be submitted upon installation. The oil and gas meters will be calibrated on a regular basis per API, NMOCD and BLM specifications.

Additional Application Components:

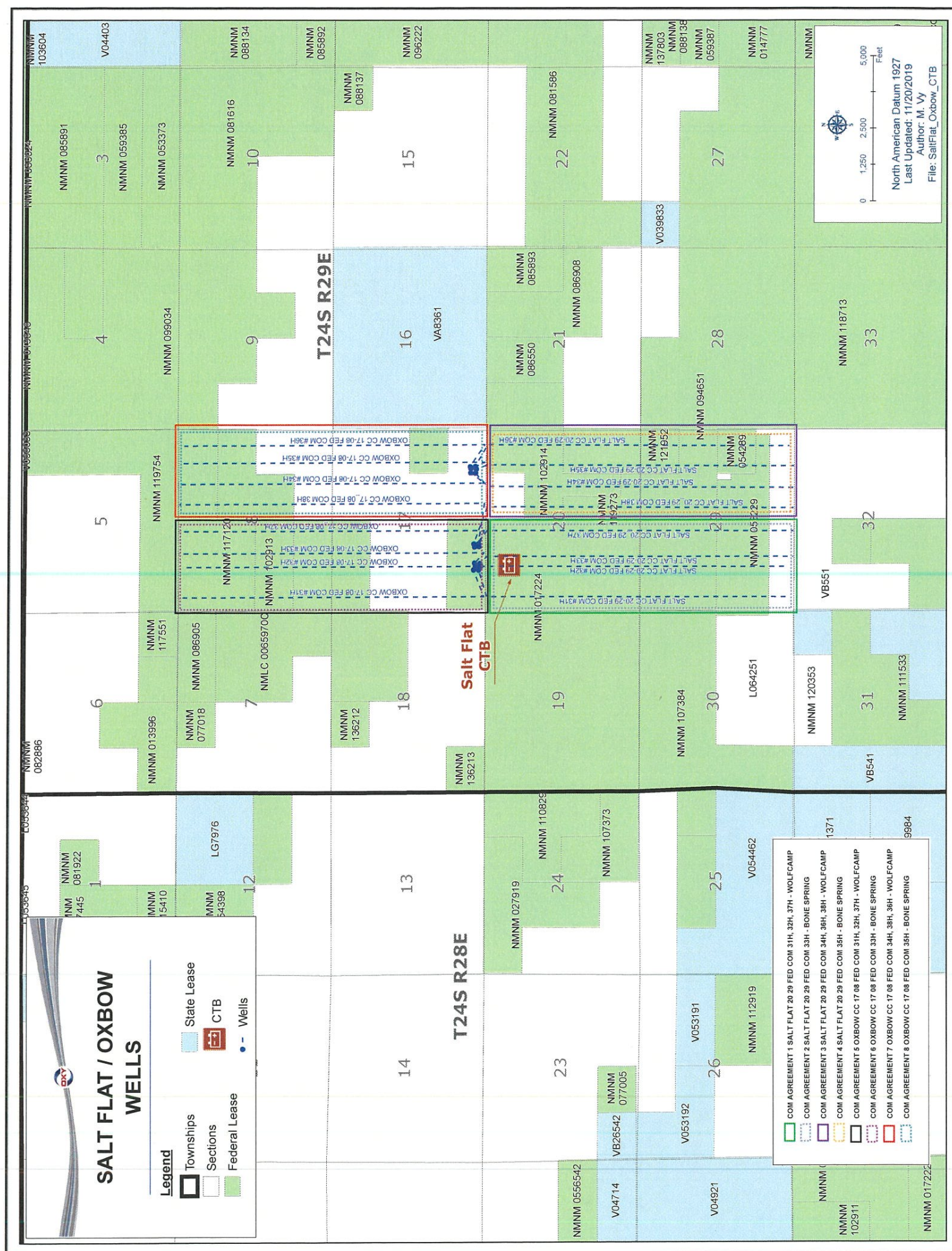
The flow of production is shown in detail on the enclosed facility diagram. Also enclosed is a map detailing the lease boundaries, well and battery locations.

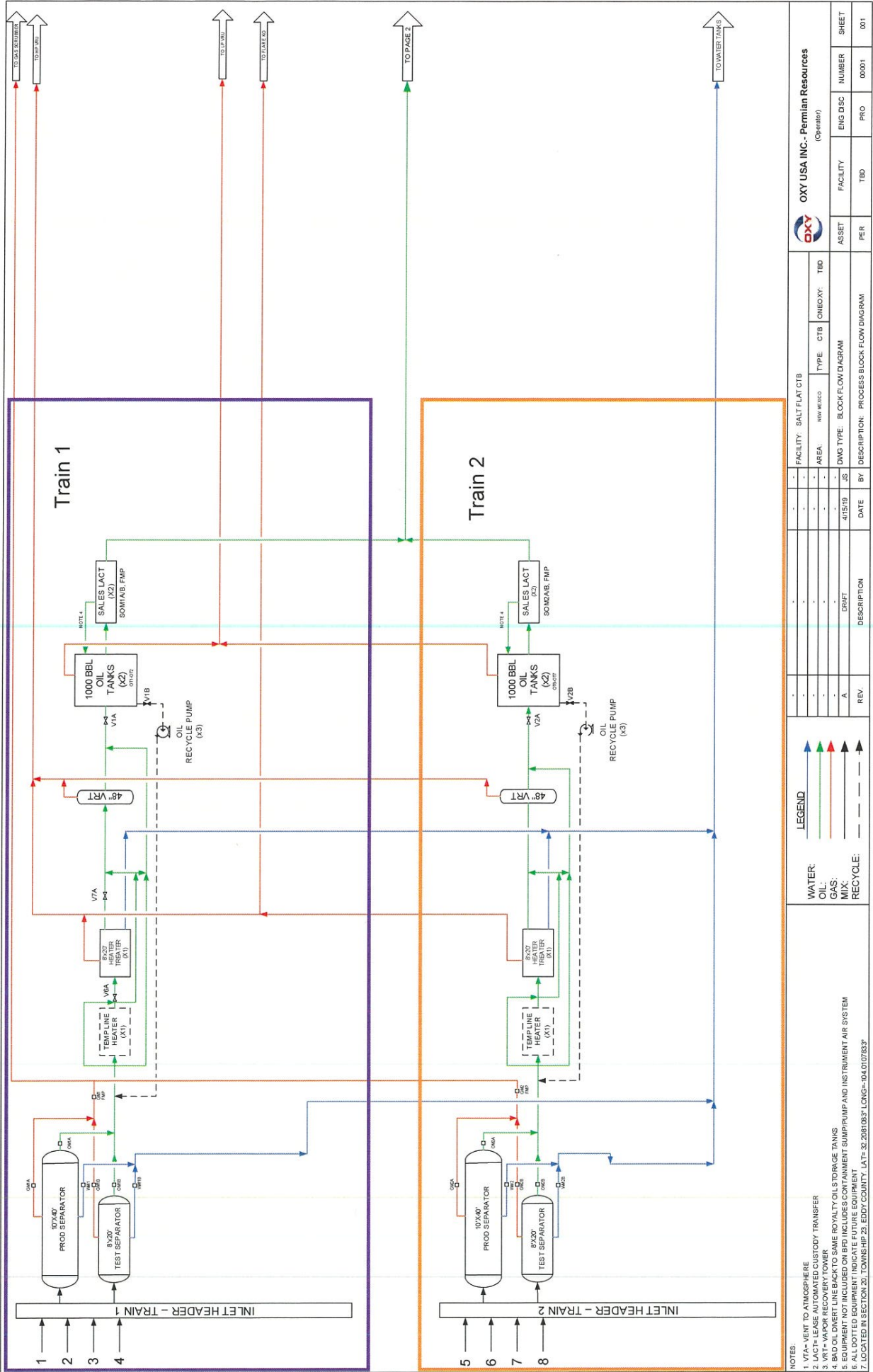
All wells in each train have identical ownership therefore notification was not required.

Pursuant to Statewide rule 19.15.12.10(C)(4)(g) OXY USA INC requests the option to include additional pools or leases within the defined parameters set forth in the Order for future additions.

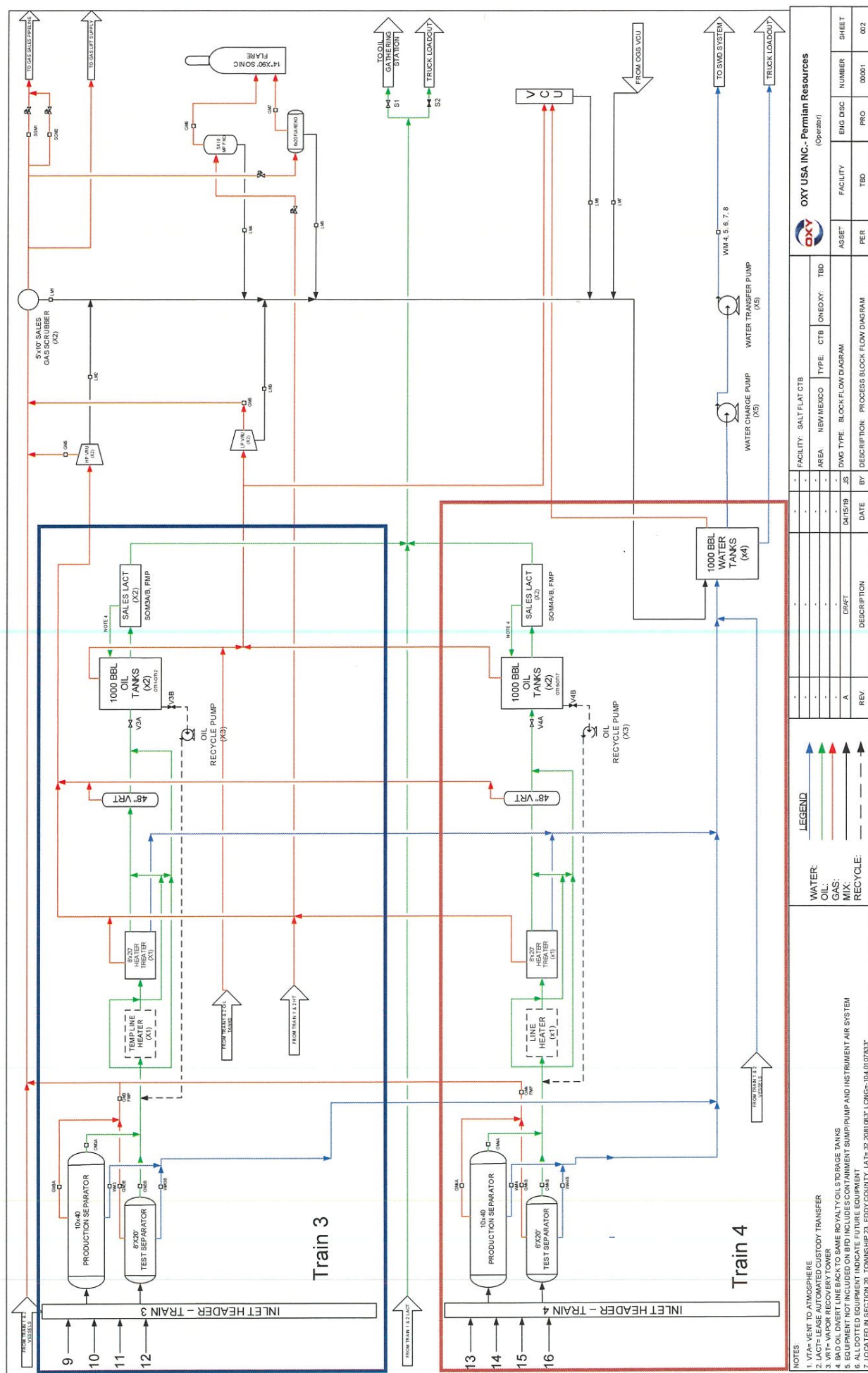
Commingling this production is the most effective means of producing the reserves. The surface commingle application will be submitted separately for approval per NMOCD and BLM regulations.

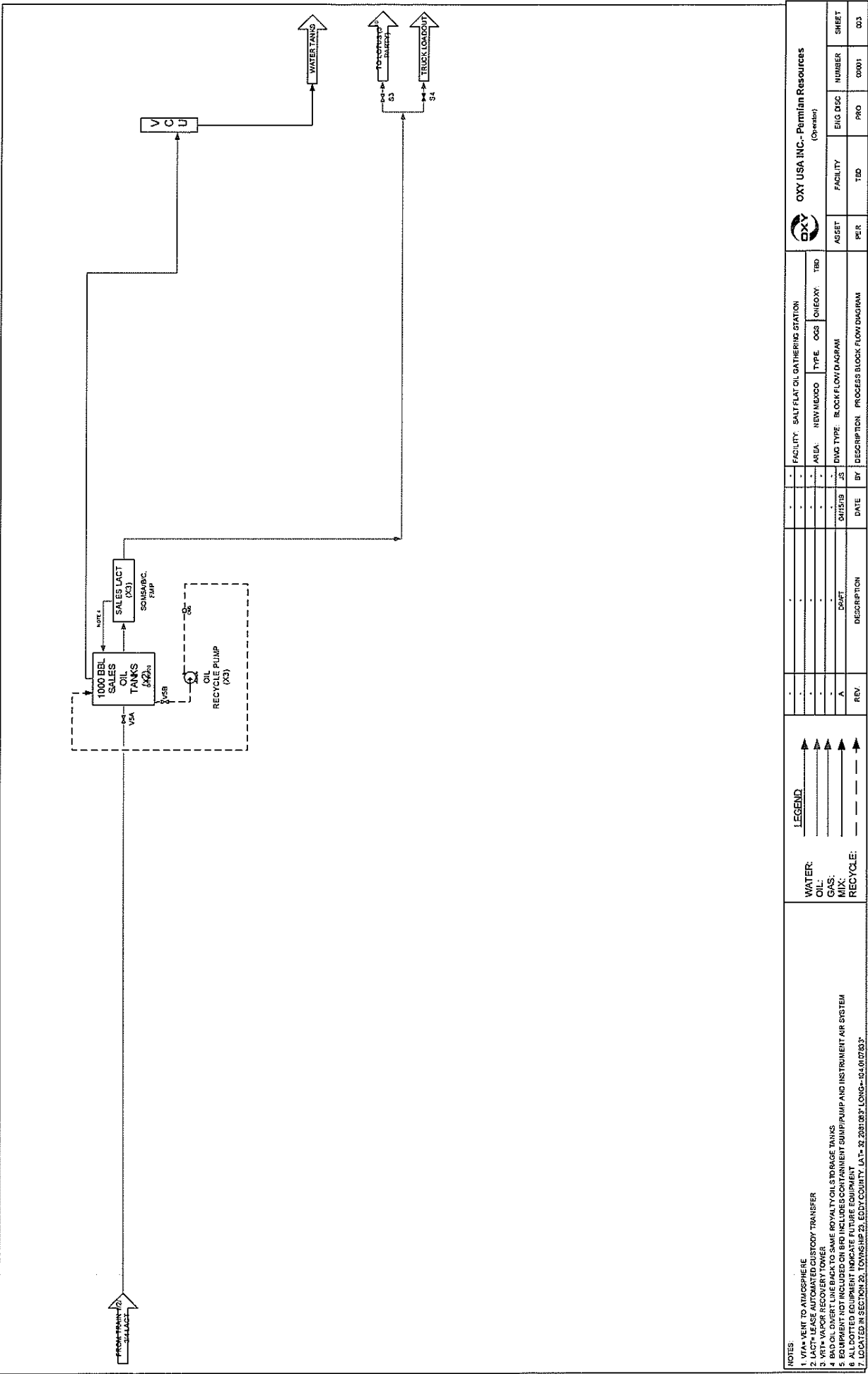
OXY USA INC understands the requested approval will not constitute the granting of any right-of-way or construction rights not granted by the lease instrument.





<div>NOTES:</div> <div>1. VTA= VENT TO ATMOSPHERE</div> <div>2. LACT= LEASE AUTOMATED CUSTODY TRANSFER</div> <div>3. VRT= VAPOR RECOVERY TOWER</div> <div>4. BAD OIL DIVERT LINE BACK TO SAME ROYALTY OILS TO RAGE TANKS</div> <div>5. EQUIPMENT NOT INCLUDED ON BFD INCLUDES CONTAINMENT SUMP/PUMP AND INSTRUMENT AIR SYSTEM</div> <div>6. ALL DOTTED EQUIPMENT INDICATE FUTURE EQUIPMENT</div> <div>7. LOCATION OF FUTURE EQUIPMENT LOCATED IN SECTION 20, TOWNSHIP 23, EDDY COUNTY, LAT: 32.2091083° LONG:-104.017023°</div>	<div>LEGEND</div> <div><div>WATER:</div><div>Oil:</div><div>GAS:</div><div>MIX:</div><div>RECYCLE:</div></div> <div><div>Blue Arrow</div><div>Green Arrow</div><div>Red Arrow</div><div>Black Arrow</div><div>Black Arrow</div></div>									
	OXY USA INC. - Permian Resources (Operator)									
	FACILITY: SALT FLAT CTB		TYPE: CTB		DNG TYPE: BLOCK FLOW DIAGRAM		FACILITY: T2D		ASSET	
	AREA: NW 4E/20S		DNG TYPE: BLOCK FLOW DIAGRAM		DATE: 4/15/19		BY: DESCRIPTION: PROCESS BLOCK FLOW DIAGRAM		PER	
	REV: A		REV: A		REV: A		REV: A		REV: A	
	REV: A		REV: A		REV: A		REV: A		REV: A	
	REV: A		REV: A		REV: A		REV: A		REV: A	
	REV: A		REV: A		REV: A		REV: A		REV: A	
	REV: A		REV: A		REV: A		REV: A		REV: A	
	REV: A		REV: A		REV: A		REV: A		REV: A	





OXY USA INC. - Permian Resources									
(Operator)									
ASSET		FACILITY		PER		TED		PRO 0001	
OXY USA INC. - Permian Resources									
(Operator)									
ASSET		FACILITY		PER		TED		PRO 0001	

OXY USA INC. - Permian Resources									
(Operator)									
ASSET		FACILITY		PER		TED		PRO 0001	
OXY USA INC. - Permian Resources									
(Operator)									
ASSET		FACILITY		PER		TED		PRO 0001	

OXY USA INC. - Permian Resources									
(Operator)									
ASSET		FACILITY		PER		TED		PRO 0001	
OXY USA INC. - Permian Resources									
(Operator)									
ASSET		FACILITY		PER		TED		PRO 0001	

OXY USA INC. - Permian Resources									
(Operator)									
ASSET		FACILITY		PER		TED		PRO 0001	
OXY USA INC. - Permian Resources									
(Operator)									
ASSET		FACILITY		PER		TED		PRO 0001	

OXY USA INC. - Permian Resources									
(Operator)									
ASSET		FACILITY		PER		TED		PRO 0001	
OXY USA INC. - Permian Resources									
(Operator)									
ASSET		FACILITY		PER		TED		PRO 0001	

OXY USA INC. - Permian Resources									
(Operator)									
ASSET		FACILITY		PER		TED		PRO 0001	
OXY USA INC. - Permian Resources									
(Operator)									
ASSET		FACILITY		PER		TED		PRO 0001	

OXY USA INC. - Permian Resources									
(Operator)									
ASSET		FACILITY		PER		TED		PRO 0001	
OXY USA INC. - Permian Resources									
(Operator)									
ASSET		FACILITY		PER		TED		PRO 0001	

OXY USA INC. - Permian Resources									
(Operator)									
ASSET		FACILITY		PER		TED		PRO 0001	
OXY USA INC. - Permian Resources									
(Operator)									
ASSET		FACILITY		PER		TED		PRO 0001	

OXY USA INC. - Permian Resources									
(Operator)									
ASSET		FACILITY		PER		TED		PRO 0001	
OXY USA INC. - Permian Resources									
(Operator)									
ASSET		FACILITY		PER		TED		PRO 0001	

OXY USA INC. - Permian Resources									
(Operator)									
ASSET		FACILITY		PER		TED		PRO 0001	
OXY USA INC. - Permian Resources									
(Operator)									
ASSET		FACILITY		PER		TED		PRO 0001	

OXY USA INC. - Permian Resources									
(Operator)									
ASSET		FACILITY		PER		TED		PRO 0001	
OXY USA INC. - Permian Resources									
(Operator)									
ASSET		FACILITY		PER		TED		PRO 0001	

OXY USA INC. - Permian Resources									
(Operator)									
ASSET		FACILITY		PER		TED		PRO 0001	
OXY USA INC. - Permian Resources									
(Operator)									
ASSET		FACILITY		PER		TED		PRO 0001	

OXY USA INC. - Permian Resources									
(Operator)									
ASSET		FACILITY		PER		TED		PRO 0001	
OXY USA INC. - Permian Resources									
(Operator)									
ASSET		FACILITY		PER		TED		PRO 0001	

OXY USA INC. - Permian Resources									
(Operator)									
ASSET		FACILITY		PER		TED		PRO 0001	
OXY USA INC. - Permian Resources									
(Operator)									
ASSET		FACILITY		PER		TED		PRO 0001	

OXY USA INC. - Permian Resources									
(Operator)									
ASSET		FACILITY		PER		TED		PRO 0001	
OXY USA INC. - Permian Resources									
(Operator)									
ASSET		FACILITY		PER		TED		PRO 0001	

OXY USA INC. - Permian Resources									
(Operator)									
ASSET		FACILITY		PER		TED		PRO 0001	
OXY USA INC. - Permian Resources									
(Operator)									
ASSET		FACILITY		PER		TED		PRO 0001	

OXY USA INC. - Permian Resources									
(Operator)									
ASSET		FACILITY		PER		TED		PRO 0001	
OXY USA INC. - Permian Resources									
(Operator)									
ASSET		FACILITY		PER		TED		PRO 0001	

OXY USA INC. - Permian Resources									
(Operator)									
ASSET		FACILITY		PER		TED		PRO 0001	
OXY USA INC. - Permian Resources									
(Operator)									
ASSET		FACILITY		PER		TED		PRO 0001	

OXY USA INC. - Permian Resources									
(Operator)									
ASSET		FACILITY		PER		TED		PRO 0001	
OXY USA INC. - Permian Resources									
(Operator)									
ASSET		FACILITY		PER		TED		PRO 0001	

OXY USA INC. - Permian Resources									
(Operator)									
ASSET		FACILITY		PER		TED		PRO 0001	
OXY USA INC. - Permian Resources									
(Operator)									
ASSET		FACILITY		PER		TED		PRO 0001	

OXY USA INC. - Permian Resources									
(Operator)									
ASSET		FACILITY		PER		TED		PRO 0001	
OXY USA INC. - Permian Resources									
(Operator)									
ASSET		FACILITY		PER		TED		PRO 0001	

OXY USA INC. - Permian Resources									
(Operator)									
ASSET		FACILITY		PER		TED		PRO 0001	
OXY USA INC. - Permian Resources									
(Operator)									
ASSET		FACILITY		PER		TED		PRO 0001	

OXY USA INC. - Permian Resources									
(Operator)									
ASSET		FACILITY		PER		TED		PRO 0001	
OXY USA INC. - Permian Resources									
(Operator)									
ASSET		FACILITY		PER		TED		PRO 0001	

OXY USA INC. - Permian Resources									
(Operator)									
ASSET		FACILITY		PER		TED		PRO 0001	
OXY USA INC. - Permian Resources									
(Operator)									
ASSET		FACILITY		PER		TED		PRO 0001	

OXY USA INC. - Permian Resources									
(Operator)									
ASSET		FACILITY		PER		TED		PRO 0001	
OXY USA INC. - Permian Resources									
(Operator)									
ASSET		FACILITY		PER		TED		PRO 0001	

OXY USA INC. - Permian Resources									
(Operator)									
ASSET		FACILITY		PER		TED		PRO 0001	
OXY USA INC. - Permian Resources									
(Operator)									
ASSET		FACILITY		PER		TED		PRO 0001	

OXY USA INC. - Permian Resources									
(Operator)									
ASSET		FACILITY		PER		TED		PRO 0001	
OXY USA INC. - Permian Resources									
(Operator)									
ASSET		FACILITY		PER		TED		PRO 0001	

OXY USA INC. - Permian Resources									
(Operator)									
ASSET		FACILITY		PER		TED		PRO 0001	
OXY USA INC. - Permian Resources									
(Operator)									
ASSET		FACILITY		PER		TED		PRO 0001	

OXY USA INC. - Permian Resources									
(Operator)									
ASSET		FACILITY		PER		TED		PRO 0001	
OXY USA INC. - Permian Resources									
(Operator)									
ASSET		FACILITY		PER		TED		PRO 0001	

OXY USA INC. - Permian Resources									
(Operator)									
ASSET		FACILITY		PER		TED		PRO 0001	
OXY USA INC. - Permian Resources									
(Operator)									
ASSET		FACILITY		PER		TED		PRO 0001	

OXY USA INC. - Permian Resources									
(Operator)									
ASSET		FACILITY		PER		TED		PRO 0001	
OXY USA INC. - Permian Resources									
(Operator)									
ASSET		FACILITY		PER		TED		PRO 0001	

OXY USA INC. - Permian Resources									
(Operator)									
ASSET		FACILITY		PER		TED		PRO 0001	
OXY USA INC. - Permian Resources									
(Operator)									
ASSET		FACILITY		PER		TED		PRO 0001	

OXY USA INC. - Permian Resources									
(Operator)									
ASSET		FACILITY		PER		TED		PRO 0001	
OXY USA INC. - Permian Resources									
(Operator)									
ASSET		FACILITY		PER		TED		PRO 0001	

OXY USA INC. - Permian Resources									
(Operator)									
ASSET		FACILITY		PER		TED		PRO 0001	
OXY USA INC. - Permian Resources									
(Operator)									
ASSET		FACILITY		PER		TED		PRO 0001	

OXY USA INC. - Permian Resources									
(Operator)									
ASSET		FACILITY		PER		TED		PRO 0001	
OXY USA INC. - Permian Resources									
(Operator)									
ASSET		FACILITY		PER		TED		PRO 0001	

OXY USA INC. - Permian Resources									
(Operator)									
ASSET		FACILITY		PER		TED		PRO 0001	
OXY USA INC. - Permian Resources									
(Operator)									
ASSET		FACILITY		PER		TED		PRO 0001	

OXY USA INC. - Permian Resources									
(Operator)									
ASSET		FACILITY		PER		TED		PRO 0001	
OXY USA INC. - Permian Resources									
(Operator)									
ASSET		FACILITY		PER		TED		PRO 0001	

OXY USA INC. - Permian Resources									
(Operator)									
ASSET		FACILITY		PER		TED		PRO 0001	
OXY USA INC. - Permian Resources									
(Operator)									
ASSET		FACILITY		PER		TED		PRO 0001	

OXY USA INC. - Permian Resources									
(Operator)									
ASSET		FACILITY		PER		TED		PRO 0001	
OXY USA INC. - Permian Resources									
(Operator)									
ASSET		FACILITY		PER		TED		PRO 0001	

OXY USA INC. - Permian Resources									
(Operator)									
ASSET		FACILITY		PER		TED		PRO 0001	
OXY USA INC. - Permian Resources									
(Operator)									
ASSET		FACILITY		PER		TED		PRO 0001	

OXY USA INC. - Permian Resources									
(Operator)									
ASSET		FACILITY		PER		TED		PRO 0001	
OXY USA INC. - Permian Resources									
(Operator)									
ASSET		FACILITY		PER		TED		PRO 0001	

OXY USA INC. - Permian Resources									
(Operator)									
ASSET		FACILITY		PER		TED		PRO 0001	
OXY USA INC. - Permian Resources									
(Operator)									
ASSET		FACILITY		PER		TED		PRO 0001	

OXY USA INC. - Permian Resources									
(Operator)									
ASSET		FACILITY		PER		TED		PRO 0001	
OXY USA INC. - Permian Resources									
(Operator)									
ASSET		FACILITY		PER		TED		PRO 0001	

OXY USA INC. - Permian Resources									
(Operator)									
ASSET		FACILITY		PER		TED		PRO 0001	
OXY USA INC. - Permian Resources									
(Operator)									
ASSET		FACILITY		PER		TED		PRO 0001	

OXY USA INC. - Permian Resources									
(Operator)									
ASSET		FACILITY		PER		TED		PRO 0001	
OXY USA INC. - Permian Resources									
(Operator)									
ASSET		FACILITY		PER		TED		PRO 0001	

OXY USA INC. - Permian Resources									
(Operator)									
ASSET		FACILITY		PER		TED		PRO 0001	
OXY USA INC. - Permian Resources									
(Operator)									
ASSET		FACILITY		PER		TED		PRO 0001	

OXY USA INC. - Permian Resources									
(Operator)									
ASSET		FACILITY		PER		TED		PRO 0001	
OXY USA INC. - Permian Resources									
(Operator)									
ASSET		FACILITY		PER		TED		PRO 0001	

OXY USA INC. - Permian Resources									
(Operator)									
ASSET		FACILITY		PER		TED		PRO 0001	
OXY USA INC. - Permian Resources									
(Operator)									
ASSET		FACILITY		PER		TED		PRO 0001	

OXY USA INC. - Permian Resources									
(Operator)									
ASSET		FACILITY		PER		TED		PRO 0001	
OXY USA INC. - Permian Resources									
(Operator)									
ASSET		FACILITY		PER		TED		PRO 0001	

OXY USA INC. - Permian Resources									
(Operator)									
ASSET		FACILITY		PER		TED		PRO 0001	
OXY USA INC. - Permian Resources									
(Operator)									
ASSET		FACILITY		PER		TED		PRO 0001	

OXY USA INC. - Permian Resources									
(Operator)									
ASSET		FACILITY		PER		TED		PRO 0001	
OXY USA INC. - Permian Resources									
(Operator)									
ASSET		FACILITY		PER		TED		PRO 0001	

OXY USA INC. - Permian Resources									
(Operator)									
ASSET		FACILITY		PER		TED		PRO 0001	
OXY USA INC. - Permian Resources									
(Operator)									
ASSET		FACILITY		PER		TED		PRO 0001	

OXY USA INC. - Permian Resources									
(Operator)									
ASSET		FACILITY		PER		TED		PRO 0001	
OXY USA INC. - Permian Resources									
(Operator)									
ASSET		FACILITY		PER		TED		PRO 0001	

OXY USA INC. - Permian Resources									
(Operator)									
ASSET		FACILITY		PER		TED		PRO 0001	
OXY USA INC. - Permian Resources									
(Operator)									
ASSET		FACILITY		PER		TED		PRO 0001	

OXY USA INC. - Permian Resources									
(Operator)									
ASSET		FACILITY		PER		TED		PRO 0001	
OXY USA INC. - Permian Resources									
(Operator)									
ASSET		FACILITY		PER		TED		PRO 0001	

OXY USA INC. - Permian Resources									
(Operator)									
ASSET		FACILITY		PER		TED		PRO 0001	
OXY USA INC. - Permian Resources									
(Operator)									
ASSET		FACILITY		PER		TED		PRO 0001	

OXY USA INC. - Permian Resources									
(Operator)									
ASSET		FACILITY		PER		TED		PRO 0001	
OXY USA INC. - Permian Resources									
(Operator)									
ASSET		FACILITY		PER		TED		PRO 0001	

OXY USA INC. - Permian Resources									
(Operator)									
ASSET		FACILITY		PER		TED		PRO 0001	
OXY USA INC. - Permian Resources									
(Operator)									
ASSET		FACILITY		PER		TED		PRO 0001	

OXY USA INC. - Permian Resources									
(Operator)									
ASSET		FACILITY		PER		TED		PRO 0001	
OXY USA INC. - Permian Resources									
(Operator)									
ASSET		FACILITY		PER		TED		PRO 0001	

OXY USA INC. - Permian Resources									
(Operator)									
ASSET		FACILITY		PER		TED		PRO 0001	
OXY USA INC. - Permian Resources									
(Operator)									
ASSET		FACILITY		PER		TED		PRO 0001	

OXY USA INC. - Permian Resources									
(Operator)									
ASSET		FACILITY		PER		TED		PRO 0001	
OXY USA INC. - Permian Resources									
(Operator)									
ASSET		FACILITY		PER		TED		PRO 0001	

OXY USA INC. - Permian Resources									
(Operator)									
ASSET		FACILITY		PER		TED		PRO 0001	
OXY USA INC. - Permian Resources									
(Operator)									
ASSET		FACILITY		PER		TED		PRO 0001	

OXY USA INC. - Permian Resources									
(Operator)									
ASSET		FACILITY		PER		TED		PRO 0001	
OXY USA INC. - Permian Resources									
(Operator)									
ASSET		FACILITY		PER		TED		PRO 0001	

OXY USA INC. - Permian Resources									
(Operator)									
ASSET		FACILITY		PER		TED		PRO 0001	
OXY USA INC. - Permian Resources									
(Operator)									
ASSET		FACILITY		PER		TED		PRO 0001	

OXY USA INC. - Permian Resources									
(Operator)									
ASSET		FACILITY		PER		TED		PRO 0001	
OXY USA INC. - Permian Resources									
(Operator)									
ASSET		FACILITY		PER		TED		PRO 0001	

OXY USA INC. - Permian Resources									
(Operator)</									

Table 1: Well Details			
No.	Train	Well Name	API
1	1	Salt Flat 20/23 Federal Com #033H	30-015-45080
2	1	Salt Flat 20/23 Federal Com #032H	30-015-45081
3	1	Salt Flat 20/23 Federal Com #033H	30-015-45082
4	1	Salt Flat 20/23 Federal Com #033H	30-015-46369
5	2	Salt Flat CC 20/23 Federal Com #034H	30-015-45048
6	2	Salt Flat CC 20/23 Federal Com #035H	30-015-45049
7	2	Salt Flat CC 20/23 Federal Com #036H	30-015-45050
8	2	Salt Flat CC 20/23 Federal Com #033H	30-015-46399
9	3	Dibow CC 17/08 Federal Com #033H	30-015-45083
10	3	Dibow CC 17/08 Federal Com #032H	30-015-45084
11	3	Dibow CC 17/08 Federal Com #037H	30-015-46400
12	3	Dibow CC 17/08 Federal Com #033H	30-015-45085
13	4	Dibow CC 17/08 Federal Com #034H	30-015-45086
14	4	Dibow CC 17/08 Federal Com #038H	30-015-46401
15	4	Dibow CC 17/08 Federal Com #038H	30-015-45088
16	4	Dibow CC 17/08 Federal Com #035H	30-015-45087

Table 2: Valve Details		
Production Phase	Valve ID	Position
V1A	OPEN	V1A
V1B	OPEN	V1B
V2A	OPEN	V2A
V2B	OPEN	V2B
V3A	OPEN	V3A
V3B	OPEN	V3B
V4A	OPEN	V4A
V4B	OPEN	V4B
S1	OPEN	S1
S2	CLOSED	S2
S3	OPEN	S3
S4	CLOSED	S4

Table 3: Meter Details		
Meter ID	Meter S/N	FMP
GM1A	TBD	N
GM1B	TBD	N
GM1C	TBD	N
GM2A	TBD	N
GM2B	TBD	N
GM2C	TBD	N
GM3A	TBD	N
GM3B	TBD	N
GM3C	TBD	N
GM4A	TBD	N
GM4B	TBD	N
GM4C	TBD	N
GM1	TBD	N
GM2	TBD	N
GM3	TBD	N
GM4	TBD	N
GM5	TBD	N
GM6	TBD	N
GM7	TBD	N
GM8	TBD	N
SGM1	TBD	N
SGM1	TBD	N
OM1A	TBD	N
OM1B	TBD	N
OM1C	TBD	N
OM2A	TBD	N
OM2B	TBD	N
OM2C	TBD	N
OM3A	TBD	N
OM3B	TBD	N
OM3C	TBD	N

Table 3: Meter Details (Cont.)		
Meter ID	Meter S/N	FMP
OM4A	TBD	N
OM4B	TBD	N
OM4C	TBD	N
SOM1	TBD	N
SOM2	TBD	N
SOM3	TBD	N
SOM4	TBD	N
WM1A	TBD	N
WM1B	TBD	N
WM1C	TBD	N
WM2A	TBD	N
WM2B	TBD	N
WM2C	TBD	N
WM3A	TBD	N
WM3B	TBD	N
WM3C	TBD	N
WM4A	TBD	N
WM4B	TBD	N
WM4C	TBD	N
WM1	TBD	N
WM2	TBD	N
WM3	TBD	N
WM4	TBD	N
OM5	TBD	N
LM1	TBD	N
LM2	TBD	N
LM3	TBD	N
LM4	TBD	N
LM5	TBD	N
LM6	TBD	N
LM7	TBD	N

Table 4: Oil Tank Details		
Tank ID	Train	S/N
OT1	1	TBD
OT2	1	TBD
OT6	2	TBD
OT7	2	TBD
OT11	3	TBD
OT12	3	TBD
OT16	4	TBD
OT17	4	TBD
OT19	SALES	TBD
OT20	SALES	TBD

Table 5: Well Details		
No.	Train	Well Name
1	1	Salt Flat 20/23 Federal Com #033H
2	1	Salt Flat 20/23 Federal Com #032H
3	1	Salt Flat 20/23 Federal Com #033H
4	1	Salt Flat 20/23 Federal Com #033H
5	2	Salt Flat CC 20/23 Federal Com #034H
6	2	Salt Flat CC 20/23 Federal Com #035H
7	2	Salt Flat CC 20/23 Federal Com #036H
8	2	Salt Flat CC 20/23 Federal Com #033H
9	3	Dibow CC 17/08 Federal Com #033H
10	3	Dibow CC 17/08 Federal Com #032H
11	3	Dibow CC 17/08 Federal Com #037H
12	3	Dibow CC 17/08 Federal Com #033H
13	4	Dibow CC 17/08 Federal Com #034H
14	4	Dibow CC 17/08 Federal Com #038H
15	4	Dibow CC 17/08 Federal Com #038H
16	4	Dibow CC 17/08 Federal Com #035H

Table 6: Valve Details		
Production Phase	Valve ID	Position
V1A	OPEN	V1A
V1B	OPEN	V1B
V2A	OPEN	V2A
V2B	OPEN	V2B
V3A	OPEN	V3A
V3B	OPEN	V3B
V4A	OPEN	V4A
V4B	OPEN	V4B
S1	OPEN	S1
S2	CLOSED	S2
S3	OPEN	S3
S4	CLOSED	S4

Table 7: Meter Details		
Meter ID	Meter S/N	FMP
GM1A	TBD	N
GM1B	TBD	N
GM1C	TBD	N
GM2A	TBD	N
GM2B	TBD	N
GM2C	TBD	N
GM3A	TBD	N
GM3B	TBD	N
GM3C	TBD	N
GM4A	TBD	N
GM4B	TBD	N
GM4C	TBD	N
GM1	TBD	N
GM2	TBD	N
GM3	TBD	N
GM4	TBD	N
GM5	TBD	N
GM6	TBD	N
GM7	TBD	N
GM8	TBD	N
SGM1	TBD	N
SGM1	TBD	N
OM1A	TBD	N
OM1B	TBD	N
OM1C	TBD	N
OM2A	TBD	N
OM2B	TBD	N
OM2C	TBD	N
OM3A	TBD	N
OM3B	TBD	N
OM3C	TBD	N

Table 7: Meter Details (Cont.)		
Meter ID	Meter S/N	FMP
OM4A	TBD	N
OM4B	TBD	N
OM4C	TBD	N
SOM1	TBD	N
SOM2	TBD	N
SOM3	TBD	N
SOM4	TBD	N
WM1A	TBD	N
WM1B	TBD	N
WM1C	TBD	N
WM2A	TBD	N
WM2B	TBD	N
WM2C	TBD	N
WM3A	TBD	N
WM3B	TBD	N
WM3C	TBD	N
WM4A	TBD	N
WM4B	TBD	N
WM4C	TBD	N
WM1	TBD	N
WM2	TBD	N
WM3	TBD	N
WM4	TBD	N
OM5	TBD	N
LM1	TBD	N
LM2	TBD	N
LM3	TBD	N
LM4	TBD	N
LM5	TBD	N
LM6	TBD	N
LM7	TBD	N

Table 8: Meter Details (Cont.)		
Meter ID	Meter S/N	FMP
OM1A	TBD	N
OM1B	TBD	N
OM1C	TBD	N
OM2A	TBD	N
OM2B	TBD	N
OM2C	TBD	N
OM3A	TBD	N
OM3B	TBD	N
OM3C	TBD	N

Table 8: Meter Details (Cont.)		
Meter ID	Meter S/N	FMP
OM1A	TBD	N
OM1B	TBD	N
OM1C	TBD	N
OM2A	TBD	N
OM2B	TBD	N
OM2C	TBD	N
OM3A	TBD	N
OM3B	TBD	N
OM3C	TBD	N

Table 9: Meter Details (Cont.)		
Meter ID	Meter S/N	FMP
OM1A	TBD	N
OM1B	TBD	N
OM1C	TBD	N
OM2A	TBD	N
OM2B	TBD	N
OM2C	TBD	N
OM3A	TBD	N
OM3B	TBD	N
OM3C	TBD	N

Table 9: Meter Details (Cont.)		
Meter ID	Meter S/N	FMP
OM1A	TBD	N
OM1B	TBD	N
OM1C	TBD	N
OM2A	TBD	N
OM2B	TBD	N
OM2C	TBD	N
OM3A	TBD	N
OM3B	TBD	N
OM3C	TBD	N

Table 10: Meter Details (Cont.)		
Meter ID	Meter S/N	FMP
OM1A	TBD	N
OM1B	TBD	N
OM1C	TBD	N
OM2A	TBD	N
OM2B	TBD	N
OM2C	TBD	N
OM3A	TBD	N
OM3B	TBD	N
OM3C	TBD	N

Table 10: Meter Details (Cont.)		
Meter ID	Meter S/N	FMP
OM1A	TBD	N
OM1B	TBD	N
OM1C	TBD	N
OM2A	TBD	N
OM2B	TBD	N
OM2C	TBD	N
OM3A	TBD	N
OM3B	TBD	N
OM3C	TBD	N

Table 11: Meter Details (Cont.)		
Meter ID	Meter S/N	FMP
OM1A	TBD	N
OM1B	TBD	N
OM1C	TBD	N
OM2A	TBD	N
OM2B	TBD	N
OM2C	TBD	N
OM3A	TBD	N
OM3B	TBD	N
OM3C	TBD	N

Table 11: Meter Details (Cont.)		
Meter ID	Meter S/N	FMP
OM1A	TBD	N
OM1B	TBD	N
OM1C	TBD	N
OM2A	TBD	N
OM2B	TBD	N
OM2C	TBD	N
OM3A	TBD	N
OM3B	TBD	N
OM3C	TBD	N

Table 12: Meter Details (Cont.)		
Meter ID	Meter S/N	FMP
OM1A	TBD	N
OM1B	TBD	N
OM1C	TBD	N
OM2A	TBD	N
OM2B	TBD	N
OM2C	TBD	N
OM3A	TBD	N
OM3B	TBD	N
OM3C	TBD	N

Table 12: Meter Details (Cont.)		
Meter ID	Meter S/N	FMP
OM1A	TBD	N
OM1B	TBD	N
OM1C	TBD	N
OM2A	TBD	N
OM2B	TBD	N
OM2C	TBD	N
OM3A	TBD	N
OM3B	TBD	N
OM3C	TBD	N

Table 13: Meter Details (Cont.)		
Meter ID	Meter S/N	FMP
OM1A	TBD	N
OM1B	TBD	N
OM1C	TBD	N
OM2A	TBD	N
OM2B	TBD	N
OM2C	TBD	N
OM3A	TBD	N
OM3B	TBD	N
OM3C	TBD	N

Table 13: Meter Details (Cont.)		
Meter ID	Meter S/N	FMP
OM1A	TBD	N
OM1B	TBD	N
OM1C	TBD	N
OM2A	TBD	N
OM2B	TBD	N
OM2C	TBD	N
OM3A	TBD	N
OM3B	TBD	N
OM3C	TBD	N

Table 14: Meter Details (Cont.)		
Meter ID	Meter S/N	FMP
OM1A	TBD	N
OM1B	TBD	N
OM1C	TBD	N
OM2A	TBD	N
OM2B	TBD	N
OM2C	TBD	N
OM3A	TBD	N
OM3B	TBD	N
OM3C	TBD	N

Table 14: Meter Details (Cont.)		
Meter ID	Meter S/N	FMP
OM1A	TBD	N
OM1B	TBD	N
OM1C	TBD	N
OM2A	TBD	N
OM2B	TBD	N
OM2C	TBD	N
OM3A	TBD	N
OM3B	TBD	N
OM3C	TBD	N

Table 15: Meter Details (Cont.)		
Meter ID	Meter S/N	FMP
OM1A	TBD	N
OM1B	TBD	N
OM1C	TBD	N
OM2A	TBD	N
OM2B	TBD	N
OM2C	TBD	N
OM3A	TBD	N
OM3B	TBD	N
OM3C	TBD	N

Table 15: Meter Details (Cont.)		
Meter ID	Meter S/N	FMP
OM1A	TBD	N
OM1B	TBD	N
OM1C	TBD	N
OM2A	TBD	N
OM2B	TBD	N
OM2C	TBD	N
OM3A	TBD	N
OM3B	TBD	N
OM3C	TBD	N

Table 16: Meter Details (Cont.)		
Meter ID	Meter S/N	FMP
OM1A	TBD	N
OM1B	TBD	N
OM1C	TBD	N
OM2A	TBD	N
OM2B	TBD	N
OM2C	TBD	N
OM3A	TBD	N
OM3B	TBD	N
OM3C	TBD	N

Table 16: Meter Details (Cont.)		
Meter ID	Meter S/N	FMP
OM1A	TBD	N
OM1B	TBD	N
OM1C	TBD	N
OM2A	TBD	N
OM2B	TBD	N
OM2C	TBD	N
OM3A	TBD	N
OM3B	TBD	N
OM3C	TBD	N

Table 17: Meter Details (Cont.)		
Meter ID	Meter S/N	FMP
OM1A	TBD	N
OM1B	TBD	N
OM1C	TBD	N
OM2A	TBD	N
OM2B	TBD	N
OM2C	TBD	N
OM3A	TBD	N
OM3B	TBD	N
OM3C	TBD	N

Table 17: Meter Details (Cont.)		
Meter ID	Meter S/N	FMP
OM1A	TBD	N
OM1B	TBD	N
OM1C	TBD	N
OM2A	TBD	N
OM2B	TBD	N
OM2C	TBD	N
OM3A	TBD	N
OM3B	TBD	N
OM3C	TBD	N

Table 18: Meter Details (Cont.)		
---------------------------------	--	--



OXY USA INC
A subsidiary of Occidental Petroleum Corporation

5 Greenway Plaza, Suite 110, Houston, Texas 77046
P.O. Box 4294, Houston, Texas 77210-4294
Direct: 713.366.5109
Kathleen_Mowery@oxy.com

December 5, 2019

CERTIFIED MAIL
RETURN RECEIPT REQUESTED

To Whom It May Concern:

This is to advise you that OXY USA INC is filing an Off Lease Measurement application with the New Mexico Oil Conservation Division and Bureau of Land Management for the following wells:

- Oxbow CC 17 08 Federal Com #031H
- Oxbow CC 17 08 Federal Com #032H
- Oxbow CC 17 08 Federal Com #037H
- Oxbow CC 17 08 Federal Com #033H

A copy of the application is enclosed for your review.

Pursuant to NMAC 19.15.23.9, interested parties must file objections or requests for hearing in writing with the New Mexico Oil Conservation Division office within 20 days after notice, or the Commission may approve the application.

For questions pertaining to the application, please contact Kathleen Mowery at (713) 366-5109.

Respectfully,

A handwritten signature in black ink that reads "Kathleen Mowery".

OXY USA INC
Kathleen Mowery
Permian Regulatory
(713) 366-5109
Kathleen_Mowery@oxy.com

Off-lease storage, measurement, and sales notification list - Salt Flat Train #3

ToName	DeliveryAddress	City	State	Zip	MailDate	TrackingNo
MW Petroleum Corporation	303 Veterans Airpark Lane Suite 1000	Midland	TX	79705	12/05/2019	9414810898765049479333
DRW Energy, LLC	400 W. Illinois, Suite 970	Midland	TX	79701	12/05/2019	9414810898765049479319
Beryl Oil and Gas, LP	P. O. Box 51440	Midland	TX	79710	12/05/2019	9414810898765049479326
Leopard Petroleum LP	P. O. Box 51440	Midland	TX	79710	12/05/2019	9414810898765049479289
Melissa L. McKinney Schoening	301 Sir Barton Parkway	Midland	TX	79705	12/05/2019	9414810898765049479296
EOG A, M, & Y Resources, Inc.	5509 Champions Drive	Midland	TX	79706	12/05/2019	9414810898765049479265
B. Jack Reed	506 Charismatic	Midland	TX	79705	12/05/2019	9414810898765049479272
GD McKinney Investments LP	300 N Mariefeld Ste1100	Midland	TX	79701	12/05/2019	9414810898765049479241

RECEIVED

JUN 28 2018

Office:
 1000 N. Main St., Suite 100, Santa Fe, NM 87501
 Phone: (505) 827-4000 Fax: (505) 827-4001
 Office:
 1000 N. Main St., Suite 100, Santa Fe, NM 87501
 Phone: (505) 827-4000 Fax: (505) 827-4001
 Office:
 1000 N. Main St., Suite 100, Santa Fe, NM 87501
 Phone: (505) 827-4000 Fax: (505) 827-4001
 Office:
 1000 N. Main St., Suite 100, Santa Fe, NM 87501
 Phone: (505) 827-4000 Fax: (505) 827-4001

State of New Mexico
 Energy, Minerals & Natural Resources Department
OIL CONSERVATION DIVISION
 1220 South St. Francis Dr.
 Santa Fe, NM 87505

DISTRICT II-ARTESIA O.C.D.

Form C-102

Revised August 1, 2011

Submit one copy to appropriate
 District Office

☐ AMENDED REPORT**WELL LOCATION AND ACREAGE DEDICATION PLAT**

API Number 30-015-45083	Pool Code 19220	Pool Name Purple Sage-Wolfcamp Pool
Property Code 321633	Property Name OXBOW CC "17-8" FEDERAL COM	Well Number 31H
OCGRID No. 106916	Operator Name OXY USA INC.	Elevation 2938.7'

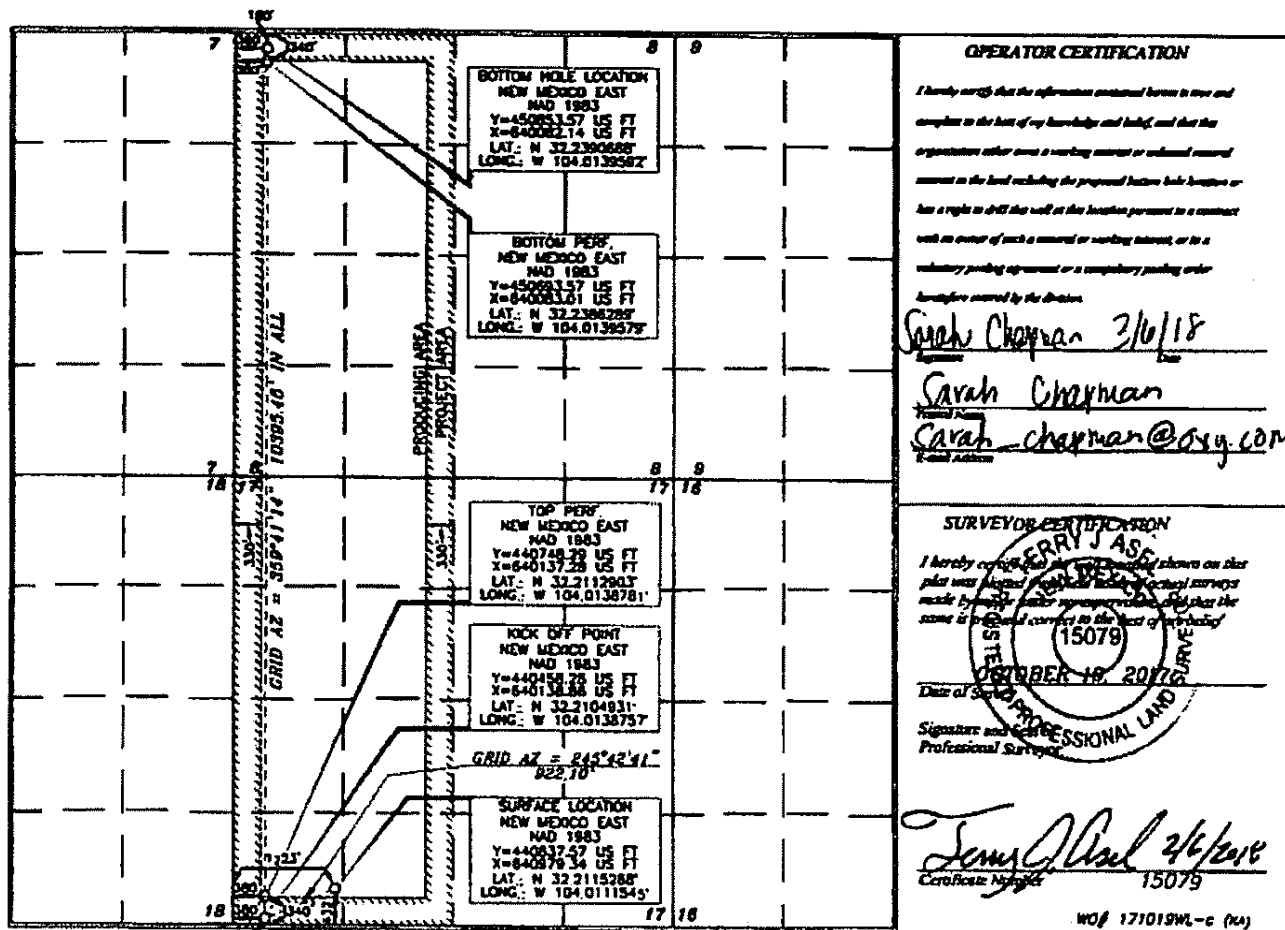
Surface Location

UL or lot no.	Section	Township	Range	Lot No.	Feet from the	North/South line	Feet from the	East/West line	County
M	17	24 SOUTH	29 EAST, N.M.P.M.		432'	SOUTH	1223'	WEST	EDDY

Bottom Hole Location If Different From Surface

UL or lot no.	Section	Township	Range	Lot No.	Feet from the	North/South line	Feet from the	East/West line	County
D	8	24 SOUTH	29 EAST, N.M.P.M.		180'	NORTH	380'	WEST	EDDY
Dedicated Acres 640	Joint or Infill Y	Consolidation Code	Order No.						

No allowable will be assigned to this completion until all interests have been consolidated or a non-standard unit has been approved by the division.

**OPERATOR CERTIFICATION**

I hereby certify that the information contained herein is true and complete to the best of my knowledge and belief, and that the organization either owns a working interest or undivided mineral interest in the land including the proposed bottom hole location or has a right to drill this well at the location pursuant to a contract with an owner of such a mineral or working interest, or to a voluntary pooling agreement or a compulsory pooling order heretofore entered by the Division.

Sarah Chapman 3/6/18
 Signature

Sarah Chapman
 Printed Name

Sarah_chapman@oxy.com
 E-mail Address

SURVEYOR CERTIFICATION

I hereby certify that the information shown on this plat was prepared by the Surveyor or from actual surveys made by the Surveyor under supervision and that the same is true and correct to the best of my knowledge.

15079
 Date of Survey

October 18, 2017
 Signature and Seal of Professional Surveyor

Tommy D. Paul 2/6/2018
 Certificate Number 15079

WO# 171019ML-C (NA)

RWP 7-3-18

RECEIVED

JUN 28 2018

District II
 1220 South St. Francis Dr., Santa Fe, NM 87505
 Phone: (505) 426-4200 Fax: (505) 426-4201
 District II
 1220 South St. Francis Dr., Santa Fe, NM 87505
 Phone: (505) 426-4200 Fax: (505) 426-4201
 District II
 1220 South St. Francis Dr., Santa Fe, NM 87505
 Phone: (505) 426-4200 Fax: (505) 426-4201
 District II
 1220 South St. Francis Dr., Santa Fe, NM 87505
 Phone: (505) 426-4200 Fax: (505) 426-4201

State of New Mexico
 Energy, Minerals & Natural Resources Department
 OIL CONSERVATION DIVISION
 1220 South St. Francis Dr.
 Santa Fe, NM 87505

Form C-102
 District II-ARTESIA O.C.D.
 Revised August 1, 2011
 Submit one copy to appropriate
 District Office

☐ AMENDED REPORT

WELL LOCATION AND ACREAGE DEDICATION PLAT

API Number 30-016 45084	Pool Code 98220	Pool Name Yunque-Sage Wolfcamp
Property Code 321633	Property Name OXBOW CC "17-8" FEDERAL COM	Well Number 32H
OGRIID No. 16616	Operator Name OXY USA INC.	Elevation 2938.2'

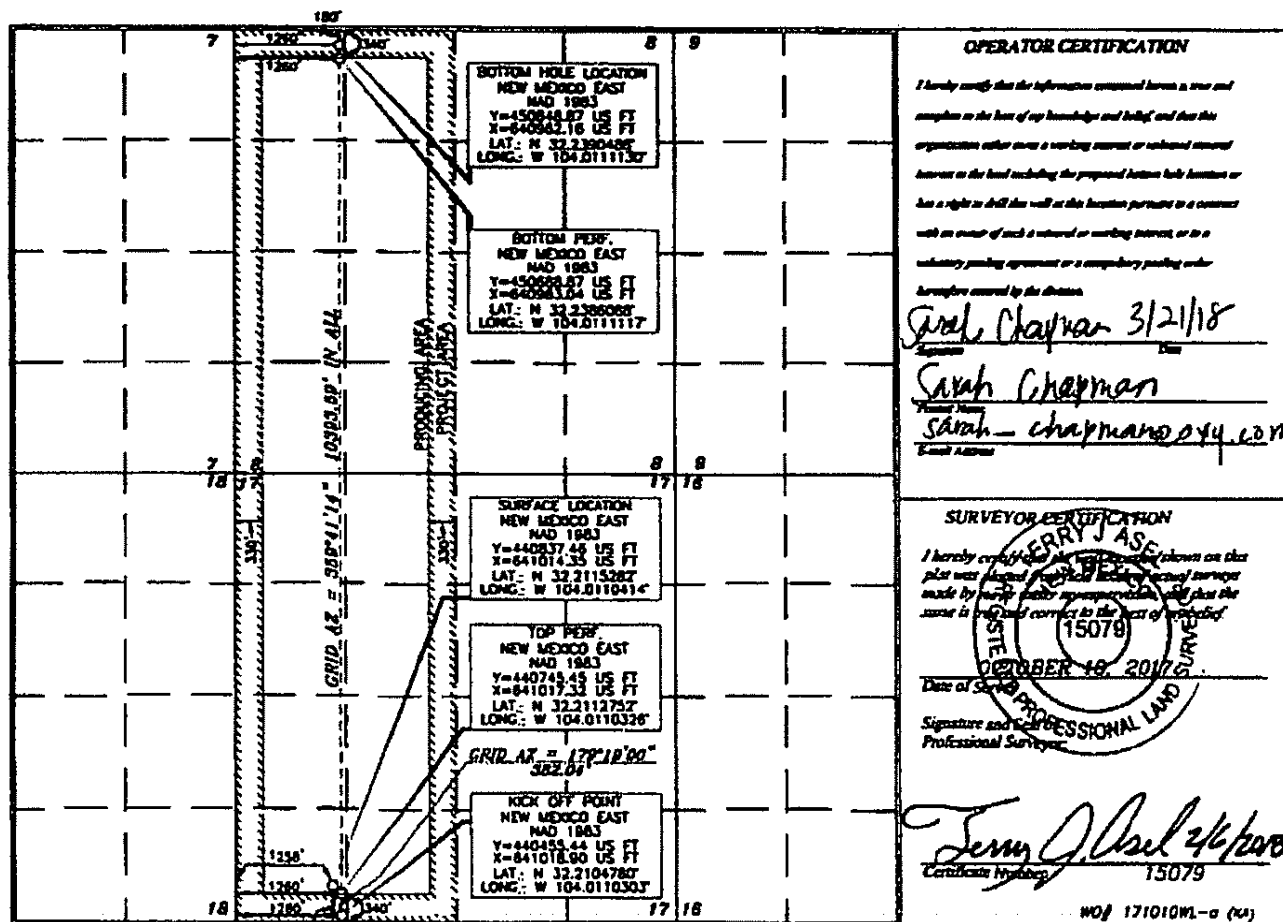
Surface Location

UL or lot no.	Section	Township	Range	Lot No.	Feet from the	North/South line	Feet from the	East/West line	County
M	17	24 SOUTH	29 EAST, N.M.P.M.		432'	SOUTH	1258'	WEST	EDDY

Bottom Hole Location If Different From Surface

UL or lot no.	Section	Township	Range	Lot No.	Feet from the	North/South line	Feet from the	East/West line	County
D	8	24 SOUTH	29 EAST, N.M.P.M.		180'	NORTH	1260'	WEST	EDDY
Dedicated Acres 640		Joint or Infill Y	Consolidation Code	Order No.					

No allowable will be assigned to this completion until all interests have been consolidated or a non-standard unit has been approved by the division.



RWP 7-3-18

District I
1625 N. French Dr., Hobbs, NM 88240
Phone: (575) 393-6161 Fax: (575) 393-0720
District II
811 S. First St., Artesia, NM 88210
Phone: (575) 748-1283 Fax: (575) 748-9720
District III
1000 Rio Bravos Road, Aztec, NM 87410
Phone: (505) 334-6178 Fax: (505) 334-6170
District IV
1220 S. St. Francis Dr., Santa Fe, NM 87505
Phone: (505) 476-3460 Fax: (505) 476-3462

State of New Mexico
Energy, Minerals & Natural Resources Department
OIL CONSERVATION DIVISION
1220 South St. Francis Dr.
Santa Fe, NM 87505

Form C-102
Revised August 1, 2011
Submit one copy to appropriate
District Office

☒ AMENDED REPORT

WELL LOCATION AND ACREAGE DEDICATION PLAT

API Number 30-015-45085	Pool Code 50371	Pool Name Pierce Crossing Bone Spring
Property Code	Property Name OXBOW CC "17-8" FEDERAL COM	Well Number 33H
OGRID No. 16694	Operator Name OXY USA INC.	Elevation 2937.9'

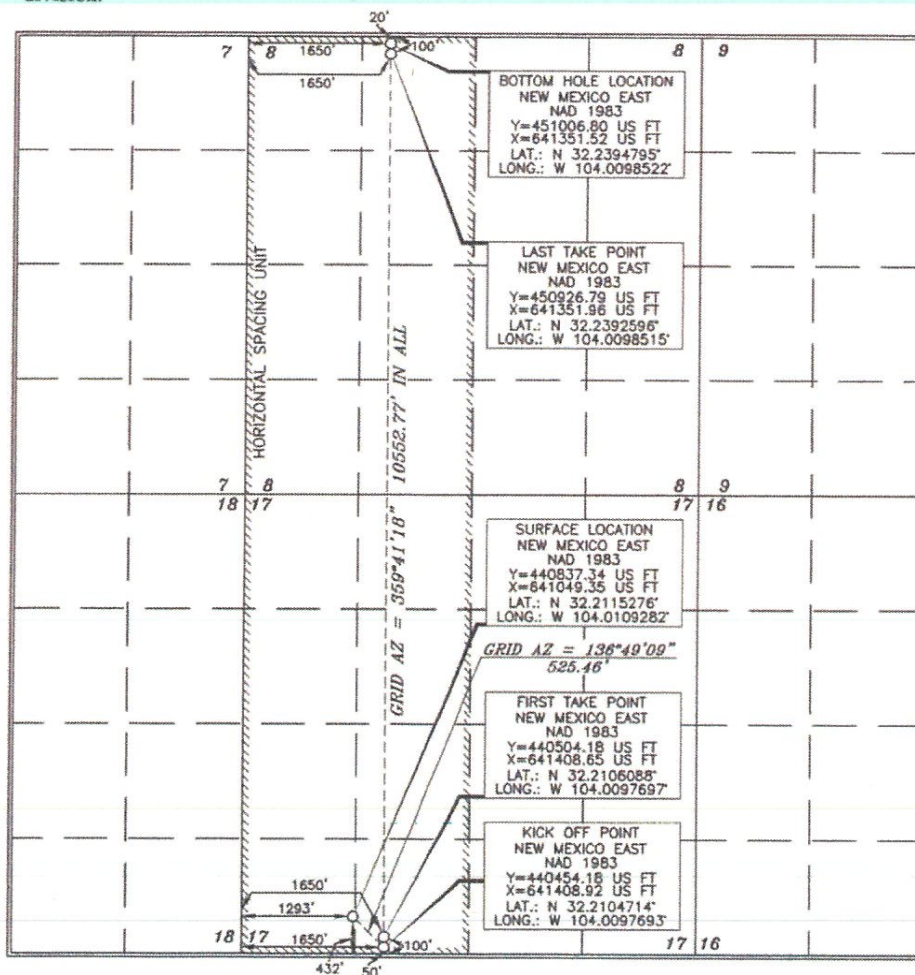
Surface Location

UL or lot no.	Section	Township	Range	Lot Idn	Feet from the	North/South line	Feet from the	East/West line	County
M	17	24 SOUTH	29 EAST, N.M.P.M.		432'	SOUTH	1293'	WEST	EDDY

Bottom Hole Location If Different From Surface

UL or lot no.	Section	Township	Range	Lot Idn	Feet from the	North/South line	Feet from the	East/West line	County
C	8	24 SOUTH	29 EAST, N.M.P.M.		20'	NORTH	1650'	WEST	EDDY
Dedicated Acres 6.40	Joint or Infill	Consolidation Code	Order No.						

No allowable will be assigned to this completion until all interests have been consolidated or a non-standard unit has been approved by the division.



OPERATOR CERTIFICATION

I hereby certify that the information contained herein is true and complete to the best of my knowledge and belief, and that this organization either owns a working interest or unleased mineral interest in the land including the proposed bottom hole location or has a right to drill this well at this location pursuant to a contract with an owner of such a mineral or working interest, or to a voluntary pooling agreement or a compulsory pooling order heretofore entered by the division.

Sarah Chapman 6/12/19
Signature Date
Sarah Chapman
Printed Name
sarah.chapman@oxy.com
E-mail Address

SURVEYOR CERTIFICATION

I hereby certify that the well location shown on this plat was plotted from the actual surveys made by me or under my supervision, and that the same is true and correct to the best of my belief.

TERRY J. ASH
15079
OCTOBER 19, 2017
Date of Survey
Signature and Seal
Professional Surveyor

Terry J. Ash 5/3/2019
Certificate Number 15079

Intent ☒ As Drilled ☐

API # 30-015-45085		
Operator Name: OXY USA Inc.	Property Name: OXBOW CC 17-8 Federal Com	Well Number 33H

Kick Off Point (KOP)

UL N	Section 17	Township 24S	Range 29E	Lot	Feet 50	From N/S South	Feet 1650	From E/W West	County Eddy
Latitude 32.2104714					Longitude -104.0097693			NAD NAD83	

First Take Point (FTP)

UL N	Section 17	Township 24S	Range 29E	Lot	Feet 100	From N/S South	Feet 1650	From E/W West	County Eddy
Latitude 32.2106888					Longitude -104.0097697			NAD NAD83	

Last Take Point (LTP)

UL C	Section 8	Township 24S	Range 29E	Lot	Feet 100	From N/S North	Feet 1650	From E/W West	County Eddy
Latitude 32.2392596					Longitude -104.0098515			NAD NAD83	

Is this well the defining well for the Horizontal Spacing Unit? ☒Is this well an infill well? ☐

If infill is yes please provide API if available, Operator Name and well number for Defining well for Horizontal Spacing Unit.

API #		
Operator Name:	Property Name:	Well Number

KZ 06/29/2018

NM OIL CONSERVATION
ARTESIA DISTRICT

OCT 16 2019

Form C-102

Revised August 1, 2011

Submit one copy to appropriate

District Office

RECEIVED

☒ AMENDED REPORT

District I
 1625 N. French Dr., Hobbs, NM 88240
 Phone: (505) 393-6161 Fax: (505) 393-0720
 District II
 811 E. First St., Artesia, NM 88210
 Phone: (505) 748-1283 Fax: (505) 748-9720
 District III
 1000 Rio Brazos Road, Aztec, NM 87410
 Phone: (505) 234-6178 Fax: (505) 234-6170
 District IV
 1220 S. St. Francis Dr., Santa Fe, NM 87505
 Phone: (505) 476-3450 Fax: (505) 476-3452

State of New Mexico
 Energy, Minerals & Natural Resources Department
 OIL CONSERVATION DIVISION
 1220 South St. Francis Dr.
 Santa Fe, NM 87505

WELL LOCATION AND ACREAGE DEDICATION PLAT

API Number 30-015-46400	Pool Code 98220	Pool Name Purple Sage Wolfcamp
Property Code 321633	Property Name OXBOW CC "17-8" FEDERAL COM	Well Number 37H
OGRID No. 16694	Operator Name OXY USA INC.	Elevation 2936.1'

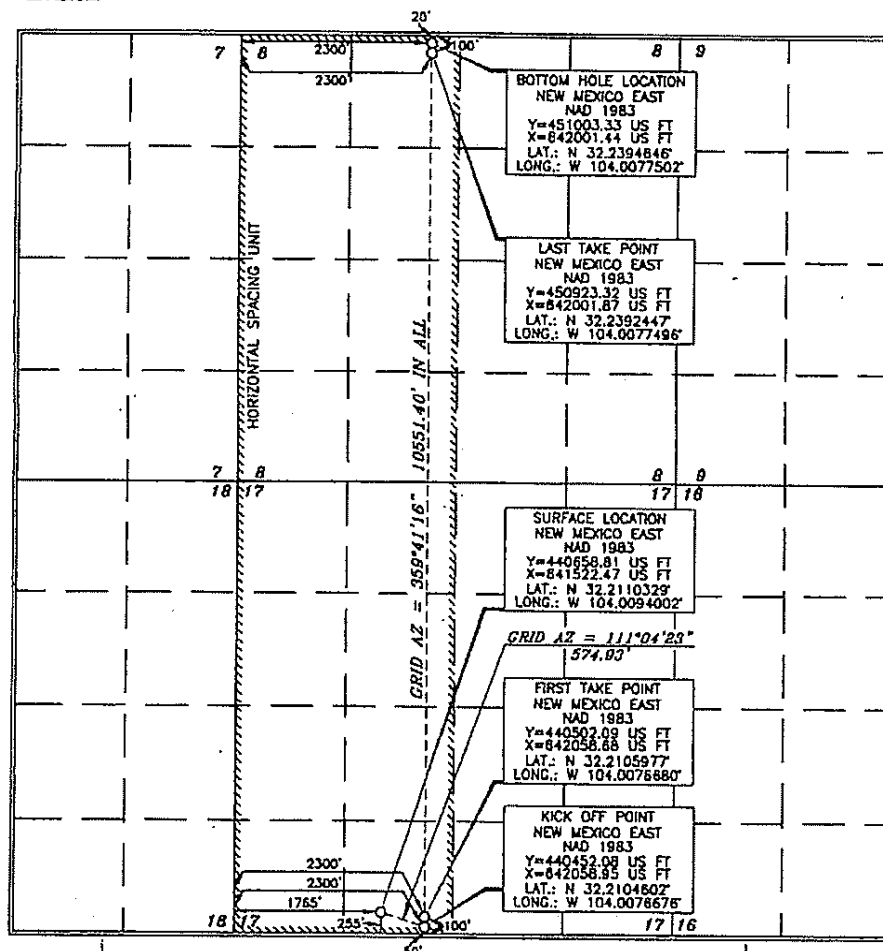
Surface Location

UL or lot no.	Section	Township	Range	Lot Ida	Feet from the	North/South line	Feet from the	East/West line	County
N	17	24 SOUTH	29 EAST, N.M.P.M.		255'	SOUTH	1765'	WEST	EDDY

Bottom Hole Location If Different From Surface

UL or lot no.	Section	Township	Range	Lot Ida	Feet from the	North/South line	Feet from the	East/West line	County
C	8	24 SOUTH	29 EAST, N.M.P.M.		20'	NORTH	2300'	WEST	EDDY
Dedicated Acres 640	Joint or Infill Y	Consolidation Code	Order No.						

No allowable will be assigned to this completion until all interests have been consolidated or a non-standard unit has been approved by the division.



OPERATOR CERTIFICATION

I hereby certify that the information contained herein is true and complete to the best of my knowledge and belief, and that this organization either owns a working interest or unleased mineral interest in the land including the proposed bottom hole location or has a right to drill this well at this location pursuant to a contract with an owner of such a mineral or working interest, or to a voluntary pooling agreement or a compulsory pooling order.

Authorized by the division

Signature: *David Stewart* Date: 10/31/19

Printed Name: David Stewart

E-mail Address: david.stewart@oxy.com

SURVEYOR CERTIFICATION

I hereby certify that the information contained herein is true and complete to the best of my knowledge and belief, and that this organization either owns a working interest or unleased mineral interest in the land including the proposed bottom hole location or has a right to drill this well at this location pursuant to a contract with an owner of such a mineral or working interest, or to a voluntary pooling agreement or a compulsory pooling order.

Signature and Seal: *ERRY J. AS* Date of Survey: DECEMBER 4, 2018

Professional Surveyor: *ERRY J. AS* Certificate Number: 15079

WOP 181204WL-c (Rev. C) (KA)

RPT 10-19-19 NSL Required