

URX34-191205-C-107B 1379

Revised March 23, 2017

RECEIVED: 12/5/19	REVIEWER:	TYPE: PC	APP NO: pDM2000760970
-------------------	-----------	----------	-----------------------

ABOVE THIS TABLE FOR OCD DIVISION USE ONLY

NEW MEXICO OIL CONSERVATION DIVISION
 - Geological & Engineering Bureau -
 1220 South St. Francis Drive, Santa Fe, NM 87505

**ADMINISTRATIVE APPLICATION CHECKLIST**

THIS CHECKLIST IS MANDATORY FOR ALL ADMINISTRATIVE APPLICATIONS FOR EXCEPTIONS TO DIVISION RULES AND REGULATIONS WHICH REQUIRE PROCESSING AT THE DIVISION LEVEL IN SANTA FE

Applicant: OXY USA INC **OGRID Number:** 16696 74
Well Name: OXBOW CC 17 08 FEDERAL COM #034H & MULTIPLE **API:** 30-015-45086 & MULTIPLE
Pool: PURPLE SAGE; WOLFCAMP & PIERCE CROSSING; BONE SPRING **Pool Code:** 98220 & 50371

SUBMIT ACCURATE AND COMPLETE INFORMATION REQUIRED TO PROCESS THE TYPE OF APPLICATION INDICATED BELOW

1) TYPE OF APPLICATION: Check those which apply for (A)

A. Location - Spacing Unit - Simultaneous Dedication

☐ NSL

☐ NSP (PROJECT AREA)

☐ NSP (PRORATION UNIT)

☐ SD

B. Check one only for (I) or (II)

(I) Commingling - Storage - Measurement

☐ DHC

☐ CTB

☐ PLC

☒ PC

☐ OLS

☐ OLM

(II) Injection - Disposal - Pressure Increase - Enhanced Oil Recovery

☐ WFX

☐ PMX

☐ SWD

☐ IPI

☐ EOR

☐ PPR

2) NOTIFICATION REQUIRED TO: Check those which apply.

A. ☒ Offset operators or lease holders *w/o were notified for OLM.*

B. ☐ Royalty, overriding royalty owners, revenue owners

C. ☐ Application requires published notice

D. ☐ Notification and/or concurrent approval by SLO

E. ☒ Notification and/or concurrent approval by BLM

F. ☐ Surface owner

G. ☐ For all of the above, proof of notification or publication is attached, and/or,

H. ☐ No notice required

FOR OCD ONLY

☐ Notice Complete

☐ Application
Content
Complete

3) CERTIFICATION: I hereby certify that the information submitted with this application for administrative approval is **accurate** and **complete** to the best of my knowledge. I also understand that **no action** will be taken on this application until the required information and notifications are submitted to the Division.

Note: Statement must be completed by an individual with managerial and/or supervisory capacity.

Kathleen Mowery

Print or Type Name

Date

12-5-19

713-346-5109

Phone Number

Kathleen Mowery

Signature

Kathleen-Mowery@oxy.com

e-mail Address

Submit 1 Copy To Appropriate District Office
 District I – (575) 393-6161
 1625 N. French Dr., Hobbs, NM 88240
 District II – (575) 748-1283
 811 S. First St., Artesia, NM 88210
 District III – (505) 334-6178
 1000 Rio Brazos Rd., Aztec, NM 87410
 District IV – (505) 476-3460
 1220 S. St. Francis Dr., Santa Fe, NM 87505

State of New Mexico
 Energy, Minerals and Natural Resources

OIL CONSERVATION DIVISION
 1220 South St. Francis Dr.
 Santa Fe, NM 87505

Form C-103
 Revised July 18, 2013

SUNDRY NOTICES AND REPORTS ON WELLS (DO NOT USE THIS FORM FOR PROPOSALS TO DRILL OR TO DEEPEN OR PLUG BACK TO A DIFFERENT RESERVOIR. USE "APPLICATION FOR PERMIT" (FORM C-101) FOR SUCH PROPOSALS.)		WELL API NO. 30-015-45086
1. Type of Well: Oil Well <input checked="" type="checkbox"/> Gas Well <input type="checkbox"/> Other <input type="checkbox"/>		5. Indicate Type of Lease STATE <input type="checkbox"/> FEE <input type="checkbox"/>
2. Name of Operator OXY USA INC		6. State Oil & Gas Lease No.
3. Address of Operator 5 GREENWAY PLAZA SUITE 110, HOUSTON, TX, 77046		7. Lease Name or Unit Agreement Name OXBOW CC 17 08 FEDERAL COM
4. Well Location Unit Letter <u>P</u> : <u>601</u> feet from the <u>SOUTH</u> line and <u>1271</u> feet from the <u>EAST</u> line Section <u>17</u> Township <u>24S</u> Range <u>29E</u> NMPM County <u>EDDY</u>		8. Well Number #034H
11. Elevation (Show whether DR, RKB, RT, GR, etc.)		9. OGRID Number 16696
10. Pool name or Wildcat PURPLE SAGE; WOLFCAMP		

12. Check Appropriate Box to Indicate Nature of Notice, Report or Other Data

NOTICE OF INTENTION TO:

PERFORM REMEDIAL WORK ☐ PLUG AND ABANDON ☐
 TEMPORARILY ABANDON ☐ CHANGE PLANS ☐
 PULL OR ALTER CASING ☐ MULTIPLE COMPL ☐
 DOWNHOLE COMMINGLE ☐
 CLOSED-LOOP SYSTEM ☐
 OTHER: POOL COMMINGLE & OFF-LEASE MEASUREMENT ☒

SUBSEQUENT REPORT OF:

REMEDIAL WORK ☐ ALTERING CASING ☐
 COMMENCE DRILLING OPNS. ☐ P AND A ☐
 CASING/CEMENT JOB ☐
 OTHER: ☐

13. Describe proposed or completed operations. (Clearly state all pertinent details, and give pertinent dates, including estimated date of starting any proposed work). SEE RULE 19.15.7.14 NMAC. For Multiple Completions: Attach wellbore diagram of proposed completion or recompletion.

OXY USA INC requests approval of a surface pool commingle and off-lease storage, measurement and sales for Train #4 at the Salt Flat CTB (C-20-24S-29E) for the wells listed below and future wells within the same pools and leases. Wells with identical CA boundaries will flow to the same facility train. Production from the trains will be kept separate and not commingled. Detailed information is attached.

Well Name	API	Pool
Oxbow CC 17 08 Federal Com #034H	30-015-45086	PURPLE SAGE; WOLFCAMP
Oxbow CC 17 08 Federal Com #038H	30-015-46401	PURPLE SAGE; WOLFCAMP
Oxbow CC 17 08 Federal Com #036H	30-015-45088	PURPLE SAGE; WOLFCAMP
Oxbow CC 17 08 Federal Com #035H	30-015-45087	PIERCE CROSSING; BONE SPRING

Spud Date: Rig Release Date:

I hereby certify that the information above is true and complete to the best of my knowledge and belief.

SIGNATURE Kathleen Mary TITLE Regulatory Engineer DATE 12-5-19
 Type or print name Kathleen Mary E-mail address: kathleen-mary@oxy.com PHONE: 713-346-5109
For State Use Only

APPROVED BY: _____ TITLE _____ DATE _____
 Conditions of Approval (if any): _____

APPLICATION FOR POOL COMMINGLE & OFF-LEASE STORAGE, MEASUREMENT AND SALES

Commingle proposal for the Salt Flat CTB – Train #4

OXY USA INC respectfully requests approval of a pool commingle and off-lease storage, measurement and sales for Train #4 at the Salt Flat CTB (Lat 32.208183, Long -104.010796, C- 20-24S-29E). Oxbow CC 17 08 Federal Com #034H, Oxbow CC 17 08 Federal Com #038H, Oxbow CC 17 08 Federal Com #036H, and Oxbow CC 17 08 Federal Com #035H will produce to Train #4 and require a pool commingle and off-lease storage, measurement and sales. Production from the four Trains will be kept separate and only commingled downstream of the LACT used for the BLM's royalty payments.

POOL COMMINGLE & OFF-LEASE STORAGE, MEASUREMENT AND SALES - TRAIN #4

POOLS: PIERCE CROSSING; BONE SPRING (50371) & PURPLE SAGE; WOLFCAMP (98220)

COM AGREEMENT PENDING

12.5% BLM ROYALTY 12.5% (NMNM 102913) & 18.75% BLM ROYALTY 12.5% (NMNM 117120) & 6.25% BLM ROYALTY 12.5% (NMNM 94651) & 62.5% FEE

FOR BLM INTEREST ALLOCATION OF 4.69%

Well Name	API	Surface Location	Pool	POOL CODE	EST DATE ONLINE	Est. Oil (bpd)	Est. Gravity API	Est. Gas (MSCFD)	Est. BTU/cf	Est. Water (bpd)
Oxbow CC 17 08 Federal Com #034H	30-015-45086	P-17-24S-29E	PURPLE SAGE; WOLFCAMP	98220	Mar-20	1098	44	2605	1300	2935
Oxbow CC 17 08 Federal Com #038H	30-015-46401	N-17-24S-29E	PURPLE SAGE; WOLFCAMP	98220	Mar-20	1098	44	2605	1300	2935
Oxbow CC 17 08 Federal Com #036H	30-015-45088	P-17-24S-29E	PURPLE SAGE; WOLFCAMP	98220	Mar-20	1098	44	2605	1300	2935
Oxbow CC 17 08 Federal Com #035H	30-015-45087	P-17-24S-29E	PIERCE CROSSING; BONE SPRING	50371	Mar-20	1098	44	2605	1300	2935

Process Description:

For each Facility Train, production is sent through a 10' X 40' three-phase production separator. Oil production flows through a line heater then to an 8' X 20' heater treater before being sent to a 4' vapor recovery tower. Oil then flows to two oil storage tanks before being pumped through one of two LACT meters S/N*, which will serve as the FMPs for BLM royalty payments. Oil from all four trains then combines and routes to two oil storage tanks before being pumped through one of three LACT meters S/N*, which will serve as Oxy's sales point. A truck load FMP will be set up at the Facility for use as back-up in the event of a LACT meter failure.

Oil and gas production will be allocated back to each well based on well test. For testing purposes, each Train will be equipped with one permanent 8' x 20' three-phase test separator. Each test vessel will be equipped with oil turbine meters (S/N*), gas orifice meters (S/N*) and water turbine meters.

All wells will be tested daily prior to Range 1 of decline, and will be tested at least three times per month during Range 1 of decline. When Range 2 decline is started, the wells will be tested at least twice per month. Wells will be tested at least once per month when Range 3 of decline is started, as specified in Hearing Order R-14299.

*Meter number to be submitted upon installation. The oil and gas meters will be calibrated on a regular basis per API, NMOCD and BLM specifications.

Gas production from all wells at each Train will be combined after the production and test separators. It will then flow through an orifice meter S/N*, which will serve as the gas FMP for that Train for the purpose of BLM royalty payment, then sent to one of two 5' x 10' gas scrubbers, and then sent to sales.

All water from the Salt Flat CTB will be sent to the Cedar Canyon Water Disposal System.

*Meter number to be submitted upon installation. The oil and gas meters will be calibrated on a regular basis per API, NMOCD and BLM specifications.

Additional Application Components:

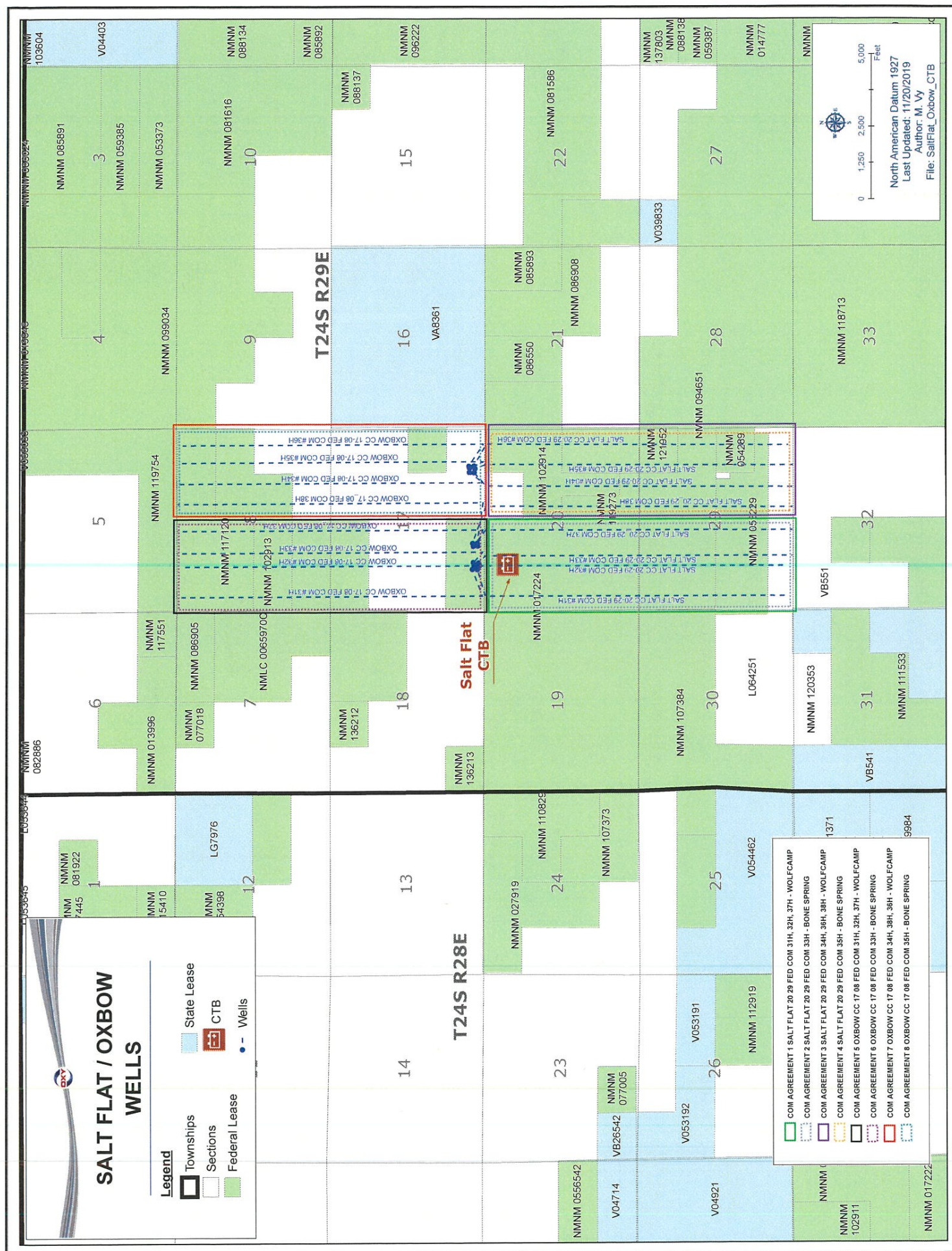
The flow of production is shown in detail on the enclosed facility diagram. Also enclosed is a map detailing the lease boundaries, well and battery locations.

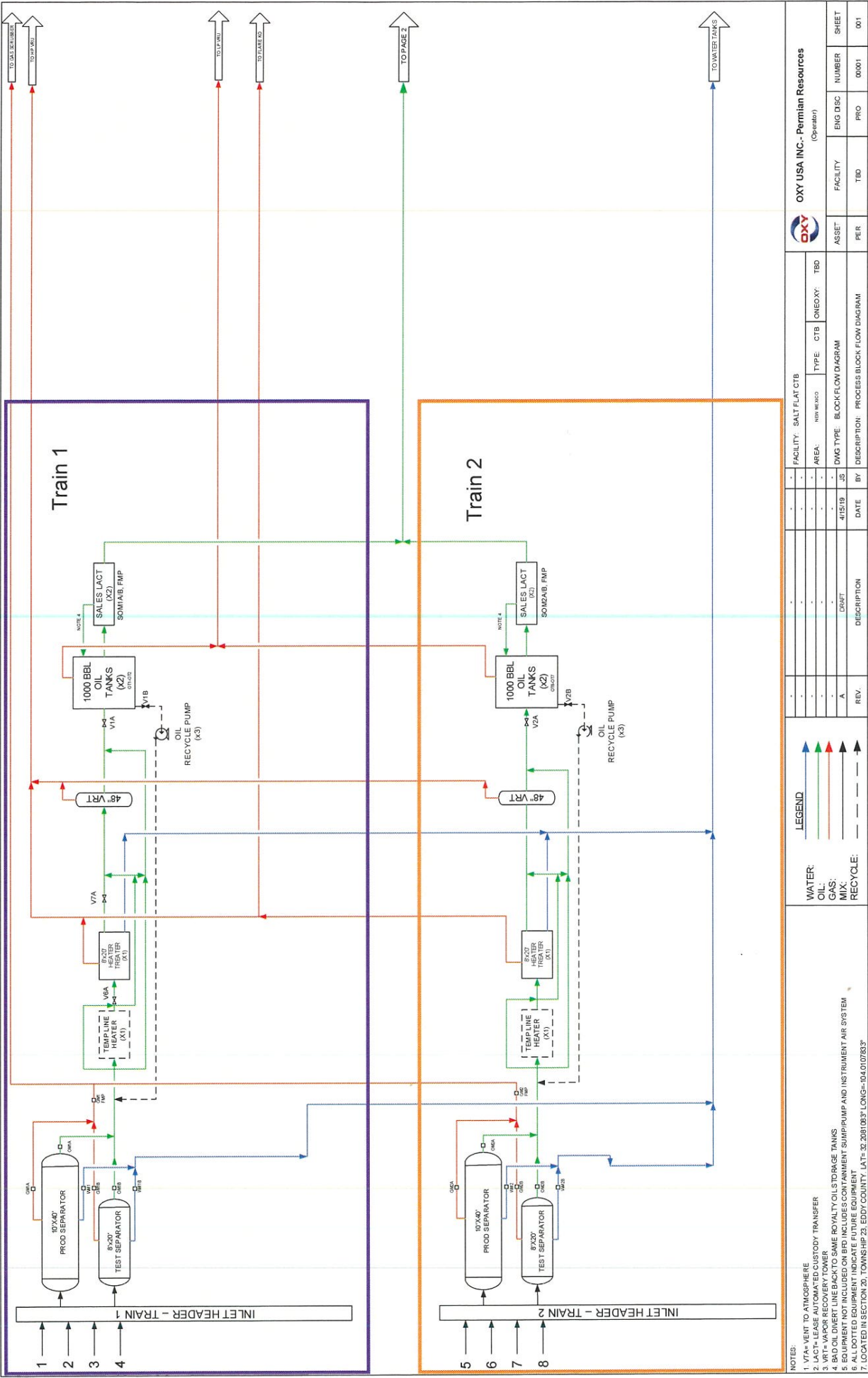
All wells in each train have identical ownership therefore notification was not required.

Pursuant to Statewide rule 19.15.12.10(C)(4)(g) OXY USA INC requests the option to include additional pools or leases within the defined parameters set forth in the Order for future additions.

Commingling this production is the most effective means of producing the reserves. The surface commingle application will be submitted separately for approval per NMOCD and BLM regulations.

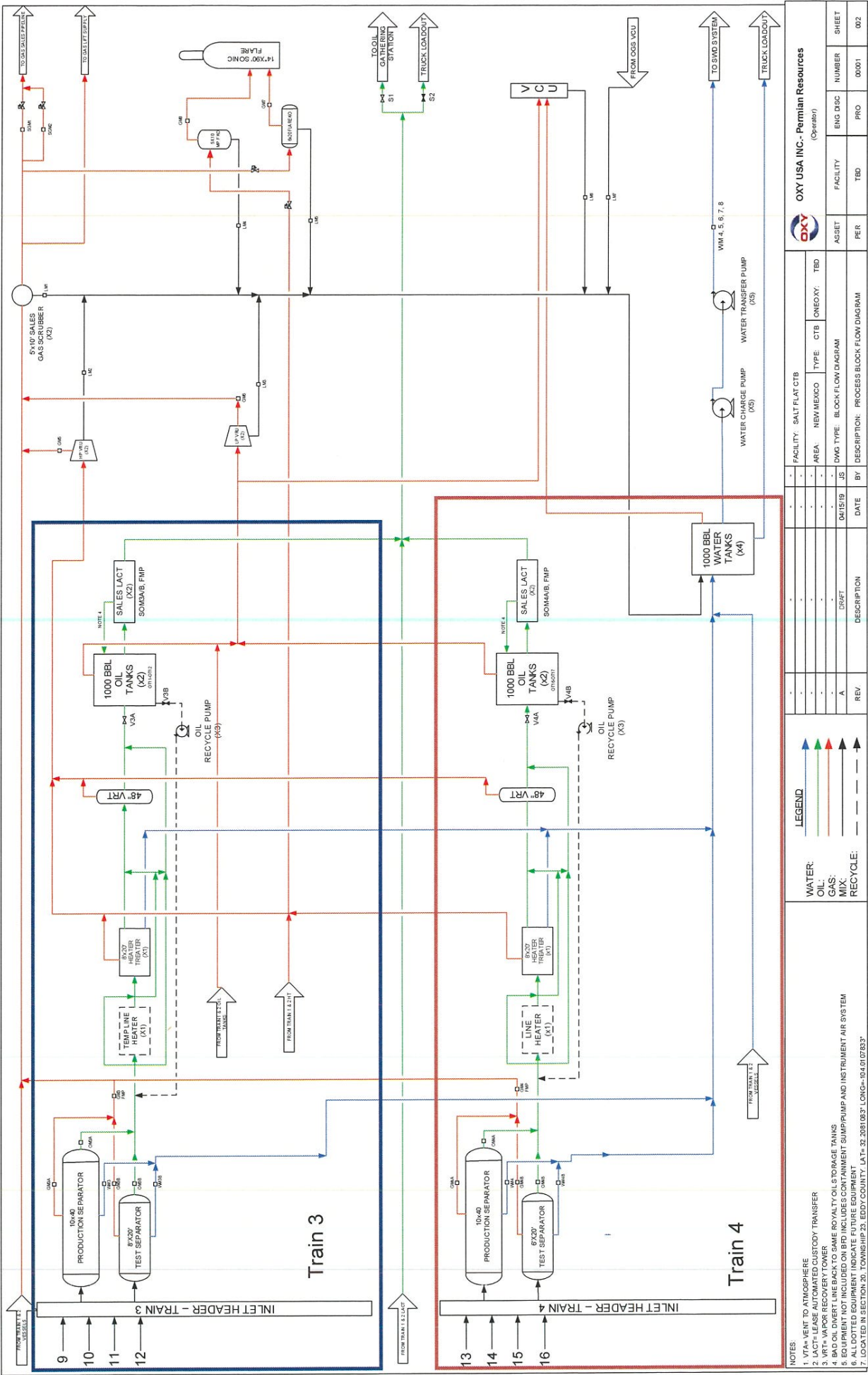
OXY USA INC understands the requested approval will not constitute the granting of any right-of-way or construction rights not granted by the lease instrument.





OXY USA INC. - Permian Resources	
(Operator)	
ASSET	PER
FACILITY	TBD
ENG DISC	NUMBER
PRO	0001
SHEET	001

FACILITY: SALT FLAT CTB	
AREA	TYPE
NEW MEXICO	CTB
ONEOXY	TBD
DWG TYPE: BLOCKFLOW DIAGRAM	
DATE	BY
4/15/19	JS
DESCRIPTION	DESCRIPTION: PROCESS BLOCK FLOW DIAGRAM
REV.	
A	0001



NOTES:				OXY USA INC. - Permian Resources			
1. VFA - VENT TO ATMOSPHERE	2. LACT - LEASE AUTOMATED CUSTODY TRANSFER	3. VRT - VAPOR RECOVERY TOWER	4. BAD OIL INERT LINE BACK TO SAME ROYALTY OIL STORAGE TANKS	5. EQUIPMENT NOT INCLUDED ON BPD INCLUDES CONTAINMENT SUMP/PUMP AND INSTRUMENT AIR SYSTEM	6. ALL DOTTED EQUIPMENT INDICATE FUTURE EQUIPMENT	7. LOCATED IN SECTION 20, TOWNSHIP 23, EDDY COUNTY, LAT: 32.2081683° LONG: -104.0167633°	
LEGEND				FACILITY	SALT FLAT CTB	ONE OXY	TBD
WATER:				AREA	NEW MEXICO	TYPE	CTB
OIL:				DWG TYPE	BLOCK FLOW DIAGRAM	DESCRIPTION	PROCESS BLOCK FLOW DIAGRAM
GAS:				DATE	04/15/19	BY	JS
MIX:				REV	A	DESCRIPTION	
RECYCLE:				ASSET	PER	TBD	0001
				FACILITY	TBD	PRO	002
				ENGINEER	TBD	SHEET	

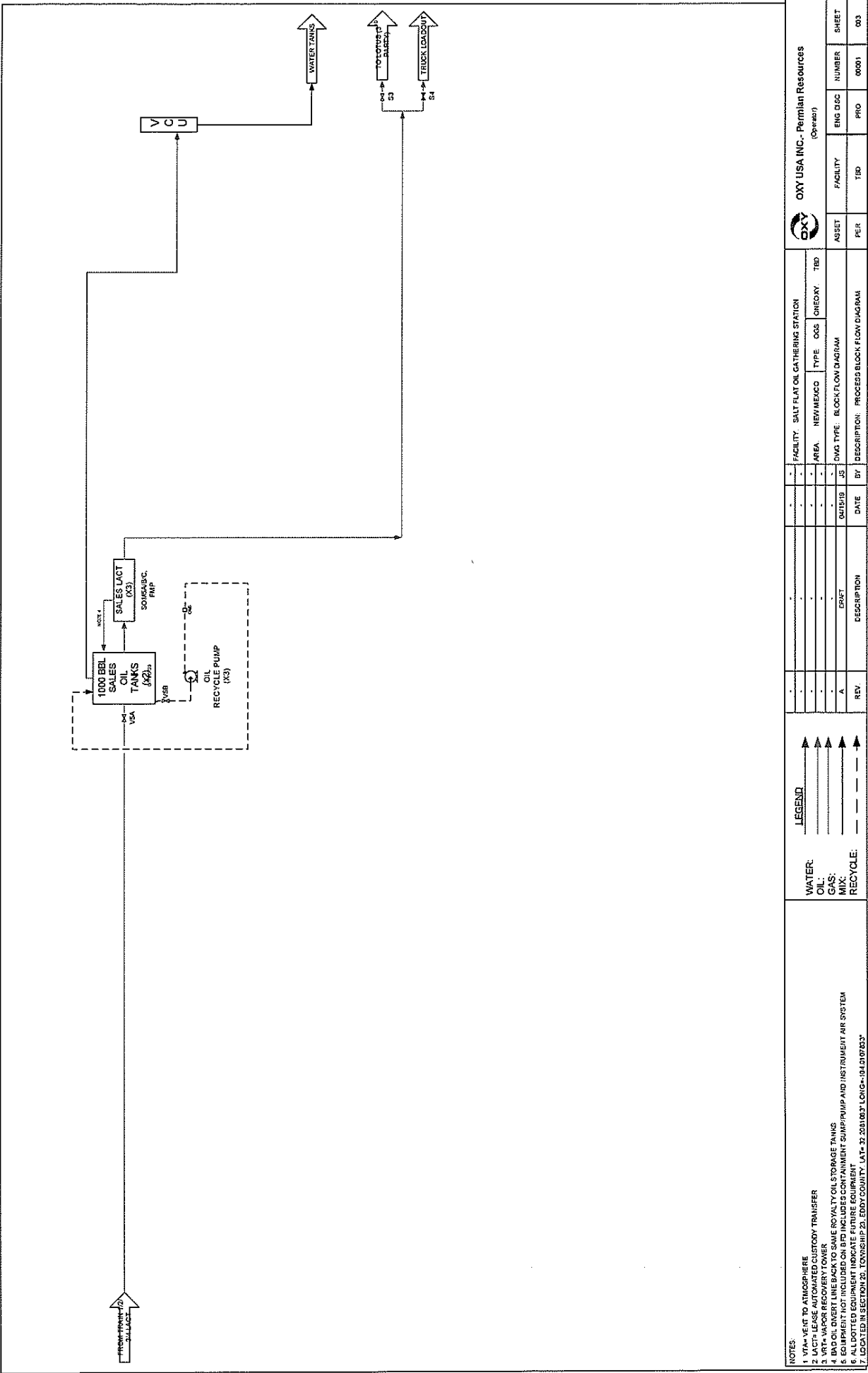


Table 1: Well Details		
No.	Train	Well Name
1	1	Salt Flat 20 23 Federal Com #031H
2	1	Salt Flat 20 23 Federal Com #032H
3	1	Salt Flat 20 23 Federal Com #033H
4	1	Salt Flat 20 23 Federal Com #034H
5	2	Salt Flat CC 20 23 Federal Com #035H
6	2	Salt Flat CC 20 23 Federal Com #035H
7	2	Salt Flat CC 20 23 Federal Com #036H
8	2	Salt Flat CC 20 23 Federal Com #036H
9	3	Chibow CC 17 08 Federal Com #037H
10	3	Chibow CC 17 08 Federal Com #037H
11	3	Chibow CC 17 08 Federal Com #037H
12	3	Chibow CC 17 08 Federal Com #038H
13	4	Chibow CC 17 08 Federal Com #038H
14	4	Chibow CC 17 08 Federal Com #038H
15	4	Chibow CC 17 08 Federal Com #038H
16	4	Chibow CC 17 08 Federal Com #038H

Table 2: Valve Details		
Production Phase	Valve ID	Position
V1A	OPEN	V1A
V1B	OPEN	V1B
V2A	OPEN	V2A
V2B	OPEN	V2B
V3A	OPEN	V3A
V3B	OPEN	V3B
V4A	OPEN	V4A
V4B	OPEN	V4B
S1	CLOSED	S1
S2	CLOSED	S2
S3	OPEN	S3
S4	CLOSED	S4

Table 3: Meter Details		
Meter ID	Meter S/N	Type
GM1A	TBD	ORIFICE
GM1B	TBD	ORIFICE
GM1C	TBD	ORIFICE
GM2A	TBD	ORIFICE
GM2B	TBD	ORIFICE
GM2C	TBD	ORIFICE
GM3A	TBD	ORIFICE
GM3B	TBD	ORIFICE
GM3C	TBD	ORIFICE
GM4A	TBD	ORIFICE
GM4B	TBD	ORIFICE
GM4C	TBD	ORIFICE
GM1	TBD	ORIFICE
GM2	TBD	ORIFICE
GM3	TBD	ORIFICE
GM4	TBD	ORIFICE
GM5	TBD	ORIFICE
GM6	TBD	ORIFICE
GM7	TBD	ORIFICE
GM8	TBD	ORIFICE
SGM1	TBD	ORIFICE
OM1A	TBD	TURBINE
OM1B	TBD	TURBINE
OM1C	TBD	TURBINE
OM2A	TBD	TURBINE
OM2B	TBD	TURBINE
OM2C	TBD	TURBINE
OM3A	TBD	TURBINE
OM3B	TBD	TURBINE
OM3C	TBD	TURBINE

Table 3: Meter Details (Cont.)		
Meter ID	Meter S/N	Type
OM4A	TBD	ORIFICE
OM4B	TBD	ORIFICE
OM4C	TBD	ORIFICE
OM5	TBD	ORIFICE
OM6	TBD	ORIFICE
OM7	TBD	ORIFICE
OM8	TBD	ORIFICE
SGM1	TBD	ORIFICE
OM1A	TBD	TURBINE
OM1B	TBD	TURBINE
OM1C	TBD	TURBINE
OM2A	TBD	TURBINE
OM2B	TBD	TURBINE
OM2C	TBD	TURBINE
OM3A	TBD	TURBINE
OM3B	TBD	TURBINE
OM3C	TBD	TURBINE

Table 4: Oil Tank Details		
Tank ID	Train	S/N
OT1	1	TBD
OT2	1	TBD
OT6	2	TBD
OT7	2	TBD
OT11	3	TBD
OT12	3	TBD
OT16	4	TBD
OT17	4	TBD
OT19	SALES	TBD
OT20	SALES	TBD

Table 5: Meter Details (Cont.)		
Meter ID	Meter S/N	Type
OM4A	TBD	ORIFICE
OM4B	TBD	ORIFICE
OM4C	TBD	ORIFICE
OM5	TBD	ORIFICE
OM6	TBD	ORIFICE
OM7	TBD	ORIFICE
OM8	TBD	ORIFICE
SGM1	TBD	ORIFICE
OM1A	TBD	TURBINE
OM1B	TBD	TURBINE
OM1C	TBD	TURBINE
OM2A	TBD	TURBINE
OM2B	TBD	TURBINE
OM2C	TBD	TURBINE
OM3A	TBD	TURBINE
OM3B	TBD	TURBINE
OM3C	TBD	TURBINE

Table 6: Meter Details (Cont.)		
Meter ID	Meter S/N	Type
OM4A	TBD	ORIFICE
OM4B	TBD	ORIFICE
OM4C	TBD	ORIFICE
OM5	TBD	ORIFICE
OM6	TBD	ORIFICE
OM7	TBD	ORIFICE
OM8	TBD	ORIFICE
SGM1	TBD	ORIFICE
OM1A	TBD	TURBINE
OM1B	TBD	TURBINE
OM1C	TBD	TURBINE
OM2A	TBD	TURBINE
OM2B	TBD	TURBINE
OM2C	TBD	TURBINE
OM3A	TBD	TURBINE
OM3B	TBD	TURBINE
OM3C	TBD	TURBINE

Table 7: Well Details		
No.	Train	Well Name
1	1	Salt Flat 20 23 Federal Com #031H
2	1	Salt Flat 20 23 Federal Com #032H
3	1	Salt Flat 20 23 Federal Com #033H
4	1	Salt Flat 20 23 Federal Com #034H
5	2	Salt Flat CC 20 23 Federal Com #035H
6	2	Salt Flat CC 20 23 Federal Com #035H
7	2	Salt Flat CC 20 23 Federal Com #036H
8	2	Salt Flat CC 20 23 Federal Com #036H
9	3	Chibow CC 17 08 Federal Com #037H
10	3	Chibow CC 17 08 Federal Com #037H
11	3	Chibow CC 17 08 Federal Com #037H
12	3	Chibow CC 17 08 Federal Com #038H
13	4	Chibow CC 17 08 Federal Com #038H
14	4	Chibow CC 17 08 Federal Com #038H
15	4	Chibow CC 17 08 Federal Com #038H
16	4	Chibow CC 17 08 Federal Com #038H

Table 8: Valve Details		
Production Phase	Valve ID	Position
V1A	OPEN	V1A
V1B	OPEN	V1B
V2A	OPEN	V2A
V2B	OPEN	V2B
V3A	OPEN	V3A
V3B	OPEN	V3B
V4A	OPEN	V4A
V4B	OPEN	V4B
S1	CLOSED	S1
S2	CLOSED	S2
S3	OPEN	S3
S4	CLOSED	S4

Table 9: Meter Details (Cont.)		
Meter ID	Meter S/N	Type
OM4A	TBD	ORIFICE
OM4B	TBD	ORIFICE
OM4C	TBD	ORIFICE
OM5	TBD	ORIFICE
OM6	TBD	ORIFICE
OM7	TBD	ORIFICE
OM8	TBD	ORIFICE
SGM1	TBD	ORIFICE
OM1A	TBD	TURBINE
OM1B	TBD	TURBINE
OM1C	TBD	TURBINE
OM2A	TBD	TURBINE
OM2B	TBD	TURBINE
OM2C	TBD	TURBINE
OM3A	TBD	TURBINE
OM3B	TBD	TURBINE
OM3C	TBD	TURBINE

Table 10: Meter Details (Cont.)		
Meter ID	Meter S/N	Type
OM4A	TBD	ORIFICE
OM4B	TBD	ORIFICE
OM4C	TBD	ORIFICE
OM5	TBD	ORIFICE
OM6	TBD	ORIFICE
OM7	TBD	ORIFICE
OM8	TBD	ORIFICE
SGM1	TBD	ORIFICE
OM1A	TBD	TURBINE
OM1B	TBD	TURBINE
OM1C	TBD	TURBINE
OM2A	TBD	TURBINE
OM2B	TBD	TURBINE
OM2C	TBD	TURBINE
OM3A	TBD	TURBINE
OM3B	TBD	TURBINE
OM3C	TBD	TURBINE

Table 11: Meter Details (Cont.)		
Meter ID	Meter S/N	Type
OM4A	TBD	ORIFICE
OM4B	TBD	ORIFICE
OM4C	TBD	ORIFICE
OM5	TBD	ORIFICE
OM6	TBD	ORIFICE
OM7	TBD	ORIFICE
OM8	TBD	ORIFICE
SGM1	TBD	ORIFICE
OM1A	TBD	TURBINE
OM1B	TBD	TURBINE
OM1C	TBD	TURBINE
OM2A	TBD	TURBINE
OM2B	TBD	TURBINE
OM2C	TBD	TURBINE
OM3A	TBD	TURBINE
OM3B	TBD	TURBINE
OM3C	TBD	TURBINE

Table 12: Meter Details (Cont.)		
Meter ID	Meter S/N	Type
OM4A	TBD	ORIFICE
OM4B	TBD	ORIFICE
OM4C	TBD	ORIFICE
OM5	TBD	ORIFICE
OM6	TBD	ORIFICE
OM7	TBD	ORIFICE
OM8	TBD	ORIFICE
SGM1	TBD	ORIFICE
OM1A	TBD	TURBINE
OM1B	TBD	TURBINE
OM1C	TBD	TURBINE
OM2A	TBD	TURBINE
OM2B	TBD	TURBINE
OM2C	TBD	TURBINE
OM3A	TBD	TURBINE
OM3B	TBD	TURBINE
OM3C	TBD	TURBINE

Table 13: Meter Details (Cont.)		
Meter ID	Meter S/N	Type
OM4A	TBD	ORIFICE
OM4B	TBD	ORIFICE
OM4C	TBD	ORIFICE
OM5	TBD	ORIFICE
OM6	TBD	ORIFICE
OM7	TBD	ORIFICE
OM8	TBD	ORIFICE
SGM1	TBD	ORIFICE
OM1A	TBD	TURBINE
OM1B	TBD	TURBINE
OM1C	TBD	TURBINE
OM2A	TBD	TURBINE
OM2B	TBD	TURBINE
OM2C	TBD	TURBINE
OM3A	TBD	TURBINE
OM3B	TBD	TURBINE
OM3C	TBD	TURBINE

Table 14: Meter Details (Cont.)		
Meter ID	Meter S/N	Type
OM4A	TBD	ORIFICE
OM4B	TBD	ORIFICE
OM4C	TBD	ORIFICE
OM5	TBD	ORIFICE
OM6	TBD	ORIFICE
OM7	TBD	ORIFICE
OM8	TBD	ORIFICE
SGM1	TBD	ORIFICE
OM1A	TBD	TURBINE
OM1B	TBD	TURBINE
OM1C	TBD	TURBINE
OM2A	TBD	TURBINE
OM2B	TBD	TURBINE
OM2C	TBD	TURBINE
OM3A	TBD	TURBINE
OM3B	TBD	TURBINE
OM3C	TBD	TURBINE

Table 15: Meter Details (Cont.)		
Meter ID	Meter S/N	Type
OM4A	TBD	ORIFICE
OM4B	TBD	ORIFICE
OM4C	TBD	ORIFICE
OM5	TBD	ORIFICE
OM6	TBD	ORIFICE
OM7	TBD	ORIFICE
OM8	TBD	ORIFICE
SGM1	TBD	ORIFICE
OM1A	TBD	TURBINE
OM1B	TBD	TURBINE
OM1C	TBD	TURBINE
OM2A	TBD	TURBINE
OM2B	TBD	TURBINE
OM2C	TBD	TURBINE
OM3A	TBD	TURBINE
OM3B	TBD	TURBINE
OM3C	TBD	TURBINE

Table 16: Meter Details (Cont.)		
Meter ID	Meter S/N	Type
OM4A	TBD	ORIFICE
OM4B	TBD	ORIFICE
OM4C	TBD	ORIFICE
OM5	TBD	ORIFICE
OM6	TBD	ORIFICE
OM7	TBD	ORIFICE
OM8	TBD	ORIFICE
SGM1	TBD	ORIFICE
OM1A	TBD	TURBINE
OM1B	TBD	TURBINE
OM1C	TBD	TURBINE
OM2A	TBD	TURBINE
OM2B	TBD	TURBINE
OM2C	TBD	TURBINE
OM3A	TBD	TURBINE
OM3B	TBD	TURBINE
OM3C	TBD	TURBINE

Table 17: Meter Details (Cont.)		
Meter ID	Meter S/N	Type
OM4A	TBD	ORIFICE
OM4B	TBD	ORIFICE
OM4C	TBD	ORIFICE
OM5	TBD	ORIFICE
OM6	TBD	ORIFICE
OM7	TBD	ORIFICE
OM8	TBD	ORIFICE
SGM1	TBD	ORIFICE
OM1A	TBD	TURBINE
OM1B	TBD	TURBINE
OM1C	TBD	TURBINE
OM2A	TBD	TURBINE
OM2B	TBD	TURBINE
OM2C	TBD	TURBINE
OM3A	TBD	TURBINE
OM3B	TBD	TURBINE
OM3C	TBD	TURBINE

Table 18: Meter Details (Cont.)		
Meter ID	Meter S/N	Type
OM4A	TBD	ORIFICE
OM4B	TBD	ORIFICE
OM4C	TBD	ORIFICE
OM5	TBD	ORIFICE
OM6	TBD	ORIFICE
OM7	TBD	ORIFICE
OM8	TBD	ORIFICE
SGM1	TBD	ORIFICE
OM1A	TBD	TURBINE
OM1B	TBD	TURBINE
OM1C	TBD	TURBINE
OM2A	TBD	TURBINE
OM2B	TBD	TURBINE
OM2C	TBD	TURBINE
OM3A	TBD	TURBINE
OM3B	TBD	TURBINE
OM3C	TBD	TURBINE

Table 19: Meter Details (Cont.)		
Meter ID	Meter S/N	Type
OM4A	TBD	ORIFICE
OM4B	TBD	ORIFICE
OM4C	TBD	ORIFICE
OM5	TBD	ORIFICE
OM6	TBD	ORIFICE
OM7	TBD	ORIFICE
OM8	TBD	ORIFICE
SGM1	TBD	ORIFICE
OM1A	TBD	TURBINE
OM1B	TBD	TURBINE
OM1C	TBD	TURBINE
OM2A	TBD	TURBINE
OM2B	TBD	TURBINE
OM2C	TBD	TURBINE
OM3A	TBD	TURBINE
OM3B	TBD	TURBINE
OM3C	TBD	TURBINE

Table 20: Meter Details (Cont.)		
Meter ID	Meter S/N	Type
OM4A	TBD	ORIFICE
OM4B	TBD	ORIFICE
OM4C	TBD	ORIFICE
OM5	TBD	ORIFICE
OM6	TBD	ORIFICE
OM7	TBD	ORIFICE
OM8	TBD	ORIFICE
SGM1	TBD	ORIFICE
OM1A	TBD	TURBINE
OM1B	TBD	TURBINE
OM1C	TBD	TURBINE
OM2A	TBD	TURBINE
OM2B	TBD	TURBINE
OM2C	TBD	TURBINE
OM3A	TBD	TURBINE
OM3B	TBD	TURBINE
OM3C	TBD	TURBINE

Table 21: Meter Details (Cont.)		
Meter ID	Meter S/N	Type
OM4A	TBD	ORIFICE
OM4B	TBD	ORIFICE
OM4C	TBD	ORIFICE
OM5	TBD	ORIFICE
OM6	TBD	ORIFICE
OM7	TBD	ORIFICE
OM8	TBD	ORIFICE
SGM1	TBD	ORIFICE
OM1A	TBD	TURBINE
OM1B	TBD	TURBINE
OM1C	TBD	TURBINE
OM2A	TBD	TURBINE
OM2B	TBD	TURBINE
OM2C	TBD	TURBINE
OM3A	TBD	TURBINE
OM3B	TBD	TURBINE
OM3C	TBD	TURBINE

Table 22: Meter Details (Cont.)		
Meter ID	Meter S/N	Type
OM4A	TBD	ORIFICE
OM4B	TBD	ORIFICE
OM4C	TBD	ORIFICE
OM5	TBD	ORIFICE
OM6	TBD	ORIFICE
OM7	TBD	ORIFICE
OM8	TBD	ORIFICE
SGM1	TBD	ORIFICE
OM1A	TBD	TURBINE
OM1B	TBD	TURBINE
OM1C	TBD	TURBINE
OM2A	TBD	TURBINE
OM2B	TBD	TURBINE
OM2C	TBD	TURBINE
OM3A	TBD	TURBINE
OM3B	TBD	TURBINE
OM3C	TBD	TURBINE

Table 23: Meter Details (Cont.)		
Meter ID	Meter S/N	Type
OM4A	TBD	ORIFICE
OM4B	TBD	ORIFICE
OM4C	TBD	ORIFICE
OM5	TBD	ORIFICE
OM6	TBD	ORIFICE
OM7	TBD	ORIFICE
OM8	TBD	ORIFICE
SGM1	TBD	ORIFICE
OM1A	TBD	TURBINE
OM1B	TBD	TURBINE
OM1C	TBD	TURBINE
OM2A	TBD	TURBINE
OM2B	TBD	TURBINE
OM2C	TBD	TURBINE
OM3A	TBD	TURBINE
OM3B	TBD	TURBINE
OM3C	TBD	TURBINE

Table 24: Meter Details (Cont.)		
Meter ID	Meter S/N	Type
OM4A	TBD	ORIFICE
OM4B	TBD	ORIFICE
OM4C	TBD	ORIFICE
OM5	TBD	ORIFICE
OM6	TBD	ORIFICE
OM7	TBD	ORIFICE
OM8	TBD	ORIFICE
SGM1	TBD	ORIFICE
OM1A	TBD	TURBINE
OM1B	TBD	TURBINE
OM1C	TBD	TURBINE
OM2A	TBD	TURBINE
OM2B	TBD	TURBINE
OM2C	TBD	TURBINE
OM3A	TBD	TURBINE
OM3B	TBD	TURBINE
OM3C	TBD	TURBINE

Table 25: Meter Details (Cont.)		
Meter ID	Meter S/N	Type
OM4A	T	



OXY USA INC
A subsidiary of Occidental Petroleum Corporation

5 Greenway Plaza, Suite 110, Houston, Texas 77046
P.O. Box 4294, Houston, Texas 77210-4294
Direct: 713.366.5109
Kathleen_Mowery@oxy.com

December 5, 2019

CERTIFIED MAIL
RETURN RECEIPT REQUESTED

To Whom It May Concern:

This is to advise you that OXY USA INC is filing an Off Lease Measurement application with the New Mexico Oil Conservation Division and Bureau of Land Management for the following wells:

- Oxbow CC 17 08 Federal Com #034H
- Oxbow CC 17 08 Federal Com #035H
- Oxbow CC 17 08 Federal Com #036H
- Oxbow CC 17 08 Federal Com #038H

A copy of the application is enclosed for your review.

Pursuant to NMAC 19.15.23.9, interested parties must file objections or requests for hearing in writing with the New Mexico Oil Conservation Division office within 20 days after notice, or the Commission may approve the application.

For questions pertaining to the application, please contact Kathleen Mowery at (713) 366-5109.

Respectfully,

A handwritten signature in blue ink that reads "Kathleen Mowery".

OXY USA INC
Kathleen Mowery
Permian Regulatory
(713) 366-5109
Kathleen_Mowery@oxy.com

Off-lease storage, measurement, and sales notification list - Salt Flat Train #4

ToName	DeliveryAddress	City	State	Zip	MailDate	TrackingNo
Roy A. Barton III	1919 N Turner	Hobbs	NM	88241	12/05/2019	9414810898765049479692
Beryl Oil and Gas, LP	P. O. Box 51440	Midland	TX	79710	12/05/2019	9414810898765049479678
Brett Barton c/o Barton Oil	1919 N. Turner Street	Hobbs	NM	88240	12/05/2019	9414810898765049479685
DRW Energy, LLC	400 W. Illinois, Suite 970	Midland	TX	79701	12/05/2019	9414810898765049479661
Leopard Petroleum LP	P. O. Box 51440	Midland	TX	79710	12/05/2019	9414810898765049479647
MElissa L. McKinney Schoening	301 Sir Barton Parkway	Midland	TX	79705	12/05/2019	9414810898765049479654
B. Jack Reed	506 Charismatic	Midland	TX	79705	12/05/2019	9414810898765049479630
GD McKinney Investments LP	300 N Marienfeld Ste1100	Midland	TX	79701	12/05/2019	9414810898765049479593
EOG A, M & Y Resources, Inc.	5509 Champions Drive	Midland	TX	79706	12/05/2019	9414810898765049479616

RECEIVED

JUN 28 2018

Form C-102

Revised August 1, 2011

State of New Mexico
Energy, Minerals & Natural Resources Department
OIL CONSERVATION DIVISION
1220 South St. Francis Dr.
Santa Fe, NM 87505

DISTRICT II - SOUTHERN DISTRICT
to appropriate
District Office

☐ AMENDED REPORT

District I
1625 N. French Dr., Hobbs, NM 88240
Phone: (575) 393-6161 Fax: (575) 393-0720
District II
811 S. First St., Azusa, NM 88210
Phone: (575) 748-1283 Fax: (575) 748-9720
District III
1000 Rio Grande Road, Aztec, NM 87410
Phone: (505) 334-6178 Fax: (505) 334-6170
District IV
1220 S. St. Francis Dr., Santa Fe, NM 87505
Phone: (505) 476-3460 Fax: (505) 476-3462

WELL LOCATION AND ACREAGE DEDICATION PLAT

API Number 30-05-45086	Pool Code 98220	Pool Name Purple Sage Wolfraund
Property Code 321633	Property Name OXBOW CC "17-8" FEDERAL COM	Well Number 34H
OGRID No. 16696	Operator Name OXY USA INC.	Elevation 2925.6'

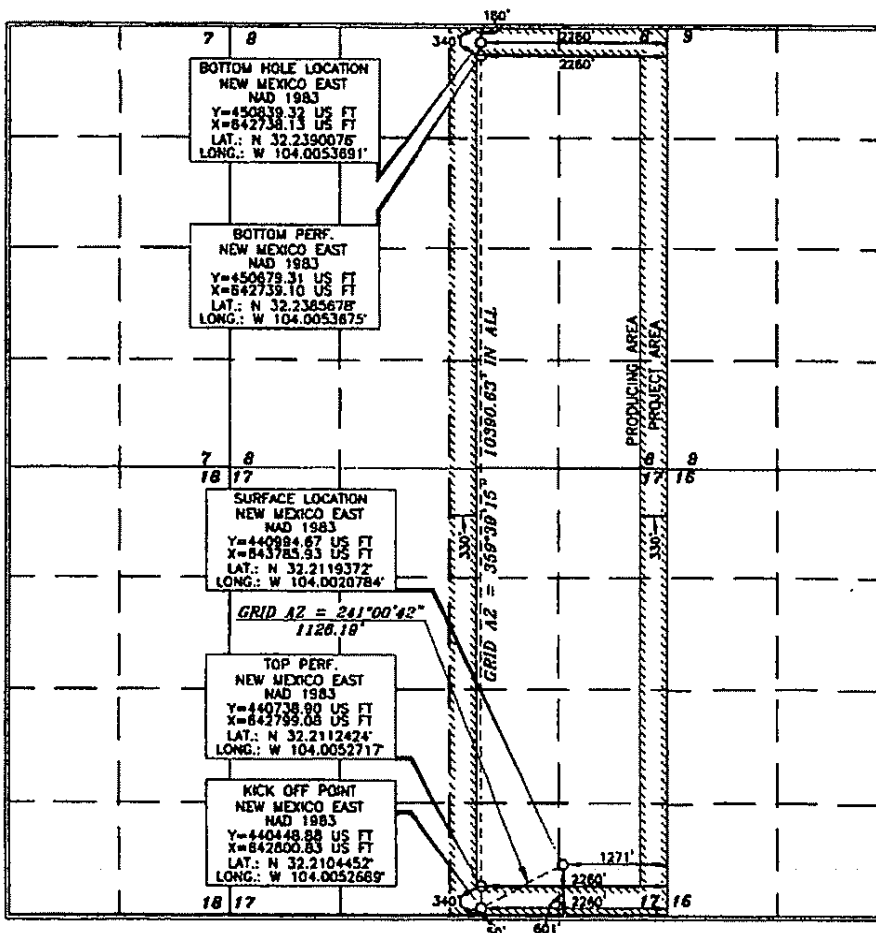
Surface Location

UL or lot no.	Section	Township	Range	Lot Idn	Feet from the	North/South line	Feet from the	East/West line	County
P	17	24 SOUTH	29 EAST, N.M.P.M.		601'	SOUTH	1271'	EAST	EDDY

Bottom Hole Location If Different From Surface

UL or lot no.	Section	Township	Range	Lot Idn	Feet from the	North/South line	Feet from the	East/West line	County
B	8	24 SOUTH	29 EAST, N.M.P.M.		180'	NORTH	2260'	EAST	EDDY
Dedicated Acres 640	Joint or Infill Yes	Consolidation Code	Order No.						

No allowable will be assigned to this completion until all interests have been consolidated or a non-standard unit has been approved by the division.



OPERATOR CERTIFICATION

I hereby certify that the information contained herein is true and complete to the best of my knowledge and belief, and that this organization either owns a working interest or unleased mineral interest in the land including the proposed bottom hole location or has a right to drill the well at this location pursuant to a contract with an owner of such a mineral or working interest, or to a voluntary pooling agreement or a compulsory pooling order heretofore entered by the division.

Signature: David Stewart Date: 2/5/18

Printed Name: David Stewart
E-mail Address: David.Stewart@oxy.com

SURVEYOR CERTIFICATION

I hereby certify that the plat shown on this plat was prepared from the original surveys made by me or under my supervision, and that the same is true and correct to the best of my belief.

Date of Survey: NOVEMBER 18, 2017

Signature and Seal of Professional Surveyor: Terry J. Ag...

Certificate Number: 15079

WOF 17111QWL-a (Rev. A) (K)

7-3-18 RUP

District I
1625 N. French Dr., Hobbs, NM 88240
Phone: (575) 393-6161 Fax: (575) 393-0720
District II
911 S. First St., Artesia, NM 88210
Phone: (575) 748-1263 Fax: (575) 748-9720
District III
1000 Rio Brazos Road, Aztec, NM 87410
Phone: (505) 334-6178 Fax: (505) 334-6170
District IV
1220 S. St. Francis Dr., Santa Fe, NM 87505
Phone: (505) 476-3460 Fax: (505) 476-3462

State of New Mexico
Energy, Minerals & Natural Resources Department
OIL CONSERVATION DIVISION
1220 South St. Francis Dr.
Santa Fe, NM 87505

Form C-102
Revised August 1, 2011
Submit one copy to appropriate
District Office

AMENDED REPORT

WELL LOCATION AND ACREAGE DEDICATION PLAT

API Number 30-015-45087	Pool Code 50371	Pool Name Pierce Crossing Bene Spring
Property Code	Property Name OXBOW CC "17-8" FEDERAL COM	Well Number 35H
OGRID No. 16696	Operator Name OXY USA INC.	Elevation 2926.5'

Surface Location

UL or lot no.	Section	Township	Range	Lot Idn	Feet from the	North/South line	Feet from the	East/West line	County
P	17	24 SOUTH	29 EAST, N.M.P.M.		601'	SOUTH	1236'	EAST	EDDY

Bottom Hole Location If Different From Surface

UL or lot no.	Section	Township	Range	Lot Idn	Feet from the	North/South line	Feet from the	East/West line	County
A	8	24 SOUTH	29 EAST, N.M.P.M.		20'	NORTH	990'	EAST	EDDY
Dedicated Acres 1040	Joint or Infill	Consolidation Code	Order No.						

No allowable will be assigned to this completion until all interests have been consolidated or a non-standard unit has been approved by the division.

	<p>OPERATOR CERTIFICATION</p> <p>I hereby certify that the information contained herein is true and complete to the best of my knowledge and belief, and that this organization either owns a working interest or unleased mineral interest in the land including the proposed bottom hole location or has a right to drill this well at this location pursuant to a contract with an owner of such a mineral or working interest, or to a voluntary pooling agreement or a compulsory pooling order heretofore entered by the division.</p> <p>Signature: <u>Sarah Chapman</u> Date: <u>6/2/19</u></p> <p>Printed Name: <u>Sarah Chapman</u></p> <p>E-mail Address: <u>sarah_chapman@oxy.com</u></p> <p>SURVEYOR CERTIFICATION</p> <p>I hereby certify that the well location shown on this plat was plotted from field notes of actual surveys made by me or under my supervision, and that the same is true and correct to the best of my belief.</p> <p>Date of Survey: <u>NOVEMBER 10, 2019</u></p> <p>Signature and Seal: <u>[Signature]</u> Professional Land Surveyor</p> <p>Certificate Number: <u>15079</u></p> <p>WO# 171110WL-b (Rev. B) (KA)</p>
--	---

Intent ☒ As Drilled ☐

API # 30-015-45087		
Operator Name: OXY USA Inc.	Property Name: OXBOW CG 17-8 Federal comm	Well Number 35H

Kick Off Point (KOP)

UL P	Section 17	Township 24S	Range 29E	Lot	Feet 50	From N/S South	Feet 990	From E/W east	County EDDY
Latitude 32.2104160					Longitude -104.0011624			NAD NAD83	

First Take Point (FTP)

UL P	Section 17	Township 24S	Range 29E	Lot	Feet 100	From N/S South	Feet 990	From E/W east	County EDDY
Latitude 32.2105584					Longitude -104.0011629			NAD NAD83	

Last Take Point (LTP)

UL A	Section 8	Township 24S	Range 29E	Lot	Feet 100	From N/S North	Feet 990	From E/W east	County EDDY
Latitude 32.2391275					Longitude -104.0012613			NAD NAD83	

Is this well the defining well for the Horizontal Spacing Unit? ☒Is this well an infill well? ☐

If infill is yes please provide API if available, Operator Name and well number for Defining well for Horizontal Spacing Unit.

API #		
Operator Name:	Property Name:	Well Number

KZ 06/29/2018

RECEIVED

JUN 28 2018

District I
1623 N. French Dr., Hobbs, NM 88240
Phone: (575) 391-6161 Fax: (575) 391-0770
District II
811 S. First St., Artesia, NM 88210
Phone: (575) 748-1283 Fax: (575) 748-9720
District III
1000 Ram Bluffs Road, Artesia, NM 88210
Phone: (505) 334-6179 Fax: (505) 334-6170
District IV
1220 S. St. Francis Dr., Santa Fe, NM 87505
Phone: (505) 476-3460 Fax: (505) 476-3462

State of New Mexico
Energy, Minerals & Natural Resources Department
OIL CONSERVATION DIVISION
1220 South St. Francis Dr.
Santa Fe, NM 87505

DISTRICT II-ARTESIA O.C.D. Form C-102
Revised August 1, 2011
Submit one copy to appropriate
District Office

☐ AMENDED REPORT

WELL LOCATION AND ACREAGE DEDICATION PLAT

API Number 30-015-45088	Pool Code 98220	Pool Name Purple Sage Wolfcamp
Property Code 321633	Property Name OXBOW CC "17-8" FEDERAL COM	Well Number 36H
OGRID No. 166946	Operator Name OXY USA INC.	Elevation 2927.1'

Surface Location

UL or lot no.	Section	Township	Range	Lot Idn	Feet from the	North/South line	Feet from the	East/West line	County
P	17	24 SOUTH	29 EAST, N.M.P.M.		601'	SOUTH	1201'	EAST	EDDY

Bottom Hole Location If Different From Surface

UL or lot no.	Section	Township	Range	Lot Idn	Feet from the	North/South line	Feet from the	East/West line	County
A	8	24 SOUTH	29 EAST, N.M.P.M.		180'	NORTH	500'	EAST	EDDY
Dedicated Acres 640	Joint or Infill Yes	Consolidation Code	Order No.						

No allowable will be assigned to this completion until all interests have been consolidated or a non-standard unit has been approved by the division.

	<p>OPERATOR CERTIFICATION</p> <p>I hereby certify that the information contained herein is true and complete to the best of my knowledge and belief and that the organization either owns a working interest or undivided mineral interest in the land including the proposed bottom hole location or has a right to drill the well at this location pursuant to a contract with an owner of such a mineral or working interest, or to a voluntary pooling agreement or a compulsory pooling order hereinafter entered by the division.</p> <p>Signature: <u>David Stewart</u> Date: <u>2/5/18</u></p> <p>Printed Name: <u>David Stewart</u></p> <p>E-mail Address: <u>david_stewart@oxy.com</u></p> <p>SURVEYOR CERTIFICATION</p> <p>I hereby certify that the well location shown on this plat was plotted from the original or actual surveys made by me or under my supervision, and that the same is true and correct to the best of my belief.</p> <p>Date of Survey: <u>NOVEMBER 10, 2017</u></p> <p>Signature and Seal of Professional Surveyor: <u>Terry J. Shaw</u> Certificate Number: <u>15079</u></p> <p>WD# 17111OWL-c (Rev. A) (KA)</p>
--	--

RW 7-3-18

NM OIL CONSERVATION
ARTESIA DISTRICT

District I
1625 N. French Dr., Hobbs, NM 88240
Phone: (575) 393-6161 Fax: (575) 393-9720
District II
411 S. First St., Artesia, NM 88210
Phone: (575) 744-1283 Fax: (575) 744-9720
District III
1000 Rio Grande Road, Aztec, NM 87410
Phone: (505) 334-6178 Fax: (505) 334-6170
District IV
1220 S. St. Francis Dr., Santa Fe, NM 87505
Phone: (505) 476-3450 Fax: (505) 476-3452

State of New Mexico
Energy, Minerals & Natural Resources Department
OIL CONSERVATION DIVISION
 1220 South St. Francis Dr.
 Santa Fe, NM 87505

OCT 16 2019
RECEIVED

Form C-102
 Revised August 1, 2011
 Submit one copy to appropriate
 District Office

☐ AMENDED REPORT

WELL LOCATION AND ACREAGE DEDICATION PLAT

API Number 30-015-46401	Pool Code 96220	Pool Name Purple Sage Wolfcamp
Property Code 221633	Property Name OXBOW CC "17-8" FEDERAL COM	Well Number 38H
OGRID No. 16694	Operator Name OXY USA INC.	Elevation 2936.3'

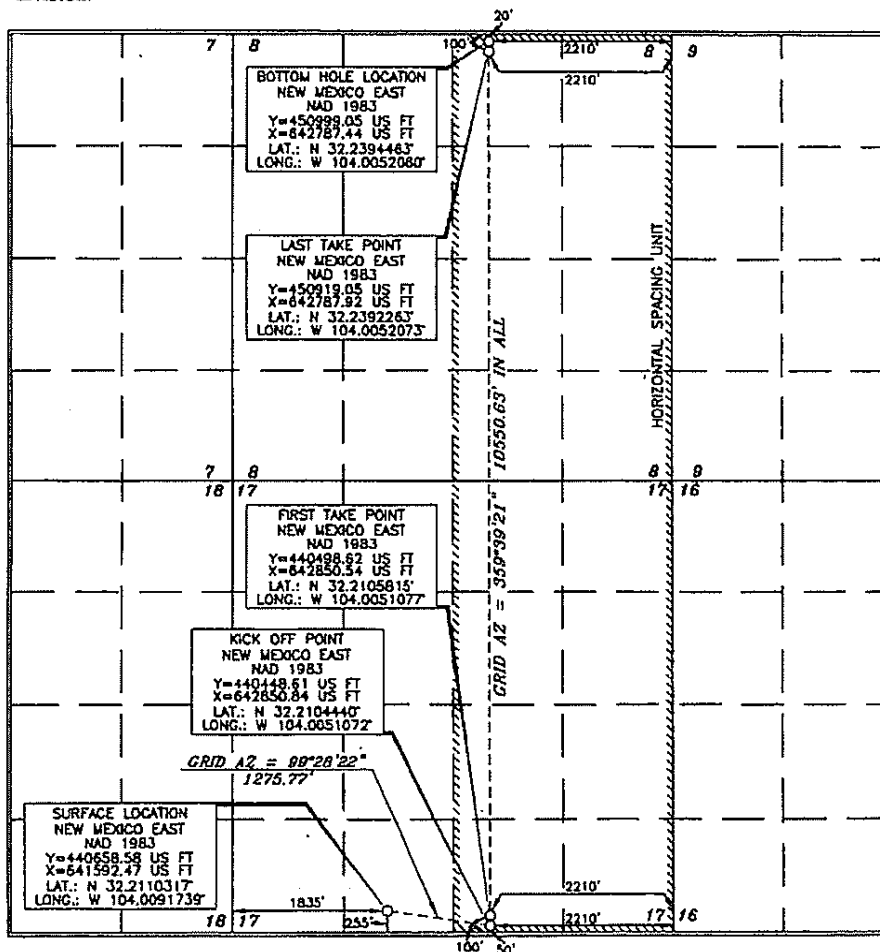
Surface Location

UL or lot no.	Section	Township	Range	Lot Idn	Feet from the	North/South line	Feet from the	East/West line	County
N	17	24 SOUTH	29 EAST, N.M.P.M.		255'	SOUTH	1835'	WEST	EDDY

Bottom Hole Location If Different From Surface

UL or lot no.	Section	Township	Range	Lot Idn	Feet from the	North/South line	Feet from the	East/West line	County
B	8	24 SOUTH	29 EAST, N.M.P.M.		20'	NORTH	2210'	EAST	EDDY
Dedicated Acres 640	Joint or Infill Y	Consolidation Code	Order No.						

No allowable will be assigned to this completion until all interests have been consolidated or a non-standard unit has been approved by the division.


OPERATOR CERTIFICATION

I hereby certify that the information contained herein is true and complete to the best of my knowledge and belief, and that this organization either owns a working interest or undivided mineral interest in the land including the proposed bottom hole location or has a right to drill this well at this location pursuant to a contract with an owner of such a mineral or working interest, or to a voluntary pooling agreement or a compulsory pooling order heretofore entered by the division.

Signature: *David Stewart* Date: **5/16/19**
 Printed Name: **David Stewart**
 E-mail Address: **David_Stewart@oxy.com**

SURVEYOR CERTIFICATION

I hereby certify that the well location shown on this plat was obtained from the notes of actual surveys made by me or under my supervision, and that the same is true and correct to the best of my belief.

Signature: *Terry J. Asch* Date: **NOVEMBER 26 2018**
 Printed Name: **TERRY J. ASCH**
 Professional Surveyor: **15079**
 Certificate Number: **15079**

WO# 181126WL-d (Rev. A) (KA)

R#10-18-19

NSL Required