

| | | | |
|-------------------|--------------|-----------|-----------------------|
| RECEIVED: 2/17/20 | REVIEWER: DM | TYPE: OLM | APP NO: pDM2006335757 |
|-------------------|--------------|-----------|-----------------------|

ABOVE THIS TABLE FOR OCD DIVISION USE ONLY

NEW MEXICO OIL CONSERVATION DIVISION
 - Geological & Engineering Bureau -
 1220 South St. Francis Drive, Santa Fe, NM 87505



ADMINISTRATIVE APPLICATION CHECKLIST

THIS CHECKLIST IS MANDATORY FOR ALL ADMINISTRATIVE APPLICATIONS FOR EXCEPTIONS TO DIVISION RULES AND REGULATIONS WHICH REQUIRE PROCESSING AT THE DIVISION LEVEL IN SANTA FE

| | |
|---|--|
| Applicant: COG Operating, LLC | OGRID Number: 229137 |
| Well Name: Myox 31 State Com 601H, 602H & 603H | API: 30-015-45948/30-015-45949/30-015-45950 |
| Pool: Purple Sage, Wolfcamp | Pool Code: 98220 |

SUBMIT ACCURATE AND COMPLETE INFORMATION REQUIRED TO PROCESS THE TYPE OF APPLICATION INDICATED BELOW

- 1) **TYPE OF APPLICATION:** Check those which apply for [A]
- A. Location – Spacing Unit – Simultaneous Dedication
☐ NSL ☐ NSP (PROJECT AREA) ☐ NSP (PRORATION UNIT) ☐ SD
- B. Check one only for [I] or [II]
- [I] Commingling – Storage – Measurement
☐ DHC ☐ CTB ☐ PLC ☐ PC ☐ OLS ☒ OLM
- [II] Injection – Disposal – Pressure Increase – Enhanced Oil Recovery
☐ WFX ☐ PMX ☐ SWD ☐ IPI ☐ EOR ☐ PPR

2) **NOTIFICATION REQUIRED TO:** Check those which apply.

- A. ☐ Offset operators or lease holders
 B. ☒ Royalty, overriding royalty owners, revenue owners
 C. ☐ Application requires published notice
 D. ☐ Notification and/or concurrent approval by SLO
 E. ☐ Notification and/or concurrent approval by BLM
 F. ☐ Surface owner
 G. ☐ For all of the above, proof of notification or publication is attached, and/or,
 H. ☐ No notice required

FOR OCD ONLY

- ☐ Notice Complete
☐ Application Content Complete

- 3) **CERTIFICATION:** I hereby certify that the information submitted with this application for administrative approval is **accurate** and **complete** to the best of my knowledge. I also understand that **no action** will be taken on this application until the required information and notifications are submitted to the Division.

Note: Statement must be completed by an individual with managerial and/or supervisory capacity.

Jeanette Barron

Print or Type Name

Signature

2/17/20
 Date

575-746-6974

Phone Number

jbarron@concho.com
 e-mail Address



February 17, 2020

Attn: Dean McClure
NM Oil Conservation Division
1220 South Saint Francis Drive
Santa Fe, New Mexico 87505

Re: Application for Administrative Approval
Off-lease Measurement – Oil Only

Dear Mr. McClure,

COG Operating LLC, respectfully requests approval for off-lease measurement – Oil only for the following wells:

Myox 31 State Com 601H
API# 30-015-45948
Purple Sage; Wolfcamp
Ut. A, Sec. 31-T25S-R28E
Eddy County, NM

Myox 31 State Com 602H
API# 30-015-45949
Purple Sage; Wolfcamp
Ut. A, Sec. 31-T25S-R28E
Eddy County, NM

Myox 31 State Com 603H
API# 30-015-45950
Purple Sage; Wolfcamp
Ut. A, Sec. 31-T25S-R28E
Eddy County, NM

The oil production from these wells may be transported by truck to either the Red Hills Offload Station, located in Unit O, Section 4-T26S-R32E, or the Jal Offload Station, located in Unit D, Section 4-T26S-R37E, Lea County in the event the CTB on lease is over capacity or in the case of battery or pipeline repairs. Oil will remain segregated and will be measured by lact meter when offloading at the Offload Stations.

Notifications have been sent to all working interest owners

Please see the enclosed Administrative Application Checklist, C-107-B Application for Off Lease Measurement, plats for referenced wells, site facility diagram, maps with lease boundaries showing wells and facility locations.

Thank you for your attention to this matter. If you have questions or need further information, please email me at jbarron@concho.com or call 575.748.6974.

Sincerely,
A handwritten signature in black ink that reads "Jeanette Barron".
Jeanette Barron
Regulatory Technician II

CORPORATE ADDRESS

One Concho Center | 600 West Illinois Avenue | Midland, Texas 79701
P 432 683 7443 | F 432 683 7441

ARTESIA WEST OFFICE

2208 Main Street | Artesia, New Mexico 88210
P 575 748 6940 | F 575 746 2096

District I
1625 N. French Drive, Hobbs, NM 88240
District II
811 S. First St., Artesia, NM 88210
District III
1000 Rio Brazos Road, Aztec, NM 87410
District IV
1220 S. St Francis Dr. Santa Fe, NM
87505

State of New Mexico
Energy, Minerals and Natural Resources Department

Form C-107-B
Revised August 1, 2011

OIL CONSERVATION DIVISION
1220 S. St Francis Drive
Santa Fe, New Mexico 87505

Submit the original
application to the Santa Fe
office with one copy to the
appropriate District Office.

APPLICATION FOR SURFACE COMMINGLING (DIVERSE OWNERSHIP)

OPERATOR NAME: COG Operating LLC

OPERATOR ADDRESS: 2208 W Main Street, Artesia, New Mexico 88210

APPLICATION TYPE:

☐ Pool Commingling ☐ Lease Commingling ☐ Pool and Lease Commingling ☒ Off-Lease Storage and Measurement (Only if not Surface Commingled)

LEASE TYPE: ☐ Fee ☒ State ☐ Federal

Is this an Amendment to existing Order? ☐ Yes ☐ No If "Yes", please include the appropriate Order No. _____
Have the Bureau of Land Management (BLM) and State Land office (SLO) been notified in writing of the proposed commingling
☐ Yes ☐ No

(A) POOL COMMINGLING

Please attach sheets with the following information

| (1) Pool Names and Codes | Gravities / BTU of Non-Commingled Production | Calculated Gravities / BTU of Commingled Production | | Calculated Value of Commingled Production | Volumes |
|--------------------------|--|---|--|---|---------|
| | | | | | |
| | | | | | |
| | | | | | |
| | | | | | |
| | | | | | |

- (2) Are any wells producing at top allowables? ☐ Yes ☐ No
(3) Has all interest owners been notified by certified mail of the proposed commingling? ☐ Yes ☐ No
(4) Measurement type: ☐ Metering ☐ Other (Specify)
(5) Will commingling decrease the value of production? ☐ Yes ☐ No If "yes", describe why commingling should be approved

(B) LEASE COMMINGLING

Please attach sheets with the following information

- (1) Pool Name and Code.
(2) Is all production from same source of supply? ☐ Yes ☐ No
(3) Has all interest owners been notified by certified mail of the proposed commingling? ☐ Yes ☐ No
(4) Measurement type: ☐ Metering ☐ Other (Specify)

(C) POOL and LEASE COMMINGLING

Please attach sheets with the following information

- (1) Complete Sections A and E.

(D) OFF-LEASE STORAGE and MEASUREMENT

Please attach sheets with the following information

- (1) Is all production from same source of supply? ☒ Yes ☐ No
(2) Include proof of notice to all interest owners.

(E) ADDITIONAL INFORMATION (for all application types)

Please attach sheets with the following information

- (1) A schematic diagram of facility, including legal location.
(2) A plat with lease boundaries showing all well and facility locations. Include lease numbers if Federal or State lands are involved.
(3) Lease Names, Lease and Well Numbers, and API Numbers.

I hereby certify that the information above is true and complete to the best of my knowledge and belief.

SIGNATURE: Jeanette Barron

TITLE: Regulatory Technician II

DATE: 2/17/20

TYPE OR PRINT NAME Jeanette Barron TELEPHONE NO.: 575.748.6974

E-MAIL ADDRESS: jbarron@concho.com

District I
1625 N. French Dr., Hobbs, NM 88240
Phone (575) 393-6161 Fax: (575) 393-0720
District II
811 S. First St., Artesia, NM 88210
Phone (575) 748-1283 Fax: (575) 748-9720
District III
1000 Rio Brazos Road, Aztec, NM 87410
Phone (505) 334-6178 Fax: (505) 334-6170
District IV
1220 S. St. Francis Dr., Santa Fe, NM 87505
Phone (505) 476-3460 Fax: (505) 476-3462

State of New Mexico
Energy, Minerals & Natural Resources Department
OIL CONSERVATION DIVISION
1220 South St. Francis Dr.
Santa Fe, NM 87505

Form C-1C
Revised August 1, 20
Submit one copy to appropriate
District Office
☒ AMENDED REPORT
As Drilled

WELL LOCATION AND ACREAGE DEDICATION PLAT

| | | | | | |
|-------------------------------------|--|--|--|---|------------------------------|
| 1 API Number 30-015-45948 | | 2 Pool Code 98220 | | 3 Pool Name Purple Sage; Wolfcamp | |
| 4 Property Code 308744 | | 5 Property Name MYOX 31 STATE COM | | | 6 Well Number 601H |
| 7 GRID NO. 229137 | | 8 Operator Name COG OPERATING, LLC | | | 9 Elevation 3013' |

10 Surface Location

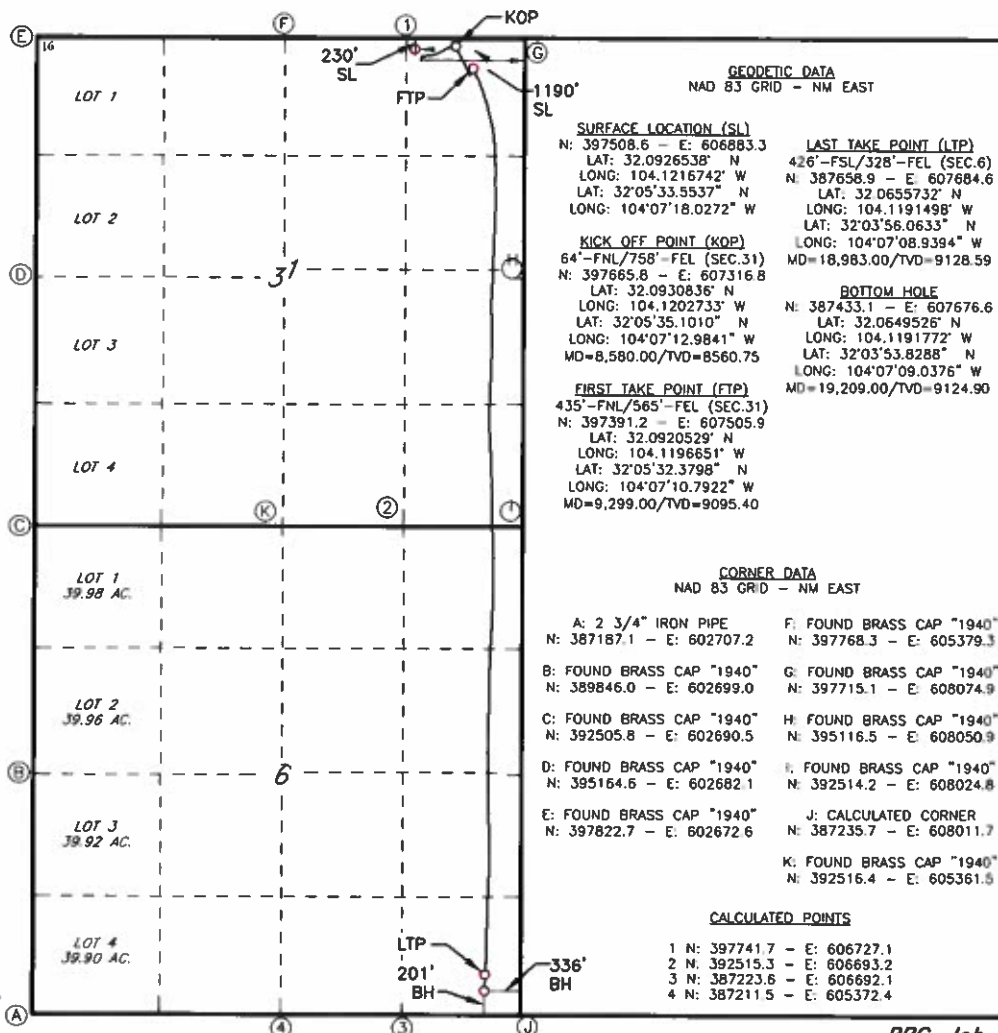
| UL or lot no. | Section | Township | Range | Lot Idn | Feet from the | North/South line | Feet From the | East/West line | County |
|---------------|-----------|------------|------------|---------|---------------|------------------|---------------|----------------|-------------|
| A | 31 | 25S | 28E | | 230 | NORTH | 1190 | EAST | EDDY |

11 Bottom Hole Location If Different From Surface

| UL or lot no. | Section | Township | Range | Lot Idn | Feet from the | North/South line | Feet from the | East/West line | County |
|---------------|----------|------------|------------|---------|---------------|------------------|---------------|----------------|-------------|
| P | 6 | 26S | 28E | | 201 | SOUTH | 336 | EAST | EDDY |

| | | | |
|----------------------------------|--------------------|-----------------------|--------------|
| 12 Dedicated Acres 640 | 13 Joint or Infill | 14 Consolidation Code | 15 Order No. |
|----------------------------------|--------------------|-----------------------|--------------|

No allowable will be assigned to this completion until all interest have been consolidated or a non-standard unit has been approved by the division.



17 OPERATOR CERTIFICATION

I hereby certify that the information contained herein is true and complete to the best of my knowledge and belief, and that this organization either owns a working interest or unleased mineral interest in the land including the proposed bottom hole location or has a right to drill this well at this location pursuant to a contract with an owner of such a mineral or working interest, or to a voluntary pooling agreement or a compulsory pooling order heretofore entered by the division

Jeanette Barron 2/17/20
Signature Date
Jeanette Barron
Printed Name
jbarron@concho.com
E-mail Address

18 SURVEYOR CERTIFICATION

I hereby certify that the well location shown on this plat was plotted from field notes of actual surveys made by me or under my supervision, and that the same is true and correct to the best of my belief.

03-12-2019

Date of Survey

Signature and Seal of Professional Surveyor



19680

Certificate Number

1-09-2020 Rev: AsDrill

RRC-Job No.: LS9030364AD

Intent ☐ As Drilled ☒

API #
30-015-45948

| | | |
|-------------------------------------|-------------------------------------|---------------------|
| Operator Name: COG Operating LLC | Property Name: Myox 31 State Com | Well Number 601H |
|-------------------------------------|-------------------------------------|---------------------|

Kick Off Point (KOP)

| | | | | | | | | | |
|------------------------|---------------|-----------------|--------------|-----|--------------------------|-------------------|-------------|------------------|----------------|
| UL A | Section 31 | Township 25S | Range 28E | Lot | Feet 64 | From N/S North | Feet 758 | From E/W East | County Eddy |
| Latitude 32.0930836 | | | | | Longitude 104.1202733 | | | | NAD 83 |

First Take Point (FTP)

| | | | | | | | | | |
|------------------------|---------------|-----------------|--------------|-----|--------------------------|-------------------|-------------|------------------|----------------|
| UL A | Section 31 | Township 25S | Range 28E | Lot | Feet 435 | From N/S North | Feet 565 | From E/W East | County Eddy |
| Latitude 32.0920529 | | | | | Longitude 104.1196651 | | | | NAD 83 |

Last Take Point (LTP)

| | | | | | | | | | |
|------------------------|--------------|-----------------|--------------|-----|--------------------------|-------------------|-------------|------------------|----------------|
| UL P | Section 6 | Township 26S | Range 28E | Lot | Feet 426 | From N/S South | Feet 328 | From E/W East | County Eddy |
| Latitude 32.0655732 | | | | | Longitude 104.1191498 | | | | NAD |

Is this well the defining well for the Horizontal Spacing Unit? ☒

Is this well an infill well? ☐

If infill is yes please provide API if available, Operator Name and well number for Defining well for Horizontal Spacing Unit.

API #

| | | |
|----------------|----------------|-------------|
| Operator Name: | Property Name: | Well Number |
|----------------|----------------|-------------|

KZ 06/29/2018

District I
1625 N French Dr., Hobbs, NM 88240
Phone: (575) 393-6161 Fax: (575) 393-0720
District II
811 S. First St., Artesia, NM 88210
Phone: (575) 748-1283 Fax: (575) 748-9720
District III
1000 Rio Brazos Road, Aztec, NM 87410
Phone: (505) 334-6178 Fax: (505) 334-6170
District IV
1220 S. St. Francis Dr., Santa Fe, NM 87505
Phone: (505) 476-3460 Fax: (505) 476-3462

State of New Mexico
Energy, Minerals & Natural Resources Department
OIL CONSERVATION DIVISION
1220 South St. Francis Dr.
Santa Fe, NM 87505

Form C-11
Revised August 1, 20
Submit one copy to appropriate
District Office

☒ AMENDED REPORT
As Drilled

WELL LOCATION AND ACREAGE DEDICATION PLAT

| | | | | | |
|------------------------------|--|---------------------------------------|--|--------------------------------------|-----------------------|
| 1 API Number 30-015-45949 | | 2 Pool Code 98220 | | 3 Pool Name Purple Sage; Wolfcamp | |
| 4 Property Code 308744 | | 5 Property Name MYOX 31 STATE COM | | | 6 Well Number 602H |
| 7 GRID NO. 229137 | | 8 Operator Name COG OPERATING, LLC | | | 9 Elevation 3013' |

10 Surface Location

| UL or lot no. | Section | Township | Range | Lot Idn | Feet from the | North/South line | Feet from the | East/West line | County |
|---------------|---------|----------|-------|---------|---------------|------------------|---------------|----------------|--------|
| A | 31 | 25S | 28E | | 230 | NORTH | 1220 | EAST | EDDY |

11 Bottom Hole Location If Different From Surface

| UL or lot no. | Section | Township | Range | Lot Idn | Feet from the | North/South line | Feet from the | East/West line | County |
|---------------|---------|----------|-------|---------|---------------|------------------|---------------|----------------|--------|
| P | 6 | 26S | 28E | | 202 | SOUTH | 1218 | EAST | EDDY |

| | | | |
|---------------------------|--------------------|-----------------------|--------------|
| 12 Dedicated Acres 640 | 13 Joint or Infill | 14 Consolidation Code | 15 Order No. |
|---------------------------|--------------------|-----------------------|--------------|

No allowable will be assigned to this completion until all interest have been consolidated or a non-standard unit has been approved by the division.

| | | |
|--|--|---|
| | <p>GEODETIC DATA NAD 83 GRID - NM EAST</p> <p>SURFACE LOCATION (SL) N: 397509.2 - E: 606853.3 LAT: 32.0926556° N LONG: 104.1217711° W LAT: 32°05'33.5603" N LONG: 104°07'18.3759" W</p> <p>KICK OFF POINT (KOP) 91'-FNL/1287'-FEL (SEC.31) N: 397649.1 - E: 606788.0 LAT: 32.0930405° N LONG: 104.1219811° W LAT: 32°05'34.9460" N LONG: 104°07'19.1318" W MD=8,582.00/TVD=8576.94</p> <p>FIRST TAKE POINT (FTP) 562'-FNL/1274'-FEL (SEC.31) N: 397178.0 - E: 606795.9 LAT: 32.0917455° N LONG: 104.1219584° W LAT: 32°05'30.2837" N LONG: 104°07'19.0507" W MD=9,333.00/TVD=9102.60</p> <p>CORNER DATA NAD 83 GRID - NM EAST</p> <p>A: 2 3/4" IRON PIPE N: 387187.1 - E: 602707.2</p> <p>B: FOUND BRASS CAP "1940" N: 389846.0 - E: 602699.0</p> <p>C: FOUND BRASS CAP "1940" N: 392505.8 - E: 602690.5</p> <p>D: FOUND BRASS CAP "1940" N: 395164.6 - E: 602682.1</p> <p>E: FOUND BRASS CAP "1940" N: 397822.7 - E: 602672.6</p> <p>F: FOUND BRASS CAP "1940" N: 397768.3 - E: 605379.3</p> <p>G: FOUND BRASS CAP "1940" N: 397715.1 - E: 608074.9</p> <p>H: FOUND BRASS CAP "1940" N: 395116.5 - E: 608050.9</p> <p>I: FOUND BRASS CAP "1940" N: 392514.2 - E: 608024.8</p> <p>J: CALCULATED CORNER N: 387235.7 - E: 608011.7</p> <p>K: FOUND BRASS CAP "1940" N: 392516.4 - E: 605361.5</p> <p>CALCULATED POINTS 1 N: 397741.7 - E: 606727.1 2 N: 392515.3 - E: 606693.2 3 N: 387223.6 - E: 606692.1 4 N: 387211.5 - E: 605372.4</p> | <p>17 OPERATOR CERTIFICATION I hereby certify that the information contained herein is true and complete to the best of my knowledge and belief, and that this organization either owns a working interest or unleased mineral interest in the land including the proposed bottom hole location or has a right to drill this well at this location pursuant to a contract with an owner of such a mineral or working interest, or to a voluntary pooling agreement or a compulsory pooling order heretofore entered by the division</p> <p>Signature: <u>Jeannette Barron</u> Date: <u>2/17/20</u> Printed Name: <u>Jeannette Barron</u> E-mail Address: <u>jbarron@concho.com</u></p> |
| | <p>18 SURVEYOR CERTIFICATION I hereby certify that the well location shown on this plat was plotted from field notes of actual surveys made by me or under my supervision, and that the same is true and correct to the best of my belief.</p> <p>03-12-2019 Date of Survey</p> <p>Signature and Seal of Professional Surveyor: <u>Robert M. Howett</u> 19680 Certificate Number</p> <p>1-09-2020 Rev: As Drilled</p> | <p>19680 Certificate Number</p> <p>1-09-2020 Rev: As Drilled</p> |

RRC-Job No.: LS9030363AD

Intent ☐ As Drilled ☒

| | | |
|-------------------------------------|-------------------------------------|---------------------|
| API # 30-015-45949 | | |
| Operator Name: COG Operating LLC | Property Name: Myox 31 State Com | Well Number 602H |

Kick Off Point (KOP)

| | | | | | | | | | |
|------------------------|---------------|-----------------|--------------|-----|--------------------------|-------------------|--------------|------------------|----------------|
| UL A | Section 31 | Township 25S | Range 28E | Lot | Feet 91 | From N/S North | Feet 1287 | From E/W East | County Eddy |
| Latitude 32.0930406 | | | | | Longitude 104.1219811 | | | NAD 83 | |

First Take Point (FTP)

| | | | | | | | | | |
|------------------------|---------------|-----------------|--------------|-----|--------------------------|-------------------|--------------|------------------|----------------|
| UL A | Section 31 | Township 25S | Range 28E | Lot | Feet 562 | From N/S North | Feet 1274 | From E/W East | County Eddy |
| Latitude 32.0917455 | | | | | Longitude 104.1219584 | | | NAD 83 | |

Last Take Point (LTP)

| | | | | | | | | | |
|------------------------|--------------|-----------------|--------------|-----|--------------------------|-------------------|--------------|------------------|----------------|
| UL P | Section 6 | Township 26S | Range 28E | Lot | Feet 415 | From N/S South | Feet 1231 | From E/W East | County Eddy |
| Latitude 32.0655249 | | | | | Longitude 104.1220643 | | | NAD | |

Is this well the defining well for the Horizontal Spacing Unit? ☐ NoIs this well an infill well? ☐ Yes

If infill is yes please provide API if available, Operator Name and well number for Defining well for Horizontal Spacing Unit.

| | | |
|-------------------------------------|-------------------------------------|---------------------|
| API # 30-015-45948 | | |
| Operator Name: COG Operating LLC | Property Name: Myox 31 State Com | Well Number 601H |

KZ 06/29/2018

District I
1625 N. French Dr., Hobbs, NM 88240
Phone: (575) 393-6161 Fax: (575) 393-0720
District II
811 S. First St., Artesia, NM 88210
Phone: (575) 748-1283 Fax: (575) 748-9720
District III
1000 Rio Brazos Road, Aztec, NM 87410
Phone: (505) 334-6178 Fax: (505) 334-6170
District IV
1220 S. St. Francis Dr., Santa Fe, NM 87505
Phone: (505) 476-3460 Fax: (505) 476-3462

State of New Mexico
Energy, Minerals & Natural Resources Department
OIL CONSERVATION DIVISION
1220 South St. Francis Dr.
Santa Fe, NM 87505

Form C-10
Revised August 1, 20
Submit one copy to appropriate
District Office

☒ AMENDED REPORT
As Drilled

WELL LOCATION AND ACREAGE DEDICATION PLAT

| | | |
|--|---|--|
| ¹ API Number 30-015-45950 | ² Pool Code 98220 | ³ Pool Name Purple Sage; Wolfcamp |
| ⁴ Property Code 308744 | ⁵ Property Name MYOX 31 STATE COM | |
| ⁷ GRID NO 229137 | ⁸ Operator Name COG OPERATING, LLC | ⁶ Well Number 603H |
| | | ⁹ Elevation 3014' |

¹⁰ Surface Location

| UL or lot no. | Section | Township | Range | Lot Idn | Feet from the | North/South line | Feet From the | East/West line | County |
|---------------|-----------|------------|------------|---------|---------------|------------------|---------------|----------------|-------------|
| A | 31 | 25S | 28E | | 230 | NORTH | 1250 | EAST | EDDY |

¹¹ Bottom Hole Location If Different From Surface

| UL or lot no. | Section | Township | Range | Lot Idn | Feet from the | North/South line | Feet from the | East/West line | County |
|---------------|----------|------------|------------|---------|---------------|------------------|---------------|----------------|-------------|
| 0 | 6 | 26S | 28E | | 202 | SOUTH | 2193 | EAST | EDDY |

| | | | |
|---|-------------------------------|----------------------------------|-------------------------|
| ¹² Dedicated Acres 640 | ¹³ Joint or Infill | ¹⁴ Consolidation Code | ¹⁵ Order No. |
|---|-------------------------------|----------------------------------|-------------------------|

No allowable will be assigned to this completion until all interest have been consolidated or a non-standard unit has been approved by the division.

GEODETIC DATA
NAD 83 GRID - NM EAST

SURFACE LOCATION (SL)
N: 397509.8 - E: 606823.3
LAT: 32.0926575° N
LONG: 104.1218679° W
LAT: 32.05'33.5668" N
LONG: 104.07'18.7246" W

KICK OFF POINT (KOP)
133'-FNL/1587'-FEL (SEC.31)
N: 397615.0 - E: 606387.7
LAT: 32.0929490° N
LONG: 104.1232739° W
LAT: 32.05'34.6163" N
LONG: 104.07'23.7861" W
MD=8,550.00/TVD=8525.01

FIRST TAKE POINT (FTP)
495'-FNL/1911'-FEL (SEC.31)
N: 397258.3 - E: 606160.3
LAT: 32.0919696° N
LONG: 104.1240104° W
LAT: 32.05'31.0907" N
LONG: 104.07'26.4377" W
MD=9,308.00/TVD=9094.74

LAST TAKE POINT (LTP)
323'-FSL/2192'-FEL (SEC.6)
N: 387538.2 - E: 605821.2
LAT: 32.0652515° N
LONG: 104.1251680° W
LAT: 32.03'54.9049" N
LONG: 104.07'30.5977" W
MD=19,097.00/TVD=9183.64

BOTTOM HOLE
N: 387417.3 - E: 605819.6
LAT: 32.0649189° N
LONG: 104.1251718° W
LAT: 32.03'53.7084" N
LONG: 104.07'30.6190" W
MD=19,218.00/TVD=9185.79

CORNER DATA
NAD 83 GRID - NM EAST

A: 2 3/4" IRON PIPE
N: 387187.1 - E: 602707.2

B: FOUND BRASS CAP "1940"
N: 389846.0 - E: 602699.0

C: FOUND BRASS CAP "1940"
N: 392505.8 - E: 602690.5

D: FOUND BRASS CAP "1940"
N: 395164.6 - E: 602682.1

E: FOUND BRASS CAP "1940"
N: 397822.7 - E: 602672.6

F: FOUND BRASS CAP "1940"
N: 397768.3 - E: 605379.3

G: FOUND BRASS CAP "1940"
N: 397715.1 - E: 608074.9

H: FOUND BRASS CAP "1940"
N: 395116.5 - E: 608050.9

I: FOUND BRASS CAP "1940"
N: 392514.2 - E: 608024.8

J: CALCULATED CORNER
N: 387235.7 - E: 608011.7

K: FOUND BRASS CAP "1940"
N: 392516.4 - E: 605361.5

CALCULATED POINTS

1 N: 397741.7 - E: 606727.1
2 N: 392515.3 - E: 606693.2
3 N: 387223.6 - E: 606692.1
4 N: 387211.5 - E: 606372.4

¹⁷ OPERATOR CERTIFICATION
I hereby certify that the information contained herein is true and complete to the best of my knowledge and belief, and that this organization either owns a working interest or unleased mineral interest in the land including the proposed bottom hole location or has a right to drill this well at this location pursuant to a contract with an owner of such a mineral or working interest, or to a voluntary pooling agreement or a compulsory pooling order heretofore entered by the division.

Jeanette Barron 2/17/20
Signature Date
Jeanette Barron
Printed Name
jbarron@concho.com
E-mail Address

¹⁸ SURVEYOR CERTIFICATION
I hereby certify that the well location shown on this plat was plotted from field notes of actual surveys made by me or under my supervision, and that the same is true and correct to the best of my belief.

03-12-2019
Date of Survey

Signature and Seal of Professional Surveyor

19680
Certificate Number

1-10-2020 Rev: AsDrill

RRC-Job No.: LS9030362AD

Intent ☐ As Drilled ☒

| | | |
|-------------------------------------|-------------------------------------|---------------------|
| API # 30-015-45950 | | |
| Operator Name: COG Operating LLC | Property Name: Myox 31 State Com | Well Number 603H |

Kick Off Point (KOP)

| UL B | Section 31 | Township 25S | Range 28E | Lot | Feet 133 | From N/S North | Feet 1687 | From E/W East | County Eddy |
|------------------------|---------------|-----------------|--------------|-----|--------------------------|-------------------|--------------|------------------|----------------|
| Latitude 32.0929490 | | | | | Longitude 104.1232739 | | | NAD 83 | |

First Take Point (FTP)

| UL B | Section 31 | Township 25S | Range 28E | Lot | Feet 495 | From N/S North | Feet 1911 | From E/W East | County Eddy |
|------------------------|---------------|-----------------|--------------|-----|--------------------------|-------------------|--------------|------------------|----------------|
| Latitude 32.0919696 | | | | | Longitude 104.1240104 | | | NAD 83 | |

Last Take Point (LTP)

| UL O | Section 6 | Township 26S | Range 28E | Lot | Feet 323 | From N/S South | Feet 2192 | From E/W East | County Eddy |
|------------------------|--------------|-----------------|--------------|-----|--------------------------|-------------------|--------------|------------------|----------------|
| Latitude 32.0652515 | | | | | Longitude 104.1251660 | | | NAD | |

Is this well the defining well for the Horizontal Spacing Unit? ☐ NoIs this well an infill well? ☐ Yes

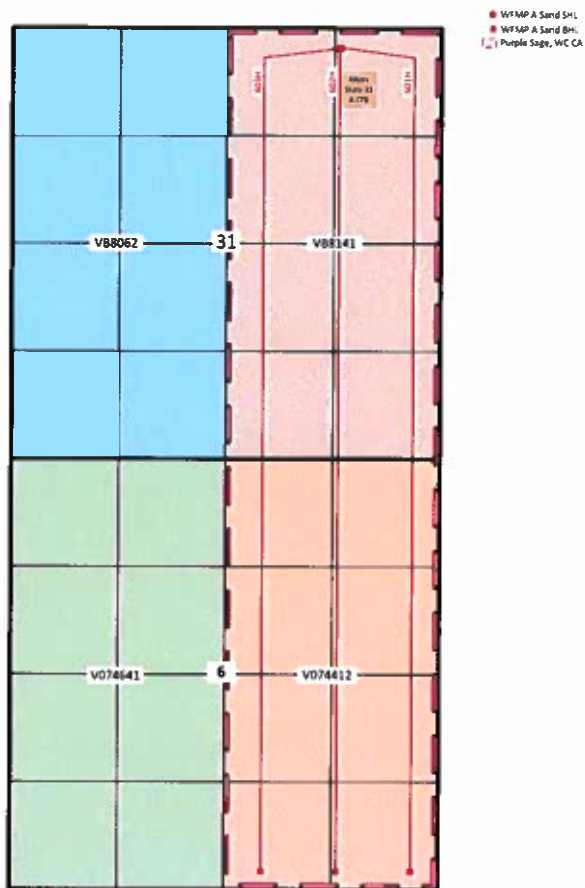
If infill is yes please provide API if available, Operator Name and well number for Defining well for Horizontal Spacing Unit.

| | | |
|-------------------------------------|-------------------------------------|---------------------|
| API # 30-015-45948 | | |
| Operator Name: COG Operating LLC | Property Name: Myox 31 State Com | Well Number 601H |

KZ 06/29/2018

04.16.19 JB
12.02.19 JB
DWW-12/18/19

MYOX 31 State Com Wells



SEC 31-T25S-R28E
SEC 6-T26S-R28E
Eddy County, NM

Myox 31 State Com 601H, 602H & 603H

Red Hills and Jal Offload Station Map

Myox 31 State Com
601H, 602H & 603H

| | | | | | |
|----|----|----|----|----|----|
| 6 | 5 | 4 | 3 | 2 | 1 |
| 7 | 8 | 9 | 10 | 11 | 12 |
| 18 | 17 | 16 | 15 | 14 | 13 |
| 19 | 20 | 21 | 22 | 23 | 24 |
| 30 | 29 | 28 | 27 | 26 | 25 |
| 31 | 32 | 33 | 34 | 35 | 36 |

Red Hills Offload
Station
Lea County, NM

| | | | | | |
|----|----|----|----|----|----|
| 6 | 5 | 4 | 3 | 2 | 1 |
| 7 | 8 | 9 | 10 | 11 | 12 |
| 18 | 17 | 16 | 15 | 14 | 13 |
| 19 | 20 | 21 | 22 | 23 | 24 |
| 30 | 29 | 28 | 27 | 26 | 25 |
| 31 | 32 | 33 | 34 | 35 | 36 |

Jal Offload Station
Lea County, NM

| | | | | | |
|----|----|----|----|----|----|
| 6 | 5 | 4 | 3 | 2 | 1 |
| 7 | 8 | 9 | 10 | 11 | 12 |
| 18 | 17 | 16 | 15 | 14 | 13 |
| 19 | 20 | 21 | 22 | 23 | 24 |
| 30 | 29 | 28 | 27 | 26 | 25 |
| 31 | 32 | 33 | 34 | 35 | 36 |



February 12, 2020

RE: Myox 31 601H-603H
Off Lease Measurement

To Whom It May Concern,

In regards to the above referenced wells, the revenue owners are identical. As defined in NMAC 19.15.12.7.B, identical ownership means leases or pools have the same working, royalty and overriding royalty owners in exactly the same percentages.

Thanks,



Travis Macha
Landman

| Myox 31 State Com 601H, 602H & 603H | | | | | | | | | |
|-------------------------------------|----------|---------------------|---------------------------|---------------|-------|---------|------------------------------|-----------|--|
| Date Sent | Initials | Name | Address | City | State | ZipCode | Certified Return Receipt No. | Delivered | |
| 02.17.20 | JB | EOG Resources, Inc. | 5509 Champions Blvd. | Midland | TX | 79706 | 7018 1830 0000 7074 1016 | | |
| 02.17.20 | JB | CRP XII, LLC | 1101 N Broadway Suite 300 | Oklahoma City | OK | 73103 | 7018 1830 0000 7074 1023 | | |