

N2QLN-191205-C-107B 658

Revised March 23, 2017

RECEIVED: 12/5/19	REVIEWER:	TYPE: PLC	APP NO: pDM2006651707
-------------------	-----------	-----------	-----------------------

ABOVE THIS TABLE FOR OCD DIVISION USE ONLY

NEW MEXICO OIL CONSERVATION DIVISION
 - Geological & Engineering Bureau -
 1220 South St. Francis Drive, Santa Fe, NM 87505

**ADMINISTRATIVE APPLICATION CHECKLIST**

THIS CHECKLIST IS MANDATORY FOR ALL ADMINISTRATIVE APPLICATIONS FOR EXCEPTIONS TO DIVISION RULES AND
 REGULATIONS WHICH REQUIRE PROCESSING AT THE DIVISION LEVEL IN SANTA FE

Applicant: OXY USA INC **OGRID Number:** 16696 **TI**
Well Name: SALT FLAT 20 29 FEDERAL COM #031H & MULTIPLE **API:** 30-015-45080 & MULTIPLE
Pool: PURPLE SAGE; WOLFCAMP & PIERCE CROSSING; BONE SPRING **Pool Code:** 98220 & 50371

**SUBMIT ACCURATE AND COMPLETE INFORMATION REQUIRED TO PROCESS THE TYPE OF APPLICATION
 INDICATED BELOW**

1) TYPE OF APPLICATION: Check those which apply for (A)

A. Location - Spacing Unit - Simultaneous Dedication

☐ NSL☐ NSP (PROJECT AREA)☐ NSP (PRORATION UNIT)☐ SD

B. Check one only for (I) or (II)

(I) Commingling - Storage - Measurement

☐ DHC☐ CTB☐ PLC☒ PC☐ OLS☐ OLM

(II) Injection - Disposal - Pressure Increase - Enhanced Oil Recovery

☐ WFX☐ PMX☐ SWD☐ IPI☐ EOR☐ PPR**2) NOTIFICATION REQUIRED TO:** Check those which apply.A. ☐ Offset operators or lease holdersB. ☐ Royalty, overriding royalty owners, revenue ownersC. ☐ Application requires published noticeD. ☐ Notification and/or concurrent approval by SLOE. ☒ Notification and/or concurrent approval by BLMF. ☐ Surface ownerG. ☐ For all of the above, proof of notification or publication is attached, and/or,H. ☒ No notice required**FOR OCD ONLY**☐

Notice Complete

☐Application
Content
Complete

3) CERTIFICATION: I hereby certify that the information submitted with this application for administrative approval is **accurate** and **complete** to the best of my knowledge. I also understand that **no action** will be taken on this application until the required information and notifications are submitted to the Division.

Note: Statement must be completed by an individual with managerial and/or supervisory capacity.

Kathleen Mowery

Print or Type Name

12/5/19

Date

713-366-5109

Phone Number

Kathleen Mowery

Signature

Kathleen.Mowery@oxy.com

e-mail Address

Submit 1 Copy To Appropriate District Office

District I – (575) 393-6161
1625 N. French Dr., Hobbs, NM 88240
District II – (575) 748-1283
811 S. First St., Artesia, NM 88210
District III – (505) 334-6178
1000 Rio Brazos Rd., Aztec, NM 87410
District IV – (505) 476-3460
1220 S. St. Francis Dr., Santa Fe, NM 87505

State of New Mexico
Energy, Minerals and Natural Resources

OIL CONSERVATION DIVISION
1220 South St. Francis Dr.
Santa Fe, NM 87505

Form C-103
Revised July 18, 2013

WELL API NO. 30-015-45080
5. Indicate Type of Lease STATE <input type="checkbox"/> FEE <input type="checkbox"/>
6. State Oil & Gas Lease No.
7. Lease Name or Unit Agreement Name SALT FLAT 20 29 FEDERAL COM
8. Well Number #031H
9. OGRID Number 16696
10. Pool name or Wildcat PURPLE SAGE; WOLFCAMP

<p>SUNDRY NOTICES AND REPORTS ON WELLS (DO NOT USE THIS FORM FOR PROPOSALS TO DRILL OR TO DEEPEN OR PLUG BACK TO A DIFFERENT RESERVOIR. USE "APPLICATION FOR PERMIT" (FORM C-101) FOR SUCH PROPOSALS.)</p>	
<p>1. Type of Well: Oil Well <input checked="" type="checkbox"/> Gas Well <input type="checkbox"/> Other <input type="checkbox"/></p>	
<p>2. Name of Operator OXY USA INC</p>	
<p>3. Address of Operator 5 GREENWAY PLAZA SUITE 110, HOUSTON, TX, 77046</p>	
<p>4. Well Location Unit Letter <u>M</u>: <u>252</u> feet from the <u>SOUTH</u> line and <u>1222</u> feet from the <u>WEST</u> line Section <u>17</u> Township <u>24S</u> Range <u>29E</u> NMPM County <u>EDDY</u></p>	
<p>11. Elevation (Show whether DR, RKB, RT, GR, etc.)</p>	

12. Check Appropriate Box to Indicate Nature of Notice, Report or Other Data

NOTICE OF INTENTION TO:	SUBSEQUENT REPORT OF:
PERFORM REMEDIAL WORK <input type="checkbox"/>	REMEDIAL WORK <input type="checkbox"/>
TEMPORARILY ABANDON <input type="checkbox"/>	ALTERING CASING <input type="checkbox"/>
PULL OR ALTER CASING <input type="checkbox"/>	COMMENCE DRILLING OPNS. <input type="checkbox"/>
DOWNHOLE COMMINGLE <input type="checkbox"/>	P AND A <input type="checkbox"/>
CLOSED-LOOP SYSTEM <input type="checkbox"/>	CASING/CEMENT JOB <input type="checkbox"/>
OTHER: POOL COMMINGLE <input checked="" type="checkbox"/>	OTHER: <input type="checkbox"/>

13. Describe proposed or completed operations. (Clearly state all pertinent details, and give pertinent dates, including estimated date of starting any proposed work). SEE RULE 19.15.7.14 NMAC. For Multiple Completions: Attach wellbore diagram of proposed completion or recompletion.

OXY USA INC requests approval of a surface pool commingle for Train #1 at the Salt Flat CTB (C-20-24S-29E) for the wells listed below and future wells within the same pools and leases. Wells with identical CA boundaries will flow to the same facility train. Production from the trains will be kept separate and not commingled. Detailed information is attached.

Well Name	API	Pool
Salt Flat 20 29 Federal Com #031H	30-015-45080	PURPLE SAGE; WOLFCAMP
Salt Flat 20 29 Federal Com #032H	30-015-45081	PURPLE SAGE; WOLFCAMP
Salt Flat 20 29 Federal Com #033H	30-015-45082	PIERCE CROSSING; BONE SPRING
Salt Flat 20 29 Federal Com #037H	30-015-46369	PURPLE SAGE; WOLFCAMP

Spud Date: Rig Release Date:

I hereby certify that the information above is true and complete to the best of my knowledge and belief.

SIGNATURE Kathleen Mowery TITLE Regulatory Engineer DATE 12-5-19
Type or print name Kathleen Mowery E-mail address: Kathleen_Mowery@oxy.com PHONE: 713-346-5109
For State Use Only

APPROVED BY: _____ TITLE _____ DATE _____
Conditions of Approval (if any): _____

APPLICATION FOR POOL COMMINGLE**Commingle proposal for the Salt Flat CTB – Train #1**

OXY USA INC respectfully requests approval of a pool commingle for Train #1 at the Salt Flat CTB (Lat 32.208183, Long -104.010796, C- 20-24S-29E). Salt Flat 20 29 Federal Com #031H, Salt Flat 20 29 Federal Com #032H, Salt Flat 20 29 Federal Com #033H, and Salt Flat 20 29 Federal Com #037H will produce to Train #1 and require a pool commingle. Production from the four Trains will be kept separate and only commingled downstream of the LACT used for the BLM's royalty payments.

POOL COMMINGLE - TRAIN #1

POOLS: PIERCE CROSSING; BONE SPRING (50371) & PURPLE SAGE; WOLFCAMP (98220)

COM AGREEMENTS PENDING

33.33% BLM ROYALTY 12.5% (NMNM 017224) & 33.33% BLM ROYALTY 12.5% (NMNM 094651) & 33.33% BLM ROYALTY 12.5% (NMNM 053229)

FOR BLM INTEREST ALLOCATION OF 12.25%

Well Name	API	Surface Location	Pool	POOL CODE	EST DATE ONLINE	Est. Oil (bpd)	Est. Gravity API	Est. Gas (MSCFD)	Est. BTU/cf	Est. Water (bpd)
Salt Flat 20 29 Federal Com #031H	30-015-45080	M-17-24S-29E	PURPLE SAGE; WOLFCAMP	98220	Feb-20	1098	44	2605	1300	2935
Salt Flat 20 29 Federal Com #032H	30-015-45081	M-17-24S-29E	PURPLE SAGE; WOLFCAMP	98220	Feb-20	1098	44	2605	1300	2935
Salt Flat 20 29 Federal Com #033H	30-015-45082	M-17-24S-29E	PIERCE CROSSING; BONE SPRING	50371	Feb-20	1098	44	2605	1300	2935
Salt Flat 20 29 Federal Com #037H	30-015-46369	D-06-24S-29E	PURPLE SAGE; WOLFCAMP	98220	Feb-20	1098	44	2605	1300	2935

Process Description:

For each Facility Train, production is sent through a 10' X 40' three-phase production separator. Oil production flows through a line heater then to an 8' X 20' heater treater before being sent to a 4' vapor recovery tower. Oil then flows to two oil storage tanks before being pumped through one of two LACT meters S/N*, which will serve as the FMPs for BLM royalty payments. Oil from all four trains then combines and routes to two oil storage tanks before being pumped through one of three LACT meters S/N*, which will serve as Oxy's sales point. A truck load FMP will be set up at the Facility for use as back-up in the event of a LACT meter failure.

Oil and gas production will be allocated back to each well based on well test. For testing purposes, each Train will be equipped with one permanent 8' x 20' three-phase test separator. Each test vessel will be equipped with oil turbine meters (S/N*), gas orifice meters (S/N*) and water turbine meters.

All wells will be tested daily prior to Range 1 of decline, and will be tested at least three times per month during Range 1 of decline. When Range 2 decline is started, the wells will be tested at least twice per month. Wells will be tested at least once per month when Range 3 of decline is started, as specified in Hearing Order R-14299.

*Meter number to be submitted upon installation. The oil and gas meters will be calibrated on a regular basis per API, NMOCD and BLM specifications.

Gas production from all wells at each Train will be combined after the production and test separators. It will then flow through an orifice meter S/N*, which will serve as the gas FMP for that Train for the purpose of BLM royalty payment, then sent to one of two 5' x 10' gas scrubbers, and then sent to sales.

All water from the Salt Flat CTB will be sent to the Cedar Canyon Water Disposal System.

*Meter number to be submitted upon installation. The oil and gas meters will be calibrated on a regular basis per API, NMOCD and BLM specifications.

Additional Application Components:

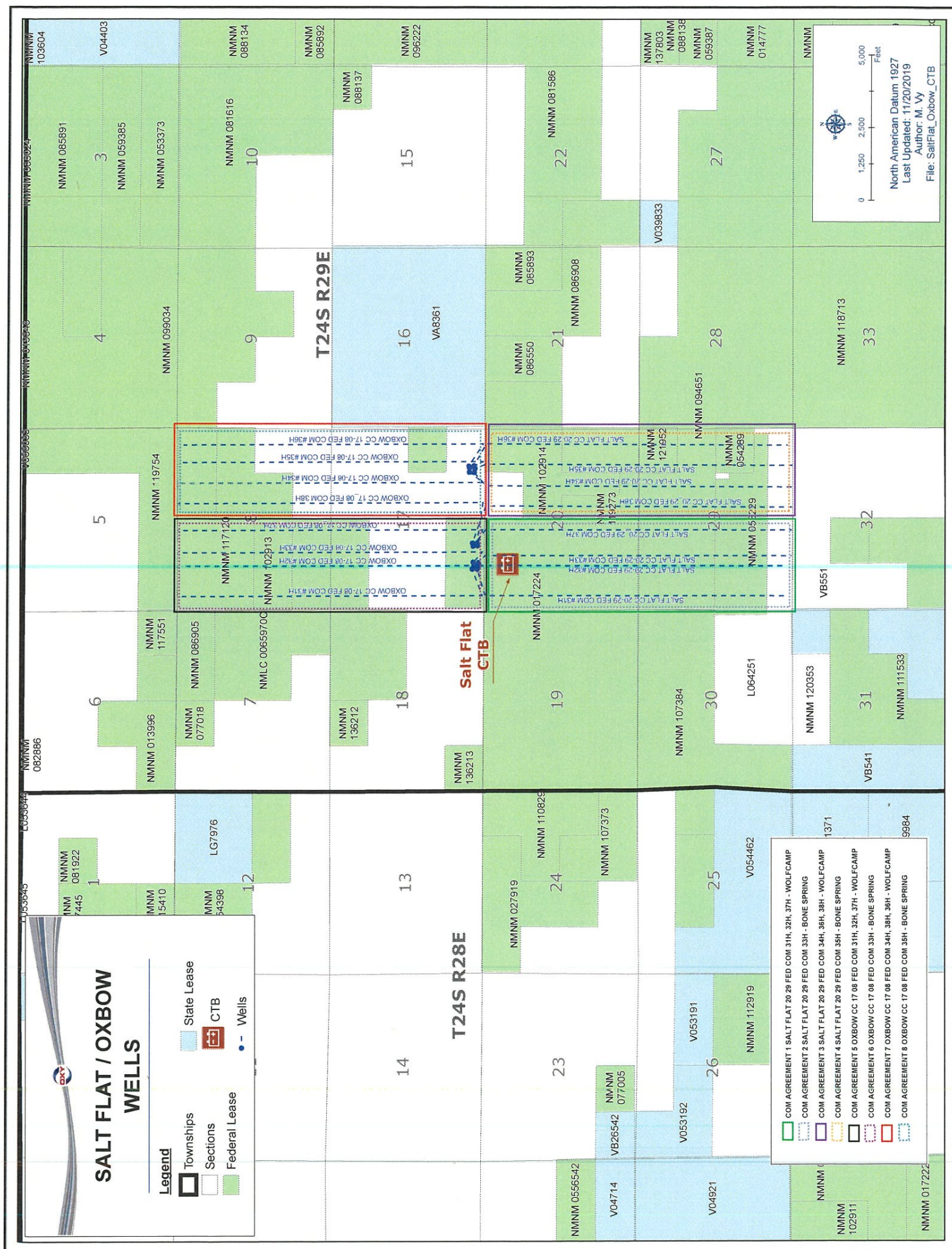
The flow of production is shown in detail on the enclosed facility diagram. Also enclosed is a map detailing the lease boundaries, well and battery locations.

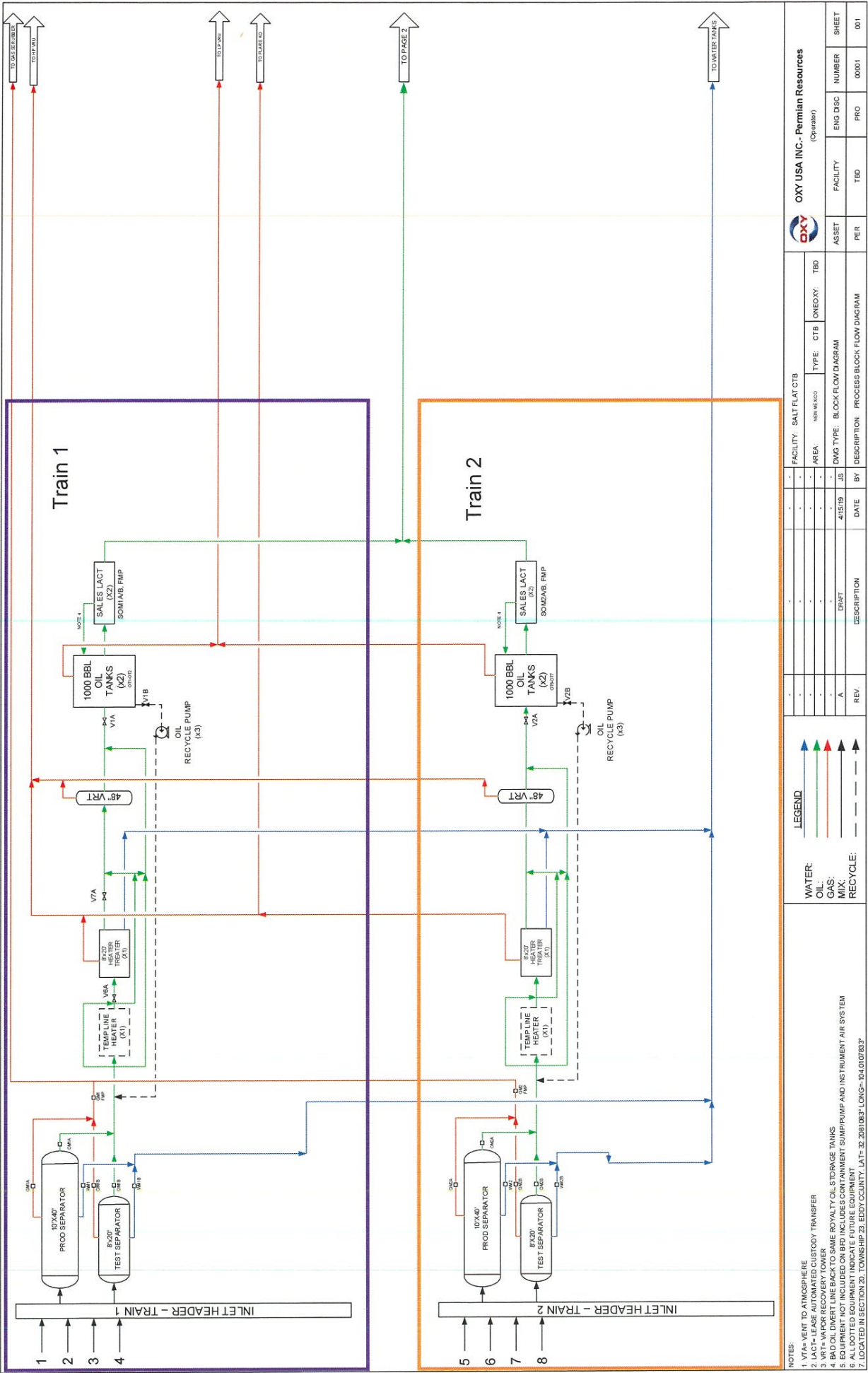
All wells in each train have identical ownership therefore notification was not required.

Pursuant to Statewide rule 19.15.12.10(C)(4)(g) OXY USA INC requests the option to include additional pools or leases within the defined parameters set forth in the Order for future additions.

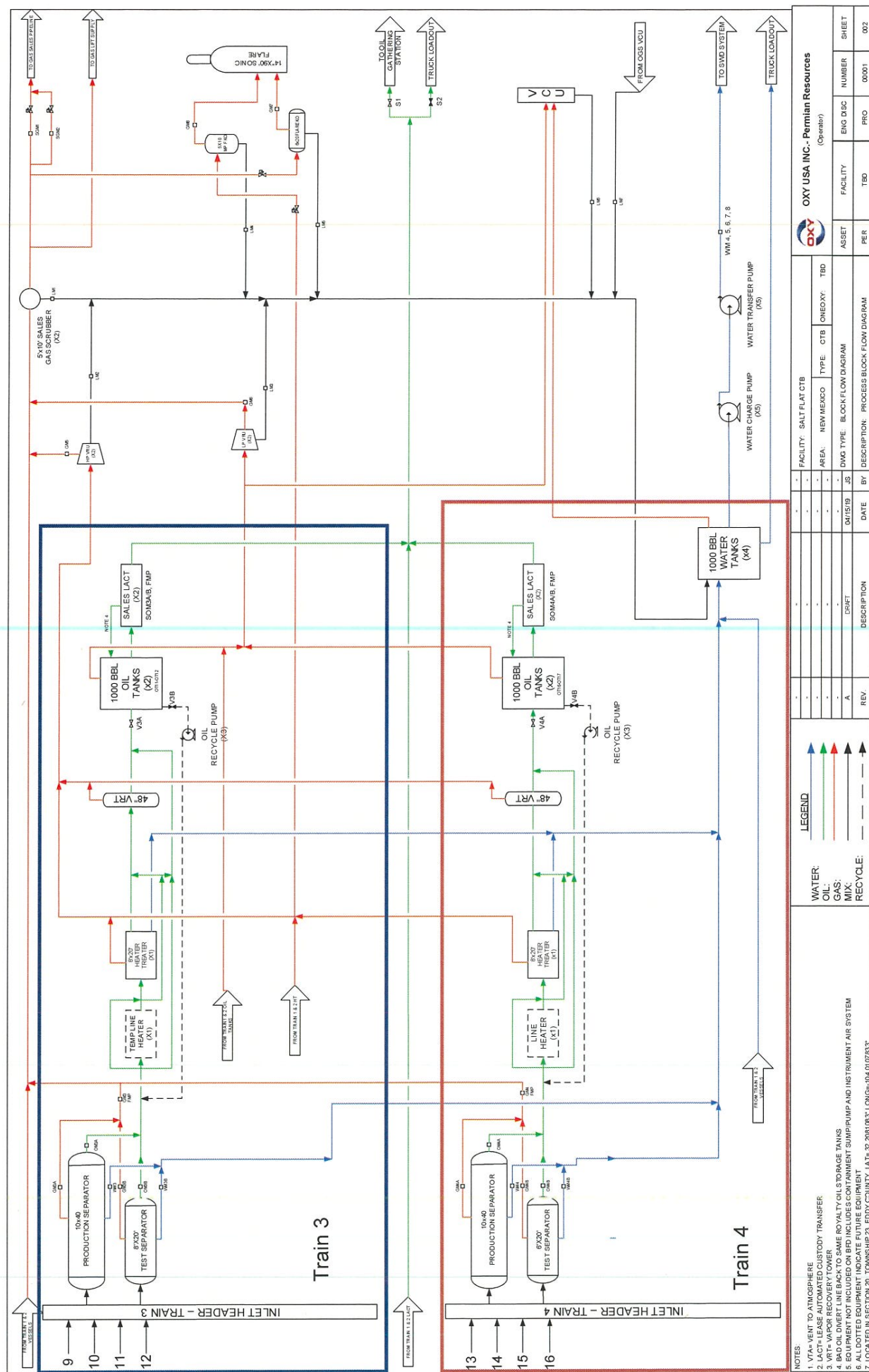
Commingling this production is the most effective means of producing the reserves. The surface commingle application will be submitted separately for approval per NMOCD and BLM regulations.

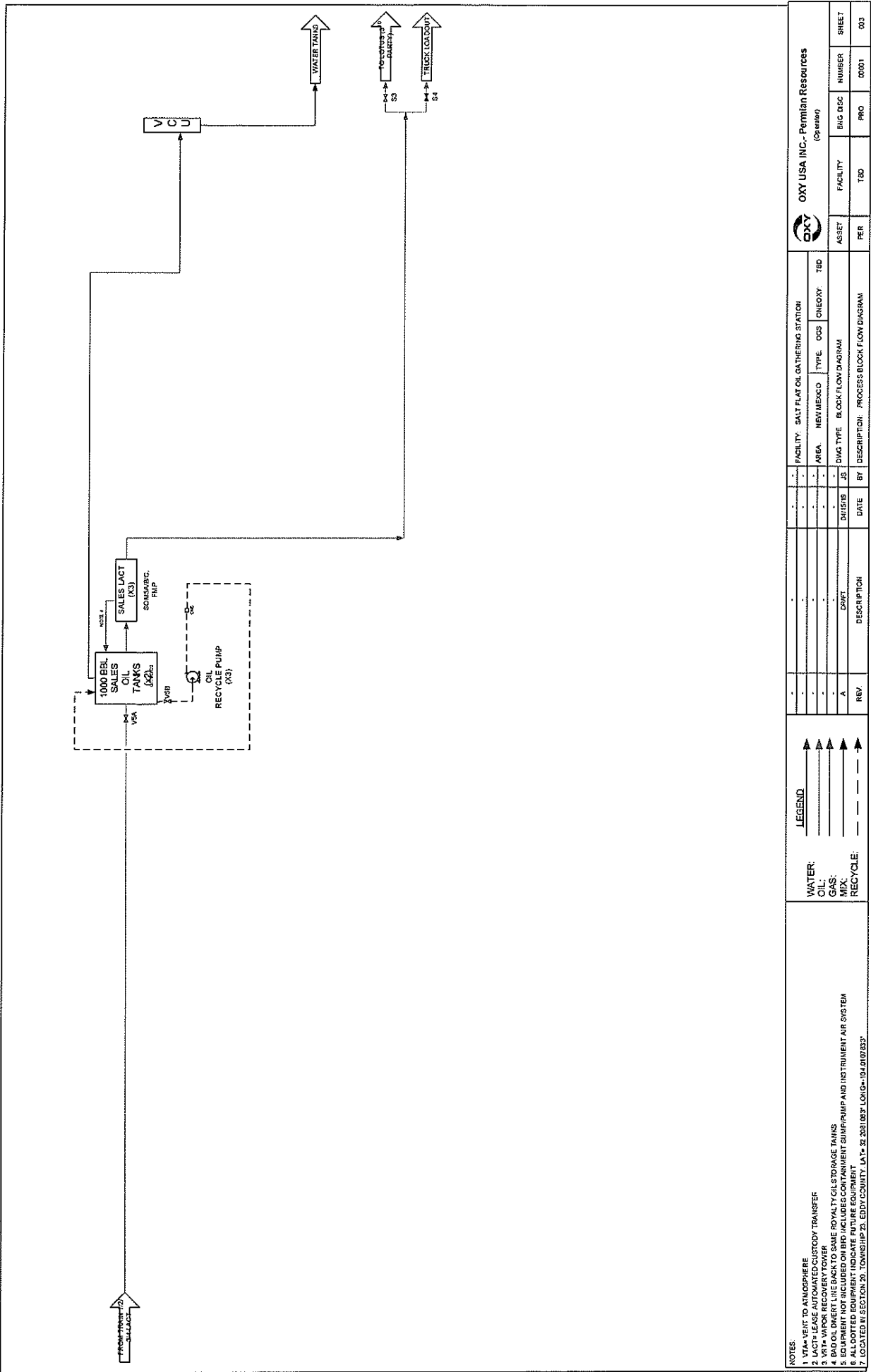
OXY USA INC understands the requested approval will not constitute the granting of any right-of-way or construction rights not granted by the lease instrument.





										OXY USA INC. - Permian Resources (Operator)									
										OXY									





OXY USA INC. - Permian Resources (Operator)									
OXY									
FACILITY: SALT FLAT OIL GATHERING STATION									
TBD									
AREA: NEW MEXICO									
TBD									
DAYS TYPE: BLOCK FLOW DIAGRAM									
TBD									
DATE: 12/5/19									
TBD									
BY: [Signature]									
TBD									
DESCRIPTION: PROCESS BLOCK FLOW DIAGRAM									
TBD									
REV: A									
TBD									
OXY									
FACILITY: SALT FLAT OIL GATHERING STATION									
TBD									
AREA: NEW MEXICO									
TBD									
DAYS TYPE: BLOCK FLOW DIAGRAM									
TBD									
DATE: 12/5/19									
TBD									
BY: [Signature]									
TBD									
DESCRIPTION: PROCESS BLOCK FLOW DIAGRAM									
TBD									
REV: A									
TBD									
OXY									
FACILITY: SALT FLAT OIL GATHERING STATION									
TBD									
AREA: NEW MEXICO									
TBD									
DAYS TYPE: BLOCK FLOW DIAGRAM									
TBD									
DATE: 12/5/19									
TBD									
BY: [Signature]									
TBD									
DESCRIPTION: PROCESS BLOCK FLOW DIAGRAM									
TBD									
REV: A									
TBD									
OXY									
FACILITY: SALT FLAT OIL GATHERING STATION									
TBD									
AREA: NEW MEXICO									
TBD									
DAYS TYPE: BLOCK FLOW DIAGRAM									
TBD									
DATE: 12/5/19									
TBD									
BY: [Signature]									
TBD									
DESCRIPTION: PROCESS BLOCK FLOW DIAGRAM									
TBD									
REV: A									
TBD									
OXY									
FACILITY: SALT FLAT OIL GATHERING STATION									
TBD									
AREA: NEW MEXICO									
TBD									
DAYS TYPE: BLOCK FLOW DIAGRAM									
TBD									
DATE: 12/5/19									
TBD									
BY: [Signature]									
TBD									
DESCRIPTION: PROCESS BLOCK FLOW DIAGRAM									
TBD									
REV: A									
TBD									
OXY									
FACILITY: SALT FLAT OIL GATHERING STATION									
TBD									
AREA: NEW MEXICO									
TBD									
DAYS TYPE: BLOCK FLOW DIAGRAM									
TBD									
DATE: 12/5/19									
TBD									
BY: [Signature]									
TBD									
DESCRIPTION: PROCESS BLOCK FLOW DIAGRAM									
TBD									
REV: A									
TBD									
OXY									
FACILITY: SALT FLAT OIL GATHERING STATION									
TBD									
AREA: NEW MEXICO									
TBD									
DAYS TYPE: BLOCK FLOW DIAGRAM									
TBD									
DATE: 12/5/19									
TBD									
BY: [Signature]									
TBD									
DESCRIPTION: PROCESS BLOCK FLOW DIAGRAM									
TBD									
REV: A									
TBD									
OXY									
FACILITY: SALT FLAT OIL GATHERING STATION									
TBD									
AREA: NEW MEXICO									
TBD									
DAYS TYPE: BLOCK FLOW DIAGRAM									
TBD									
DATE: 12/5/19									
TBD									
BY: [Signature]									
TBD									
DESCRIPTION: PROCESS BLOCK FLOW DIAGRAM									
TBD									
REV: A									
TBD									
OXY									
FACILITY: SALT FLAT OIL GATHERING STATION									
TBD									
AREA: NEW MEXICO									
TBD									
DAYS TYPE: BLOCK FLOW DIAGRAM									
TBD									
DATE: 12/5/19									
TBD									
BY: [Signature]									
TBD									
DESCRIPTION: PROCESS BLOCK FLOW DIAGRAM									
TBD									
REV: A									
TBD									
OXY									
FACILITY: SALT FLAT OIL GATHERING STATION									
TBD									
AREA: NEW MEXICO									
TBD									
DAYS TYPE: BLOCK FLOW DIAGRAM									
TBD									
DATE: 12/5/19									
TBD									
BY: [Signature]									
TBD									
DESCRIPTION: PROCESS BLOCK FLOW DIAGRAM									
TBD									
REV: A									
TBD									
OXY									
FACILITY: SALT FLAT OIL GATHERING STATION									
TBD									
AREA: NEW MEXICO									
TBD									
DAYS TYPE: BLOCK FLOW DIAGRAM									
TBD									
DATE: 12/5/19									
TBD									
BY: [Signature]									
TBD									
DESCRIPTION: PROCESS BLOCK FLOW DIAGRAM									
TBD									
REV: A									
TBD									
OXY									
FACILITY: SALT FLAT OIL GATHERING STATION									
TBD									
AREA: NEW MEXICO									
TBD									
DAYS TYPE: BLOCK FLOW DIAGRAM									
TBD									
DATE: 12/5/19									
TBD									
BY: [Signature]									
TBD									
DESCRIPTION: PROCESS BLOCK FLOW DIAGRAM									
TBD									
REV: A									
TBD									
OXY									
FACILITY: SALT FLAT OIL GATHERING STATION									
TBD									
AREA: NEW MEXICO									
TBD									
DAYS TYPE: BLOCK FLOW DIAGRAM									
TBD									
DATE: 12/5/19									
TBD									
BY: [Signature]									
TBD									
DESCRIPTION: PROCESS BLOCK FLOW DIAGRAM									
TBD									
REV: A									
TBD									
OXY									
FACILITY: SALT FLAT OIL GATHERING STATION									
TBD									
AREA: NEW MEXICO									
TBD									
DAYS TYPE: BLOCK FLOW DIAGRAM									
TBD									
DATE: 12/5/19									
TBD									
BY: [Signature]									
TBD									
DESCRIPTION: PROCESS BLOCK FLOW DIAGRAM									
TBD									
REV: A									
TBD									
OXY									
FACILITY: SALT FLAT OIL GATHERING STATION									
TBD									
AREA: NEW MEXICO									
TBD									
DAYS TYPE: BLOCK FLOW DIAGRAM									
TBD									
DATE: 12/5/19									
TBD									
BY: [Signature]									
TBD									
DESCRIPTION: PROCESS BLOCK FLOW DIAGRAM									
TBD									
REV: A									
TBD									
OXY									
FACILITY: SALT FLAT OIL GATHERING STATION									
TBD									
AREA: NEW MEXICO									
TBD									
DAYS TYPE: BLOCK FLOW DIAGRAM									
TBD									
DATE: 12/5/19									
TBD									
BY: [Signature]									
TBD									
DESCRIPTION: PROCESS BLOCK FLOW DIAGRAM									
TBD									
REV: A									
TBD									
OXY									
FACILITY: SALT FLAT OIL GATHERING STATION									
TBD									
AREA: NEW MEXICO									
TBD									
DAYS TYPE: BLOCK FLOW DIAGRAM									
TBD									
DATE: 12/5/19									
TBD									
BY: [Signature]									
TBD									
DESCRIPTION: PROCESS BLOCK FLOW DIAGRAM									
TBD									
REV: A									
TBD									
OXY									
FACILITY: SALT FLAT OIL GATHERING STATION									
TBD									
AREA: NEW MEXICO									
TBD									
DAYS TYPE: BLOCK FLOW DIAGRAM									
TBD									
DATE: 12/5/19									
TBD									
BY: [Signature]									
TBD									
DESCRIPTION: PROCESS BLOCK FLOW DIAGRAM									
TBD									
REV: A									
TBD									
OXY									
FACILITY: SALT FLAT OIL GATHERING STATION									
TBD									
AREA: NEW MEXICO									
TBD									
DAYS TYPE: BLOCK FLOW DIAGRAM									
TBD									
DATE: 12/5/19									
TBD									
BY: [Signature]									
TBD									
DESCRIPTION: PROCESS BLOCK FLOW DIAGRAM									
TBD									
REV: A									
TBD									
OXY									
FACILITY: SALT FLAT OIL GATHERING STATION									
TBD									
AREA: NEW MEXICO									
TBD									
DAYS TYPE: BLOCK FLOW DIAGRAM									
TBD									
DATE: 12/5/19									
TBD									
BY: [Signature]									
TBD									
DESCRIPTION: PROCESS BLOCK FLOW DIAGRAM									
TBD									
REV: A									
TBD									
OXY									
FACILITY: SALT FLAT OIL GATHERING STATION									
TBD									
AREA: NEW MEXICO									
TBD									
DAYS TYPE: BLOCK FLOW DIAGRAM									
TBD									
DATE: 12/5/19									
TBD									
BY: [Signature]									
TBD									
DESCRIPTION: PROCESS BLOCK FLOW DIAGRAM									
TBD									
REV: A									
TBD									
OXY									
FACILITY: SALT FLAT OIL GATHERING STATION									
TBD									
AREA: NEW MEXICO									
TBD									
DAYS TYPE: BLOCK FLOW DIAGRAM									
TBD									
DATE: 12/5/19									
TBD									
BY: [Signature]									
TBD									
DESCRIPTION: PROCESS BLOCK FLOW DIAGRAM									
TBD									
REV: A									
TBD									
OXY									
FACILITY: SALT FLAT OIL GATHERING STATION									
TBD									
AREA: NEW MEXICO									
TBD									
DAYS TYPE: BLOCK FLOW DIAGRAM									
TBD									
DATE: 12/5/19									
TBD									
BY: [Signature]									
TBD									
DESCRIPTION: PROCESS BLOCK FLOW DIAGRAM									
TBD									
REV: A									
TBD									
OXY									
FACILITY: SALT FLAT OIL GATHERING STATION									
TBD									
AREA: NEW MEXICO									
TBD									
DAYS TYPE: BLOCK FLOW DIAGRAM									
TBD									
DATE: 12/5/19									
TBD									
BY: [Signature]									
TBD									
DESCRIPTION: PROCESS BLOCK FLOW DIAGRAM									
TBD									
REV: A									
TBD									
OXY									
FACILITY: SALT FLAT OIL GATHERING STATION									
TBD									
AREA: NEW MEXICO									
TBD									
DAYS TYPE: BLOCK FLOW DIAGRAM									
TBD									
DATE: 12/5/19									
TBD									
BY: [Signature]									
TBD									
DESCRIPTION: PROCESS BLOCK FLOW DIAGRAM									
TBD									
REV: A									
TBD									
OXY									
FACILITY: SALT FLAT OIL GATHERING STATION									
TBD									
AREA: NEW MEXICO									
TBD									
DAYS TYPE: BLOCK FLOW DIAGRAM									
TBD									
DATE: 12/5/19									
TBD									
BY: [Signature]									
TBD									
DESCRIPTION: PROCESS BLOCK FLOW DIAGRAM									
TBD									
REV: A									
TBD									
OXY									
FACILITY: SALT FLAT OIL GATHERING STATION									
TBD									
AREA: NEW MEXICO									
TBD									
DAYS TYPE: BLOCK FLOW DIAGRAM									
TBD									
DATE: 12/5/19									
TBD									
BY: [Signature]									
TBD									
DESCRIPTION: PROCESS BLOCK FLOW DIAGRAM									
TBD									
REV: A									
TBD									
OXY									
FACILITY: SALT FLAT OIL GATHERING STATION									
TBD									
AREA: NEW MEXICO									
TBD									
DAYS TYPE: BLOCK FLOW DIAGRAM									
TBD									
DATE: 12/5/19									
TBD									
BY: [Signature]									
TBD									
DESCRIPTION: PROCESS BLOCK FLOW DIAGRAM									
TBD									
REV: A									
TBD									
OXY									
FACILITY: SALT FLAT OIL GATHERING STATION									
TBD									
AREA: NEW MEXICO									
TBD									
DAYS TYPE: BLOCK FLOW DIAGRAM									
TBD									
DATE: 12/5/19									
TBD									
BY: [Signature]									
TBD									
DESCRIPTION: PROCESS BLOCK FLOW DIAGRAM									
TBD									
REV: A									
TBD									
OXY									
FACILITY: SALT FLAT OIL GATHERING STATION									
TBD									
AREA: NEW MEXICO									
TBD									
DAYS TYPE: BLOCK FLOW DIAGRAM									
TBD									
DATE: 12/5/19									
TBD									
BY: [Signature]									
TBD									
DESCRIPTION: PROCESS BLOCK FLOW DIAGRAM									
TBD									
REV: A									
TBD									
OXY									
FACILITY: SALT FLAT OIL GATHERING STATION									
TBD									
AREA: NEW MEXICO									
TBD									
DAYS TYPE: BLOCK FLOW DIAGRAM									
TBD									
DATE: 12/5/19									
TBD									
BY: [Signature]									
TBD									
DESCRIPTION: PROCESS BLOCK FLOW DIAGRAM									
TBD									
REV: A									
TBD									
OXY									
FACILITY: SALT FLAT OIL GATHERING STATION									
TBD									
AREA: NEW MEXICO									
TBD									
DAYS TYPE: BLOCK FLOW DIAGRAM									
TBD									
DATE: 12/5/19									
TBD									
BY: [Signature]									
TBD									
DESCRIPTION: PROCESS BLOCK FLOW DIAGRAM									
TBD									
REV: A									
TBD									
OXY									
FACILITY: SALT FLAT OIL GATHERING STATION									
TBD									
AREA: NEW MEXICO									
TBD									
DAYS TYPE: BLOCK FLOW DIAGRAM									
TBD									
DATE: 12/5/19									
TBD									
BY: [Signature]									
TBD									
DESCRIPTION: PROCESS BLOCK FLOW DIAGRAM									
TBD									
REV: A									
TBD									
OXY									
FACILITY: SALT FLAT OIL GATHERING STATION									
TBD									
AREA: NEW MEXICO									
TBD									
DAYS TYPE: BLOCK FLOW DIAGRAM									
TBD									
DATE: 12/5/19									
TBD									
BY: [Signature]									
TBD									
DESCRIPTION: PROCESS BLOCK FLOW DIAGRAM									
TBD									
REV: A									
TBD									
OXY									
FACILITY: SALT FLAT OIL GATHERING STATION									
TBD									
AREA: NEW MEXICO									
TBD									
DAYS TYPE: BLOCK FLOW DIAGRAM									
TBD									
DATE: 12/5/19									
TBD									
BY: [Signature]									
TBD									
DESCRIPTION: PROCESS BLOCK FLOW DIAGRAM									
TBD									
REV: A									
TBD									
OXY									
FACILITY: SALT FLAT OIL GATHERING STATION									
TBD									
AREA: NEW MEXICO									
TBD									
DAYS TYPE: BLOCK FLOW DIAGRAM									
TBD									
DATE: 12/5/19									
TBD									
BY: [Signature]									
TBD									
DESCRIPTION: PROCESS BLOCK FLOW DIAGRAM									
TBD									
REV: A									
TBD									
OXY									
FACILITY: SALT FLAT OIL GATHERING STATION									
TBD									
AREA: NEW MEXICO									
TBD									
DAYS TYPE: BLOCK FLOW DIAGRAM									
TBD									
DATE: 12/5/19									
TBD									
BY: [Signature]									
TBD									
DESCRIPTION: PROCESS BLOCK FLOW DIAGRAM									
TBD									
REV: A									
TBD									
OXY									
FACILITY: SALT FLAT OIL GATHERING STATION									
TBD									
AREA: NEW MEXICO									
TBD									
DAYS TYPE: BLOCK FLOW DIAGRAM									
TBD									
DATE: 12/5/19									
TBD									
BY: [Signature]									
TBD									
DESCRIPTION: PROCESS BLOCK FLOW DIAGRAM									
TBD									
REV: A									
TBD									
OXY									
FACILITY: SALT FLAT OIL GATHERING STATION									
TBD									
AREA: NEW MEXICO									
TBD									
DAYS TYPE: BLOCK FLOW DIAGRAM									
TBD									
DATE: 12/5/19									
TBD									
BY: [Signature]									
TBD									
DESCRIPTION: PROCESS BLOCK FLOW DIAGRAM									
TBD									
REV: A									
TBD									
OXY									
FACILITY: SALT FLAT OIL GATHERING STATION									
TBD									
AREA: NEW MEXICO									
TBD									
DAYS TYPE: BLOCK FLOW DIAGRAM									
TBD									
DATE: 12/5/19									
TBD									
BY: [Signature]									
TBD									
DESCRIPTION: PROCESS BLOCK FLOW DIAGRAM									
TBD									
REV: A									
TBD									
OXY									
FACILITY: SALT FLAT OIL GATHERING STATION									
TBD									
AREA: NEW MEXICO									
TBD									
DAYS TYPE: BLOCK FLOW DIAGRAM									
TBD									
DATE: 12/5/19									
TBD									
BY: [Signature]									
TBD									
DESCRIPTION: PROCESS BLOCK FLOW DIAGRAM									
TBD									
REV: A									
TBD									
OXY									
FACILITY: SALT FLAT OIL GATHERING STATION									
TBD									
AREA: NEW MEXICO									
TBD									
DAYS TYPE: BLOCK FLOW DIAGRAM									
TBD									
DATE: 12/5/19									
TBD									
BY: [Signature]									
TBD									
DESCRIPTION: PROCESS BLOCK FLOW DIAGRAM									
TBD									
REV: A									
TBD									
OXY									
FACILITY: SALT FLAT OIL GATHERING STATION									
TBD									
AREA: NEW MEXICO									
TBD									
DAYS TYPE: BLOCK FLOW DIAGRAM									
TBD									
DATE: 12/5/19									
TBD									
BY: [Signature]									
TBD									
DESCRIPTION: PROCESS BLOCK FLOW DIAGRAM									
TBD									
REV: A									
TBD									
OXY									
FACILITY: SALT FLAT OIL GATHERING STATION									
TBD									
AREA: NEW MEXICO									
TBD									
DAYS TYPE: BLOCK FLOW DIAGRAM									
TBD									
DATE: 12/5/19									
TBD									
BY: [Signature]									
TBD									
DESCRIPTION: PROCESS BLOCK FLOW DIAGRAM									
TBD									
REV: A									
TBD									
OXY									
FACILITY: SALT FLAT OIL GATHERING STATION									
TBD									
AREA: NEW MEXICO									
TBD									
DAYS TYPE: BLOCK FLOW DIAGRAM									
TBD									
DATE: 12/5/19									
TBD									
BY: [Signature]									
TBD									
DESCRIPTION: PROCESS BLOCK FLOW DIAGRAM									
TBD									
REV: A									
TBD									
OXY									
FACILITY: SALT FLAT OIL GATHERING STATION									
TBD									
AREA: NEW MEXICO									
TBD									
DAYS TYPE: BLOCK FLOW DIAGRAM									
TBD									
DATE: 12/5/19									
TBD									
BY: [Signature]									
TBD									
DESCRIPTION: PROCESS BLOCK FLOW DIAGRAM									
TBD									
REV: A									
TBD									
OXY									
FACILITY: SALT FLAT OIL GATHERING STATION									
TBD									
AREA: NEW MEXICO									
TBD									
DAYS TYPE: BLOCK FLOW DIAGRAM									

Table 1: Well Details				
No.	Train	Well Name	API	
1	1	Salt Flat 20 29 Federal Com #037H	30-015-45080	
2	1	Salt Flat 20 29 Federal Com #032H	30-015-45081	
3	1	Salt Flat 20 29 Federal Com #033H	30-015-45082	
4	1	Salt Flat 20 29 Federal Com #037H	30-015-45083	
5	2	Salt Flat CC 20 29 Federal Com #034H	30-015-45048	
6	2	Salt Flat CC 20 29 Federal Com #035H	30-015-45049	
7	2	Salt Flat CC 20 29 Federal Com #036H	30-015-45050	
8	2	Salt Flat CC 20 29 Federal Com #038H	30-015-46399	
9	3	Dibow CC 17 08 Federal Com #032H	30-015-45083	
10	3	Dibow CC 17 08 Federal Com #032H	30-015-45084	
11	3	Dibow CC 17 08 Federal Com #037H	30-015-46400	
12	3	Dibow CC 17 08 Federal Com #033H	30-015-45085	
13	4	Dibow CC 17 08 Federal Com #034H	30-015-45086	
14	4	Dibow CC 17 08 Federal Com #038H	30-015-46401	
15	4	Dibow CC 17 08 Federal Com #036H	30-015-45088	
16	4	Dibow CC 17 08 Federal Com #035H	30-015-45087	

Table 2: Valve Details			
Production Phase	Valve ID	Position	Sales Phase
V1A	OPEN	V1A	OPEN
V1B	OPEN	V1B	OPEN
V2A	OPEN	V2A	OPEN
V2B	OPEN	V2B	OPEN
V3A	OPEN	V3A	OPEN
V3B	OPEN	V3B	OPEN
V4A	OPEN	V4A	OPEN
V4B	OPEN	V4B	OPEN
S1	OPEN	S1	OPEN
S2	CLOSED	S2	CLOSED
S3	OPEN	S3	OPEN
S4	CLOSED	S4	CLOSED

Table 3: Meter Details			
Meter ID	Meter S/N	FMP	Type
GM1A	TBD	N	GAS
GM1B	TBD	N	GAS
GM1C	TBD	N	GAS
GM2A	TBD	N	GAS
GM2B	TBD	N	GAS
GM2C	TBD	N	GAS
GM3A	TBD	N	GAS
GM3B	TBD	N	GAS
GM3C	TBD	N	GAS
GM4A	TBD	N	GAS
GM4B	TBD	N	GAS
GM4C	TBD	N	GAS
GM1	TBD	Y	GAS
GM2	TBD	Y	GAS
GM3	TBD	N	GAS
GM4	TBD	N	GAS
GM5	TBD	N	GAS
GM6	TBD	N	GAS
GM7	TBD	N	GAS
GM8	TBD	N	GAS
SGM1	TBD	Y	GAS
SGM1	TBD	Y	GAS
OM1A	TBD	N	OIL
OM1B	TBD	N	OIL
OM1C	TBD	N	OIL
OM2A	TBD	N	OIL
OM2B	TBD	N	OIL
OM2C	TBD	N	OIL
OM3A	TBD	N	OIL
OM3B	TBD	N	OIL
OM3C	TBD	N	OIL

Table 3: Meter Details (Cont.)			
Meter ID	Meter S/N	FMP	Type
OM4A	TBD	N	OIL
OM4B	TBD	N	OIL
OM4C	TBD	N	OIL
SOM1	TBD	Y	OIL
SOM2	TBD	Y	OIL
SOM3	TBD	Y	OIL
SOM4	TBD	Y	OIL
WM1A	TBD	N	WATER
WM1B	TBD	N	WATER
WM1C	TBD	N	WATER
WM2A	TBD	N	WATER
WM2B	TBD	N	WATER
WM2C	TBD	N	WATER
WM3A	TBD	N	WATER
WM3B	TBD	N	WATER
WM3C	TBD	N	WATER
WM4A	TBD	N	WATER
WM4B	TBD	N	WATER
WM4C	TBD	N	WATER
WM1	TBD	N	WATER
WM2	TBD	N	WATER
WM3	TBD	N	WATER
WM4	TBD	N	WATER
OM5	TBD	N	OIL
LM1	TBD	N	OIL
LM2	TBD	N	OIL
LM3	TBD	N	OIL
LM4	TBD	N	OIL
LM5	TBD	N	OIL
LM6	TBD	N	OIL
LM7	TBD	N	OIL

Table 4: Oil Tank Details			
Tank ID	Train	S/N	
OT1	1	TBD	
OT2	1	TBD	
OT6	2	TBD	
OT7	2	TBD	
OT11	3	TBD	
OT12	3	TBD	
OT16	4	TBD	
OT17	4	TBD	
OT19	SALES	TBD	
OT20	SALES	TBD	

Table 5: Sales Phase			
Production Phase	Valve ID	Position	Sales Phase
V1A	OPEN	V1A	OPEN
V1B	OPEN	V1B	OPEN
V2A	OPEN	V2A	OPEN
V2B	OPEN	V2B	OPEN
V3A	OPEN	V3A	OPEN
V3B	OPEN	V3B	OPEN
V4A	OPEN	V4A	OPEN
V4B	OPEN	V4B	OPEN
S1	OPEN	S1	OPEN
S2	CLOSED	S2	CLOSED
S3	OPEN	S3	OPEN
S4	CLOSED	S4	CLOSED

Table 6: Meter Details			
Meter ID	Meter S/N	FMP	Type
GM1A	TBD	N	GAS
GM1B	TBD	N	GAS
GM1C	TBD	N	GAS
GM2A	TBD	N	GAS
GM2B	TBD	N	GAS
GM2C	TBD	N	GAS
GM3A	TBD	N	GAS
GM3B	TBD	N	GAS
GM3C	TBD	N	GAS
GM4A	TBD	N	GAS
GM4B	TBD	N	GAS
GM4C	TBD	N	GAS
GM1	TBD	Y	GAS
GM2	TBD	Y	GAS
GM3	TBD	N	GAS
GM4	TBD	N	GAS
GM5	TBD	N	GAS
GM6	TBD	N	GAS
GM7	TBD	N	GAS
GM8	TBD	N	GAS
SGM1	TBD	Y	GAS
SGM1	TBD	Y	GAS
OM1A	TBD	N	OIL
OM1B	TBD	N	OIL
OM1C	TBD	N	OIL
OM2A	TBD	N	OIL
OM2B	TBD	N	OIL
OM2C	TBD	N	OIL
OM3A	TBD	N	OIL
OM3B	TBD	N	OIL
OM3C	TBD	N	OIL

Table 6: Meter Details (Cont.)			
Meter ID	Meter S/N	FMP	Type
OM4A	TBD	N	OIL
OM4B	TBD	N	OIL
OM4C	TBD	N	OIL
SOM1	TBD	Y	OIL
SOM2	TBD	Y	OIL
SOM3	TBD	Y	OIL
SOM4	TBD	Y	OIL
WM1A	TBD	N	WATER
WM1B	TBD	N	WATER
WM1C	TBD	N	WATER
WM2A	TBD	N	WATER
WM2B	TBD	N	WATER
WM2C	TBD	N	WATER
WM3A	TBD	N	WATER
WM3B	TBD	N	WATER
WM3C	TBD	N	WATER
WM4A	TBD	N	WATER
WM4B	TBD	N	WATER
WM4C	TBD	N	WATER
WM1	TBD	N	WATER
WM2	TBD	N	WATER
WM3	TBD	N	WATER
WM4	TBD	N	WATER
OM5	TBD	N	OIL
LM1	TBD	N	OIL
LM2	TBD	N	OIL
LM3	TBD	N	OIL
LM4	TBD	N	OIL
LM5	TBD	N	OIL
LM6	TBD	N	OIL
LM7	TBD	N	OIL

Table 7: Sales Phase			
Production Phase	Valve ID	Position	Sales Phase
V1A	OPEN	V1A	OPEN
V1B	OPEN	V1B	OPEN
V2A	OPEN	V2A	OPEN
V2B	OPEN	V2B	OPEN
V3A	OPEN	V3A	OPEN
V3B	OPEN	V3B	OPEN
V4A	OPEN	V4A	OPEN
V4B	OPEN	V4B	OPEN
S1	OPEN	S1	OPEN
S2	CLOSED	S2	CLOSED
S3	OPEN	S3	OPEN
S4	CLOSED	S4	CLOSED

Table 8: Meter Details			
Meter ID	Meter S/N	FMP	Type
GM1A	TBD	N	GAS
GM1B	TBD	N	GAS
GM1C	TBD	N	GAS
GM2A	TBD	N	GAS
GM2B	TBD	N	GAS
GM2C	TBD	N	GAS
GM3A	TBD	N	GAS
GM3B	TBD	N	GAS
GM3C	TBD	N	GAS
GM4A	TBD	N	GAS
GM4B	TBD	N	GAS
GM4C	TBD	N	GAS
GM1	TBD	Y	GAS
GM2	TBD	Y	GAS
GM3	TBD	N	GAS
GM4	TBD	N	GAS
GM5	TBD	N	GAS
GM6	TBD	N	GAS
GM7	TBD	N	GAS
GM8	TBD	N	GAS
SGM1	TBD	Y	GAS
SGM1	TBD	Y	GAS
OM1A	TBD	N	OIL
OM1B	TBD	N	OIL
OM1C	TBD	N	OIL
OM2A	TBD	N	OIL
OM2B	TBD	N	OIL
OM2C	TBD	N	OIL
OM3A	TBD	N	OIL
OM3B	TBD	N	OIL
OM3C	TBD	N	OIL

Table 8: Meter Details (Cont.)			
Meter ID	Meter S/N	FMP	Type
OM4A	TBD	N	OIL
OM4B	TBD	N	OIL
OM4C	TBD	N	OIL
SOM1	TBD	Y	OIL
SOM2	TBD	Y	OIL
SOM3	TBD	Y	OIL
SOM4	TBD	Y	OIL
WM1A	TBD	N	WATER
WM1B	TBD	N	WATER
WM1C	TBD	N	WATER
WM2A	TBD	N	WATER
WM2B	TBD	N	WATER
WM2C	TBD	N	WATER
WM3A	TBD	N	WATER
WM3B	TBD	N	WATER
WM3C	TBD	N	WATER
WM4A	TBD	N	WATER
WM4B	TBD	N	WATER
WM4C	TBD	N	WATER
WM1	TBD	N	WATER
WM2	TBD	N	WATER
WM3	TBD	N	WATER
WM4	TBD	N	WATER
OM5	TBD	N	OIL
LM1	TBD	N	OIL
LM2	TBD	N	OIL
LM3	TBD	N	OIL
LM4	TBD	N	OIL
LM5	TBD	N	OIL
LM6	TBD	N	OIL
LM7	TBD	N	OIL

Table 9: Sales Phase			
Production Phase	Valve ID	Position	Sales Phase
V1A	OPEN	V1A	OPEN
V1B	OPEN	V1B	OPEN
V2A	OPEN	V2A	OPEN
V2B	OPEN	V2B	OPEN
V3A	OPEN	V3A	OPEN
V3B	OPEN	V3B	OPEN
V4A	OPEN	V4A	OPEN
V4B	OPEN	V4B	OPEN
S1	OPEN	S1	OPEN
S2	CLOSED	S2	CLOSED
S3	OPEN	S3	OPEN
S4	CLOSED	S4	CLOSED

Table 9: Sales Phase			
Production Phase	Valve ID	Position	Sales Phase
V1A	OPEN	V1A	OPEN
V1B	OPEN	V1B	OPEN
V2A	OPEN	V2A	OPEN
V2B	OPEN	V2B	OPEN
V3A	OPEN	V3A	OPEN
V3B	OPEN	V3B	OPEN
V4A	OPEN	V4A	OPEN
V4B	OPEN	V4B	OPEN
S1	OPEN	S1	OPEN
S2	CLOSED	S2	CLOSED
S3	OPEN	S3	OPEN
S4	CLOSED	S4	CLOSED

Table 10: Meter Details			
Meter ID	Meter S/N	FMP	Type
GM1A	TBD	N	GAS
GM1B	TBD	N	GAS
GM1C	TBD	N	GAS
GM2A	TBD	N	GAS
GM2B	TBD	N	GAS
GM2C	TBD	N	GAS
GM3A	TBD	N	GAS
GM3B	TBD	N	GAS
GM3C	TBD	N	GAS
GM4A	TBD	N	GAS
GM4B	TBD	N	GAS
GM4C	TBD	N	GAS
GM1	TBD	Y	GAS
GM2	TBD	Y	GAS
GM3	TBD	N	GAS
GM4	TBD	N	GAS
GM5	TBD	N	GAS
GM6	TBD	N	GAS
GM7	TBD	N	GAS
GM8	TBD	N	GAS
SGM1	TBD	Y	GAS
SGM1	TBD	Y	GAS
OM1A	TBD	N	OIL
OM1B	TBD	N	OIL
OM1C	TBD	N	OIL
OM2A	TBD	N	OIL
OM2B	TBD	N	OIL
OM2C	TBD	N	OIL
OM3A	TBD	N	OIL
OM3B	TBD	N	OIL
OM3C	TBD	N	OIL

Table 10: Meter Details (Cont.)			
Meter ID	Meter S/N	FMP	Type
OM4A	TBD	N	OIL
OM4B	TBD	N	OIL
OM4C	TBD	N	OIL
SOM1	TBD	Y	OIL
SOM2	TBD	Y	OIL
SOM3	TBD	Y	OIL
SOM4	TBD	Y	OIL
WM1A	TBD	N	WATER
WM1B	TBD	N	WATER
WM1C	TBD	N	WATER
WM2A	TBD	N	WATER
WM2B	TBD	N	WATER
WM2C	TBD	N	WATER
WM3A	TBD	N	WATER
WM3B	TBD	N	WATER
WM3C	TBD	N	WATER
WM4A	TBD	N	WATER
WM4B	TBD	N	WATER
WM4C	TBD	N	WATER
WM1	TBD	N	WATER
WM2	TBD	N	WATER
WM3	TBD	N	WATER
WM4	TBD	N	WATER
OM5	TBD	N	OIL
LM1	TBD	N	OIL
LM2	TBD	N	OIL
LM3	TBD	N	OIL
LM4	TBD	N	OIL
LM5	TBD	N	OIL
LM6	TBD	N	OIL
LM7	TBD	N	OIL

Table 11: Sales Phase			
Production Phase	Valve ID	Position	Sales Phase
V1A	OPEN	V1A	OPEN
V1B	OPEN	V1B	OPEN
V2A	OPEN	V2A	OPEN
V2B	OPEN	V2B	OPEN
V3A	OPEN	V3A	OPEN
V3B	OPEN	V3B	OPEN
V4A	OPEN	V4A	OPEN
V4B	OPEN	V4B	OPEN
S1	OPEN	S1	OPEN
S2	CLOSED	S2	CLOSED
S3	OPEN	S3	OPEN
S4	CLOSED	S4	CLOSED

Table 11: Sales Phase			
Production Phase	Valve ID	Position	Sales Phase
V1A	OPEN	V1A	OPEN
V1B	OPEN	V1B	OPEN
V2A	OPEN	V2A	OPEN
V2B	OPEN	V2B	OPEN
V3A	OPEN	V3A	OPEN
V3B	OPEN	V3B	OPEN
V4A	OPEN	V4A	OPEN
V4B	OPEN	V4B	OPEN
S1	OPEN	S1	OPEN
S2	CLOSED	S2	CLOSED
S3	OPEN	S3	OPEN
S4	CLOSED	S4	CLOSED

Table 12: Meter Details			
Meter ID	Meter S/N	FMP	Type
GM1A	TBD	N	GAS
GM1B	TBD	N	GAS
GM1C	TBD	N	GAS
GM2A	TBD	N	GAS
GM2B	TBD	N	GAS
GM2C	TBD	N	GAS
GM3A	TBD	N	GAS
GM3B	TBD	N	GAS
GM3C	TBD	N	GAS
GM4A	TBD	N	GAS
GM4B	TBD	N	GAS
GM4C	TBD	N	GAS
GM1	TBD	Y	GAS
GM2	TBD	Y	GAS
GM3	TBD	N	GAS
GM4	TBD	N	GAS
GM5	TBD	N	GAS
GM6	TBD	N	GAS
GM7			

District I
1625 N. French Dr., Hobbs, NM 88240
Phone: (505) 393-6161 Fax: (505) 393-6720
District II
811 S. First St., Artesia, NM 88210
Phone: (505) 748-1283 Fax: (505) 748-8720
District III
1000 Ran. Bruno Road, Artesia, NM 87410
Phone: (505) 334-6178 Fax: (505) 334-6178
District IV
1220 S. St. Francis Dr., Santa Fe, NM 87505
Phone: (505) 476-3450 Fax: (505) 476-3452

State of New Mexico
Energy, Minerals & Natural Resources Department
OIL CONSERVATION DIVISION
1220 South St. Francis Dr.
Santa Fe, NM 87505

NM OIL CONSERVATION
ARTESIA DISTRICT
JUN 27 2018

Form C-102
Revised August 1, 2011
Submit one copy to appropriate
District Office

☐ AMENDED REPORT

WELL LOCATION AND ACREAGE DEDICATION PLAT

API Number 30-015-	Pool Code 90220	Pool Name Purple Sage Wolfcamp
Property Code 321601	Property Name SALT FLAT CC "20-29" FEDERAL COM	Well Number 31H
OGRID No. 16696	Operator Name OXY USA INC.	Elevation 2942.2'

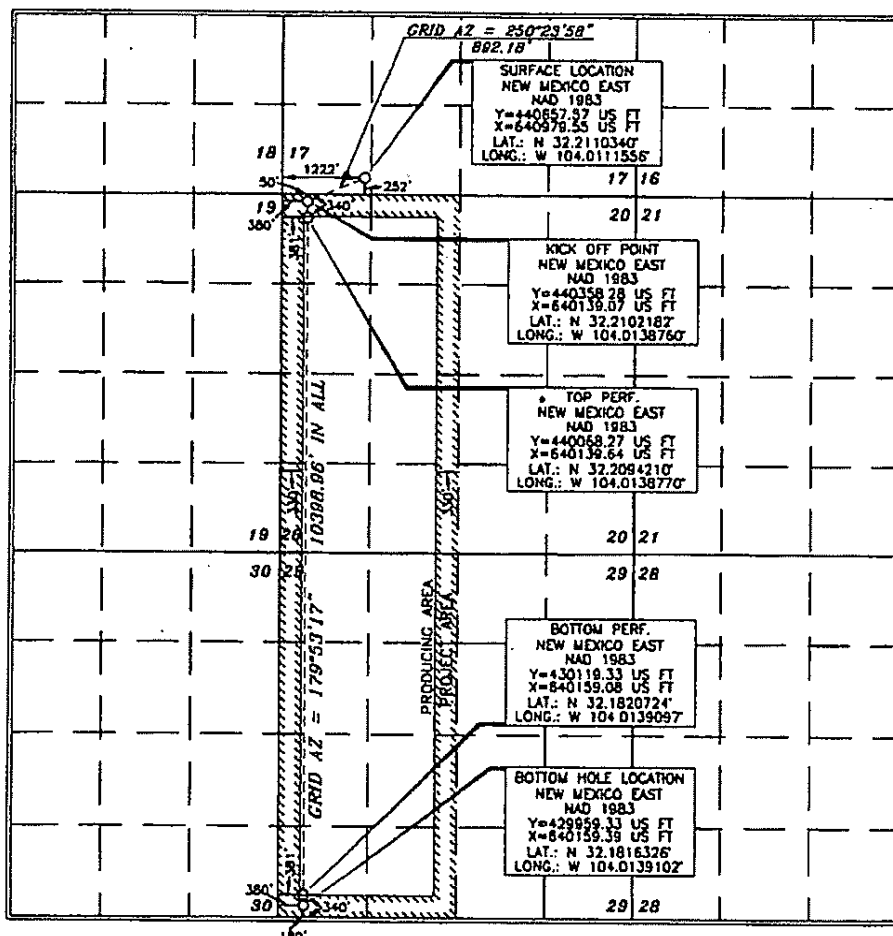
Surface Location

UL or lot no.	Section	Township	Range	Lot Idn	Feet from the	North/South line	Feet from the	East/West line	County
M	17	24 SOUTH	29 EAST, N.M.P.M.		252'	SOUTH	1222'	WEST	EDDY

Bottom Hole Location If Different From Surface

UL or lot no.	Section	Township	Range	Lot Idn	Feet from the	North/South line	Feet from the	East/West line	County
M	29	24 SOUTH	29 EAST, N.M.P.M.		180'	SOUTH	380'	WEST	EDDY
Dedicated Acres 640		Joint or Infill Y	Consolidation Code	Order No.					

No allowable will be assigned to this completion until all interests have been consolidated or a non-standard unit has been approved by the division.



OPERATOR CERTIFICATION

I hereby certify that the information contained herein is true and complete to the best of my knowledge and belief, and that this organization either owns a working interest or an undivided mineral interest in the land including the proposed bottom hole location or has a right to drill this well at this location pursuant to a contract with an owner of such a mineral or working interest, or to a voluntary pooling agreement or a compulsory pooling order heretofore entered by the division.

Signature: David Stewart Date: 3/13/18
Printed Name: David Stewart
E-mail Address: david_stewart@oxy.com

SURVEYOR CERTIFICATION

I hereby certify that the information shown on this plat was plotted from the best of actual surveys made by me or under my supervision and that the same is true and correct to the best of my belief.

Date of Survey: OCTOBER 10, 2017
Signature and Seal: Terry J. As...
Professional Surveyor

Certificate Number: 15079

WO# 171019WL-d (NA)

RWP 7-3-18

District I
1624 N. French Dr., Alhambra, NM 87004
Phone: (505) 393-4161 Fax: (505) 393-4720
District II
811 S. First St., Artesia, NM 87003
Phone: (505) 748-1182 Fax: (505) 748-9720
District III
1000 Rio Grande Road, Aztec, NM 87410
Phone: (505) 334-6178 Fax: (505) 334-6170
District IV
1226 S. St. Francis Dr., Santa Fe, NM 87505
Phone: (505) 476-3400 Fax: (505) 476-3402

State of New Mexico
Energy, Minerals & Natural Resources Department
OIL CONSERVATION DIVISION
1220 South St. Francis Dr.
Santa Fe, NM 87505

NM OIL CONSERVATION
ARTESIA DISTRICT
JUN 27 2018

RECEIVED

Form C-102
Revised August 1, 2011
Submit one copy to appropriate
District Office

☐ AMENDED REPORT

WELL LOCATION AND ACREAGE DEDICATION PLAT

API Number 30-015-45081	Pool Code 93220	Pool Name Purple Sage Wolfcamp
Property Code 321601	Property Name SALT FLAT CC "20-29" FEDERAL COM	Well Number 32H
OGRID No. 16696	Operator Name OXY USA INC.	Elevation 2941.9'

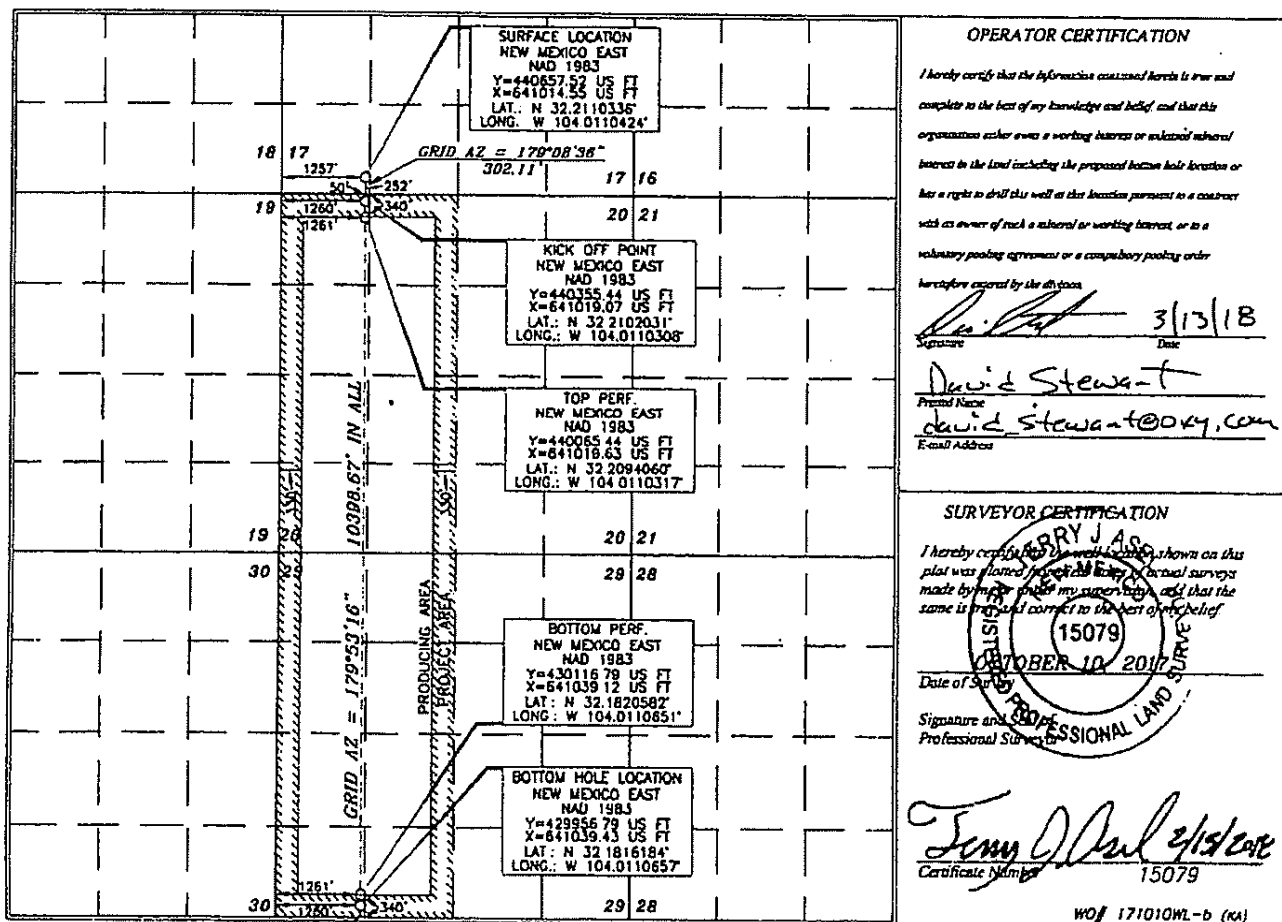
Surface Location

UL or lot no.	Section	Township	Range	Lot Ida	Feet from the	North/South line	Feet from the	East/West line	County
M	17	24 SOUTH	29 EAST, N.M.P.M.		252'	SOUTH	1257'	WEST	EDDY

Bottom Hole Location If Different From Surface

UL or lot no.	Section	Township	Range	Lot Ida	Feet from the	North/South line	Feet from the	East/West line	County
M	29	24 SOUTH	29 EAST, N.M.P.M.		180'	SOUTH	1260'	WEST	EDDY
Dedicated Acres 640	Joint or Infill Y	Consolidation Code	Order No.						

No allowable will be assigned to this completion until all interests have been consolidated or a non-standard unit has been approved by the division.



OPERATOR CERTIFICATION

I hereby certify that the information contained herein is true and complete to the best of my knowledge and belief, and that this organization either owns a working interest or mineral interest in the land including the proposed bottom hole location or has a right to drill this well as that location pursuant to a contract with an owner of such a mineral or working interest, or to a voluntary pooling agreement or a compulsory pooling order heretofore entered by the division.

Signature: *David Stewart* Date: **3/13/18**
Printed Name: **David Stewart**
E-mail Address: **david.stewart@oxy.com**

SURVEYOR CERTIFICATION

I hereby certify that the information shown on this plat was obtained from reliable sources, and that the same is true and correct to the best of my belief.

Date of Survey: **OCTOBER 10, 2017**
Signature and Seal: *Tony J. As...*
Professional Surveyor: **15079**
Certificate Number: **15079**

WO# 171010WL-b (KA)

RUB 7-3-18

District I
1625 N. French Dr., Hobbs, NM 88240
Phone: (575) 393-6161 Fax: (575) 393-0720
District II
811 S. First St., Artesia, NM 88210
Phone: (575) 748-1283 Fax: (575) 748-0720
District III
1000 Rio Bravos Road, Aztec, NM 87410
Phone: (505) 334-6178 Fax: (505) 334-6170
District IV
1220 S. St. Francis Dr., Santa Fe, NM 87505
Phone: (505) 476-3460 Fax: (505) 476-3462

State of New Mexico
Energy, Minerals & Natural Resources Department
OIL CONSERVATION DIVISION
1220 South St. Francis Dr.
Santa Fe, NM 87505

Form C-102
Revised August 1, 2011
Submit one copy to appropriate
District Office

☒ AMENDED REPORT

WELL LOCATION AND ACREAGE DEDICATION PLAT

API Number 30-015-45082	Pool Code 50371	Pool Name Pierce Crossing Bone Spring
Property Code	Property Name SALT FLAT CC "20-29" FEDERAL COM	Well Number 33H
OGRID No. 14696	Operator Name OXY USA INC.	Elevation 2941.7'

Surface Location

UL or lot no.	Section	Township	Range	Lot Idn	Feet from the	North/South line	Feet from the	East/West line	County
M	17	24 SOUTH	29 EAST, N.M.P.M.		252'	SOUTH	1292'	WEST	EDDY

Bottom Hole Location If Different From Surface

UL or lot no.	Section	Township	Range	Lot Idn	Feet from the	North/South line	Feet from the	East/West line	County
N	29	24 SOUTH	29 EAST, N.M.P.M.		20'	SOUTH	1550'	WEST	EDDY
Dedicated Acres 640	Joint or Infill	Consolidation Code	Order No.						

No allowable will be assigned to this completion until all interests have been consolidated or a non-standard unit has been approved by the division.

		<p>OPERATOR CERTIFICATION</p> <p>I hereby certify that the information contained hereto is true and complete to the best of my knowledge and belief, and that this organization either owns a working interest or unleased mineral interest in the land including the proposed bottom hole location or has a right to drill this well at this location pursuant to a contract with an owner of such a mineral or working interest, or to a voluntary pooling agreement or a compulsory pooling order heretofore entered by the division.</p> <p><i>Sarah Chapman</i> 6/14/19 Signature Date Sarah Chapman Printed Name sarah.chapman@oxy.com E-mail Address</p> <p>SURVEYOR CERTIFICATION</p> <p>I hereby certify that the well location shown on this plat was plotted from the notes of actual surveys made by me or under my supervision, and that the same is true and correct to the best of my belief.</p> <p><i>Tommy J. Asel</i> 5/2/2019 Date of Survey Certificate Number 15079 Professional Surveyor</p> <p>WO# 171019WL-b (Rev. A) (KA)</p>
--	--	---

Intent ☒ As Drilled ☐

API # 30-015-45082		
Operator Name: oxy USA Inc.	Property Name: Salt Flat CC 20-29 Fed Com	Well Number 33H

Kick Off Point (KOP)

UL C	Section 20	Township 24S	Range 29E	Lot	Feet 50	From N/S North	Feet 1550	From E/W West	County EDDY
Latitude 32.2101982					Longitude -104.0100931			NAD NAD83	

First Take Point (FTP)

UL C	Section 20	Township 24S	Range 29E	Lot	Feet 100	From N/S North	Feet 1550	From E/W West	County EDDY
Latitude 32.2100007					Longitude -104.0100933			NAD NAD83	

Last Take Point (LTP)

UL N	Section 29	Township 24S	Range 29E	Lot	Feet 100	From N/S South	Feet 1550	From E/W West	County EDDY
Latitude 32.1813138					Longitude -104.0101257			NAD NAD83	

Is this well the defining well for the Horizontal Spacing Unit? ☒Is this well an infill well? ☐

If infill is yes please provide API if available, Operator Name and well number for Defining well for Horizontal Spacing Unit.

API #		
Operator Name:	Property Name:	Well Number

KZ 06/29/2018

NM OIL CONSERVATION
ARTESIA DISTRICT

State of New Mexico
 Energy, Minerals & Natural Resources Department
OIL CONSERVATION DIVISION
 1220 South St. Francis Dr.
 Santa Fe, NM 87505

OCT 09 2019

Form C-102

Revised August 1, 2011

Submit one copy to appropriate

RECEIVED

District Office

☐ AMENDED REPORT

District I
 1625 N. French Dr., Hobbs, NM 88240
 Phone: (505) 393-6161 Fax: (505) 393-0720
 District II
 411 S. First St., Artesia, NM 88210
 Phone: (505) 748-1283 Fax: (505) 748-9720
 District III
 1000 Rio Brazos Road, Aztec, NM 87410
 Phone: (505) 334-6178 Fax: (505) 334-6170
 District IV
 1220 S. St. Francis Dr., Santa Fe, NM 87505
 Phone: (505) 476-3460 Fax: (505) 476-3462

WELL LOCATION AND ACREAGE DEDICATION PLAT

API Number 30-015-46369	Pool Code 98220	Pool Name Purple Sage Wolfcamp
Property Code 321601	Property Name SALT FLAT CC "20_29" FEDERAL COM	Well Number 37H
OGRID No. 16696	Operator Name OXY USA INC.	Elevation 2935.5'

Surface Location

UL or lot no.	Section	Township	Range	Lot Idn	Feet from the	North/South line	Feet from the	East/West line	County
N	17	24 SOUTH	29 EAST, N.M.P.M.		435'	SOUTH	1765'	WEST	EDDY

Bottom Hole Location If Different From Surface

UL or lot no.	Section	Township	Range	Lot Idn	Feet from the	North/South line	Feet from the	East/West line	County
N	29	24 SOUTH	29 EAST, N.M.P.M.		20'	SOUTH	2330'	WEST	EDDY
Dedicated Acres 640	Joint or Infill Y	Consolidation Code	Order No.						

No allowable will be assigned to this completion until all interests have been consolidated or a non-standard unit has been approved by the division.

	OPERATOR CERTIFICATION I hereby certify that the information contained herein is true and complete to the best of my knowledge and belief, and that this organization either owns a working interest or a mineral interest in the land including the proposed bottom hole location or has a right to drill this well at this location pursuant to a contract with an owner of such a mineral or working interest or to a voluntary pooling agreement or a compulsory pooling order heretofore entered by the division. Signature: <u>David Stewart</u> Printed Name: <u>David Stewart</u> E-mail Address: <u>David.Stewart@oxy.com</u> Date: <u>5/14/19</u>
	SURVEYOR CERTIFICATION I hereby certify that the well location shown on this plat was plotted from the best of actual surveys made by me or under my supervision, and that the same is true and correct to the best of my belief. Date of Survey: <u>NOVEMBER 30, 2018</u> Signature and Seal: <u>Terry J. As...</u> Professional Surveyor Certificate Number: <u>15079</u>
	GRID DATA SURFACE LOCATION NEW MEXICO EAST NAD 1983 Y=440838.80 US FT X=641521.26 US FT LAT.: N 32.2115277 LONG.: W 104.0094023 GRID AZ = 130°36'32" 747.92'
	KICK OFF POINT NEW MEXICO EAST NAD 1983 Y=440351.99 US FT X=642089.06 US FT LAT.: N 32.2101848 LONG.: W 104.0075712 FIRST TAKE POINT NEW MEXICO EAST NAD 1983 Y=440301.99 US FT X=642089.16 US FT LAT.: N 32.2100473 LONG.: W 104.0075714 LAST TAKE POINT NEW MEXICO EAST NAD 1983 Y=429793.68 US FT X=642110.89 US FT LAT.: N 32.1813811 LONG.: W 104.0076044 BOTTOM HOLE LOCATION NEW MEXICO EAST NAD 1983 Y=429793.68 US FT X=642110.89 US FT LAT.: N 32.1811612 LONG.: W 104.0076047

WOF 181130WL-a (Rev. B) (KA)

RW 10-10-19