

0FWOT-200310-C-107B 668
3/10/20 PLC pDM2009337664

Proposal for Poker Lake Unit 89 Battery

XTO PERMIAN OPERATING LLC is requesting approval for Surface Commingle and Off-Lease measurement, sales and storage for the wells listed on the attached table.

Well Information and Lease Description

The Poker Lake Unit 89 Battery ("battery") is used as a common tank battery for twenty six (26) wells. At this battery, all wells are part of the Delaware lease 71016X and the Participating Area (PA) for the Delaware formation 71016F.

The battery has six (6), 500 bbl oil tanks and four (4) fiberglass produced water tanks on the location. The battery is located in SWNE Sec 25 T24S-R30E. Oil from this facility is sent through a LACT into a pipeline. The gas from the battery is sent to Energy Transfer Company (ETC) through the gas sales meter on location.

Process Flow and Allocation Description

The flow of production is shown in detail on the enclosed facility diagram. A map is included with this application outlining lease/PA boundaries, location of wells and facility. All wells are located inside the Poker Lake Unit boundaries.

Oil Process Flow:

Under normal operating conditions, the combined production stream from the wells flows from their respective locations to a production header located on the southeast side of the facility. This header is configured to route production through either the main production train, or one of the three test trains. All wells are routed to either one of three test separators, or a main production separator allowing up to three wells to be in test at all times.

Wells flowing through the main production train flow through a production 2 phase separator to separate gas from the well stream. The oil-water stream is then directed to the regular production free water knockout (FWKO) and then to the main heater treater. Oil is then routed to the VRT and one of the six oil tanks at the battery.

A well on test flows from the production header into one of the three test separators on location. The Reg. Test train goes through the following path. The wells are routed through the header to the reg. test 3 phase separator where the well stream is separated into oil, water, and gas. The oil is metered directly off the test separator through a turbine meter (91520-35). Wells in the high volume test train go through the header and to the high volume 2 phase test separator where gas is separated from the oil and water. The oil-water stream then goes to the high volume test FWKO, where oil is separated from the water. Oil from the FWKO is then sent to the high volume 3 phase test separator. Oil is measured directly off the high volume 3 phase test separator (40193-64). The oil from both test trains and sent directly to the tanks.

The PLU 128 is currently not producing as well is scheduled for P&A. The test separator is currently out of service (11173056726).

Oil production is allocated to each well based on monthly well test using the factor derived from the turbine test meter reading, and the LACT meter reading. Each well is put into test for 24 hours at least once a month. All oil is sold through a LACT meter #3927 directly into the a pipeline. The LACT meter is proven quarterly. The LACT meter (#3927) will be the designated FMP for oil at the facility.

Gas Process Flow

Gas production from the wells also flows to this battery and follows the same separation, metering and allocation process as oil.

Gas from the wells in the main production train is separated from the well stream at the regular 2 phase separator and the main heater treater. The gas from each vessel is gathered in a common gas line which is then routed to the sales scrubber and then the battery check meter (DBPL0078G).

Gas from the regular test train is metered at the reg test meter (DBPL0147G). The gas from the high volume test train is metered at metered at the High volume test meter (DBPL0165G).

Gas can also be diverted to a metered flare (DBPL0047G) on location in case of emergency or pipeline restrictions.

Gas production is allocated daily using the factor derived from the volumes recorded on the three test meters (DBPL0147G, DBPL0165G, and DBPL00022G) and gas check meter (DBPL0078G). All EFM gas meters are installed and calibrated per API and 43 CFR 3174 requirements. The check meter (DBPL013G) will be the designated FMP for gas at this facility.

This facility utilizes a VRU to capture tank vapors. Gas from the VRU is recorded on gas meter (DBPL0134G) and is allocated based on each wells' allocated gas production.

Water production is measured using turbine meters located off the test separators and main separators. The water is discharged into a common water line to travel to the water tanks where it is stored until it enters the SWD system.

Summary:

The proposed commingling and allocation will not result in reduced royalty or improper measurement of production. The proposed commingling will reduce the surface facility footprint and overall emissions.

Commingling of oil and gas production from the PA wells and the lease well is necessary for the ultimate recovery of minerals. Approval to commingle the wells until final PAs are determined is requested to avoid multiple CAA filings. If the consolidated PA is not approved as submitted, the appropriate CAAs will be submitted. The NMOCD will be petitioned for like approval at that time if needed.

XTO Permian Operating LLC understands the requested approval will not constitute the granting of any right-of-way or construction rights not granted by the lease instrument.

Working, royalty, and overriding interest owners will be notified of this application via certified mail.

The BLM and NMOCD will be notified of any future changes in the facilities.

Federal Lease: NMNM 71016AC PA NMNM0002862 (240 ac), NMNM0030452 (160 ac) 12.5% Fed Royalty

Well Name (Property Code)	API	Loc ¼, ¼, Sec. Twp, Rng	Pool (NMOCD Pool Code)	BOPD	MCFPD	
Poker Lake Unit 308H (325589)	30-015- 37728	NESE Sec 26 24S-30E	Poker Lake; Delaware, Southwest (96047)	20	100	

**Federal Lease: NMNM071016X NMNM0002862 (480 ac), NMNM0030452 (400 ac),
NMLC0061705B (240 ac), 12.5% Fed Royalty**

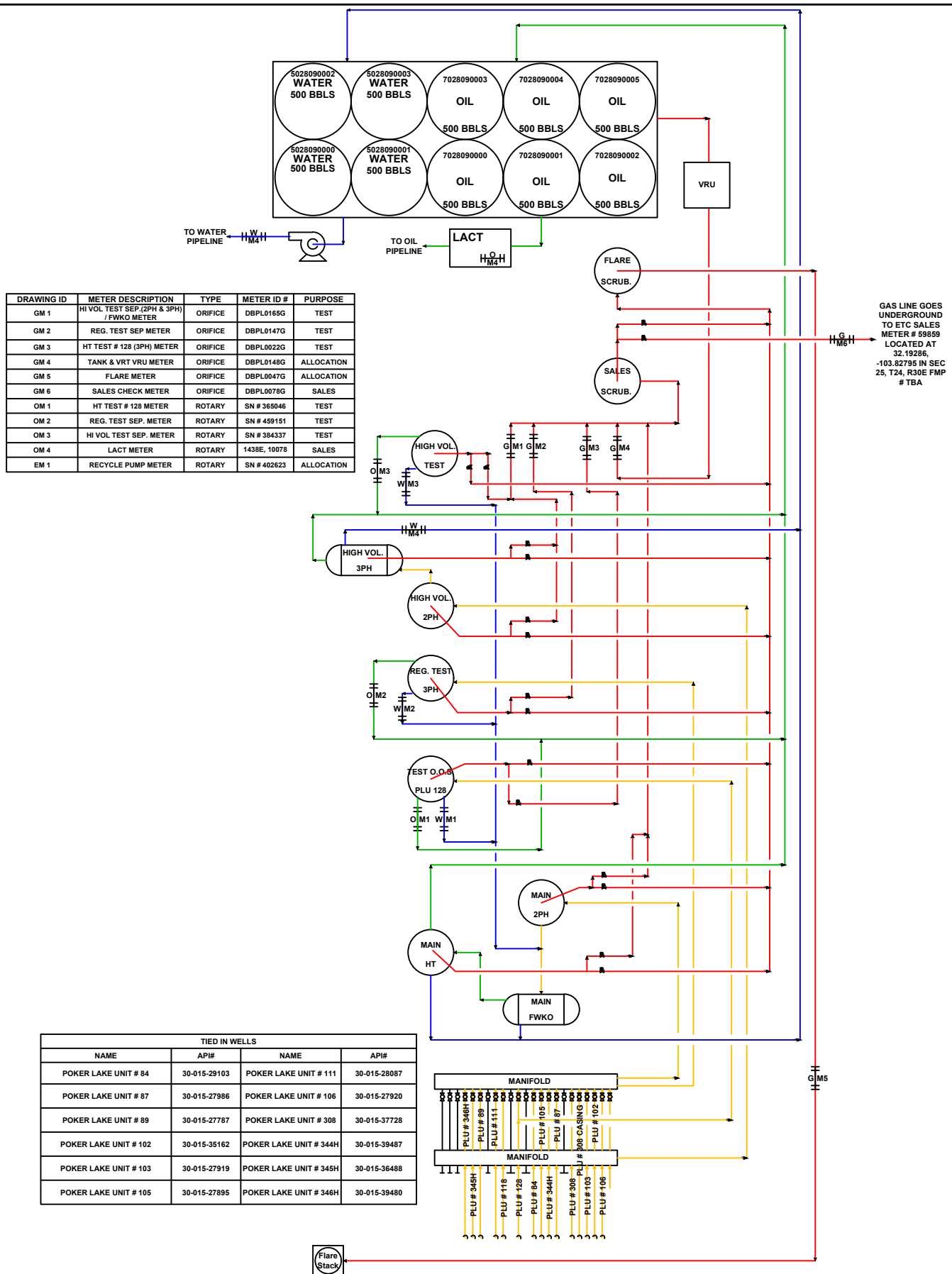
Well Name (Property Code)	API	Loc ¼, ¼, Sec. Twp, Rng	Pool (NMOCD Pool Code)	BOPD	MCFPD	
Poker Lake Unit 344H (325589)	30-015- 39487	SESW Sec 26 24S-30E	Poker Lake; Delaware, Northwest (96046)	28	280	
Poker Lake Unit 345H (325589)	30-015- 39488	SESW Sec 35 24S-30E	Poker Lake; Delaware, Northwest (96046)	18	50	
Poker Lake Unit 346H (325589)	30-015- 39480	NWSW Sec 35 24S-30E	Poker Lake; Delaware, Northwest (96046)	75	500	

**Federal Lease: NMNM071016F PA NMLC0061705B (364.70 ac), NMLC0061705A, NMNM0157779 (80),
B16852 (120 ac), E022067 (40 ac) 12.5% Fed Royalty**

Well Name (Property Code)	API	Loc ¼, ¼, Sec. Twp, Rng	Pool (NMOCD Pool Code)	BOPD	MCFPD	
Poker Lake Unit 087 (325589)	30-015- 27986	NWNE Sec 25 24S-30E	Poker Lake; Delaware, Southwest (96047)	15	10	
Poker Lake Unit 89 (325589)	30-015- 27787	SWNE Sec 25 24S-30E	Poker Lake; Delaware, Southwest (96047)	20	29	
Poker Lake Unit 103 (325589)	30-015- 27919	SESW Sec 25 24S-30E	Poker Lake; Delaware, Southwest (96047)	10	20	
Poker Lake Unit 106 (325589)	30-015- 27920	NESW Sec 25 24S-30E	Poker Lake; Delaware, Southwest (96047)	10	22	
Poker Lake Unit 111 (325589)	30-015- 28087	SWSE Sec 25 24S-30E	Poker Lake; Delaware, Southwest (96047)	16	25	
Poker Lake Unit 84 (325589)	30-015- 29103	SWNE Sec 36 24S-30E	Poker Lake; Delaware, Southwest (96047)	70	40	
Poker Lake Unit 105 (325589)	30-015- 27895	NWNE Sec 36 24S-30E	Poker Lake; Delaware, Southwest (96047)	6	18	

Federal Lease: NMLC0061705B 12.5% Fed Royalty

Well Name (Property Code)	API	Loc ¼, ¼, Sec. Twp, Rng	Pool (NMOCD Pool Code)	BOPD	MCFPD	
Poker Lake Unit 102 (325589)	30-015- 35162	NENW Sec 25 24S-30E	Poker Lake; Delaware, Southwest (96047)	8	14	

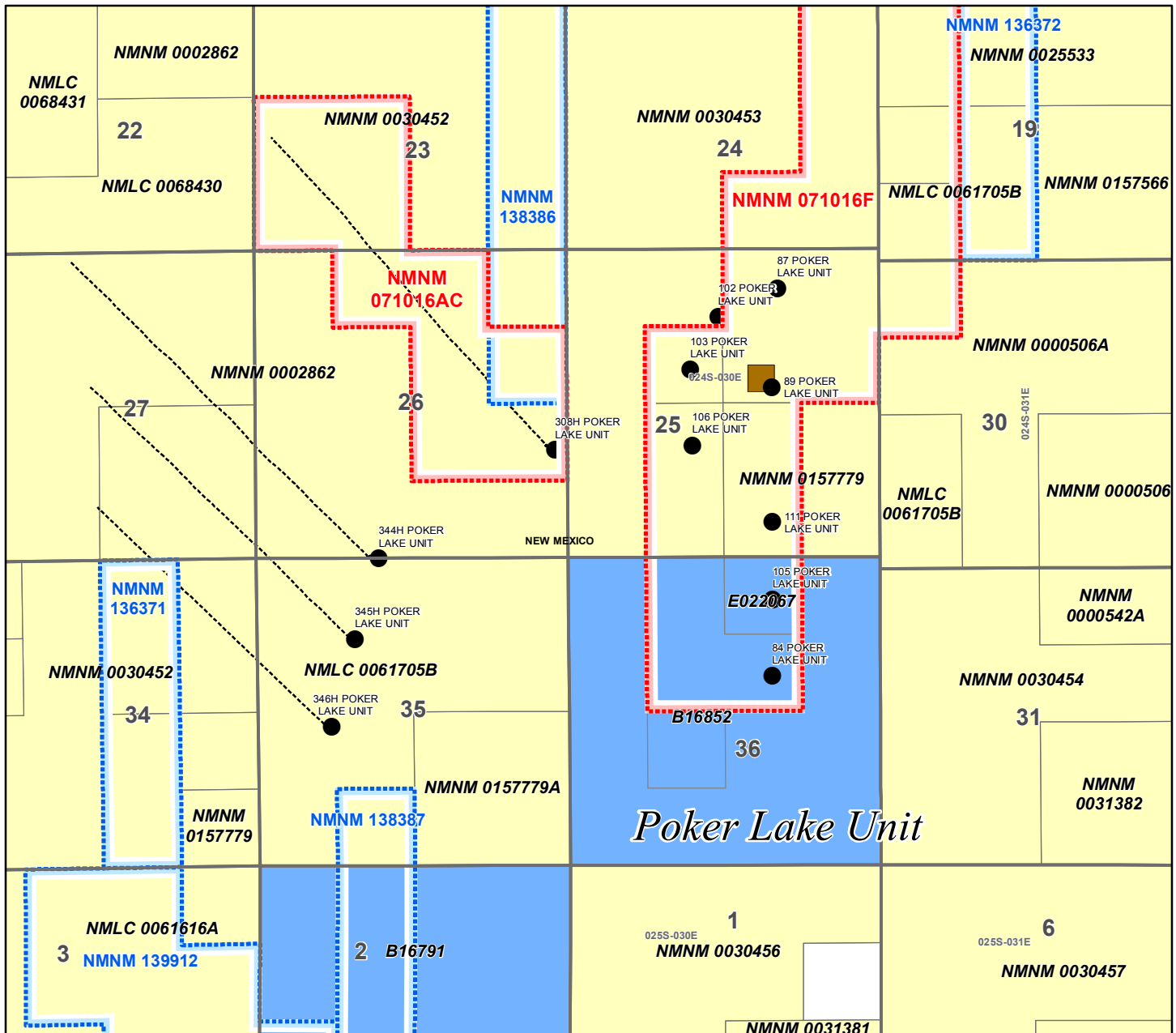


Facility Gas Usage						XTO PERMIAN OPERATING, LLC	POKER LAKE UNIT # 089 CENTRAL TANK BATTERY EDDY COUNTY, NEW MEXICO
Equipment	Usage	Revision	Description of Change	Date	By		
MAIN HEATER TREATER	16.67 MCFD	1	ORIGINAL DRAWING	3/3/2020	CAH		LAT: 32.18958/LONG: -103.83157
TEST 128 HEATER TREATER	8.33 MCFD						COMMINGLING DIAGRAM
PNEUMATIC CONTROLLER	144 SCFD						

PLU Meter 089 Battery Wells

Eddy Co., NM

February 24, 2020



District I
PO Box 1960, Hobbs, NM 88241-1960
District II
PO Drawer DD, Artesia, NM 88211-0719
District III
1000 Rio Brazos Rd., Aztec, NM 87410
District IV
PO Box 2088, Santa Fe, NM 87504-2088

State of New Mexico
Energy, Minerals & Natural Resources Department

OIL CONSERVATION DIVISION
PO Box 2088
Santa Fe, NM 87504-2088

Form C-102
Revised February 10, 1994
Instructions on back
Submit to Appropriate District Office
State Lease - 4 Copies
Fee Lease - 3 Copies

☐ AMENDED REPORT

WELL LOCATION AND ACREAGE DEDICATION PLAT

API Number 30-015-28087		Pool Code 96047		Pool Name Poker Lake - Delaware, SW	
Property Code 306402		Property Name POKER LAKE UNIT		Well Number 111	
OGRID No. 008079		Operator Name FORTSON OIL COMPANY		Elevation 3448.	

10 Surface Location

UL or lot no.	Section	Township	Range	Lot Idn	Feet from the	North/South line	Feet from the	East/West line	County
0	25	24 S	30E		660	SOUTH	1980	EAST	EDDY

11 Bottom Hole Location If Different From Surface

UL or lot no.	Section	Township	Range	Lot Idn	Feet from the	North/South line	Feet from the	East/West line	County

12 Dedicated Acres	13 Joint or Infill	14 Consolidation Code	15 Order No.
40			

NO ALLOWABLE WILL BE ASSIGNED TO THIS COMPLETION UNTIL ALL INTERESTS HAVE BEEN CONSOLIDATED
OR A NON-STANDARD UNIT HAS BEEN APPROVED BY THE DIVISION

16	17 OPERATOR CERTIFICATION	
	I hereby certify that the information contained herein is true and complete to the best of my knowledge and belief.	
	Signature <u>Jane Foster</u> Printed Name Jane Foster Title Production Technician Date 06/03/94	
	Date	
18 SURVEYOR CERTIFICATION	I hereby certify that the well location shown on this plat was plotted from field notes of actual surveys made by me or under my supervision, and that the same is true and correct to the best of my belief.	
	MAY 18, 1994 Date of Survey W. R. REDD Signature and Seal of Professional Surveyor:	
	Certificate Number 5412 NM PRESS NO. 5412	

DISTRICT I
1625 N. French Dr., Hobbs, NM 88240

DISTRICT II
1301 W. Grand Avenue, Artesia, NM 88210

DISTRICT III
1000 Rio Brazos Rd., Aztec, NM 87410

DISTRICT IV
1220 S. St. Francis Dr., Santa Fe, NM 87505

State of New Mexico
Energy, Minerals and Natural Resources Department

OIL CONSERVATION DIVISION
1220 South St. Francis Dr.
Santa Fe, New Mexico 87505

Form C-102
Revised October 15, 2009

Submit one copy to appropriate District Office

WELL LOCATION AND ACREAGE DEDICATION PLAT

☐ AMENDED REPORT

API Number 30-015-37728		Pool Code 96047		Pool Name POKER LAKE: DELAWARE, SW	
Property Code 306402		Property Name POKER LAKE UNIT		Well Number 308H	
OGRID No. 260737		Operator Name BOPCO, L.P.		Elevation 3402'	

Surface Location

UL or lot No.	Section	Township	Range	Lot Idn	Feet from the	North/South line	Feet from the	East/West line	County
1	26	24 S	30 E		1880	SOUTH	330	EAST	EDDY

Bottom Hole Location If Different From Surface

UL or lot No.	Section	Township	Range	Lot Idn	Feet from the	North/South line	Feet from the	East/West line	County
L	23	24 S	30 E		1966	SOUTH	318	WEST	EDDY

Dedicated Acres	Joint or Infill	Consolidation Code	Order No.
400	N		

NO ALLOWABLE WILL BE ASSIGNED TO THIS COMPLETION UNTIL ALL INTERESTS HAVE BEEN CONSOLIDATED
OR A NON-STANDARD UNIT HAS BEEN APPROVED BY THE DIVISION

	19 OPERATOR CERTIFICATION	
	I hereby certify that the information contained herein is true and complete to the best of my knowledge and belief, and that this organization either owns a working interest or unleased mineral interest in the land including the proposed bottom hole location or has a right to drill this well at this location pursuant to a contract with an owner of such a mineral or working interest, or to a voluntary pooling agreement or a compulsory pooling order heretofore entered by the division.	
	Signature <u>Sandra J. Belt</u> Printed Name Sandra J. Belt	
	Date 11-5-10	
NOTE: SURVEY CERTIFICATION IS FOR SURFACE LOCATION ONLY. LOWER BRUSY CANYON PENETRATION POINT Lot - N 32°11'12.01" Long - W 103°50'36.91" NMSPC - E 651511.378 (NAD-27) SURFACE LOCATION & DELAWARE PENETRATION POINT Lot - N 32°11'12.01" Long - W 103°50'36.91" NMSPC - E 651511.378 (NAD-27)	20 SURVEYOR CERTIFICATION	
	I hereby certify that the well location shown on this plat was plotted from field notes of actual surveys made by me or under my supervision, and that the same is true and correct to the best of my belief.	
	Date of Survey May 18, 1994 Signature and Seal of Professional Surveyor:	
Certificate No. Gary L. Jones 7977 BASIN SURVEYS		

DISTRICT I
1625 N. French Dr., Hobbs, NM 88240

DISTRICT II
1301 W. Grand Avenue, Artesia, NM 88210

DISTRICT III
1000 Rio Brazos Rd., Aztec, NM 87410

DISTRICT IV
1220 S. St. Francis Dr., Santa Fe, NM 87505

State of New Mexico
Energy, Minerals and Natural Resources Department

Form C-102
Revised July 16, 2010

Submit one copy to appropriate District Office

OIL CONSERVATION DIVISION
1220 South St. Francis Dr.
Santa Fe, New Mexico 87505

WELL LOCATION AND ACREAGE DEDICATION PLAT

AMENDED REPORT

API Number 30-015-39488	Pool Code 96046	Pool Name Poker Lake, NW (Delaware)
Property Code 306402	Property Name POKER LAKE UNIT	Well Number 344H
OGRID No. 260737	Operator Name BOPCO, L.P.	Elevation 3345'

Surface Location

UL or lot No.	Section	Township	Range	Lot Idn	Feet from the	North/South line	Feet from the	East/West line	County
N	26	24 S	30 E	35		SOUTH	1975	WEST	EDDY

Bottom Hole Location If Different From Surface

UL or lot No.	Section	Township	Range	Lot Idn	Feet from the	North/South line	Feet from the	East/West line	County
C	27	24 S	30 E	99		NORTH	2201	WEST	EDDY

Dedicated Acres	Joint or Infill	Consolidation Code	Order No.
280			SCR 10057

NO ALLOWABLE WILL BE ASSIGNED TO THIS COMPLETION UNTIL ALL INTERESTS HAVE BEEN CONSOLIDATED OR A NON-STANDARD UNIT HAS BEEN APPROVED BY THE DIVISION

BOTTOM HOLE LOCATION
Lat - N 32°11'44.35"
Long - W 103°52'11.98"
NMSPC - E 643327.61
(NAD-27)

SURFACE LOCATION
Lat - N 32°10'53.80"
Long - W 103°51'12.27"
NMSPC - E 648480.768
(NAD-27)

OPERATOR CERTIFICATION
I hereby certify that the information contained herein is true and complete to the best of my knowledge and belief, and that this organization either owns a working interest or undivided mineral interest in the land including the proposed bottom hole location or has a right to drill this well at this location pursuant to a contract with an owner of such a mineral or working interest, or to a voluntary pooling agreement or a compulsory pooling order heretofore entered by the division.

Signature: Sandra J. Belt Date: 6-7-12
Printed Name: Sandra J. Belt
Email Address: s.j.belt@basspet.com

SURVEYOR CERTIFICATION
I hereby certify that the well location shown on this plat was plotted from field notes of actual surveys made by me or under my supervision, and that the same is true and correct to the best of my belief.

Date Surveyed: 6-7-12
Signature & Seal of Professional Surveyor: GARY L. JONES
Certificate No. Gary L. Jones 7977
BASIN SURVEYS 24262

DISTRICT I
1625 N. French Dr., Hobbs, NM 88240

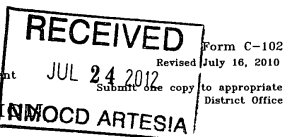
DISTRICT II
1301 W. Grand Avenue, Artesia, NM 88210

DISTRICT III
1000 Rio Brazos Rd., Aztec, NM 87410

DISTRICT IV
1220 S. St. Francis Dr., Santa Fe, NM 87505

State of New Mexico
Energy, Minerals and Natural Resources Department

OIL CONSERVATION DIVISION
1220 South St. Francis Dr.
Santa Fe, New Mexico 87505



WELL LOCATION AND ACREAGE DEDICATION PLAT

AMENDED REPORT

API Number 30-015-39488	Pool Code 96046	Pool Name Poker Lake, NW (Delaware)
Property Code 306402	Property Name POKER LAKE UNIT	Well Number 345H
OGRID No. 260737	Operator Name BOPCO, L.P.	Elevation 3356'

Surface Location

UL or lot No.	Section	Township	Range	Lot Idn	Feet from the	North/South line	Feet from the	East/West line	County
F	35	24 S	30 E		1350	NORTH	1550	WEST	EDDY

Bottom Hole Location If Different From Surface

UL or lot No.	Section	Township	Range	Lot Idn	Feet from the	North/South line	Feet from the	East/West line	County
F	27	24 S	30 E		2270	NORTH	2534	WEST	EDDY

Dedicated Acres	Joint or Infill	Consolidation Code	Order No.
320			

NO ALLOWABLE WILL BE ASSIGNED TO THIS COMPLETION UNTIL ALL INTERESTS HAVE BEEN CONSOLIDATED OR A NON-STANDARD UNIT HAS BEEN APPROVED BY THE DIVISION

BOTTOM HOLE LOCATION
Lat - N 32°11'22.90"
Long - W 103°52'08.06"
NMSPC - E 643041.52
E 643673.47
(NAD-27)

SURFACE LOCATION
Lat - N 32°10'40.08"
Long - W 103°51'17.09"
NMSPC - E 648072.772
(NAD-27)

OPERATOR CERTIFICATION
I hereby certify that the information contained herein is true and complete to the best of my knowledge and belief, and that this organization either owns a working interest or undivided mineral interest in the land including the proposed bottom hole location or has a right to drill this well at this location pursuant to a contract with an owner of such a mineral or working interest, or to a voluntary pooling agreement or a compulsory pooling order heretofore entered by the division.

Signature: Sandra J. Belt Date: 7-12-12
Printed Name: Sandra J. Belt
Email Address: s.j.belt@basspet.com

SURVEYOR CERTIFICATION
I hereby certify that the well location shown on this plat was plotted from field notes of actual surveys made by me or under my supervision, and that the same is true and correct to the best of my belief.

Date Surveyed: 7-12-12
Signature & Seal of Professional Surveyor: GARY L. JONES
Certificate No. Gary L. Jones 7977
BASIN SURVEYS 24263

DISTRICT I
1620 N. French Dr., Hobbs, NM 88240

DISTRICT II
1301 W. Grand Avenue, Artesia, NM 88210

DISTRICT III
1000 Rio Brazos Rd., Aztec, NM 87410

DISTRICT IV
1220 S. St. Francis Dr., Santa Fe, NM 87505

State of New Mexico
Energy, Minerals and Natural Resources Department

OIL CONSERVATION DIVISION
1220 South St. Francis Dr.
Santa Fe, New Mexico 87505

Form C-102
Revised July 16, 2010
Submit one copy to appropriate District Office

WELL LOCATION AND ACREAGE DEDICATION PLAT

☒ AMENDED REPORT

API Number 30-015-39480	Pool Code 96046	Pool Name Poker Lake, NW (Delaware)
Property Code 306402	Property Name POKER LAKE UNIT	Well Number 346H
OGRID No. 260737	Operator Name BOPCO, L.P.	Elevation 3373'

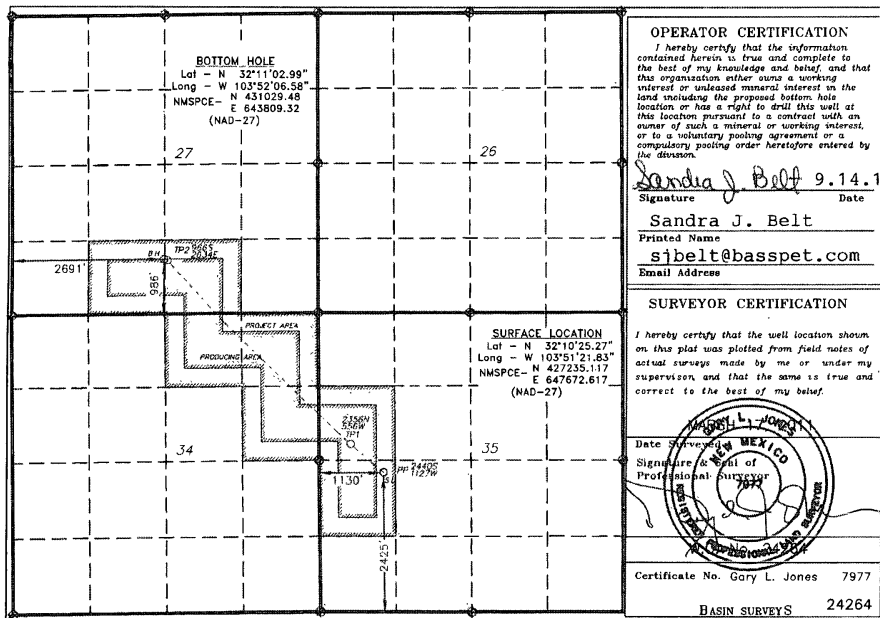
Surface Location

UL or lot No.	Section	Township	Range	Lot Idn	Feet from the	North/South line	Feet from the	East/West line	County
L	35	24 S	30 E		2425	SOUTH	1130	WEST	EDDY

Bottom Hole Location If Different From Surface

UL or lot No.	Section	Township	Range	Lot Idn	Feet from the	North/South line	Feet from the	East/West line	County
N	27	24 S	30 E		986	SOUTH	2658	WEST	EDDY
Dedicated Acres	Joint or Infill	Consolidation Code	Order No.						
280									

NO ALLOWABLE WILL BE ASSIGNED TO THIS COMPLETION UNTIL ALL INTERESTS HAVE BEEN CONSOLIDATED
OR A NON-STANDARD UNIT HAS BEEN APPROVED BY THE DIVISION



DISTRICT I
P.O. Box 1980, Hobbs, NM 88240

State of New Mexico
Energy, Minerals and Natural Resources Department

Form C-102
Revised February 10, 1994
Instruction on back
Submit to Appropriate District Office
State Lease - 4 Copies
Fee Lease - 3 Copies

DISTRICT II
P.O. Drawer DD, Artesia, NM 88210

DISTRICT III
1000 Rio Brazos Rd., Aztec, NM 87410

OIL CONSERVATION DIVISION

P.O. Box 2088
Santa Fe, New Mexico 87504-2088

☐ AMENDED REPORT

WELL LOCATION AND ACREAGE DEDICATION PLAT

API Number 30-015-29103	Pool Code 96047	Pool Name POKER LAKE (DELAWARE), SW
Property Code B-10685	Property Name Poker Lake Unit	Well Number 84
OGRID No. 001801	Operator Name Bass Enterprises Production Company	Elevation 3447'

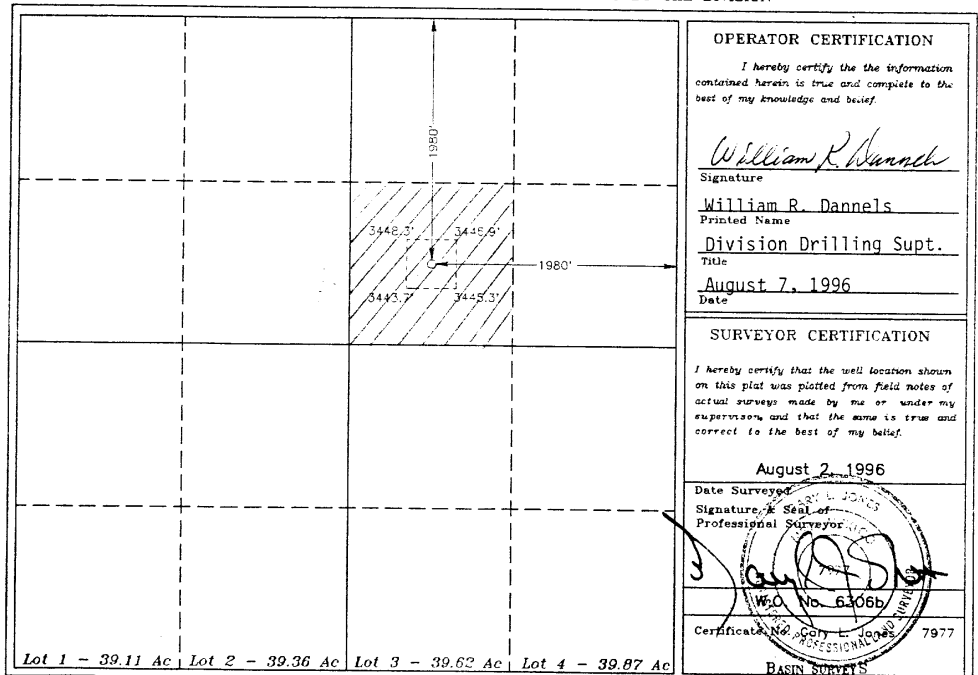
Surface Location

UL or lot No.	Section	Township	Range	Lot Idn	Feet from the	North/South line	Feet from the	East/West line	County
G	36	24 S	30 E		1980	North	1980	East	Eddy

Bottom Hole Location If Different From Surface

UL or lot No.	Section	Township	Range	Lot Idn	Feet from the	North/South line	Feet from the	East/West line	County
Dedicated Acres	Joint or Infill	Consolidation Code	Order No.						
40	Infill								

NO ALLOWABLE WILL BE ASSIGNED TO THIS COMPLETION UNTIL ALL INTERESTS HAVE BEEN CONSOLIDATED
OR A NON-STANDARD UNIT HAS BEEN APPROVED BY THE DIVISION



State of New Mexico
Energy, Minerals and Natural Resources Department

Form C-102
Revised 1-1-89

OIL CONSERVATION DIVISION

P.O. Box 2088

Santa Fe, New Mexico 87504-2088

Submit to Appropriate
District Office
State Lease - 4 copies
Fee Lease - 3 copies

DISTRICT I
P.O. Box 1980, Hobbs, NM 88240

DISTRICT II
P.O. Drawer DD, Artesia, NM 88210

DISTRICT III
1000 Rio Brazos Rd., Aztec, NM 87410

WELL LOCATION AND ACREAGE DEDICATION PLAT

All Distances must be from the outer boundaries of the section

Operator FORTSON OIL COMPANY			Lease POKER LAKE UNIT			Well No. 87		
Unit Letter B	Section 25	Township 24 SOUTH	Range 30 EAST	County NMPM	EDDY COUNTY, NM			
Actual Footage Location of Well:								
1880 feet from the EAST line and			610 feet from the NORTH line					
Ground level Elev. 3441.		Producing Formation Delaware		Pool Poker Lake		Dedicated Acreage: 40 Acres		
<p>1. Outline the acreage dedicated to the subject well by colored pencil or hatchure marks on the plat below.</p> <p>2. If more than one lease is dedicated to the well, outline each and identify the ownership thereof (both as to working interest and royalty).</p> <p>3. If more than one lease of different ownership is dedicated to the well, have the interest of all owners been consolidated by communitization, unitization, force-pooling, etc.? <input type="checkbox"/> Yes <input type="checkbox"/> No If answer is "yes" type of consolidation _____ If answer is "no" list the owners and tract descriptions which have actually been consolidated. (Use reverse side of this form if necessary.) No allowable will be assigned to the well until all interests have been consolidated (by communitization, unitization, forced-pooling, or otherwise) or until a non-standard unit, eliminating such interest, has been approved by the Division.</p>								
						<p>OPERATOR CERTIFICATION I hereby certify that the information contained herein is true and complete to the best of my knowledge and belief.</p> <p>Signature <i>Judy Dixon</i> Printed Name Judy Dixon Position Production Technician Company Fortson Oil Company Date 11/12/93</p>		
<p>SURVEYOR CERTIFICATION I hereby certify that the well location shown on this plat was plotted from field notes of actual surveys made by me or under my supervision, and that the same is true and correct to the best of my knowledge and belief.</p> <p>Date Surveyed NOVEMBER 1, 1993 Signature & Seal of Professional Surveyor </p>								

State of New Mexico
Energy, Minerals and Natural Resources Department

Form C-102
Revised 1-1-89

OIL CONSERVATION DIVISION

P.O. Box 2088

Santa Fe, New Mexico 87504-2088

Submit to Appropriate
District Office
State Lease - 4 copies
Fee Lease - 3 copies

DISTRICT I
P.O. Box 1980, Hobbs, NM 88240

DISTRICT II
P.O. Drawer DD, Artesia, NM 88210

DISTRICT III
1000 Rio Brazos Rd., Aztec, NM 87410

WELL LOCATION AND ACREAGE DEDICATION PLAT

All Distances must be from the outer boundaries of the section

Operator FORTSON OIL COMPANY			Lease POKER LAKE UNIT			Well No. 89		
Unit Letter G	Section 25	Township 24 SOUTH	Range 30 EAST	County NMPM	EDDY COUNTY, NM			
Actual Footage Location of Well:								
2310 feet from the NORTH line and			1980 feet from the EAST line					
Ground level Elev. 3435.		Producing Formation BRUSHY CANYON		Pool POKER LAKE		Dedicated Acreage: 40 Acres		
<p>1. Outline the acreage dedicated to the subject well by colored pencil or hatchure marks on the plat below.</p> <p>2. If more than one lease is dedicated to the well, outline each and identify the ownership thereof (both as to working interest and royalty).</p> <p>3. If more than one lease of different ownership is dedicated to the well, have the interest of all owners been consolidated by communitization, unitization, force-pooling, etc.? <input type="checkbox"/> Yes <input type="checkbox"/> No If answer is "yes" type of consolidation _____ If answer is "no" list the owners and tract descriptions which have actually been consolidated. (Use reverse side of this form if necessary.) No allowable will be assigned to the well until all interests have been consolidated (by communitization, unitization, forced-pooling, or otherwise) or until a non-standard unit, eliminating such interest, has been approved by the Division.</p>								
						<p>OPERATOR CERTIFICATION I hereby certify that the information contained herein is true and complete to the best of my knowledge and belief.</p> <p>Signature <i>Joe Igo</i> Printed Name JOE IGO Position AREA SUPERINTENDENT Company FORTSON OIL COMPANY Date NOVEMBER 24, 1993</p>		
<p>SURVEYOR CERTIFICATION I hereby certify that the well location shown on this plat was plotted from field notes of actual surveys made by me or under my supervision, and that the same is true and correct to the best of my knowledge and belief.</p> <p>Date Surveyed NOVEMBER 22, 1993 Signature & Seal of Professional Surveyor </p>								

DISTRICT I
1625 N. French St., Hobbs, NM 88240

DISTRICT II
511 South First, Artesia, NM 88210

DISTRICT III
1900 Rio Brazos Rd., Aztec, NM 87410

DISTRICT IV
2040 South Pacheco, Santa Fe, NM 87505

State of New Mexico
Energy, Minerals and Natural Resources Department

Form C-102
Revised March 17, 1990

Submit to Appropriate District Office
State Lease - 4 Copies
Fee Lease - 3 Copies

OIL CONSERVATION DIVISION

2040 South Pacheco
Santa Fe, New Mexico 87504-2088

☐ AMENDED REPORT

WELL LOCATION AND ACREAGE DEDICATION PLAT

API Number	Pool Code	Pool Name
	96047	POKER LAKE (DELAWARE), SW
Property Code	Property Name	Well Number
001796	POKER LAKE UNIT	102
OGHD No.	Operator Name	Elevation
001801	BEPCO, L.P.	3447

Surface Location

UL or lot No.	Section	Township	Range	Lot 1/4	Feet from the	North/South line	Feet from the	East/West line	County
C	25	24 S	30 E		1140	NORTH	2310	WEST	EDDY

Bottom Hole Location If Different From Surface

UL or lot No.	Section	Township	Range	Lot 1/4	Feet from the	North/South line	Feet from the	East/West line	County
Dedicated Acres	Joint or Infill	Consolidation Code	Order No.						
40	N								

NO ALLOWABLE WILL BE ASSIGNED TO THIS COMPLETION UNTIL ALL INTERESTS HAVE BEEN CONSOLIDATED
OR A NON-STANDARD UNIT HAS BEEN APPROVED BY THE DIVISION

40 ACRES	40 ACRES	160.00 ACRES	<p>OPERATOR CERTIFICATION</p> <p>I hereby certify the the information contained herein is true and complete to the best of my knowledge and belief.</p> <p><i>William R. Dannels</i> Signature W.R. DANNELS Printed Name DIVISION DRILLING SUPT. Title 6/30/86 Date</p> <p>SURVEYOR CERTIFICATION</p> <p>I hereby certify that the well location shown on this plat was plotted from field notes of actual surveys made by me or under my supervision, and that the same is true and correct to the best of my belief.</p> <p>MARSH L. JONES Date 6/30/86 Signature Professional Surveyor 7977 Certificate No. MARSH L. JONES 7977 JLP BASIN SURVEYS</p>
40 ACRES	40 ACRES	160.00 ACRES	
40 ACRES	40 ACRES	160.00 ACRES	
40 ACRES	40 ACRES	160.00 ACRES	

Submit to Appropriate
District Office
State Lease - 4 copies
Fee Lease - 3 copies

State of New Mexico
Energy, Minerals and Natural Resources Department

Form C-102
Revised 1-1-81

OIL CONSERVATION DIVISION

P.O. Box 2088
Santa Fe, New Mexico 87504-2088

DISTRICT I
P.O. Box 1980, Hobbs, NM 88240

DISTRICT II
P.O. Drawer DD, Artesia, NM 88210

DISTRICT III
1000 Rio Brazos Rd., Aztec, NM 87410

WELL LOCATION AND ACREAGE DEDICATION PLAT

All Distances must be from the outer boundaries of the section

Operator	BASS ENTERPRISES PROD. CO.	Lease	POKER LAKE UNIT	Well No.	103
Unit Letter	Section	Township	Range	County	
F	25	24 SOUTH	30 EAST	NMPH	EDDY
Actual Footage Location of Well:					
1980 feet from the NORTH line and		1980 feet from the WEST line			
Ground Level Elev.	Producing Formation	Pool	Dedicated Acreage:		
3432'	Delaware	Poker Lake (Delaware)	40	Acres	

- Outline the acreage dedicated to the subject well by colored pencil or hatchure marks on the plat below.
- If more than one lease is dedicated to the well, outline each and identify the ownership thereof (both as to working interest and royalty).
- If more than one lease of different ownership is dedicated to the well, have the interest of all owners been consolidated by communitization, unitization, force-pooling, etc.?

☐ Yes ☐ No If answer is "yes" type of consolidation _____

If answer is "no" list of owners and tract descriptions which have actually been consolidated. (Use reverse side of this form necessary.)

No allowable will be assigned to the well unit all interests have been consolidated (by communitization, unitization, forced-pooling, otherwise) or until a non-standard unit, eliminating such interest, has been approved by the Division.

	<p>OPERATOR CERTIFICATION</p> <p>I hereby certify the the information contained herein is true and complete to the best of my knowledge and belief.</p> <p><i>William R. Dannels</i> Signature William R. Dannels Printed Name Position Division Drilling Supt. Company Bass Enterprises Prod. Co. Date 3/24/94</p>
	<p>SURVEYOR CERTIFICATION</p> <p>I hereby certify that the well location shown on this plat was plotted from field notes of actual surveys made by me or under my supervision, and that the same is true and correct to the best of my knowledge and belief.</p> <p>Date Surveyed FEBRUARY 23, 1994 Signature & Seal of Professional Surveyor MARSH L. JONES 7977 Certificate No. MARSH L. JONES 7977 JLP BASIN SURVEYS</p>
	<p>Certified by RONALD J. EIDSON, 676 GARY L. JONES, 7977</p>
	<p>94-11-0343</p>

Submit to Appropriate
District Office
State Lease - 4 copies
Fee Lease - 3 copies

State of New Mexico
Energy, Minerals and Natural Resources Department

Form C-102
Revised 1-1-89

OIL CONSERVATION DIVISION

P.O. Box 2088
Santa Fe, New Mexico 87504-2088

DISTRICT I
P.O. Box 1980, Hobbs, NM 88240

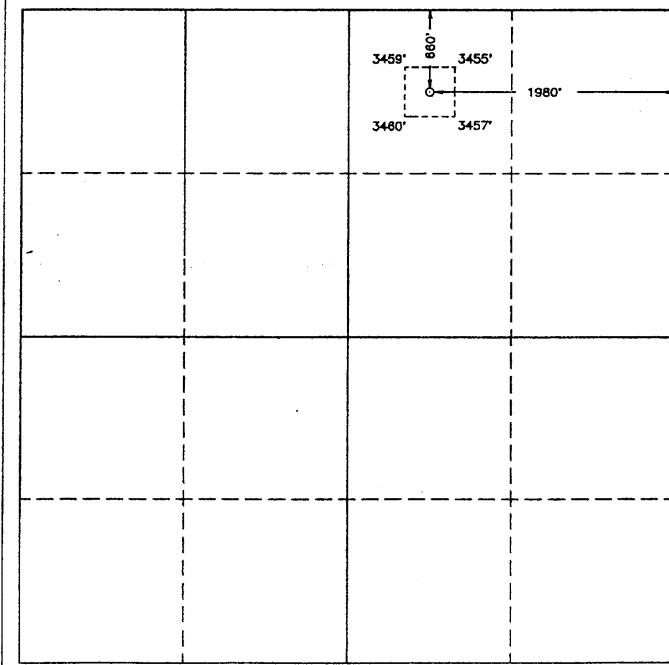
DISTRICT II
P.O. Drawer DD, Artesia, NM 88210

DISTRICT III
1000 Rio Brazos Rd., Aztec, NM 87410

WELL LOCATION AND ACREAGE DEDICATION PLAT

All Distances must be from the outer boundaries of the section

Operator BASS ENTERPRISES PRODUCTION COMPANY		Lease POKER LAKE UNIT		Well No. 105	
Unit Letter B	Section 36	Township 24 SOUTH	Range 30 EAST	County EDDY	
Actual Footage Location of Well:					
660 feet from the NORTH line and		1980 feet from the EAST line			
Ground Level Elev. 3460'	Producing Formation Delaware	Pool UVO Poker Lake (Delaware)	Dedicated Acreage: 40 Acres		
1. Outline the acreage dedicated to the subject well by colored pencil or hatchure marks on the plat below.					
2. If more than one lease is dedicated to the well, outline each and identify the ownership thereof (both as to working interest and royalty).					
3. If more than one lease of different ownership is dedicated to the well, have the interest of all owners been consolidated by communitization, unitization, force-pooling, etc.? <input type="checkbox"/> Yes <input type="checkbox"/> No If answer is "yes" type of consolidation _____					
If answer is "no" list of owners and tract descriptions which have actually been consolidated. (Use reverse side of this form necessary.)					
No allowable will be assigned to the well unit all interests have been consolidated (by communitization, unitization, forced-pooling, otherwise) or until a non-standard unit, eliminating such interest, has been approved by the Division.					



OPERATOR CERTIFICATION

I hereby certify that the information contained herein is true and complete to the best of my knowledge and belief.

Signature
William R. Dannels
Printed Name
William R. Dannels
Position
Division Drlg. Supt.
Company
Bass Enterprises Prod. Co.
Date
3/24/94

SURVEYOR CERTIFICATION

I hereby certify that the well location shown on this plat was plotted from field notes of actual surveys made by me or under my supervision, and that the same is true and correct to the best of my knowledge and belief.

Date Surveyed
MARCH 23, 1994
Signature & Seal
Professional Surveyor
7977
Certificate No.
JOHN W. WEST, 676
RONALD J. EIDSON, 3239
GARY L. JONES, 7977

94-11-0378

Submit to Appropriate
District Office
State Lease - 4 copies
Fee Lease - 3 copies

State of New Mexico
Energy, Minerals and Natural Resources Department

Form C-102
Revised 1-1-89

OIL CONSERVATION DIVISION

P.O. Box 2088
Santa Fe, New Mexico 87504-2088

DISTRICT I
P.O. Box 1980, Hobbs, NM 88240

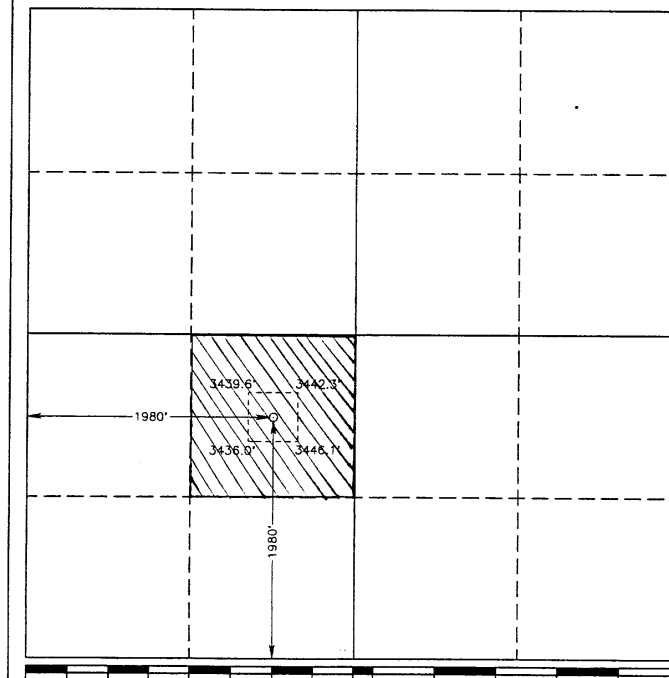
DISTRICT II
P.O. Drawer DD, Artesia, NM 88210

DISTRICT III
1000 Rio Brazos Rd., Aztec, NM 87410

WELL LOCATION AND ACREAGE DEDICATION PLAT

All Distances must be from the outer boundaries of the section

Operator BASS ENTERPRISES PROD. CO.		Lease POKER LAKE UNIT		Well No. 106	
Unit Letter K	Section 25	Township 24 SOUTH	Range 30 EAST	County EDDY	
Actual Footage Location of Well:					
1980 feet from the SOUTH line and		1980 feet from the WEST line			
Ground Level Elev. 3443'	Producing Formation Delaware	Pool Poker Lake (Delaware) UVO	Dedicated Acreage: 40 Acres		
1. Outline the acreage dedicated to the subject well by colored pencil or hatchure marks on the plat below.					
2. If more than one lease is dedicated to the well, outline each and identify the ownership thereof (both as to working interest and royalty).					
3. If more than one lease of different ownership is dedicated to the well, have the interest of all owners been consolidated by communitization, unitization, force-pooling, etc.? <input type="checkbox"/> Yes <input type="checkbox"/> No If answer is "yes" type of consolidation _____					
If answer is "no" list of owners and tract descriptions which have actually been consolidated. (Use reverse side of this form necessary.)					
No allowable will be assigned to the well unit all interests have been consolidated (by communitization, unitization, forced-pooling, otherwise) or until a non-standard unit, eliminating such interest, has been approved by the Division.					



OPERATOR CERTIFICATION

I hereby certify that the information contained herein is true and complete to the best of my knowledge and belief.

Signature
William R. Dannels
Printed Name
William R. Dannels
Position
Division Drilling Supt.
Company
Bass Enterprises Prod. Co.
Date
3/24/94

SURVEYOR CERTIFICATION

I hereby certify that the well location shown on this plat was plotted from field notes of actual surveys made by me or under my supervision, and that the same is true and correct to the best of my knowledge and belief.

Date Surveyed
FEBRUARY 23, 1994
Signature & Seal
Professional Surveyor
7977
Certificate No.
JOHN W. WEST, 676
RONALD J. EIDSON, 3239
GARY L. JONES, 7977

94-11-0344

CERTIFIED MAILINGS LIST
XTO PERMIAN OPERATING, LLC
POKER LAKE UNIT 89 BATTERY**70191640000164368677**

ANTHONY DUNN
12 NW EAGLE MOUNTAIN RD
LAWTON, OK73507-8926

70191640000164368707

BRETT G TAYLOR ROYALTY TRUST
REVOCABLE INTERVIVOS TRUST BRETT G
TAYLOR TRUSTEE
P O BOX 9
ALED0, TX76008-0000

70191640000164368738

CONOCOPHILLIPS COMPANY ATTN LEASE
GAS CASH RECEIPTS
315 S JOHNSTONE
BARTLESVILLE, OK74004

70191640000164368769

DAVID A DUNN JR
9721 E FRITO AVE
MESA, AZ85208-0000

70191640000164367014

FORTSON OIL COMPANY
306 W 7TH ST #901
FORT WORTH, TX76102-4929

70191640000164367045

JEFFREY M DUNN
1404 RICHARDS CIR
DESOTO, TX75115-0000

70191640000164367076

JOHN S TITTL DBA EXILE ROYALTY
COMPANY LLC
515 HOUSTON ST SUITE 631
FORT WORTH, TX76102-0000

70191640000164367106

MARY MARGARET EVANS TRUST NELSON T
EVANS TTEE
2249 JARVIS CT
THE VILLAGES, FL32162-0000

70191640000164367137

MORRIS E SCHERTZ AND HOLLY K SCHERTZ
H/W
PO BOX 2588
ROSWELL, NM88202-2588

70191640000164367168

PATRICIA A BECK
319 FRANCES COVE
SURFSIDE BCH, TX77541-0000

70191640000164368684

BARR FAMILY TRUST UWO RICHARD KEVIN
BARR BEVERLY JEAN RENFRO BARR TTEE
8027 CHALK KNOLL DR
AUSTIN, TX78735-0000

70191640000164368714

CHRISTOPHER I DUNN
91 MARSHA DR
ARTESIA, NM88210-0000

70191640000164368745

COURTENAY A TAYLOR ROYALTY TR
COURTENAY A TAYLOR TTEE
PO BOX 720429
DALLAS, TX75372-0000

70191640000164368776

DEVON ENERGY PRODUCTION CO LP
PO BOX 843559
DALLAS, TX75284-3559

70191640000164367021

ISABELLA J ROTELLA
7212 KALAMATH ST
DENVER, CO80221-0000

70191640000164367052

JENNIFER DUNN HIGHTOWER
2800 METZ DR
MIDLAND, TX79705-4921

70191640000164367083

MADISON M HINKLE
PO BOX 2292
ROSWELL, NM88202-2292

70191640000164367113

MIKE A KULENGUSKI
279 JONES MOUNTAIN ROAD
MADISON, VA22727-3348

70191640000164367144

NEW MEXICO COMMISSIONER OF PUBLIC
LANDS
NEW MEXICO STATE LAND OFFICE
FORT WORTH, TX76102-6223

70191640000164367175

PATRICK C DUNN
1011 TURNER ST
DALLAS, TX75208-0000

70191640000164368691

BEVERLY GAY NICHOLS
2207 SHEPHERDS RIDGE RD
CHARLOTTESVILLE, VA22901-0000

70191640000164368721

CLAIRE C JESSEE
8785 FM 910
BOGATA, TX75417-0000

70191640000164368752

DAVID A DUNN III
6800 N AMAHL DR
TUCSON, AZ85704-1211

70191640000164367007

FORTIS MINERALS II LLC
1111 BAGBY ST STE 2150
HOUSTON, TX77002-0000

70191640000164367038

JANICE CARPER BONDS
PO BOX 263
CORONA, NM88318-0263

70191640000164367069

JENNINGS LEE TRUST
PO BOX 20204
HOT SPRINGS, AR71903-0204

70191640000164367090

MARY ELLEN JOHNSTON
2715 N KENTUCKY APT 16
ROSWELL, NM88201-0000

70191640000164367120

MMS BRENHAM FEDERAL
C/O XTO ENERGY INC
FORT WORTH, TX76102-6298

70191640000164367151

PAISANO ROYALTY TRUST LLC
5128 APACHE PLUME RD STE300
FORT WORTH, TX76109-0000

70191640000164367182

RALPH ALBERT SHUGART TR DTD 05/26
WELLS FARGO TRUSTEE
C/O MICHAEL D MCCANNON CPA
DENVER, CO80246-0000

CERTIFIED MAILINGS LIST
XTO PERMIAN OPERATING, LLC
POKER LAKE UNIT 89 BATTERY

70191640000164367199

ROBERT A ROTELLA JR
5546 CROSS POND
SAN ANTONIO, TX78249

70191640000164367229

SHARON NELLIS RUBIN
8369 WEBSTER ST
ARVADA, CO80003-1634

70191640000164367250

TERESA DUNN TRACY
672 PITKIN WAY
CASTLE ROCK, CO80104-3267

70191640000164367281

WEST BEND ENERGY PARTNERS LLC
1320 S UNIVERSITY DR SUITE 701
FORT WORTH, TX76107-0000

40191640000164367205

ROSEANNE NELLIS JOHNSON
2950 JAY ST
DENVER, CO80214-0000

70191640000164367236

STANLEY ROGER CARPER II
802 N 13TH ST
LAKE ARTHUR, NM88253-0000

70191640000164367267

THE ALLEN FAMILY REV TRUST NANCY J
ALLEN TTEE
3623 OVERBROOK DR
DALLAS, TX75205-0000

70191640000164367298

HUGH C MONTGOMERY iii, MGR LAND
201 MAIN STREET
FORT WORTH, TX76102

70191640000164367212

SCOTT E WILSON BYPASS TRUST CYNTHI
M WILSON TTEE
4601 MIRADOR DRIVE
AUSTIN, TX78735-0000

70191640000164367243

SUSAN J CROFT
11700 PRESTON RD STE 660 PMB 390
DALLAS, TX75230-0000

70191640000164367274

THELMA NELLIS HAMM
7695 TURNER DR
DENVER, CO80221-0000

Per the attached letter, each of these entities have chosen to have notifications sent to one point of contact, Mr. Hugh C. Montgomery III:

- 2016 HYATT BASS FAM TR BMT II BPEOR NM LLC
- 2016 SAMANTHA BASS FAM TR BMT I BPEOR NM LLC
- 820MT I BPEOR NM LLC
- 820MT II BPEOR NM LLC
- CTV-CTAM BPEOR NM LLC
- CTV-LMB I BPEOR NM LLC
- CTV-LMB II BPEOR NM LLC
- CTV-SRB I BPEOR NM LLC
- CTV-SRB II BPEOR NM LLC
- FINE LINE BPEOR NM LLC
- KEYSTONE(CTAM) BPEOR NM LLC
- KEYSTONE(RMB) BPEOR NM LLC
- LMB I BPEOR NM LLC
- LMB II BPEOR NM LLC
- RMB BPEOR NM LLC
- SRBI I BPEOR NM LLC
- SRBI II BPEOR NM LLC
- SRBMT I BPEOR NM LLC
- SRBMT II BPEOR NM LLC
- THRU LINE BPEOR NM LLC
- WD I BPEOR NM LLC
- WD II BPEOR NM LLC

I, Chase Hare, do hereby certify the interest owners for the well(s) in the Poker Lake Unit 89 Battery were furnished a copy of XTO's application, via certified mail on this date.

Signed: 

Chase Hare

Title: Regulatory Advisor

Date: 3.10.20

BEPCO, L.P.
201 MAIN ST
FORT WORTH, TEXAS 76102-3131
817/390-8400

October 23, 2017

EMAIL/OVERNIGHT MAIL

XTO Energy Inc.
500 West Illinois, Suite 100
Midland, Texas 79701

Attn: Tracie J. Cherry

Re: New Mexico Regulatory Notifications

Dear Tracie,

Pursuant to our recent discussions concerning notifications required under the rules and regulations of the New Mexico Oil Conservation Division, or any other regulatory body as such situations occur, this letter is to advise you that all notifications can be sent to the following address:

BEPCO, L.P.
201 Main Street, Suite 3100
Fort Worth, Texas 76102
Attn: Hugh C. Montgomery III
Director of Land

This will be the designated representative for each of the entities listed below:

32 MINERAL I BPEOR NM, LLC;
32 MINERAL II BPEOR NM, LLC;
820MT I BPEOR NM, LLC;
820MT II BPEOR NM, LLC;
ACB BPEOR NM, LLC;
ARBGT (SRB) I BPEOR NM, LLC;
ARBGT (SRB) II BPEOR NM, LLC;
ARB-LMB PC I BPEOR NM, LLC;
ARB-LMB PC II BPEOR NM, LLC;
ARB-RMB PC BPEOR NM, LLC;
ARB-SRB PC I BPEOR NM, LLC;
ARB-SRB PC II BPEOR NM, LLC;
BMT I BPEOR NM, LLC;
BMT II BPEOR NM, LLC;
CAPITAL PARTNERSHIP (RMB) BPEOR, LLC;
CAPITAL PARTNERSHIP (CTAM) BPEOR, LLC;

SRBI I BPEOR NM, LLC;
SRBI II BPEOR NM, LLC;
SRBMT I BPEOR NM, LLC;
SRBMT II BPEOR NM, LLC;
SSB 1993C I BPEOR NM, LLC;
SSB 1993C II BPEOR NM, LLC;
THRU LINE BPEOR NM, LLC;
TRB BPEOR NM, LLC;
WD I BPEOR NM, LLC;
WD II BPEOR NM, LLC;
BOPCO-LMBI I BPEOR NM, LLC;
BOPCO-LMBI II BPEOR NM, LLC;
BOPCO-SRBI I BPEOR NM, LLC;
BOPCO-SRBI II BPEOR NM, LLC;
BOPCO-KEYSTONE (RMB) BPEOR NM, LLC;
BOPCO-KEYSTONE (CTAM) BPEOR NM, LLC;

CAPITAL PARTNERSHIP II (CTAM) BPEOR NM, LLC;
CMB BPEOR NM, LLC;
CTV-LMB I BPEOR NM, LLC;
CTV-LMB II BPEOR NM, LLC;
CTV-CTAM BPEOR NM, LLC;
CTV-SRB I BPEOR NM, LLC;
CTV-SRB II BPEOR NM, LLC;
EPB-PC BPEOR NM, LLC;
FINE LINE BPEOR NM, LLC;
GOLIAD- LMB I BPEOR NM, LLC;
GOLIAD-LMB II BPEOR NM, LLC;
GOLIAD-SRB I BPEOR NM, LLC;
GOLIAD-SRB II BPEOR NM, LLC;
KEYSTONE (RMB) BPEOR NM, LLC;
KEYSTONE (CTAM) BPEOR NM, LLC;
LMBI I BPEOR NM, LLC;
LMBI II BPEOR NM, LLC;
MLB BPEOR NM, LLC;
PRB II 1993C I BPEOR NM, LLC;
PRB II 1993C II BPEOR NM, LLC;
RFB 1993C I BPEOR NM, LLC;
RFB 1993C II BPEOR NM, LLC;
RMB BPEOR NM, LLC;
BOPCO-THRU LINE BPEOR NM, LLC;
DELBASIN-SRB I BPEOR NM, LLC;
DELBASIN-SRB II BPEOR NM, LLC;
DELBASIN-LMB I BPEOR NM, LLC;
DELBASIN-LMB II BPEOR NM, LLC;
DELBASIN-RMB BPEOR NM, LLC;
DELBASIN-EPB BPEOR NM, LLC;
PRB II 1993A I BPEOR, LLC;
PRB II 1993A II BPEOR, LLC;
RFB 1993A I BPEOR, LLC;
RFB 1993A II BPEOR, LLC;
SSB 1993A I BPEOR, LLC; and
SSB 1993A II BPEOR, LLC,
all Texas limited liability companies

In an effort to cut down on unnecessary paper, whenever there is more than one of the entities listed above involved, please send one notification which can be addressed to the affected entities as a group.

Should you have any questions concerning the above, please feel free to contact me at (817)390-8584.

Very truly yours,


Hugh C. Montgomery III
Director of Land
BEPCO, L.P.



Date: March 10, 2020

To: Dean McClure

From: Kaleigh Brady

Re: Forecasted Declines: Poker Lake Unit 89 Battery Wells

Eddy County, New Mexico

Regarding the application for a pool/lease commingle for the Poker Lake Unit 89 Battery wells (see table below), the production decline of the wells is in accordance with the production decline.

The ranges of decline and recommended testing schedule is:

- Four well tests per month while the decline rate is between 30-20% per month
- Three well tests per month while the decline rate is between 20-13% per month
- Two well tests per month while the decline rate is between 13-6% per month
- One well tests per month while the decline rate is between <6% per month

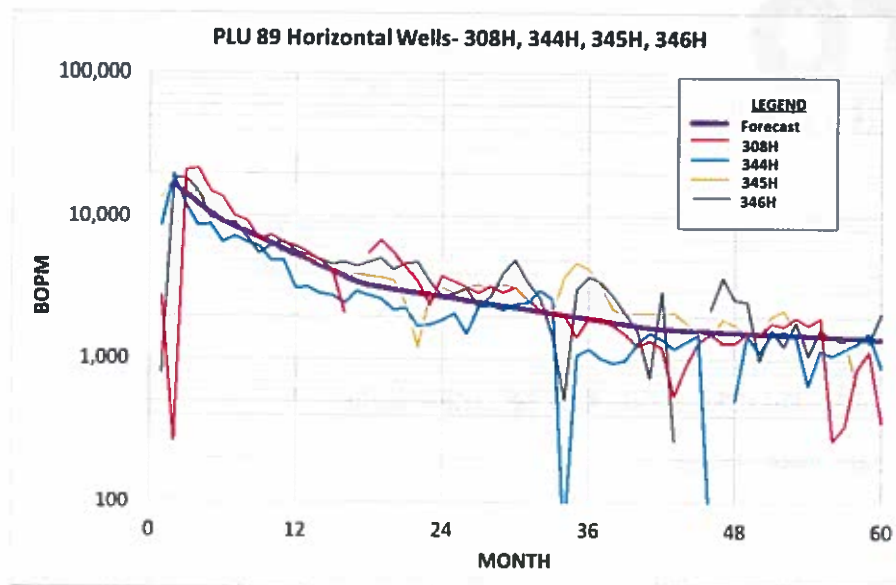
The twelve subject wells are mature producers (greater than 90 months of production) and have a current monthly decline of 6% or less. Therefore the recommended testing frequency for commingling per the well test method for these wells will be at least once a month for 24 hours. Summary detail of decline parameters for each well is also captured in tabular format shown on page 3.

Well Name	API
POKER LAKE UNIT #84	30-015-29103
POKER LAKE UNIT #87	30-015-27986
POKER LAKE UNIT #89	30-015-27787
POKER LAKE UNIT #102	30-015-35162
POKER LAKE UNIT #103	30-015-27919
POKER LAKE UNIT #105	30-015-27895
POKER LAKE UNIT #106	30-015-27920
POKER LAKE UNIT #111	30-015-28087
POKER LAKE UNIT #308H	30-015-37728
POKER LAKE UNIT #344H	30-015-39487
POKER LAKE UNIT #345H	30-015-39488
POKER LAKE UNIT #346H	30-015-39480

Kaleigh Brady

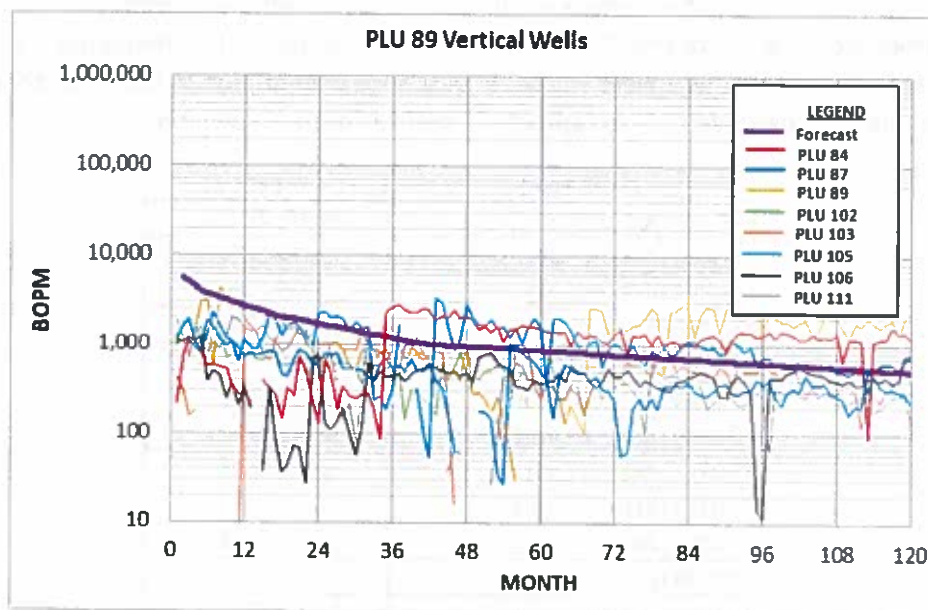
Reservoir Engineer

Delaware Basin Subsurface Team



t (months)	De (Annual)	Qi (bopm)	Qi (bopd)
4.00	0.85	18,000	592
12.00	0.65	9,564	314
24.00	0.30	3,347	110
	0.10	1,640	54

Figure 1: 3 Step Exponential Decline Curve for PLU 89 BTY Horizontal wells (PLU 308H, 344H, 345H, 346H) Brushy Canyon, 5k LL



t (months)	De (Annual)	Qi (bopm)	Qi (bopd)
4.00	0.75	6,000	197
12.00	0.45	3,780	124
24.00	0.30	2,079	68
	0.10	1,019	33

Figure 2: 3 Step Exponential Decline Forecast for PLU 89 BTY Vertical wells (PLU 84, PLU 87, PLU 89, PLU 102, PLU 103, PLU 105, PLU 106, PLU 111), Delaware

Well Name	API	Zone	Gross Lateral Length, ft	# Prod Months	Current Monthly Decline Rate, %	Testing Frequency
POKER LAKE UNIT #84	30-015-29103	Delaware	-	259	.878	Test monthly for 24 hours
POKER LAKE UNIT #87	30-015-27986	Delaware	-	297	.878	Test monthly for 24 hours
POKER LAKE UNIT #89	30-015-27787	Delaware	-	310	.878	Test monthly for 24 hours
POKER LAKE UNIT #102	30-015-35162	Delaware	-	304	.878	Test monthly for 24 hours
POKER LAKE UNIT #103	30-015-27919	Delaware	-	155	.878	Test monthly for 24 hours
POKER LAKE UNIT #105	30-015-27895	Delaware	-	304	.878	Test monthly for 24 hours
POKER LAKE UNIT #106	30-015-27920	Delaware	-	289	.878	Test monthly for 24 hours
POKER LAKE UNIT #111	30-015-28087	Delaware	-	271	.878	Test monthly for 24 hours
POKER LAKE UNIT #308H	30-015-37728	Bushy Canyon	4,945	113	.878	Test monthly for 24 hours
POKER LAKE UNIT #344H	30-015-39487	Bushy Canyon	6,405	92	.878	Test monthly for 24 hours
POKER LAKE UNIT #345H	30-015-39488	Bushy Canyon	5,483	91	.878	Test monthly for 24 hours
POKER LAKE UNIT #346H	30-015-39480	Bushy Canyon	4,587	88	.878	Test monthly for 24 hours

Table 1: Summary Detail for PLU 89 Battery Wells

Well	Prod. Start	Cumulative		
		Oil	Gas	Wtr
Poker Lake Unit				
84*	2/22/97	206,465	250,873	541,027
87**	10/16/94	87,199	227,522	935,523
89	3/1/94	428,251	362,326	947,979
102	12/1/06	54,499	94,795	414,271
103	9/1/94	117,280	184,855	751,810
105	10/17/95	182,379	280,195	826,262
106	6/13/97	82,119	149,623	864,038
111	11/14/94	96,083	209,215	897,681
308H	8/13/10	269,807	1,093,701	1,833,634
344H	5/1/12	248,012	1,182,750	1,491,639
345H	6/9/12	277,336	985,430	1,238,134
346H*	7/30/12	249,072	948,088	1,327,401

Past 6 Months Production																						
January				December				November				October				September				August		
O	G	W		O	G	W		O	G	W		O	G	W		O	G	W		O	G	W
													0									
755	320	320		0	0	0		0	0	0		0	0	0		0	0	0		0	0	0
0	0	0		0	0	0		0	0	0		0	0	0		0	0	0		0	0	0
474	661	2,809		565	655	3,492		552	340	2,995		513	446	2,696		575	379	3,205		739	816	3,903
0	0	0		0	0	0		0	0	0		23	38	241		255	408	3,177		311	481	3,208
315	252	718		526	284	1,129		311	299	1,326		262	322	1,885		156	260	926		173	178	1,174
0	0	0		0	0	0		105	35	1,117		220	432	1,748		241	423	2,242		291	911	3,646
191	341	2,826		270	318	3,734		173	522	3,279		228	429	2,856		241	366	3,544		363	662	3,952
0	0	0		0	0	0		362	524	2,645		207	340	2,640		209	188	2,402		281	1,374	2,951
363	5,077	5,733		522	7,324	9,718		437	5,572	6,363		331	4,585	4,486		397	5,151	6,658		551	7,132	8,880
728	5,800	8,371		1,010	7,432	11,666		594	5,084	7,170		914	5,447	9,947		886	5,399	11,644		1,044	10,045	16,263
393	1,248	3,051		500	1,731	3,831		489	1,591	3,401		377	1,274	2,264		305	1,179	2,288		366	1,122	2,794
0	0	0		0	0	0		0	0	0		909	6,755	6,976		892	5,093	7,353		868	2,305	8,050