



United States Department of the Interior



BUREAU OF LAND MANAGEMENT
Wyoming State Office Reservoir Management Group
2987 Prospector Drive
Casper, Wyoming 82604-2968

In Reply Refer To:
3186
(3186.1)
Poker Lake Unit
NMNM71016X

DEC 05 2019

XTO Energy, Inc.
Attn: Blake Hueske
Land Dept. Loc. 115
22777 Springwoods Village Pkwy
Spring, TX 77389-1425

Re: Initial Delaware Formation Participating Area "I"
Poker Lake Unit
Eddy County, New Mexico

Gentlemen:

The Initial Delaware Formation Participating Area "I" is hereby approved effective as of December 28, 2011, pursuant to Section 11 of the Poker Lake Unit Agreement, Eddy County, New Mexico. This participating area has been designated NMNM71016AF.

The application establishes an Initial Delaware Formation Participating Area "I" of 520.80 acres and is based upon the completion of unit well 347H, located in the NE $\frac{1}{4}$ NW $\frac{1}{4}$ (SHL) of Section 11, T.25S., R.30E., unit tract No. 34A, Lease No. NMLC063873A and in the SW $\frac{1}{4}$ NE $\frac{1}{4}$ (BHL) of Section 3, T.25S., R.30E., unit tract No. 19A, Lease No. NMLC061616A, with an unknown initial potential on December 28, 2011, from the Delaware Formation.

Copies of the approved request are being distributed to the appropriate agencies and one copy of Exhibits "A" and "B" are returned herewith. Please advise all interested parties of the approval of the Initial Delaware Formation Participating Area "I" effective as of December 28, 2011.

Any production royalties that are due must be reported and paid within 30 days of the Bureau of Land Management's approval date or the payors will be assessed interest for late payment under the Federal Oil and Gas Royalty Management Act of 1982 (30 CFR 218.54). If you need assistance or clarification, please contact the Office of Natural Resources Revenue (ONRR) at 1-800-525-9167 or 303-231-3856.

If you have any questions, please call the undersigned at (307) 261-7685.

Sincerely,

A handwritten signature in black ink, appearing to read "J. David Chase". The signature is fluid and cursive, with a long horizontal stroke at the end.

J. David Chase
Chief, Reservoir Management Group

1 Enclosure

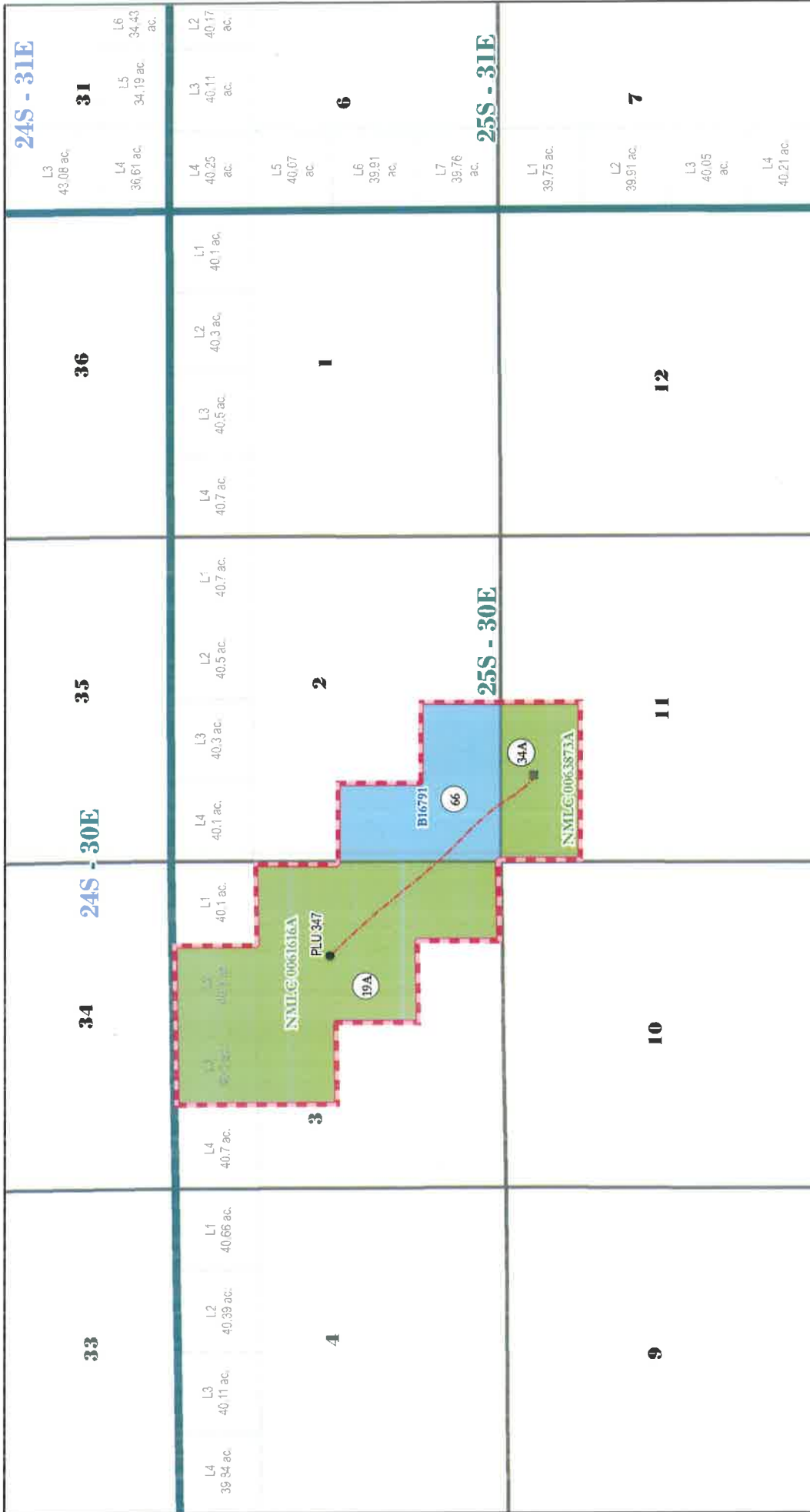
Encl. 1 - Exhibits "A" and "B"

cc: NMSO, James Glover w/exhibits A & B
ONRR-RRM (email: leases.blm@onrr.gov) w/exhibits A & B
New Mexico State Land Office, Scott Dawson w/exhibits A & B
New Mexico Oil Conservation Division, William Jones w/exhibits A & B

EXHIBIT "A"
INITIAL DELAWARE PARTICIPATING AREA "I"
PLU 347H, POKER LAKE UNIT
EDDY COUNTY, NM
EFFECTIVE DECEMBER 28, 2011



Date: 12/2/2019



- POKER LAKE UNIT
- CAPABLE WELL (BHL)
- CAPABLE WELL (SHL)
- CAPABLE WELLBORE
- PROPOSED DELAWARE PA T
- STATE ACREAGE WITHIN PA
- FEDERAL ACREAGE WITHIN PA



RECEIVED 12/02/19 09:44 AM

EXHIBIT "B"

SCHEDULE OF LANDS AND TRACT PARTICIPATION
INITIAL DELAWARE FORMATION PARTICIPATING AREA "I"

POKER LAKE UNIT
EDDY COUNTY, NEW MEXICO
EFFECTIVE DECEMBER 28, 2011

Tract No.	Lease No.	Description	Acres	Participation
19A	NMLC061616A Federal	Township 25 South - Range 30 East, N.M.P.M. Section 3: Lots 2 and 3, S/2NE/4, SE/4NW/4, W/2SE/4; SE/4SE/4	320.80	61.5975%
34A	NMLC063873A Federal	Township 25 South - Range 30 East, N.M.P.M. Section 11: N/2NW/4	80.00	15.3610%
66	B106790001 State	Township 25 South - Range 30 East, N.M.P.M. Section 2: Lot NW/4SW/4; S/2SW/4	120.00	23.0415%
Totals:			520.80	100.00000%

TYPE OF LAND	COMMITTED ACRES	NON-COMMITTED ACRES	PERCENT
FEDERAL	400.80	0.00	76.9585%
STATE	120.00	0.00	23.0415%
PATENTED	0.00	0.00	0.0000%
TOTAL	520.80	0.00	100.00000%

RECEIVED 12/28/11 11:41 AM BY FIELD OFFICE