

RECEIVED: 10/13/20	REVIEWER: DM	TYPE: OLM	APP NO: pDM2028756659
--------------------	--------------	-----------	-----------------------

ABOVE THIS TABLE FOR OCD DIVISION USE ONLY

**NEW MEXICO OIL CONSERVATION DIVISION**  
 - Geological & Engineering Bureau -  
 1220 South St. Francis Drive, Santa Fe, NM 87505



**ADMINISTRATIVE APPLICATION CHECKLIST**

THIS CHECKLIST IS MANDATORY FOR ALL ADMINISTRATIVE APPLICATIONS FOR EXCEPTIONS TO DIVISION RULES AND  
 REGULATIONS WHICH REQUIRE PROCESSING AT THE DIVISION LEVEL IN SANTA FE

<b>Applicant:</b> COG Operating, LLC	<b>OGRID Number:</b> 229137
<b>Well Name:</b> Airbus 12 Federal 2H & 3H	<b>API:</b> 30-015-39503 / 30-015-42412
<b>Pool:</b> Greenwood; Bone Spring	<b>Pool Code:</b> 29290

**SUBMIT ACCURATE AND COMPLETE INFORMATION REQUIRED TO PROCESS THE TYPE OF APPLICATION  
 INDICATED BELOW**

**1) TYPE OF APPLICATION:** Check those which apply for [A]

A. Location - Spacing Unit - Simultaneous Dedication

☐ NSL      ☐ NSP (PROJECT AREA)      ☐ NSP (PRORATION UNIT)      ☐ SD

B. Check one only for [I] or [II]

[I] Commingling - Storage - Measurement

☐ DHC    ☐ CTB    ☐ PLC    ☐ PC    ☐ OLS    ☒ OLM

[II] Injection - Disposal - Pressure Increase - Enhanced Oil Recovery

☐ WFX    ☐ PMX    ☐ SWD    ☐ IPI    ☐ EOR    ☐ PPR

**2) NOTIFICATION REQUIRED TO:** Check those which apply.

A. ☐ Offset operators or lease holders

B. ☒ Royalty, overriding royalty owners, revenue owners

C. ☐ Application requires published notice

D. ☐ Notification and/or concurrent approval by SLO

E. ☒ Notification and/or concurrent approval by BLM

F. ☐ Surface owner

G. ☐ For all of the above, proof of notification or publication is attached, and/or,

H. ☐ No notice required

**FOR OCD ONLY**

☐ Notice Complete  
☐ Application  
 Content  
 Complete

**3) CERTIFICATION:** I hereby certify that the information submitted with this application for administrative approval is **accurate** and **complete** to the best of my knowledge. I also understand that **no action** will be taken on this application until the required information and notifications are submitted to the Division.

**Note: Statement must be completed by an individual with managerial and/or supervisory capacity.**

Jeanette Barron

Print or Type Name

*Jeanette Barron*  
 Signature

Date

10/13/20

575-746-6974

Phone Number

jbarron@concho.com

e-mail Address



October 13, 2020

Attn: Dean McClure  
NM Oil Conservation Division  
1220 South Saint Francis Drive  
Santa Fe, New Mexico 87505

Re: Application for Administrative Approval  
Off-lease Measurement – Oil Only

Dear Mr. McClure,

COG Operating LLC respectfully requests approval for off-lease measurement – Oil only for the following wells:

Airbus 12 Federal 2H  
API# 30-015-39503  
Greenwood; Bone Spring  
Ut. D, Sec. 12-T19S-R31E  
Eddy County, NM

Airbus 12 Federal 3H  
API# 30-015-42412  
Greenwood; Bone Spring  
Ut. N, Sec. 12-T19S-R31E  
Eddy County, NM

**Oil Production:**

The oil production from these wells may be transported by truck to either the Red Hills Offload Station, located in Unit O, Section 4-T26S-R32E, or the Jal Offload Station, located in Unit D, Section 4-T26S-R37E, Lea County in the event the CTB on lease is over capacity or in the case of battery or pipeline repairs. Oil will remain segregated and will be measured by lact meter when offloading at the Offload Stations.

Notifications have been sent to all working interest owners

Please see the enclosed Administrative Application Checklist, C-107-B Application for Off Lease Measurement, plats for referenced wells, site facility diagram, maps with lease boundaries showing wells and facility locations.

Thank you for your attention to this matter. If you have questions or need further information, please email me at [jbarron@concho.com](mailto:jbarron@concho.com) or call 575.748.6974.

Sincerely,

A handwritten signature in black ink that reads "Jeanette Barron".  
Jeanette Barron  
Regulatory Technician II

**CORPORATE ADDRESS**

One Concho Center | 600 West Illinois Avenue | Midland, Texas 79701  
P 432.683.7443 | F 432.683.7441

**ARTESIA WEST OFFICE**

2208 Main Street | Artesia, New Mexico 88210  
P 575.748.6940 | F 575.746.2096

District I  
1625 N. French Drive, Hobbs, NM 88240  
District II  
811 S. First St., Artesia, NM 88210  
District III  
1000 Rio Brazos Road, Aztec, NM 87410  
District IV  
1220 S. St Francis Dr, Santa Fe, NM  
87505

State of New Mexico  
Energy, Minerals and Natural Resources Department

Form C-107-B  
Revised August 1, 2011

**OIL CONSERVATION DIVISION**  
1220 S. St Francis Drive  
Santa Fe, New Mexico 87505

Submit the original  
application to the Santa Fe  
office with one copy to the  
appropriate District Office.

**APPLICATION FOR SURFACE COMMINGLING (DIVERSE OWNERSHIP)**

OPERATOR NAME: COG Operating LLC  
OPERATOR ADDRESS: 2208 W Main Street, Artesia, New Mexico 88210  
APPLICATION TYPE:

☐ Pool Commingling ☐ Lease Commingling ☐ Pool and Lease Commingling ☒ Off-Lease Storage and Measurement (Only if not Surface Commingled)

LEASE TYPE: ☐ Fee ☐ State ☒ Federal

Is this an Amendment to existing Order? ☐ Yes ☐ No If "Yes", please include the appropriate Order No. \_\_\_\_\_  
Have the Bureau of Land Management (BLM) and State Land office (SLO) been notified in writing of the proposed commingling  
☐ Yes ☐ No

**(A) POOL COMMINGLING**  
Please attach sheets with the following information

(1) Pool Names and Codes	Gravities / BTU of Non-Commingled Production	Calculated Gravities / BTU of Commingled Production		Calculated Value of Commingled Production	Volumes

- (2) Are any wells producing at top allowables? ☐ Yes ☐ No  
(3) Has all interest owners been notified by certified mail of the proposed commingling? ☐ Yes ☐ No.  
(4) Measurement type: ☐ Metering ☐ Other (Specify)  
(5) Will commingling decrease the value of production? ☐ Yes ☐ No If "yes", describe why commingling should be approved

**(B) LEASE COMMINGLING**  
Please attach sheets with the following information

- (1) Pool Name and Code.  
(2) Is all production from same source of supply? ☐ Yes ☐ No  
(3) Has all interest owners been notified by certified mail of the proposed commingling? ☐ Yes ☐ No  
(4) Measurement type: ☐ Metering ☐ Other (Specify)

**(C) POOL and LEASE COMMINGLING**  
Please attach sheets with the following information

- (1) Complete Sections A and E.

**(D) OFF-LEASE STORAGE and MEASUREMENT**  
Please attached sheets with the following information

- (1) Is all production from same source of supply? ☒ Yes ☐ No  
(2) Include proof of notice to all interest owners.

**(E) ADDITIONAL INFORMATION (for all application types)**  
Please attach sheets with the following information

- (1) A schematic diagram of facility, including legal location.  
(2) A plat with lease boundaries showing all well and facility locations. Include lease numbers if Federal or State lands are involved.  
(3) Lease Names, Lease and Well Numbers, and API Numbers.

I hereby certify that the information above is true and complete to the best of my knowledge and belief.

SIGNATURE: Jeanette Barron

TITLE: Regulatory Technician II

DATE: 10/13/20

TYPE OR PRINT NAME Jeanette Barron TELEPHONE NO.: 575.748.6974

E-MAIL ADDRESS: jbarron@concho.com

District I  
1625 N. French Dr., Hobbs, NM 88240  
Phone: (575) 393-6161 Fax: (575) 393-0720  
District II  
811 S. First St., Artesia, NM 88210  
Phone: (575) 748-1283 Fax: (575) 748-9720  
District III  
1000 Rio Brazos Road, Aztec, NM 87410  
Phone: (505) 334-6178 Fax: (505) 334-6170  
District IV  
1220 S. St. Francis Dr., Santa Fe, NM 87505  
Phone: (505) 476-3460 Fax: (505) 476-3462

State of New Mexico  
Energy, Minerals & Natural Resources Department  
**OIL CONSERVATION DIVISION**  
1220 South St. Francis Dr.  
Santa Fe, NM 87505

Form C-102  
Revised August 1, 2011  
Submit one copy to appropriate  
District Office  
☐ AMENDED REPORT  
(As Drilled)

**WELL LOCATION AND ACREAGE DEDICATION PLAT**

<sup>1</sup> API Number <b>30-015-42412</b>		<sup>2</sup> Pool Code <b>29290</b>	<sup>3</sup> Pool Name <b>Greenwood; Bone Spring</b>
<sup>4</sup> Property Code <b>38871</b>	<sup>5</sup> Property Name <b>Airbus 12 Federal</b>		<sup>6</sup> Well Number <b>3H</b>
<sup>7</sup> OGRID No. <b>229137</b>	<sup>8</sup> Operator Name <b>COG Operating LLC</b>		<sup>9</sup> Elevation <b>3601' GR</b>

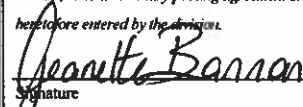
<sup>10</sup> Surface Location

UL or lot no. <b>N</b>	Section <b>12</b>	Township <b>19S</b>	Range <b>31E</b>	Lot Idn	Feet from the <b>190</b>	North/South line <b>South</b>	Feet from the <b>1980</b>	East/West line <b>West</b>	County <b>Eddy</b>
---------------------------	----------------------	------------------------	---------------------	---------	-----------------------------	----------------------------------	------------------------------	-------------------------------	-----------------------

<sup>11</sup> Bottom Hole Location If Different From Surface

UL or lot no. <b>C</b>	Section <b>12</b>	Township <b>19S</b>	Range <b>31E</b>	Lot Idn	Feet from the <b>341</b>	North/South line <b>North</b>	Feet from the <b>1967</b>	East/West line <b>West</b>	County <b>Eddy</b>
<sup>12</sup> Dedicated Acres <b>160</b>	<sup>13</sup> Joint or Infill	<sup>14</sup> Consolidation Code	<sup>15</sup> Order No.						

No allowable will be assigned to this completion until all interests have been consolidated or a non-standard unit has been approved by the division.

<div><div>16</div><div>1967'</div><div>1980'</div><div><div><div>BHL</div><div>SHL</div></div><div>Producing Area 9280-13528'</div></div></div>	<div><div><sup>17</sup> OPERATOR CERTIFICATION</div><div><i>I hereby certify that the information contained herein is true and complete to the best of my knowledge and belief, and that this organization either owns a working interest or unleased mineral interest in the land including the proposed bottom hole location or has a right to drill this well at this location pursuant to a contract with an owner of such a mineral or working interest, or to a voluntary pooling agreement or a compulsory pooling order heretofore entered by the division.</i></div><div><div> Signature</div><div><div>10/13/20 Date</div></div><div><div>Jeanette Barron Printed Name</div></div><div><div>jbarron@concho.com E-mail Address</div></div></div></div>	
	<div><div><sup>18</sup> SURVEYOR CERTIFICATION</div><div><i>I hereby certify that the well location shown on this plat was plotted from field notes of actual surveys made by me or under my supervision, and that the same is true and correct to the best of my belief.</i></div><div><div>Date of Survey</div><div>Signature and Seal of Professional Surveyor:</div></div><div><div>REFER TO ORIGINAL PLAT</div></div><div><div>Certificate Number</div></div></div>	

District I  
1625 N. French Dr., Hobbs, NM 88240  
Phone: (575) 393-6161 Fax: (575) 393-0720  
District II  
811 S. First St., Artesia, NM 88210  
Phone: (575) 748-1283 Fax: (575) 748-9720  
District III  
1000 Rio Brazos Road, Aztec, NM 87410  
Phone: (505) 334-6178 Fax: (505) 334-6170  
District IV  
1220 S. St. Francis Dr., Santa Fe, NM 87505  
Phone: (505) 476-3460 Fax: (505) 476-3462

State of New Mexico  
Energy, Minerals & Natural Resources Department  
OIL CONSERVATION DIVISION  
1220 South St. Francis Dr.  
Santa Fe, NM 87505

Form C-102  
Revised August 1, 2011  
Submit one copy to appropriate  
District Office  
☐ AMENDED REPORT

WELL LOCATION AND ACREAGE DEDICATION PLAT

<sup>1</sup> API Number <b>30-015-39503</b>	<sup>2</sup> Pool Code <b>29290</b>	<sup>3</sup> Pool Name <b>Greenwood; Bone Spring</b>
<sup>4</sup> Property Code <b>38871</b>	<sup>5</sup> Property Name <b>Airbus 12 Federal</b>	<sup>6</sup> Well Number <b>2H</b>
<sup>7</sup> OGRID No. <b>229137</b>	<sup>8</sup> Operator Name <b>COG Operating LLC</b>	<sup>9</sup> Elevation <b>3615' GR</b>

<sup>10</sup> Surface Location

UL or lot no. <b>D</b>	Section <b>12</b>	Township <b>19S</b>	Range <b>31E</b>	Lot Idn	Feet from the <b>330</b>	North/South line <b>North</b>	Feet from the <b>330</b>	East/West line <b>West</b>	County <b>Eddy</b>
---------------------------	----------------------	------------------------	---------------------	---------	-----------------------------	----------------------------------	-----------------------------	-------------------------------	-----------------------

<sup>11</sup> Bottom Hole Location If Different From Surface

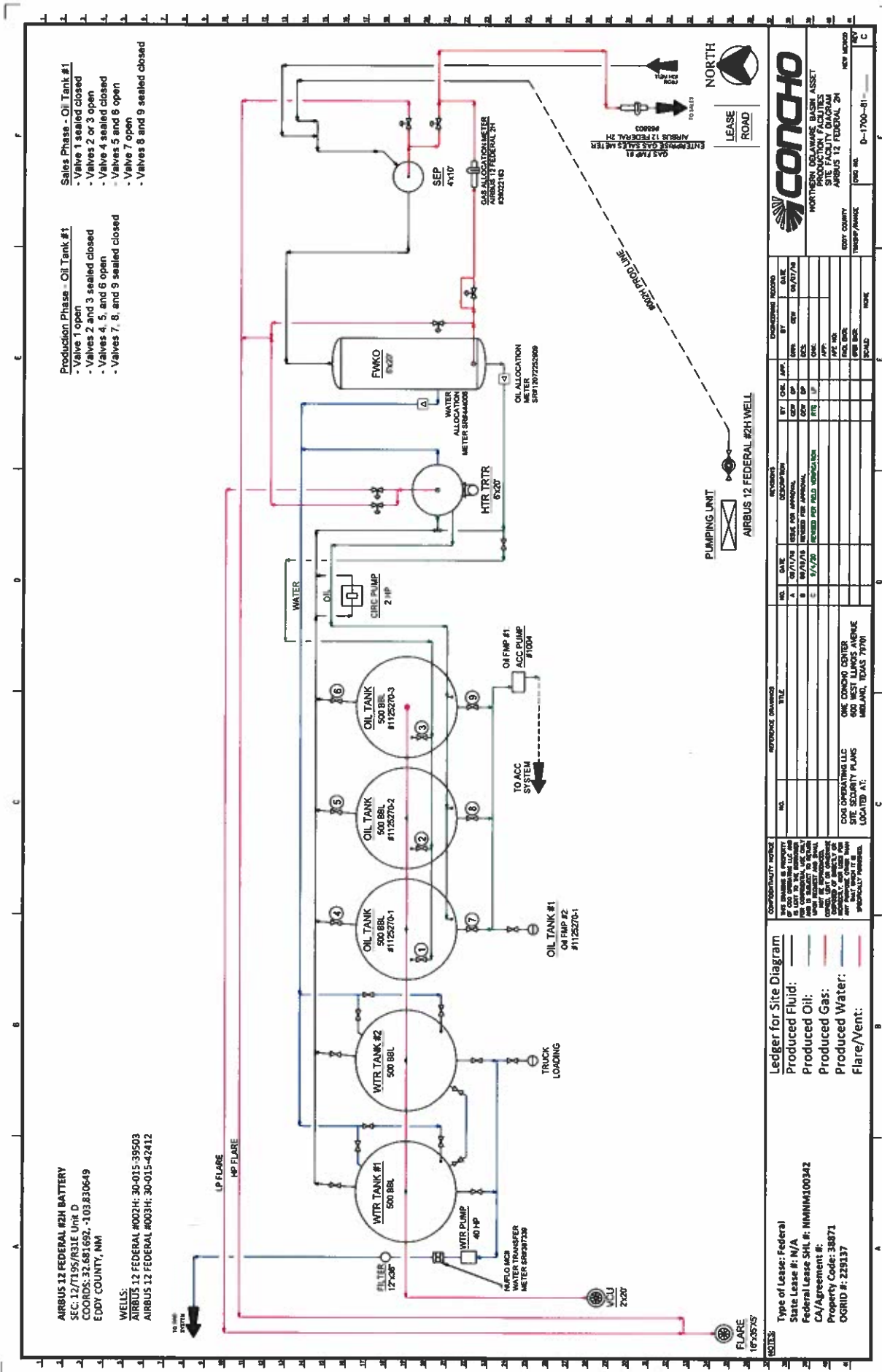
UL or lot no. <b>M</b>	Section <b>12</b>	Township <b>19S</b>	Range <b>31E</b>	Lot Idn	Feet from the <b>333</b>	North/South line <b>South</b>	Feet from the <b>426</b>	East/West line <b>West</b>	County <b>Eddy</b>
---------------------------	----------------------	------------------------	---------------------	---------	-----------------------------	----------------------------------	-----------------------------	-------------------------------	-----------------------

<sup>12</sup> Dedicated Acres <b>160</b>	<sup>13</sup> Joint or Infill	<sup>14</sup> Consolidation Code	<sup>15</sup> Order No.
---	-------------------------------	----------------------------------	-------------------------

No allowable will be assigned to this completion until all interests have been consolidated or a non-standard unit has been approved by the division.

16				<p><b><sup>17</sup> OPERATOR CERTIFICATION</b></p> <p><i>I hereby certify that the information contained herein is true and complete to the best of my knowledge and belief, and that this organization either owns a working interest or unleased mineral interest in the land including the proposed bottom hole location or has a right to drill this well at this location pursuant to a contract with an owner of such a mineral or working interest or to a voluntary pooling agreement or a compulsory pooling order heretofore entered by the division.</i></p> <p><u>Jeanette Barron</u> 10/13/20 Signature Date</p> <p>Jeanette Barron Printed Name</p> <p>jbarron@concho.com E-mail Address</p>
				<p><b><sup>18</sup> SURVEYOR CERTIFICATION</b></p> <p><i>I hereby certify that the well location shown on this plat was plotted from field notes of actual surveys made by me or under my supervision, and that the same is true and correct to the best of my belief.</i></p> <p>Date of Survey Signature and Seal of Professional Surveyor:</p> <p>REFER TO ORIGINAL PLAT</p> <p>Certificate Number</p>



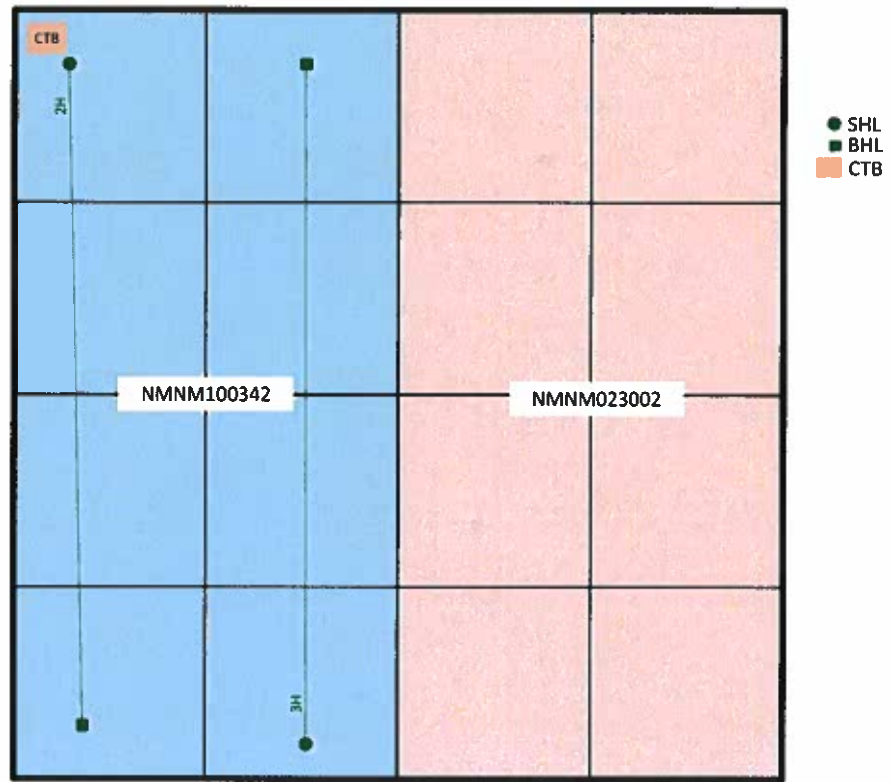


**Ledger for Site Diagram**

Type of Lease: Federal	Produced Fluid:
State Lease #: N/A	Produced Oil:
Federal Lease SHL #: NMNM100342	Produced Gas:
CA/Agreement #:	Flare/Vent:
Property Code: 38871	
OGRID #: 229137	

CONFIDENTIALITY NOTICE		THIS DRAWING IS PROPERTY OF CONCHO OIL & GAS, INC. AND IS NOT TO BE REPRODUCED OR TRANSMITTED IN ANY FORM OR BY ANY MEANS, ELECTRONIC OR MECHANICAL, INCLUDING PHOTOCOPYING, RECORDING, OR BY ANY INFORMATION STORAGE AND RETRIEVAL SYSTEM, WITHOUT THE WRITTEN PERMISSION OF CONCHO OIL & GAS, INC.	
REFERENCE DRAWINGS		ONE CONCHO CENTER 600 WEST LINDAS AVENUE MIDLAND, TEXAS 79701	
HCL		TITLE	
DATE		DATE	
BY		BY	
DESCRIPTION		DESCRIPTION	
DATE		DATE	
BY		BY	
DESCRIPTION		DESCRIPTION	
DATE		DATE	
BY		BY	
DESCRIPTION		DESCRIPTION	
DATE		DATE	
BY		BY	
DESCRIPTION		DESCRIPTION	
DATE		DATE	
BY		BY	
DESCRIPTION		DESCRIPTION	
DATE		DATE	
BY		BY	
DESCRIPTION		DESCRIPTION	
DATE		DATE	
BY		BY	
DESCRIPTION		DESCRIPTION	
DATE		DATE	
BY		BY	
DESCRIPTION		DESCRIPTION	
DATE		DATE	
BY		BY	
DESCRIPTION		DESCRIPTION	
DATE		DATE	
BY		BY	
DESCRIPTION		DESCRIPTION	
DATE		DATE	
BY		BY	
DESCRIPTION		DESCRIPTION	
DATE		DATE	
BY		BY	
DESCRIPTION		DESCRIPTION	
DATE		DATE	
BY		BY	
DESCRIPTION		DESCRIPTION	
DATE		DATE	
BY		BY	
DESCRIPTION		DESCRIPTION	
DATE		DATE	
BY		BY	
DESCRIPTION		DESCRIPTION	
DATE		DATE	
BY		BY	
DESCRIPTION		DESCRIPTION	
DATE		DATE	
BY		BY	
DESCRIPTION		DESCRIPTION	
DATE		DATE	
BY		BY	
DESCRIPTION		DESCRIPTION	
DATE		DATE	
BY		BY	
DESCRIPTION		DESCRIPTION	
DATE		DATE	
BY		BY	
DESCRIPTION		DESCRIPTION	
DATE		DATE	
BY		BY	
DESCRIPTION		DESCRIPTION	
DATE		DATE	
BY		BY	
DESCRIPTION		DESCRIPTION	
DATE		DATE	
BY		BY	
DESCRIPTION		DESCRIPTION	
DATE		DATE	
BY		BY	
DESCRIPTION		DESCRIPTION	
DATE		DATE	
BY		BY	
DESCRIPTION		DESCRIPTION	
DATE		DATE	
BY		BY	
DESCRIPTION		DESCRIPTION	
DATE		DATE	
BY		BY	
DESCRIPTION		DESCRIPTION	
DATE		DATE	
BY		BY	
DESCRIPTION		DESCRIPTION	
DATE		DATE	
BY		BY	
DESCRIPTION		DESCRIPTION	
DATE		DATE	
BY		BY	
DESCRIPTION		DESCRIPTION	
DATE		DATE	
BY		BY	
DESCRIPTION		DESCRIPTION	
DATE		DATE	
BY		BY	
DESCRIPTION		DESCRIPTION	
DATE		DATE	
BY		BY	
DESCRIPTION		DESCRIPTION	
DATE		DATE	
BY		BY	
DESCRIPTION		DESCRIPTION	
DATE		DATE	
BY		BY	
DESCRIPTION		DESCRIPTION	
DATE		DATE	
BY		BY	
DESCRIPTION		DESCRIPTION	
DATE		DATE	
BY		BY	
DESCRIPTION		DESCRIPTION	
DATE		DATE	
BY		BY	
DESCRIPTION		DESCRIPTION	
DATE		DATE	
BY		BY	
DESCRIPTION		DESCRIPTION	
DATE		DATE	
BY		BY	
DESCRIPTION		DESCRIPTION	
DATE		DATE	
BY		BY	
DESCRIPTION		DESCRIPTION	
DATE		DATE	
BY		BY	
DESCRIPTION		DESCRIPTION	
DATE		DATE	
BY		BY	
DESCRIPTION		DESCRIPTION	
DATE		DATE	
BY		BY	
DESCRIPTION		DESCRIPTION	
DATE		DATE	
BY		BY	
DESCRIPTION		DESCRIPTION	
DATE		DATE	
BY		BY	
DESCRIPTION		DESCRIPTION	
DATE		DATE	
BY		BY	
DESCRIPTION		DESCRIPTION	
DATE		DATE	
BY		BY	
DESCRIPTION		DESCRIPTION	
DATE		DATE	
BY		BY	
DESCRIPTION		DESCRIPTION	
DATE		DATE	
BY		BY	
DESCRIPTION		DESCRIPTION	
DATE		DATE	
BY		BY	
DESCRIPTION		DESCRIPTION	
DATE		DATE	
BY		BY	
DESCRIPTION		DESCRIPTION	
DATE		DATE	
BY		BY	
DESCRIPTION		DESCRIPTION	
DATE		DATE	
BY		BY	
DESCRIPTION		DESCRIPTION	
DATE		DATE	
BY		BY	
DESCRIPTION		DESCRIPTION	
DATE		DATE	
BY		BY	
DESCRIPTION		DESCRIPTION	
DATE		DATE	
BY		BY	
DESCRIPTION		DESCRIPTION	
DATE		DATE	
BY		BY	
DESCRIPTION		DESCRIPTION	
DATE		DATE	
BY		BY	
DESCRIPTION		DESCRIPTION	
DATE		DATE	
BY		BY	
DESCRIPTION		DESCRIPTION	
DATE		DATE	
BY		BY	
DESCRIPTION		DESCRIPTION	
DATE		DATE	
BY		BY	
DESCRIPTION		DESCRIPTION	
DATE		DATE	
BY		BY	
DESCRIPTION		DESCRIPTION	
DATE		DATE	
BY		BY	
DESCRIPTION		DESCRIPTION	
DATE		DATE	
BY		BY	
DESCRIPTION		DESCRIPTION	
DATE		DATE	
BY		BY	
DESCRIPTION		DESCRIPTION	
DATE		DATE	
BY		BY	
DESCRIPTION		DESCRIPTION	
DATE		DATE	
BY		BY	
DESCRIPTION		DESCRIPTION	
DATE		DATE	
BY		BY	
DESCRIPTION		DESCRIPTION	
DATE		DATE	
BY		BY	
DESCRIPTION		DESCRIPTION	
DATE		DATE	
BY		BY	
DESCRIPTION		DESCRIPTION	
DATE		DATE	
BY		BY	
DESCRIPTION		DESCRIPTION	
DATE		DATE	
BY		BY	
DESCRIPTION		DESCRIPTION	
DATE		DATE	
BY		BY	
DESCRIPTION		DESCRIPTION	
DATE		DATE	
BY		BY	
DESCRIPTION		DESCRIPTION	
DATE		DATE	
BY		BY	
DESCRIPTION		DESCRIPTION	
DATE		DATE	
BY		BY	
DESCRIPTION		DESCRIPTION	
DATE		DATE	
BY		BY	
DESCRIPTION		DESCRIPTION	
DATE		DATE	
BY		BY	
DESCRIPTION		DESCRIPTION	
DATE		DATE	
BY		BY	
DESCRIPTION		DESCRIPTION	
DATE		DATE	
BY		BY	
DESCRIPTION		DESCRIPTION	
DATE		DATE	
BY		BY	

Airbus 12 Federal 2H & 3H



Sec 12 T-19S-R31E  
Eddy County NM

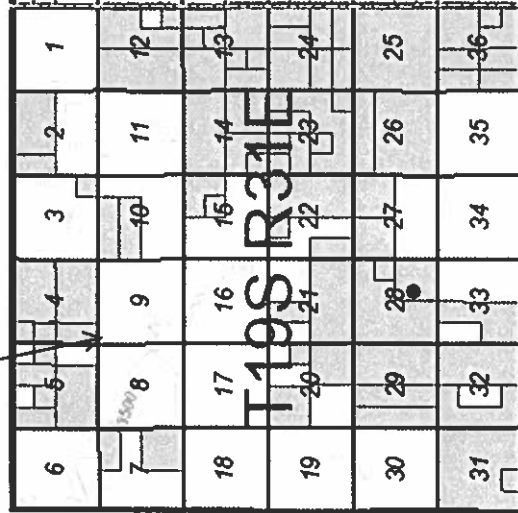
## AIRBUS 12 FEDERAL 2H 7 3H CTB



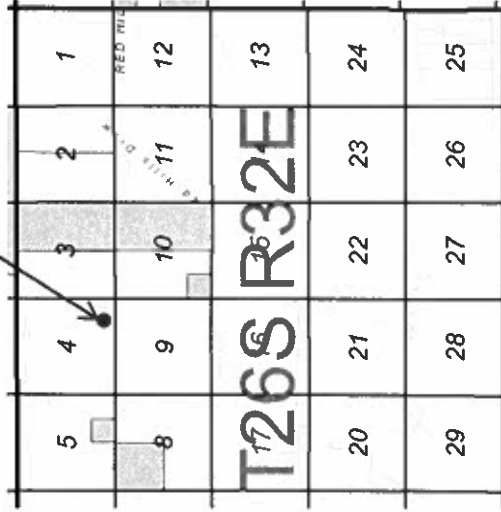


# Airbus 12 Federal 2H & 3H & Red Hills and Jal Offload Station Map

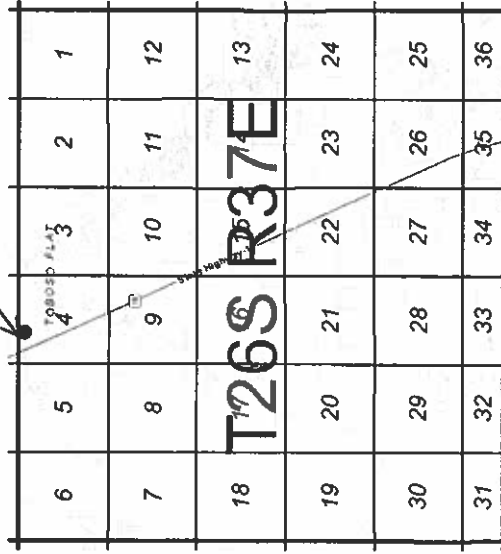
Airbus 12 Federal 2H & 3H  
Eddy County, NM



Red Hills Offload Station  
Lea County, NM



Jal Offload Station  
Lea County, NM



AIRBUS 12 FED 2H									
AIRBUS 12 FED 3H									
Date Sent	Initials	Name	Address	City	State	ZipCode	Certified Return Receipt No.	Delivered	
10.13.20	JB	Westall Oil & Gas Co, LLC	PO Box 4	Loco Hills	NM	88255	7017 3040 0000 1206 4210		
10.13.20	JB	Westall Family Oil	1208 Karabella Way	Roswell	NM	88201	7017 3040 0000 1206 4203		
10.13.20	JB	BLM	620 E. Green Street	Carlsbad	NM	88220	7017 3040 0000 1206 4197		