

District I
1625 N. French Dr., Hobbs, NM 88240
Phone: (575) 393-6161 Fax: (575) 393-0720
District II
811 S. First St., Artesia, NM 88210
Phone: (575) 748-1283 Fax: (575) 748-9720
District III
1000 Rio Brazos Road, Aztec, NM 87410
Phone: (505) 334-6178 Fax: (505) 334-6170
District IV
1220 S. St. Francis Dr., Santa Fe, NM 87505
Phone: (505) 476-3460 Fax: (505) 476-3462

State of New Mexico
Energy, Minerals & Natural Resources Department
OIL CONSERVATION DIVISION
1220 South St. Francis Dr.
Santa Fe, NM 87505

Form C-102
Revised August 1, 2011
Submit one copy to appropriate
District Office

☒ AMENDED REPORT

As-Drilled

WELL LOCATION AND ACREAGE DEDICATION PLAT

API Number 30-015-45251	Pool Code 98220/98236	Pool Name PURPLE SAGE WOLFCAMP/WC-015 G-08 S233135D; WOLFCAMP
Property Code 322245	Property Name PLATINUM MDP1 "34-3" FEDERAL COM	Well Number 175H
OGRID No. 14696	Operator Name OXY USA INC.	Elevation 3438.3'

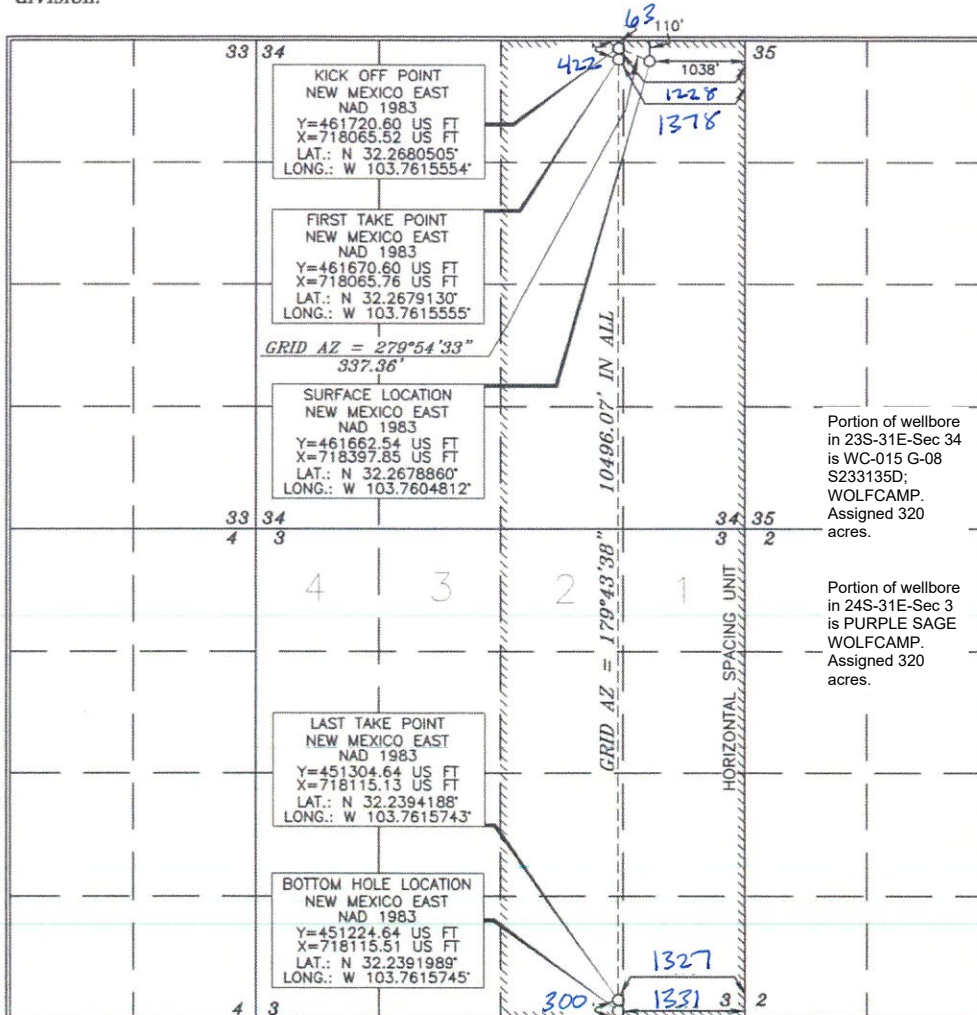
Surface Location

UL or lot no.	Section	Township	Range	Lot Idn	Feet from the	North/South line	Feet from the	East/West line	County
A	34	23 SOUTH	31 EAST, N.M.P.M.		110'	NORTH	1038'	EAST	EDDY

Bottom Hole Location If Different From Surface

UL or lot no.	Section	Township	Range	Lot Idn	Feet from the	North/South line	Feet from the	East/West line	County
0	3	24 SOUTH	31 EAST, N.M.P.M.		232	SOUTH	1331	EAST	EDDY
Dedicated Acres 640		Joint or Infill	Consolidation Code	Order No. NSL#7039					

No allowable will be assigned to this completion until all interests have been consolidated or a non-standard unit has been approved by the division.



OPERATOR CERTIFICATION

I hereby certify that the information contained herein is true and complete to the best of my knowledge and belief, and that this organization either owns a working interest or unleased mineral interest in the land including the proposed bottom hole location or has a right to drill this well at this location pursuant to a contract with an owner of such a mineral or working interest, or to a voluntary pooling agreement or a compulsory pooling order heretofore entered by the division.

Sarah Chapman 9/11/19
Signature Date

Sarah Chapman
Printed Name

sarah.chapman@oxy.com
E-mail Address

SURVEYOR CERTIFICATION

I hereby certify that the well location shown on this plat was plotted from field notes of actual surveys made by me or under my supervision, and that the same is true and correct to the best of my belief.

ERRY J. ASH
15079
JANUARY 29, 2019
Date of Survey

Terry Ash
Signature and Stamp
Professional Surveyor

Terry Ash 5/9/2019
Certificate Number

WO# 180129WL-c (Rev. A) (KA)