

NSL

Initial

Application

| | | | |
|---------------------------|----------------------|------------------|-------------------------------|
| RECEIVED: 03/12/21 | REVIEWER: LRL | TYPE: NSL | APP NO: pLEL2107432302 |
|---------------------------|----------------------|------------------|-------------------------------|

ABOVE THIS TABLE FOR OCD DIVISION USE ONLY

NEW MEXICO OIL CONSERVATION DIVISION
 - Geological & Engineering Bureau -
 1220 South St. Francis Drive, Santa Fe, NM 87505

**ADMINISTRATIVE APPLICATION CHECKLIST**

THIS CHECKLIST IS MANDATORY FOR ALL ADMINISTRATIVE APPLICATIONS FOR EXCEPTIONS TO DIVISION RULES AND
 REGULATIONS WHICH REQUIRE PROCESSING AT THE DIVISION LEVEL IN SANTA FE

Applicant: Longfellow Energy, L.P. **OGRID Number:** 372210
Well Name: Santana State Com 20CD 006H **API:** API# 30-015-PENDING
Pool: Artesia; Glorieta-Yeso **Pool Code:** 96830

**SUBMIT ACCURATE AND COMPLETE INFORMATION REQUIRED TO PROCESS THE TYPE OF APPLICATION
 INDICATED BELOW**

- 1) **TYPE OF APPLICATION:** Check those which apply for [A]
 A. Location – Spacing Unit – Simultaneous Dedication
☒ NSL ☐ NSP (PROJECT AREA) ☐ NSP (PRORATION UNIT) ☐ SD
- B. Check one only for [I] or [II]
 [I] Commingling – Storage – Measurement
☐ DHC ☐ CTB ☐ PLC ☐ PC ☐ OLS ☐ OLM
 [II] Injection – Disposal – Pressure Increase – Enhanced Oil Recovery
☐ WFX ☐ PMX ☐ SWD ☐ IPI ☐ EOR ☐ PPR
- 2) **NOTIFICATION REQUIRED TO:** Check those which apply.
 A. ☒ Offset operators or lease holders
 B. ☐ Royalty, overriding royalty owners, revenue owners
 C. ☐ Application requires published notice
 D. ☒ Notification and/or concurrent approval by SLO
 E. ☐ Notification and/or concurrent approval by BLM
 F. ☐ Surface owner
 G. ☒ For all of the above, proof of notification or publication is attached, and/or,
 H. ☐ No notice required

FOR OCD ONLY

- ☐ Notice Complete
☐ Application Content Complete

- 3) **CERTIFICATION:** I hereby certify that the information submitted with this application for administrative approval is **accurate** and **complete** to the best of my knowledge. I also understand that **no action** will be taken on this application until the required information and notifications are submitted to the Division.

Note: Statement must be completed by an individual with managerial and/or supervisory capacity.

Sharon T. Shaheen, Attorney, Montgomery & Andrews, P.A.

Print or Type Name

Sharon T Shaheen

Signature

March 12, 2021

Date

(505) 986-2678

Phone Number

sshhaheen@montand.com

e-mail Address



**MONTGOMERY
& ANDREWS**
LAW FIRM

SHARON T. SHAHEEN
Direct: (505) 986-2678
Email: sshaheen@montand.com
www.montand.com

March 12, 2021

Submitted via OCD's electronic filing system

Leonard Lowe
NM Oil Conservation Division
1220 S. St. Francis Drive
Santa Fe, NM 87505

**RE: Longfellow Energy, L.P.
Request for Administrative Approval of Non-Standard Location**

Santana State Com 20CD 006H
S/2 Section 20, T17S, R28E
Eddy County, New Mexico
Artesia; Glorieta-Yeso Pool (Pool Code 96830)
API# 30-015-PENDING

Dear Mr. Lowe,

Pursuant to Division Rules 19.15.16.15(C)(6) and 19.15.15.13(C)-(D) NMAC, Longfellow Energy, LP ("Longfellow") requests administrative approval of a non-standard location for the above-referenced oil well in a 320-acre spacing unit, as described more fully below.

The standard setback in the horizontal plane from any point in the completed interval to any outer boundary of the horizontal spacing unit is 330 feet for an oil well. 19.15.16.15(C)(1)(a) NMAC. The completed interval of the above-referenced well, however, will be 214 feet at its closest point from the southern boundary of the spacing unit. Longfellow is requesting approval to decrease the setback for the completed interval of the above-referenced well.

The proposed surface and bottom hole locations and first and last take points are as follows:

1. SHL: 1170' FSL and 200' FWL of Section 21-T17S-R28E
 2. FTP: 226' FSL and 100' FEL of Section 20-T17S-R28E
 3. LTP: 214' FSL and 100' FWL of Section 20-T17S-R28E
-

4. BHL: 214' FSL and 100' FWL of Section 20-T17S-R28E

It is Longfellow's responsibility as a prudent operator to maximize the recovery of oil and gas reserves left in the ground. Approval of the unorthodox completed interval will allow Longfellow to use its preferred well spacing plan for horizontal wells in this area and thereby maximize recovery and prevent waste.

Attached is the draft C-102 form and plat to assist the Division in its review of Longfellow's requests. Longfellow has sent notice to all affected persons on the enclosed spreadsheet by certified mail, return receipt requested, with a copy of this request, the plat, and the draft C-102. The notice also informs the affected persons that, if they object to the aforementioned requests, they must file the objection in writing with the Division within 20 days from the date the Division receives this administrative approval request. I attach a sample of the notice letter and a spreadsheet with the types of interests and names of the affected parties, the location of each parties' interest, the date the letter was sent, and the mail tracking number for the mailings that went out today.

Please let me know if you have any questions or concerns. Thank you for your assistance in this matter.

Very truly yours,

/s/Sharon T. Shaheen

Sharon T. Shaheen

STS/jfm

Enclosures

cc: Ryan Culpepper, *via email*
Longfellow Energy, LP

District I
1625 N. French Dr., Hobbs, NM 88240
Phone: (575) 393-6161 Fax: (575) 393-0720
District II
811 S. First St., Artesia, NM 88210
Phone: (575) 748-1283 Fax: (575) 748-9720
District III
1000 Rio Brazos Road, Aztec, NM 87410
Phone: (505) 334-6178 Fax: (505) 334-6170
District IV
1220 S. St. Francis Dr., Santa Fe, NM 87505
Phone: (505) 476-3460 Fax: (505) 476-3462

State of New Mexico
Energy, Minerals & Natural Resources Department
OIL CONSERVATION DIVISION
1220 South St. Francis Dr.
Santa Fe, NM 87505

Form C-102
Revised August 1, 2011
Submit one copy to appropriate
District Office

☐ AMENDED REPORT

WELL LOCATION AND ACREAGE DEDICATION PLAT

| | | |
|----------------------------------|--|----------------------------------|
| ¹ API Number | ² Pool Code | ³ Pool Name |
| ⁴ Property Code | ⁵ Property Name SANTANA STATE COM 20CD | ⁶ Well Number 006H |
| ⁷ OGRID No. 372210 | ⁸ Operator Name LONGFELLOW ENERGY, LP | ⁹ Elevation 3610.0 |

¹⁰ Surface Location


| | | | | | | | | | |
|--------------------|---------------|------------------|---------------|---------|-----------------------|---------------------------|----------------------|------------------------|----------------|
| UL or lot no. M | Section 21 | Township 17 S | Range 28 E | Lot Idn | Feet from the 1170 | North/South line SOUTH | Feet from the 200 | East/West line WEST | County EDDY |
|--------------------|---------------|------------------|---------------|---------|-----------------------|---------------------------|----------------------|------------------------|----------------|

¹¹ Bottom Hole Location If Different From Surface

| | | | | | | | | | |
|--------------------|---------------|------------------|---------------|---------|----------------------|---------------------------|----------------------|------------------------|----------------|
| UL or lot no. M | Section 20 | Township 17 S | Range 28 E | Lot Idn | Feet from the 214 | North/South line SOUTH | Feet from the 100 | East/West line WEST | County EDDY |
|--------------------|---------------|------------------|---------------|---------|----------------------|---------------------------|----------------------|------------------------|----------------|

| | | | |
|-------------------------------|-------------------------------|----------------------------------|-------------------------|
| ¹² Dedicated Acres | ¹³ Joint or Infill | ¹⁴ Consolidation Code | ¹⁵ Order No. |
|-------------------------------|-------------------------------|----------------------------------|-------------------------|

No allowable will be assigned to this completion until all interests have been consolidated or a non-standard unit has been approved by the division.

| | |
|--|--|
| <p>NW CORNER SEC. 20 LAT. = 32.8269449°N LONG. = 104.2063469°W NMSP EAST (FT) N = 664598.82 E = 580344.41</p> <p>N/4 CORNER SEC. 20 LAT. = 32.8269302°N LONG. = 104.1977818°W NMSP EAST (FT) N = 664596.76 E = 582975.37</p> <p>SECTION CORNER LAT. = 32.8269180°N LONG. = 104.1892195°W NMSP EAST (FT) N = 664595.79 E = 585605.52</p> <p>N/4 CORNER SEC. 21 LAT. = 32.8270231°N LONG. = 104.1806687°W NMSP EAST (FT) N = 664637.73 E = 588231.72</p> <p>NE CORNER SEC. 21 LAT. = 32.8271200°N LONG. = 104.1721225°W NMSP EAST (FT) N = 664676.86 E = 590857.15</p> <p>S89°57'18"E 2630.96 FT S89°58'44"E 2630.15 FT N89°05'06"E 2626.54 FT N89°08'46"E 2625.71 FT</p> <p>W/4 CORNER SEC. 20 LAT. = 32.8196730°N LONG. = 104.2063174°W NMSP EAST (FT) N = 661953.21 E = 580356.63</p> <p>QUARTER CORNER LAT. = 32.8196417°N LONG. = 104.1892316°W NMSP EAST (FT) N = 661948.54 E = 585605.39</p> <p>E/4 CORNER SEC. 21 LAT. = 32.8199456°N LONG. = 104.1722373°W NMSP EAST (FT) N = 662066.66 E = 590825.85</p> <p>SEC. 20 FIRST TAKE POINT 226' FSL, 100' FEL LAT. = 32.8129777°N LONG. = 104.1895762°W</p> <p>SEC. 21 SANTANA STATE COM 20CD 006H ELEV. = 3610.0' LAT. = 32.8155891°N (NAD83) LONG. = 104.1885923°W NMSP EAST (FT) N = 660474.42 E = 585803.82</p> <p>200' SURFACE LOCATION</p> <p>1170' FTP</p> <p>LTP & BOTTOM OF HOLE</p> <p>100'</p> <p>SW CORNER SEC. 20 LAT. = 32.8124076°N LONG. = 104.2062852°W NMSP EAST (FT) N = 659309.95 E = 580369.70</p> <p>S/4 CORNER SEC. 20 LAT. = 32.8123832°N LONG. = 104.1977681°W NMSP EAST (FT) N = 659304.34 E = 582986.39</p> <p>SECTION CORNER LAT. = 32.8123554°N LONG. = 104.1892526°W NMSP EAST (FT) N = 659297.68 E = 585602.54</p> <p>S/4 CORNER SEC. 21 LAT. = 32.8125646°N LONG. = 104.1808012°W NMSP EAST (FT) N = 659377.42 E = 588198.94</p> <p>SE CORNER SEC. 21 LAT. = 32.8127748°N LONG. = 104.1723506°W NMSP EAST (FT) N = 659457.75 E = 590795.03</p> <p>N89°52'38"W 2616.69 FT N89°51'16"W 2616.20 FT S88°14'28"W 2597.58 FT S88°13'39"W 2597.34 FT</p> <p>N00°15'52"W 2645.64 FT N00°15'52"W 2643.30 FT N00°17'01"W 2643.30 FT N00°17'01"W 2643.30 FT S00°00'10"W 2647.24 FT S00°00'10"W 2647.24 FT S00°03'39"W 2650.86 FT S00°03'39"W 2650.86 FT S00°41'13"W 2610.39 FT S00°41'13"W 2609.10 FT S00°40'37"W 2609.10 FT S00°40'37"W 2609.10 FT</p> | <p>¹⁷ OPERATOR CERTIFICATION</p> <p>I hereby certify that the information contained herein is true and complete to the best of my knowledge and belief, and that this organization either owns a working interest or unleased mineral interest in the land including the proposed bottom hole location or has a right to drill this well at this location pursuant to a contract with an owner of such a mineral or working interest, or to a voluntary pooling agreement or a compulsory pooling order heretofore entered by the division.</p> <p>Signature _____ Date _____</p> <p>Printed Name _____</p> <p>E-mail Address _____</p> <p>¹⁸ SURVEYOR CERTIFICATION</p> <p>I hereby certify that the well location shown on this plat was plotted from field notes of actual surveys made by me or under my supervision, and that the same is true and correct to the best of my belief.</p> <p>FEBRUARY 22, 2021</p> <p>Date of Survey _____</p> <p>Signature and Seal of Professional Surveyor: </p> <p>Certificate Number: 12797</p> <p>Surveyor No. 8619</p> |
|--|--|

Intent ☐ As Drilled ☐

| | | | | | | | | |
|---|--|--|--|--|--|---------------------|--|--|
| API # | | | | | | | | |
| Operator Name: LONGFELLOW ENERGY, LP | | | Property Name: SANTANA STATE COM 20CD | | | Well Number 006H | | |

Kick Off Point (KOP)

| | | | | | | | | | |
|----------|---------|----------|-------|-----|-----------|----------|------|----------|--------|
| UL | Section | Township | Range | Lot | Feet | From N/S | Feet | From E/W | County |
| Latitude | | | | | Longitude | | | | NAD |

First Take Point (FTP)

| | | | | | | | | | |
|------------------------|---------------|-----------------|--------------|-----|--------------------------|-------------------|-------------|------------------|----------------|
| UL P | Section 20 | Township 17S | Range 28E | Lot | Feet 226 | From N/S SOUTH | Feet 100 | From E/W EAST | County EDDY |
| Latitude 32.8129777 | | | | | Longitude 104.1895762 | | | | NAD 83 |

Last Take Point (LTP)

| | | | | | | | | | |
|------------------------|---------------|-----------------|--------------|-----|--------------------------|-------------------|-------------|------------------|----------------|
| UL M | Section 20 | Township 17S | Range 28E | Lot | Feet 214 | From N/S SOUTH | Feet 100 | From E/W WEST | County EDDY |
| Latitude 32.8129949 | | | | | Longitude 104.2059623 | | | | NAD 83 |

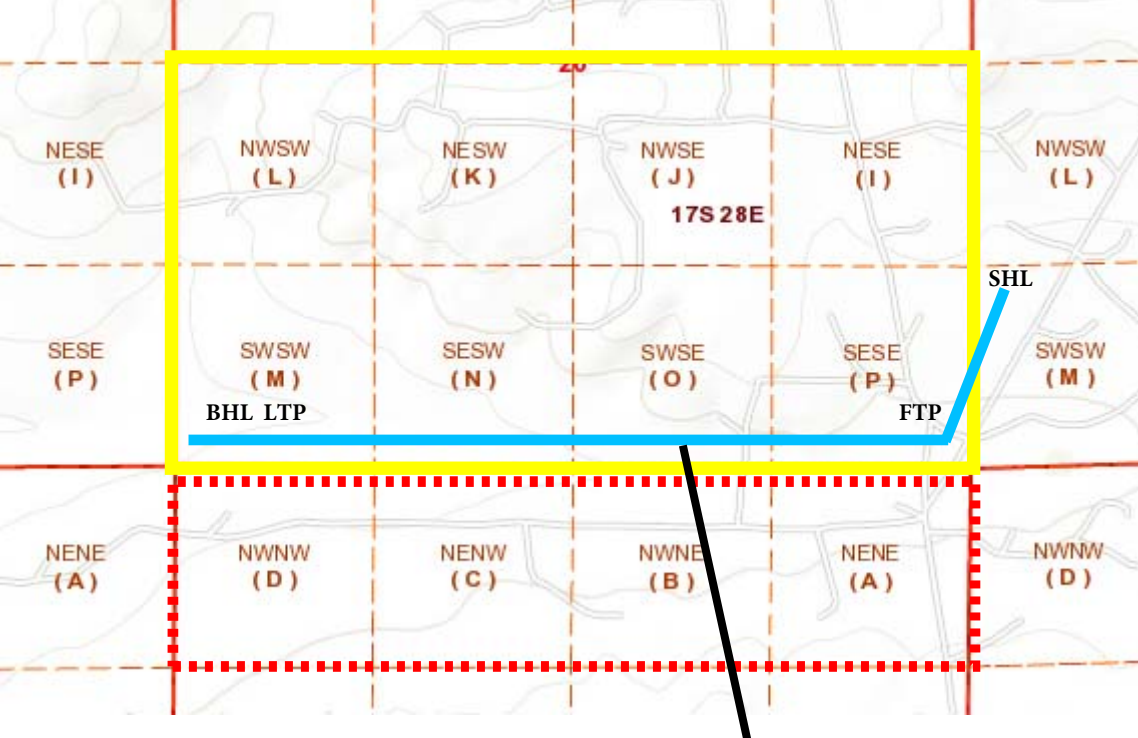
Is this well the defining well for the Horizontal Spacing Unit? ☐

Is this well an infill well? ☐

If infill is yes please provide API if available, Operator Name and well number for Defining well for Horizontal Spacing Unit.

| | | | | | | | | |
|----------------|--|--|----------------|--|--|-------------|--|--|
| API # | | | | | | | | |
| Operator Name: | | | Property Name: | | | Well Number | | |

KZ 06/29/2018



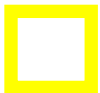
Santana State Com 20CD 006H

Longfellow Energy, LP

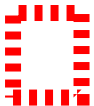
Santana State Com 20CD 006H

Section 20-17S-28E

Eddy County, NM

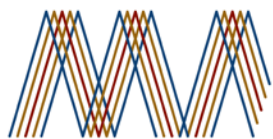


= Horizontal Spacing Unit



= Affected Tracts

| Type | Affected Party | Address | City, State Zip | Location | Date Letter Sent | Mail Tracking Number |
|------------------------|---|--------------------------------|--------------------|--------------------------------|------------------|--------------------------|
| Working Interest Owner | Marmon Holdings, Inc., c/o Cerro de Pasco Corp. | 181 W. Madison St., Suite 2600 | Chicago, IL 60602 | N/2 NE/4, NE/4 NW/4 29-17S-28E | March 12, 2021 | 7015 1730 0000 9774 2953 |
| Working Interest Owner | ConocoPhillips Company | 925 N. Eldridge Parkway | Houston, TX 77079 | NW/4 NW/4 29-17S-28E | March 12, 2021 | 7015 1730 0000 9774 2960 |
| Lessor | NM State Land Office | 310 Old Santa Fe Trail | Santa Fe, NM 87501 | N/2 N/2 29-17S-28E | March 12, 2021 | 7015 1730 0000 9774 2977 |



**MONTGOMERY
& ANDREWS**
LAW FIRM

SHARON T. SHAHEEN
Direct: (505) 986-2678
Email: sshaheen@montand.com
www.montand.com

March 12, 2021

CERTIFIED MAIL
RETURN RECEIPT REQUESTED

TO: ALL INTERESTED PARTIES ON THE ATTACHED LIST

Re: Administrative Application for Non-Standard Location

Longfellow Energy, L.P.

OGRID Number: 372210

Pool: Artesia; Glorieta-Yeso

Pool Code: 96830

Santana State Com 20CD 006H

S/2 Section 20, T17S, R28E

Eddy County, New Mexico

API# 30-015-PENDING

Pursuant to Division Rules 19.15.16.15(C)(6) and 19.15.15.13(C)-(D) NMAC, Longfellow Energy, L.P. has on this date made application to the New Mexico Oil Conservation Division ("NMOCD") for administrative approval of a non-standard location regarding the Santana State Com 20CD 006H (Pool Code 96830). A copy of the application is enclosed.

As the owner of an interest that may be affected, you have the right to object to the application. To do so, you must file a written protest with the NMOCD within twenty days. Failure to do so will prevent you from challenging the matter at a later time. A letter of protest may be sent to the NMOCD at 1220 South St. Francis Drive, Santa Fe, New Mexico 87505, directed to the attention of Leonard Lowe.

Should you consent to the application and the proposed Santana State Com 20CD 006H well location, you are requested to indicate your waiver of objection by

Interested Parties

March 12, 2021

Page | 2

signing where indicated below and then returning a copy of this letter with the executed signature page to me at your earliest convenience.

Very truly yours,

/s/Sharon T. Shaheen

Sharon T. Shaheen

Enclosure

CONSENT:

By: _____ for _____
Signature Name of Interested Party

Printed Name, Authorized Representative