

Submit 1 Copy To Appropriate District Office
District I – (575) 393-6161
1625 N. French Dr., Hobbs, NM 88240
District II – (575) 748-1283
811 S. First St., Artesia, NM 88210
District III – (505) 334-6178
1000 Rio Brazos Rd., Aztec, NM 87410
District IV – (505) 476-3460
1220 S. St. Francis Dr., Santa Fe, NM 87505

State of New Mexico
Energy, Minerals and Natural Resources

Form C-103
Revised July 18, 2013

OIL CONSERVATION DIVISION
1220 South St. Francis Dr.
Santa Fe, NM 87505

WELL API NO. 30-015-45523
5. Indicate Type of Lease STATE <input type="checkbox"/> FEE <input type="checkbox"/>
6. State Oil & Gas Lease No.
7. Lease Name or Unit Agreement Name CAL MON 35 FEDERAL
8. Well Number #174H
9. OGRID Number 16696
10. Pool name or Wildcat WC-015 G-08 S233135D; WOLFCAMP & COTTON DRAW; BONE SPRING

4. Well Location Unit Letter <u>B</u> : <u>310</u> feet from the <u>N</u> line and <u>2458</u> feet from the <u>E</u> line Section <u>35</u> Township <u>23S</u> Range <u>31E</u> NMPM County <u>EDDY</u>
11. Elevation (Show whether DR, RKB, RT, GR, etc.)

12. Check Appropriate Box to Indicate Nature of Notice, Report or Other Data

NOTICE OF INTENTION TO:

PERFORM REMEDIAL WORK ☐ PLUG AND ABANDON ☐
TEMPORARILY ABANDON ☐ CHANGE PLANS ☐
PULL OR ALTER CASING ☐ MULTIPLE COMPL ☐
DOWNHOLE COMMINGLE ☐
CLOSED-LOOP SYSTEM ☐
OTHER: SURFACE COMMINGLE – PLC 749A ☒

SUBSEQUENT REPORT OF:

REMEDIAL WORK ☐ ALTERING CASING ☐
COMMENCE DRILLING OPNS. ☐ P AND A ☐
CASING/CEMENT JOB ☐
OTHER: ☐

13. Describe proposed or completed operations. (Clearly state all pertinent details, and give pertinent dates, including estimated date of starting any proposed work). SEE RULE 19.15.7.14 NMAC. For Multiple Completions: Attach wellbore diagram of proposed completion or recompletion.

OXY USA INC requests approval to add CAL MON 35 FEDERAL #174H (30-015-45523) to PLC-749A. This well is being recompleted to an additional currently approved pool (Cotton Draw; Bone Spring) and currently approved lease (NMNM 019199). The C-102 is attached.

The facilities described in PLC-749A are unchanged – each facility has a sales-quality orifice meter (BLM gas FMP or equivalent meter) that continuously measures gas volume before it leaves the facility. Any commingling of wells upstream of these meters has been approved according to the Commingle Orders for each individual facility.

This request is for gas production only. Oil production will be handled through an amendment to PLC-805 for Cal Mon 35 Fed CTB #2 (M-26-23S-31E).

Spud Date: Rig Release Date:

I hereby certify that the information above is true and complete to the best of my knowledge and belief.

SIGNATURE Beth Schenkel TITLE REGULATORY ENGINEER DATE 05/25/2022

Type or print name BETH SCHENKEL E-mail address: BETH_SCHENKEL@OXY.COM PHONE: 713-497-2055

For State Use Only

APPROVED BY: Dean R. McIlwaine TITLE Petroleum Engineer DATE 05/26/2022

Conditions of Approval (if any):

District I
1625 N. French Dr., Hobbs, NM 88240
Phone: (575) 393-6161 Fax: (575) 393-0720
District II
811 S. First St., Artesia, NM 88210
Phone: (575) 748-1283 Fax: (575) 748-9720
District III
1000 Rio Brazos Road, Aztec, NM 87410
Phone: (505) 334-6178 Fax: (505) 334-6170
District IV
1220 S. St. Francis Dr., Santa Fe, NM 87505
Phone: (505) 476-3460 Fax: (505) 476-3462

State of New Mexico
Energy, Minerals & Natural Resources Department
OIL CONSERVATION DIVISION
1220 South St. Francis Dr.
Santa Fe, NM 87505

Form C-102
Revised August 1, 2011
Submit one copy to appropriate
District Office

☒ AMENDED REPORT

WELL LOCATION AND ACREAGE DEDICATION PLAT

API Number	Pool Code	Pool Name
30-015-45523	13367	COTTON DRAW; BONE SPRING
Property Code	Property Name	Well Number
314855	CAL-MON "35" FEDERAL	174H
OGRID No.	Operator Name	Elevation
16696	OXY USA INC.	3463.8'

Surface Location

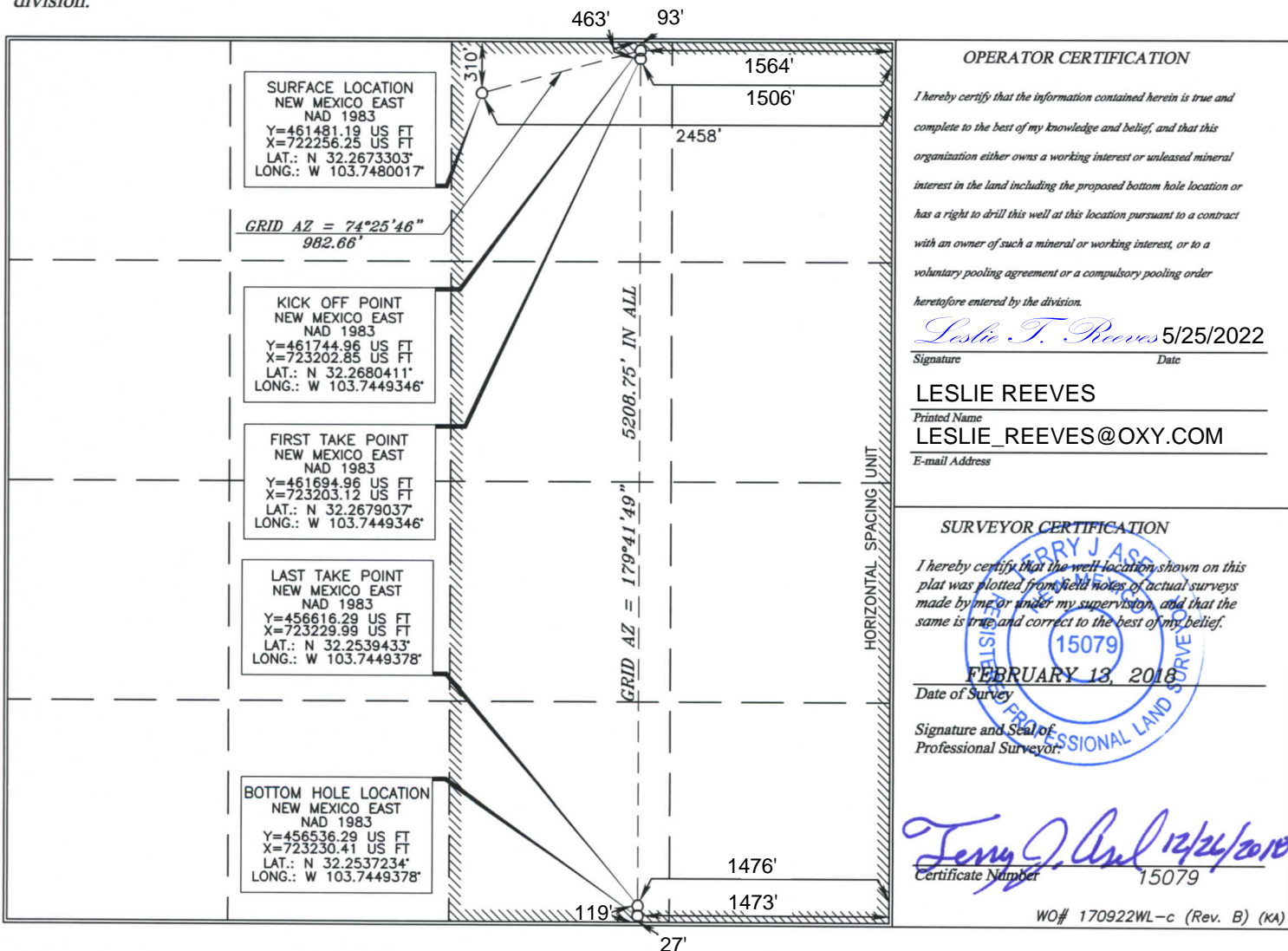
UL or lot no.	Section	Township	Range	Lot Idn	Feet from the	North/South line	Feet from the	East/West line	County
B	35	23 SOUTH	31 EAST, N.M.P.M.		310'	NORTH	2458'	EAST	EDDY

Bottom Hole Location If Different From Surface

UL or lot no.	Section	Township	Range	Lot Idn	Feet from the	North/South line	Feet from the	East/West line	County
O	35	23 SOUTH	31 EAST, N.M.P.M.		27'	SOUTH	1473'	EAST	EDDY

Dedicated Acres	Joint or Infill	Consolidation Code	Order No.
320			

No allowable will be assigned to this completion until all interests have been consolidated or a non-standard unit has been approved by the division.



WO# 170922WL-c (Rev. B) (KA)