

DATE IN 9.8.11	SUSPENSE	ENGINEER DKB	LOGGED 9.8.11	TYPE 1125147025
----------------	----------	--------------	---------------	-----------------

Carracas 30 B # 13R

NEW MEXICO OIL CONSERVATION DIVISION  
- Engineering Bureau -

Enogen  
Carracas 30 B # 13  
Carracas 30 B # 13R

ADMINISTRATIVE APPLICATION COVERSHEET

THIS COVERSHEET IS MANDATORY FOR ALL ADMINISTRATIVE APPLICATIONS FOR EXCEPTIONS TO DIVISION RULES AND REGULATIONS

201128

Application Acronyms:

- [NSP-Non-Standard Proration Unit] [NSL-Non-Standard Location]  
[DD-Directional Drilling] [SD-Simultaneous Dedication]  
[DHC-Downhole Commingling] [CTB-Lease Commingling] [PLC-Pool/Lease Commingling]  
[PC-Pool Commingling] [OLS - Off-Lease Storage] [OLM-Off-Lease Measurement]  
[WFX-Waterflood Expansion] [PMX-Pressure Maintenance Expansion]  
[SWD-Salt Water Disposal] [IPI-Injection Pressure Increase]  
[EOR-Qualified Enhanced Oil Recovery Certification] [PPR-Positive Production Response]

[1] TYPE OF APPLICATION - Check Those Which Apply for [A]

- [A] Location - Spacing Unit - Directional Drilling  
[ ] NSL [ ] NSP [ ] DD [X] SD

Check One Only for [B] and [C]

- [B] Commingling - Storage - Measurement  
[ ] DHC [ ] CTB [ ] PLC [ ] PC [ ] OLS [ ] OLM

- [C] Injection - Disposal - Pressure Increase - Enhanced Oil Recovery  
[ ] WFX [ ] PMX [ ] SWD [ ] IPI [ ] EOR [ ] PPR

[2] NOTIFICATION REQUIRED TO: - Check Those Which Apply, or ☐ Does Not Apply

- [A] [X] Working, Royalty or Overriding Royalty Interest Owners  
[B] [X] Offset Operators, Leaseholders or Surface Owner  
[C] [ ] Application is One Which Requires Published Legal Notice  
[D] [ ] Notification and/or Concurrent Approval by BLM or SLO  
U.S. Bureau of Land Management - Commissioner of Public Lands, State Land Office  
[E] [ ] For all of the above, Proof of Notification or Publication is Attached, and/or,  
[F] [ ] Waivers are Attached

[3] INFORMATION / DATA SUBMITTED IS COMPLETE - Statement of Understanding

I hereby certify that I, or personnel under my supervision, have read and complied with all applicable Rules and Regulations of the Oil Conservation Division. Further, I assert that the attached application for administrative approval is accurate and complete to the best of my knowledge and where applicable, verify that all interest (WI, RI, ORRI) is common. I understand that any omission of data, information or notification is cause to have the application package returned with no action taken.

Note: Statement must be completed by an individual with supervisory capacity.

David M. Poage  
Print or Type Name

David M. Poage  
Signature

District Landman  
Title

9/02/11  
Date

September 2, 2011

Ms Jami Bailey  
Division Director  
Oil Conservation Division  
New Mexico Department of Energy,  
Minerals and Natural Resources  
1220 South Saint Francis Drive  
Santa Fe, NM 87505

RE: Application of Energen Resources Corporation for Administrative Approval of the Simultaneous Dedication of the South-Half of Section 30, Township 32 North, Range 4 West, N.M.P. M., Rio Arriba County, New Mexico to its existing Carracas 30 B #13 Well and the Carracas 30 B # 13R Well.

Dear Ms. Bailey:

Energen Resources Corporation is the operator of a 310.55 acre spacing unit in the Basin Fruitland Coal Pool (**Pool Code 71629**) comprised of the south-half of Section 30, Township 32 North, Range 4 West, N.M.P.M., Rio Arriba County, New Mexico. This spacing unit is dedicated to Energen's Carracas 30 B # 13 which was drilled and is capable of production from the Fruitland Coal formation.

Energen seeks administrative approval of the simultaneous dedication of this 310.55 acre spacing unit to the following two gas wells:

A. the Carracas 30 B # 13 well (**API No. 30-039-27872**) vertically drilled from a surface location 800' FSL and 70' FWL of Section 30, sidetracked to a bottom hole location of 1192' FSL and 1083' FWL of Section 30. The entry point was at 1056' FSL and 701' FWL. This well was temporarily abandoned while drilling the Carracas B # 13R and

B. the horizontally drilled Carracas 30 B # 13R well (**API No. 30-039-30602**) which was horizontally drilled from a surface location 990' FSL and 915' FEL of Section 30 to a bottom hole location 1880' FSL and 760' FWL of Section 30. The entry point was at 1880' FSL and 1540' FEL of Section 30.

Neither well violates the existing set back requirements for these wells. This area has a 10' setback pursuant to R-13199.

Attached hereto for each well is a copy of Division Form C-102 for these wells that show the surface and bottom hole locations of each well. In addition also enclosed is a map of the offset operators of all offsetting spacing units. Energen Resources is the operator of all offsetting spacing units and owns 100% of the working interest in all offsetting spacing units.

Since Energen is the only party required to be furnished a Notice to offset operators none is being attached to this application.

The simultaneous dedication of the Southt-Half of said Section 30 to the Carracas 30 B # 13 and the Carracas 30 B # 13R wells will afford Energen the opportunity to efficiently produce the Fruitland Coal formation under this spacing unit. Energen's proposed simultaneous dedication of these wells does not exceed the number of wells allowed by division Rule for this spacing unit.

Your attention to this application is appreciated.

Sincerely,

A handwritten signature in black ink, appearing to read "David M. Poage", with a stylized, flowing script.

David M. Poage

District Landman

Energen Resources Corporation

Enclosures

DISTRICT I  
1825 N. French Dr., Hobbs, N.M. 88240

DISTRICT II  
1301 W. Grand Avenue, Artesia, N.M. 88210

DISTRICT III  
1000 Rio Brazos Rd., Aztec, N.M. 87410

DISTRICT IV  
1220 S. St. Francis Dr., Santa Fe, NM 87505

State of New Mexico  
Energy, Minerals & Natural Resources Department

OIL CONSERVATION DIVISION  
Bureau of Land Management  
1220 South St. Francis Dr.  
Santa Fe, NM 87505

RECEIVED

DEC 01 2008

Submit to Appropriate District Office  
State Lease - 4 Copies  
Fee Lease - 3 Copies  
Farmington Field Office

☐ AMENDED REPORT

### WELL LOCATION AND ACREAGE DEDICATION PLAT

*API Number 30039-30002		*Pool Code 71629	*Pool Name BASIN FRUITLAND COAL
*Property Code 35597	*Property Name CARRACAS 30B		*Well Number 13 R
*GRID No. 162928	*Operator Name ENERGEN RESOURCES CORPORATION		*Elevation 7248'

### <sup>10</sup> Surface Location

UL or lot no.	Section	Township	Range	Lot Idn	Feet from the	North/South line	Feet from the	East/West line	County
P	30	32N	4W		990'	SOUTH	915'	EAST	RIO ARRIBA

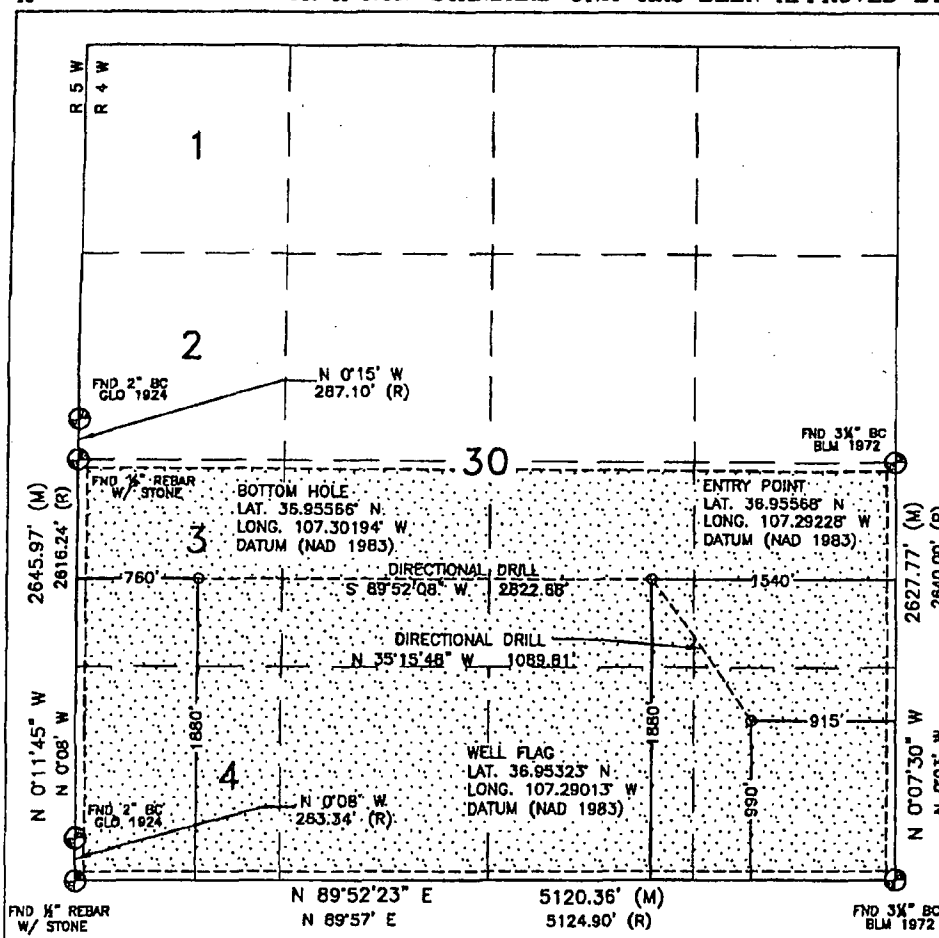
### <sup>11</sup> Bottom Hole Location If Different From Surface

UL or lot no.	Section	Township	Range	Lot Idn	Feet from the	North/South line	Feet from the	East/West line	County
L	30	32N	4W	3	1880'	SOUTH	760'	WEST	RIO ARRIBA

<sup>12</sup> Dedicated Acres 310.55 309.14 Acres - 5/2	<sup>13</sup> Joint or Infill	<sup>14</sup> Consolidation Code	<sup>15</sup> Order No.
---	-------------------------------	----------------------------------	-------------------------

NO ALLOWABLE WILL BE ASSIGNED TO THIS COMPLETION UNTIL ALL INTERESTS HAVE BEEN CONSOLIDATED  
OR A NON-STANDARD UNIT HAS BEEN APPROVED BY THE DIVISION

16



### 17 OPERATOR CERTIFICATION

I hereby certify that the information contained herein is true and complete to the best of my knowledge and belief, and that this organization either owns a working interest or unleased mineral interest in the land including the proposed bottom hole location or has a right to drill this well at this location pursuant to a contract with an owner or a compulsory pooling order heretofore entered by the division.

*Nathan Smith* 11/24/08  
Signature Date

Nathan Smith  
Printed Name

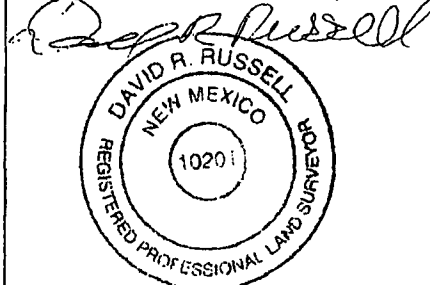
### 18 SURVEYOR CERTIFICATION

I hereby certify that the well location shown on this plat was plotted from field notes of actual surveys made by me or under my supervision, and that the same is true and correct to the best of my belief.

JUNE 26, 2008

Date of Survey

Signature and Seal of Professional Surveyor:



DAVID RUSSELL

Certificate Number

10201

**District I**  
1625 N. French Dr., Hobbs, NM 88240  
**District II**  
1301 W. Grand Avenue, Artesia, NM 88210  
**District III**  
1000 Rio Brazos Rd., Aztec, NM 87410  
**District IV**  
1220 S. St. Francis Dr., Santa Fe, NM 87505

State of New Mexico  
Energy, Minerals & Natural Resources Department  
**OIL CONSERVATION DIVISION**  
1220 South St. Francis Dr.  
Santa Fe, NM 87505  
**As Drilled**

Form C-102  
Revised October 12, 2005  
Submit to Appropriate District Office  
State Lease - 4 Copies  
Fee Lease - 3 Copies  
☒ AMENDED REPORT

**WELL LOCATION AND ACREAGE DEDICATION PLAT**

<sup>1</sup> API Number 30-039-27872	<sup>2</sup> Pool Code	<sup>3</sup> Pool Name Basin Fruitland Coal
<sup>4</sup> Property Code 35597	<sup>5</sup> Property Name Carracas 30 B	<sup>6</sup> Well Number 13
<sup>7</sup> OGRID No. 162928	<sup>8</sup> Operator Name Energen Resources Corporation	<sup>9</sup> Elevation 7189'

<sup>10</sup> Surface Location

UL or lot no.	Section	Township	Range	Lot Idn	Feet from the	North/South line	Feet from the	East/West line	County
M	30	32N	13W		800	South	70	West	Rio Arriba

<sup>11</sup> Bottom Hole Location If Different From Surface

UL or lot no.	Section	Township	Range	Lot Idn	Feet from the	North/South line	Feet from the	East/West line	County
M	30	32N	13W		1083	South	1192	West	Rio Arriba
<sup>12</sup> Dedicated Acres 309.14 - S/2	<sup>13</sup> Joint or Infill	<sup>14</sup> Consolidation Code	<sup>15</sup> Order No.						

No allowable will be assigned to this completion until all interests have been consolidated or a non-standard unit has been approved by the division.

<p>16</p>	<p><sup>17</sup> <b>OPERATOR CERTIFICATION</b> I hereby certify that the information contained herein is true and complete to the best of my knowledge and belief, and that this organization either owns a working interest or unleased mineral interest in the land including the proposed bottom hole location or has a right to drill this well at this location pursuant to a contract with an owner of such a mineral or working interest, or to a voluntary pooling agreement or a compulsory pooling order heretofore entered by the division.</p> <p style="text-align: right;">8/26/2011</p> <p>Signature _____ Date _____</p> <p>Nathan Smith Printed Name</p>			
	<p><sup>18</sup> <b>SURVEYOR CERTIFICATION</b> I hereby certify that the well location shown on this plat was plotted from field notes of actual surveys made by me or under my supervision, and that the same is true and correct to the best of my belief.</p> <p>January 23, 2006 Date of Survey</p> <p>Signature and Seal of Professional Surveyor: Original survey recorded and conducted by David R. Russell</p> <p>10201 Certificate Number</p>			



