



# PHILLIPS PETROLEUM COMPANY

ODESSA, TEXAS 79762  
4001 PENBROOK

EXPLORATION AND PRODUCTION GROUP  
Permian Basin Region

January 9, 1991

## Application for Exception to Statewide Rule No. 303-C to Downhole Commingle Production

State of New Mexico  
Energy and Minerals Department  
Oil Conservation Division  
P. O. Box 2088  
Santa Fe, NM 87504-2088

Attn: William J. LeMay  
Director

Gentlemen:

Phillips Petroleum Company respectfully requests administrative approval to downhole commingle gas production in our Sims Well No. 3 as provided for in Statewide Rule 303-C. Pertinent well information and data are included herein:

(a) Name and address of operator:  
Phillips Petroleum Company  
4001 Penbrook Street  
Odessa, TX 79762

(b) Sims Well No. 3  
1980' FNL and 1980' FWL, Section 24, T-22-S, R-37-E  
Lea County, New Mexico

Pools to be comingled:  
Blinbry Oil and Gas  
South Brunson Drinkard Abo  
Tubb Oil and Gas

(c) A plat is attached showing acreage dedicated to the well and the ownership of all offsetting leases.

(d) Current productivity tests on each zone:  
The Drinkard zone currently is producing 1.0 BOPD and 9 MCFPD.  
The Tubb zone is producing 100 MCFPD.

(e) Allocation of comingled production based on present production:  
Production decline curves for both the Tubb and the Drinkard zones are attached. Allocated gas production will be based on the current gas production from both the Tubb and the Drinkard. The gas condensate allocation will be based on the current gas condensate from the Drinkard zone. No condensate will be allocated to the Tubb zone.

(e) Continued

Well completion history (wellbore sketch attached):

The well was drilled and originally completed in April, 1948, in the Drinkard formation from 6370' - 6390'. It had an initial flowing potential of 63 BOPD. This interval was acidized several times with 15% HCl.

In September, 1952, the Drinkard formation was temporarily abandoned and the well was recompleted in the Tubb from 6020' - 6150'. The well was fracture treated and tested. It had an initial flowing potential of 1200 MCF/D.

In March, 1976, the well was deepened to 6995' and reperforated selectively in the Tubb from 5873' - 5961' and in the Drinkard from 6444' - 6894'. The well was acidized and dual completed.

Prediction of future reserves:

The proposed commingling completion will allow the gas from the Tubb and Drinkard zones to be produced such that maximum production will result.

Initial gas production from the Blinebry is estimated at 128 MCFPD.

(f) Bottom hole pressures for each zone:

The bottom hole pressure from the Drinkard zone was measured at 420 psi on 03/09/90. The bottom hole pressure from the Blinebry was measured at 230 psi on 03/11/90.

(g) Fluid characteristics:

Only the Drinkard zone currently produces condensate. No fluid incompatibilities will exist in the wellbore.

(h) Computation of value of commingled production vs. individual production streams:

Individual streams:

Tubb Oil and Gas

$$\begin{aligned} & (0 \text{ BOPD}) \times (\$20.00/\text{BBL}) = \$ \text{ 0/day} \\ + & (100 \text{ MCFPD}) \times (\$ 1.00/\text{MCF}) = \$ 100/\text{day} \\ & \text{TOTAL TUBB} = \$ 100/\text{day} \end{aligned}$$

Blinebry Oil and Gas

$$\begin{aligned} & (0 \text{ BOPD}) \times (\$20.00/\text{BBL}) = \$ \text{ 0/day} \\ + & (0 \text{ MCFPD}) \times (\$ 1.00/\text{MCF}) = \$ \text{ 0/day} \\ & \text{TOTAL BLINEBRY} = \$ \text{ 0/day} \end{aligned}$$

South Brunson Drinkard Abo

$$\begin{aligned} & (1 \text{ BOPD}) \times (\$20.00/\text{BBL}) = \$ \text{ 20/day} \\ + & (9 \text{ MCFPD}) \times (\$ 1.00/\text{MCF}) = \$ \text{ 9/day} \\ & \text{TOTAL DRINKARD} = \$ \text{ 29/day} \end{aligned}$$

$$\text{TOTAL INDIVIDUAL STREAMS} = \$ 129/\text{day}$$

(h). Continued

Commingled Streams:

$$\begin{aligned} & (1 \text{ BOPD}) \times (\$20.00/\text{BBL}) = \$ 20/\text{day} \\ + & (237 \text{ MCFPD}) \times (\$ 1.00/\text{MCF}) = \$ 237/\text{day} \\ \text{TOTAL COMMINGLED STREAMS} & = \$ 257/\text{day} \end{aligned}$$

(i) Formula for allocation of production:

Drinkard: 100% condensate and gas will be based on stabilized test percentage prior to commingling of the total gas stream.

$$\text{Monthly Oil (Drinkard)} = (\text{Total BOPM}) \times (\text{Drinkard test}) / (\text{Commingled test})$$

$$\text{Monthly Gas (Drinkard)} = (\text{Total MCFPM}) \times (\text{Drinkard test}) / (\text{Commingled test})$$

Blinebry: 100% condensate and gas production will be based on stabilized test percentage prior to commingling of the total gas stream.

$$\text{Monthly Oil (Blinebry)} = (\text{Total BOPM}) - (\text{Monthly Drinkard})$$

$$\text{Monthly Gas (Blinebry)} = (\text{Total MCFPM}) \times (\text{Blinebry test}) / (\text{Commingled test})$$

Tubb: 100% condensate and gas production will be based on stabilized test percentage prior to commingling of the total gas stream.

$$\text{Monthly Oil (Tubb)} = (\text{Total BOPM}) \times 0$$

$$\text{Monthly Gas (Tubb)} = (\text{Total MCFPM}) \times (\text{Tubb test}) / (\text{Commingled test})$$

Where Total BOPM and Total MCFPM in the above formulas refer to the total monthly commingled well production of oil and gas.

The parties of interest indicated on the attached list were notified by copy of this application sent February 1, 1991.

The Drinkard produces gas and condensate, and the Tubb produces gas. These two zones are currently uneconomical to operate. Commingling all three zones will permit the Drinkard and the Tubb to be produced economically. The well will be produced such that bottom hole flowing pressure in the wellbore will be at a minimum; therefore, there will be no opportunity for crossflow between commingled zones. The bottom hole pressure of the Blinebry is 230 psi, which is greater than 50% if the bottom hole pressure of the Drinkard zone when adjusted to the common data of the Drinkard.

The ownership (including working interest, royalty, and overriding royalty) of the Drinkard and the Blinbry is common to all zones.

Your consideration and approval will be appreciated. Direct any questions to the attention of Viveca Skinnider, telephone (915) 368-1489, or to me.

Thank you,

*Larry M. Sanders / by Jhm*

Larry M. Sanders, Supervisor  
Regulation and Proration

Attachments

cc: NMOCD, Hobbs Office  
Offset Operators

**WELL SERVICE APPROVAL - NON AFE  
PHILLIPS PETROLEUM COMPANY--PERMIAN BASIN REGION**

RKB @ 3334.5  
CHF @ (11.8)  
GL @ 3322.7

No Category Well

Date January 30, 1991

Area North Subarea Shafterlake

Lease & Well No. Sims #3

Legal Description 1980' FNL & 1980' FWL, Sec 24, T-22-S, R-37-E

Lea County

State: New Mexico

Field Drinkard, Tubb

Status: Pumping .1 BOPD 0 BWPD 12 MCFD (Drinkard)10/01/90

Flowing 0.0 BOPD 0 BWPD 121 MCFD (Tubb)

Tbg. 2-3/8" @6900' SN @ 7515'

Other Baker Lockset pkr @ 6265' Baker "L" sliding sleeve @ 6262' (closed)

Hole/Casing Condition

Last Stimulation: perfs: 5873'-6895' w/16000 gals 28% acid in 02/27/76

Workover Proposal:

Wellhead Description:

Well spudded 02/22/48

17-1/4" Hole-

13 3/8" @ 334.85' TOC @ Surf.

27# Armco spirial welded  
w/285 sx cement

< TOC outside 5 1/2" @ 2550'

12-1/4" Hole

8 5/8" @ 2996.92' TOC @ Surf.

24# to 32# J-55 GR. 8rd 2500 sx cmt.

Tubb Perfs:

5873' - 5961' -520 holes

6020' - 6150' - 20 holes

Baker Lockset pkr @ 6265'

Drinkard Perfs:

6365'- 6370' - 30 holes

6370'- 6390' -120 holes

6390'- 6420' -120 holes

6444'- 6894' - 33 holes

5 1/2" set @ 6898.5' TOC @ 2550'

14# - 17# J-55- H-40

7 7/8" hole

open hole 6898.5'-6995'

T.O. @ 6995 ' 7-7/8" hole

File name G:\wellfile\shaftlak\sims\#3.s01

Prepared by: D.G. Unger

Checked by:

Reser. Engr. V. L. Skinnider

Prod. Engr. S. E. Gutberlet

Approved

PROJECT ECONOMICS @ \$

Copies:

BOPD MCFD

AARR %

PAYOUT YRS.

NTER TIMES

NPV @ 13%

NPVR @ 13%

ECONOMIC LIFE YRS.

EST. COMPL. DATE

PPCO: W.I. 100.0000 %

R.I. %

CHARGE TO

GROSS COST

NET COST

EXPENSE WO 60-3502

INVESTMENT WO 90-3502

TOTAL

\$

\$

\$

\$

\$

\$

NEW MEXICO OIL CONSERVATION COMMISSION  
WELL LOCATION AND ACREAGE DEDICATION PLAT

Form C-102  
Supersedes C-128  
Effective 1-1-65

\*AMENDED

All distances must be from the outer boundaries of the Section.

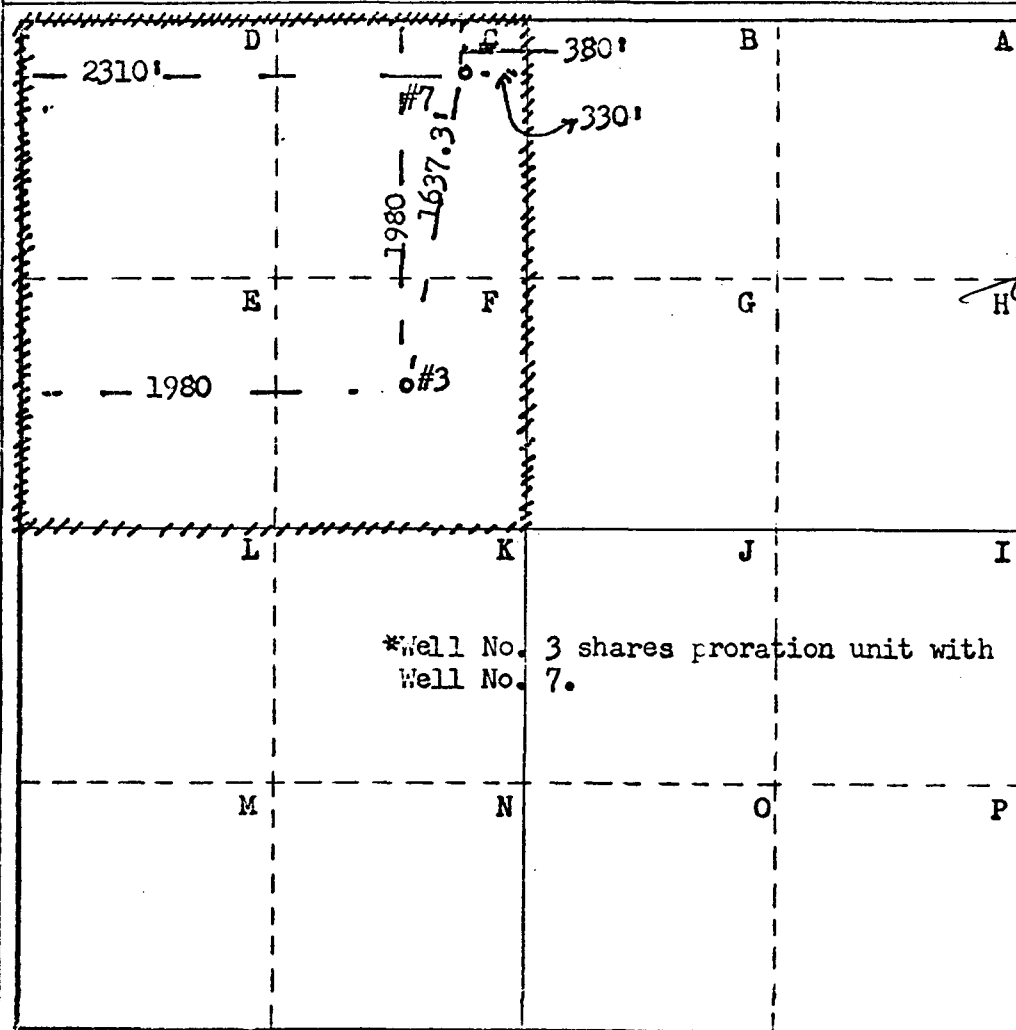
Operator <b>Phillips Petroleum Company</b>			Lease <b>Sims</b>		Well No. <b>3</b>
Unit Letter <b>F</b>	Section <b>24</b>	Township <b>22-S</b>	Range <b>37-E</b>	County <b>Lea</b>	
Actual Footage Location of Well: <b>1980</b> feet from the <b>north</b> line and <b>1980</b> feet from the <b>west</b> line					
Ground Level Elev. <b>3322.7' Gr., 3334.5' RKB</b>		Producing Formation <b>Tubb-Gas</b>		Pool <b>Tubb-Gas</b>	
				Dedicated Acreage: <b>*160</b> Acres	

1. Outline the acreage dedicated to the subject well by colored pencil or hatchure marks on the plat below.
2. If more than one lease is dedicated to the well, outline each and identify the ownership thereof (both as to working interest and royalty).
3. If more than one lease of different ownership is dedicated to the well, have the interests of all owners been consolidated by communitization, unitization, force-pooling, etc?

☐ Yes ☐ No If answer is "yes," type of consolidation \_\_\_\_\_

If answer is "no," list the owners and tract descriptions which have actually been consolidated. (Use reverse side of this form if necessary.) \_\_\_\_\_

No allowable will be assigned to the well until all interests have been consolidated (by communitization, unitization, forced-pooling, or otherwise) or until a non-standard unit, eliminating such interests, has been approved by the Commission.



CERTIFICATION

I hereby certify that the information contained herein is true and complete to the best of my knowledge and belief.

Name  
**W. J. Mueller**

Position  
**Engineering Advisor**

Company  
**Phillips Petroleum Company**

Date  
**April 20, 1977**

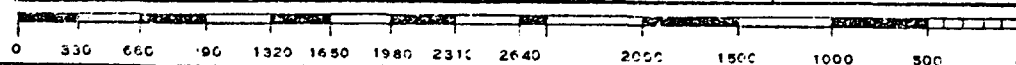
I hereby certify that the well location shown on this plat was plotted from field notes of actual surveys made by me or under my supervision, and that the same is true and correct to the best of my knowledge and belief.

Date Surveyed  
**2-21-73**

Registered Professional Engineer and/or Land Surveyor

**John W. West**

Certificate No.  
**676**

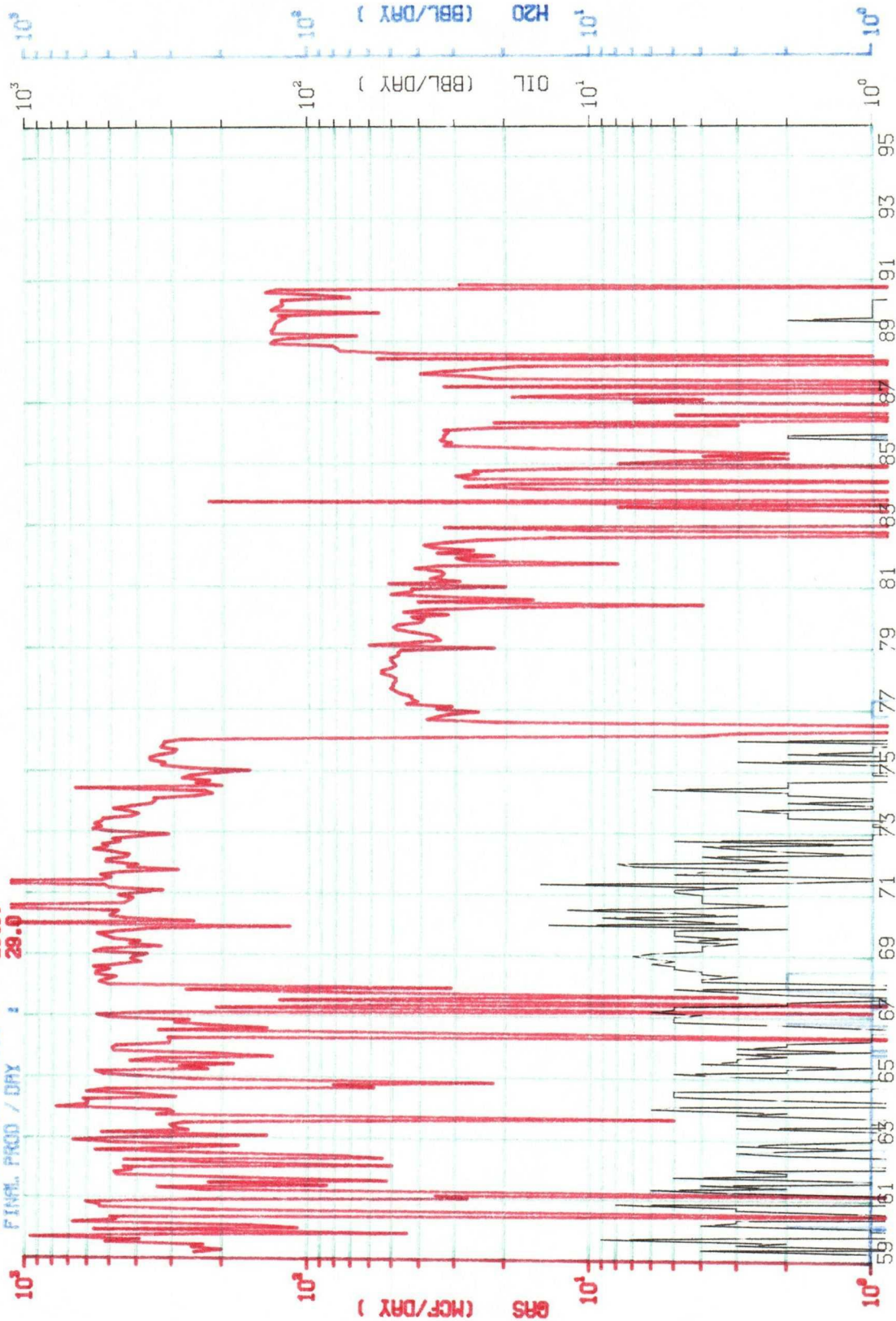


<p>SO PENROSE SKELETON UNIT</p> <p>22</p> <p>23</p> <p>24</p> <p>25</p> <p>26</p> <p>27</p> <p>28</p> <p>29</p> <p>30</p> <p>31</p> <p>32</p> <p>33</p> <p>34</p> <p>35</p> <p>36</p> <p>37</p> <p>38</p> <p>39</p> <p>40</p> <p>41</p> <p>42</p> <p>43</p> <p>44</p> <p>45</p> <p>46</p> <p>47</p> <p>48</p> <p>49</p> <p>50</p> <p>51</p> <p>52</p> <p>53</p> <p>54</p> <p>55</p> <p>56</p> <p>57</p> <p>58</p> <p>59</p> <p>60</p> <p>61</p> <p>62</p> <p>63</p> <p>64</p> <p>65</p> <p>66</p> <p>67</p> <p>68</p> <p>69</p> <p>70</p> <p>71</p> <p>72</p> <p>73</p> <p>74</p> <p>75</p> <p>76</p> <p>77</p> <p>78</p> <p>79</p> <p>80</p> <p>81</p> <p>82</p> <p>83</p> <p>84</p> <p>85</p> <p>86</p> <p>87</p> <p>88</p> <p>89</p> <p>90</p> <p>91</p> <p>92</p> <p>93</p> <p>94</p> <p>95</p> <p>96</p> <p>97</p> <p>98</p> <p>99</p> <p>100</p>	<p>SO PENROSE SKELETON UNIT</p> <p>22</p> <p>23</p> <p>24</p> <p>25</p> <p>26</p> <p>27</p> <p>28</p> <p>29</p> <p>30</p> <p>31</p> <p>32</p> <p>33</p> <p>34</p> <p>35</p> <p>36</p> <p>37</p> <p>38</p> <p>39</p> <p>40</p> <p>41</p> <p>42</p> <p>43</p> <p>44</p> <p>45</p> <p>46</p> <p>47</p> <p>48</p> <p>49</p> <p>50</p> <p>51</p> <p>52</p> <p>53</p> <p>54</p> <p>55</p> <p>56</p> <p>57</p> <p>58</p> <p>59</p> <p>60</p> <p>61</p> <p>62</p> <p>63</p> <p>64</p> <p>65</p> <p>66</p> <p>67</p> <p>68</p> <p>69</p> <p>70</p> <p>71</p> <p>72</p> <p>73</p> <p>74</p> <p>75</p> <p>76</p> <p>77</p> <p>78</p> <p>79</p> <p>80</p> <p>81</p> <p>82</p> <p>83</p> <p>84</p> <p>85</p> <p>86</p> <p>87</p> <p>88</p> <p>89</p> <p>90</p> <p>91</p> <p>92</p> <p>93</p> <p>94</p> <p>95</p> <p>96</p> <p>97</p> <p>98</p> <p>99</p> <p>100</p>	<p>SO PENROSE SKELETON UNIT</p> <p>22</p> <p>23</p> <p>24</p> <p>25</p> <p>26</p> <p>27</p> <p>28</p> <p>29</p> <p>30</p> <p>31</p> <p>32</p> <p>33</p> <p>34</p> <p>35</p> <p>36</p> <p>37</p> <p>38</p> <p>39</p> <p>40</p> <p>41</p> <p>42</p> <p>43</p> <p>44</p> <p>45</p> <p>46</p> <p>47</p> <p>48</p> <p>49</p> <p>50</p> <p>51</p> <p>52</p> <p>53</p> <p>54</p> <p>55</p> <p>56</p> <p>57</p> <p>58</p> <p>59</p> <p>60</p> <p>61</p> <p>62</p> <p>63</p> <p>64</p> <p>65</p> <p>66</p> <p>67</p> <p>68</p> <p>69</p> <p>70</p> <p>71</p> <p>72</p> <p>73</p> <p>74</p> <p>75</p> <p>76</p> <p>77</p> <p>78</p> <p>79</p> <p>80</p> <p>81</p> <p>82</p> <p>83</p> <p>84</p> <p>85</p> <p>86</p> <p>87</p> <p>88</p> <p>89</p> <p>90</p> <p>91</p> <p>92</p> <p>93</p> <p>94</p> <p>95</p> <p>96</p> <p>97</p> <p>98</p> <p>99</p> <p>100</p>	<p>SO PENROSE SKELETON UNIT</p> <p>22</p> <p>23</p> <p>24</p> <p>25</p> <p>26</p> <p>27</p> <p>28</p> <p>29</p> <p>30</p> <p>31</p> <p>32</p> <p>33</p> <p>34</p> <p>35</p> <p>36</p> <p>37</p> <p>38</p> <p>39</p> <p>40</p> <p>41</p> <p>42</p> <p>43</p> <p>44</p> <p>45</p> <p>46</p> <p>47</p> <p>48</p> <p>49</p> <p>50</p> <p>51</p> <p>52</p> <p>53</p> <p>54</p> <p>55</p> <p>56</p> <p>57</p> <p>58</p> <p>59</p> <p>60</p> <p>61</p> <p>62</p> <p>63</p> <p>64</p> <p>65</p> <p>66</p> <p>67</p> <p>68</p> <p>69</p> <p>70</p> <p>71</p> <p>72</p> <p>73</p> <p>74</p> <p>75</p> <p>76</p> <p>77</p> <p>78</p> <p>79</p> <p>80</p> <p>81</p> <p>82</p> <p>83</p> <p>84</p> <p>85</p> <p>86</p> <p>87</p> <p>88</p> <p>89</p> <p>90</p> <p>91</p> <p>92</p> <p>93</p> <p>94</p> <p>95</p> <p>96</p> <p>97</p> <p>98</p> <p>99</p> <p>100</p>	<p>SO PENROSE SKELETON UNIT</p> <p>22</p> <p>23</p> <p>24</p> <p>25</p> <p>26</p> <p>27</p> <p>28</p> <p>29</p> <p>30</p> <p>31</p> <p>32</p> <p>33</p> <p>34</p> <p>35</p> <p>36</p> <p>37</p> <p>38</p> <p>39</p> <p>40</p> <p>41</p> <p>42</p> <p>43</p> <p>44</p> <p>45</p> <p>46</p> <p>47</p> <p>48</p> <p>49</p> <p>50</p> <p>51</p> <p>52</p> <p>53</p> <p>54</p> <p>55</p> <p>56</p> <p>57</p> <p>58</p> <p>59</p> <p>60</p> <p>61</p> <p>62</p> <p>63</p> <p>64</p> <p>65</p> <p>66</p> <p>67</p> <p>68</p> <p>69</p> <p>70</p> <p>71</p> <p>72</p> <p>73</p> <p>74</p> <p>75</p> <p>76</p> <p>77</p> <p>78</p> <p>79</p> <p>80</p> <p>81</p> <p>82</p> <p>83</p> <p>84</p> <p>85</p> <p>86</p> <p>87</p> <p>88</p> <p>89</p> <p>90</p> <p>91</p> <p>92</p> <p>93</p> <p>94</p> <p>95</p> <p>96</p> <p>97</p> <p>98</p> <p>99</p> <p>100</p>	<p>SO PENROSE SKELETON UNIT</p> <p>22</p> <p>23</p> <p>24</p> <p>25</p> <p>26</p> <p>27</p> <p>28</p> <p>29</p> <p>30</p> <p>31</p> <p>32</p> <p>33</p> <p>34</p> <p>35</p> <p>36</p> <p>37</p> <p>38</p> <p>39</p> <p>40</p> <p>41</p> <p>42</p> <p>43</p> <p>44</p> <p>45</p> <p>46</p> <p>47</p> <p>48</p> <p>49</p> <p>50</p> <p>51</p> <p>52</p> <p>53</p> <p>54</p> <p>55</p> <p>56</p> <p>57</p> <p>58</p> <p>59</p> <p>60</p> <p>61</p> <p>62</p> <p>63</p> <p>64</p> <p>65</p> <p>66</p> <p>67</p> <p>68</p> <p>69</p> <p>70</p> <p>71</p> <p>72</p> <p>73</p> <p>74</p> <p>75</p> <p>76</p> <p>77</p> <p>78</p> <p>79</p> <p>80</p> <p>81</p> <p>82</p> <p>83</p> <p>84</p> <p>85</p> <p>86</p> <p>87</p> <p>88</p> <p>89</p> <p>90</p> <p>91</p> <p>92</p> <p>93</p> <p>94</p> <p>95</p> <p>96</p> <p>97</p> <p>98</p> <p>99</p> <p>100</p>	<p>SO PENROSE SKELETON UNIT</p> <p>22</p> <p>23</p> <p>24</p> <p>25</p> <p>26</p> <p>27</p> <p>28</p> <p>29</p> <p>30</p> <p>31</p> <p>32</p> <p>33</p> <p>34</p> <p>35</p> <p>36</p> <p>37</p> <p>38</p> <p>3</p>
--	--	--	--	--	--	--

3 /59-11/80

INITIAL PROD / DAY : 249.0  
REMAINING LIFE : 31.75

CUM PRODUCTION-MUNITS : 0.00  
FINAL PROD / DAY : 2540.0



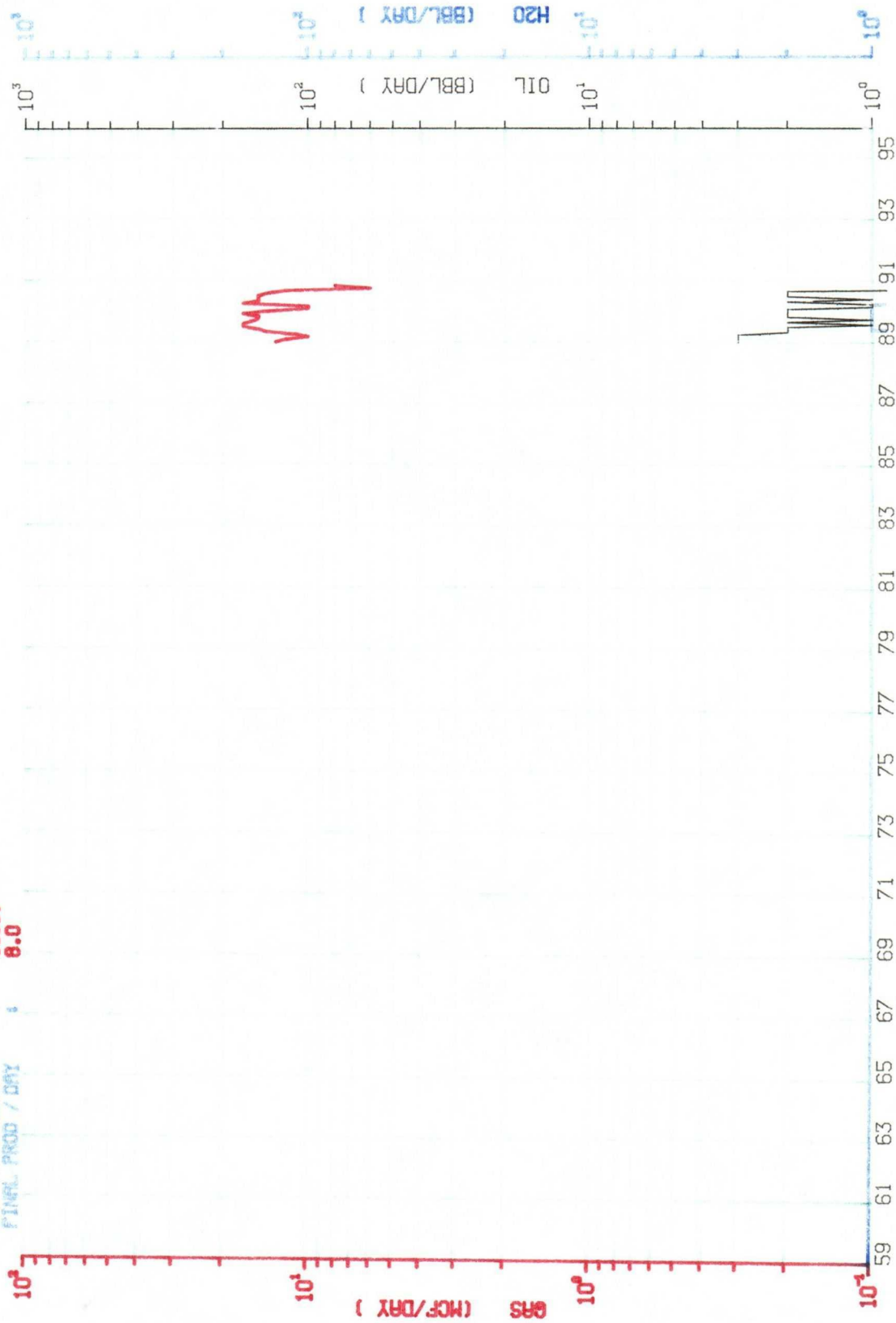
LEASE- 600022 : SIMS  
RESVR- 252 : TUBB  
WELL - 00003

PFRD  
SINGLE WELL 600022 252 00003  
NM 46, CL- NC, PM- NF, CT- DU



1 / 89-11/80

INITIAL PROD / DAY : 13.0  
 REMAINING LIFE : 1.92  
 0.00  
 CUM PRODUCTION : 9388.  
 FINAL PROD / DAY : 8.0

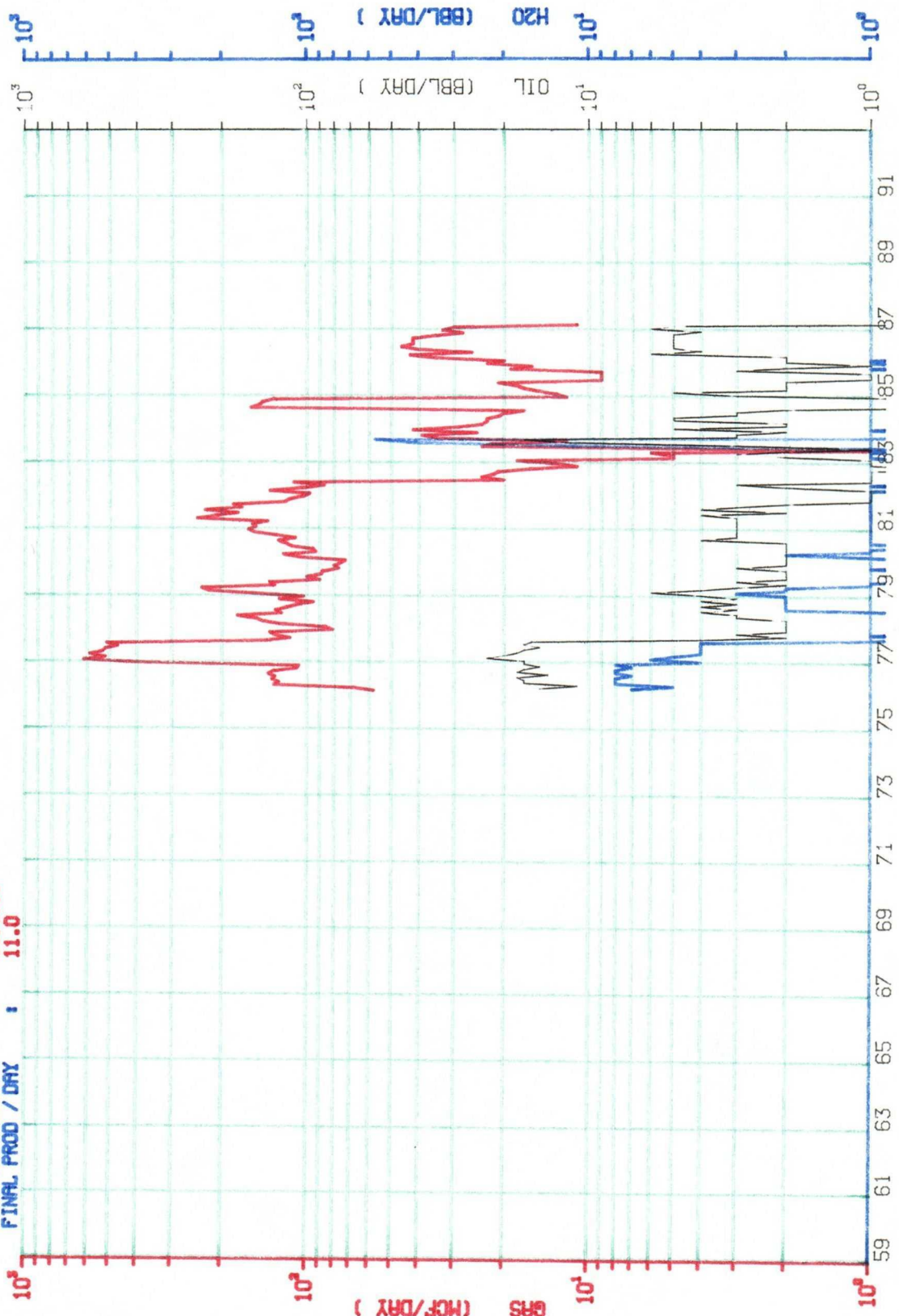


LEASE- 600022 : SIMS  
 RESVR- 161 : BRUNSON, E - DRINKARD AB  
 WELL - 00003

PPROD  
 SINGLE WELL 600022 161 00003  
 NY 46, CL- 0, PM- NF, CT- DU

3 /76-3 /87

INITIAL PROD / DAY : 58.0  
 REMAINING LIFE : 11.08  
 CUM PRODUCTION : 0.00  
 FINAL PROD / DAY : 441435.11.0

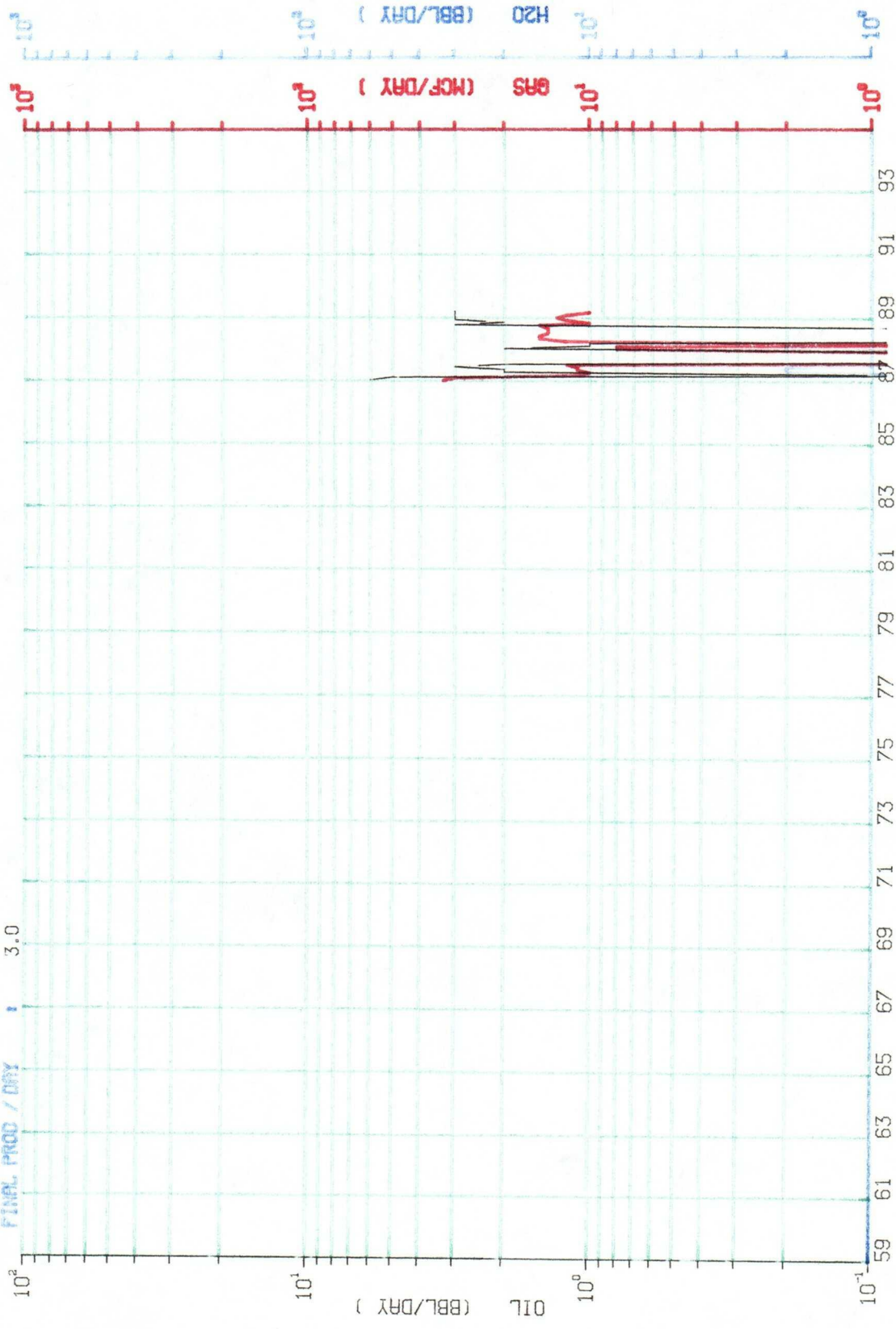


LEASE- 600022 : SIMS  
 RESVR- 158 : DRINKARD  
 WELL - 00003

PPROD  
 SINGLE WELL 600022 158 00003  
 NM 46, CL- NC, PM- PM , CT- DU

1 / 87-3 / 89

INITIAL PROD / DAY : 6.0  
 REMAINING LIFE : 2.25  
 CUM PRODUCTION : 0.00  
 FINAL PROD / DAY : 1247.  
 : 3.0



LEASE- 600022 : SIMS  
 RESVR- 160 : DRINKARD - DRINKARD  
 WELL - 00003

PPROD SINGLE WELL 600022 160 00003  
 NM 46, CL- 0 , PM- NF , CT- DU

Phillips Petroleum Company  
Application for Exception to  
Statewide Rule No. 303-C to  
Downhole Commingle Production

Royalty Interest Owners:

United New Mexico Bank at Lea County,  
Personal Representative for the  
Elizabeth Sims Daugherty Estate  
P.O. Box 5614  
Hobbs, New Mexico 88241

Winnie L. Sims Kennann  
P.O. Box 202  
Eunice, New Mexico 88231

G.P. Sims  
P.O. Box 1046  
Eunice, New Mexico 88231

Leo V. Sims  
423 East Baja  
Hobbs, New Mexico 88240

Ellie Sims Spear  
P.O. Drawer 309  
Hobbs, New Mexico 88240

Phillips Petroleum Company  
Application for Exception to  
Statewide Rule No. 303-C to  
Downhole Commingle Production

Offset Operators:

John H. Hendrix Corporation  
525 Midland Tower  
Midland, Texas 79701

Texas Pacific Oil Co. Inc.  
9400 N. Central Expressway  
Dallas, Texas 75250

Crown Central Petroleum Corp.  
Suite 1002, Wilco Bldg.  
Midland, TX 79701

Marathon Oil Company  
Box 552  
Midland, Texas 79702

Coquina Oil Corporation  
Box 2960  
Midland, Texas 79701

Union Texas Petroleum  
1300 Wilco Bldg.  
Midland, Texas 79701

Gulf Energy & Minerals, Inc.  
Box 1150  
Midland, Texas 79701

Samedan Oil Corporation  
900 Wall Towers East  
Midland, Texas 79701

Bruce A. Wilbanks  
Box 763  
Midland, Texas 79701



STATE OF NEW MEXICO  
ENERGY AND MINERALS DEPARTMENT  
OIL CONSERVATION DIVISION  
HOBBS DISTRICT OFFICE  
February 18, 1991

GARREY CARRUTHERS  
GOVERNOR

POST OFFICE BOX 1980  
HOBBS, NEW MEXICO 88241-1980  
(505) 393-6161

OIL CONSERVATION DIVISION  
P. O. BOX 2088  
SANTA FE, NEW MEXICO 87501

RE: Proposed:

MC \_\_\_\_\_  
DHC XX \_\_\_\_\_  
NSL \_\_\_\_\_  
NSP \_\_\_\_\_  
SWD \_\_\_\_\_  
WFX \_\_\_\_\_  
PMX \_\_\_\_\_

Gentlemen:

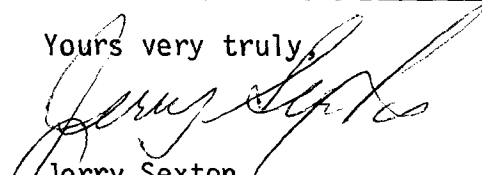
I have examined the application for the:

Phillips petroleum Co.	Sims #3-F	24-22-37
Operator	Lease & Well No.	Unit S-T-R

and my recommendations are as follows:

OK

Yours very truly,

  
Jerry Sexton  
Supervisor, District 1

/ed