

PTC  
229137

ABOVE THIS LINE FOR DIVISION USE ONLY

**NEW MEXICO OIL CONSERVATION DIVISION**  
 - Engineering Bureau -  
 1220 South St. Francis Drive, Santa Fe, NM 87505



COG  
Taylor D #25

**ADMINISTRATIVE APPLICATION CHECKLIST**

THIS CHECKLIST IS MANDATORY FOR ALL ADMINISTRATIVE APPLICATIONS FOR EXCEPTIONS TO DIVISION RULES AND REGULATIONS WHICH REQUIRE PROCESSING AT THE DIVISION LEVEL IN SANTA FE

**Application Acronyms:**

- [NSL-Non-Standard Location]** **[NSP-Non-Standard Proration Unit]** **[SD-Simultaneous Dedication]**
- [DHC-Downhole Commingling]** **[CTB-Lease Commingling]** **[PLC-Pool/Lease Commingling]**
- [PC-Pool Commingling]** **[OLS - Off-Lease Storage]** **[OLM-Off-Lease Measurement]**
- [WFX-Waterflood Expansion]** **[PMX-Pressure Maintenance Expansion]**
- [SWD-Salt Water Disposal]** **[IPI-Injection Pressure Increase]**
- [EOR-Qualified Enhanced Oil Recovery Certification]** **[PPR-Positive Production Response]**

6615

[1] **TYPE OF APPLICATION** - Check Those Which Apply for [A]

- [A] Location - Spacing Unit - Simultaneous Dedication  
 NSL  NSP  SD

Check One Only for [B] or [C]

- [B] Commingling - Storage - Measurement  
 DHC  CTB  PLC  PC  OLS  OLM

- [C] Injection - Disposal - Pressure Increase - Enhanced Oil Recovery  
 WFX  PMX  SWD  IPI  EOR  PPR

[D] Other: Specify \_\_\_\_\_

2012 APR 20 A 10:13  
 RECEIVED OGD  
 Lee  
 J-9-175-32E

[2] **NOTIFICATION REQUIRED TO:** - Check Those Which Apply, or  Does Not Apply INTEREST ARE THE SAME

- [A]  Working, Royalty or Overriding Royalty Interest Owners
- [B]  Offset Operators, Leaseholders or Surface Owner
- [C]  Application is One Which Requires Published Legal Notice
- [D]  Notification and/or Concurrent Approval by BLM or SLO  
U.S. Bureau of Land Management - Commissioner of Public Lands, State Land Office
- [E]  For all of the above, Proof of Notification or Publication is Attached, and/or,
- [F]  Waivers are Attached

[3] **SUBMIT ACCURATE AND COMPLETE INFORMATION REQUIRED TO PROCESS THE TYPE OF APPLICATION INDICATED ABOVE.**

[4] **CERTIFICATION:** I hereby certify that the information submitted with this application for administrative approval is **accurate** and **complete** to the best of my knowledge. I also understand that **no action** will be taken on this application until the required information and notifications are submitted to the Division.

Note: Statement must be completed by an individual with managerial and/or supervisory capacity.

|   |               |  |                        |
|---|---------------|--|------------------------|
| <u>Kelly J. Holly</u><br>Print or Type Name | <br>Signature | <u>Permitting Tech</u><br>Title            | <u>4-19-12</u><br>Date |
| <u>(432) 685-4384</u><br>Phone Number       |               | <u>kholly@concho.com</u><br>E-mail Address |                        |

**Taylor D #25  
Lea County, NM**

COG proposes to drill a **VERTICAL** NW/4 SE/4, 40 acre spacing  
Maljamar; Yeso, West oil well  
TD of approximately 7000'

**Location:**

2460' FSL & 1680' FEL Sec 9, T17S, R32E, Unit J

**This well had to be drilled at a non-standard location due to a buried pipeline and electric line being too close to original location.**

The plan for this well is to complete it in the Yeso formation.  
We won't know the exact perms until we drill & log it, but it will be very similar to the J C Federal #9 (1650' FNL & 1650' FEL, Section 22, T17S, R32E, UL G) which was completed in October 2007.

The J C Federal #9 completion has Yeso perms from 5478' – 6535', divided into 3 perf/stimulation intervals.

1<sup>st</sup> interval: 5478' – 5840',  
acidized w/ 3000 gals,  
frac'd w/ 42,294 gals 40# linear gel; 38,096 gal 30# linear gel; 7,382# LiteProp; 22,049# 16/30 white; 21,873# SiberProp resin coated; Flush w/5,292 gal linear gel.

2<sup>nd</sup> interval: 6055' – 6255',  
acidized w/ 5342 gals,  
frac'd w/ 50,048# gal gel & 61,612 gals 16/30 sand.

3<sup>rd</sup> interval: 6335' – 6535',  
acidized w/ 5000 gals,  
frac'd w/ 49,601# gal gel & 45,586 gals 16/30 sand.

**Attachment 1**

Plat & map

**Attachment 2**

Map & legend of offset wells.

**Attachment 3**

Updated land plat showing COG Operating LLC acreage.

The acreage we are encroaching is the SW/4 NE/4, SE/4 NE/4 and NE/4 SE/4 of Section 9.

Interests are the same.

COG Operating LLC respectfully requests permission to have this NSL approved.

DISTRICT I  
1625 N. French Dr., Hobbs, NM 88240  
Phone: (575) 393-6161 Fax: (575) 393-0720

DISTRICT II  
811 S. First St., Artesia, NM 88210  
Phone: (575) 748-1283 Fax: (575) 748-9720

DISTRICT III  
1000 Rio Brazos Road, Aztec, NM 87410  
Phone: (505) 334-6178 Fax: (505) 334-6170

DISTRICT IV  
1220 S. St. Francis Dr., Santa Fe, NM 87505  
Phone: (505) 476-3460 Fax: (505) 476-3462

State of New Mexico  
Energy, Minerals & Natural Resources Department  
OIL CONSERVATION DIVISION  
1220 South St. Francis Dr.  
Santa Fe, New Mexico 87505

Form C-102  
Revised August 1, 2011  
Submit one copy to appropriate  
District Office

AMENDED REPORT

WELL LOCATION AND ACREAGE DEDICATION PLAT

|                            |                                     |                                  |
|----------------------------|-------------------------------------|----------------------------------|
| API Number<br>30-025-40547 | Pool Code<br>44500                  | Pool Name<br>Maljamar; Yeso West |
| Property Code<br>37687     | Property Name<br>TAYLOR D           | Well Number<br>25                |
| OGRID No.<br>229137        | Operator Name<br>COG OPERATING, LLC | Elevation<br>4090'               |

Surface Location

| UL or lot No. | Section | Township | Range | Lot Idn | Feet from the | North/South line | Feet from the | East/West line | County |
|---------------|---------|----------|-------|---------|---------------|------------------|---------------|----------------|--------|
| J             | 9       | 17-S     | 32-E  |         | 2460          | SOUTH            | 1680          | EAST           | LEA    |

Bottom Hole Location If Different From Surface

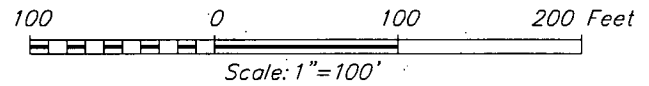
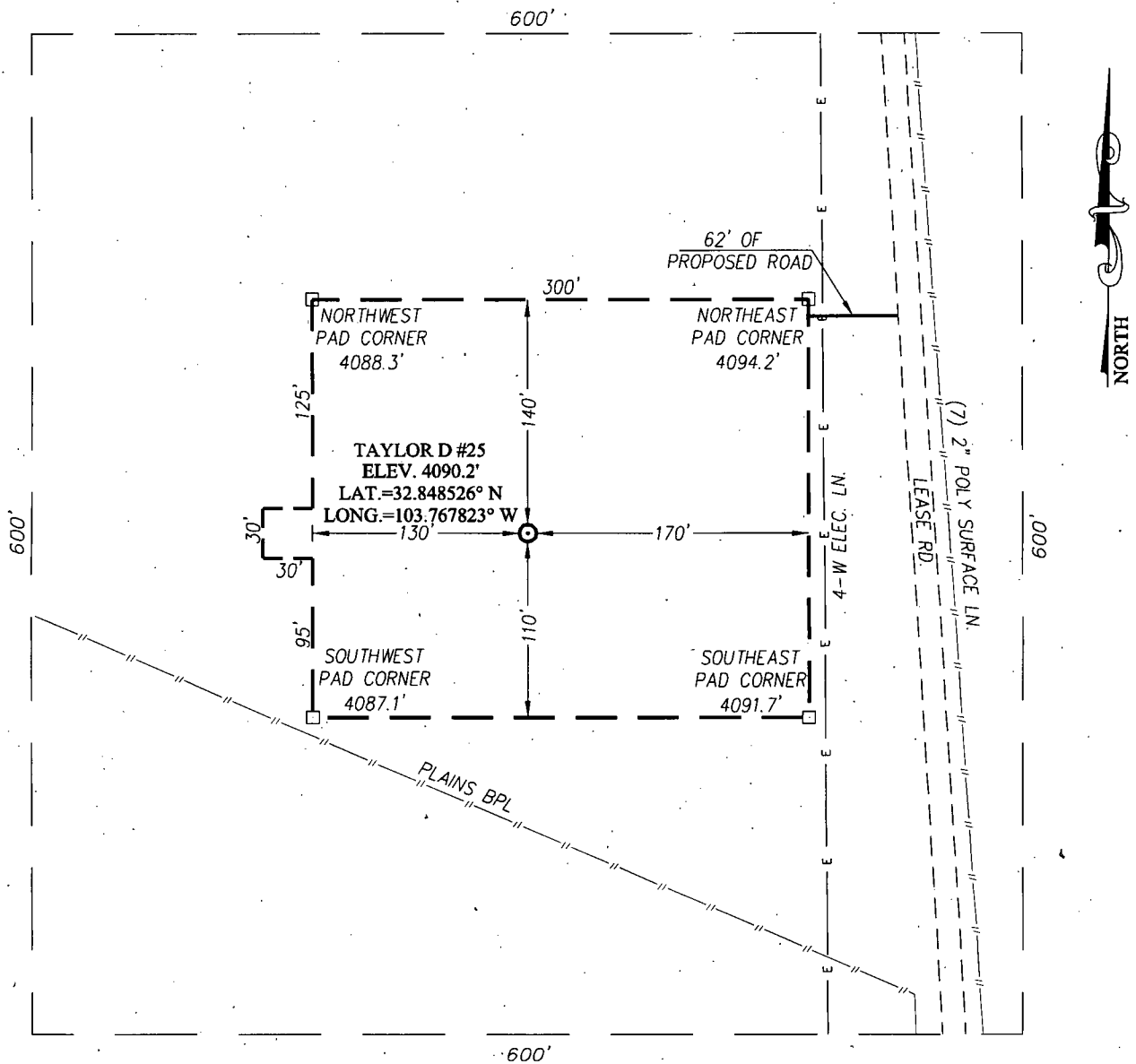
| UL or lot No. | Section | Township | Range | Lot Idn | Feet from the | North/South line | Feet from the | East/West line | County |
|---------------|---------|----------|-------|---------|---------------|------------------|---------------|----------------|--------|
|               |         |          |       |         |               |                  |               |                |        |

|                       |                 |                    |           |
|-----------------------|-----------------|--------------------|-----------|
| Dedicated Acres<br>40 | Joint or Infill | Consolidation Code | Order No. |
|-----------------------|-----------------|--------------------|-----------|

NO ALLOWABLE WILL BE ASSIGNED TO THIS COMPLETION UNTIL ALL INTERESTS HAVE BEEN CONSOLIDATED OR A NON-STANDARD UNIT HAS BEEN APPROVED BY THE DIVISION

|  |   |
|--|---|
|  | <p><b>OPERATOR CERTIFICATION</b></p> <p>I hereby certify that the information herein is true and complete to the best of my knowledge and belief, and that this organization either owns a working interest or unleased mineral interest in the land including the proposed bottom hole location or has a right to drill this well at this location pursuant to a contract with an owner of such mineral or working interest, or to a voluntary pooling agreement or a compulsory pooling order heretofore entered by the division.</p> <p><i>[Signature]</i> 4-19-12<br/>Signature Date</p> <p>Kelly J. Holly<br/>Printed Name</p> <p>kholly@concho.com<br/>E-mail Address</p> |
|  | <p><b>SURVEYOR CERTIFICATION</b></p> <p>I hereby certify that the well location shown on this plat was plotted from field notes of actual surveys made by me or under my supervision, and that the same is true and correct to the best of my belief.</p> <p>MARCH 20, 2012<br/>Date of Survey</p> <p>Signature &amp; Seal of Professional Surveyor:<br/> </p> <p>Certificate Number: Gary Eidson 12641<br/>Ronald J. Eidson 3239</p> <p>AP JWSC W.O.: 12.11.0312</p>   |

**SECTION 9, TOWNSHIP 17 SOUTH, RANGE 32 EAST, N.M.P.M.**  
**EDDY COUNTY** **NEW MEXICO**



**DIRECTIONS TO LOCATION**

FROM L126 (MALJAMAR RD.) AND U.S. HWY. 82 GO SOUTH APPROX. 0.6 MILES. TURN RIGHT AND GO SOUTHWEST APPROX. 0.3 MILES. TURN RIGHT AND GO NORTH APPROX. 0.1 MILES. THE LOCATION STAKE IS APPROX. 232 FEET WEST OF THE LEASE RD.

PROVIDING SURVEYING SERVICES SINCE 1946  
**JOHN WEST SURVEYING COMPANY**  
 412 N. DAL PASO  
 HOBBS, N.M. 88240  
 (575) 393-3117 www.jwsc.biz

**COG OPERATING, LLC**

**TAYLOR D #25 WELL**  
 LOCATED 2460 FEET FROM THE SOUTH LINE  
 AND 1680 FEET FROM THE EAST LINE OF SECTION 9,  
 TOWNSHIP 17 SOUTH, RANGE 32 EAST, N.M.P.M.,  
 LEA COUNTY, NEW MEXICO

|                      |                  |                         |
|----------------------|------------------|-------------------------|
| Survey Date: 3/20/12 | CAD Date: 4/3/12 | Drawn By: AF            |
| W.O. No.: 12110312   | Rev: .           | Rel. W.O.: Sheet 1 of 1 |

## Producing wells in Sec 9, T17S, R32E, Lea County

| API#         | Operator                | Lease                  | Well# | County | Legal             | Total Depth | Well Type | Well Status           | First Prod. | Last Prod. | Avg. (BO/D) |
|--------------|-------------------------|------------------------|-------|--------|-------------------|-------------|-----------|-----------------------|-------------|------------|-------------|
| 30-025-21388 | WISER OIL CO (THE)      | MALJAMAR GRAYBURG UNIT | 039   | LEA    | S:9, T:17S, R:32E | 4,180       | O         | Temporarily Abandoned | Jan 1967    | Nov 1975   | 0.20        |
| 30-025-00488 | CHEVRON U S A INC       | MALJAMAR GRAYBURG UNIT | 042   | LEA    | S:9, T:17S, R:32E | 4,122       | G         | Active                | Jan 1967    | May 1967   | 0.42        |
| 30-025-00484 | WISER OIL CO (THE)      | MALJAMAR GRAYBURG UNIT | 035   | LEA    | S:9, T:17S, R:32E | 0           | O         | Temporarily Abandoned | Jan 1967    | Nov 1976   | 0.43        |
| 30-025-34117 | LINN OPERATING, INC.    | MALJAMAR GRAYBURG UNIT | 103   | LEA    | S:9, T:17S, R:32E | 4,400       | O         | Pumping               | Oct 1997    | Jan 2012   | 0.45        |
| 30-025-00000 | SINCLAIR OIL AND GAS CO | A C TAYLOR ET AL       | 003   | LEA    | S:9, T:17S, R:32E |             | AP        | Unknown               | Aug 1965    | Apr 1966   | 0.57        |
| 30-025-21379 | LINN OPERATING, INC.    | MALJAMAR GRAYBURG UNIT | 043   | LEA    | S:9, T:17S, R:32E | 4,116       | O         | Active                | Jan 1967    | Jan 2012   | 0.74        |
| 30-025-00487 | LINN OPERATING, INC.    | MALJAMAR GRAYBURG UNIT | 045   | LEA    | S:9, T:17S, R:32E | 0           | O         | Active                | Jan 1967    | Jan 2012   | 0.77        |
| 30-025-00000 | NICHOLS                 | TAYLOR                 | 001   | LEA    | S:9, T:17S, R:32E |             | G         | Active                | May 1960    | Dec 1966   | 0.84        |
| 30-025-00000 | BOLLER & NICHOLS        | ABBIE ILES             | 001   | LEA    | S:9, T:17S, R:32E |             | O         | Active                | Jan 1945    | Dec 1966   | 1.06        |
| 30-025-00000 | BOLLER NICHOLS          | ILES X FED             | 004   | LEA    | S:9, T:17S, R:32E |             | G         | Active                | Jan 1960    | Dec 1966   | 1.13        |
| 30-025-00000 | SINCLAIR OIL AND GAS CO | MALJAMAR GRAYBURG UNIT | 046   | LEA    | S:9, T:17S, R:32E |             | G         | Active                | Jan 1967    | May 1967   | 1.16        |
| 30-025-21076 | CHEVRON U S A INC       | MALJAMAR GRAYBURG UNIT | 033   | LEA    | S:9, T:17S, R:32E | 4,040       | O         | Active                | Jan 1967    | Jun 1992   | 1.37        |
| 30-025-00482 | CHEVRON U S A INC       | MALJAMAR GRAYBURG UNIT | 048   | LEA    | S:9, T:17S, R:32E |             | G         | Active                | Jan 1967    | May 1967   | 1.39        |
| 30-025-21386 | LINN OPERATING, INC.    | MALJAMAR GRAYBURG UNIT | 041   | LEA    | S:9, T:17S, R:32E | 4,175       | O         | Pumping               | Jan 1967    | Jan 2012   | 1.52        |
| 30-025-39399 | COG OPERATING LLC       | TAYLOR D               | 2     | LEA    | S:9, T:17S, R:32E | 7,006       | O         | Active Permit         | Oct 2010    | Jan 2012   | 1.52        |
| 30-025-00481 | LINN OPERATING, INC.    | MALJAMAR GRAYBURG UNIT | 047   | LEA    | S:9, T:17S, R:32E | 0           | O         | Pumping               | Jan 1967    | Jan 2012   | 1.55        |
| 30-025-21380 | CHEVRON U S A INC       | MALJAMAR GRAYBURG UNIT | 044   | LEA    | S:9, T:17S, R:32E | 4,120       | G         | Active                | Jan 1967    | May 1967   | 1.74        |
| 30-025-21376 | CHEVRON U S A INC       | MALJAMAR GRAYBURG UNIT | 037   | LEA    | S:9, T:17S, R:32E | 4,110       | O         | Active                | Jan 1967    | Dec 1969   | 1.94        |
| 30-025-00000 | BOLLER NICHOLS          | ILES FEDERAL           | 011   | LEA    | S:9, T:17S, R:32E |             | G         | Active                | Jun 1960    | Dec 1966   | 2.00        |
| 30-025-00000 | SINCLAIR OIL AND GAS CO | ILES FEDERAL           | 038   | LEA    | S:9, T:17S, R:32E |             | AP        | Unknown               | Sep 1965    | Dec 1966   | 3.03        |
| 30-025-00000 | NICHOLS LEONARD         | ILES FEDERAL           | 020   | LEA    | S:9, T:17S, R:32E |             | G         | Active                | Aug 1961    | Dec 1963   | 3.58        |
| 30-025-21378 | CHEVRON U S A INC       | MALJAMAR GRAYBURG UNIT | 038   | LEA    | S:9, T:17S, R:32E | 4,150       | G         | Active                | Jan 1967    | Jun 1967   | 4.23        |
|              |                         |                        |       |        | S:9, T:17S,       |             |           |                       |             |            |             |

|              |                         |                  |     |     |                   |       |    |               |          |          |       |
|--------------|-------------------------|------------------|-----|-----|-------------------|-------|----|---------------|----------|----------|-------|
| 30-025-00000 | NICHOLS LEONARD         | ILES FEDERAL     | 021 | LEA | R:32E             |       | G  | Active        | Jan 1962 | Dec 1963 | 5.03  |
| 30-025-00000 | SINCLAIR OIL AND GAS CO | ILES FEDERAL     | 039 | LEA | S:9, T:17S, R:32E |       | AP | Unknown       | Sep 1965 | Dec 1966 | 5.61  |
| 30-025-00000 | SINCLAIR OIL AND GAS CO | ILES FEDERAL     | 035 | LEA | S:9, T:17S, R:32E |       | AP | Unknown       | Jun 1965 | Dec 1966 | 5.84  |
| 30-025-00000 | SINCLAIR OIL AND GAS CO | A C TAYLOR ET AL | 002 | LEA | S:9, T:17S, R:32E |       | AP | Unknown       | Jul 1965 | Dec 1966 | 6.61  |
| 30-025-00000 | BOLLER NICHOLS          | ILES X FED       | 005 | LEA | S:9, T:17S, R:32E |       | G  | Active        | Jan 1960 | Dec 1966 | 6.65  |
| 30-025-00000 | SINCLAIR OIL AND GAS CO | ILES FEDERAL     | 037 | LEA | S:9, T:17S, R:32E |       | AP | Unknown       | Aug 1965 | Dec 1966 | 14.94 |
| 30-025-39401 | COG OPERATING LLC       | TAYLOR D         | 4   | LEA | S:9, T:17S, R:32E | 7,020 | O  | Active Permit | Dec 2010 | Jan 2012 | 17.55 |
| 30-025-00000 | SINCLAIR OIL AND GAS CO | A C TAYLOR ET AL | 004 | LEA | S:9, T:17S, R:32E |       | AP | Unknown       | Aug 1965 | Dec 1966 | 22.94 |
| 30-025-39493 | COG OPERATING LLC       | TAYLOR D         | 5   | LEA | S:9, T:17S, R:32E | 7,022 | O  | Active Permit | Mar 2011 | Jan 2012 | 24.55 |
| 30-025-39400 | COG OPERATING LLC       | TAYLOR D         | 3   | LEA | S:9, T:17S, R:32E | 7,018 | O  | Active Permit | Aug 2011 | Jan 2012 | 29.94 |
| 30-025-00000 | NICHOLS LEONARD         | ILES FEDERAL     | 019 | LEA | S:9, T:17S, R:32E |       | G  | Active        | Aug 1961 | Dec 1966 | 36.19 |
| 30-025-00000 | SINCLAIR OIL AND GAS CO | A C TAYLOR B     | 002 | LEA | S:9, T:17S, R:32E |       | AP | Unknown       | Jan 1965 | Dec 1966 | 64.55 |



Well name: Taylor D #25  
Operator: COG Operating  
LLC  
T17S-R32E Sec 9 UL-J

PEARL  
REG.  
WT

Non Standard Location  
Operator: COG Operating LLC  
100%  
T17S-R32E Sec 9 UL-G,H,&I

