

DATE IN 5-9-12	SUSPENSE	ENGINEER DB	LOGGED IN	TYPE NSL	APP NO. 1213050330
----------------	----------	-------------	-----------	----------	--------------------

ABOVE THIS LINE FOR DIVISION USE ONLY

**NEW MEXICO OIL CONSERVATION DIVISION**  
 - Engineering Bureau -  
 1220 South St. Francis Drive, Santa Fe, NM 87505



PT&W  
 COG  
 GJ West Co. of U#325

**ADMINISTRATIVE APPLICATION CHECKLIST**

THIS CHECKLIST IS MANDATORY FOR ALL ADMINISTRATIVE APPLICATIONS FOR EXCEPTIONS TO DIVISION RULES AND REGULATIONS WHICH REQUIRE PROCESSING AT THE DIVISION LEVEL IN SANTA FE

**Application Acronyms:**

**[NSL-Non-Standard Location] [NSP-Non-Standard Proration Unit] [SD-Simultaneous Dedication]**  
**[DHC-Downhole Commingling] [CTB-Lease Commingling] [PLC-Pool/Lease Commingling]**  
**[PC-Pool Commingling] [OLS - Off-Lease Storage] [OLM-Off-Lease Measurement]**  
**[WFX-Waterflood Expansion] [PMX-Pressure Maintenance Expansion]**  
**[SWD-Salt Water Disposal] [IPI-Injection Pressure Increase]**  
**[EOR-Qualified Enhanced Oil Recovery Certification] [PPR-Positive Production Response]**

- [1] **TYPE OF APPLICATION** - Check Those Which Apply for [A]  
 [A] Location - Spacing Unit - Simultaneous Dedication  
☒ NSL ☐ NSP ☐ SD

Check One Only for [B] or [C]

- [B] Commingling - Storage - Measurement  
☐ DHC ☐ CTB ☐ PLC ☐ PC ☐ OLS ☐ OLM

- [C] Injection - Disposal - Pressure Increase - Enhanced Oil Recovery  
☐ WFX ☐ PMX ☐ SWD ☐ IPI ☐ EOR ☐ PPR

- [D] Other: Specify \_\_\_\_\_

- [2] **NOTIFICATION REQUIRED TO:** - Check Those Which Apply, or ☒ Does Not Apply INTEREST ARE THE SAME

- [A] ☐ Working, Royalty or Overriding Royalty Interest Owners  
 [B] ☐ Offset Operators, Leaseholders or Surface Owner  
 [C] ☐ Application is One Which Requires Published Legal Notice  
 [D] ☐ Notification and/or Concurrent Approval by BLM or SLO  
U.S. Bureau of Land Management - Commissioner of Public Lands, State Land Office  
 [E] ☐ For all of the above, Proof of Notification or Publication is Attached, and/or,  
 [F] ☐ Waivers are Attached

- [3] **SUBMIT ACCURATE AND COMPLETE INFORMATION REQUIRED TO PROCESS THE TYPE OF APPLICATION INDICATED ABOVE.**

[4] **CERTIFICATION:** I hereby certify that the information submitted with this application for administrative approval is **accurate** and **complete** to the best of my knowledge. I also understand that **no action** will be taken on this application until the required information and notifications are submitted to the Division.

**Note:** Statement must be completed by an individual with managerial and/or supervisory capacity.

Kelly J. Holly  
 Print or Type Name

Signature

Permitting Tech  
 Title

5-8-12  
 Date

(432) 685-4384  
 Phone Number

kholly@concho.com  
 E-mail Address

RECEIVED OGD  
 2012 MAY -9 A 10:49

**G J West Coop Unit #325  
Eddy County, NM**

COG is requesting to drill a vertical NW/4 SW/4 40 acre spacing  
GJ; 7RVS-QN-GB-GLORIETA-YESO oil well  
TD of approximately 5700'

Non-standard Location:  
1650' FSL & 1040' FWL Sec 16, T17S, R29E, Unit L

**This well had to be staked at a non-standard location due to a water line  
too close to original location.**

The plan for this well is to complete it in the Yeso formation.  
We won't know the exact perms until we drill & log it, but it will be very similar to  
the G J West Coop Unit #149 which was drilled and is located 2310' FSL 2310'  
FWL, Section 21, T17S, R29E, Unit K.

The G J West Coop Unit #149 completion divided the Yeso up into 3  
perf/stimulation intervals:

1<sup>st</sup> interval: 5153' – 5381',  
acidized w/ 2500 gals,  
frac'd w/ 6014 gals 40# gel, 30,777 gals 30# gel, 56,847 gals 40# gel, 8000#  
LiteProp, 74,940# 16/30 White Sand, 15,920# SiberProp 16/30 sand.

2<sup>nd</sup> interval: 4914' – 5050',  
acidized w/ 1975 gals,  
frac'd w/ 6002 gals 40# gel, 30,757 gals 30# gel, 47,321 gals 40# gel, 8000#  
LiteProp, 74,800# 16/30 sand & 15,700# SiberProp 16/30 sand.

3<sup>rd</sup> interval: 4613' – 4814',  
acidized w/ 1850 gals,  
frac'd w/ 93,882 gals gel, 8019# LiteProp, 74,900# 16/30 White Sand, 16,220#  
SiberProp.

**Attachment 1  
Plat & Map**

**Attachment 2  
Map & legend of offset wells.**

**Attachment 3  
Updated land plat showing that COG owns the offset acreage.**

The acreage we are encroaching on is Unit K of Section 16.

Interests are the same.

COG Operating LLC respectfully requests permission to have this NSL approved.

DISTRICT I  
1625 N. French Dr., Hobbs, NM 88240  
Phone: (575) 393-6161 Fax: (575) 393-0720  
DISTRICT II  
811 S. First St., Artesia, NM 88210  
Phone: (575) 748-1283 Fax: (575) 748-9720  
DISTRICT III  
1000 Rio Brazos Road, Aztec, NM 87410  
Phone: (505) 334-6178 Fax: (505) 334-6170  
DISTRICT IV  
1220 S. St. Francis Dr., Santa Fe, NM 87505  
Phone: (505) 476-3460 Fax: (505) 476-3462

State of New Mexico  
Energy, Minerals & Natural Resources Department  
OIL CONSERVATION DIVISION  
1220 South St. Francis Dr.  
Santa Fe, New Mexico 87505

Form C-102  
Revised August 1, 2011  
Submit one copy to appropriate  
District Office

☐ AMENDED REPORT

WELL LOCATION AND ACREAGE DEDICATION PLAT

API Number 30-015-40265	Pool Code 97558	Pool Name GJ; 7RVS-QN-GB-Glorieta YEsO
Property Code 302497	Property Name G-J WEST COOP UNIT	Well Number 325
OGRID No: 229137	Operator Name COG OPERATING, LLC	Elevation 3583'

Surface Location

UL or lot No. L	Section 16	Township 17-S	Range 29-E	Lot Idn	Feet from the 1650	North/South line SOUTH	Feet from the 1040	East/West line WEST	County EDDY
--------------------	---------------	------------------	---------------	---------	-----------------------	---------------------------	-----------------------	------------------------	----------------

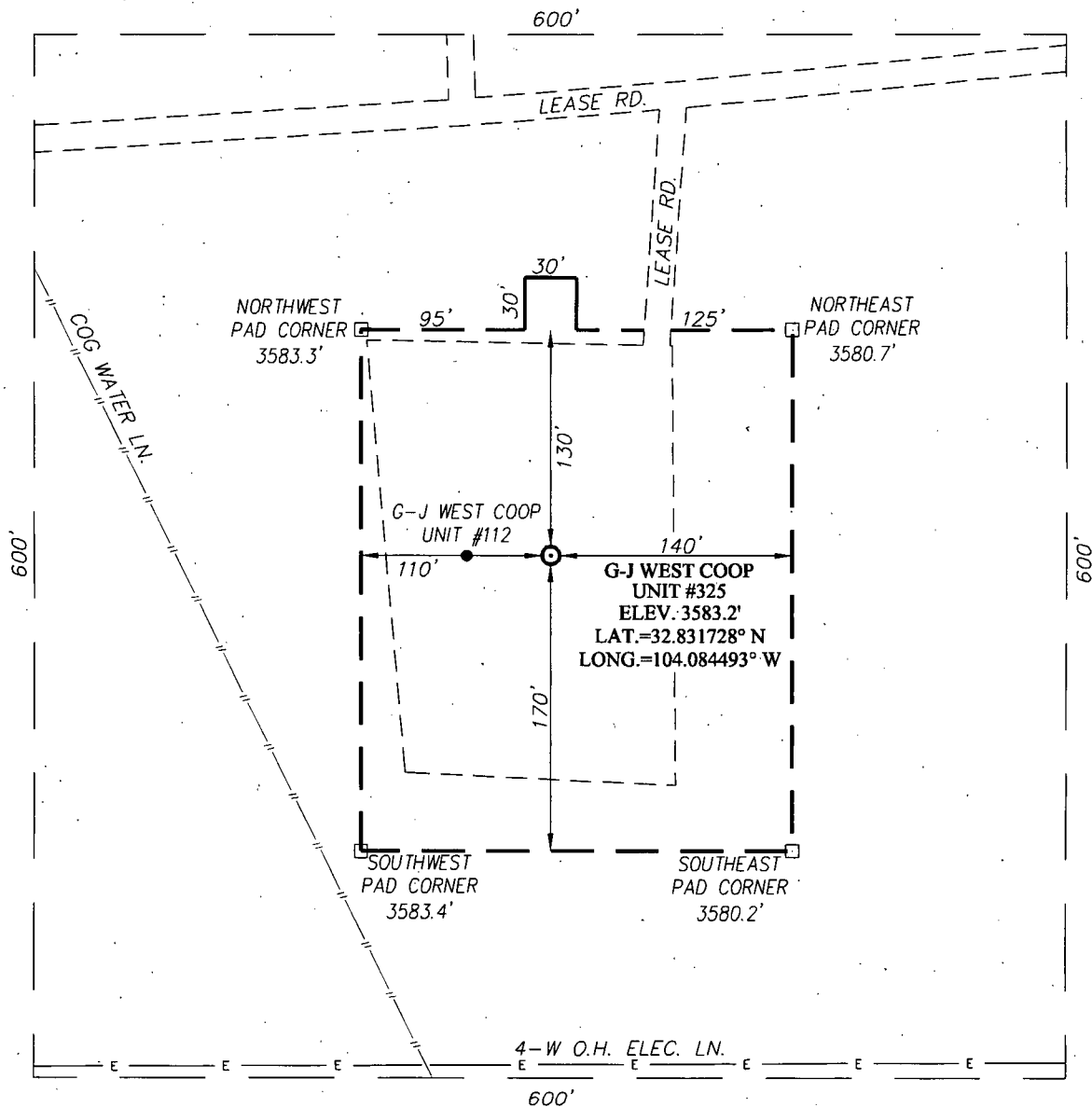
Bottom Hole Location If Different From Surface

UL or lot No.	Section	Township	Range	Lot Idn	Feet from the	North/South line	Feet from the	East/West line	County
Dedicated Acres 40	Joint or Infill	Consolidation Code	Order No.						

NO ALLOWABLE WILL BE ASSIGNED TO THIS COMPLETION UNTIL ALL INTERESTS HAVE BEEN CONSOLIDATED OR A NON-STANDARD UNIT HAS BEEN APPROVED BY THE DIVISION

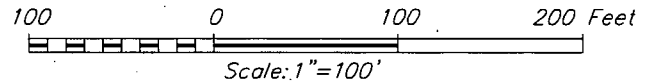
	<p>GEODETIC COORDINATES NAD 27 NME</p> <p>SURFACE LOCATION Y=666383.9 N X=576434.9 E LAT.=32.831728° N LONG.=104.084493° W</p>	<p><b>OPERATOR CERTIFICATION</b></p> <p>I hereby certify that the information herein is true and complete to the best of my knowledge and belief, and that this organization either owns a working interest or unleased mineral interest in the land including the proposed bottom hole location or has a right to drill this well at this location pursuant to a contract with an owner of such mineral or working interest, or to a voluntary pooling agreement or a compulsory pooling order heretofore entered by the division.</p> <p> 5-8-12 Signature Date</p> <p>Kelly J. Holly Printed Name</p> <p>kholly@concho.com E-mail Address</p>
	<p><b>SURVEYOR CERTIFICATION</b></p> <p>I hereby certify that the well location shown on this plat was plotted from field notes of actual surveys made by me or under my supervision, and that the same is true and correct to the best of my belief.</p> <p>MARCH 28, 2012</p> <p>Date of Survey</p> <p>Signature &amp; Seal of Professional Surveyor:</p> <p> 03/01/2012</p> <p>Certificate Number Gary O. Eidson 12641 Ronald J. Eidson 3239</p> <p>ACR JWSC W.O.: 12.11.0643</p>	

**SECTION 16, TOWNSHIP 17 SOUTH, RANGE 29 EAST, N.M.P.M.**  
**EDDY COUNTY** **NEW MEXICO**



**DIRECTIONS TO LOCATION**

FROM THE INTERSECTION OF U.S. HWY. #82 (LOVINGTON HWY.) AND CO. RD. #212 (VALLEY GAS), GO NORTH APPROX. 342 FEET ON LEASE ROAD. TURN LEFT AND GO WEST APPROX. 299 FEET. TURN LEFT AND GO WEST APPROX. 925 FEET. TURN LEFT AND GO SOUTH APPROX. 143 FEET TO WELL PAD.



**COG OPERATING, LLC**

**G-J WEST COOP UNIT #325 WELL**  
**LOCATED 1650 FEET FROM THE SOUTH LINE**  
**AND 1040 FEET FROM THE WEST LINE OF SECTION 16,**  
**TOWNSHIP 17 SOUTH, RANGE 29 EAST, N.M.P.M.,**  
**EDDY COUNTY, NEW MEXICO**

PROVIDING SURVEYING SERVICES  
 SINCE 1946  
**JOHN WEST SURVEYING COMPANY**  
 412 N. DAL PASO  
 HOBBS, N.M. 88240  
 (575) 393-3117 www.jwsc.biz

Survey Date: 3/28/12	CAD Date: 4/27/12	Drawn By: ACR
W.O. No.: 12110643	Rev:	Rel. W.O.:
		Sheet 1 of 1

## Producing wells in Section 16, T17S, R29E, Eddy County

API#	Operator	Lease	Well#	County	Legal	Total Depth	Well Type	Well Status	First Prod.	Last Prod.	Avg. (BO/D)
30-015-27108	MACK ENERGY CORP	MUSKEGON 16 STATE COM	001	EDDY	S:16, T:17S, R:29E	10,905	D	Salt Water Disposal	Mar 1993	Jun 1996	0.00
30-015-20129	MACK ENERGY CORP	G J WEST COOP UNIT	59	EDDY	S:16, T:17S, R:29E	2,600	PO	Pumping	Jan 1971	Jun 2005	0.63
30-015-10831	COG OPERATING LLC	G J WEST COOP UNIT	051	EDDY	S:16, T:17S, R:29E	0	O	Pumping	Jan 2005	Feb 2012	0.86
30-015-02996	COG OPERATING LLC	G J WEST COOP UNIT	052	EDDY	S:16, T:17S, R:29E	0	O	Pumping	Jan 1970	Apr 2007	0.87
30-015-10819	COG OPERATING LLC	G J WEST COOP UNIT	055	EDDY	S:16, T:17S, R:29E	2,770	O	Pumping	Jan 1969	Apr 2007	0.87
30-015-10831	COG OPERATING LLC	G J WEST COOP UNIT	051	EDDY	S:16, T:17S, R:29E	0	O	Pumping	Jan 1970	Apr 2007	0.87
30-015-02996	COG OPERATING LLC	G J WEST COOP UNIT	052	EDDY	S:16, T:17S, R:29E	0	O	Pumping	Jan 2005	Feb 2012	1.00
30-015-10819	COG OPERATING LLC	G J WEST COOP UNIT	055	EDDY	S:16, T:17S, R:29E	2,770	O	Pumping	Jan 2005	Feb 2012	1.00
30-015-20110	MACK ENERGY CORP	G J WEST COOP UNIT	057	EDDY	S:16, T:17S, R:29E	3,100	O	Pumping	Jan 1969	Oct 2000	1.10
30-015-20130	MACK ENERGY CORP	G J WEST COOP UNIT	061	EDDY	S:16, T:17S, R:29E	2,700	O	Flowing	Jan 1971	Jul 1991	1.48
30-015-36052	COG OPERATING LLC	G J WEST COOP UNIT	181	EDDY	S:16, T:17S, R:29E	5,454	O	Active Permit	Apr 2008	Feb 2012	1.83
30-015-35984	COG OPERATING LLC	G J WEST COOP UNIT	177	EDDY	S:16, T:17S, R:29E	5,456	O	Active Permit	Feb 2008	Feb 2012	2.76
30-015-20129	MACK ENERGY CORP	G J WEST COOP UNIT	59	EDDY	S:16, T:17S, R:29E	2,600	PO	Pumping	Jan 1969	Dec 1977	2.90
30-015-36704	COG OPERATING LLC	G J WEST COOP UNIT	206	EDDY	S:16, T:17S, R:29E	5,460	O	Active Permit	Jan 2009	Feb 2012	3.48
30-015-35576	COG OPERATING LLC	G J WEST COOP UNIT	154	EDDY	S:16, T:17S, R:29E	5,600	O	Active	Jul 2007	Feb 2012	3.52
30-015-02996	MACK ENERGY CORP	G J WEST COOP UNIT	052	EDDY	S:16, T:17S, R:29E	0	O	Pumping	Jan 1967	Aug 1971	3.77
30-015-20110	MACK ENERGY CORP	G J WEST COOP UNIT	057	EDDY	S:16, T:17S, R:29E	3,100	O	Pumping	Jan 1972	Dec 1977	4.39
30-015-20130	MACK ENERGY CORP	G J WEST COOP UNIT	061	EDDY	S:16, T:17S, R:29E	2,700	O	Flowing	Jan 1969	Apr 1971	4.43
30-015-37230	COG OPERATING LLC	G J WEST COOP UNIT	232	EDDY	S:16, T:17S, R:29E	5,520	O	Active Permit	Nov 2009	Feb 2012	5.03
30-015-37287	COG OPERATING LLC	G J WEST COOP UNIT	201	EDDY	S:16, T:17S, R:29E	5,504	O	Active Permit	Dec 2009	Feb 2012	5.17
30-015-35718	COG OPERATING LLC	G J WEST COOP UNIT	166	EDDY	S:16, T:17S, R:29E	5,459	O	Active Permit	Sep 2007	Feb 2012	5.31
30-015-37567	COG OPERATING LLC	G J WEST COOP UNIT	231	EDDY	S:16, T:17S, R:29E	5,565	O	Active Permit	Jul 2010	Jan 2012	5.45
	COG OPERATING				S:16, T:17S,						

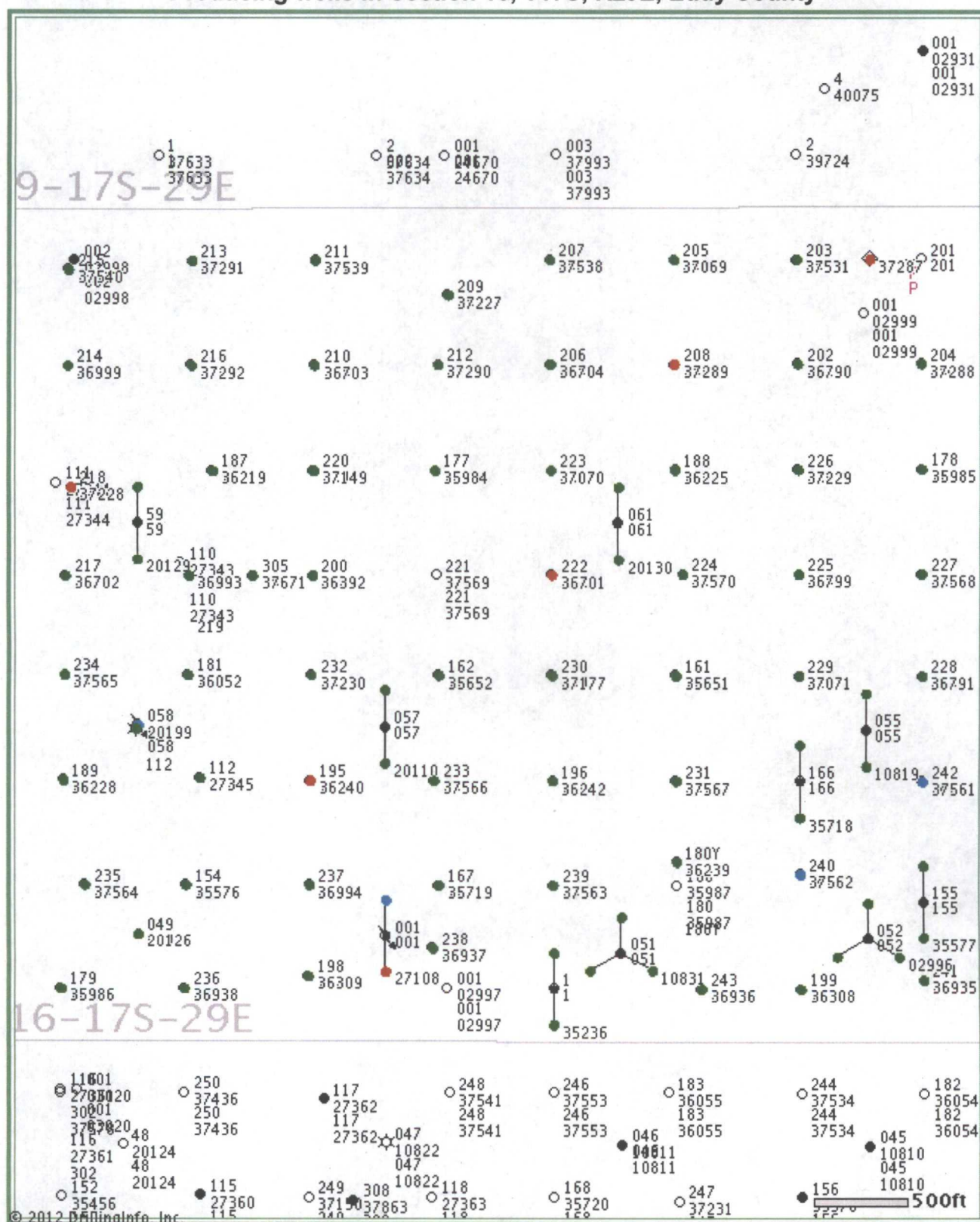
30-015-35236	LLC	G J WEST COOP UNIT	1	EDDY	R:29E	5,515	O	Active Permit	Mar 2007	Jan 2012	5.81
30-015-10831	MACK ENERGY CORP	G J WEST COOP UNIT	051	EDDY	S:16, T:17S, R:29E	0	O	Pumping	Jan 1967	Dec 1977	5.84
30-015-37291	COG OPERATING LLC	G J WEST COOP UNIT	213	EDDY	S:16, T:17S, R:29E	5,505	O	Active Permit	Dec 2009	Feb 2012	6.52
30-015-37149	COG OPERATING LLC	G J WEST COOP UNIT	220	EDDY	S:16, T:17S, R:29E	5,505	O	Active Permit	Sep 2009	Feb 2012	6.62
30-015-35652	COG OPERATING LLC	G J WEST COOP UNIT	162	EDDY	S:16, T:17S, R:29E	5,470	O	Active	Oct 2007	Feb 2012	6.72
30-015-37069	COG OPERATING LLC	G J WEST COOP UNIT	205	EDDY	S:16, T:17S, R:29E	5,503	O	Active Permit	Aug 2009	Feb 2012	6.90
30-015-36994	COG OPERATING LLC	G J WEST COOP UNIT	237	EDDY	S:16, T:17S, R:29E	5,500	O	Active Permit	Jun 2009	Feb 2012	6.97
30-015-37565	COG OPERATING LLC	G J WEST COOP UNIT	234	EDDY	S:16, T:17S, R:29E	5,588	O	Active Permit	Aug 2010	Feb 2012	7.31
30-015-36392	COG OPERATING LLC	G J WEST COOP UNIT	200	EDDY	S:16, T:17S, R:29E	5,462	O	Active Permit	Nov 2008	Feb 2012	8.86
30-015-35577	COG OPERATING LLC	G J WEST COOP UNIT	155	EDDY	S:16, T:17S, R:29E	5,737	O	Active	Aug 2007	Feb 2012	9.00
30-015-36228	COG OPERATING LLC	G J WEST COOP UNIT	189	EDDY	S:16, T:17S, R:29E	5,446	O	Active Permit	Jul 2008	Feb 2012	9.00
30-015-36240	COG OPERATING LLC	G J WEST COOP UNIT	195	EDDY	S:16, T:17S, R:29E		PO	Active Permit	Sep 2008	Feb 2012	9.21
30-015-20126	MACK ENERGY CORP	G J WEST COOP UNIT	049	EDDY	S:16, T:17S, R:29E	2,900	O	Pumping	Jan 1969	Aug 1996	9.26
30-015-36799	COG OPERATING LLC	G J WEST COOP UNIT	225	EDDY	S:16, T:17S, R:29E	5,580	O	Active Permit	Mar 2009	Feb 2012	9.28
30-015-37671	COG OPERATING LLC	G J WEST COOP UNIT	305	EDDY	S:16, T:17S, R:29E	5,576	O	Active Permit	May 2010	Feb 2012	9.31
30-015-36701	COG OPERATING LLC	G J WEST COOP UNIT	222	EDDY	S:16, T:17S, R:29E	5,454	O	Active Permit	Jan 2009	Feb 2012	9.41
30-015-36935	COG OPERATING LLC	G J WEST COOP UNIT	241	EDDY	S:16, T:17S, R:29E	5,504	O	Active Permit	May 2009	Feb 2012	9.45
30-015-37568	COG OPERATING LLC	G J WEST COOP UNIT	227	EDDY	S:16, T:17S, R:29E	5,576	O	Active Permit	Jul 2010	Feb 2012	9.66
30-015-37227	COG OPERATING LLC	G J WEST COOP UNIT	209	EDDY	S:16, T:17S, R:29E	5,500	O	Active Permit	Oct 2009	Feb 2012	9.72
30-015-37228	COG OPERATING LLC	G J WEST COOP UNIT	218	EDDY	S:16, T:17S, R:29E	5,516	O	Active Permit	Nov 2009	Feb 2012	9.83
30-015-27345	MACK ENERGY CORP	G J WEST COOP UNIT	112	EDDY	S:16, T:17S, R:29E	4,350	O	Pumping	Jun 1993	Nov 2000	10.63
30-015-37563	COG OPERATING LLC	G J WEST COOP UNIT	239	EDDY	S:16, T:17S, R:29E	5,558	O	Active Permit	Sep 2010	Feb 2012	10.66
30-015-37290	COG OPERATING LLC	G J WEST COOP UNIT	212	EDDY	S:16, T:17S, R:29E	5,495	O	Active Permit	Jan 2010	Feb 2012	11.00
30-015-37288	COG OPERATING LLC	G J WEST COOP UNIT	204	EDDY	S:16, T:17S, R:29E	5,510	O	Active Permit	Dec 2009	Feb 2012	11.17
30-015-37070	COG OPERATING LLC	G J WEST COOP UNIT	223	EDDY	S:16, T:17S, R:29E	5,550	PO	Active Permit	Aug 2009	Feb 2012	11.48

30-015-36225	COG OPERATING LLC	G J WEST COOP UNIT	188	EDDY	S:16, T:17S, R:29E	5,469	O	Active Permit	Sep 2008	Jan 2012	11.55
30-015-36936	COG OPERATING LLC	G J WEST COOP UNIT	243	EDDY	S:16, T:17S, R:29E	5,500	O	Active Permit	May 2009	Feb 2012	11.59
30-015-37538	COG OPERATING LLC	G J WEST COOP UNIT	207	EDDY	S:16, T:17S, R:29E	5,572	O	Active Permit	Jun 2010	Feb 2012	11.86
30-015-37229	COG OPERATING LLC	G J WEST COOP UNIT	226	EDDY	S:16, T:17S, R:29E	5,472	O	Active Permit	Oct 2009	Feb 2012	12.31
30-015-36219	COG OPERATING LLC	G J WEST COOP UNIT	187	EDDY	S:16, T:17S, R:29E	5,456	O	Active Permit	Jul 2008	Feb 2012	12.76
30-015-35985	COG OPERATING LLC	G J WEST COOP UNIT	178	EDDY	S:16, T:17S, R:29E	5,482	O	Active Permit	Mar 2008	Jan 2012	12.81
30-015-37539	COG OPERATING LLC	G J WEST COOP UNIT	211	EDDY	S:16, T:17S, R:29E	5,585	O	Active Permit	Jul 2010	Feb 2012	12.83
30-015-36239	COG OPERATING LLC	G J WEST COOP UNIT	180Y	EDDY	S:16, T:17S, R:29E	5,450	O	Active Permit	May 2008	Feb 2012	12.86
30-015-37071	COG OPERATING LLC	G J WEST COOP UNIT	229	EDDY	S:16, T:17S, R:29E	5,505	U	Active Permit	Jul 2009	Feb 2012	12.86
30-015-36242	COG OPERATING LLC	G J WEST COOP UNIT	196	EDDY	S:16, T:17S, R:29E		PO	Active Permit	Sep 2008	Feb 2012	13.41
30-015-36703	COG OPERATING LLC	G J WEST COOP UNIT	210	EDDY	S:16, T:17S, R:29E	5,451	O	Active Permit	Jan 2009	Feb 2012	13.41
30-015-37289	COG OPERATING LLC	G J WEST COOP UNIT	208	EDDY	S:16, T:17S, R:29E	5,510	O	Active Permit	Jan 2010	Feb 2012	13.76
30-015-36937	COG OPERATING LLC	G J WEST COOP UNIT	238	EDDY	S:16, T:17S, R:29E	5,505	O	Active Permit	May 2009	Feb 2012	14.10
30-015-37540	COG OPERATING LLC	G J WEST COOP UNIT	215	EDDY	S:16, T:17S, R:29E	5,585	O	Active Permit	Jun 2010	Feb 2012	14.45
30-015-35651	COG OPERATING LLC	G J WEST COOP UNIT	161	EDDY	S:16, T:17S, R:29E	5,640	O	Active	Sep 2007	Feb 2012	14.52
30-015-35719	COG OPERATING LLC	G J WEST COOP UNIT	167	EDDY	S:16, T:17S, R:29E	5,506	O	Active Permit	Oct 2007	Jan 2012	15.03
30-015-36999	COG OPERATING LLC	G J WEST COOP UNIT	214	EDDY	S:16, T:17S, R:29E	5,543	O	Active Permit	May 2009	Jan 2012	15.06
30-015-37564	COG OPERATING LLC	G J WEST COOP UNIT	235	EDDY	S:16, T:17S, R:29E	5,522	O	Active Permit	Aug 2010	Feb 2012	15.21
30-015-37292	COG OPERATING LLC	G J WEST COOP UNIT	216	EDDY	S:16, T:17S, R:29E	5,494	O	Active Permit	Jan 2010	Feb 2012	15.62
30-015-36309	COG OPERATING LLC	G J WEST COOP UNIT	198	EDDY	S:16, T:17S, R:29E	5,476	O	Active Permit	Oct 2008	Feb 2012	15.72
30-015-35986	COG OPERATING LLC	G J WEST COOP UNIT	179	EDDY	S:16, T:17S, R:29E	5,494	O	Active Permit	Mar 2008	Feb 2012	16.03
30-015-36702	COG OPERATING LLC	G J WEST COOP UNIT	217	EDDY	S:16, T:17S, R:29E	5,464	O	Active Permit	Dec 2008	Jan 2012	16.06
30-015-36790	COG OPERATING LLC	G J WEST COOP UNIT	202	EDDY	S:16, T:17S, R:29E	5,500	O	Active Permit	Apr 2009	Feb 2012	16.52
30-015-37566	COG OPERATING LLC	G J WEST COOP UNIT	233	EDDY	S:16, T:17S, R:29E	5,567	O	Active Permit	Aug 2010	Jan 2012	16.87
30-015-37177	COG OPERATING LLC	G J WEST COOP UNIT	230	EDDY	S:16, T:17S, R:29E	5,506	O	Active Permit	Sep 2009	Feb 2012	18.07

30-015-37570	COG OPERATING LLC	G J WEST COOP UNIT	224	EDDY	S:16, T:17S, R:29E	5,550	PO	Active Permit	Jul 2010	Feb 2012	18.83
30-015-35577	COG OPERATING LLC	G J WEST COOP UNIT	155	EDDY	S:16, T:17S, R:29E	5,737	O	Active	Aug 2007	Sep 2007	19.53
30-015-36308	COG OPERATING LLC	G J WEST COOP UNIT	199	EDDY	S:16, T:17S, R:29E	5,475	O	Active Permit	Nov 2008	Feb 2012	19.93
30-015-37531	COG OPERATING LLC	G J WEST COOP UNIT	203	EDDY	S:16, T:17S, R:29E	5,575	O	Active Permit	Jun 2010	Feb 2012	20.24
30-015-37562	COG OPERATING LLC	G J WEST COOP UNIT	240	EDDY	S:16, T:17S, R:29E	5,545	O	Active Permit	Sep 2010	Feb 2012	20.55
30-015-36791	COG OPERATING LLC	G J WEST COOP UNIT	228	EDDY	S:16, T:17S, R:29E	5,492	O	Active Permit	Apr 2009	Feb 2012	21.07
30-015-36993	COG OPERATING LLC	G J WEST COOP UNIT	219	EDDY	S:16, T:17S, R:29E	5,501	O	Active Permit	Jun 2009	Feb 2012	21.24
30-015-37561	COG OPERATING LLC	G J WEST COOP UNIT	242	EDDY	S:16, T:17S, R:29E	5,532	O	Active Permit	Oct 2010	Jan 2012	22.68
30-015-36938	COG OPERATING LLC	G J WEST COOP UNIT	236	EDDY	S:16, T:17S, R:29E	5,500	O	Active Permit	May 2009	Jan 2012	29.03
30-015-00000		G J WEST COOP UT	112	EDDY	S:16, T:17S, R:29E		G	Active	Aug 1993	Aug 1993	38.61
30-015-35236	COG OPERATING LLC	STAGECOACH STATE	1	EDDY	S:16, T:17S, R:29E	5,515	O	Active Permit	Jan 2007	Feb 2007	46.64
30-015-35718	COG OPERATING LLC	G J WEST COOP UNIT	166	EDDY	S:16, T:17S, R:29E	5,459	O	Active Permit	Sep 2007	Oct 2007	58.06
30-015-27108	COG OPERATING LLC	MUSKEGON 16 STATE COM	001	EDDY	S:16, T:17S, R:29E	10,905	D	Salt Water Disposal	Jan 2001	Feb 2012	
30-015-20199	COG OPERATING LLC	G J WEST COOP UNIT	058	EDDY	S:16, T:17S, R:29E	2,600	I	Unknown	Jan 2005	Dec 2011	

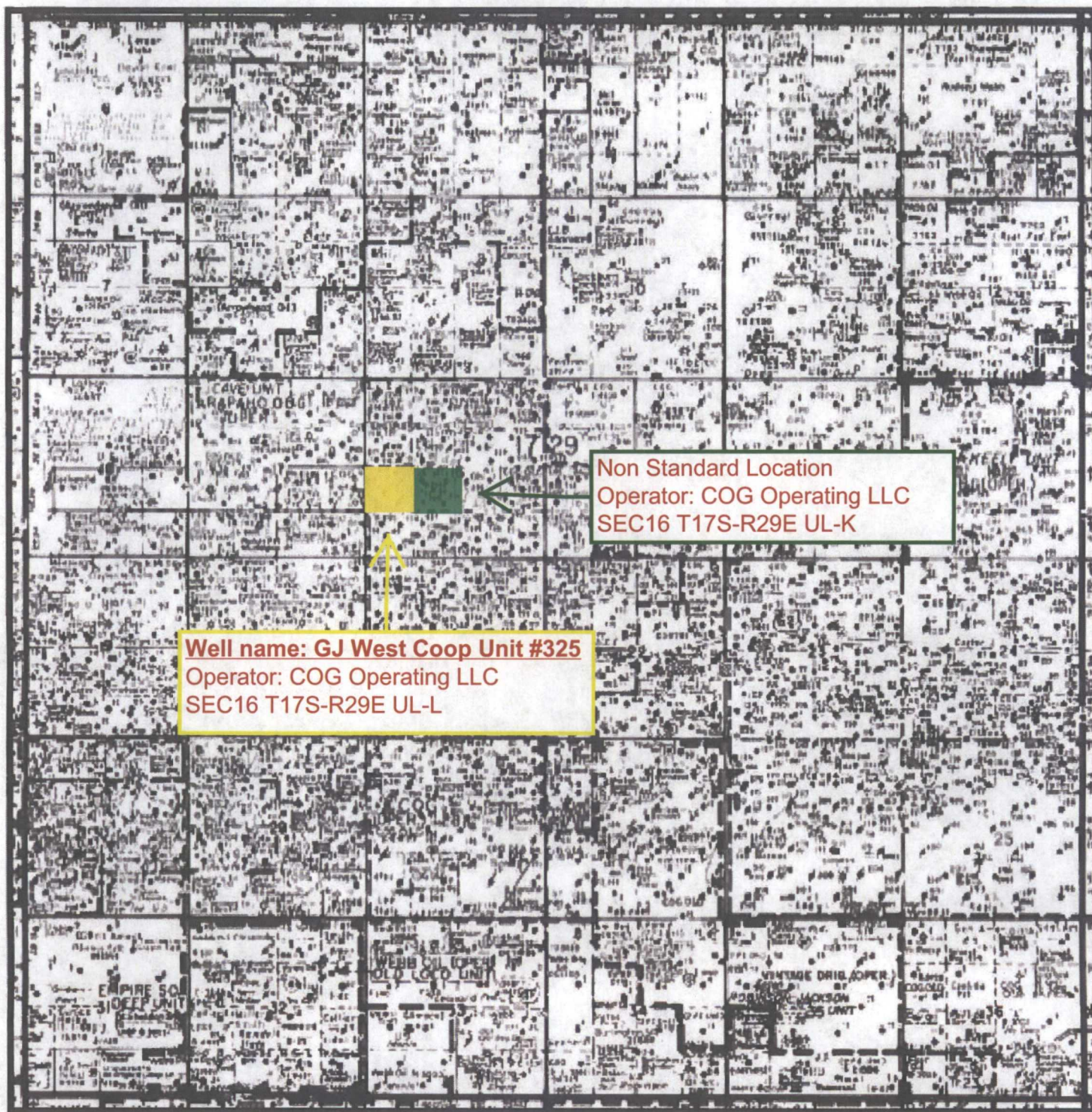


### Producing wells in Section 16, T17S, R29E, Eddy County



© 2012 Drilling Info, Inc. All rights reserved. All data and information is provided "As Is" and subject to the DI subscription agreement.





**Brooks, David K., EMNRD**

---

**From:** Brooks, David K., EMNRD  
**Sent:** Wednesday, May 30, 2012 10:05 AM  
**To:** kholly@concho.com  
**Subject:** GJ West Coop Unit #325; NSL Application

Dear Ms. Holly

Your application identified the acreage you are encroaching toward as "Unit K of Section 16. It appears, however, that your proposed location also encroaches diagonally toward Unit N.

Please advise concerning the ownership of Unit N.

Sincerely

David K. Brooks

## Brooks, David K., EMNRD

---

**From:** Kelly Holly <kholly@concho.com>  
**Sent:** Wednesday, May 30, 2012 10:08 AM  
**To:** Brooks, David K., EMNRD  
**Subject:** RE: GJ West Coop Unit #325; NSL Application

Unit N is also COG Operating LLC.

**Kelly Holly | Permitting Tech-NM | Concho Resources**

550 W Texas Avenue, Suite 100 | Midland, TX 79701 | p: 432.685.4384 | [kholly@concho.com](mailto:kholly@concho.com)



**CONFIDENTIALITY NOTICE:** The information in this email may be confidential and/or privileged. If you are not the intended recipient or an authorized representative of the intended recipient, you are hereby notified that any review, dissemination or copying of this email and its attachments, if any, or the information contained herein, is prohibited. If you have received this email in error, please immediately notify the sender by return email and delete this email from your system. Thank you

---

**From:** Brooks, David K., EMNRD [<mailto:david.brooks@state.nm.us>]  
**Sent:** Wednesday, May 30, 2012 11:05 AM  
**To:** Kelly Holly  
**Subject:** GJ West Coop Unit #325; NSL Application

Dear Ms. Holly

Your application identified the acreage you are encroaching toward as "Unit K of Section 16. It appears, however, that your proposed location also encroaches diagonally toward Unit N.

Please advise concerning the ownership of Unit N.

Sincerely

David K. Brooks

**CONFIDENTIALITY NOTICE:** The information in this email may be confidential and/or privileged. If you are not the intended recipient or an authorized representative of the intended recipient, you are hereby notified that any review, dissemination or copying of this email and its attachments, if any, or the information contained herein, is prohibited. If you have received this email in error, please immediately notify the sender by return email and delete this email from your system. Thank you.